

**MISSION DATA CARD**

| OPORD          | Callsign             | Mission       | Date/Time      |     |      |       |
|----------------|----------------------|---------------|----------------|-----|------|-------|
| 2841/2024      | Outlaw 5             | Training      | 292000APR24    |     |      |       |
| Task           | Bop-Up Attack        |               |                |     |      | Freq  |
| AO             | Akamas Bombing Range |               |                |     |      | 133.5 |
| Departure      |                      |               | Recovery       |     |      |       |
| Helicopter VFR |                      |               | Helicopter VFR |     |      |       |
| #              | Callsign             | Pilot         | IFF            | TCN | LSR  | NET   |
| -1             | Outlaw 5-1           | Laud/Warblade | 5751           | 1Y  | 1711 |       |
| -2             | Outlaw 5-2           | Hudson/Mütze  | 5752           | 64Y | 1712 |       |

**LOADOUT**

|     |                      |      |           |
|-----|----------------------|------|-----------|
| A/A |                      | GUN  | 100% HEDP |
| A/G | 8xAGM114L, 8xAGM114K | CHF  | 30        |
| POD |                      | FLR  | 60        |
| TKS |                      | FUEL | 100%      |

**TOLD**

|      |         |        |       |       |      |
|------|---------|--------|-------|-------|------|
|      | Takeoff | Target | Joker | Bingo | Land |
| FUEL | 2513    |        |       |       |      |

**AIRBASES**

|     | Name                | TCN  | ATIS  | GND   | TWR    | RWY | Elev | ILS   |
|-----|---------------------|------|-------|-------|--------|-----|------|-------|
| Dep | Akrotiri AFB        | 107X | 288.2 | 240.1 | 339.85 | 28  | 62   | 109.7 |
| Arr | Akrotiri AFB        | 107X | 288.2 | 240.1 | 339.85 | 28  | 62   | 109.7 |
| Div | Paphos Internationl | 79X  | 127.3 |       | 353.8  | 29  | 40   | 108.9 |

**FLIGHTPLAN**

| # | Name   | Navaid/Coords/DME    | ALT | TOT |
|---|--------|----------------------|-----|-----|
| 1 | PAPA   | N34 39.39 E032 46.48 |     |     |
| 2 | AKB.T5 | N35 05.04 E032 17.63 |     |     |

**COMMS**

| Radio | Usage  |
|-------|--------|
| 1     | 133.5  |
| 2     | 329.85 |
| 3     | 35.35  |
| 4     | 35.45  |

## OTHER FLIGHTS

| Callsign    | Mission            | Airframe     | Freq                        | TCN  | Grpld | Laser |
|-------------|--------------------|--------------|-----------------------------|------|-------|-------|
| Tiger 1     | Training           | 2x F/A-18C   | 261.15                      | 1/64 | 1     | 155X  |
| AO          |                    | Task         | DEAD Training SA2/SAx Range |      |       |       |
| Python* 1   | Training           | 1x AV-8B N/A | 264.55                      | 1/64 |       | 168X  |
| AO          |                    | Task         |                             |      |       |       |
| Tiger 2     | Training           | 2x F/A-18C   | 261.25                      | 1/64 | 2     | 156X  |
| AO          |                    | Task         | DEAD Training SA2/SAx Range |      |       |       |
| Nazgul 6    | Training           | 4x F-15E     | 262.45                      | 1/64 |       | 156X  |
| AO          |                    | Task         |                             |      |       |       |
| Edelweiss 1 | Training           | 1x F/A-18C   | 264.15                      | 1/64 |       | 171X  |
| AO          |                    | Task         |                             |      |       |       |
| Monster 1   | Training           | 2x A-10C     | 132.15                      | 1/64 | 21    | 161X  |
| AO          | Mission Area North | Task         |                             |      |       |       |
| T-Rex 2     | Training           | 2x A-10C     | 132.25                      | 1/64 | 25    | 165X  |
| AO          | Mission Area North | Task         | Coin Mission                |      |       |       |
| Beast 1     | Training           | 2x A-10C     | 264.05                      | 1/64 | 25    | 170X  |
| AO          |                    | Task         |                             |      |       |       |

**RADIO CHANNELS**

| #  | Freq    | Name                        |
|----|---------|-----------------------------|
| 1  |         | Flight/Squadron specific    |
| 2  | 288.2   | Akrotiri ATIS               |
| 3  | 240.1   | Akrotiri Ground             |
| 4  | 339.85  | Aktrotiri Tower             |
| 5  | 335.05  | Akrotiri Approach           |
| 6  | 360.1   | Incirlik Tower              |
| 7  | 371.35  | Incirlik Ground             |
| 8  | 377.475 | Incirlik ATIS               |
| 9  |         | No Preset                   |
| 10 | 127.3   | Paphos ATIS                 |
| 11 | 353.8   | Paphos Tower                |
| 12 | 304.0   | CVN-73 George Washington    |
| 13 | 302.0   | LHA-1 Tarawa                |
| 14 | 259.0   | CV-59 Forrestal             |
| 15 |         | No Preset                   |
| 16 | 377.8   | Overlord                    |
| 17 | 265.0   | KC-135 Texaco-1 medium/slow |
| 18 | 319.8   | KC-135 Arco-1               |
| 19 | 360.8   | KC-135MPRS Arco-2           |
| 20 | 256.0   | S-3B Recovery Tanker        |

**RAMROD**

|   |   |   |   |   |   |   |   |   |   |
|---|---|---|---|---|---|---|---|---|---|
| 0 | 1 | 2 | 3 | 4 | 5 | 6 | 7 | 8 | 9 |
| L | A | C | H | R | Y | M | O | S | E |

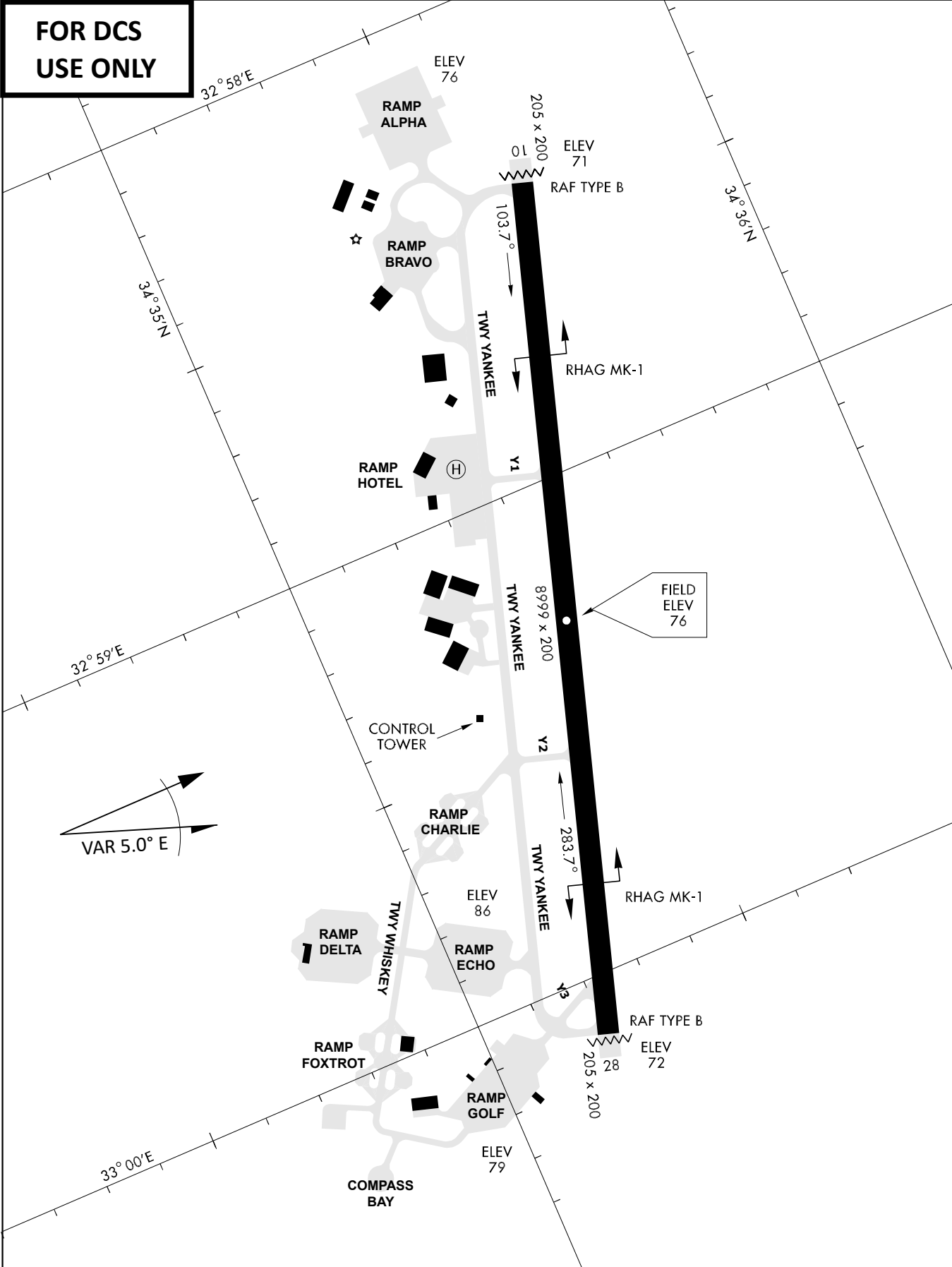
**KTC 1400 C**

|   | 0    | 1   | 2   | 3  | 4  | 5   | 6  | 7  | 8  | 9  |
|---|------|-----|-----|----|----|-----|----|----|----|----|
| A | EMLD | WUB | IOV | RJ | PN | CAQ | YS | GK | FT | HX |
| B | AXYV | QKF | MNU | GL | PW | OEH | JC | RT | BI | DS |
| C | WNAP | HCR | GYK | SO | UT | IFE | JM | BQ | VX | DL |
| D | HKRI | JXF | CDN | MB | LQ | WAO | TP | YU | GV | SE |
| E | CVXP | FEW | IDL | BN | TG | AKY | JS | MR | OU | QH |
| F | KYIB | LVQ | TRU | FX | JG | HOP | NA | MW | CS | DE |
| G | WVQE | NOM | TUP | GH | LC | IDA | XF | YB | RJ | SK |
| H | FQJC | HOM | USR | TD | BP | KIV | XA | EG | NW | YL |
| I | JVOF | DBR | HMS | XL | QI | TCW | EU | AY | PK | NG |
| J | CDXU | ETA | VSM | BO | HW | PYQ | RK | FL | IJ | GN |
| K | ILCJ | HBO | GAK | FW | NX | EDQ | YP | TS | UM | RV |
| L | MRPD | SUV | FOL | HQ | NA | CEI | JB | WT | YX | KG |
| M | WXQO | EYJ | IGC | AN | PB | HKS | UM | TL | FD | VR |
| N | EVPM | KHA | IDO | JN | LT | QBS | FY | WG | RC | UX |
| O | INLH | FEB | VWM | UQ | PT | KJX | RC | DO | YG | SA |
| P | YXOJ | UAE | LWC | QR | IV | PND | MG | KH | TB | FS |
| Q | XDHJ | TYG | NLP | CB | EK | QFS | RO | UV | MA | IW |
| R | YEAL | VBD | XUI | OR | PF | WKJ | GQ | CM | HT | SN |
| S | XRYN | VET | OLQ | MP | AU | HBG | KJ | CF | ID | SW |
| T | KCMP | ABF | JIG | WL | OT | UXV | HQ | ER | DN | SY |
| U | XMSF | TLU | ANB | IQ | PY | JRO | ED | GH | KV | WC |
| V | PNLH | ITE | CAX | YW | GU | FJQ | OD | RK | MB | SV |
| W | PJAR | MOY | WNK | XL | CH | FUV | SI | QD | GT | EB |
| X | TGSK | AXB | MWC | DN | VY | FRP | JO | IU | QL | HE |
| Y | QSLK | DEG | OVA | UC | BW | MHJ | FR | TX | PI | YN |

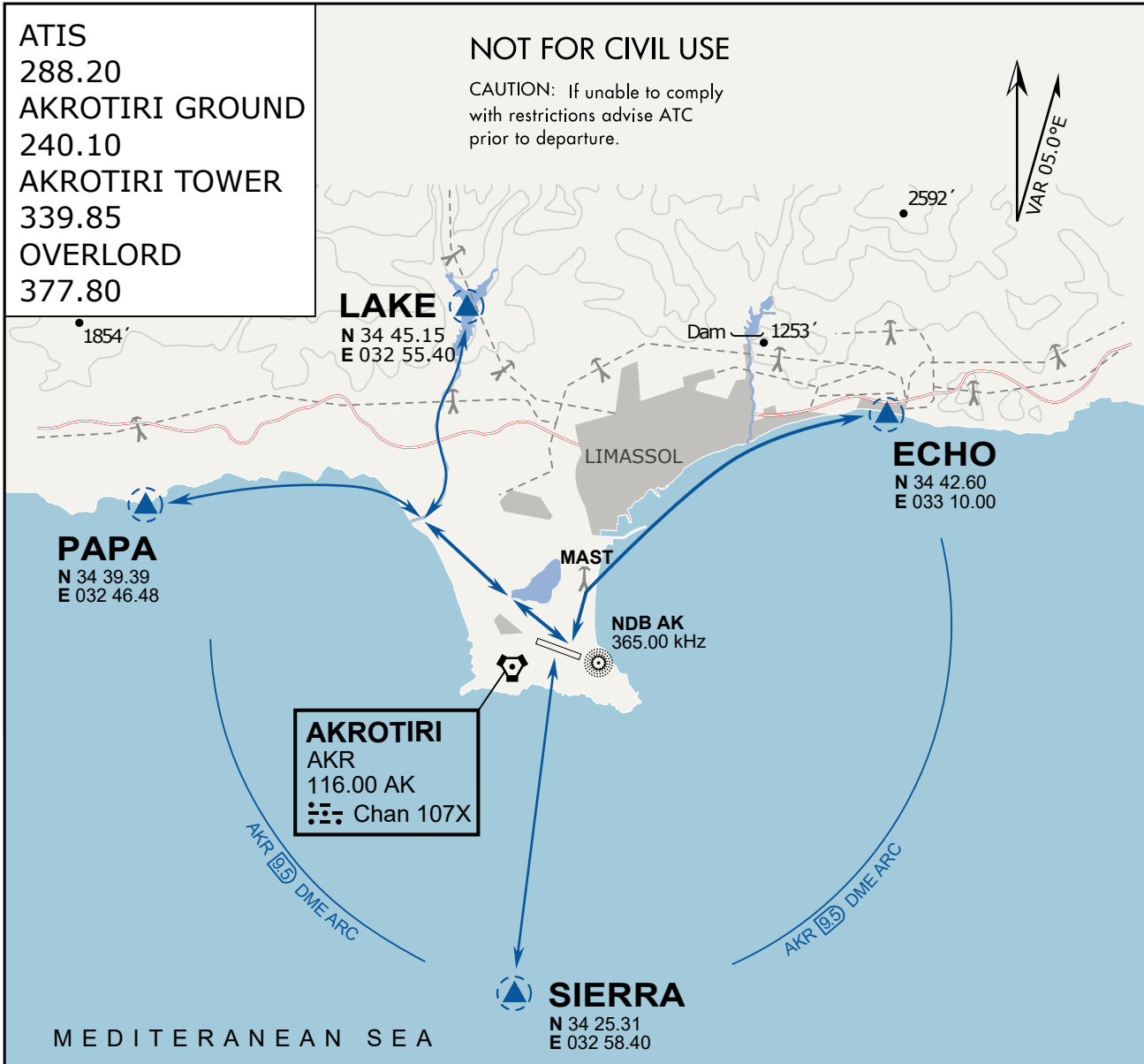
**NAVAIDS**

| <b>Id</b> | <b>Name</b>                             | <b>Channel</b> | <b>Position</b>        | <b>Elevation</b> |
|-----------|---|----------------|------------------------|------------------|
| DAN       | Incirlik                                | 21             | N37 00.950 E035 26.883 | 243              |
| AKR       | Akrotiri                                | 107            | N34 34.765 E032 57.769 | 147              |
| PHA       | Paphos                                  | 79             | N34 42.997 E032 28.963 | 35               |
| RMD       | Ramat David                             | 84             | N32 39.892 E035 11.265 | 136              |
| OS66      | Kuweires Military<br>Aviation Institute | 36             | N36 11.362 E037 34.226 | 1200             |

**FOR DCS  
 USE ONLY**



| ATIS       | AKROTIRI GND    | AKROTIRI TWR     | OVERLORD CONTROL | TACAN    | FIELD ELEVATION       |
|------------|-----------------|------------------|------------------|----------|-----------------------|
| 288.20 MHz | 240.10   122.10 | 339.85   130.075 | 377.8            | AKR 107X | <b>75 [ft] 23 [m]</b> |



### ARR / DEP ROUTE DESCRIPTION

#### GENERAL

Stay at or below 500' AGL.

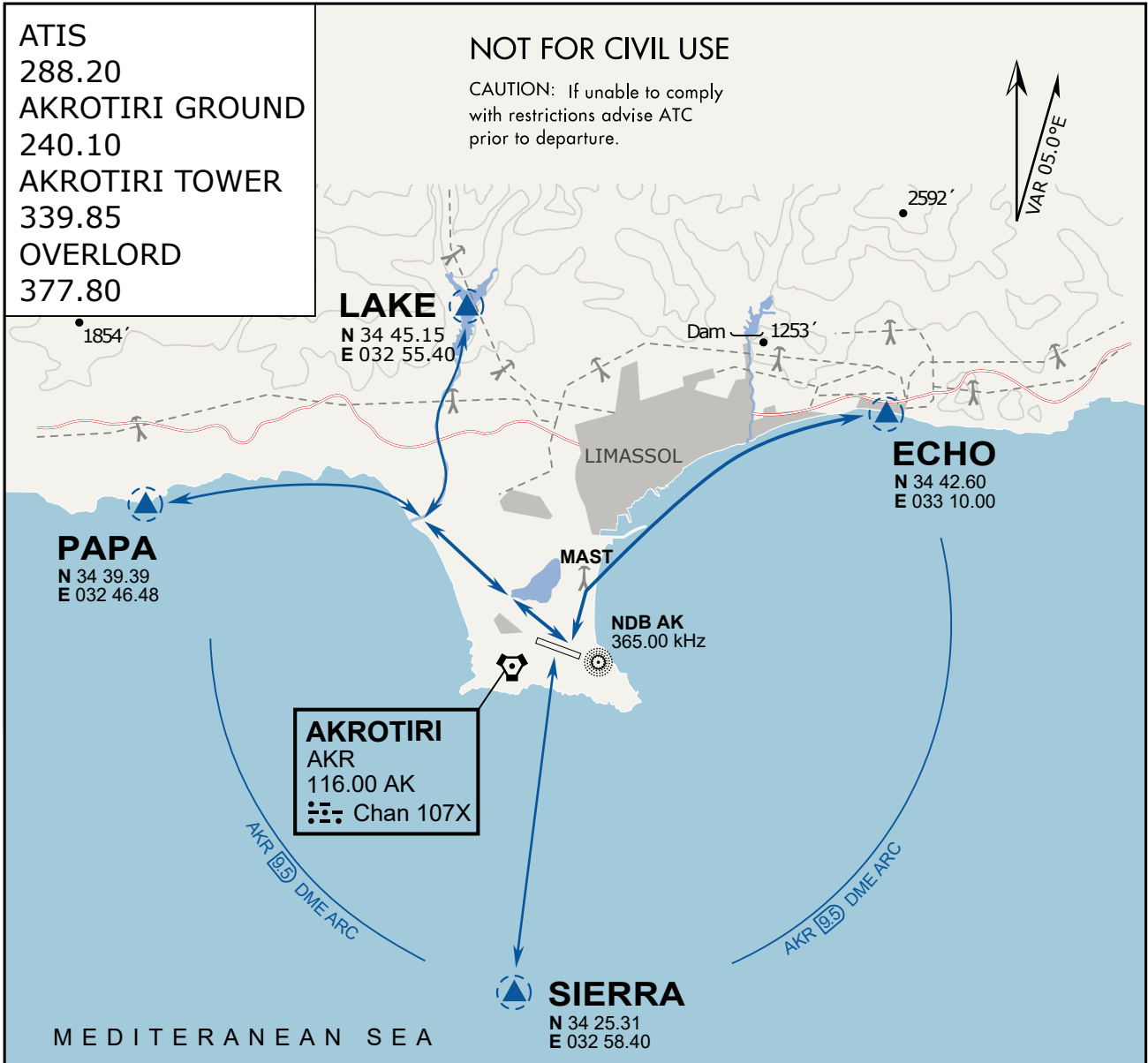
#### DEPARTURE

- ECHO: Via the 4 masts, along the coastline to EXIT.
- LAKE: Stay SOUTH WEST of the dry lake, to the river mouth, follow river to EXIT.
- PAPA: Stay SOUTH WEST of the dry lake, follow coastline to EXIT.
- SIERRA: Direct EXIT.

#### ARRIVAL

- LAKE: Follow river to coastline, then direct LCRA.
- PAPA: Follow coastline to rivermouth, then direct LCRA.
- ECHO: Follow coastline to the 4 masts, then to LCRA.
- SIERRA: Direct to LCRA.





### ARR / DEP ROUTE DESCRIPTION

#### GENERAL

Stay at or below 500' AGL.

#### DEPARTURE

- ECHO: Via the 4 masts, along the coastline to EXIT.
- LAKE: Stay SOUTH WEST of the dry lake, to the river mouth, follow river to EXIT.
- PAPA: Stay SOUTH WEST of the dry lake, follow coastline to EXIT.
- SIERRA: Direct EXIT.

#### ARRIVAL

- LAKE: Follow river to coastline, then direct LCRA.
- PAPA: Follow coastline to rivermouth, then direct LCRA.
- ECHO: Follow coastline to the 4 masts, then to LCRA.
- SIERRA: Direct to LCRA.

**NOT AVAILABLE**

**NOT AVAILABLE**