

MISSION DATA CARD

OPORD		Callsign		Mission		Date/Time		
2840/2024		Monster 1		Training		252000APR24		
Task	Night Attacks and AAR					Freq		
AO	Insurgent Town					132.15		
Departure				Recovery				
RWY28 SID				ILS 28				
#	Callsign		Pilot		IFF	TCN	LSR	NET
-1	Monster 1-1		Toolface		1411	1Y	1611	21/01
-2	Monster 1-2		Lenzi		1412	64Y	1612	21/02
-3	Monster 1-3		Stoner		1413	64X	1613	21/03

LOADOUT

A/A	A9M				GUN	100% CM	
A/G	7M282L, 2x8LU2, 2x7M257				CHF	240	
POD	A184, TGP				FLR	240	
TKS					FUEL	100%	

TOLD

	Takeoff	Target	Joker	Bingo	Land
FUEL	11087				

AIRBASES

	Name	TCN	ATIS	GND	TWR	RWY	Elev	ILS
Dep	Akrotiri AFB	107X	288.2	240.1	339.85	28	62	109.7
Arr	Akrotiri AFB	107X	288.2	240.1	339.85	28	62	109.7
Div	Paphos Internationl	79X	127.3		353.8	29	40	108.9

FLIGHTPLAN

#	Name	Navaid/Coords/DME	ALT	TOT
1	ANANE	N34 18.048 E032 43.619		
2	ITR.T1	N34 47.318 E032 58.622		
3	EMILI	N34 38.389 E034 02.586		
4	IREFA	N34 25.328 E033 26.664		

COMMS

Radio	Usage
1	132.15
2	2 - 4 - 16 - 2 - 4
3	32.00

SUPPORT**Tanker**

Callsign	TCN	Freq	ALT	TAS
SHELL 3	93Y	278.75	FL170	215
Pos	SHELL3: (N3436 E03419)			

OTHER FLIGHTS

Callsign	Mission	Airframe	Freq	TCN	Grpld	Laser
Python* 1	Training	1x AV-8B N/A	264.55	1/64		168X
AO		Task				
Tiger 1	Training	3x F/A-18C	261.15	1/64	1	155X
AO	Akamas Bombing Range	Task	AG Bomb and AAR Training Night			
Outlaw 5	Training	4x AH-64D	133.5	1/64		171X
AO	Akamas Bombing Range	Task	Bop-Up Attack			
Raptor 1	Training	4x F-16C	134.0	1/64		162X
AO		Task				
Nazgul 6	Training	4x F-15E	262.45	1/64		156X
AO	Sterile BVR	Task	BVR Training			
T-Rex 2	Training	4x A-10C	132.25	1/64	25	165X
AO	Insurgent Town	Task	Night Attacks and AAR			

RADIO CHANNELS

#	Freq	Name
1		Flight/Squadron specific
2	288.2	Akrotiri ATIS
3	240.1	Akrotiri Ground
4	339.85	Aktrotiri Tower
5	335.05	Akrotiri Approach
6	360.1	Incirlik Tower
7	371.35	Incirlik Ground
8	377.475	Incirlik ATIS
9		No Preset
10	127.3	Paphos ATIS
11	353.8	Paphos Tower
12	304.0	CVN-73 George Washington
13	302.0	LHA-1 Tarawa
14	259.0	CV-59 Forrestal
15		No Preset
16	377.8	Overlord
17	265.0	KC-135 Texaco-1 medium/slow
18	319.8	KC-135 Arco-1
19	360.8	KC-135MPRS Arco-2
20	256.0	S-3B Recovery Tanker

RAMROD

0	1	2	3	4	5	6	7	8	9
P	H	I	L	A	N	D	E	R	S

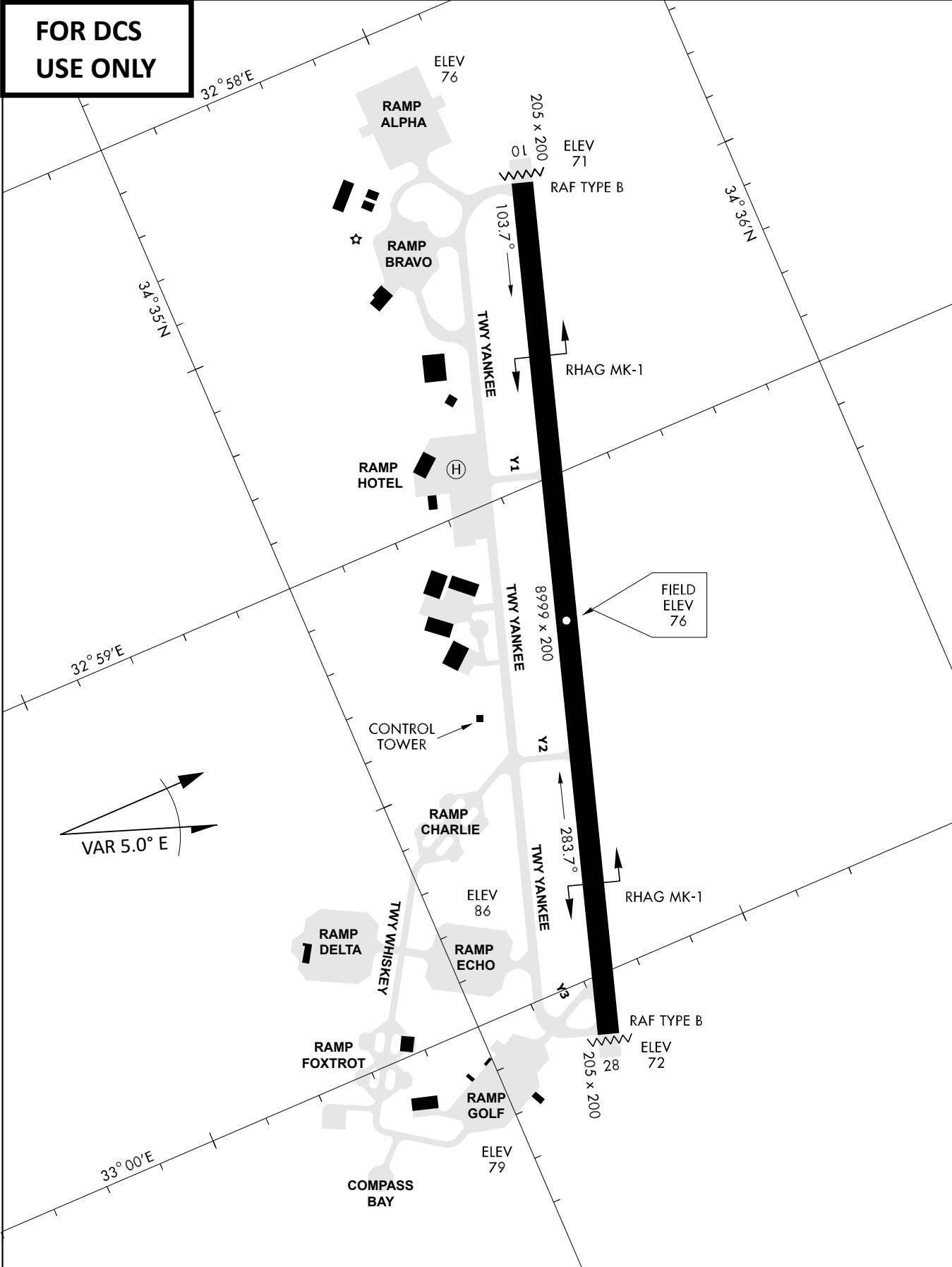
KTC 1400 C

	0	1	2	3	4	5	6	7	8	9
A	WIRT	MLG	AED	KF	VH	OQU	BN	YC	SJ	XP
B	JGER	NHO	MYW	XU	CS	VTL	BP	ID	KQ	AF
C	IQVB	WSF	JXN	CU	RP	KAL	YH	DE	MG	OT
D	BUQN	CYV	RIO	PW	AE	JTD	MG	FL	HK	XS
E	SDAI	TNL	CWO	FB	KH	QYG	JX	PM	ER	VU
F	AJNG	PHT	ICY	QS	MO	BLU	WD	RX	VE	KF
G	BGDJ	HAC	FRX	EW	QP	VOU	TS	ML	IY	NK
H	SFNU	BPT	CHY	JW	KV	XLM	DG	RO	QE	IA
I	VOFN	CRI	HDB	GY	JE	PMK	SU	TL	AW	XQ
J	ECIH	NRY	UJM	WG	DX	TLP	BV	AK	SQ	OF
K	RJVL	MXO	WIH	BE	NC	GSP	UT	KY	AD	QF
L	IERY	MDO	BLA	TQ	KG	WHC	XP	JU	SF	VN
M	VUHE	PRY	NBC	SK	DA	JXG	ML	FO	QT	IW
N	CMFS	BLN	HOD	RG	WV	PEU	KX	QA	TJ	YI
O	QTJX	DHE	NRK	AW	LB	OSU	YG	VM	FP	CI
P	GKQX	LHP	IYU	FR	VB	EJM	CD	OS	TW	NA
Q	RMHW	FSO	KJV	YG	EB	TUC	PX	QD	AL	IN
R	IXNO	RLE	DKC	JM	TQ	VHW	SP	AB	GY	FU
S	TWHE	NQB	RSL	KM	FC	GIU	XD	AY	VJ	PO
T	OLER	VPK	SHY	TW	AN	JFB	GX	UC	IQ	DM
U	APWR	FYM	SDQ	GB	VL	UEC	JO	NX	TH	IK
V	GHWP	MQX	OCY	DR	KE	LFB	AN	TJ	IU	SV
W	PFEY	QUR	WMC	AG	IS	JNK	BO	XT	DV	HL
X	IQBW	HDT	LCU	FA	ME	OJK	GP	XY	RS	VN
Y	UWQA	HSE	VPM	NI	OD	RXC	KJ	BY	TL	GF

NAVAIDS

Id	Name	Channel	Position	Elevation
DAN	Incirlik	21	N37 00.950 E035 26.883	243
AKR	Akrotiri	107	N34 34.765 E032 57.769	147
PHA	Paphos	79	N34 42.997 E032 28.963	35
RMD	Ramat David	84	N32 39.892 E035 11.265	136
OS66	Kuweires Military Aviation Institute	36	N36 11.362 E037 34.226	1200

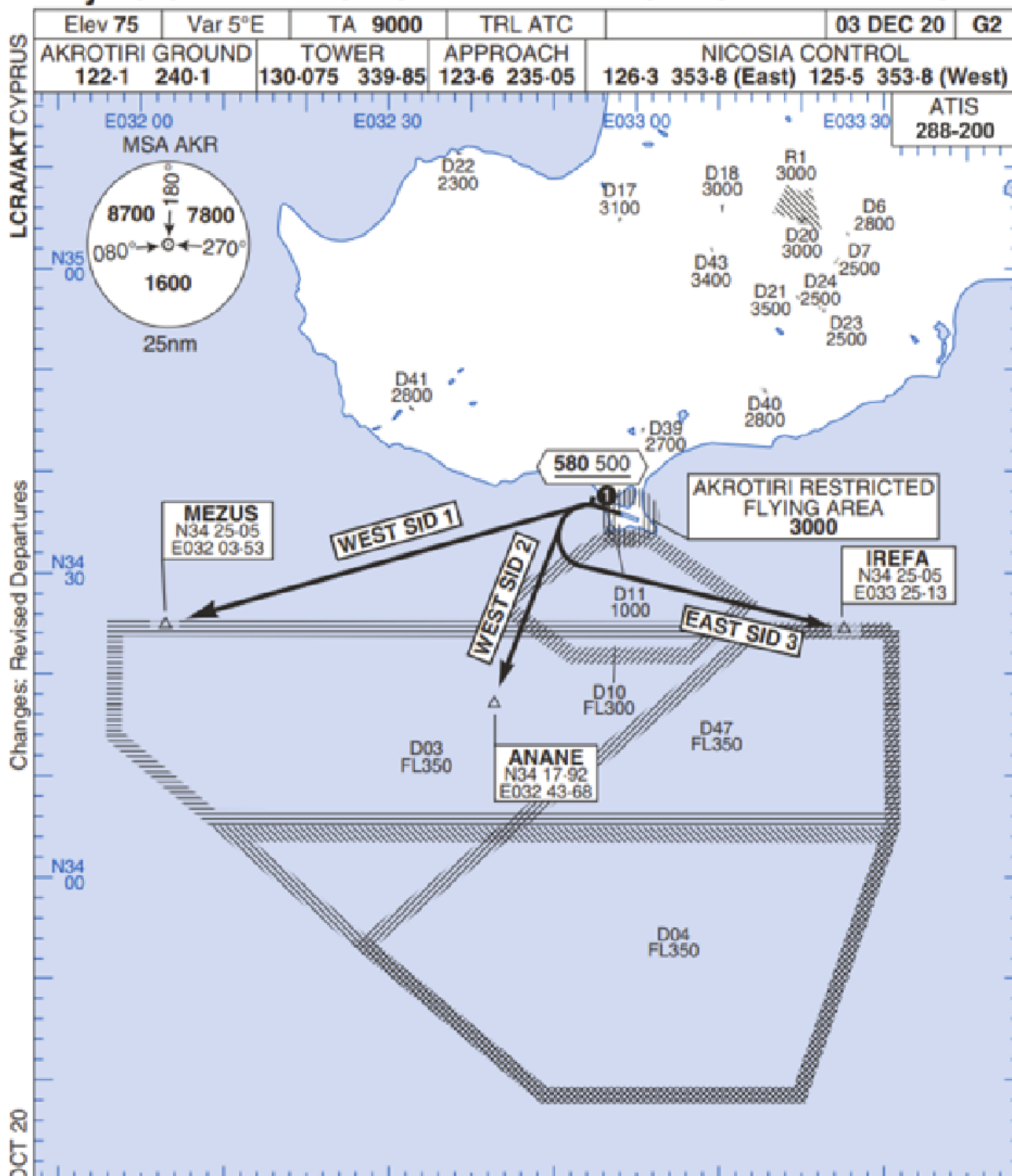
**FOR DCS
 USE ONLY**



ATIS	AKROTIRI GND	AKROTIRI TWR	OVERLORD CONTROL	TACAN	FIELD ELEVATION
288.20 MHz	240.10 122.10	339.85 130.075	377.8	AKR 107X	75 [ft] 23 [m]

Rwy 28 OMNIDIRECTIONAL DEPARTURES

AKROTIRI



No1 AIDU Last Amended 06 OCT 20

© UK MOD Crown Copyright 2020. No1 AIDU is not responsible for, and claims no right to, the content or accuracy of 3rd party documents/information.

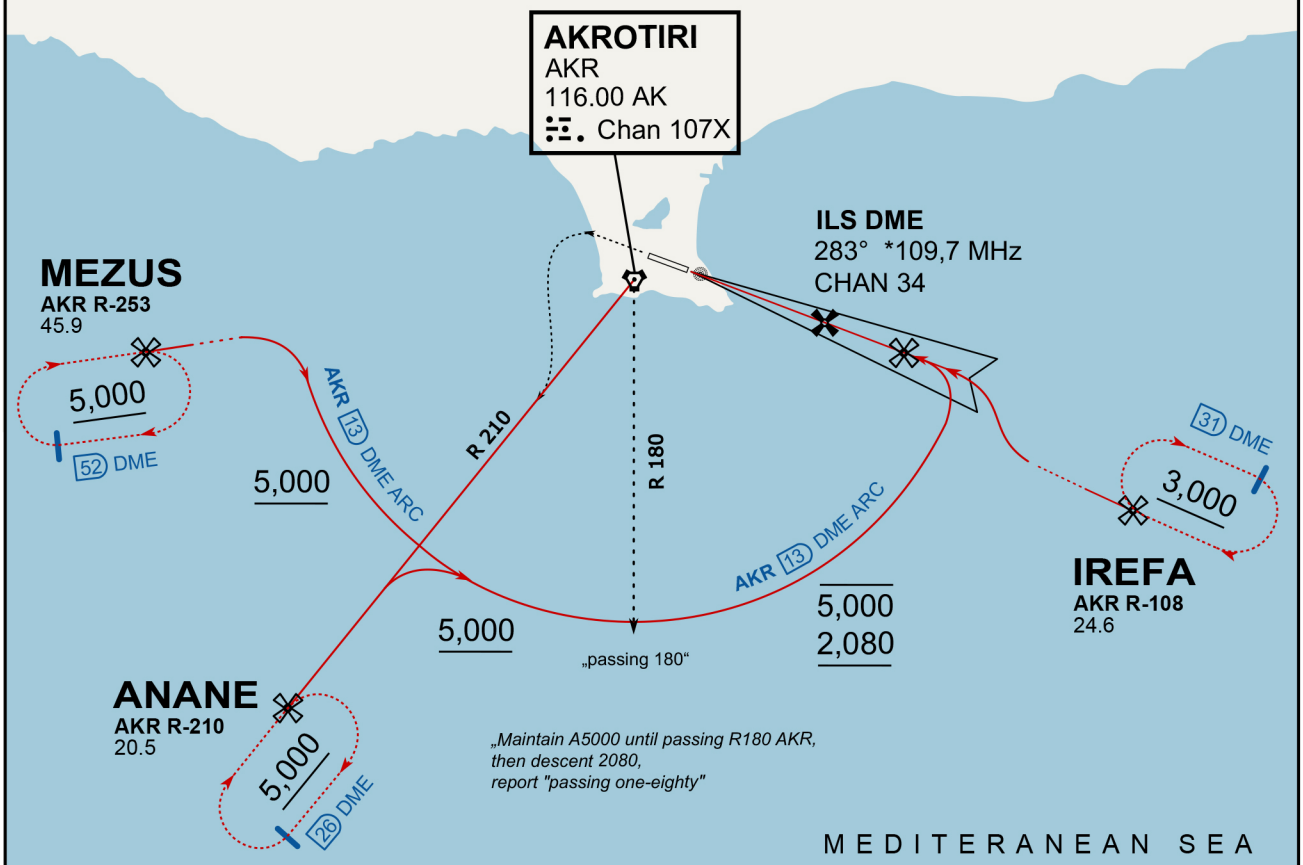
- 1. Minimum climb gradient 7% to 580 500 for obstacle and operational purposes.
- 2. No turns before DER.
- 3. Turns to north of Rwy prohibited.
- 4. Acft unable to locate MEZUS/ANANE/IREFA should request radar vectors from ATC.

SID	RWY	ROUTEING (Including Mnm Noise Routes)
WEST SID 1	28 283°M	Ahead on Rwy Tr to 580 500, turn left direct to MEZUS. SID terminates at 9000.
WEST SID 2		Ahead on Rwy Tr to 580 500, turn left direct to ANANE. SID terminates at 9000.
EAST SID 3		Ahead on Rwy Tr to 580 500, turn left direct to IREFA. SID terminates at 9000.

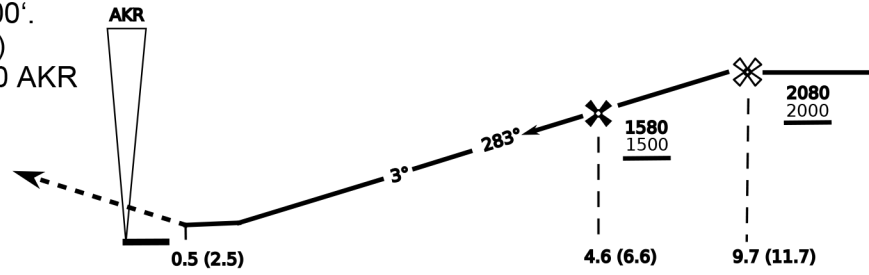
ATIS
288.200
AKROTIRI GROUND
122.100
AKROTIRI TOWER
339.850
APP (OVERLORD)
377.800

NOT FOR CIVIL USE

CAUTION: If unable to comply with restrictions advise ATC prior to departure.

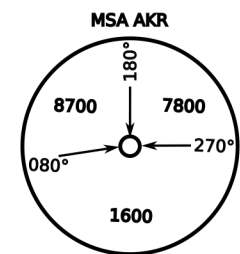


On Track 283° climb A 4.000'.
passing 2.080' (2.000' AAL)
turn left and intercept R-210 AKR
to ANANE.
Enter ANANE Holding.



THR Elev 74ft DME I-AK (DME AKR)

CAT	ILS/DME	LOC/DME	CIRCLE	GS (kts)				
				80	120	150	180	210
A	280 (200)	390 (320) 800m	680 (610) 1500m	FAF - MAPt (4.1NM) 3:06 2:03 1:38 1:22 1:10				
B	800m		680 (610) 1600m	RoD (fpm) 420 640 800 950 1110				
C	290 (210) 800m		780 (710) 2400m	- CIRCLING PROHIBITED N of Rwy - no AUTO coupled ILS approaches - when established on ILS contact Tower - Timing not Auth to define MAPt				
D	310 (230) 800m		780 (710) 3600m					
E	340 (260) 800m		1380 (1310) 3600m					



NOT AVAILABLE

NOT AVAILABLE