

**MISSION DATA CARD**

OPORD		Callsign		Mission		Date/Time		
2838/2024		Nazgul 6		Training		252000APR24		
Task	BVR Training					Freq		
AO	Sterile BVR					262.45		
Departure				Recovery				
RWY28 VFR				ILS 28				
#	Callsign		Pilot		IFF	TCN	LSR	NET
-2	Nazgul 6-2		Tank/TaB		1162	64Y	1562	
-4	Nazgul 6-4		Razorback		1164	1X	1564	

**LOADOUT**

A/A						GUN	
A/G						CHF	
POD						FLR	
TKS						FUEL	

**TOLD**

	Takeoff	Target	Joker	Bingo	Land
FUEL	22588				

**AIRBASES**

	Name	TCN	ATIS	GND	TWR	RWY	Elev	ILS
Dep	Akrotiri AFB	107X	288.2	240.1	339.85	28	62	109.7
Arr	Akrotiri AFB	107X	288.2	240.1	339.85	28	62	109.7
Div	Akrotiri AFB	107X	288.2	240.1	339.85	28	62	109.7

## OTHER FLIGHTS

Callsign	Mission	Airframe	Freq	TCN	Grpld	Laser
Python* 1	Training	1x AV-8B N/A	264.55	1/64		168X
AO		Task				
Tiger 1	Training	3x F/A-18C	261.15	1/64	1	155X
AO	Akamas Bombing Range	Task	AG Bomb and AAR Training Night			
Outlaw 5	Training	4x AH-64D	133.5	1/64		171X
AO	Akamas Bombing Range	Task	Bop-Up Attack			
Raptor 1	Training	4x F-16C	134.0	1/64		162X
AO		Task				
T-Rex 2	Training	4x A-10C	132.25	1/64	25	165X
AO	Insurgent Town	Task	Night Attacks and AAR			
Monster 1	Training	4x A-10C	132.15	1/64	21	161X
AO	Insurgent Town	Task	Night Attacks and AAR			

**RADIO CHANNELS**

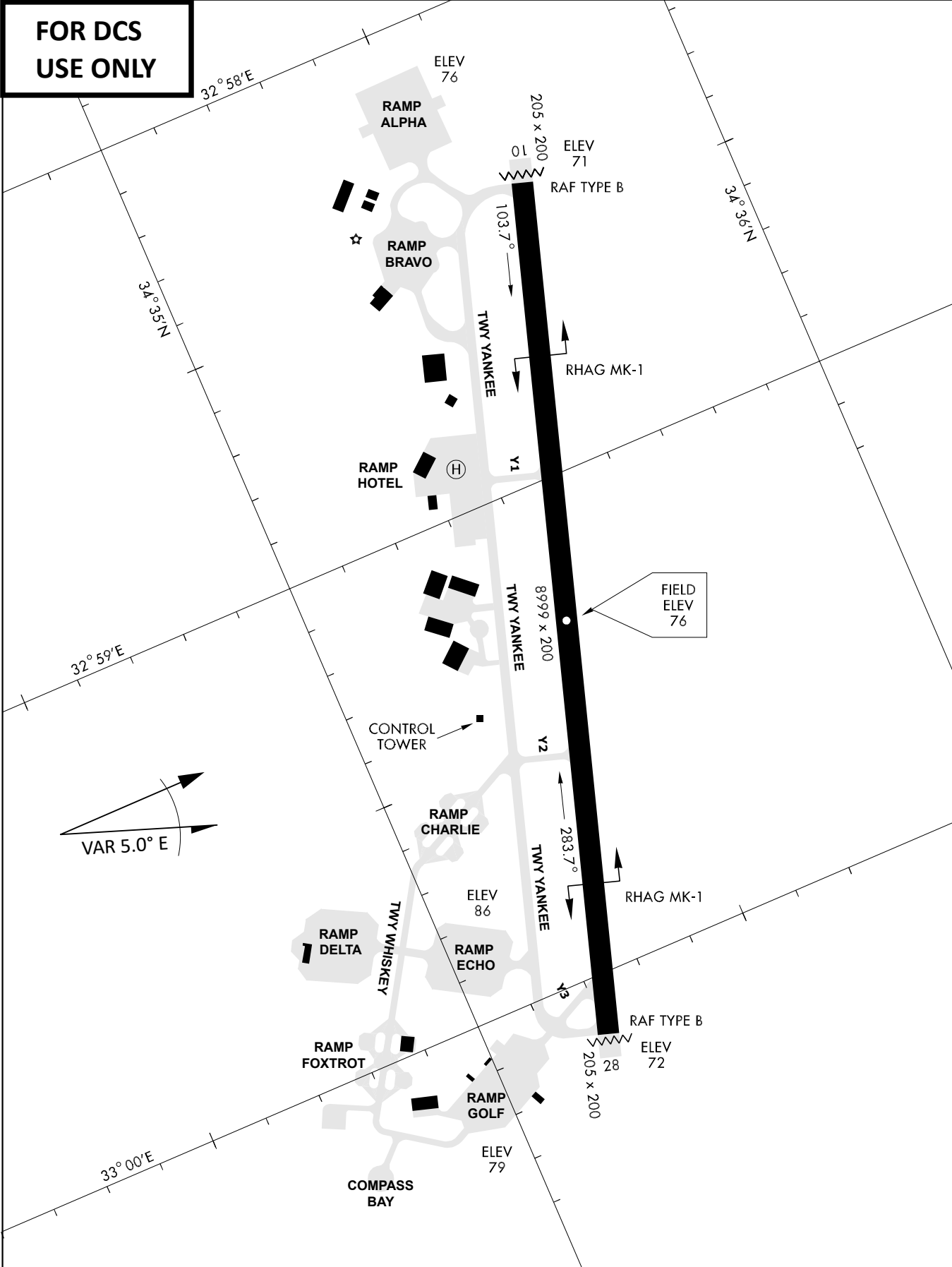
#	Freq	Name
1		Flight/Squadron specific
2	288.2	Akrotiri ATIS
3	240.1	Akrotiri Ground
4	339.85	Aktrotiri Tower
5	335.05	Akrotiri Approach
6	360.1	Incirlik Tower
7	371.35	Incirlik Ground
8	377.475	Incirlik ATIS
9		No Preset
10	127.3	Paphos ATIS
11	353.8	Paphos Tower
12	304.0	CVN-73 George Washington
13	302.0	LHA-1 Tarawa
14	259.0	CV-59 Forrestal
15		No Preset
16	377.8	Overlord
17	265.0	KC-135 Texaco-1 medium/slow
18	319.8	KC-135 Arco-1
19	360.8	KC-135MPRS Arco-2
20	256.0	S-3B Recovery Tanker

RAMROD										
0	1	2	3	4	5	6	7	8	9	
P	H	I	L	A	N	D	E	R	S	
KTC 1400 C										
	0	1	2	3	4	5	6	7	8	9
A	WIRT	MLG	AED	KF	VH	OQU	BN	YC	SJ	XP
B	JGER	NHO	MYW	XU	CS	VTL	BP	ID	KQ	AF
C	IQVB	WSF	JXN	CU	RP	KAL	YH	DE	MG	OT
D	BUQN	CYV	RIO	PW	AE	JTD	MG	FL	HK	XS
E	SDAI	TNL	CWO	FB	KH	QYG	JX	PM	ER	VU
F	AJNG	PHT	ICY	QS	MO	BLU	WD	RX	VE	KF
G	BGDJ	HAC	FRX	EW	QP	VOU	TS	ML	IY	NK
H	SFNU	BPT	CHY	JW	KV	XLM	DG	RO	QE	IA
I	VOFN	CRI	HDB	GY	JE	PMK	SU	TL	AW	XQ
J	ECIH	NRY	UJM	WG	DX	TLP	BV	AK	SQ	OF
K	RJVL	MXO	WIH	BE	NC	GSP	UT	KY	AD	QF
L	IERY	MDO	BLA	TQ	KG	WHC	XP	JU	SF	VN
M	VUHE	PRY	NBC	SK	DA	JXG	ML	FO	QT	IW
N	CMFS	BLN	HOD	RG	WV	PEU	KX	QA	TJ	YI
O	QTJX	DHE	NRK	AW	LB	OSU	YG	VM	FP	CI
P	GKQX	LHP	IYU	FR	VB	EJM	CD	OS	TW	NA
Q	RMHW	FSO	KJV	YG	EB	TUC	PX	QD	AL	IN
R	IXNO	RLE	DKC	JM	TQ	VHW	SP	AB	GY	FU
S	TWHE	NQB	RSL	KM	FC	GIU	XD	AY	VJ	PO
T	OLER	VPK	SHY	TW	AN	JFB	GX	UC	IQ	DM
U	APWR	FYM	SDQ	GB	VL	UEC	JO	NX	TH	IK
V	GHWP	MQX	OCY	DR	KE	LFB	AN	TJ	IU	SV
W	PFEY	QUR	WMC	AG	IS	JNK	BO	XT	DV	HL
X	IQBW	HDT	LCU	FA	ME	OJK	GP	XY	RS	VN
Y	UWQA	HSE	VPM	NI	OD	RXC	KJ	BY	TL	GF

**NAVAIDS**

<b>Id</b>	<b>Name</b>	<b>Channel</b>	<b>Position</b>	<b>Elevation</b>
DAN	Incirlik	21	N37 00.950 E035 26.883	243
AKR	Akrotiri	107	N34 34.765 E032 57.769	147
PHA	Paphos	79	N34 42.997 E032 28.963	35
RMD	Ramat David	84	N32 39.892 E035 11.265	136
OS66	Kuweires Military Aviation Institute	36	N36 11.362 E037 34.226	1200

**FOR DCS  
 USE ONLY**

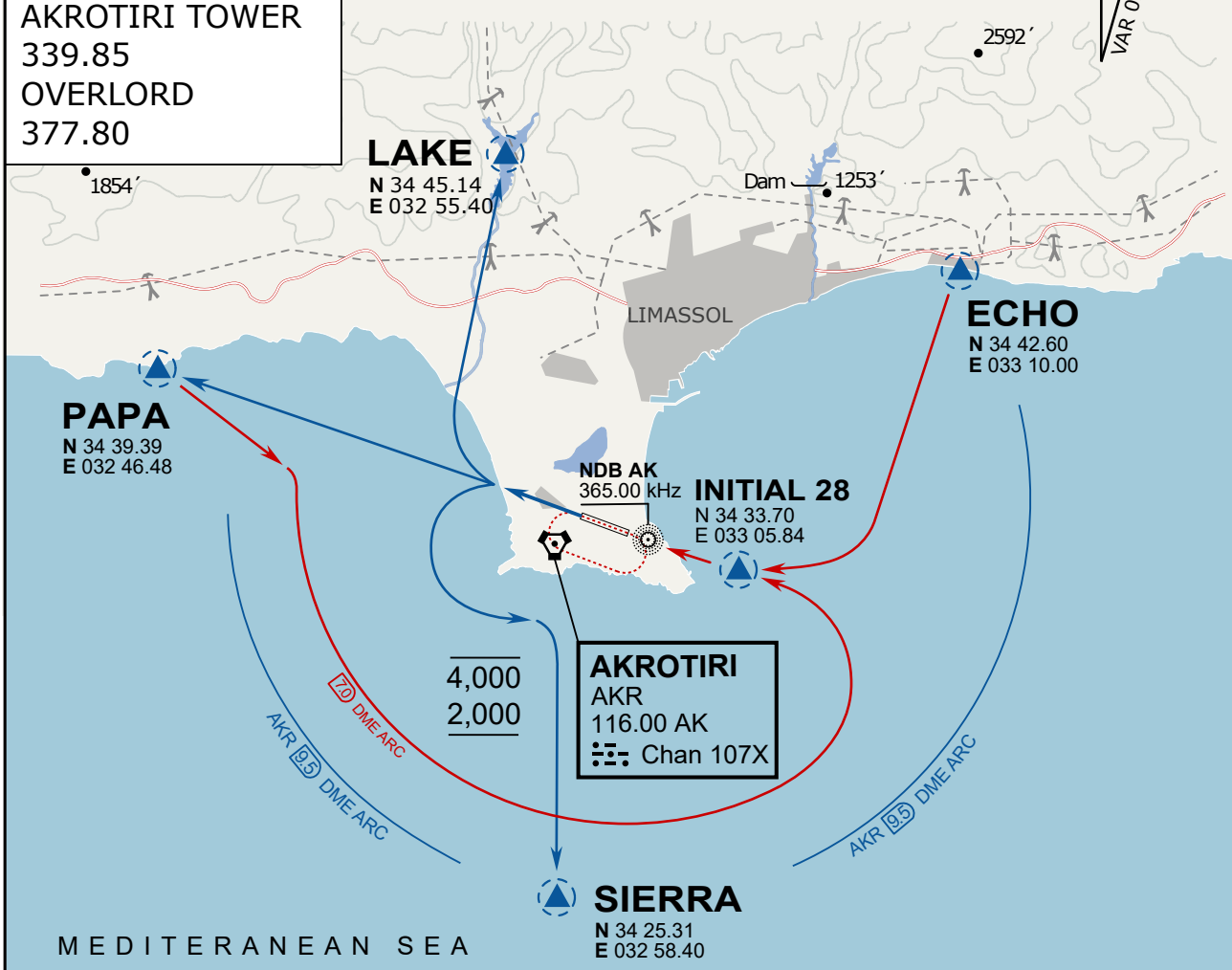


ATIS	AKROTIRI GND	AKROTIRI TWR	OVERLORD CONTROL	TACAN	FIELD ELEVATION
288.20 MHz	240.10   122.10	339.85   130.075	377.8	AKR 107X	<b>75 [ft] 23 [m]</b>

**ATIS**  
 288.20  
**AKROTIRI GROUND**  
 240.10  
**AKROTIRI TOWER**  
 339.85  
**OVERLORD**  
 377.80

### NOT FOR CIVIL USE

CAUTION: If unable to comply  
 with restrictions advise ATC  
 prior to departure.



### ARR / DEP ROUTE DESCRIPTION

#### STRAIGHT-IN RWY28

Pass ENTRY at 5.000' MSL or below, pass INITIAL at 1.500' MSL or below.

#### OVERHEAD BREAK RWY28

Pass ENTRY at 5.000' MSL or below, pass INITIAL at 2.000' MSL, break to the south.

#### DEPARTURE GENERAL

Pass Departure end of runway at 1.000' or below.

DEP RWY28 PAPA: Fly straight ahead to exit.

DEP RWY28 LAKE: Fly straight ahead until coast, than right turn direct exit.

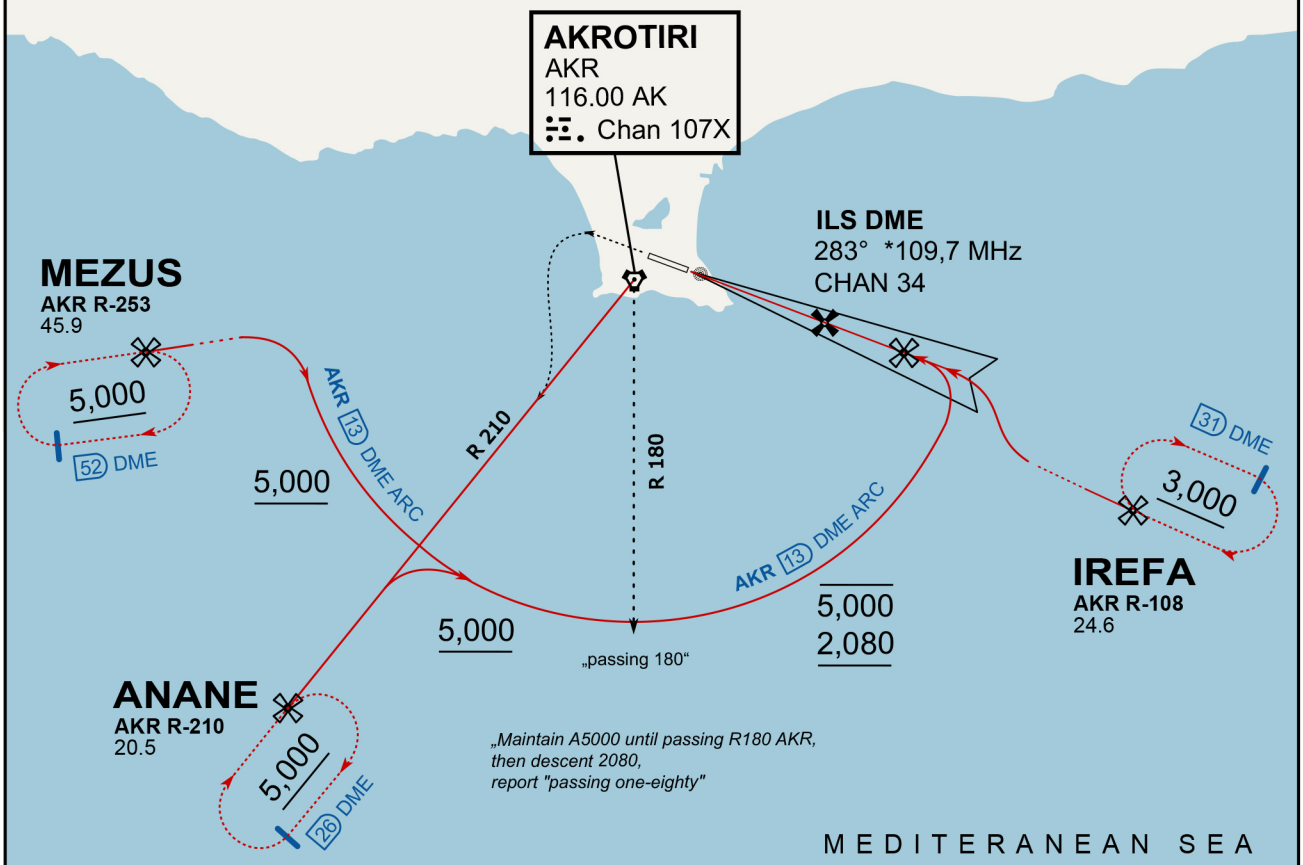
DEP RWY28 SIERRA: Fly straight ahead until coastline, then climbing left turn, intercept AKR R-180 to exit.

DEP ECHO: no exit.

ATIS  
288.200  
AKROTIRI GROUND  
122.100  
AKROTIRI TOWER  
339.850  
APP (OVERLORD)  
377.800

NOT FOR CIVIL USE

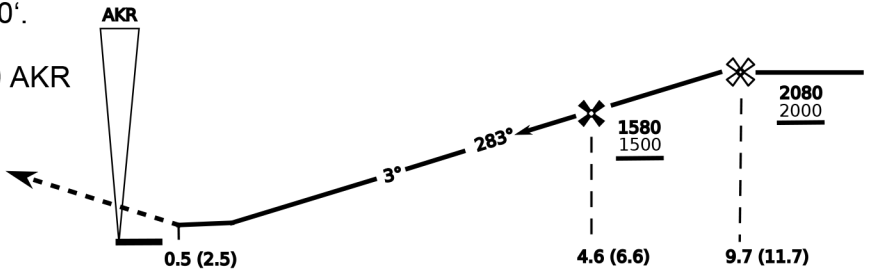
CAUTION: If unable to comply with restrictions advise ATC prior to departure.



„Maintain A5000 until passing R180 AKR, then descent 2080, report "passing one-eighty"“

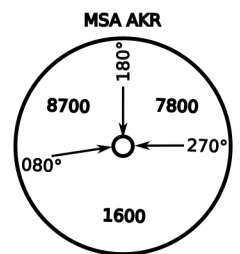
MEDITERANEAN SEA

On Track 283° climb A 4.000'.  
passing 2.080' (2.000' AAL)  
turn left and intercept R-210 AKR  
to ANANE.  
Enter ANANE Holding.



THR Elev 74ft DME I-AK (DME AKR)

CAT	ILS/DME	LOC/DME	CIRCLE	GS (kts)				
				80	120	150	180	210
A	280 (200)	390 (320) 800m	680 (610) 1500m	FAF - MAPt (4.1NM) 3:06 2:03 1:38 1:22 1:10				
B	800m		680 (610) 1600m	RoD (fpm) 420 640 800 950 1110				
C	290 (210) 800m		780 (710) 2400m	- CIRCLING PROHIBITED N of Rwy - no AUTO coupled ILS approaches - when established on ILS contact Tower - Timing not Auth to define MAPt				
D	310 (230) 800m		780 (710) 3600m					
E	340 (260) 800m		1380 (1310) 3600m					





ATIS

288.20

AKROTIRI GROUND

240.10

AKROTIRI TOWER

339.85

OVERLORD

377.80

NOT FOR CIVIL USE

CAUTION: If unable to comply  
with restrictions advise ATC  
prior to departure.

## ARR / DEP ROUTE DESCRIPTION

ARRIVAL GENERAL

Pass Entry at 5.000' or below. Overhead Brake RWY 10: pass INITIAL 10 at 2.000' MSL.  
Straight-in RWY 10 : pass INITIAL 1.500' or below.

ARR RWY10 PAPA / LAKE: Direct initial.

ARR RWY10 SIERRA: Intercept ARC 7 of AKR to INITIAL 10.

ARR ECHO: no ENTRY.

DEPARTURE GENERAL

Pass Departure end of runway at 1.000' AGL or below. Keep RWY heading until coastline.

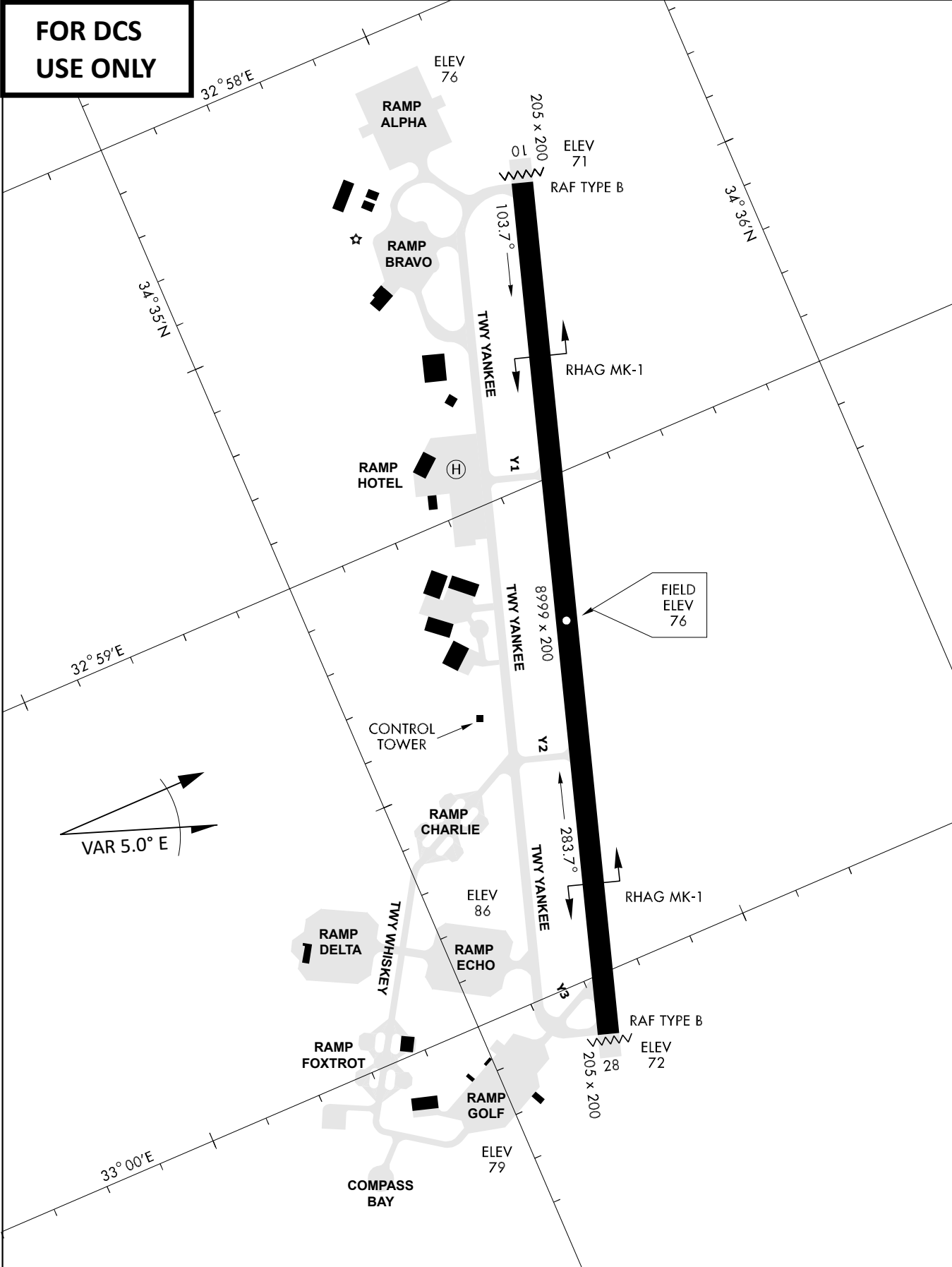
DEP RWY10 ECHO: Direct EXIT.

DEP RWY10 SIERRA: Climbing right turn, intercept R180 AKR to Sierra.

DEP RWY10 PAPA: Climbing right turn until R180 AKR, then direct Papa

DEP LAKE: no EXIT.

**FOR DCS  
 USE ONLY**



ATIS	AKROTIRI GND	AKROTIRI TWR	OVERLORD CONTROL	TACAN	FIELD ELEVATION
288.20 MHz	240.10   122.10	339.85   130.075	377.8	AKR 107X	<b>75 [ft] 23 [m]</b>