

**MISSION DATA CARD**

OPORD		Callsign		Mission		Date/Time	
2837/2024		Raptor 1		Training		252000APR24	
Task							Freq
AO							134.0
Departure				Recovery			
RWY28 SID				ILS 28			
#	Callsign	Pilot		IFF	TCN	LSR	NET
-1	Raptor 1-1	Nerkub		1611	1Y	1621	
-2	Raptor 1-2	Hercules		1612	64Y	1622	
-3	Raptor 1-3	Jinx		1613	64X	1623	
-4	Raptor 1-4	Void		1614	1X	1624	

**LOADOUT**

A/A	2xA120C, 2xA9X				GUN	100% HEI-T	
A/G					CHF	60	
POD					FLR	60	
TKS	3xFT300				FUEL	100%	

**TOLD**

	Takeoff	Target	Joker	Bingo	Land		
FUEL	13172						

**AIRBASES**

	Name	TCN	ATIS	GND	TWR	RWY	Elev	ILS
Dep	Akrotiri AFB	107X	288.2	240.1	339.85	28	62	109.7
Arr	Akrotiri AFB	107X	288.2	240.1	339.85	28	62	109.7
Div	Incirlik AFB	21X	377.47 5	371.35	360.1	5	190	

**FLIGHTPLAN**

#	Name	Navaid/Coords/DME	ALT	TOT
1	IREFA	N34 25 19.679 E033 26 39.870	9000	
2	EMILI	N34 38 23.355 E034 02 35.169	15000	
3	ALSUS	N35 02 05.989 E034 39 23.901	25000	
4	DELTA	N36 45 54.959 E035 27 39.360	9000	
5	CHRLE	N37 10 56.023 E035 40 52.569	5000	
6	ILS INC	N37 04 36.568 E035 34 56.339	3000	
7	Incirlik AB	N36 59 39 E035 24 45	238	
8	ECHO	N36 50 40.298 E035 13 10.622	3000	
9	TARSU	N36 37 32.950 E034 31 12.481	15000	
10	BAPAX	N35 42 05.950 E034 10 25.148	25000	
11	LOSOS	N34 42 35.345 E033 22 11.397	8000	
12	IREFA	N34 25 19.679 E033 26 39.870	4000	
13	RAF Akrotiri	N34 35 26 E032 59 17	74	

## NOTES

Incirlik RWY 23 ILS 111.70 (DA 438)  
Akrotiri RWY 28 ILS 109.70 (DA 340)  
Climb 300IAS Cruse 350 IAS

## OTHER FLIGHTS

Callsign	Mission	Airframe	Freq	TCN	Grpld	Laser
Python* 1	Training	1x AV-8B N/A	264.55	1/64		168X
AO		Task				
Tiger 1	Training	3x F/A-18C	261.15	1/64	1	155X
AO	Akamas Bombing Range	Task	AG Bomb and AAR Training Night			
Outlaw 5	Training	4x AH-64D	133.5	1/64		171X
AO	Akamas Bombing Range	Task	Bop-Up Attack			
Nazgul 6	Training	4x F-15E	262.45	1/64		156X
AO	Sterile BVR	Task	BVR Training			
T-Rex 2	Training	4x A-10C	132.25	1/64	25	165X
AO	Insurgent Town	Task	Night Attacks and AAR			
Monster 1	Training	4x A-10C	132.15	1/64	21	161X
AO	Insurgent Town	Task	Night Attacks and AAR			

**RADIO CHANNELS**

#	Freq	Name
1		Flight/Squadron specific
2	288.2	Akrotiri ATIS
3	240.1	Akrotiri Ground
4	339.85	Aktrotiri Tower
5	335.05	Akrotiri Approach
6	360.1	Incirlik Tower
7	371.35	Incirlik Ground
8	377.475	Incirlik ATIS
9		No Preset
10	127.3	Paphos ATIS
11	353.8	Paphos Tower
12	304.0	CVN-73 George Washington
13	302.0	LHA-1 Tarawa
14	259.0	CV-59 Forrestal
15		No Preset
16	377.8	Overlord
17	265.0	KC-135 Texaco-1 medium/slow
18	319.8	KC-135 Arco-1
19	360.8	KC-135MPRS Arco-2
20	256.0	S-3B Recovery Tanker

RAMROD										
0	1	2	3	4	5	6	7	8	9	
P	H	I	L	A	N	D	E	R	S	
KTC 1400 C										
	0	1	2	3	4	5	6	7	8	9
A	WIRT	MLG	AED	KF	VH	OQU	BN	YC	SJ	XP
B	JGER	NHO	MYW	XU	CS	VTL	BP	ID	KQ	AF
C	IQVB	WSF	JXN	CU	RP	KAL	YH	DE	MG	OT
D	BUQN	CYV	RIO	PW	AE	JTD	MG	FL	HK	XS
E	SDAI	TNL	CWO	FB	KH	QYG	JX	PM	ER	VU
F	AJNG	PHT	ICY	QS	MO	BLU	WD	RX	VE	KF
G	BGDJ	HAC	FRX	EW	QP	VOU	TS	ML	IY	NK
H	SFNU	BPT	CHY	JW	KV	XLM	DG	RO	QE	IA
I	VOFN	CRI	HDB	GY	JE	PMK	SU	TL	AW	XQ
J	ECIH	NRY	UJM	WG	DX	TLP	BV	AK	SQ	OF
K	RJVL	MXO	WIH	BE	NC	GSP	UT	KY	AD	QF
L	IERY	MDO	BLA	TQ	KG	WHC	XP	JU	SF	VN
M	VUHE	PRY	NBC	SK	DA	JXG	ML	FO	QT	IW
N	CMFS	BLN	HOD	RG	WV	PEU	KX	QA	TJ	YI
O	QTJX	DHE	NRK	AW	LB	OSU	YG	VM	FP	CI
P	GKQX	LHP	IYU	FR	VB	EJM	CD	OS	TW	NA
Q	RMHW	FSO	KJV	YG	EB	TUC	PX	QD	AL	IN
R	IXNO	RLE	DKC	JM	TQ	VHW	SP	AB	GY	FU
S	TWHE	NQB	RSL	KM	FC	GIU	XD	AY	VJ	PO
T	OLER	VPK	SHY	TW	AN	JFB	GX	UC	IQ	DM
U	APWR	FYM	SDQ	GB	VL	UEC	JO	NX	TH	IK
V	GHWP	MQX	OCY	DR	KE	LFB	AN	TJ	IU	SV
W	PFEY	QUR	WMC	AG	IS	JNK	BO	XT	DV	HL
X	IQBW	HDT	LCU	FA	ME	OJK	GP	XY	RS	VN
Y	UWQA	HSE	VPM	NI	OD	RXC	KJ	BY	TL	GF

**NAVAIDS**

<b>Id</b>	<b>Name</b>	<b>Channel</b>	<b>Position</b>	<b>Elevation</b>
DAN	Incirlik	21	N37 00.950 E035 26.883	243
AKR	Akrotiri	107	N34 34.765 E032 57.769	147
PHA	Paphos	79	N34 42.997 E032 28.963	35
RMD	Ramat David	84	N32 39.892 E035 11.265	136
OS66	Kuweires Military Aviation Institute	36	N36 11.362 E037 34.226	1200

**FOR DCS  
 USE ONLY**

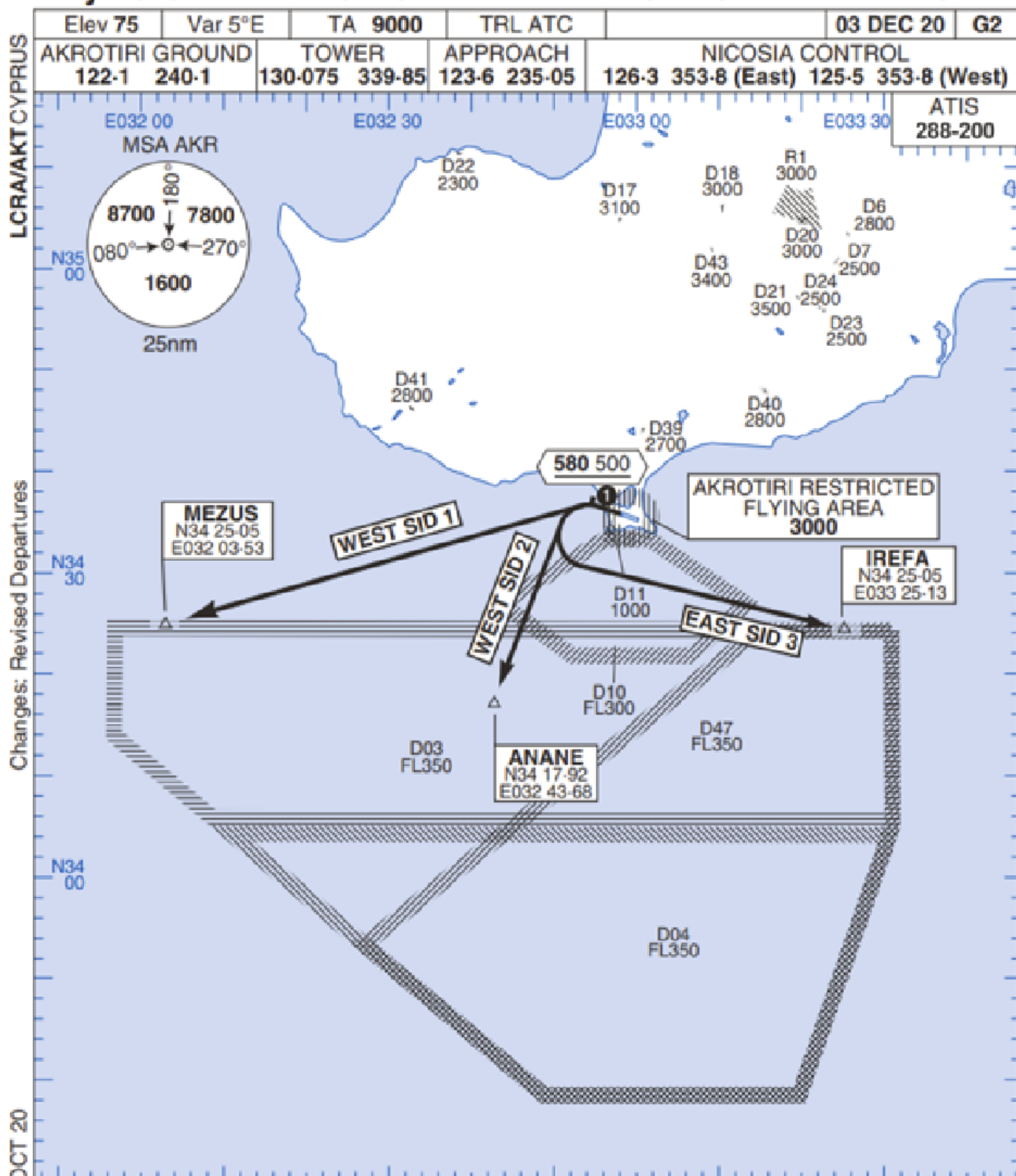


ATIS	AKROTIRI GND	AKROTIRI TWR	OVERLORD CONTROL	TACAN	FIELD ELEVATION
288.20 MHz	240.10   122.10	339.85   130.075	377.8	AKR 107X	<b>75 [ft] 23 [m]</b>



# Rwy 28 OMNIDIRECTIONAL DEPARTURES

# AKROTIRI



No1 AIDU Last Amended 06 OCT 20

© UK MOD Crown Copyright 2020. No1 AIDU is not responsible for, and claims no right to, the content or accuracy of 3rd party documents/information.

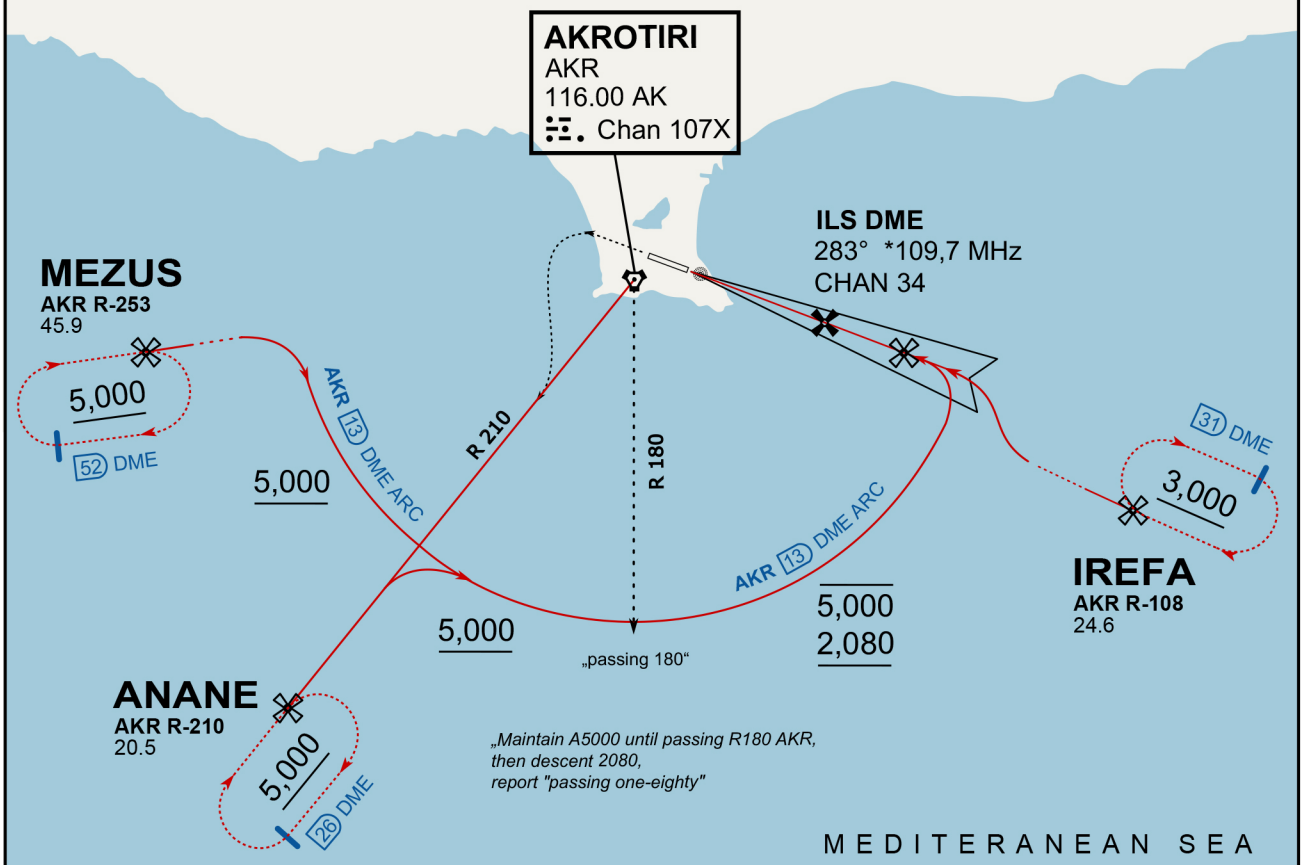
- 1. Minimum climb gradient 7% to 580 500 for obstacle and operational purposes.
- 2. No turns before DER.
- 3. Turns to north of Rwy prohibited.
- 4. Acft unable to locate MEZUS/ANANE/IREFA should request radar vectors from ATC.

SID	RWY	ROUTEING (Including Mnm Noise Routes)
WEST SID 1	28 283°M	Ahead on Rwy Tr to 580 500, turn left direct to MEZUS. SID terminates at 9000.
WEST SID 2		Ahead on Rwy Tr to 580 500, turn left direct to ANANE. SID terminates at 9000.
EAST SID 3		Ahead on Rwy Tr to 580 500, turn left direct to IREFA. SID terminates at 9000.

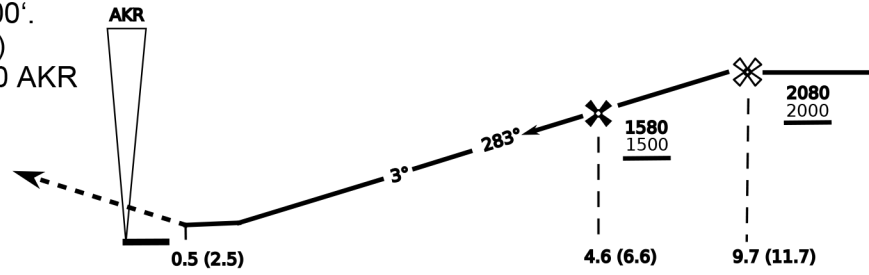
ATIS  
288.200  
AKROTIRI GROUND  
122.100  
AKROTIRI TOWER  
339.850  
APP (OVERLORD)  
377.800

NOT FOR CIVIL USE

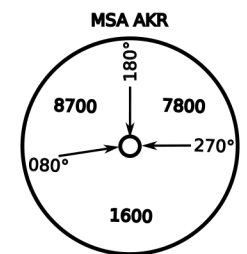
CAUTION: If unable to comply with restrictions advise ATC prior to departure.



On Track 283° climb A 4.000'.  
passing 2.080' (2.000' AAL)  
turn left and intercept R-210 AKR  
to ANANE.  
Enter ANANE Holding.



CAT	ILS/DME	LOC/DME	CIRCLE	GS (kts)				
				80	120	150	180	210
A	280 (200)	390 (320) 800m	680 (610) 1500m	FAF - MAPt (4.1NM)				
B	800m		680 (610) 1600m	3:06	2:03	1:38	1:22	1:10
C	290 (210) 800m		780 (710) 2400m	RoD (fpm)				
D	310 (230) 800m		780 (710) 3600m	420	640	800	950	1110
E	340 (260) 800m		1380 (1310) 3600m	- CIRCLING PROHIBITED N of Rwy - no AUTO coupled ILS approaches - when established on ILS contact Tower - Timing not Auth to define MAPt				



ATIS  
377.475 (#8)

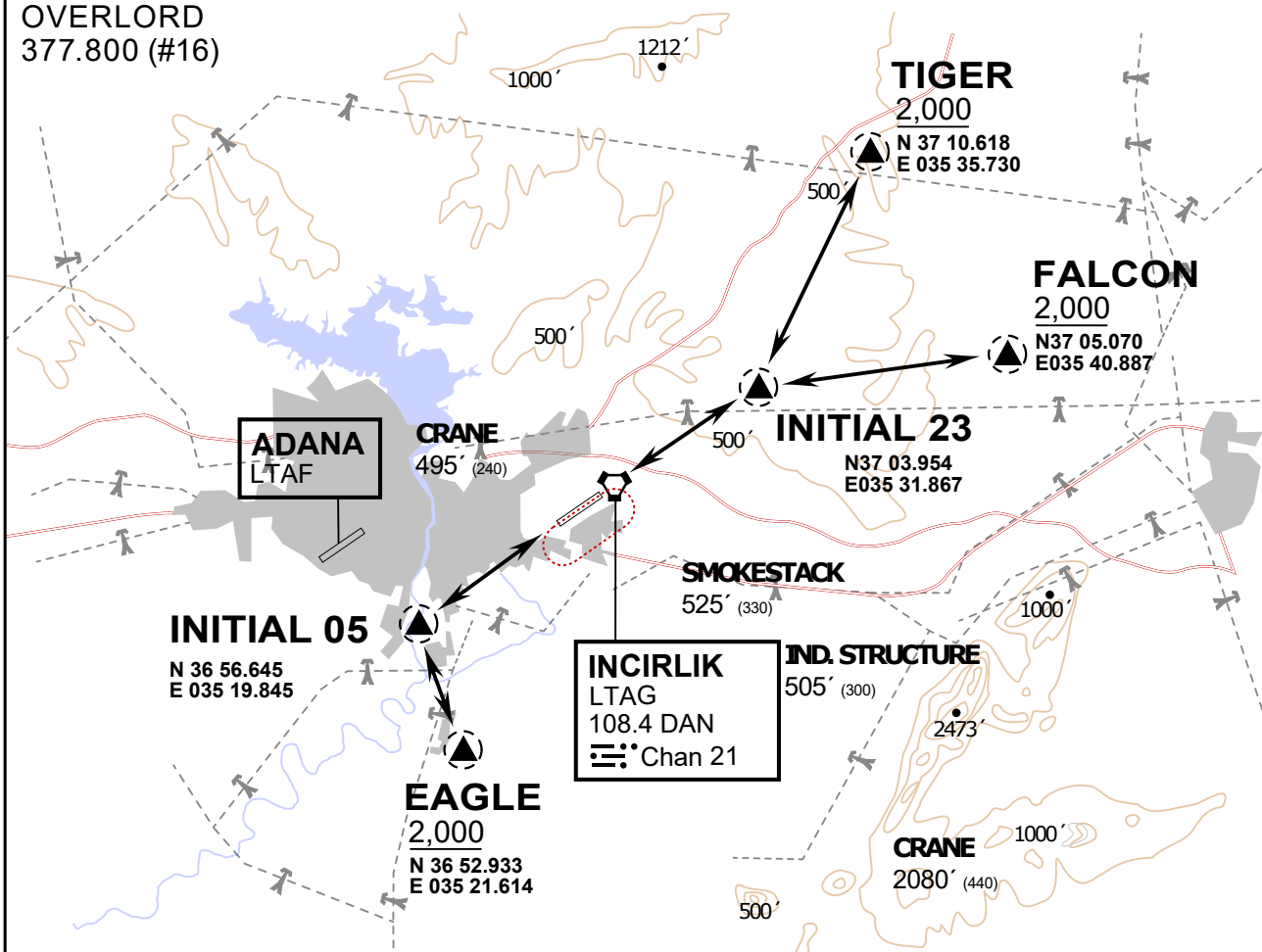
INCIRLIK GROUND  
371.3500 (#7)

INCIRLIK TOWER  
360.100 (#6)

OVERLORD  
377.800 (#16)

NOT FOR CIVIL USE

CAUTION: If unable to comply with restrictions advise ATC prior to departure.



vJaBoG32 ETTR NAV CHART

**ARR / DEP ROUTE DESCRIPTION**

STRAIGHT-IN RWY 05 / 23

Pass entry EAGLE / TIGER / FALCON at 2000' and INITIAL at 1500'

OVERHEAD BREAK RWY 05 / 23

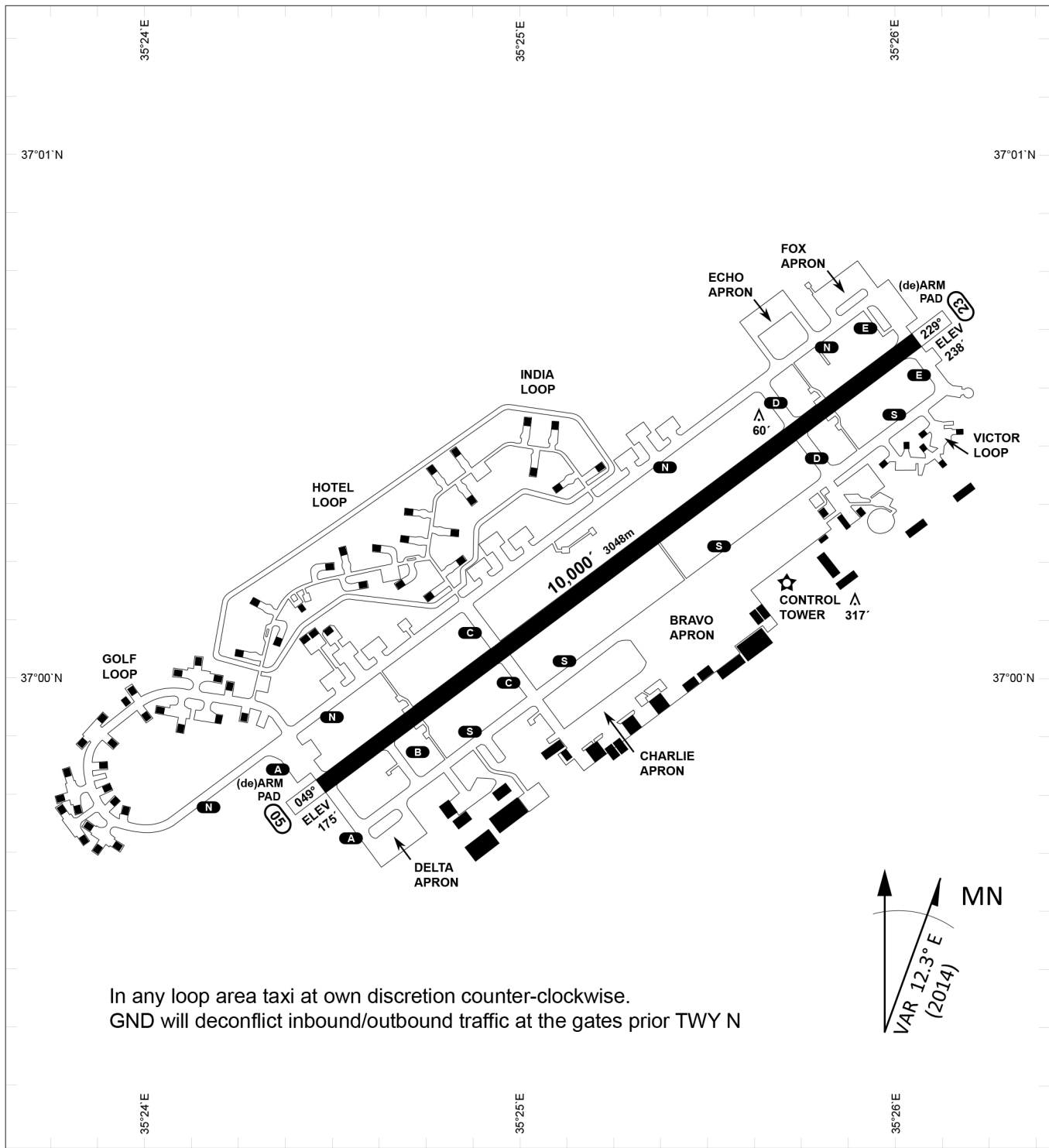
Pass entry EAGLE / TIGER / FALCON at 2500', pass INITIAL at 2000' break to the south at 2000' pattern altitude.

HELICOPTER ROUTES

Pass entry EAGLE / TIGER / FALCON at 1000' or below, pass INITIAL at 1000' break to the south at 1000' pattern altitude.

DEPARTURE ALL DIRECTIONS

pass DER below 1500ft



In any loop area taxi at own discretion counter-clockwise.  
 GND will deconflict inbound/outbound traffic at the gates prior TWY N

PAR	RWY	CAT	MINIMA	ARP	ELEV	Scale 1:35'500 0 300 600 900 1200 1500 [m] 0 1000 2000 3000 4000 5000 [ft]
	21L	A B D E	2057 - 0.8 200 (200-0.8/1.6) GS 3°	37°0'56.000" N	1857 [ft]	
SRA	21R	A C D E	2257 - 1.2 350 (350-1.2/1.6)	35°26'53.000" E	566 [m]	
	3L	A C D E	2257 - 1.2 350 (350-1.2/1.6)			

RWY	TORA	TORA from D	TORA from B	COURSE	PSN THR	ALS
23	10,000 [ft] 3048 [m]	8,000 [ft] 2438 [m]		235°	37°00.611'N 035°26.368'E	⊙
05	10,000 [ft] 3048 [m]		9,000 [ft] 2743 [m]	055°	36°59.043'N 035°24.760'E	⊙

ATIS	INCIRLIK GROUND	INCIRLIK TOWER	CONTROL	TACAN	ILS RWY 05	ILS RWY 23
377.475	371.350   123.020	360.100   121.100	337.800	DAN21x	109.3MHz	111.7MHz