

MISSION DATA CARD

OPORD		Callsign		Mission		Date/Time		
2834/2024		Tiger 1		Training		252200APR24		
Task	AG Bomb and AAR Training Night					Freq		
AO	Akamas Bombing Range					261.15		
Departure				Recovery				
RWY28 VFR				TAC 28				
#	Callsign		Pilot		IFF	TCN	LSR	NET
-1	Tiger 1-1		Kosmoss		1011	1Y	1551	01/01
-2	Tiger 1-2		Hawk		1012	64Y	1552	01/02
-3	Tiger 1-3		Ghost		1013	64X	1553	01/03

LOADOUT

A/A	2xA9X, A120C				GUN	100% HEI-T	
A/G	4xM83				CHF	90	
POD	TGP				FLR	30	
TKS	FPU-8A				FUEL	100%	

TOLD

	Takeoff	Target	Joker	Bingo	Land
FUEL	13047			4000	2500

AIRBASES

	Name	TCN	ATIS	GND	TWR	RWY	Elev	ILS
Dep	Akrotiri AFB	107X	288.2	240.1	339.85	28	62	109.7
Arr	Akrotiri AFB	107X	288.2	240.1	339.85	28	62	109.7
Div	Paphos Internationl	79X	127.3		353.8	29	40	108.9

FLIGHTPLAN

#	Name	Navaid/Coords/DME	ALT	TOT
1	Lake	N34 45 01.834 E032 55 16.687	4000	
2	Fence In	N35 09 30.381 E032 32 31.330	20000	
3	IP	N35 09 31.147 E032 23 37.116	20000	
4	AKB.T4	N35 04 58.278 E032 18 10.931	105	
5	AKB.T1	N35 04 22.229 E032 19 05.602	69	
6	Fence Out	N35 06 23.291 E032 30 19.214	20000	
7	AAR TEX2	N34 29 30.459 E034 12 41.701	15000	
8	Intial 28	N34 33 41.942 E033 05 49.747	1000	
9	RAF Akrotiri	N34 35 26 E032 59 17	65	

COMMS

Radio	Usage
1	02(ATIS) ,04(AK), 16(OV), 15(TX2), 16(OV), 04(AK)
2	Inhouse 261.15
3	MIDS A: 22 / B: 44

SUPPORT**Tanker**

Callsign	TCN	Freq	ALT	TAS
TEXACO 2	44Y	244.78	FL150	250
	Pos	TEXACO2: (N3424 E03403)		

AWACS

Callsign	Freq	ALT	Pos
OVERLORD2	377.8	FL320	N3713 E03643 - N3714 E03749

OTHER FLIGHTS

Callsign	Mission	Airframe	Freq	TCN	Grpld	Laser
Python* 1	Training	1x AV-8B N/A	264.55	1/64		168X
AO		Task				
Outlaw 5	Training	4x AH-64D	133.5	1/64		171X
AO	Akamas Bombing Range	Task	Bop-Up Attack			
Raptor 1	Training	4x F-16C	134.0	1/64		162X
AO		Task				
Nazgul 6	Training	4x F-15E	262.45	1/64		156X
AO	Sterile BVR	Task	BVR Training			
T-Rex 2	Training	4x A-10C	132.25	1/64	25	165X
AO	Insurgent Town	Task	Night Attacks and AAR			
Monster 1	Training	4x A-10C	132.15	1/64	21	161X
AO	Insurgent Town	Task	Night Attacks and AAR			

RADIO CHANNELS

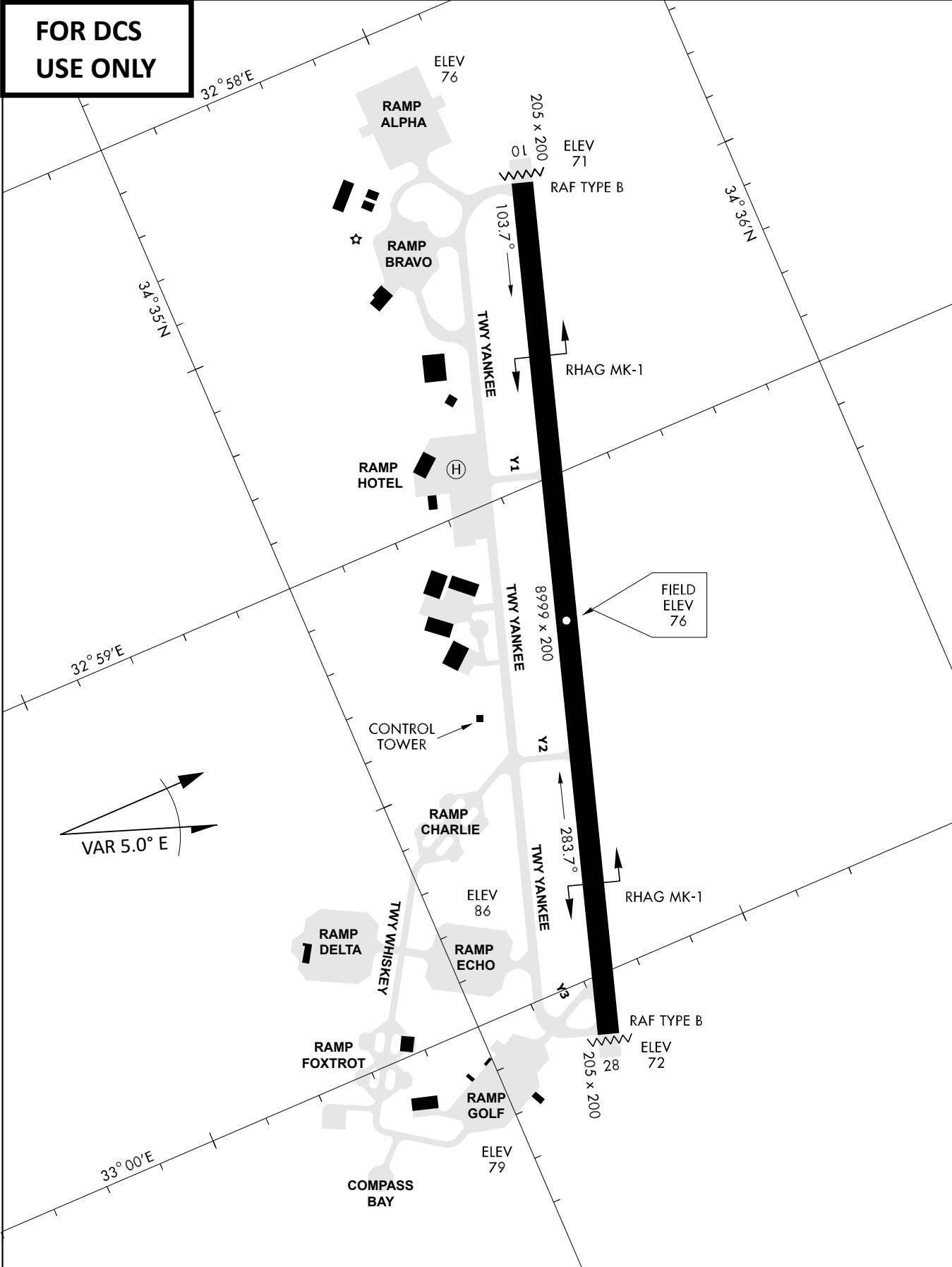
#	Freq	Name
1		Flight/Squadron specific
2	288.2	Akrotiri ATIS
3	240.1	Akrotiri Ground
4	339.85	Aktrotiri Tower
5	335.05	Akrotiri Approach
6	360.1	Incirlik Tower
7	371.35	Incirlik Ground
8	377.475	Incirlik ATIS
9		No Preset
10	127.3	Paphos ATIS
11	353.8	Paphos Tower
12	304.0	CVN-73 George Washington
13	302.0	LHA-1 Tarawa
14	259.0	CV-59 Forrestal
15		No Preset
16	377.8	Overlord
17	265.0	KC-135 Texaco-1 medium/slow
18	319.8	KC-135 Arco-1
19	360.8	KC-135MPRS Arco-2
20	256.0	S-3B Recovery Tanker

RAMROD										
0	1	2	3	4	5	6	7	8	9	
P	H	I	L	A	N	D	E	R	S	
KTC 1400 C										
	0	1	2	3	4	5	6	7	8	9
A	WIRT	MLG	AED	KF	VH	OQU	BN	YC	SJ	XP
B	JGER	NHO	MYW	XU	CS	VTL	BP	ID	KQ	AF
C	IQVB	WSF	JXN	CU	RP	KAL	YH	DE	MG	OT
D	BUQN	CYV	RIO	PW	AE	JTD	MG	FL	HK	XS
E	SDAI	TNL	CWO	FB	KH	QYG	JX	PM	ER	VU
F	AJNG	PHT	ICY	QS	MO	BLU	WD	RX	VE	KF
G	BGDJ	HAC	FRX	EW	QP	VOU	TS	ML	IY	NK
H	SFNU	BPT	CHY	JW	KV	XLM	DG	RO	QE	IA
I	VOFN	CRI	HDB	GY	JE	PMK	SU	TL	AW	XQ
J	ECIH	NRY	UJM	WG	DX	TLP	BV	AK	SQ	OF
K	RJVL	MXO	WIH	BE	NC	GSP	UT	KY	AD	QF
L	IERY	MDO	BLA	TQ	KG	WHC	XP	JU	SF	VN
M	VUHE	PRY	NBC	SK	DA	JXG	ML	FO	QT	IW
N	CMFS	BLN	HOD	RG	WV	PEU	KX	QA	TJ	YI
O	QTJX	DHE	NRK	AW	LB	OSU	YG	VM	FP	CI
P	GKQX	LHP	IYU	FR	VB	EJM	CD	OS	TW	NA
Q	RMHW	FSO	KJV	YG	EB	TUC	PX	QD	AL	IN
R	IXNO	RLE	DKC	JM	TQ	VHW	SP	AB	GY	FU
S	TWHE	NQB	RSL	KM	FC	GIU	XD	AY	VJ	PO
T	OLER	VPK	SHY	TW	AN	JFB	GX	UC	IQ	DM
U	APWR	FYM	SDQ	GB	VL	UEC	JO	NX	TH	IK
V	GHWP	MQX	OCY	DR	KE	LFB	AN	TJ	IU	SV
W	PFEY	QUR	WMC	AG	IS	JNK	BO	XT	DV	HL
X	IQBW	HDT	LCU	FA	ME	OJK	GP	XY	RS	VN
Y	UWQA	HSE	VPM	NI	OD	RXC	KJ	BY	TL	GF

NAVAIDS

Id	Name	Channel	Position	Elevation
DAN	Incirlik	21	N37 00.950 E035 26.883	243
AKR	Akrotiri	107	N34 34.765 E032 57.769	147
PHA	Paphos	79	N34 42.997 E032 28.963	35
RMD	Ramat David	84	N32 39.892 E035 11.265	136
OS66	Kuweires Military Aviation Institute	36	N36 11.362 E037 34.226	1200

**FOR DCS
 USE ONLY**

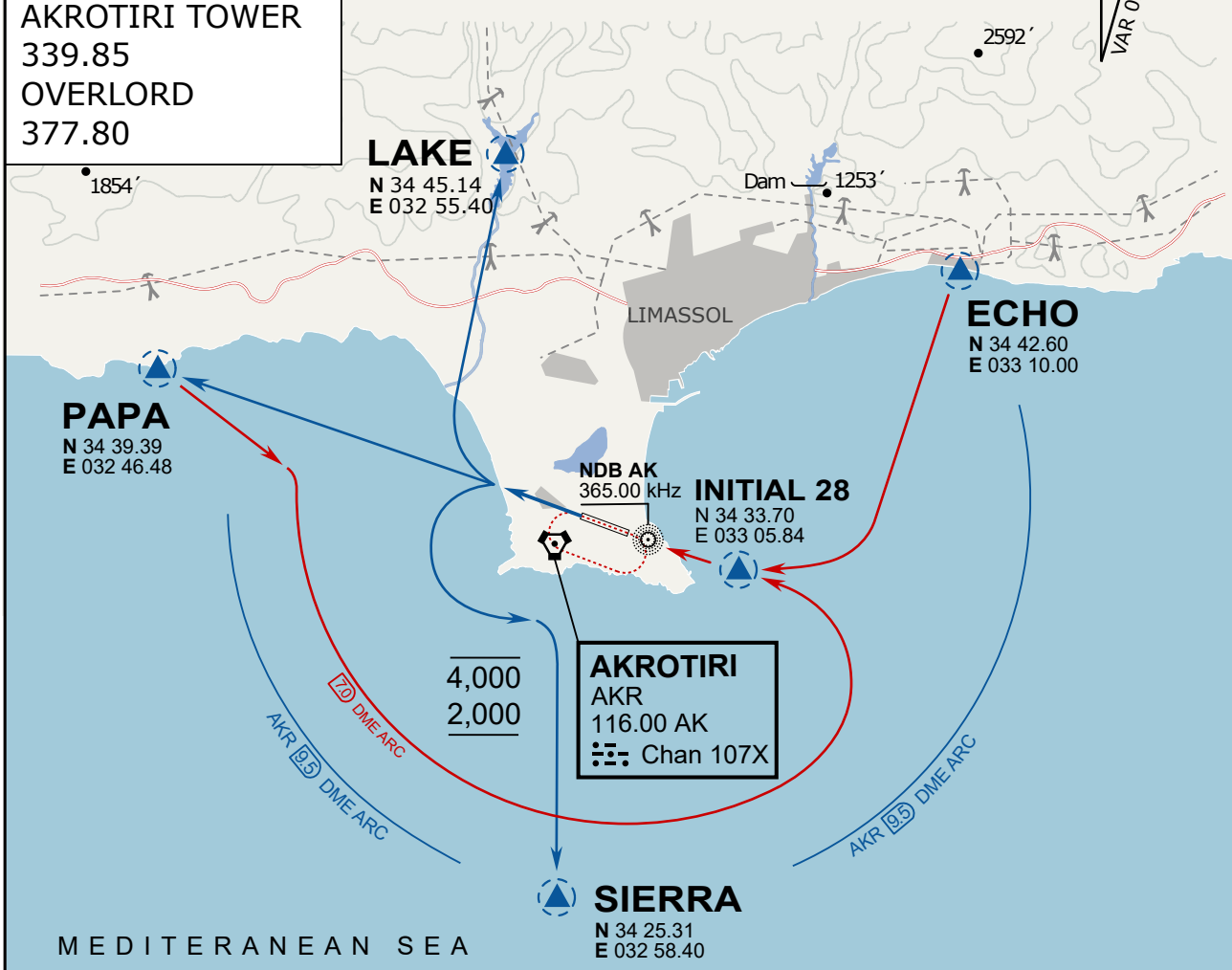


ATIS	AKROTIRI GND	AKROTIRI TWR	OVERLORD CONTROL	TACAN	FIELD ELEVATION
288.20 MHz	240.10 122.10	339.85 130.075	377.8	AKR 107X	75 [ft] 23 [m]

ATIS
 288.20
AKROTIRI GROUND
 240.10
AKROTIRI TOWER
 339.85
OVERLORD
 377.80

NOT FOR CIVIL USE

CAUTION: If unable to comply
 with restrictions advise ATC
 prior to departure.



ARR / DEP ROUTE DESCRIPTION

STRAIGHT-IN RWY28

Pass ENTRY at 5.000' MSL or below, pass INITIAL at 1.500' MSL or below.

OVERHEAD BREAK RWY28

Pass ENTRY at 5.000' MSL or below, pass INITIAL at 2.000' MSL, break to the south.

DEPARTURE GENERAL

Pass Departure end of runway at 1.000' or below.

DEP RWY28 PAPA: Fly straight ahead to exit.

DEP RWY28 LAKE: Fly straight ahead until coast, than right turn direct exit.

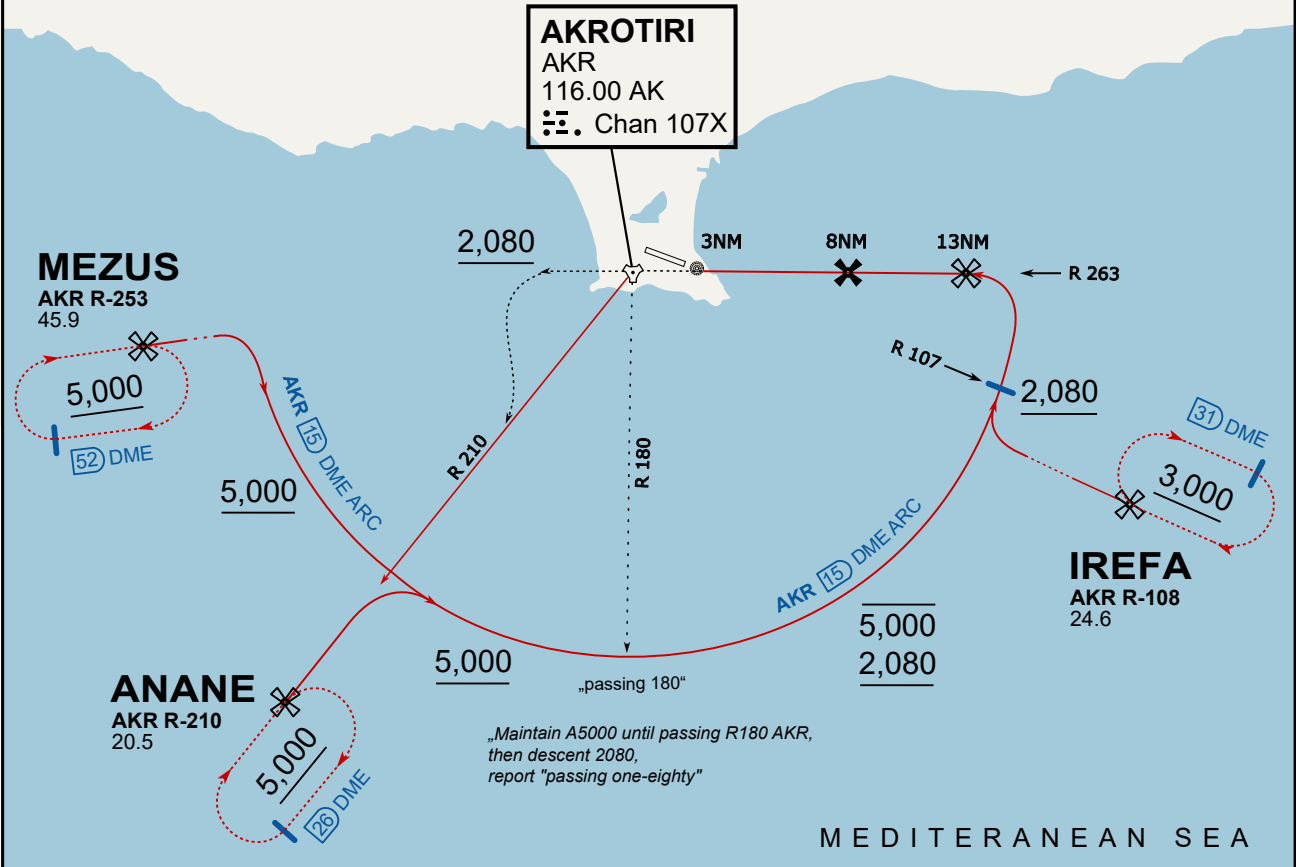
DEP RWY28 SIERRA: Fly straight ahead until coastline, then climbing left turn, intercept AKR R-180 to exit.

DEP ECHO: no exit.

ATIS
288.200
AKROTIRI GROUND
122.100
AKROTIRI TOWER
339.850
APP (OVERLORD)
377.800

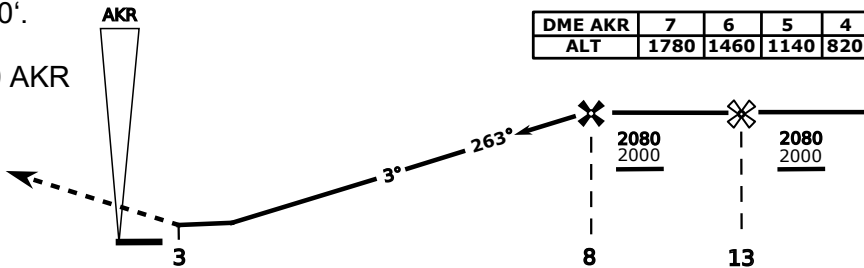
NOT FOR CIVIL USE

CAUTION: If unable to comply with restrictions advise ATC prior to departure.

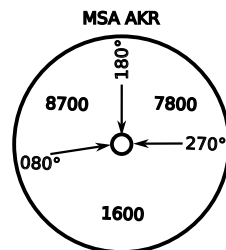


vJaBoG32 ETTR NAV CHART

On Track 263° climb A 4.000'.
passing 2.080' (2.000' AAL)
turn left and intercept R-210 AKR
to ANANE.
Enter ANANE Holding.



CAT	TAC	CIRCLE	GS (kts)	80	120	150	180	210
A	500(430)	680 (610) 2000m	FAF - MAPt (4.1NM)	3:06	2:03	1:38	1:22	1:10
B	1300m		RoD (fpm)	420	640	800	950	1110
C	780 (710)	780 (710) 3300m	- CIRCLING PROHIBITED N of Rwy - final track is offset 20° right of RCL and Intcp 1.1NM before THR - when established on final contact tower - Timing not Auth to define MAPt					
D	2600m	780 (710) 3600m						
E	1380 (1310)	1380 (1310) 5000m						
	5000m							



NOT AVAILABLE

NOT AVAILABLE