

MISSION DATA CARD

OPORD		Callsign		Mission		Date/Time		
2831/2024		Python* 1		Training		252015APR24		
Task						Freq		
AO						264.55		
Departure				Recovery				
CAT				CASE I				
#	Callsign		Pilot		IFF	TCN	LSR	NET
-1	Python* 1-1		Herby		3311	1Y	1681	

LOADOUT

A/A						GUN	
A/G						CHF	
POD						FLR	
TKS						FUEL	

TOLD

	Takeoff	Target	Joker	Bingo	Land
FUEL	7758				

AIRBASES

	Name	TCN	ATIS	GND	TWR	RWY	Elev	ILS
Dep	LHA-1 Tarawa	85X			302.0			
Arr	LHA-1 Tarawa	85X			302.0			
Div	Akrotiri AFB	107X	288.2	240.1	339.85	28	62	109.7

FLIGHTPLAN

#	Name	Navaid/Coords/DME	ALT	TOT
1	1	N34 24 E034 03	15000	
2	2	N36 52 60 E034 52	22000	
3	3	N36 01 54.371 E032 48 04.520	22000	
4	4	N35 04 16.513 E032 20 33.478	22000	
5	LHA-1 Tarawa	N34 22 40.265 E032 34 47.690	1500	
6	RAF Akrotiri	N34 35 26 E032 59 17	1500	

SUPPORT**Tanker**

Callsign	TCN	Freq	ALT	TAS
ARCO 2	41Y	360.8	FL220	400
	Pos	ARCO2: (N3653 E03452)		
TEXACO 2	44Y	244.78	FL150	250
	Pos	TEXACO2: (N3424 E03403)		

AWACS

Callsign	Freq	ALT	Pos
OVERLORD2	377.8	FL320	N3713 E03643 - N3714 E03749

OTHER FLIGHTS

Callsign	Mission	Airframe	Freq	TCN	Grpld	Laser
Tiger 1	Training	3x F/A-18C	261.15	1/64	1	155X
	AO	Akamas Bombing Range	Task	AG Bomb and AAR Training Night		
Outlaw 5	Training	4x AH-64D	133.5	1/64		171X
	AO	Akamas Bombing Range	Task	Bop-Up Attack		
Raptor 1	Training	4x F-16C	134.0	1/64		162X
	AO		Task			
Nazgul 6	Training	4x F-15E	262.45	1/64		156X
	AO	Sterile BVR	Task	BVR Training		
T-Rex 2	Training	4x A-10C	132.25	1/64	25	165X
	AO	Insurgent Town	Task	Night Attacks and AAR		
Monster 1	Training	4x A-10C	132.15	1/64	21	161X
	AO	Insurgent Town	Task	Night Attacks and AAR		

RADIO CHANNELS

#	Freq	Name
1		Flight/Squadron specific
2	288.2	Akrotiri ATIS
3	240.1	Akrotiri Ground
4	339.85	Aktrotiri Tower
5	335.05	Akrotiri Approach
6	360.1	Incirlik Tower
7	371.35	Incirlik Ground
8	377.475	Incirlik ATIS
9		No Preset
10	127.3	Paphos ATIS
11	353.8	Paphos Tower
12	304.0	CVN-73 George Washington
13	302.0	LHA-1 Tarawa
14	259.0	CV-59 Forrestal
15		No Preset
16	377.8	Overlord
17	265.0	KC-135 Texaco-1 medium/slow
18	319.8	KC-135 Arco-1
19	360.8	KC-135MPRS Arco-2
20	256.0	S-3B Recovery Tanker

RAMROD										
0	1	2	3	4	5	6	7	8	9	
P	H	I	L	A	N	D	E	R	S	
KTC 1400 C										
	0	1	2	3	4	5	6	7	8	9
A	WIRT	MLG	AED	KF	VH	OQU	BN	YC	SJ	XP
B	JGER	NHO	MYW	XU	CS	VTL	BP	ID	KQ	AF
C	IQVB	WSF	JXN	CU	RP	KAL	YH	DE	MG	OT
D	BUQN	CYV	RIO	PW	AE	JTD	MG	FL	HK	XS
E	SDAI	TNL	CWO	FB	KH	QYG	JX	PM	ER	VU
F	AJNG	PHT	ICY	QS	MO	BLU	WD	RX	VE	KF
G	BGDJ	HAC	FRX	EW	QP	VOU	TS	ML	IY	NK
H	SFNU	BPT	CHY	JW	KV	XLM	DG	RO	QE	IA
I	VOFN	CRI	HDB	GY	JE	PMK	SU	TL	AW	XQ
J	ECIH	NRY	UJM	WG	DX	TLP	BV	AK	SQ	OF
K	RJVL	MXO	WIH	BE	NC	GSP	UT	KY	AD	QF
L	IERY	MDO	BLA	TQ	KG	WHC	XP	JU	SF	VN
M	VUHE	PRY	NBC	SK	DA	JXG	ML	FO	QT	IW
N	CMFS	BLN	HOD	RG	WV	PEU	KX	QA	TJ	YI
O	QTJX	DHE	NRK	AW	LB	OSU	YG	VM	FP	CI
P	GKQX	LHP	IYU	FR	VB	EJM	CD	OS	TW	NA
Q	RMHW	FSO	KJV	YG	EB	TUC	PX	QD	AL	IN
R	IXNO	RLE	DKC	JM	TQ	VHW	SP	AB	GY	FU
S	TWHE	NQB	RSL	KM	FC	GIU	XD	AY	VJ	PO
T	OLER	VPK	SHY	TW	AN	JFB	GX	UC	IQ	DM
U	APWR	FYM	SDQ	GB	VL	UEC	JO	NX	TH	IK
V	GHWP	MQX	OCY	DR	KE	LFB	AN	TJ	IU	SV
W	PFEY	QUR	WMC	AG	IS	JNK	BO	XT	DV	HL
X	IQBW	HDT	LCU	FA	ME	OJK	GP	XY	RS	VN
Y	UWQA	HSE	VPM	NI	OD	RXC	KJ	BY	TL	GF

NAVAIDS

Id	Name	Channel	Position	Elevation
DAN	Incirlik	21	N37 00.950 E035 26.883	243
AKR	Akrotiri	107	N34 34.765 E032 57.769	147
PHA	Paphos	79	N34 42.997 E032 28.963	35
RMD	Ramat David	84	N32 39.892 E035 11.265	136
OS66	Kuweires Military Aviation Institute	36	N36 11.362 E037 34.226	1200



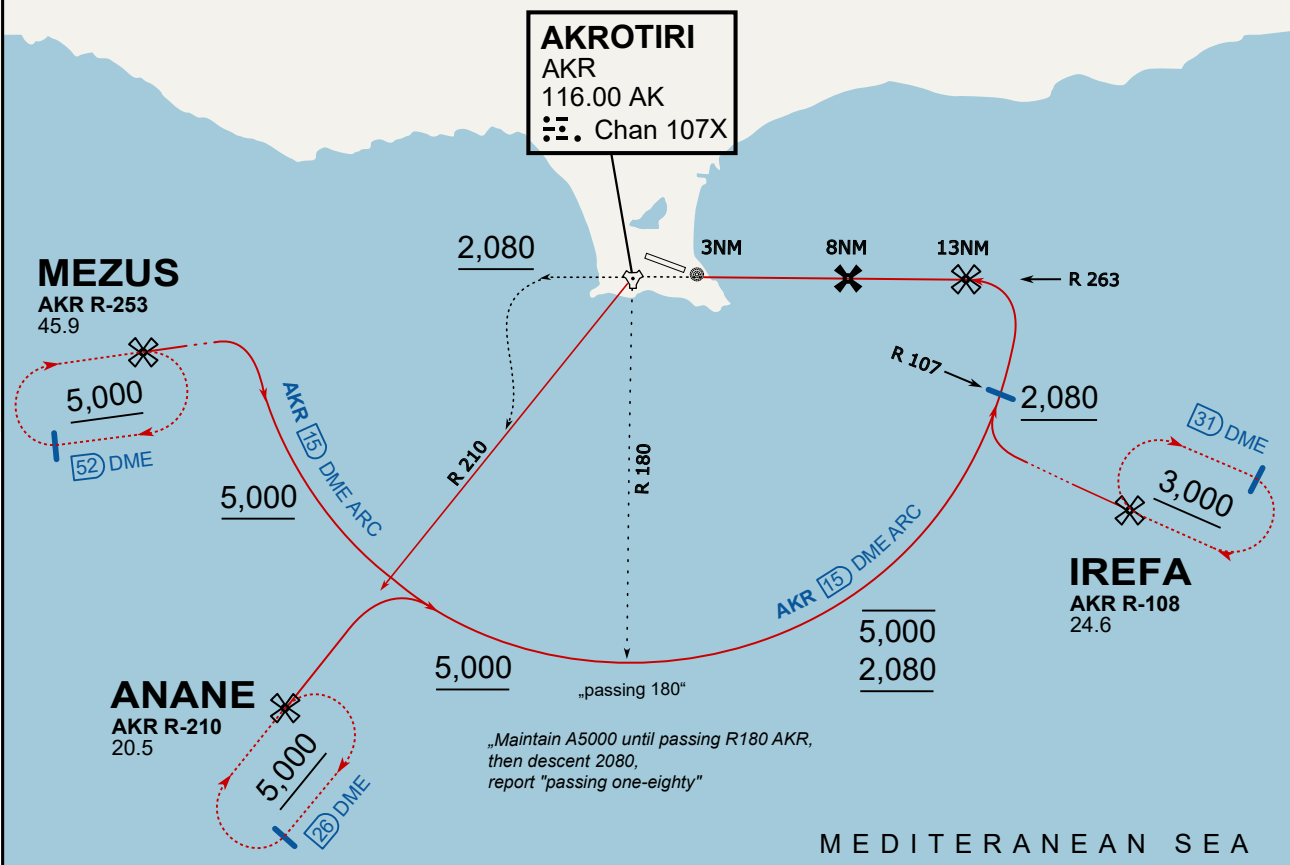




ATIS
 288.200
AKROTIRI GROUND
 122.100
AKROTIRI TOWER
 339.850
APP (OVERLORD)
 377.800

NOT FOR CIVIL USE

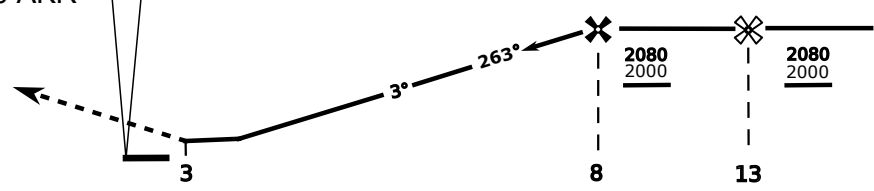
CAUTION: If unable to comply with restrictions advise ATC prior to departure.



On Track 263° climb A 4.000'.
 passing 2.080' (2.000' AAL)
 turn left and intercept R-210 AKR
 to ANANE.
 Enter ANANE Holding.

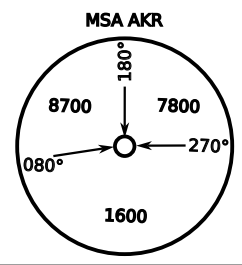


DME AKR	7	6	5	4
ALT	1780	1460	1140	820

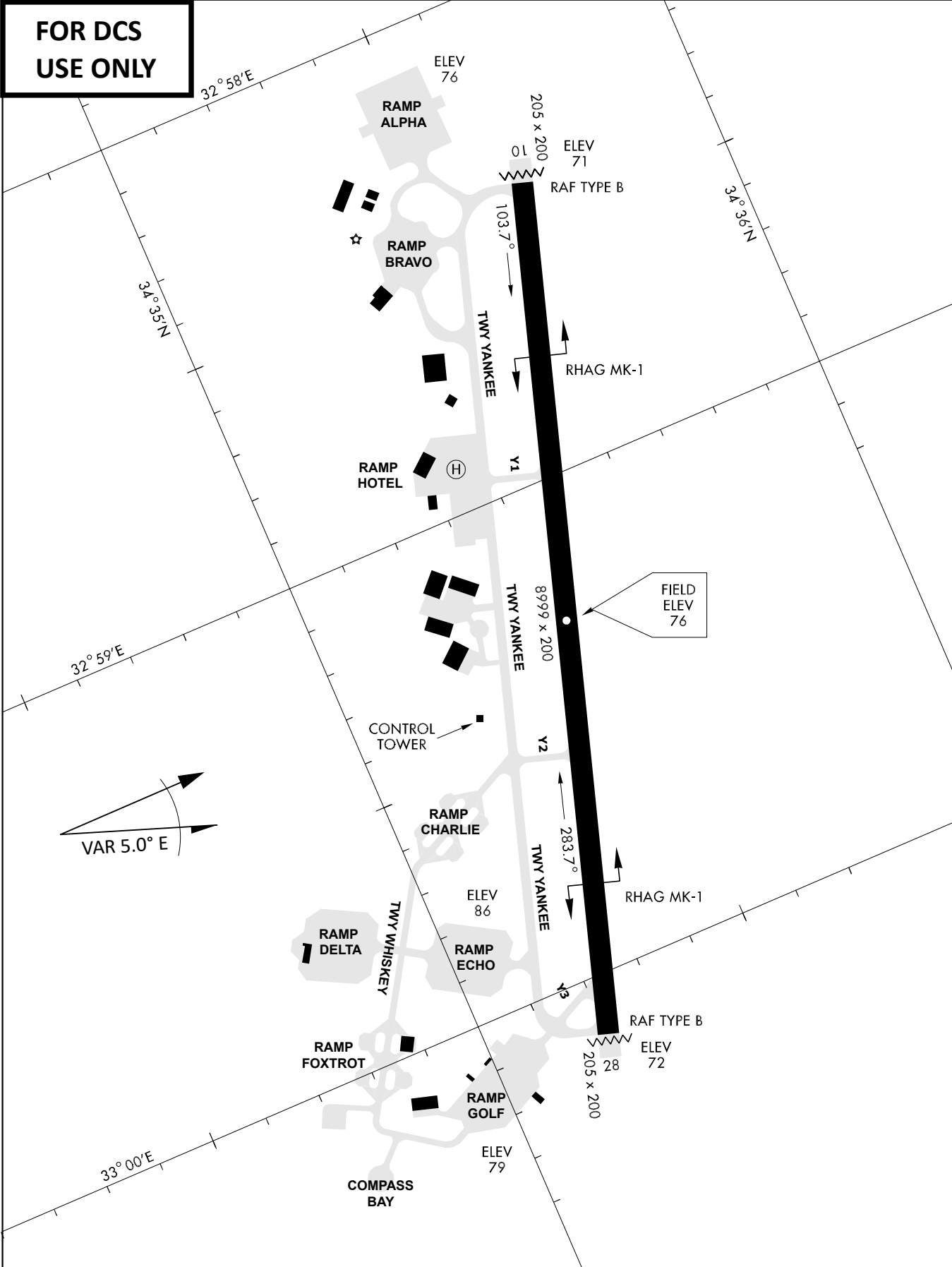


THR Elev 74ft DME AKR

CAT	TAC	CIRCLE	GS (kts)	80	120	150	180	210
A	500(430)	N/A	680 (610) 2000m	FAF - MAPt (4.1NM)				
B	1300m			3:06	2:03	1:38	1:22	1:10
C	780 (710) 2600m		780 (710) 3300m	- CIRCLING PROHIBITED N of Rwy				
D			780 (710) 3600m	- final track is offset 20° right of RCL and Intcp 1.1NM before THR				
E			1380 (1310) 5000m	1380 (1310) 5000m	- when established on final contact tower			
			- Timing not Auth to define MAPt					



**FOR DCS
 USE ONLY**



ATIS	AKROTIRI GND	AKROTIRI TWR	OVERLORD CONTROL	TACAN	FIELD ELEVATION
288.20 MHz	240.10 122.10	339.85 130.075	377.8	AKR 107X	75 [ft] 23 [m]