

MISSION DATA CARD

OPORD		Callsign		Mission		Date/Time		
2829/2024		Monster 1		Training		222000APR24		
Task	IFR-Route					Freq		
AO	Akrotiri - Paphos					132.15		
Departure				Recovery				
RWY28 SID				ILS 28				
#	Callsign		Pilot		IFF	TCN	LSR	NET
-1	Monster 1-1		Marsy		1411	1Y	1611	21/01
-2	Monster 1-2		Lenzi		1412	64Y	1612	21/02

LOADOUT

A/A	A9M				GUN	100% CM	
A/G	7M282L				CHF	240	
POD	A184, TGP				FLR	240	
TKS					FUEL	100%	

TOLD

	Takeoff	Target	Joker	Bingo	Land
FUEL	11087				

AIRBASES

	Name	TCN	ATIS	GND	TWR	RWY	Elev	ILS
Dep	Akrotiri AFB	107X	288.2	240.1	339.85	28	62	109.7
Arr	Akrotiri AFB	107X	288.2	240.1	339.85	28	62	109.7
Div	Paphos Internationl	79X	127.3		353.8	29	40	108.9

COMMS

Radio	Usage
1	132.15
2	2 - 4 - 10 - 11 - 2 - 4 - 10 - 11 - 2 - 4
3	32.00

NOTES

AKROTIRI 107X ILS 109,7
PAPHOS 79X ILS 108,9

Route

AKROTIRI departure via EAST-SID-3 (SID28) to IREFA (7'000ft)
turn left HDG320 and intercept NORDI (PAPHOS-STAR)

PAPHOS-STAR until Holding
approach via PAPHOS ILS29

fly missed approach procedure to ESERI

turn left HDG120 and intercept ANANE (AKROTIRI ILS28)

approach via AKROTIRI ILS28

Touch&Go

departure via WEST-SID-2 (SID28) to ANANE (max 4'000ft)

turn right HDG010 and intercept DIPOS (PAPHOS-STAR)

PAPHOS-STAR until Holding

approach via PAPHOS ILS29

Touch&Go

departure via GIPRO 1D (SID29) to GIPRO

turn right HDG140 and intercept IREFA (AKROTIRI ILS28)

approach via AKROTIRI ILS28

full stop

OTHER FLIGHTS

Callsign	Mission	Airframe	Freq	TCN	Grpld	Laser
T-Rex 2	Training	4x A-10C	132.25	1/64	25	165X
AO	Akrotiri - Paphos	Task	IFR-Route			
Edelweiss 1	Training	3x F/A-18C	264.15	1/64		171X
AO		Task				

RADIO CHANNELS

#	Freq	Name
1		Flight/Squadron specific
2	288.2	Akrotiri ATIS
3	240.1	Akrotiri Ground
4	339.85	Aktrotiri Tower
5	335.05	Akrotiri Approach
6	360.1	Incirlik Tower
7	371.35	Incirlik Ground
8	377.475	Incirlik ATIS
9		No Preset
10	127.3	Paphos ATIS
11	353.8	Paphos Tower
12	304.0	CVN-73 George Washington
13	302.0	LHA-1 Tarawa
14	259.0	CV-59 Forrestal
15		No Preset
16	377.8	Overlord
17	265.0	KC-135 Texaco-1 medium/slow
18	319.8	KC-135 Arco-1
19	360.8	KC-135MPRS Arco-2
20	256.0	S-3B Recovery Tanker

RAMROD

0	1	2	3	4	5	6	7	8	9
R	H	A	P	S	O	D	I	Z	E

KTC 1400 C

	0	1	2	3	4	5	6	7	8	9
A	GCEL	NUK	XSR	TP	VJ	DOH	QI	WF	MY	BA
B	QJTY	SKC	WEM	OA	RF	NUD	BG	VH	XP	IL
C	RXLH	PWC	OFS	KN	TQ	EUM	IJ	AG	BV	YD
D	EHFT	XWN	BAL	QJ	MV	SUC	GI	RP	YK	OD
E	JTLS	VKE	YDA	CF	QX	BUP	OR	GH	WM	IN
F	NWLB	XVC	SEA	RG	OJ	HYI	QT	DM	FP	UK
G	OAXL	QIH	PJM	NE	TU	RWG	BY	VF	DK	CS
H	SLYN	HRQ	VBD	XK	TE	OGP	WC	JM	UA	FI
I	MPFN	HQE	KLC	VW	JU	OYI	XD	GR	AS	TB
J	VKEP	QSC	WOB	YH	RU	TXN	FL	DI	AM	JG
K	JOQW	XCV	KFR	AN	YU	DSL	EP	TB	MH	GI
L	BFWQ	CGJ	RTX	KE	OL	MSU	HV	PY	NA	ID
M	QSDL	YMV	PKE	OF	HC	GTA	UW	IR	XN	JB
N	VIHF	TBO	XRQ	ES	LN	JDG	UP	MY	KC	AW
O	XUDN	EMI	KJF	SQ	AR	TLV	CO	YW	BP	GH
P	PQDN	HIV	KYF	BS	MA	RWT	EJ	UC	LG	OX
Q	CATY	IEK	SNF	PX	GV	HOU	WR	DL	BM	QJ
R	FGUH	LCB	IMN	RD	XQ	EPJ	SK	OW	TV	YA
S	RPUT	BSJ	QWG	XE	HM	VAC	NI	OK	LD	YF
T	KCQH	JXB	UON	IE	AG	WPS	DV	MF	LR	TY
U	MUNL	ADB	EXV	IJ	QC	GSW	RT	KP	OF	YH
V	RGQF	WYA	UIK	SV	EC	BTX	MO	HN	LP	DJ
W	PAXL	DHO	NJS	WC	YK	MUI	VQ	GE	TF	BR
X	GXJV	SKD	QRP	CL	UY	INT	WH	EF	MA	OB
Y	HRXT	VNW	QBO	YL	SJ	MUG	AP	ID	FK	EC

NAVAIDS

Id	Name	Channel	Position	Elevation
DAN	Incirlik	21	N37 00.950 E035 26.883	243
AKR	Akrotiri	107	N34 34.765 E032 57.769	147
PHA	Paphos	79	N34 42.997 E032 28.963	35
RMD	Ramat David	84	N32 39.892 E035 11.265	136
OS66	Kuweires Military Aviation Institute	36	N36 11.362 E037 34.226	1200

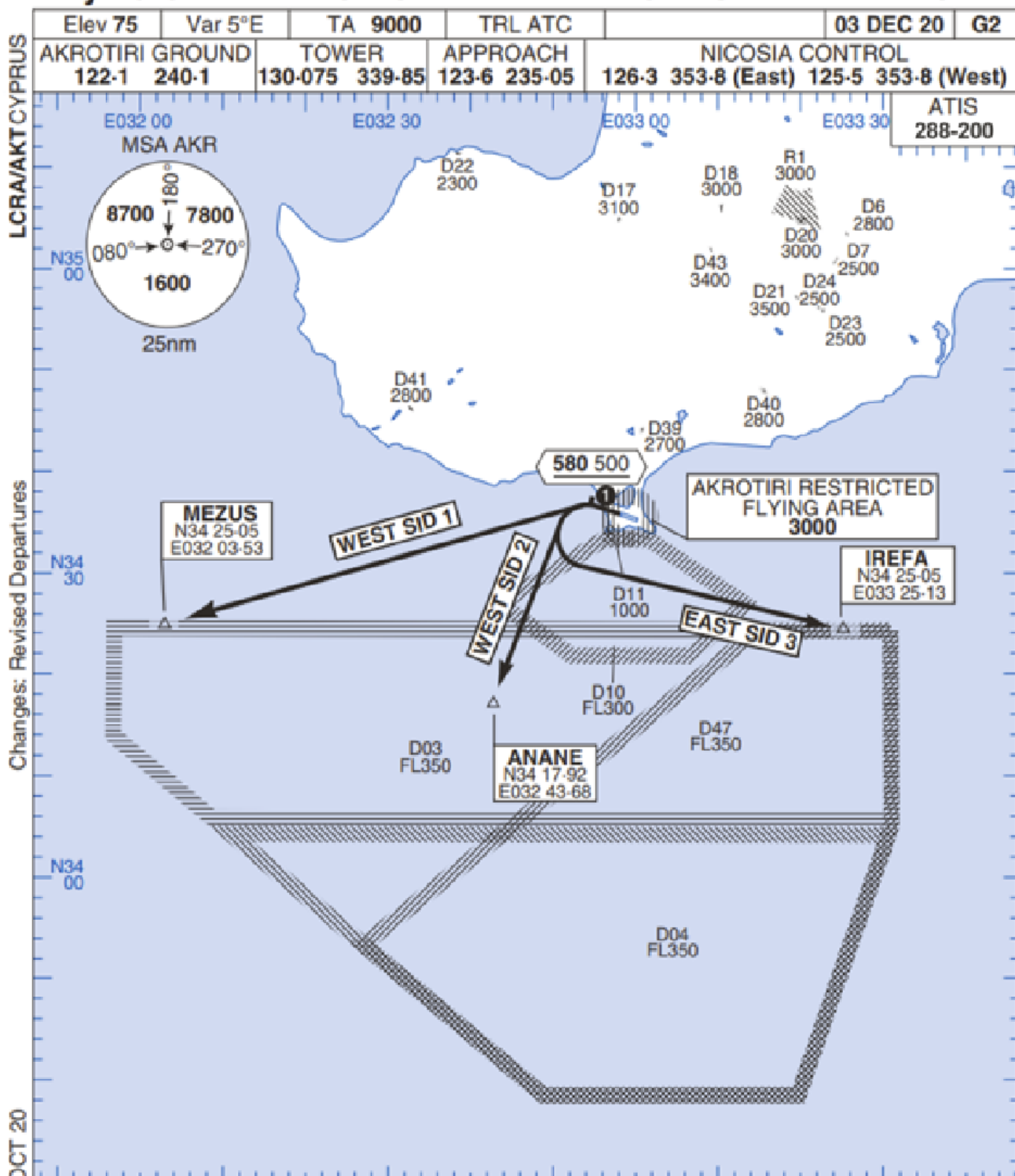
**FOR DCS
 USE ONLY**



ATIS	AKROTIRI GND	AKROTIRI TWR	OVERLORD CONTROL	TACAN	FIELD ELEVATION
288.20 MHz	240.10 122.10	339.85 130.075	377.8	AKR 107X	75 [ft] 23 [m]

Rwy 28 OMNIDIRECTIONAL DEPARTURES

AKROTIRI



Changes: Revised Departures

No1 AIDU Last Amended 06 OCT 20

© UK MOD Crown Copyright 2020. No1 AIDU is not responsible for, and claims no right to, the content or accuracy of 3rd party documents/information.

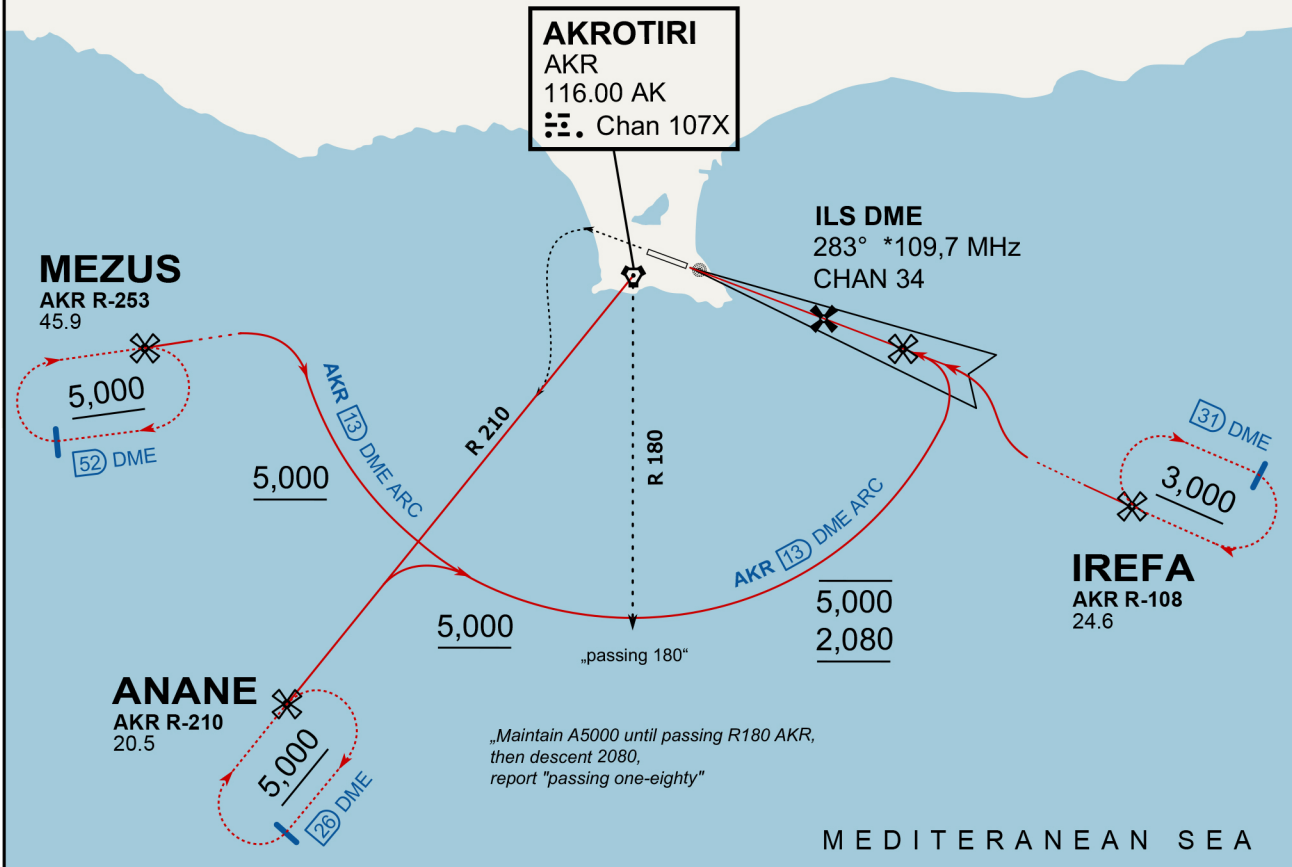
- 1. Minimum climb gradient 7% to 580 500 for obstacle and operational purposes.
- 2. No turns before DER.
- 3. Turns to north of Rwy prohibited.
- 4. Aclt unable to locate MEZUS/ANANE/IREFA should request radar vectors from ATC.

SID	RWY	ROUTEING (Including Mnm Noise Routes)
WEST SID 1	28 283°M	Ahead on Rwy Tr to 580 500, turn left direct to MEZUS. SID terminates at 9000.
WEST SID 2		Ahead on Rwy Tr to 580 500, turn left direct to ANANE. SID terminates at 9000.
EAST SID 3		Ahead on Rwy Tr to 580 500, turn left direct to IREFA. SID terminates at 9000.

ATIS
288.200
AKROTIRI GROUND
122.100
AKROTIRI TOWER
339.850
APP (OVERLORD)
377.800

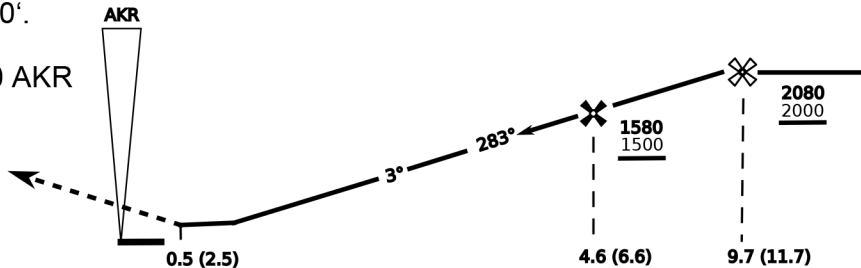
NOT FOR CIVIL USE

CAUTION: If unable to comply with restrictions advise ATC prior to departure.



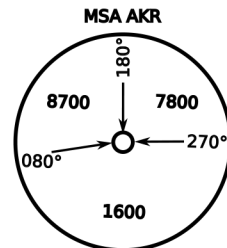
vJaBoG32 ETTR NAV CHART

On Track 283° climb A 4.000'.
passing 2.080' (2.000' AAL)
turn left and intercept R-210 AKR
to ANANE.
Enter ANANE Holding.



THR Elev 74ft DME I-AK (DME AKR)

CAT	ILS/DME	LOC/DME	CIRCLE	GS (kts)				
				80	120	150	180	210
A	280 (200)	390 (320) 800m	680 (610) 1500m	FAF - MAPt (4.1NM) 3:06 2:03 1:38 1:22 1:10				
B	800m		680 (610) 1600m	RoD (fpm) 420 640 800 950 1110				
C	290 (210) 800m		780 (710) 2400m	- CIRCLING PROHIBITED N of Rwy - no AUTO coupled ILS approaches - when established on ILS contact Tower - Timing not Auth to define MAPt				
D	310 (230) 800m		780 (710) 3600m					
E	340 (260) 800m		1380 (1310) 3600m					



NOT AVAILABLE

NOT AVAILABLE