

**MISSION DATA CARD**

OPORD		Callsign		Mission		Date/Time		
2827/2024		Monster 1		Training		182029APR24		
Task	IFR-Route					Freq		
AO	Akrotiri - Paphos					132.15		
Departure				Recovery				
RWY28 SID				ILS 28				
#	Callsign		Pilot		IFF	TCN	LSR	NET
-1	Monster 1-1		G-Rex		1411	1Y	1611	21/01

**LOADOUT**

A/A	A9M				GUN	100% CM	
A/G	7M282L				CHF	240	
POD	A184, TGP				FLR	240	
TKS					FUEL	100%	

**TOLD**

	Takeoff	Target	Joker	Bingo	Land
FUEL	11087				

**AIRBASES**

	Name	TCN	ATIS	GND	TWR	RWY	Elev	ILS
Dep	Akrotiri AFB	107X	288.2	240.1	339.85	28	62	109.7
Arr	Akrotiri AFB	107X	288.2	240.1	339.85	28	62	109.7
Div	Paphos Internationl	79X	127.3		353.8	29	40	108.9

**COMMS**

Radio	Usage
1	132.15
2	2 - 4 - 10 - 11 - 2 - 4 - 10 - 11 - 2 - 4
3	32.00

## NOTES

AKROTIRI 107X ILS 109,7  
PAPHOS 79X ILS 108,9

### Route

AKROTIRI departure via EAST-SID-3 (SID28) to IREFA (7'000ft)  
turn left and intercept NORDI (PAPHOS-STAR)

PAPHOS-STAR until Holding

approach via PAPHOS ILS29

fly missed approach procedure to ESERI

turn left and intercept ANANE (AKROTIRI ILS28)

approach via AKROTIRI ILS28

Touch&Go

departure via WEST-SID-2 (SID28) to ANANE (max 4'000ft)

turn right and intercept DIPOS (PAPHOS-STAR)

PAPHOS-STAR until Holding

approach via PAPHOS ILS29

Touch&Go

departure via GIPRO 1D (SID29) to GIPRO

turn right and intercept IREFA (AKROTIRI ILS28)

approach via AKROTIRI ILS28

full stop

## OTHER FLIGHTS

Callsign	Mission	Airframe	Freq	TCN	Grpld	Laser
Tiger 1	Training	2x F/A-18C	261.15	1/64		155X
AO	Cape Pyla Bombing Range	Task	Training HADB			
Beast 3	Training	4x AH-64D	133.5	1/64		161X
AO		Task	Longbow Net und FCR			
T-Rex 2	Training	4x A-10C	132.25	1/64	25	165X
AO	NICOSIA CAS TRAINING AREA	Task	Training MAV GBU			

**RADIO CHANNELS**

#	Freq	Name
1		Flight/Squadron specific
2	288.2	Akrotiri ATIS
3	240.1	Akrotiri Ground
4	339.85	Aktrotiri Tower
5	335.05	Akrotiri Approach
6	360.1	Incirlik Tower
7	371.35	Incirlik Ground
8	377.475	Incirlik ATIS
9		No Preset
10	127.3	Paphos ATIS
11	353.8	Paphos Tower
12	304.0	CVN-73 George Washington
13	302.0	LHA-1 Tarawa
14	259.0	CV-59 Forrestal
15		No Preset
16	377.8	Overlord
17	265.0	KC-135 Texaco-1 medium/slow
18	319.8	KC-135 Arco-1
19	360.8	KC-135MPRS Arco-2
20	256.0	S-3B Recovery Tanker

**RAMROD**

0	1	2	3	4	5	6	7	8	9
B	L	U	S	T	E	R	I	N	G

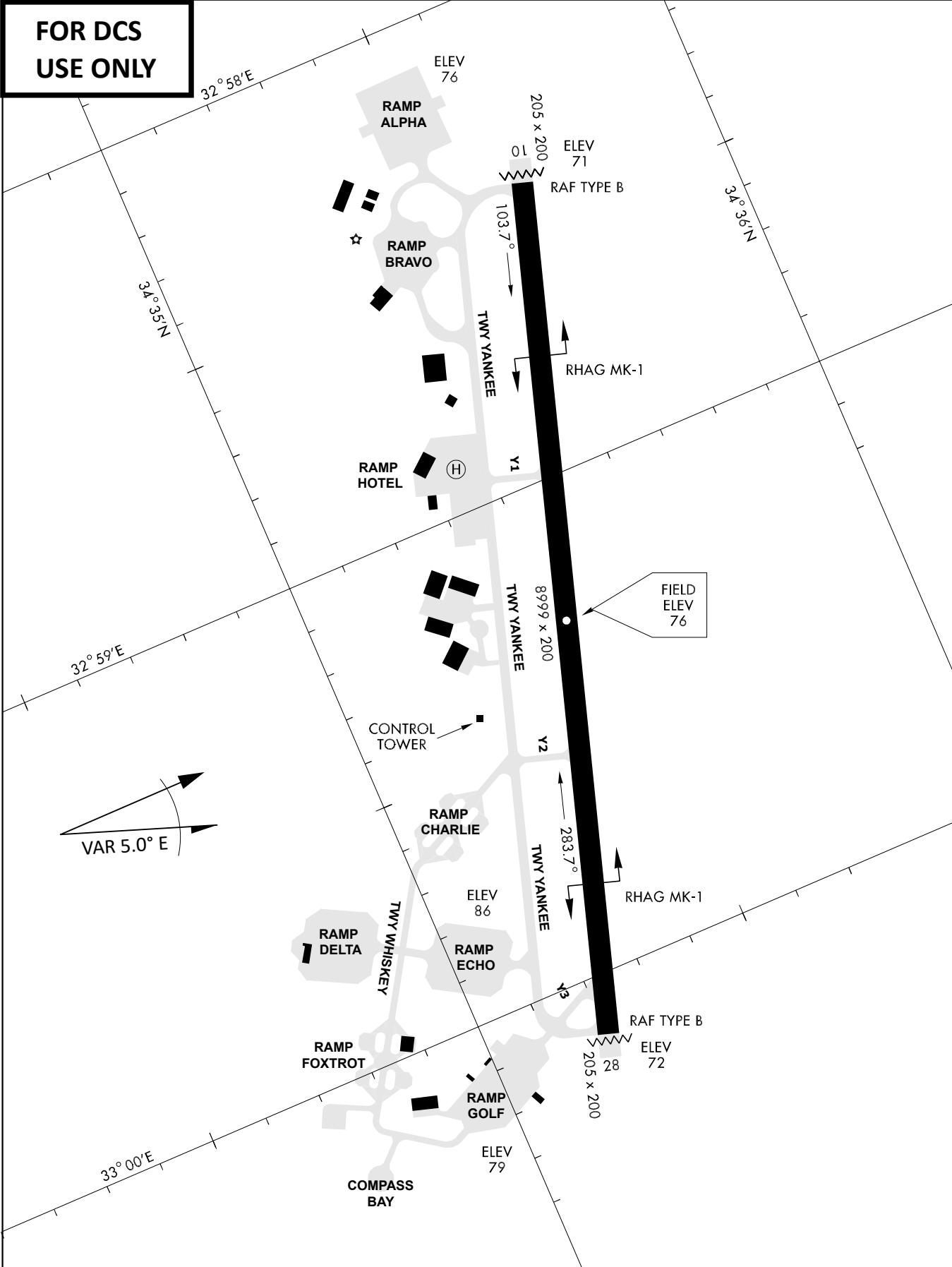
**KTC 1400 C**

	0	1	2	3	4	5	6	7	8	9
A	QEKJ	DOX	HUB	VR	PS	LWF	MN	TG	IA	YC
B	QRXH	JYK	IMD	OP	LC	EFV	GW	BS	TU	AN
C	UARE	JTB	FCX	NM	DY	KSP	OI	VW	HQ	GL
D	WYOQ	MFJ	EAN	GB	VL	PRX	IT	SK	DU	CH
E	VBSY	MIN	CRO	QD	EP	HUT	WK	JF	LA	GX
F	MCHK	ANI	XTP	EW	VL	UDG	QB	JO	YR	SF
G	VSMJ	RNE	QHK	LC	BA	FIO	PT	WG	YX	DU
H	ISHF	GXR	QCT	AD	MY	PBL	KJ	EU	NO	WV
I	ECPT	XHW	BQY	NF	RU	DLS	VK	IM	GJ	AO
J	IYNL	CHW	SJP	DV	BO	XTF	RG	AK	UE	QM
K	LVOU	FJH	WTK	AX	IB	QEG	NP	RS	DC	YM
L	OQCL	PTD	SNR	MF	IH	WYK	UG	JE	XV	AB
M	IMXV	EYG	QHR	WK	OB	PJU	ST	AD	LN	FC
N	CHIB	PWJ	VYK	EA	OX	RFM	UQ	NG	TD	SL
O	UCDG	QEN	VRX	BP	OK	TSA	JI	WH	FY	LM
P	UXGN	ERF	CIW	LQ	YO	APK	BJ	DT	HS	MV
Q	DMYX	RTF	woQ	SE	CK	VAJ	HN	BP	IU	LG
R	UQMA	WKJ	CLS	EH	TB	DVN	FO	RG	XI	PY
S	APDS	HWK	UTY	MB	IL	NVR	FG	QE	XJ	CO
T	UHFR	GXV	AQY	JN	SD	PKE	WM	BL	TC	IO
U	TUWM	JYO	DLB	PX	EF	AKV	CG	HS	NQ	IR
V	GXQP	HSA	JCL	YF	EV	UNO	RT	WB	KI	MD
W	QTEP	YXV	MRL	GS	UA	KIH	CB	OF	WJ	ND
X	CPML	WBD	JFR	KV	YG	QHI	NS	AE	UX	TO
Y	IAEJ	GBY	MVF	OD	KR	TCP	UH	QX	WS	LN

**NAVAIDS**

<b>Id</b>	<b>Name</b>	<b>Channel</b>	<b>Position</b>	<b>Elevation</b>
DAN	Incirlik	21	N37 00.950 E035 26.883	243
AKR	Akrotiri	107	N34 34.765 E032 57.769	147
PHA	Paphos	79	N34 42.997 E032 28.963	35
RMD	Ramat David	84	N32 39.892 E035 11.265	136
OS66	Kuweires Military Aviation Institute	36	N36 11.362 E037 34.226	1200

**FOR DCS  
 USE ONLY**

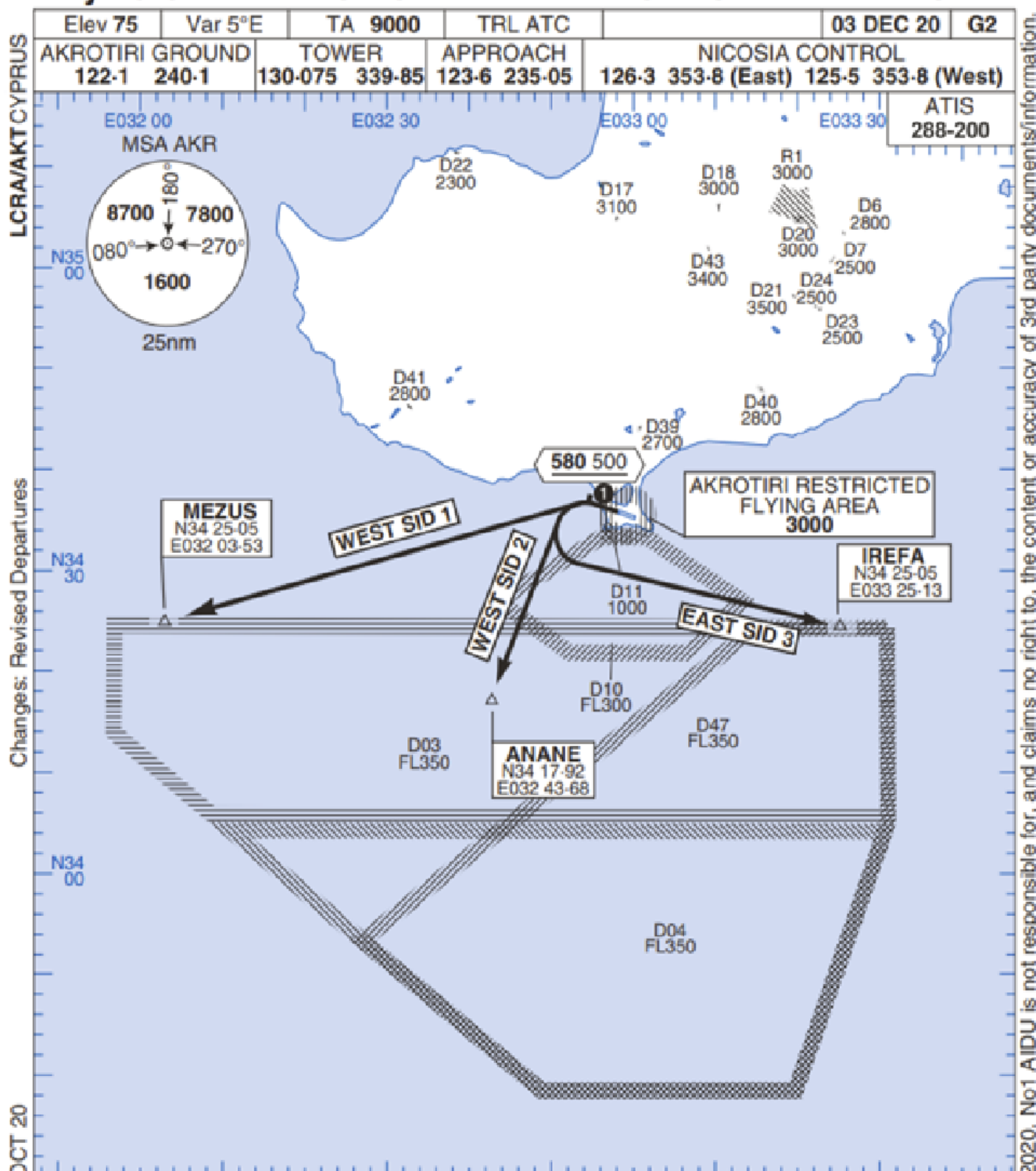


ATIS	AKROTIRI GND	AKROTIRI TWR	OVERLORD CONTROL	TACAN	FIELD ELEVATION
288.20 MHz	240.10   122.10	339.85   130.075	377.8	AKR 107X	<b>75 [ft] 23 [m]</b>



# Rwy 28 OMNIDIRECTIONAL DEPARTURES

# AKROTIRI



Changes: Revised Departures

No1 AIDU Last Amended 06 OCT 20

© UK MOD Crown Copyright 2020. No1 AIDU is not responsible for, and claims no right to, the content or accuracy of 3rd party documents/information.

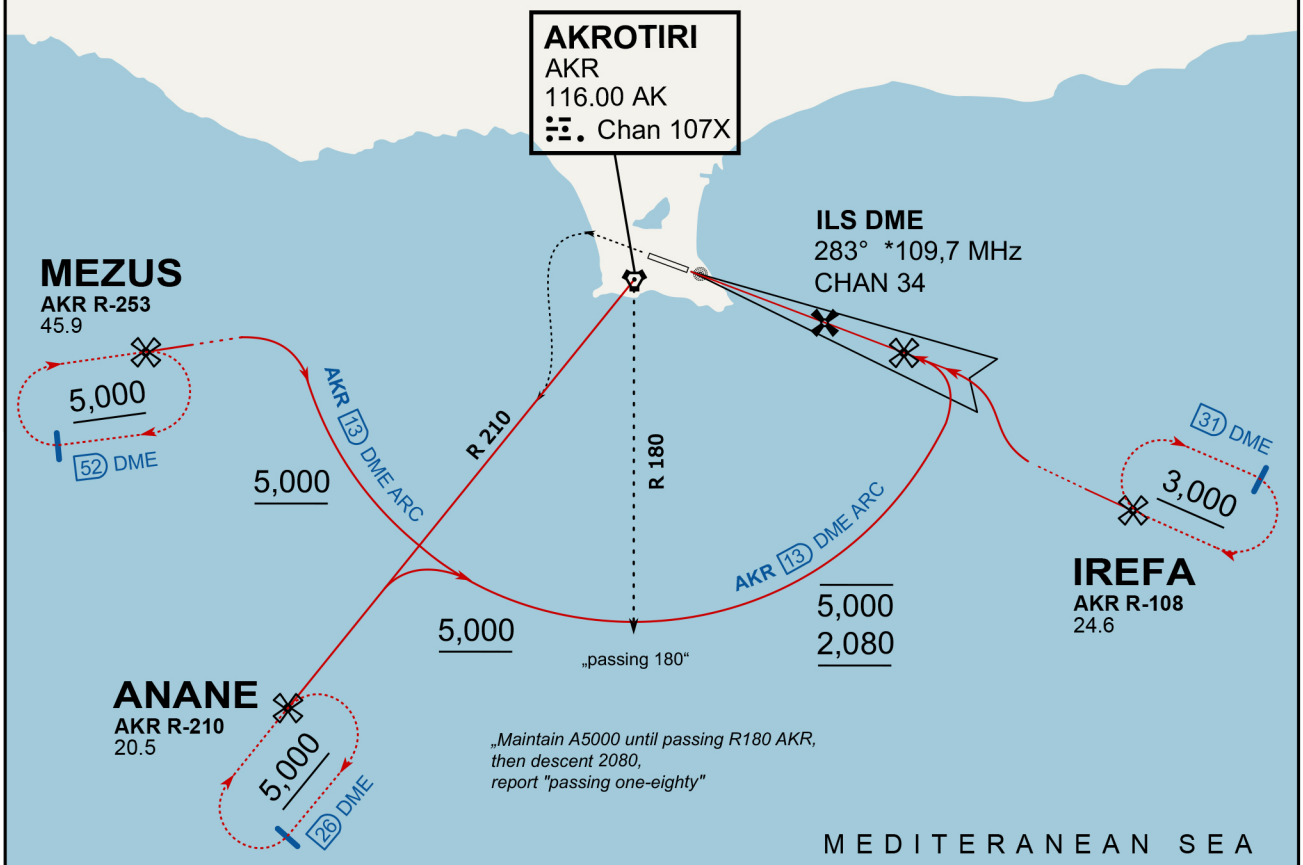
- 1. Minimum climb gradient 7% to 580 500 for obstacle and operational purposes.
- 2. No turns before DER.
- 3. Turns to north of Rwy prohibited.
- 4. Acft unable to locate MEZUS/ANANE/IREFA should request radar vectors from ATC.

SID	RWY	ROUTEING (Including Mnm Noise Routes)
WEST SID 1	28 283°M	Ahead on Rwy Tr to 580 500, turn left direct to MEZUS. SID terminates at 9000.
WEST SID 2		Ahead on Rwy Tr to 580 500, turn left direct to ANANE. SID terminates at 9000.
EAST SID 3		Ahead on Rwy Tr to 580 500, turn left direct to IREFA. SID terminates at 9000.

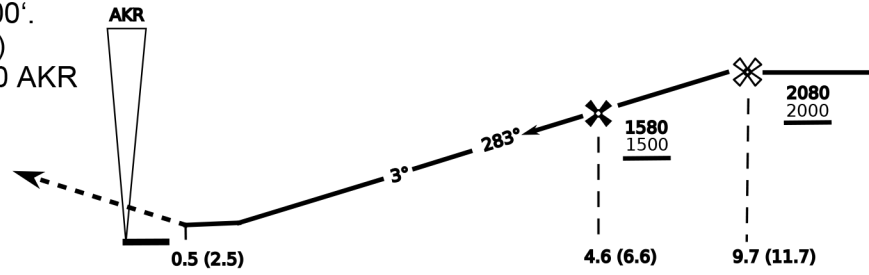
ATIS  
288.200  
AKROTIRI GROUND  
122.100  
AKROTIRI TOWER  
339.850  
APP (OVERLORD)  
377.800

NOT FOR CIVIL USE

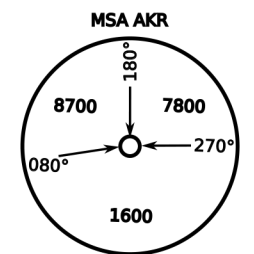
CAUTION: If unable to comply with restrictions advise ATC prior to departure.



On Track 283° climb A 4.000'.  
passing 2.080' (2.000' AAL)  
turn left and intercept R-210 AKR  
to ANANE.  
Enter ANANE Holding.



CAT	ILS/DME	LOC/DME	CIRCLE	GS (kts)				
				80	120	150	180	210
A	280 (200)	390 (320) 800m	680 (610) 1500m	FAF - MAPt (4.1NM)				
B	800m		680 (610) 1600m	3:06	2:03	1:38	1:22	1:10
C	290 (210) 800m		780 (710) 2400m	RoD (fpm)				
D	310 (230) 800m		780 (710) 3600m	420	640	800	950	1110
E	340 (260) 800m		1380 (1310) 3600m	- CIRCLING PROHIBITED N of Rwy - no AUTO coupled ILS approaches - when established on ILS contact Tower - Timing not Auth to define MAPt				



**NOT AVAILABLE**

**NOT AVAILABLE**