

MISSION DATA CARD

OPORD	Callsign	Mission	Date/Time			
2826/2024	T-Rex 2	Training	182030APR24			
Task	Training MAV GBU					Freq
AO	NICOSIA CAS TRAINING AREA					132.25
Departure			Recovery			
RWY28 VFR			RWY10 VFR			
#	Callsign	Pilot	IFF	TCN	LSR	NET
-1	T-Rex 2-1	Crusader	1521	1Y	1651	25/01
-2	T-Rex 2-2	Stoner	1522	64Y	1652	25/02
-3	T-Rex 2-3	Toolface	1523	64X	1653	25/03
-4	T-Rex 2-4	Lenzi	1524	1X	1654	25/04

LOADOUT

A/A	A9M	GUN	100% CM
A/G	7M282L, 2xA65D, 2xG12, 3xM82	CHF	120
POD	A184, TGP	FLR	360
TKS		FUEL	79%

TOLD

	Takeoff	Target	Joker	Bingo	Land
FUEL	8758				

AIRBASES

	Name	TCN	ATIS	GND	TWR	RWY	Elev	ILS
Dep	Akrotiri AFB	107X	288.2	240.1	339.85	28	62	109.7
Arr	Akrotiri AFB	107X	288.2	240.1	339.85	28	62	109.7

FLIGHTPLAN

#	Name	Navaid/Coords/DME	ALT	TOT
1	ECHO	N34 42.600 E033 10		
2	PAPA	N34 39.390 E032 46.480		
3	CTR.T1	N35 09.457 E033 16.244		
4	LAKE	N34 45.150 E032 55.400		

COMMS

Radio	Usage
1	132.25
2	2 - 4 - 16 - 2 - 4
3	32.00

OTHER FLIGHTS

Callsign	Mission	Airframe	Freq	TCN	Grpld	Laser
Tiger 1	Training	2x F/A-18C	261.15	1/64		155X
AO	Cape Pyla Bombing Range	Task	Training HADB			
Beast 3	Training	4x AH-64D	133.5	1/64		161X
AO		Task	Longbow Net und FCR			
Monster 1	Training	1x A-10C	132.15	1/64	21	161X
AO	Akrotiri - Paphos	Task	IFR-Route			

RADIO CHANNELS

#	Freq	Name
1		Flight/Squadron specific
2	288.2	Akrotiri ATIS
3	240.1	Akrotiri Ground
4	339.85	Aktrotiri Tower
5	335.05	Akrotiri Approach
6	360.1	Incirlik Tower
7	371.35	Incirlik Ground
8	377.475	Incirlik ATIS
9		No Preset
10	127.3	Paphos ATIS
11	353.8	Paphos Tower
12	304.0	CVN-73 George Washington
13	302.0	LHA-1 Tarawa
14	259.0	CV-59 Forrestal
15		No Preset
16	377.8	Overlord
17	265.0	KC-135 Texaco-1 medium/slow
18	319.8	KC-135 Arco-1
19	360.8	KC-135MPRS Arco-2
20	256.0	S-3B Recovery Tanker

RAMROD

0	1	2	3	4	5	6	7	8	9
B	L	U	S	T	E	R	I	N	G

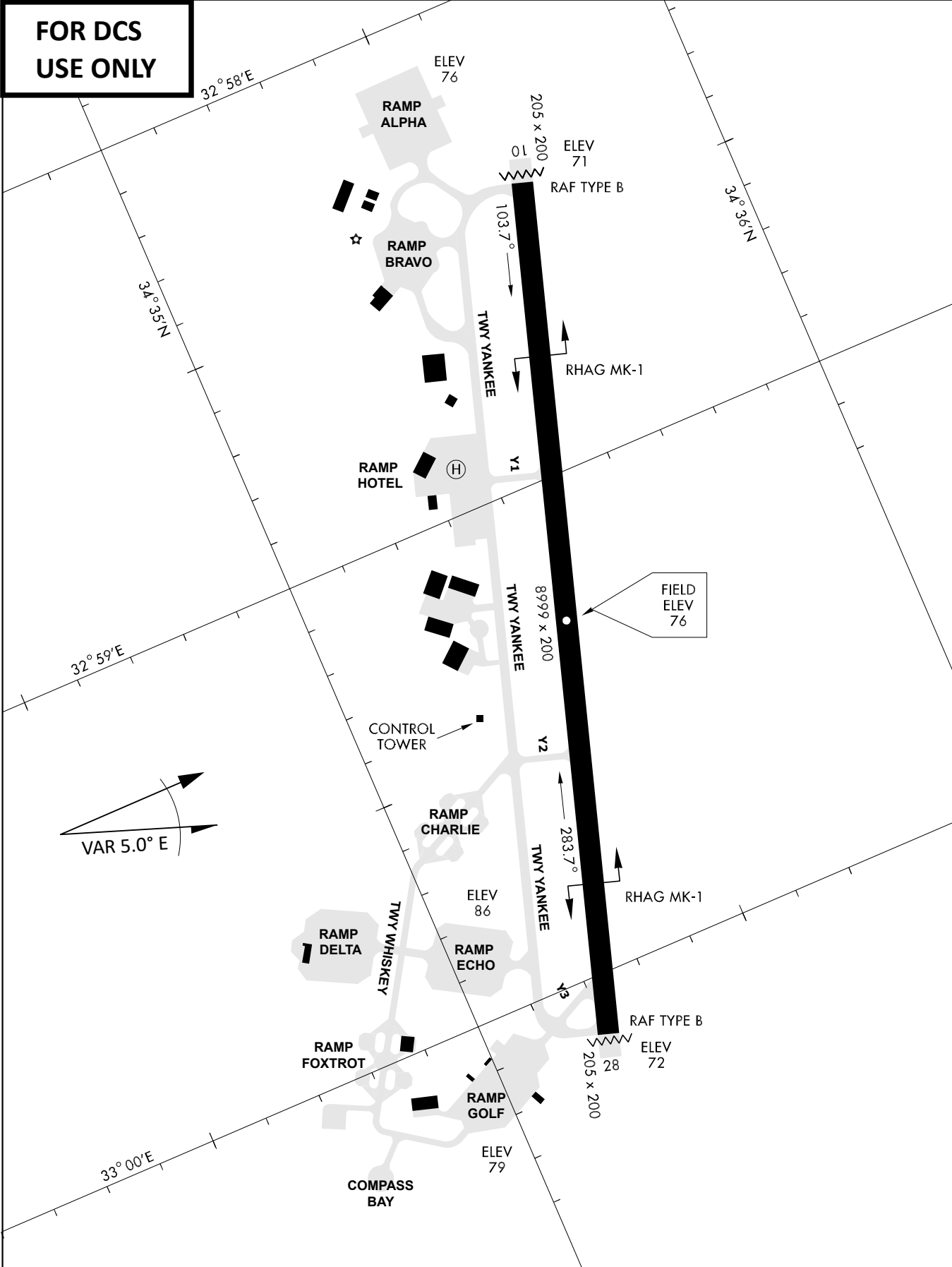
KTC 1400 C

	0	1	2	3	4	5	6	7	8	9
A	QEKJ	DOX	HUB	VR	PS	LWF	MN	TG	IA	YC
B	QRXH	JYK	IMD	OP	LC	EFV	GW	BS	TU	AN
C	UARE	JTB	FCX	NM	DY	KSP	OI	VW	HQ	GL
D	WYOQ	MFJ	EAN	GB	VL	PRX	IT	SK	DU	CH
E	VBSY	MIN	CRO	QD	EP	HUT	WK	JF	LA	GX
F	MCHK	ANI	XTP	EW	VL	UDG	QB	JO	YR	SF
G	VSMJ	RNE	QHK	LC	BA	FIO	PT	WG	YX	DU
H	ISHF	GXR	QCT	AD	MY	PBL	KJ	EU	NO	WV
I	ECPT	XHW	BQY	NF	RU	DLS	VK	IM	GJ	AO
J	IYNL	CHW	SJP	DV	BO	XTF	RG	AK	UE	QM
K	LVOU	FJH	WTK	AX	IB	QEG	NP	RS	DC	YM
L	OQCL	PTD	SNR	MF	IH	WYK	UG	JE	XV	AB
M	IMXV	EYG	QHR	WK	OB	PJU	ST	AD	LN	FC
N	CHIB	PWJ	VYK	EA	OX	RFM	UQ	NG	TD	SL
O	UCDG	QEN	VRX	BP	OK	TSA	JI	WH	FY	LM
P	UXGN	ERF	CIW	LQ	YO	APK	BJ	DT	HS	MV
Q	DMYX	RTF	woQ	SE	CK	VAJ	HN	BP	IU	LG
R	UQMA	WKJ	CLS	EH	TB	DVN	FO	RG	XI	PY
S	APDS	HWK	UTY	MB	IL	NVR	FG	QE	XJ	CO
T	UHFR	GXV	AQY	JN	SD	PKE	WM	BL	TC	IO
U	TUWM	JYO	DLB	PX	EF	AKV	CG	HS	NQ	IR
V	GXQP	HSA	JCL	YF	EV	UNO	RT	WB	KI	MD
W	QTEP	YXV	MRL	GS	UA	KIH	CB	OF	WJ	ND
X	CPML	WBD	JFR	KV	YG	QHI	NS	AE	UX	TO
Y	IAEJ	GBY	MVF	OD	KR	TCP	UH	QX	WS	LN

NAVAIDS

Id	Name	Channel	Position	Elevation
DAN	Incirlik	21	N37 00.950 E035 26.883	243
AKR	Akrotiri	107	N34 34.765 E032 57.769	147
PHA	Paphos	79	N34 42.997 E032 28.963	35
RMD	Ramat David	84	N32 39.892 E035 11.265	136
OS66	Kuweires Military Aviation Institute	36	N36 11.362 E037 34.226	1200

**FOR DCS
 USE ONLY**

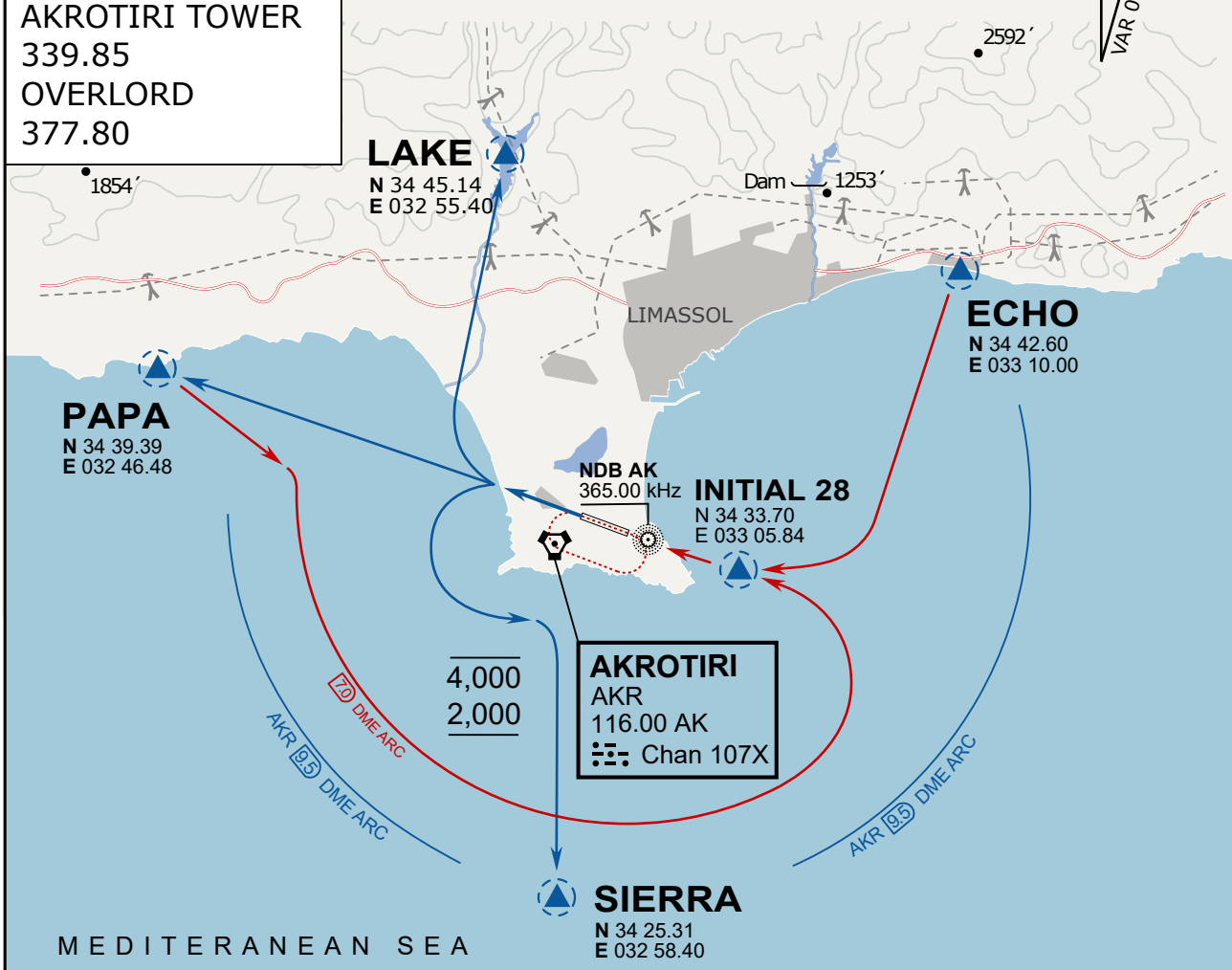


ATIS	AKROTIRI GND	AKROTIRI TWR	OVERLORD CONTROL	TACAN	FIELD ELEVATION
288.20 MHz	240.10 122.10	339.85 130.075	377.8	AKR 107X	75 [ft] 23 [m]

ATIS
 288.20
AKROTIRI GROUND
 240.10
AKROTIRI TOWER
 339.85
OVERLORD
 377.80

NOT FOR CIVIL USE

CAUTION: If unable to comply
 with restrictions advise ATC
 prior to departure.



ARR / DEP ROUTE DESCRIPTION

STRAIGHT-IN RWY28

Pass ENTRY at 5.000' MSL or below, pass INITIAL at 1.500' MSL or below.

OVERHEAD BREAK RWY28

Pass ENTRY at 5.000' MSL or below, pass INITIAL at 2.000' MSL, break to the south.

DEPARTURE GENERAL

Pass Departure end of runway at 1.000' or below.

DEP RWY28 PAPA: Fly straight ahead to exit.

DEP RWY28 LAKE: Fly straight ahead until coast, than right turn direct exit.

DEP RWY28 SIERRA: Fly straight ahead until coastline, then climbing left turn, intercept AKR R-180 to exit.

DEP ECHO: no exit.

ATIS

288.20

AKROTIRI GROUND

240.10

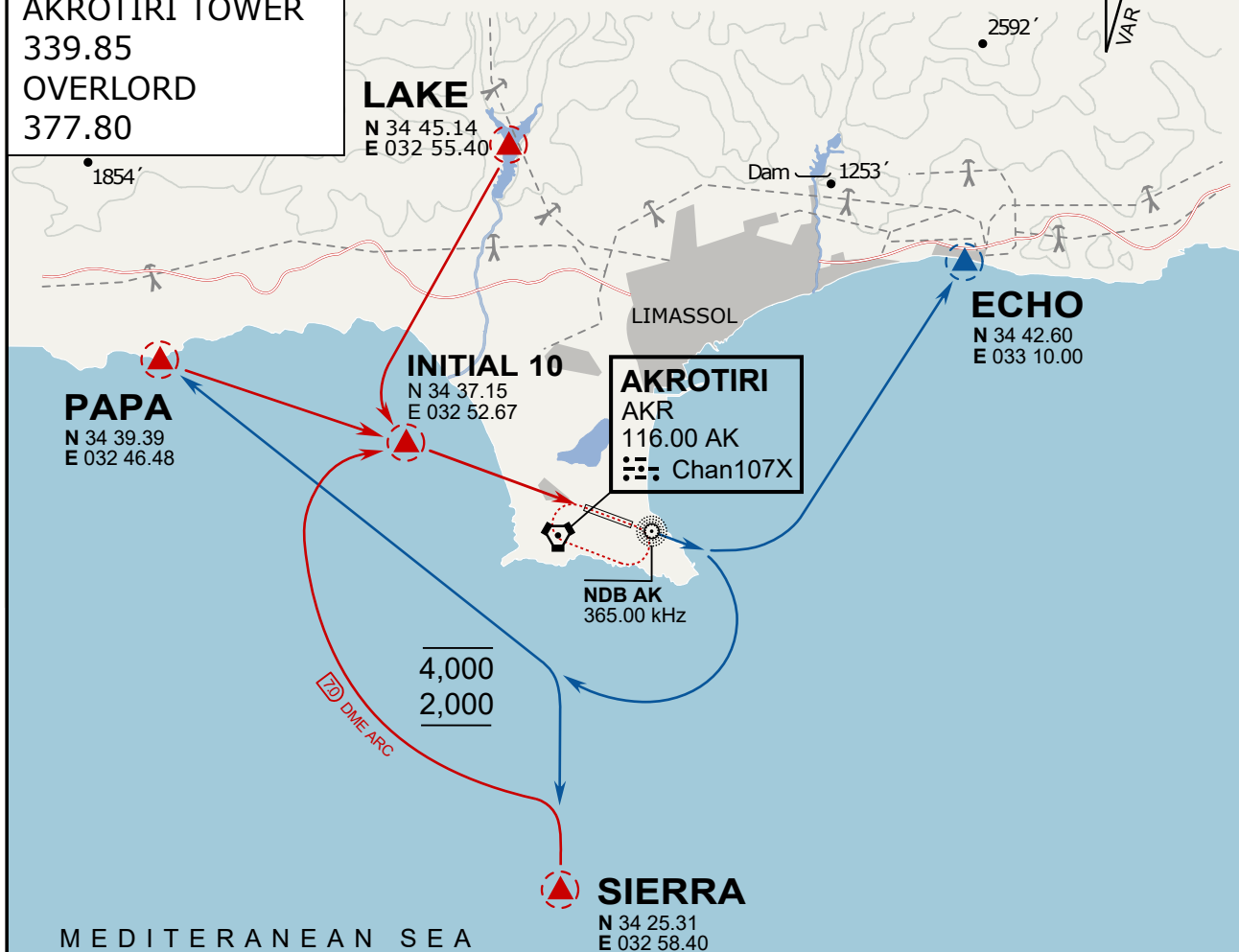
AKROTIRI TOWER

339.85

OVERLORD

377.80

NOT FOR CIVIL USE

CAUTION: If unable to comply
with restrictions advise ATC
prior to departure.

ARR / DEP ROUTE DESCRIPTION

ARRIVAL GENERAL

Pass Entry at 5.000' or below. Overhead Brake RWY 10: pass INITIAL 10 at 2.000' MSL.
Straight-in RWY 10 : pass INITIAL 1.500' or below.

ARR RWY10 PAPA / LAKE: Direct initial.

ARR RWY10 SIERRA: Intercept ARC 7 of AKR to INITIAL 10.

ARR ECHO: no ENTRY.

DEPARTURE GENERAL

Pass Departure end of runway at 1.000' AGL or below. Keep RWY heading until coastline.

DEP RWY10 ECHO: Direct EXIT.

DEP RWY10 SIERRA: Climbing right turn, intercept R180 AKR to Sierra.

DEP RWY10 PAPA: Climbing right turn until R180 AKR, then direct Papa

DEP LAKE: no EXIT.