

MISSION DATA CARD

| OPORD | | Callsign | | Mission | | Date/Time | |
|----------------|---------------------|----------|------|----------------|------|-------------|--|
| 2825/2024 | | Beast 3 | | Training | | 182000APR24 | |
| Task | Longbow Net und FCR | | | | | Freq | |
| AO | | | | | | 133.5 | |
| Departure | | | | Recovery | | | |
| Helicopter VFR | | | | Helicopter VFR | | | |
| # | Callsign | Pilot | IFF | TCN | LSR | NET | |
| -1 | Beast 3-1 | Hudson | 2131 | 1Y | 1611 | | |
| -2 | Beast 3-2 | Mütze | 2132 | 64Y | 1612 | | |
| -3 | Beast 3-3 | Warblade | 2133 | 64X | 1613 | | |

LOADOUT

| | | | |
|-----|----------------------|------|-----------|
| A/A | | GUN | 100% HEDP |
| A/G | 8xAGM114K, 8xAGM114L | CHF | 30 |
| POD | | FLR | 60 |
| TKS | | FUEL | 100% |

TOLD

| | | | | | |
|------|---------|--------|-------|-------|------|
| | Takeoff | Target | Joker | Bingo | Land |
| FUEL | 2513 | | | | |

AIRBASES

| | Name | TCN | ATIS | GND | TWR | RWY | Elev | ILS |
|-----|--------------|------|-------|-------|--------|-----|------|-------|
| Dep | Akrotiri AFB | 107X | 288.2 | 240.1 | 339.85 | 28 | 62 | 109.7 |
| Arr | Akrotiri AFB | 107X | 288.2 | 240.1 | 339.85 | 28 | 62 | 109.7 |

FLIGHTPLAN

| # | Name | Navaid/Coords/DME | ALT | TOT |
|---|--------|----------------------|-----|-----|
| 1 | LAKE | N34 45.15 E032 55.40 | | |
| 2 | ITR.T1 | N34 47.32 E032 58.62 | | |

COMMS

| Radio | Usage |
|-------|--------|
| 1 | 133.5 |
| 2 | 329.85 |
| 3 | 35.35 |

OTHER FLIGHTS

| Callsign | Mission | Airframe | Freq | TCN | Grpld | Laser |
|-----------|---------------------------|------------|------------------|------|-------|-------|
| Tiger 1 | Training | 2x F/A-18C | 261.15 | 1/64 | | 155X |
| AO | Cape Pyla Bombing Range | Task | Training HADB | | | |
| T-Rex 2 | Training | 4x A-10C | 132.25 | 1/64 | 25 | 165X |
| AO | NICOSIA CAS TRAINING AREA | Task | Training MAV GBU | | | |
| Monster 1 | Training | 1x A-10C | 132.15 | 1/64 | 21 | 161X |
| AO | Akrotiri - Paphos | Task | IFR-Route | | | |

RADIO CHANNELS

| # | Freq | Name |
|----|---------|-----------------------------|
| 1 | | Flight/Squadron specific |
| 2 | 288.2 | Akrotiri ATIS |
| 3 | 240.1 | Akrotiri Ground |
| 4 | 339.85 | Aktrotiri Tower |
| 5 | 335.05 | Akrotiri Approach |
| 6 | 360.1 | Incirlik Tower |
| 7 | 371.35 | Incirlik Ground |
| 8 | 377.475 | Incirlik ATIS |
| 9 | | No Preset |
| 10 | 127.3 | Paphos ATIS |
| 11 | 353.8 | Paphos Tower |
| 12 | 304.0 | CVN-73 George Washington |
| 13 | 302.0 | LHA-1 Tarawa |
| 14 | 259.0 | CV-59 Forrestal |
| 15 | | No Preset |
| 16 | 377.8 | Overlord |
| 17 | 265.0 | KC-135 Texaco-1 medium/slow |
| 18 | 319.8 | KC-135 Arco-1 |
| 19 | 360.8 | KC-135MPRS Arco-2 |
| 20 | 256.0 | S-3B Recovery Tanker |

RAMROD

| | | | | | | | | | |
|---|---|---|---|---|---|---|---|---|---|
| 0 | 1 | 2 | 3 | 4 | 5 | 6 | 7 | 8 | 9 |
| B | L | U | S | T | E | R | I | N | G |

KTC 1400 C

| | 0 | 1 | 2 | 3 | 4 | 5 | 6 | 7 | 8 | 9 |
|---|------|-----|-----|----|----|-----|----|----|----|----|
| A | QEKJ | DOX | HUB | VR | PS | LWF | MN | TG | IA | YC |
| B | QRXH | JYK | IMD | OP | LC | EFV | GW | BS | TU | AN |
| C | UARE | JTB | FCX | NM | DY | KSP | OI | VW | HQ | GL |
| D | WYOQ | MFJ | EAN | GB | VL | PRX | IT | SK | DU | CH |
| E | VBSY | MIN | CRO | QD | EP | HUT | WK | JF | LA | GX |
| F | MCHK | ANI | XTP | EW | VL | UDG | QB | JO | YR | SF |
| G | VSMJ | RNE | QHK | LC | BA | FIO | PT | WG | YX | DU |
| H | ISHF | GXR | QCT | AD | MY | PBL | KJ | EU | NO | WV |
| I | ECPT | XHW | BQY | NF | RU | DLS | VK | IM | GJ | AO |
| J | IYNL | CHW | SJP | DV | BO | XTF | RG | AK | UE | QM |
| K | LVOU | FJH | WTK | AX | IB | QEG | NP | RS | DC | YM |
| L | OQCL | PTD | SNR | MF | IH | WYK | UG | JE | XV | AB |
| M | IMXV | EYG | QHR | WK | OB | PJU | ST | AD | LN | FC |
| N | CHIB | PWJ | VYK | EA | OX | RFM | UQ | NG | TD | SL |
| O | UCDG | QEN | VRX | BP | OK | TSA | JI | WH | FY | LM |
| P | UXGN | ERF | CIW | LQ | YO | APK | BJ | DT | HS | MV |
| Q | DMYX | RTF | woq | SE | CK | VAJ | HN | BP | IU | LG |
| R | UQMA | WKJ | CLS | EH | TB | DVN | FO | RG | XI | PY |
| S | APDS | HWK | UTY | MB | IL | NVR | FG | QE | XJ | CO |
| T | UHFR | GXV | AQY | JN | SD | PKE | WM | BL | TC | IO |
| U | TUWM | JYO | DLB | PX | EF | AKV | CG | HS | NQ | IR |
| V | GXQP | HSA | JCL | YF | EV | UNO | RT | WB | KI | MD |
| W | QTEP | YXV | MRL | GS | UA | KIH | CB | OF | WJ | ND |
| X | CPML | WBD | JFR | KV | YG | QHI | NS | AE | UX | TO |
| Y | IAEJ | GBY | MVF | OD | KR | TCP | UH | QX | WS | LN |

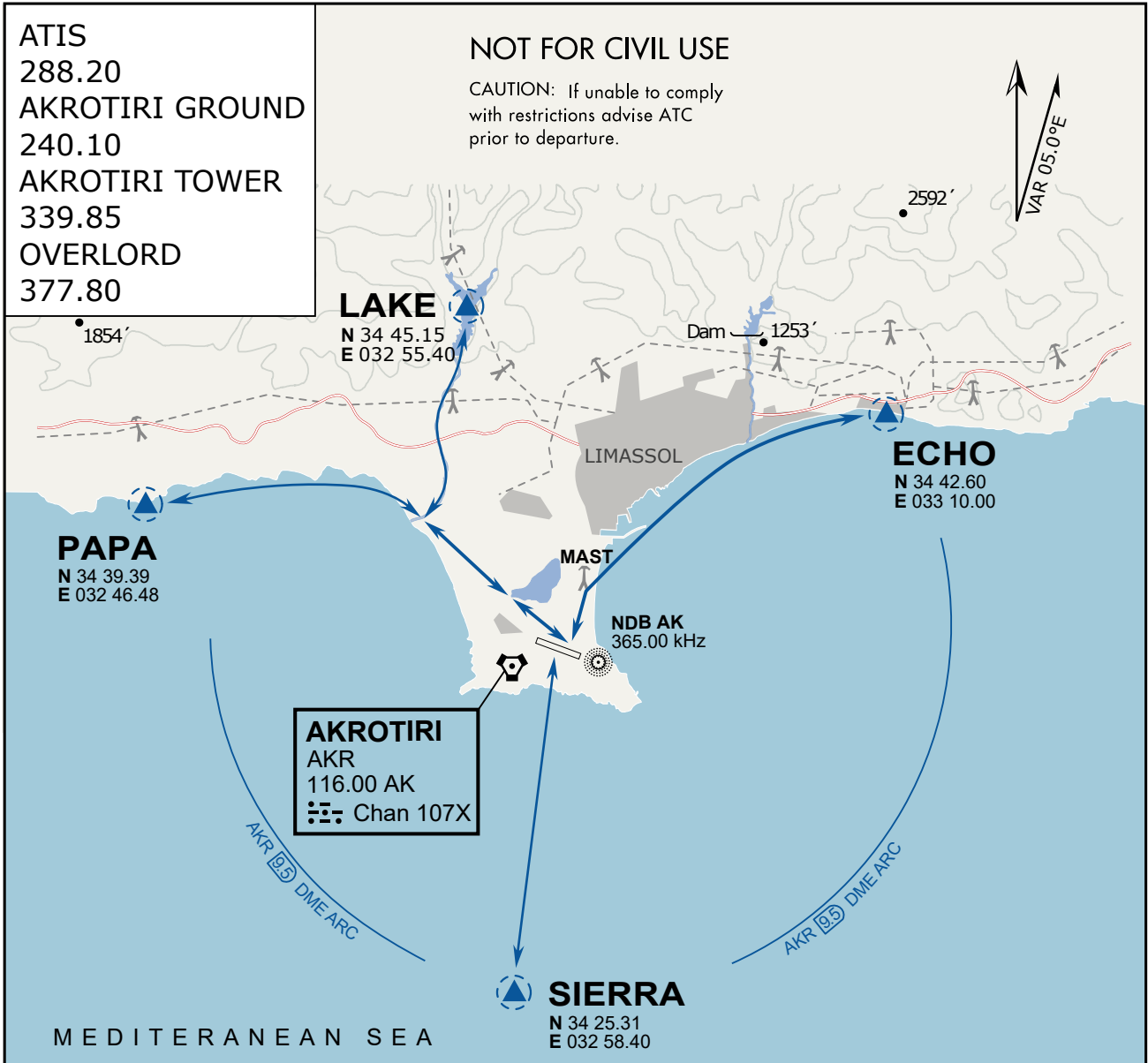
NAVAIDS

| Id | Name | Channel | Position | Elevation |
|-----------|---|----------------|------------------------|------------------|
| DAN | Incirlik | 21 | N37 00.950 E035 26.883 | 243 |
| AKR | Akrotiri | 107 | N34 34.765 E032 57.769 | 147 |
| PHA | Paphos | 79 | N34 42.997 E032 28.963 | 35 |
| RMD | Ramat David | 84 | N32 39.892 E035 11.265 | 136 |
| OS66 | Kuweires Military Aviation Institute | 36 | N36 11.362 E037 34.226 | 1200 |

**FOR DCS
 USE ONLY**



| ATIS | AKROTIRI GND | AKROTIRI TWR | OVERLORD CONTROL | TACAN | FIELD ELEVATION |
|------------|-----------------|------------------|------------------|----------|-----------------------|
| 288.20 MHz | 240.10 122.10 | 339.85 130.075 | 377.8 | AKR 107X | 75 [ft] 23 [m] |



ARR / DEP ROUTE DESCRIPTION

GENERAL

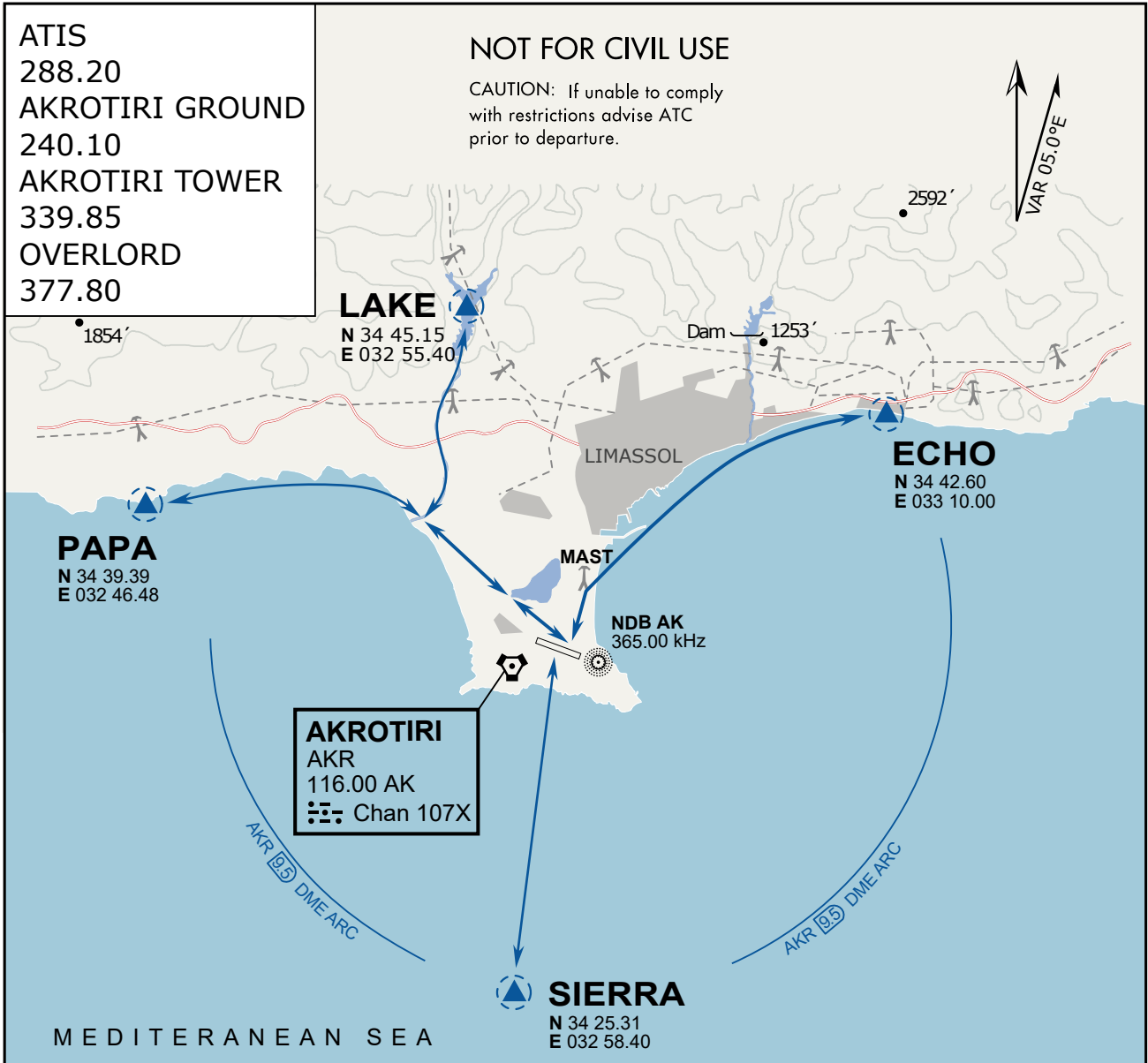
Stay at or below 500' AGL.

DEPARTURE

- ECHO: Via the 4 masts, along the coastline to EXIT.
- LAKE: Stay SOUTH WEST of the dry lake, to the river mouth, follow river to EXIT.
- PAPA: Stay SOUTH WEST of the dry lake, follow coastline to EXIT.
- SIERRA: Direct EXIT.

ARRIVAL

- LAKE: Follow river to coastline, then direct LCRA.
- PAPA: Follow coastline to rivermouth, then direct LCRA.
- ECHO: Follow coastline to the 4 masts, then to LCRA.
- SIERRA: Direct to LCRA.



ARR / DEP ROUTE DESCRIPTION

GENERAL

Stay at or below 500' AGL.

DEPARTURE

- ECHO: Via the 4 masts, along the coastline to EXIT.
- LAKE: Stay SOUTH WEST of the dry lake, to the river mouth, follow river to EXIT.
- PAPA: Stay SOUTH WEST of the dry lake, follow coastline to EXIT.
- SIERRA: Direct EXIT.

ARRIVAL

- LAKE: Follow river to coastline, then direct LCRA.
- PAPA: Follow coastline to rivermouth, then direct LCRA.
- ECHO: Follow coastline to the 4 masts, then to LCRA.
- SIERRA: Direct to LCRA.