

MISSION DATA CARD

OPORD		Callsign		Mission		Date/Time		
2823/2024		Edelweiss		Training		110051APR24		
Task						Freq		
AO						264.05		
Departure				Recovery				
RWY10 SID				TAC 28				
#	Callsign		Pilot		IFF	TCN	LSR	NET

LOADOUT

A/A						GUN	
A/G						CHF	
POD						FLR	
TKS						FUEL	

TOLD

	Takeoff	Target	Joker	Bingo	Land
FUEL	11087				

AIRBASES

	Name	TCN	ATIS	GND	TWR	RWY	Elev	ILS
Dep	Akrotiri AFB	107X	288.2	240.1	339.85	28	62	109.7
Arr	Akrotiri AFB	107X	288.2	240.1	339.85	28	62	109.7

RADIO CHANNELS

#	Freq	Name
1		Flight/Squadron specific
2	288.2	Akrotiri ATIS
3	240.1	Akrotiri Ground
4	339.85	Aktrotiri Tower
5	335.05	Akrotiri Approach
6	360.1	Incirlik Tower
7	371.35	Incirlik Ground
8	377.475	Incirlik ATIS
9		No Preset
10	127.3	Paphos ATIS
11	353.8	Paphos Tower
12	304.0	CVN-73 George Washington
13	302.0	LHA-1 Tarawa
14	259.0	CV-59 Forrestal
15		No Preset
16	377.8	Overlord
17	265.0	KC-135 Texaco-1 medium/slow
18	319.8	KC-135 Arco-1
19	360.8	KC-135MPRS Arco-2
20	256.0	S-3B Recovery Tanker

RAMROD

0	1	2	3	4	5	6	7	8	9
F	L	A	M	I	N	G	O	E	S

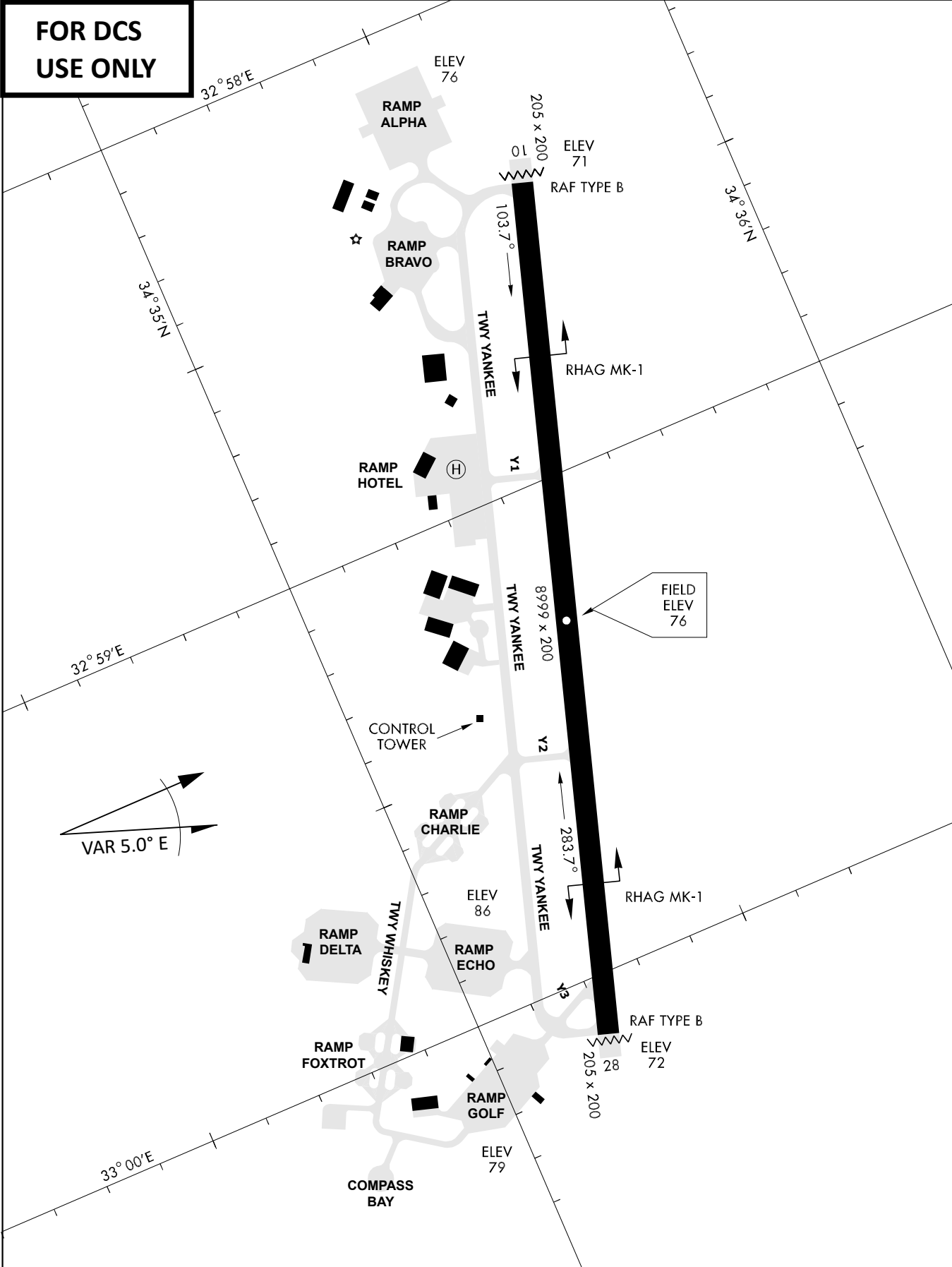
KTC 1400 C

	0	1	2	3	4	5	6	7	8	9
A	RLPI	XYJ	ENH	MT	VS	CKO	AF	DG	WB	QU
B	NADQ	EPK	UTJ	GL	XH	CYW	RV	IM	FB	OS
C	JMYW	PXR	OUG	AC	DE	QSL	KF	BN	HV	IT
D	NRCY	XWF	GDE	MA	BK	IHV	OP	JQ	LU	TS
E	BRJQ	VKL	GXH	ON	IE	DUF	CT	MA	SY	WP
F	HNYT	AOR	KEV	GJ	SD	IBF	LM	WP	XC	QU
G	ENPC	BUK	SDR	GO	JW	IYM	AQ	XV	FT	HL
H	GVYE	JXL	QPO	UH	DM	NTF	BA	KI	RC	SW
I	PFCA	GLO	KIR	QB	WM	DTS	YU	EH	NJ	VX
J	KFPS	JLD	BEH	MR	CU	WAI	OY	QG	XV	TN
K	GNJS	WRA	LBI	QP	DV	KFH	XT	MU	EY	CO
L	XLUG	QSM	VKI	BY	RO	DWE	HJ	AP	NT	FC
M	MSEW	RIQ	VAO	KP	NJ	TYF	LC	HX	BU	GD
N	MKIS	AWL	DQC	RB	JU	FXG	HV	OE	PY	NT
O	RXMJ	NPQ	KEU	HO	YB	FSW	TD	GL	AC	VI
P	SGWH	QKU	MVI	CE	DR	PYX	ON	AF	JL	BT
Q	XJIL	NHO	RFM	YT	SB	CVA	DE	GQ	PW	KU
R	JXOA	PFB	CLN	RH	WV	YIM	SD	KU	TG	QE
S	LBDF	RGX	TUJ	SQ	OH	INK	YV	PW	MA	CE
T	NUSM	AGT	WIR	HE	DO	QYF	LP	VC	BK	JX
U	MKIC	XUR	GHA	NJ	YF	QDS	OT	VE	PB	LW
V	TPQX	BSK	NLM	JA	IY	ERV	DC	GU	FO	WH
W	CHIS	EAY	UMX	PQ	JN	LBG	KW	TV	OR	DF
X	BNFY	HOI	MLV	KP	JW	CGS	DE	XT	UQ	AR
Y	XNLY	AUO	JQV	SG	IH	DWF	PE	BT	CK	MR

NAVAIDS

Id	Name	Channel	Position	Elevation
DAN	Incirlik	21	N37 00.950 E035 26.883	243
AKR	Akrotiri	107	N34 34.765 E032 57.769	147
PHA	Paphos	79	N34 42.997 E032 28.963	35
RMD	Ramat David	84	N32 39.892 E035 11.265	136
OS66	Kuweires Military Aviation Institute	36	N36 11.362 E037 34.226	1200

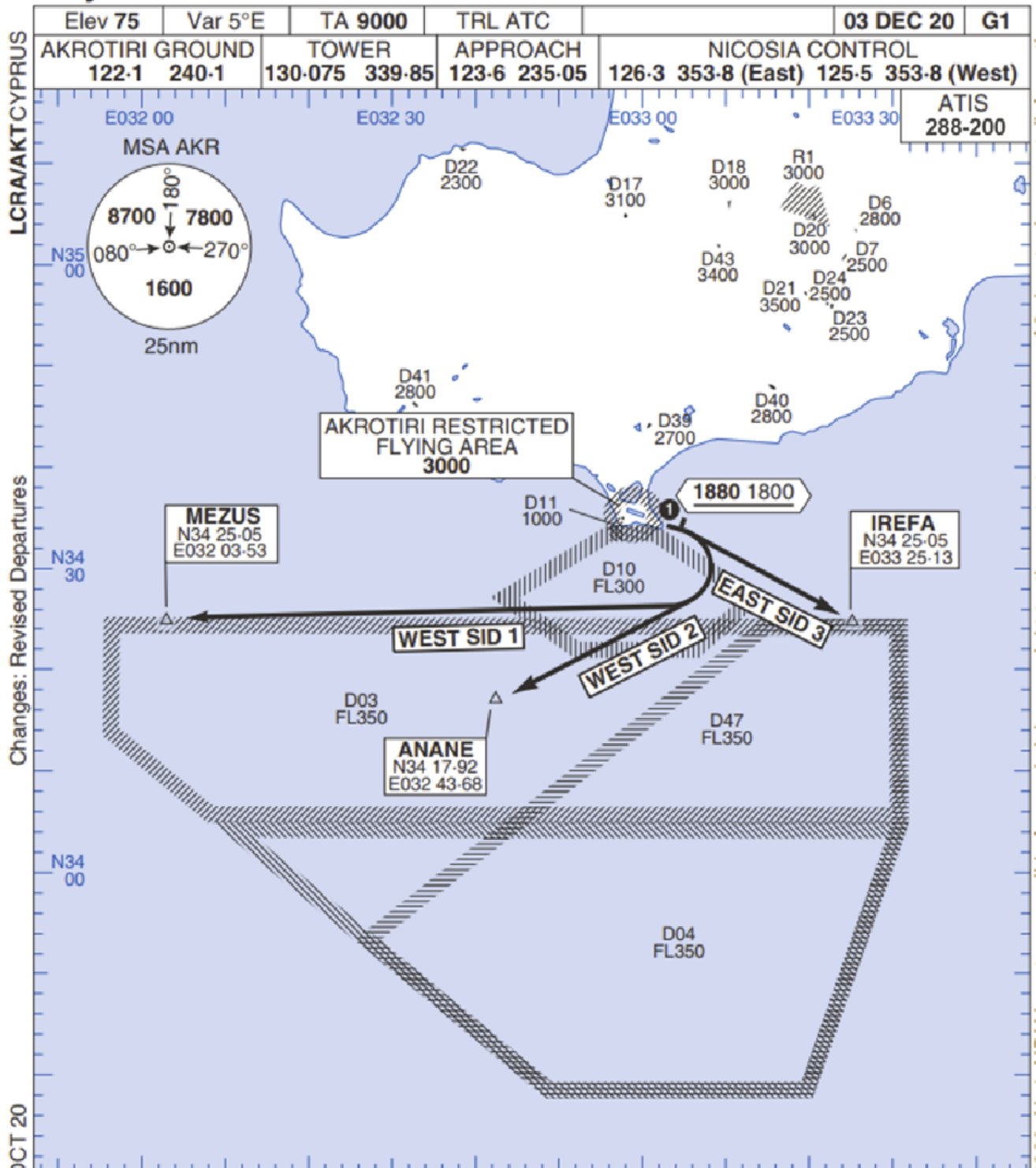
**FOR DCS
 USE ONLY**



ATIS	AKROTIRI GND	AKROTIRI TWR	OVERLORD CONTROL	TACAN	FIELD ELEVATION
288.20 MHz	240.10 122.10	339.85 130.075	377.8	AKR 107X	75 [ft] 23 [m]

Rwy 10 OMNIDIRECTIONAL DEPARTURES

AKROTIRI



LCRA/AKTCYPRUS

Changes: Revised Departures

No1 AIDU Last Amended 06 OCT 20

Elev 75	Var 5°E	TA 9000	TRL ATC		03 DEC 20	G1
AKROTIRI GROUND 122.1 240.1		TOWER 130.075 339.85		APPROACH 123.6 235.05		NICOSIA CONTROL 126.3 353.8 (East) 125.5 353.8 (West)
						ATIS 288-200

- ① Minimum climb gradient 7% to 1880 1800 for obstacle and operational purposes.
- 2. No turns before DER.
- 3. Turns to north of Rwy **prohibited**.
- 4. Acft unable to locate MEZUS/ANANE/IREFA should request radar vectors from ATC.

SID	RWY	ROUTEING (Including Mnm Noise Routes)
WEST SID 1	10 103°M	Ahead on Rwy Tr to 1880 1800, then right direct to MEZUS. SID terminates at 9000.
WEST SID 2		Ahead on Rwy Tr to 1880 1800, then right direct to ANANE. SID terminates at 9000.
EAST SID 3		Ahead on Rwy Tr to 1880 1800 then right direct to IREFA. SID terminates at 9000.

AKROTIRI
MIPS

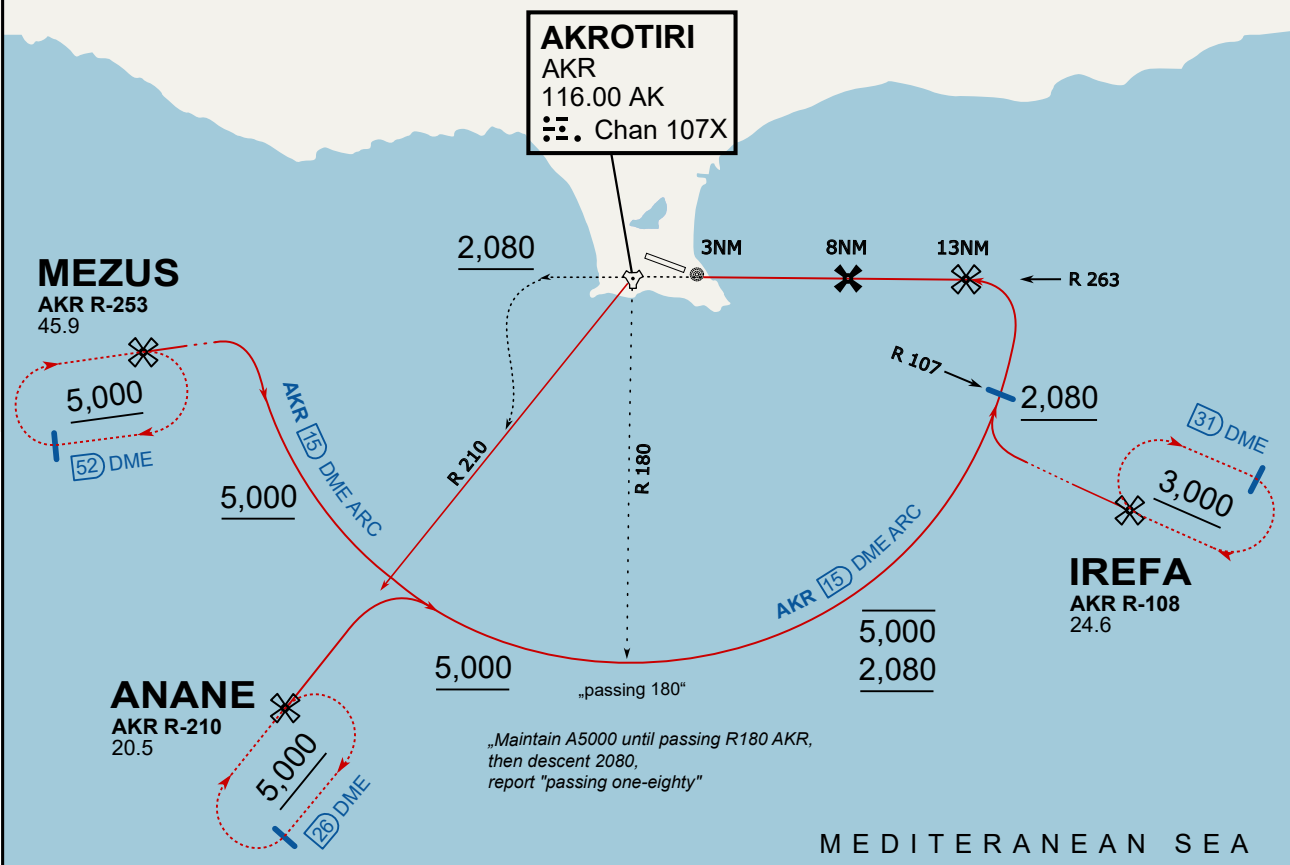
Rwy 10 OMNIDIRECTIONAL DEPARTURES

© UK MOD Crown Copyright 2020. No1 AIDU is not responsible for, and claims no right to, the content or accuracy of 3rd party documents/information.

ATIS
 288.200
AKROTIRI GROUND
 122.100
AKROTIRI TOWER
 339.850
APP (OVERLORD)
 377.800

NOT FOR CIVIL USE

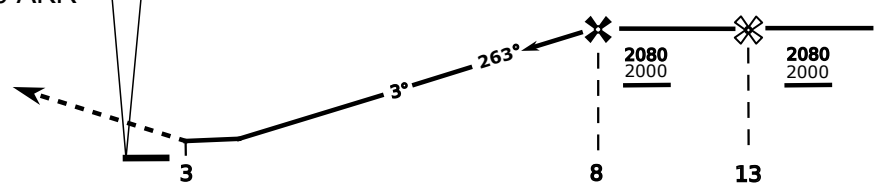
CAUTION: If unable to comply with restrictions advise ATC prior to departure.



On Track 263° climb A 4.000'.
 passing 2.080' (2.000' AAL)
 turn left and intercept R-210 AKR
 to ANANE.
 Enter ANANE Holding.



DME AKR	7	6	5	4
ALT	1780	1460	1140	820



THR Elev 74ft DME AKR

CAT	TAC	CIRCLE	GS (kts)	80	120	150	180	210
A	500(430)	680 (610) 2000m	FAF - MAPt (4.1NM)	3:06	2:03	1:38	1:22	1:10
B	1300m		RoD (fpm)	420	640	800	950	1110
C	780 (710)	780 (710) 3300m	- CIRCLING PROHIBITED N of Rwy - final track is offset 20° right of RCL and Intcp 1.1NM before THR - when established on final contact tower - Timing not Auth to define MAPt					
D	2600m	780 (710) 3600m						
E	1380 (1310) 5000m	1380 (1310) 5000m						

