

MISSION DATA CARD

OPORD		Callsign		Mission		Date/Time		
2822/2024		BamBam 3		Training		152000APR24		
Task						Freq		
AO						133.5		
Departure				Recovery				
Helicopter VFR				Helicopter VFR				
#	Callsign		Pilot		IFF	TCN	LSR	NET
-1	BamBam 3-1		Warblade/Laud		4731	1Y	1611	
-2	BamBam 3-2		Mütze		4732	64Y	1612	

LOADOUT

A/A						GUN	
A/G						CHF	
POD						FLR	
TKS						FUEL	

TOLD

	Takeoff	Target	Joker	Bingo	Land
FUEL	2513				

AIRBASES

	Name	TCN	ATIS	GND	TWR	RWY	Elev	ILS
Dep	Akrotiri AFB	107X	288.2	240.1	339.85	28	62	109.7
Arr	Akrotiri AFB	107X	288.2	240.1	339.85	28	62	109.7

FLIGHTPLAN

#	Name	Navaid/Coords/DME	ALT	TOT
1	ECHO	N34 42.60 E033 10		
2	CTR.T1	N35 09.46 E033 16.24		

COMMS

Radio	Usage
1	133.5
2	339.85
3	35.35

OTHER FLIGHTS

Callsign	Mission	Airframe	Freq	TCN	Grpld	Laser
Monster 1	Training	4x A-10C	132.15	1/64	21	161X
AO	Cape Pyla Bombing Range	Task	CAS			

RADIO CHANNELS

#	Freq	Name
1		Flight/Squadron specific
2	288.2	Akrotiri ATIS
3	240.1	Akrotiri Ground
4	339.85	Aktrotiri Tower
5	335.05	Akrotiri Approach
6	360.1	Incirlik Tower
7	371.35	Incirlik Ground
8	377.475	Incirlik ATIS
9		No Preset
10	127.3	Paphos ATIS
11	353.8	Paphos Tower
12	304.0	CVN-73 George Washington
13	302.0	LHA-1 Tarawa
14	259.0	CV-59 Forrestal
15		No Preset
16	377.8	Overlord
17	265.0	KC-135 Texaco-1 medium/slow
18	319.8	KC-135 Arco-1
19	360.8	KC-135MPRS Arco-2
20	256.0	S-3B Recovery Tanker

RAMROD

0	1	2	3	4	5	6	7	8	9
G	O	D	F	A	T	H	E	R	S

KTC 1400 C

	0	1	2	3	4	5	6	7	8	9
A	ALXG	UPN	RQK	FW	VD	HOB	MT	IE	YC	JS
B	DCYO	MNI	HGR	AL	TE	PSX	VJ	FU	WB	QK
C	ECRF	PAV	QNX	YM	UW	BOT	DS	GJ	KL	HI
D	GEJT	NKR	IAP	QL	OB	SYD	WX	FM	UC	HV
E	GXFM	CDN	SYE	BJ	VA	QLW	TI	UK	RP	OH
F	CIVY	RDS	TAQ	FP	GK	LUB	EM	JX	OH	NW
G	AXLH	CFS	QYJ	DK	UT	GWN	VB	RP	IO	ME
H	TPAX	FDM	BKH	GC	NR	LYI	JE	WO	UQ	VS
I	NFVJ	DQC	IXE	GH	RL	YSW	OM	AP	KU	BT
J	NYOB	KHX	WDM	PL	QG	TAU	IJ	VS	RE	FC
K	RFAO	TLY	KBU	NP	SC	HVD	GW	EX	MJ	QI
L	XCBF	ULY	SMP	VA	QK	OHG	DN	EJ	WR	TI
M	DSCP	EVL	KWT	GN	JF	XRU	MB	QO	AH	YI
N	MRKS	WOJ	HYE	IP	UL	GBF	DT	NV	AX	CQ
O	FSHL	WBK	XYV	QM	CN	RTO	AP	JI	ED	UG
P	WASB	YNF	QMX	UD	OL	JVH	IK	TC	EP	GR
Q	LXND	FQI	CER	BA	VK	WUM	SH	JO	PG	YT
R	WPFY	MAK	HJT	OE	NG	LRQ	SC	XI	UD	VB
S	XNUM	TPV	OGI	JF	KQ	ADL	SE	CR	WY	BH
T	NAKR	LGT	MYW	BV	SQ	CPD	EH	XI	JO	FU
U	TSDE	AWM	JPN	KI	CX	FOH	GU	QY	VR	BL
V	RAHF	DBT	CPL	WJ	GO	EVQ	IN	UX	YK	SM
W	GRMV	QBW	STJ	HI	YE	XLK	FP	OD	CN	UA
X	QDSB	EMX	RAO	LI	WT	VKU	YN	GF	HC	PJ
Y	DGRP	KAL	HNS	YB	VU	TWJ	QC	OX	EM	IF

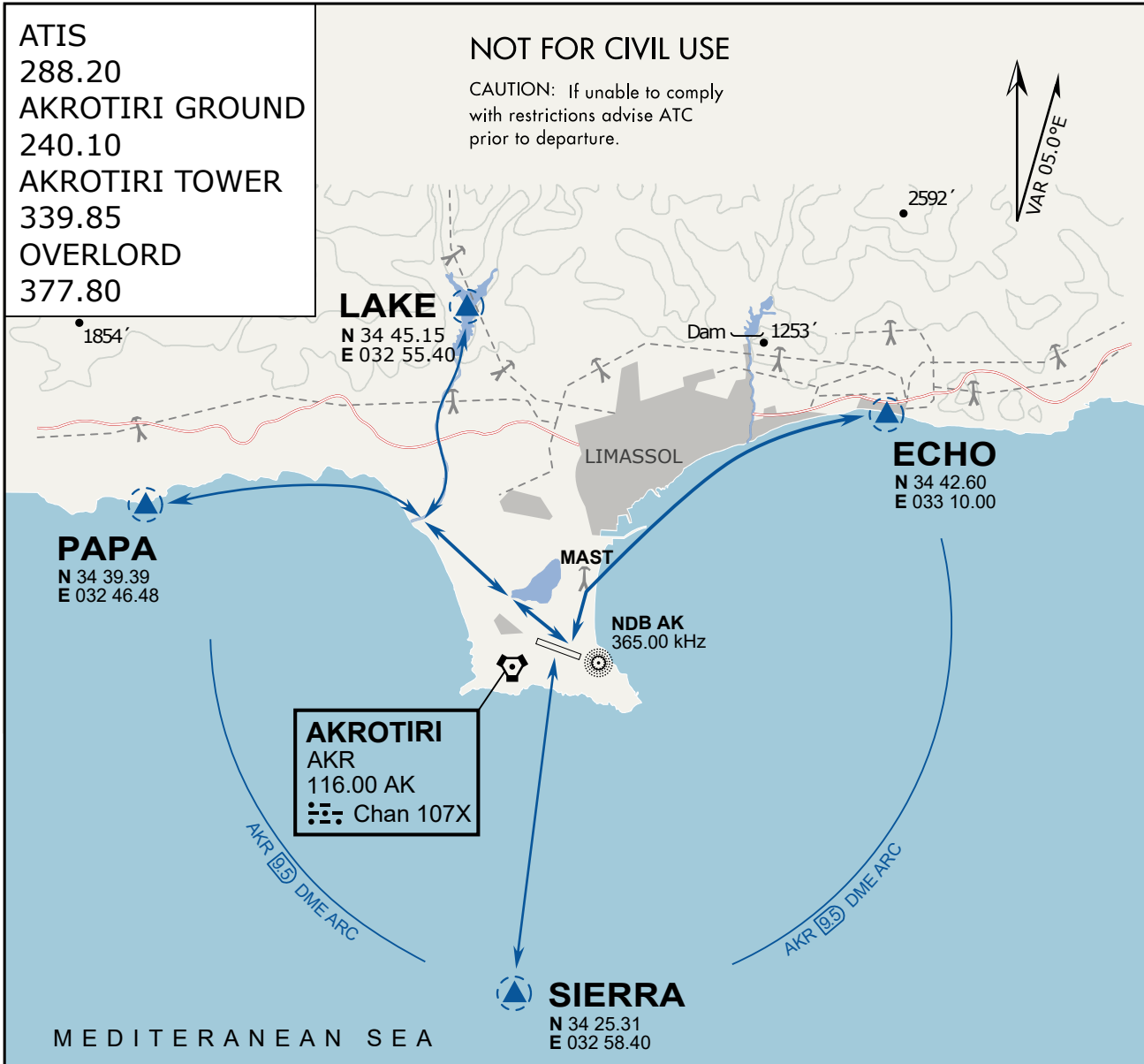
NAVAIDS

Id	Name	Channel	Position	Elevation
DAN	Incirlik	21	N37 00.950 E035 26.883	243
AKR	Akrotiri	107	N34 34.765 E032 57.769	147
PHA	Paphos	79	N34 42.997 E032 28.963	35
RMD	Ramat David	84	N32 39.892 E035 11.265	136
OS66	Kuweires Military Aviation Institute	36	N36 11.362 E037 34.226	1200

**FOR DCS
 USE ONLY**



ATIS	AKROTIRI GND	AKROTIRI TWR	OVERLORD CONTROL	TACAN	FIELD ELEVATION
288.20 MHz	240.10 122.10	339.85 130.075	377.8	AKR 107X	75 [ft] 23 [m]



ARR / DEP ROUTE DESCRIPTION

GENERAL

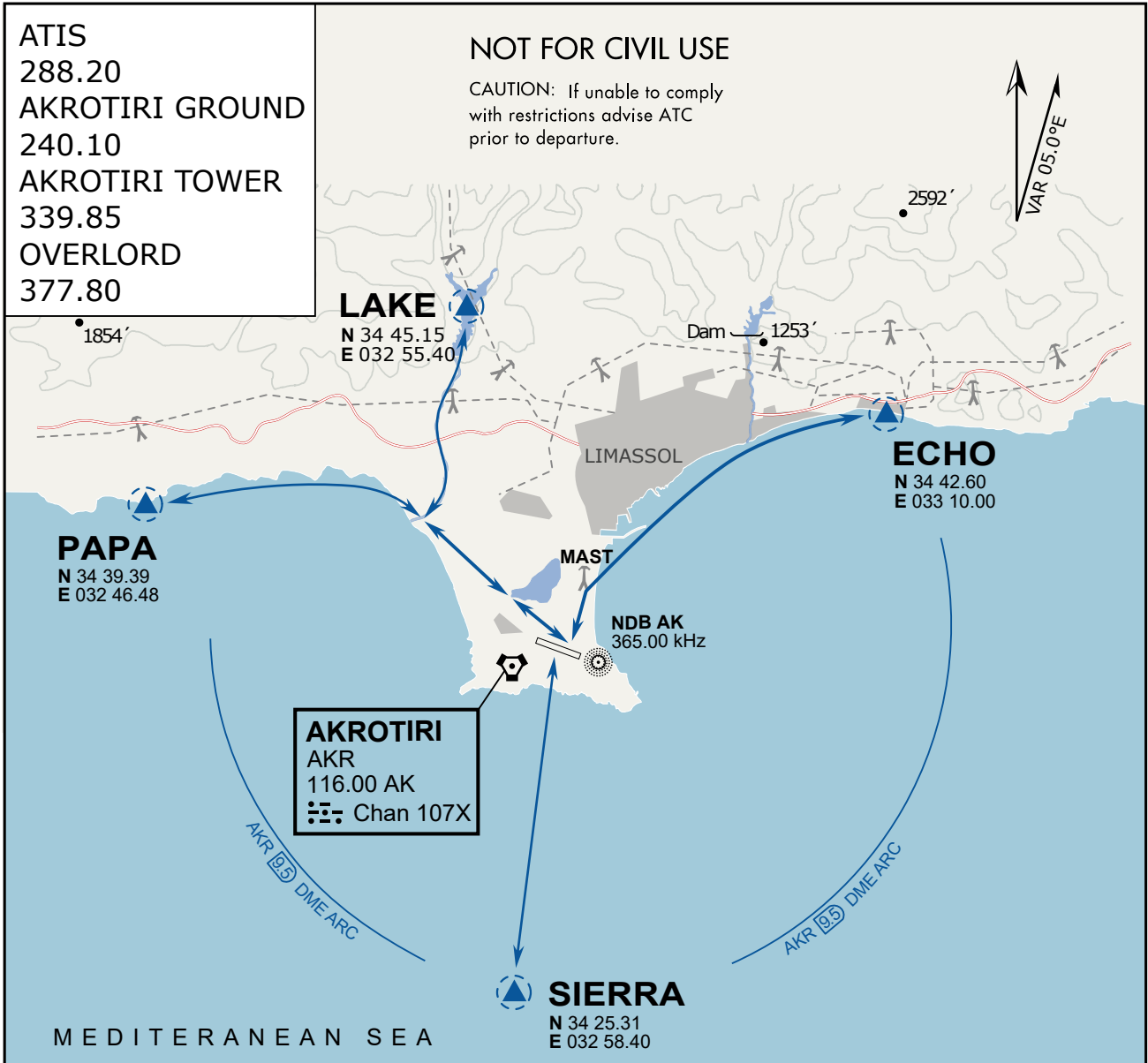
Stay at or below 500' AGL.

DEPARTURE

- ECHO: Via the 4 masts, along the coastline to EXIT.
- LAKE: Stay SOUTH WEST of the dry lake, to the river mouth, follow river to EXIT.
- PAPA: Stay SOUTH WEST of the dry lake, follow coastline to EXIT.
- SIERRA: Direct EXIT.

ARRIVAL

- LAKE: Follow river to coastline, then direct LCRA.
- PAPA: Follow coastline to rivermouth, then direct LCRA.
- ECHO: Follow coastline to the 4 masts, then to LCRA.
- SIERRA: Direct to LCRA.



ARR / DEP ROUTE DESCRIPTION

GENERAL

Stay at or below 500' AGL.

DEPARTURE

- ECHO: Via the 4 masts, along the coastline to EXIT.
- LAKE: Stay SOUTH WEST of the dry lake, to the river mouth, follow river to EXIT.
- PAPA: Stay SOUTH WEST of the dry lake, follow coastline to EXIT.
- SIERRA: Direct EXIT.

ARRIVAL

- LAKE: Follow river to coastline, then direct LCRA.
- PAPA: Follow coastline to rivermouth, then direct LCRA.
- ECHO: Follow coastline to the 4 masts, then to LCRA.
- SIERRA: Direct to LCRA.