

MISSION DATA CARD

OPORD		Callsign		Mission		Date/Time	
2821/2024		Monster 1		Training		152030APR24	
Task	CAS					Freq	
AO	Cape Pyla Bombing Range					132.15	
Departure				Recovery			
RWY10 SID				TAC 28			
#	Callsign	Pilot	IFF	TCN	LSR	NET	
-1	Monster 1-1	Toolface	1411	1Y	1611	21/01	
-2	Monster 1-2	Stoner	1412	64Y	1612	21/02	
-3	Monster 1-3	addiks	1413	64X	1613	21/03	
-4	Monster 1-4	Lenzi	1414	1X	1614	21/04	

LOADOUT

A/A	2xA9M			GUN	100% CM		
A/G	6xM82, 7M151			CHF	180		
POD	TGP, A184L			FLR	300		
TKS				FUEL	75%		

TOLD

	Takeoff	Target	Joker	Bingo	Land		
FUEL	8315						

AIRBASES

	Name	TCN	ATIS	GND	TWR	RWY	Elev	ILS
Dep	Akrotiri AFB	107X	288.2	240.1	339.85	28	62	109.7
Arr	Akrotiri AFB	107X	288.2	240.1	339.85	28	62	109.7
Div	Paphos Internationl	79X	127.3		353.8	29	40	108.9

FLIGHTPLAN

#	Name	Navaid/Coords/DME	ALT	TOT
1	ECHO	N34 42.600 E033 10	4000	
2	strafe pit west	N34 57.047 E033 51.239		
3	strafe pit east	N34 57.085 E033 51.111		
4	LAKE	N34 45.150 E032 55.400	5000	
5	PAPA	N34 39.390 E032 46.480	3000	

COMMS

Radio	Usage
1	132.15
2	2, 4, 16, 2, 4
3	32,00

OTHER FLIGHTS

Callsign	Mission	Airframe	Freq	TCN	Grpld	Laser
BamBam 3	Training	4x AH-64D	133.5	1/64		161X
AO		Task				

RADIO CHANNELS

#	Freq	Name
1		Flight/Squadron specific
2	288.2	Akrotiri ATIS
3	240.1	Akrotiri Ground
4	339.85	Aktrotiri Tower
5	335.05	Akrotiri Approach
6	360.1	Incirlik Tower
7	371.35	Incirlik Ground
8	377.475	Incirlik ATIS
9		No Preset
10	127.3	Paphos ATIS
11	353.8	Paphos Tower
12	304.0	CVN-73 George Washington
13	302.0	LHA-1 Tarawa
14	259.0	CV-59 Forrestal
15		No Preset
16	377.8	Overlord
17	265.0	KC-135 Texaco-1 medium/slow
18	319.8	KC-135 Arco-1
19	360.8	KC-135MPRS Arco-2
20	256.0	S-3B Recovery Tanker

RAMROD

0	1	2	3	4	5	6	7	8	9
G	O	D	F	A	T	H	E	R	S

KTC 1400 C

	0	1	2	3	4	5	6	7	8	9
A	ALXG	UPN	RQK	FW	VD	HOB	MT	IE	YC	JS
B	DCYO	MNI	HGR	AL	TE	PSX	VJ	FU	WB	QK
C	ECRF	PAV	QNX	YM	UW	BOT	DS	GJ	KL	HI
D	GEJT	NKR	IAP	QL	OB	SYD	WX	FM	UC	HV
E	GXFM	CDN	SYE	BJ	VA	QLW	TI	UK	RP	OH
F	CIVY	RDS	TAQ	FP	GK	LUB	EM	JX	OH	NW
G	AXLH	CFS	QYJ	DK	UT	GWN	VB	RP	IO	ME
H	TPAX	FDM	BKH	GC	NR	LYI	JE	WO	UQ	VS
I	NFVJ	DQC	IXE	GH	RL	YSW	OM	AP	KU	BT
J	NYOB	KHX	WDM	PL	QG	TAU	IJ	VS	RE	FC
K	RFAO	TLY	KBU	NP	SC	HVD	GW	EX	MJ	QI
L	XCBF	ULY	SMP	VA	QK	OHG	DN	EJ	WR	TI
M	DSCP	EVL	KWT	GN	JF	XRU	MB	QO	AH	YI
N	MRKS	WOJ	HYE	IP	UL	GBF	DT	NV	AX	CQ
O	FSHL	WBK	XYV	QM	CN	RTO	AP	JI	ED	UG
P	WASB	YNF	QMX	UD	OL	JVH	IK	TC	EP	GR
Q	LXND	FQI	CER	BA	VK	WUM	SH	JO	PG	YT
R	WPFY	MAK	HJT	OE	NG	LRQ	SC	XI	UD	VB
S	XNUM	TPV	OGI	JF	KQ	ADL	SE	CR	WY	BH
T	NAKR	LGT	MYW	BV	SQ	CPD	EH	XI	JO	FU
U	TSDE	AWM	JPN	KI	CX	FOH	GU	QY	VR	BL
V	RAHF	DBT	CPL	WJ	GO	EVQ	IN	UX	YK	SM
W	GRMV	QBW	STJ	HI	YE	XLK	FP	OD	CN	UA
X	QDSB	EMX	RAO	LI	WT	VKU	YN	GF	HC	PJ
Y	DGRP	KAL	HNS	YB	VU	TWJ	QC	OX	EM	IF

NAVAIDS

Id	Name	Channel	Position	Elevation
DAN	Incirlik	21	N37 00.950 E035 26.883	243
AKR	Akrotiri	107	N34 34.765 E032 57.769	147
PHA	Paphos	79	N34 42.997 E032 28.963	35
RMD	Ramat David	84	N32 39.892 E035 11.265	136
OS66	Kuweires Military Aviation Institute	36	N36 11.362 E037 34.226	1200

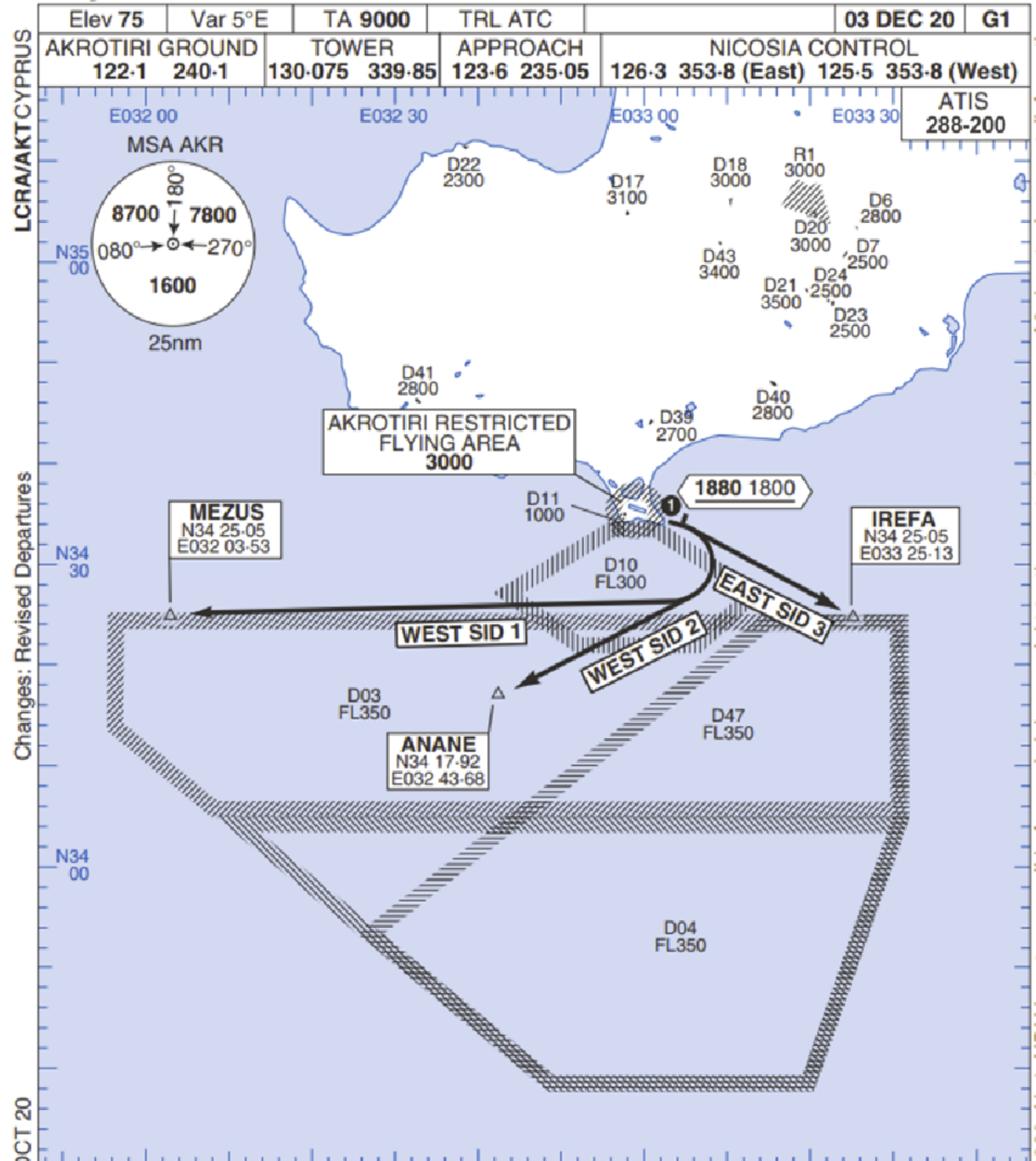
**FOR DCS
 USE ONLY**



ATIS	AKROTIRI GND	AKROTIRI TWR	OVERLORD CONTROL	TACAN	FIELD ELEVATION
288.20 MHz	240.10 122.10	339.85 130.075	377.8	AKR 107X	75 [ft] 23 [m]

Rwy 10 OMNIDIRECTIONAL DEPARTURES

AKROTIRI



LCRA/AKTCYPRUS

Changes: Revised Departures

No1 AIDU Last Amended 06 OCT 20

© UK MOD Crown Copyright 2020. No1 AIDU is not responsible for, and claims no right to, the content or accuracy of 3rd party documents/information.

Elev 75	Var 5°E	TA 9000	TRL ATC		03 DEC 20	G1
AKROTIRI GROUND 122.1 240.1		TOWER 130.075 339.85		APPROACH 123.6 235.05		NICOSIA CONTROL 126.3 353.8 (East) 125.5 353.8 (West)
						ATIS 288-200

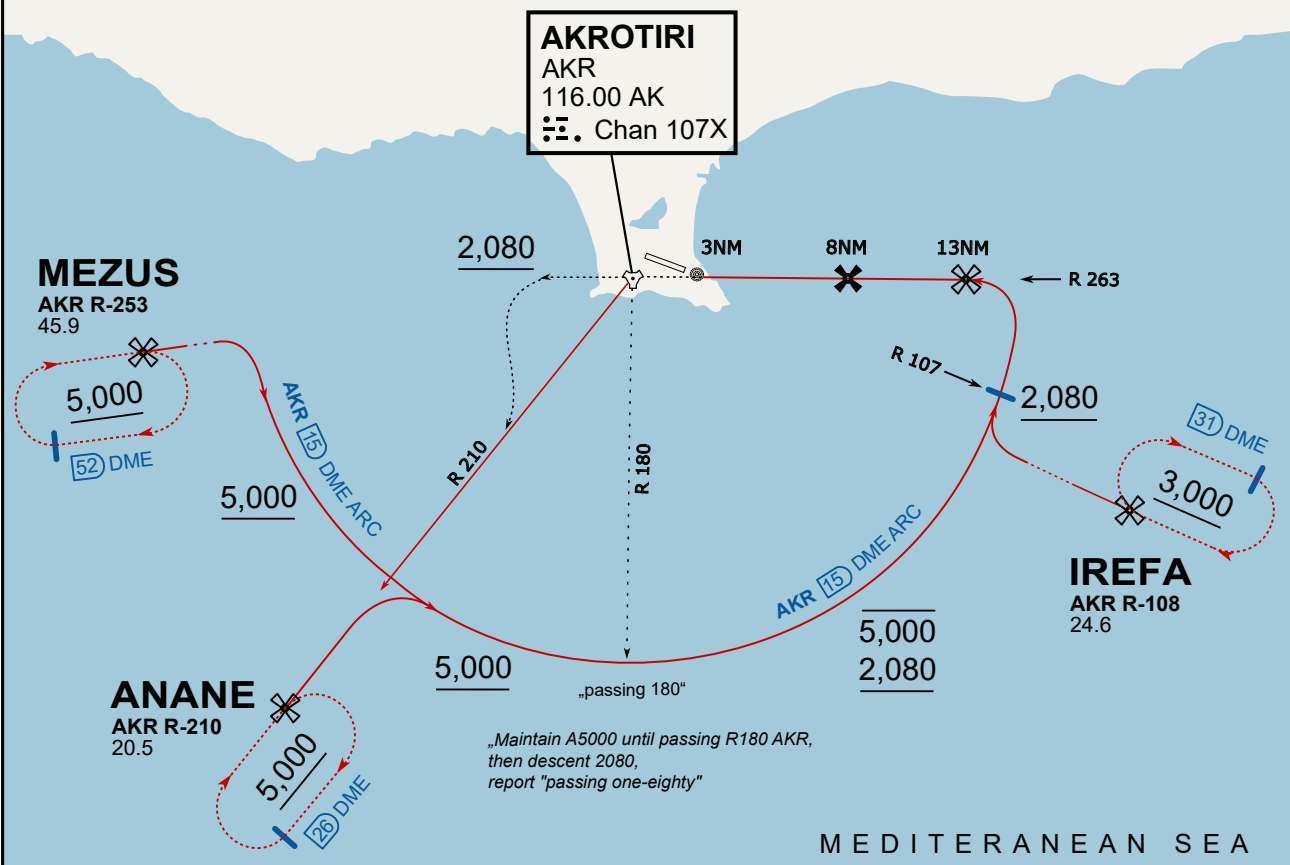
- 1. Minimum climb gradient 7% to 1880 1800 for obstacle and operational purposes.
- 2. No turns before DER.
- 3. Turns to north of Rwy **prohibited**.
- 4. Acft unable to locate MEZUS/ANANE/IREFA should request radar vectors from ATC.

SID	RWY	ROUTEING (Including Mnm Noise Routes)
WEST SID 1	10 103°M	Ahead on Rwy Tr to 1880 1800, then right direct to MEZUS. SID terminates at 9000.
WEST SID 2		Ahead on Rwy Tr to 1880 1800, then right direct to ANANE. SID terminates at 9000.
EAST SID 3		Ahead on Rwy Tr to 1880 1800 then right direct to IREFA. SID terminates at 9000.

ATIS
 288.200
AKROTIRI GROUND
 122.100
AKROTIRI TOWER
 339.850
APP (OVERLORD)
 377.800

NOT FOR CIVIL USE

CAUTION: If unable to comply with restrictions advise ATC prior to departure.



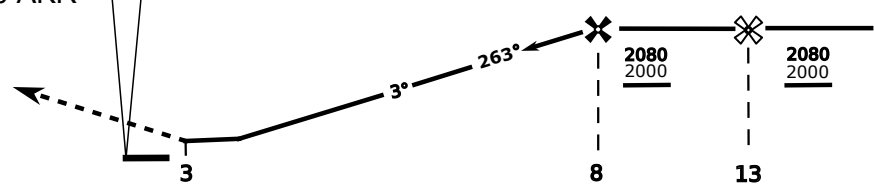
„Maintain A5000 until passing R180 AKR, then descent 2080, report "passing one-eighty"“

MEDITERANEAN SEA

On Track 263° climb A 4.000'. passing 2.080' (2.000' AAL) turn left and intercept R-210 AKR to ANANE. Enter ANANE Holding.

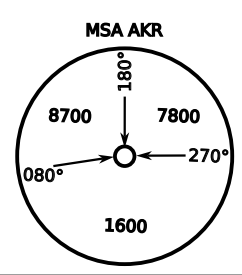


DME AKR	7	6	5	4
ALT	1780	1460	1140	820



THR Elev 74ft DME AKR

CAT	TAC	CIRCLE	GS (kts)	80	120	150	180	210	
A	500(430)	680 (610) 2000m	FAF - MAPt (4.1NM)	3:06	2:03	1:38	1:22	1:10	
B	1300m		RoD (fpm)	420	640	800	950	1110	
C	780 (710) 2600m	N/A	- CIRCLING PROHIBITED N of Rwy						
D			780 (710) 3600m	- final track is offset 20° right of RCL and Intcp 1.1NM before THR					
E			1380 (1310) 5000m	- when established on final contact tower					
			- Timing not Auth to define MAPt						



NOT AVAILABLE

NOT AVAILABLE