

MISSION DATA CARD

OPORD		Callsign		Mission		Date/Time		
2820/2024		Raptor		Training		141500APR24		
Task	DEAD SA-10 training range refresh					Freq		
AO						134.0		
Departure				Recovery				
RWY10 VFR				RWY10 VFR				
#	Callsign		Pilot		IFF	TCN	LSR	NET
-1	Raptor-1		Void		1601	1Y	1621	
-2	Raptor-2		Jinx		1602	64Y	1622	

LOADOUT

A/A	2xA9X				GUN	100% SAPHEI	
A/G	2xC105, 5xC97				CHF	60	
POD	HTS, A184L, TGP				FLR	60	
TKS	FT300				FUEL	100%	

TOLD

	Takeoff	Target	Joker	Bingo	Land
FUEL	9166	8000	3000	1500	500

AIRBASES

	Name	TCN	ATIS	GND	TWR	RWY	Elev	ILS
Dep	Akrotiri AFB	107X	288.2	240.1	339.85	28	62	109.7
Arr	Akrotiri AFB	107X	288.2	240.1	339.85	28	62	109.7
Div	Paphos Internationl	79X	127.3		353.8	29	40	108.9

FLIGHTPLAN

#	Name	Navaid/Coords/DME	ALT	TOT
1	ECHO	N34 42.600 E033 10	5000	
2	SA-10		10000	
3	PAPA	N34 39.390 E032 46.480	5000	

RADIO CHANNELS

#	Freq	Name
1		Flight/Squadron specific
2	288.2	Akrotiri ATIS
3	240.1	Akrotiri Ground
4	339.85	Aktrotiri Tower
5	335.05	Akrotiri Approach
6	360.1	Incirlik Tower
7	371.35	Incirlik Ground
8	377.475	Incirlik ATIS
9		No Preset
10	127.3	Paphos ATIS
11	353.8	Paphos Tower
12	304.0	CVN-73 George Washington
13	302.0	LHA-1 Tarawa
14	259.0	CV-59 Forrestal
15		No Preset
16	377.8	Overlord
17	265.0	KC-135 Texaco-1 medium/slow
18	319.8	KC-135 Arco-1
19	360.8	KC-135MPRS Arco-2
20	256.0	S-3B Recovery Tanker

RAMROD

0	1	2	3	4	5	6	7	8	9
H	O	L	S	T	E	R	I	N	G

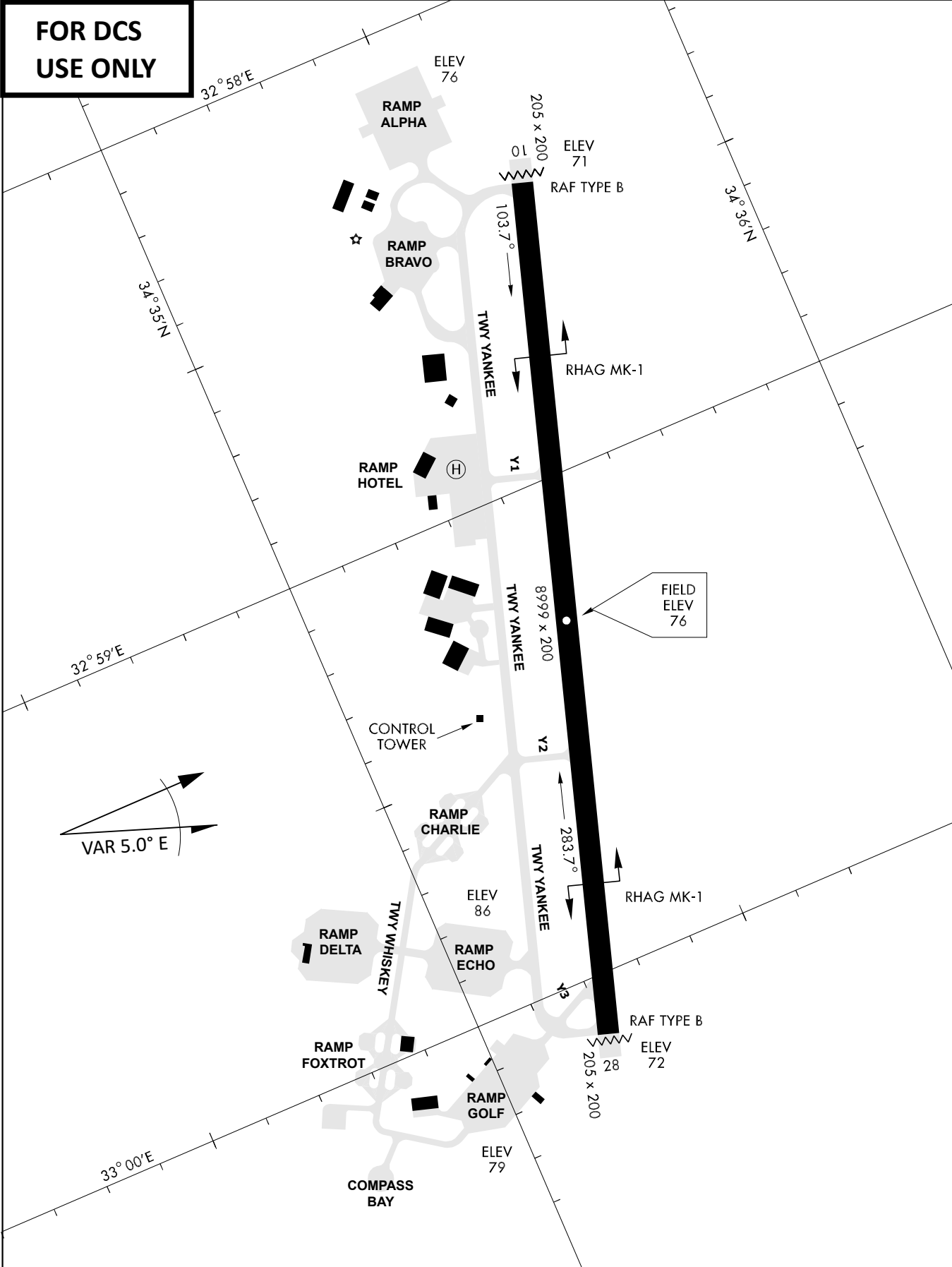
KTC 1400 C

	0	1	2	3	4	5	6	7	8	9
A	FVKD	AXR	YTW	OS	PQ	NHM	CL	UB	GJ	EI
B	YNFA	DSP	WJG	CB	EI	HUK	QM	VR	TL	OX
C	OUPS	YBI	WFN	HC	QM	ATL	XR	EG	JK	VD
D	CABW	GFY	DUQ	OI	ES	RTJ	VK	HN	XL	MP
E	GTDH	VOU	XSJ	ML	RI	BWK	YC	FN	PA	EQ
F	HWMJ	NST	XBP	VY	CE	QID	LF	GR	UA	KO
G	BUSM	HRV	PGD	NL	IW	OFA	TY	CE	XQ	JK
H	RNEB	HXO	VLT	MG	WJ	KYS	FC	DU	AQ	IP
I	LAYK	VHQ	FSM	RG	CP	JNT	WE	DO	UB	IX
J	ADHY	XUI	GEM	BT	CJ	FSR	WL	OK	NV	QP
K	IBET	YQG	HRM	NL	UF	JDX	OA	SP	KW	VC
L	WMOI	RGY	TJS	XB	VP	EKU	LQ	FA	HN	DC
M	LQDT	SVU	PBX	YI	JK	MRW	GE	FA	CO	HN
N	TMCW	OQU	BLV	XR	PS	FJH	DN	YG	EI	AK
O	XYNG	KCQ	SJB	UO	FP	RDI	LM	WH	TA	EV
P	WLGB	VUY	KNJ	MA	QP	SXF	DT	HE	OC	RI
Q	ILGF	YTW	RJX	DV	OH	BNM	KQ	SC	UE	PA
R	XLDJ	AFC	WTO	HP	UM	VNG	BQ	RS	KE	IY
S	MOXN	CJK	IEW	AH	UP	QBL	YF	SV	DT	GR
T	GYIE	DMK	WNA	OL	CR	PHB	SU	XF	QT	JV
U	KLXT	RAU	MPF	OC	IY	JEV	GW	QD	SH	NB
V	GOFP	YUI	LDH	KN	MQ	WJA	RC	TB	EV	SX
W	GXPA	BKQ	VLC	WD	MO	FIN	TR	EJ	US	YH
X	PAIN	KQX	GSC	BY	LJ	DHO	VW	UR	ME	TF
Y	SGWP	VKL	FMD	TE	IN	BYC	HU	RX	OA	QJ

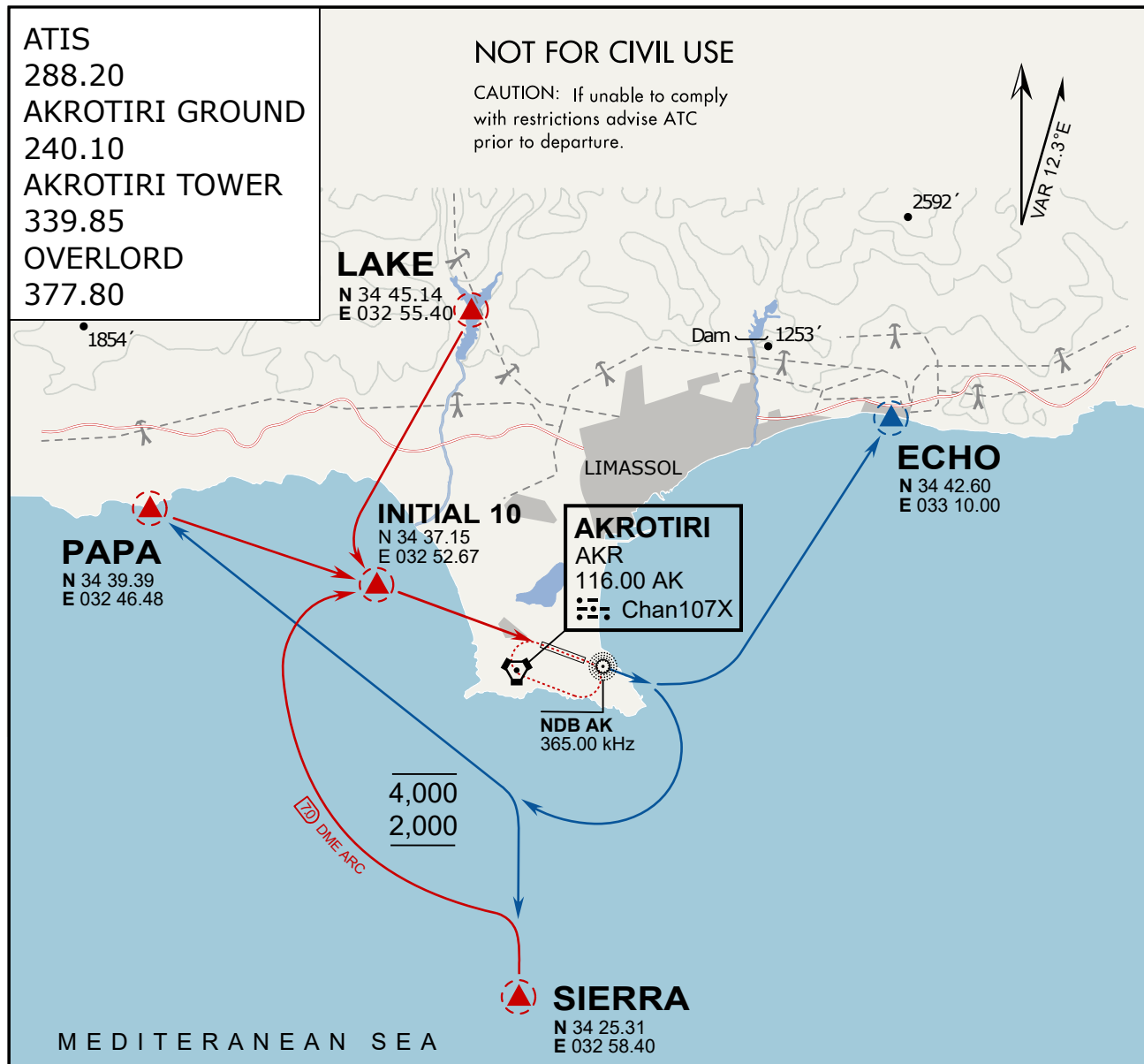
NAVAIDS

Id	Name	Channel	Position	Elevation
DAN	Incirlik	21	N37 00.950 E035 26.883	243
AKR	Akrotiri	107	N34 34.765 E032 57.769	147
PHA	Paphos	79	N34 42.997 E032 28.963	35
RMD	Ramat David	84	N32 39.892 E035 11.265	136
OS66	Kuweires Military Aviation Institute	36	N36 11.362 E037 34.226	1200

**FOR DCS
 USE ONLY**



ATIS	AKROTIRI GND	AKROTIRI TWR	OVERLORD CONTROL	TACAN	FIELD ELEVATION
288.20 MHz	240.10 122.10	339.85 130.075	377.8	AKR 107X	75 [ft] 23 [m]



ARR / DEP ROUTE DESCRIPTION

ARRIVAL GENERAL

Pass Entry at 5.000' or below. Overhead Brake RWY 10: pass INITIAL 10 at 2.000' MSL.
Straight-in RWY 10 : pass INITIAL 1.500' or below.

ARR RWY10 PAPA / LAKE: Direct initial.

ARR RWY10 SIERRA: Intercept ARC 7 of AKR to INITIAL 10.

ARR ECHO: no ENTRY.

DEPARTURE GENERAL

Pass Departure end of runway at 1.000' AGL or below. Keep RWY heading until coastline.

DEP RWY10 ECHO: Direct EXIT.

DEP RWY10 SIERRA: Climbing right turn, intercept R180 AKR to Sierra.

DEP RWY10 PAPA: Climbing right turn until R180 AKR, then direct Papa

DEP LAKE: no EXIT.

ATIS

288.20

AKROTIRI GROUND

240.10

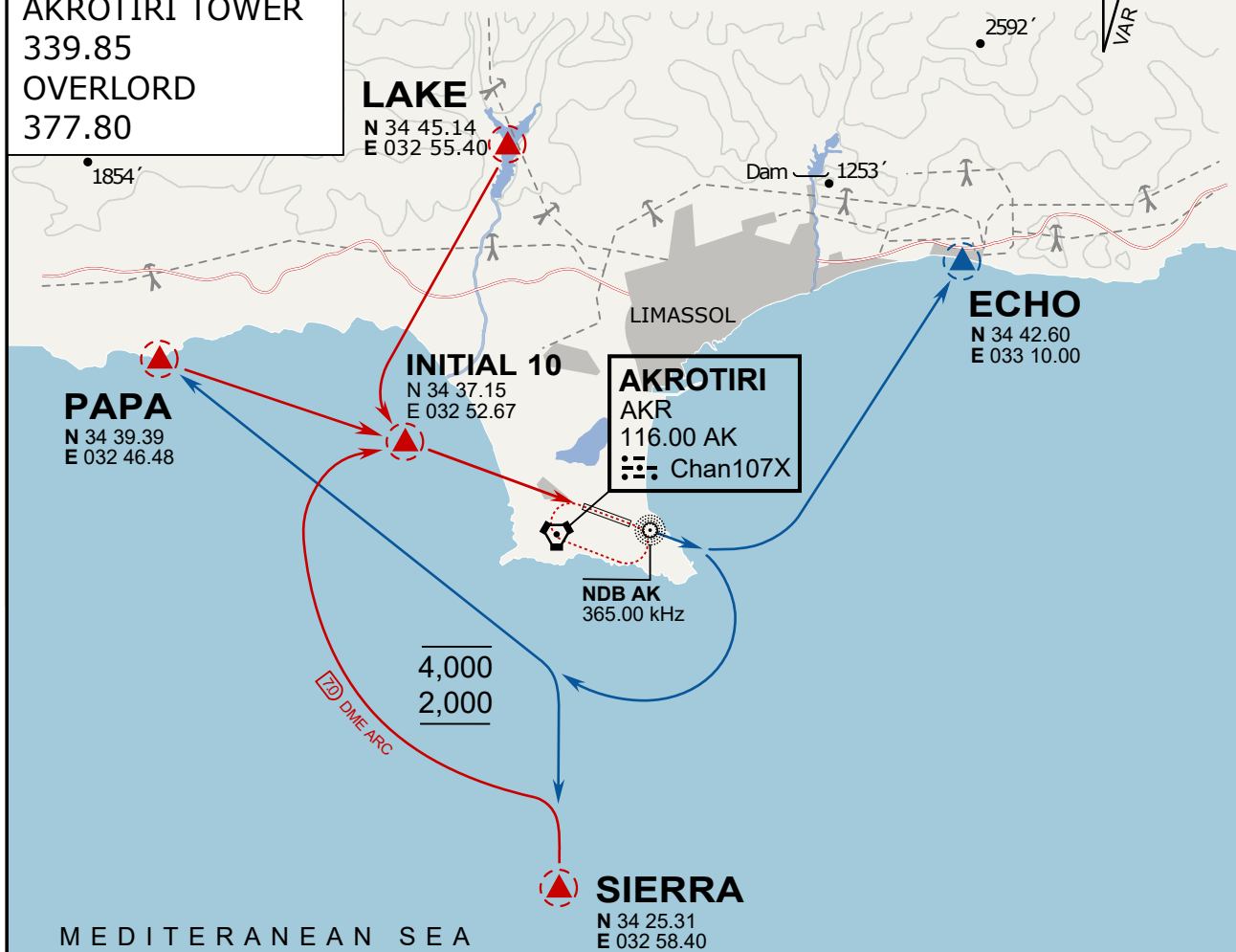
AKROTIRI TOWER

339.85

OVERLORD

377.80

NOT FOR CIVIL USE

CAUTION: If unable to comply
with restrictions advise ATC
prior to departure.

ARR / DEP ROUTE DESCRIPTION

ARRIVAL GENERAL

Pass Entry at 5.000' or below. Overhead Brake RWY 10: pass INITIAL 10 at 2.000' MSL.
Straight-in RWY 10 : pass INITIAL 1.500' or below.

ARR RWY10 PAPA / LAKE: Direct initial.

ARR RWY10 SIERRA: Intercept ARC 7 of AKR to INITIAL 10.

ARR ECHO: no ENTRY.

DEPARTURE GENERAL

Pass Departure end of runway at 1.000' AGL or below. Keep RWY heading until coastline.

DEP RWY10 ECHO: Direct EXIT.

DEP RWY10 SIERRA: Climbing right turn, intercept R180 AKR to Sierra.

DEP RWY10 PAPA: Climbing right turn until R180 AKR, then direct Papa

DEP LAKE: no EXIT.

NOT AVAILABLE

NOT AVAILABLE