

MISSION DATA CARD

OPORD		Callsign		Mission		Date/Time		
2817/2024		Raptor		SEAD		100000APR24		
Task	SEAD Training Eastern Akrotiri					Freq		
AO						134.0		
Departure				Recovery				
RWY10 VFR				RWY10 VFR				
#	Callsign		Pilot		IFF	TCN	LSR	NET
-1	Raptor-1		Butcher		1611	1Y	1621	

LOADOUT

A/A	3xA120C, A9X				GUN	100% SAPHEI	
A/G	2xA88C				CHF	90	
POD	HTS, A131				FLR	30	
TKS	2xFT300				FUEL	100%	

TOLD

	Takeoff	Target	Joker	Bingo	Land
FUEL	11169				

AIRBASES

	Name	TCN	ATIS	GND	TWR	RWY	Elev	ILS
Dep	Akrotiri AFB	107X	288.2	240.1	339.85	28	62	109.7
Arr	Akrotiri AFB	107X	288.2	240.1	339.85	28	62	109.7
Div	Paphos Internationl	79X	127.3		353.8	29	40	108.9

FLIGHTPLAN

#	Name	Navaid/Coords/DME	ALT	TOT
1	ECHO	N34 42.600 E033 10	5000	
2	Papa	N34 39.390 E032 46.480	5000	
3	INITIAL 10	N34 37.150 E032 52.670	3000	

RADIO CHANNELS

#	Freq	Name
1		Flight/Squadron specific
2	288.2	Akrotiri ATIS
3	240.1	Akrotiri Ground
4	339.85	Aktrotiri Tower
5	335.05	Akrotiri Approach
6	360.1	Incirlik Tower
7	371.35	Incirlik Ground
8	377.475	Incirlik ATIS
9		No Preset
10	127.3	Paphos ATIS
11	353.8	Paphos Tower
12	304.0	CVN-73 George Washington
13	302.0	LHA-1 Tarawa
14	259.0	CV-59 Forrestal
15		No Preset
16	377.8	Overlord
17	265.0	KC-135 Texaco-1 medium/slow
18	319.8	KC-135 Arco-1
19	360.8	KC-135MPRS Arco-2
20	256.0	S-3B Recovery Tanker

RAMROD

0	1	2	3	4	5	6	7	8	9
H	O	S	P	I	T	A	B	L	E

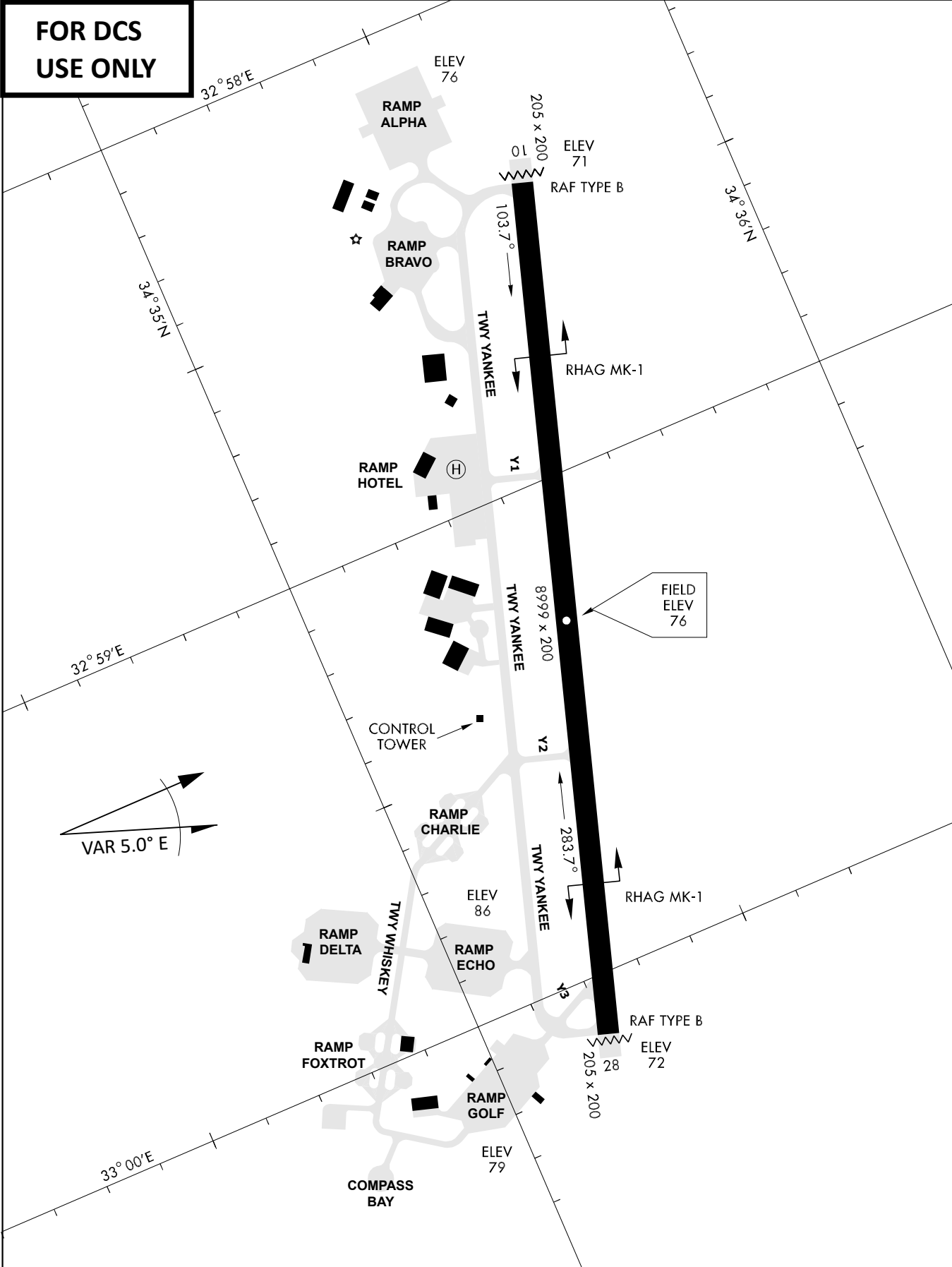
KTC 1400 C

	0	1	2	3	4	5	6	7	8	9
A	FPQX	LRN	SVM	DG	KJ	EH	UW	BY	TO	CA
B	CYDU	RBE	JFT	VW	OQ	LAM	XI	NP	SH	KG
C	WMTY	XLE	UAB	VQ	JG	HNO	SI	CK	PD	RF
D	BTXC	PNG	EYJ	OL	DF	RHA	KU	IM	QW	VS
E	KGCL	IYF	NQR	WS	AU	BXJ	VO	EM	HP	TD
F	MRBJ	VFU	ECD	YH	KA	SPW	QL	GX	NI	TO
G	VGHL	ANB	TFM	YQ	SW	PKX	DR	JO	EU	IC
H	LPKH	TVS	FWD	XG	NU	QBC	RO	JA	ME	YI
I	XCPW	BQI	GFM	DU	RN	EKT	LV	HY	OA	SJ
J	LKRH	ONC	SQP	XF	BV	JYA	GW	EU	MT	DI
K	UECS	QNB	PVA	OH	FL	KMG	JR	WX	IT	YD
L	QCDG	FKI	PAW	HY	TO	USL	BV	EX	NJ	MR
M	NCIQ	KGV	YDP	SL	UJ	ARX	FO	EB	WT	HM
N	GHRK	BVM	DUT	EP	JO	QSF	AX	YI	NC	LW
O	HCNA	YXJ	EUS	DO	VQ	TRW	PG	IM	LF	BK
P	USJX	YIW	MEG	PT	KD	CRB	QN	OH	AL	VF
Q	UBYQ	MWC	RTK	OE	PD	JSI	FX	VG	HN	LA
R	XSIH	BNA	CKV	MF	OD	JRG	EU	QW	TY	PL
S	FIPE	XSQ	TLA	RG	BJ	CUW	VH	KO	YD	NM
T	RGWD	UHI	LXY	MS	PN	TQC	OF	VK	AB	EJ
U	HFEM	ARI	CVL	YJ	QU	WON	TD	PK	SG	XB
V	NRMD	ILO	GYS	TK	PX	BQV	UA	HF	WJ	EC
W	HBYQ	VDP	XCA	NU	WR	JSF	ML	IK	GT	EO
X	SAVR	NQH	FYP	GW	DB	JKT	CO	MI	UE	XL
Y	HOLW	BRG	TEV	XK	AN	QFP	SI	CJ	YM	UD

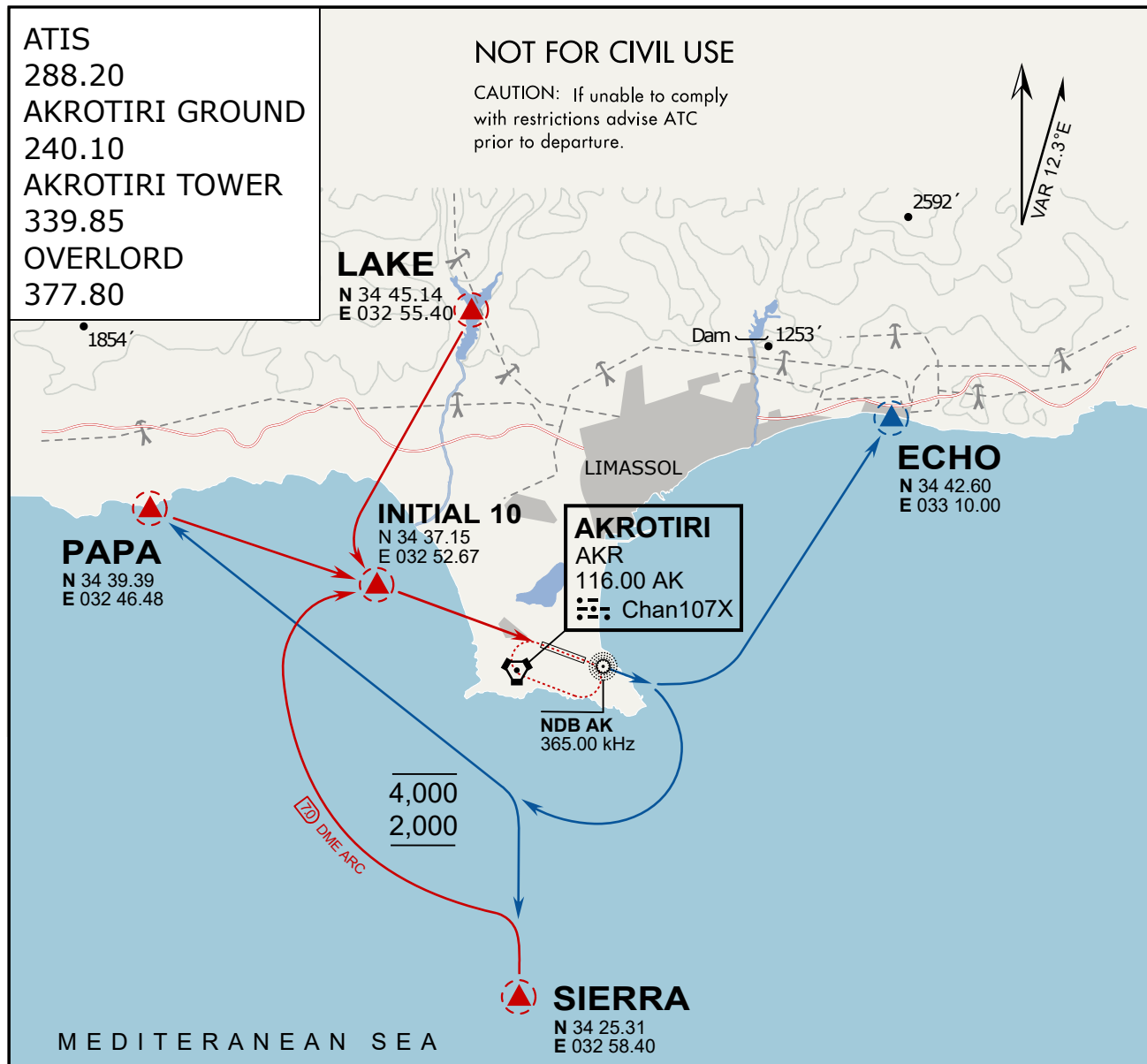
NAVAIDS

Id	Name	Channel	Position	Elevation
DAN	Incirlik	21	N37 00.950 E035 26.883	243
AKR	Akrotiri	107	N34 34.765 E032 57.769	147
PHA	Paphos	79	N34 42.997 E032 28.963	35
RMD	Ramat David	84	N32 39.892 E035 11.265	136
OS66	Kuweires Military Aviation Institute	36	N36 11.362 E037 34.226	1200

**FOR DCS
 USE ONLY**



ATIS	AKROTIRI GND	AKROTIRI TWR	OVERLORD CONTROL	TACAN	FIELD ELEVATION
288.20 MHz	240.10 122.10	339.85 130.075	377.8	AKR 107X	75 [ft] 23 [m]



ARR / DEP ROUTE DESCRIPTION

ARRIVAL GENERAL

Pass Entry at 5.000' or below. Overhead Brake RWY 10: pass INITIAL 10 at 2.000' MSL.
Straight-in RWY 10 : pass INITIAL 1.500' or below.

ARR RWY10 PAPA / LAKE: Direct initial.

ARR RWY10 SIERRA: Intercept ARC 7 of AKR to INITIAL 10.

ARR ECHO: no ENTRY.

DEPARTURE GENERAL

Pass Departure end of runway at 1.000' AGL or below. Keep RWY heading until coastline.

DEP RWY10 ECHO: Direct EXIT.

DEP RWY10 SIERRA: Climbing right turn, intercept R180 AKR to Sierra.

DEP RWY10 PAPA: Climbing right turn until R180 AKR, then direct Papa

DEP LAKE: no EXIT.

ATIS
 288.20
 AKROTIRI GROUND
 240.10
 AKROTIRI TOWER
 339.85
 OVERLORD
 377.80

NOT FOR CIVIL USE

CAUTION: If unable to comply with restrictions advise ATC prior to departure.



LAKE

N 34 45.14
E 032 55.40

Dam 1253'

2592'

1854'

LIMASSOL

ECHO

N 34 42.60
E 033 10.00

INITIAL 10

N 34 37.15
E 032 52.67

AKROTIRI

AKR

116.00 AK

Chan107X

NDB AK
365.00 kHz

PAPA

N 34 39.39
E 032 46.48

4,000
2,000

DME ARC

SIERRA

N 34 25.31
E 032 58.40

MEDITERRANEAN SEA

ARR / DEP ROUTE DESCRIPTION

ARRIVAL GENERAL

Pass Entry at 5.000' or below. Overhead Brake RWY 10: pass INITIAL 10 at 2.000' MSL. Straight-in RWY 10 : pass INITIAL 1.500' or below.

ARR RWY10 PAPA / LAKE: Direct initial.

ARR RWY10 SIERRA: Intercept ARC 7 of AKR to INITIAL 10.

ARR ECHO: no ENTRY.

DEPARTURE GENERAL

Pass Departure end of runway at 1.000' AGL or below. Keep RWY heading until coastline.

DEP RWY10 ECHO: Direct EXIT.

DEP RWY10 SIERRA: Climbing right turn, intercept R180 AKR to Sierra.

DEP RWY10 PAPA: Climbing right turn until R180 AKR, then direct Papa

DEP LAKE: no EXIT.

vJaBoG32 ETTR NAV CHART

NOT AVAILABLE

NOT AVAILABLE