

MISSION DATA CARD

OPORD		Callsign		Mission		Date/Time	
2815/2024		Nazgul 6		CAP		112000APR24	
Task	CAP					Freq	
AO	ATO 704/705/706? 30B35					262.45	
Departure				Recovery			
none				none			
#	Callsign	Pilot	IFF	TCN	LSR	NET	
-1	Nazgul 6-1	Striver/Uta	1161	29X	1661	40/01	
-2	Nazgul 6-2	Tank/TaB	1162	92X	1662	40/02	
-3	Nazgul 6-3	Repsus/Lempo	1163	92Y	1663	40/03	
-4	Nazgul 6-4	Razorback	1164	29Y	1664	40/04	

LOADOUT

A/A	6xA120C, 2xA9M			GUN	100% SAPHEI
A/G				CHF	120
POD	TGT, NAV			FLR	60
TKS	3xFT610			FUEL	100%

TOLD

	Takeoff	Target	Joker	Bingo	Land
FUEL	34483				

AIRBASES

	Name	TCN	ATIS	GND	TWR	RWY	Elev	ILS
Dep	King Abulla II. AFB			121.9	118.0	31	2291	
Arr	King Abulla II. AFB			121.9	118.0	31	2291	
Div	Akrotiri AFB	107X	288.2	240.1	339.85	28	62	109.7

FLIGHTPLAN

#	Name	Navaid/Coords/DME	ALT	TOT
1	CAP Raptor 2	N32 45 E035 24	35000	
2	CAP Nazgul 6	N33 29 E034 02	35000	
3	CAP Tiger 2	N34 05 E034 41	15000	
4	CAP NE	N34 33 E038 20	1306	
5	CAP NW	N33 50 E035 29	39	
6	CAP SW	N33 06 E035 08	378	
7	CAP SE	N33 41 E037 12	2274	
8	B1	N33 20 22.140 E035 15 07.260	26	
9	B2	N33 19 25.020 E035 15 51.720	36	
10	B3	N33 18 31.020 E035 26 14.760	325	
11	B4	N33 20 32.580 E035 32 35.160	781	
12	Muwafucker X85	N31 50.1 E036 46.1	781	

COMMS

Radio	Usage
1	262.45
2	121.9 (GND) / 118.0 (TWR) / 377.8 (16) / 252.85
3	377.9 KI AWACS (progr. auf CH15)

NOTES

=====TASKING=====

Nazgul 6: CAP

=====SEQUENCE=====

RCVRY King Abdulla II AFB
118.0 MHz Sunshine Traffic
121.9 MHz Sunshine Ground
TCN 32X

MAX PWR T/O

AB Climb 400KCAS and M.9
climb & cruise to CAP with GATE (until centertank is empty)
onStation CAP A
hot 090°M A35 15nm LH Cruise
Standard Gameplan H1 / HS + Reactions / EL2

Muwafucker AB

250.4 MHz Traffic
336.6 MHz Ground
TCN 85X

=====OTHER FLIGHTS=====

TIGER 2 (Pixelface) - CAP North
RAPTOR 2 (XXX) - CAP South

TIGER 1 (Ghost) - Bridge strike
RAPTOR 1 (Void) - SEAD

MONSTER 1 (Toolface) - KB Alfa
HAWG 2 (Yurgon) - KB Bravo
T-REX 2 (G-Rex) - KB Charlie

=====AUTHENTIFICATION=====

via DRYAD (Buchstaben von AWACS sind Zeile und Buchstabe, Antwort ist der darunter)

=====FUEL=====

Bingo: 4.000 lbs

=====NAV GRID=====

N 32°48.806' E 34°59.182' (Haifa)

=====WEATHER=====

Time : 0700J
Clouds : SCT095
QNH 29.94
Temp: 20 °C

Wind : 33ft 053/4, 1600ft 053/8, 6600ft 056/4, 26000ft 085/8
wind dir correct

SUPPORT**Tanker**

Callsign	TCN	Freq	ALT	TAS
TEXACO 1	71Y	265.0	FL170	300
	Pos	TEXACO1: (N3657 E03434)		
ARCO 1	22Y	319.8	FL222	400
	Pos	ARCO1: (N3701 E03457)		
SHELL 3	93Y	278.75	FL170	215
	Pos	SHELL3: (N3436 E03419)		

AWACS

Callsign	Freq	ALT	Pos
OVERLORD2	377.8	FL320	N3713 E03643 - N3714 E03749

OTHER FLIGHTS

Callsign	Mission	Airframe	Freq	TCN	Grpld	Laser
Raptor 1	SEAD	3x F-16C	134.0	1/64	1	162X
AO		Task	ATO 709			
Tiger 2	CAP	4x F/A-18C	264.25	1/64		172X
AO	ATO 704/705/706 28B30	Task	CAP			
Monster 1	CAS	2x A-10C	132.15	1/64	21	161X
AO	ATO702 KB Alpha 00B17	Task	CAS			
Hawg 2	CAS	2x A-10C	132.35	29/92	21	162X
AO	ATO702 KB Bravo 00B18	Task	CAS			
T-Rex 3	CAS	2x A-10C	132.25	1/64	25	165X
AO	ATO703 KB Delta 00B21	Task	CAS			
Beast 4	CAS	2x A-10C	132.45	1/64	24	164X
AO	ATO702 KB Bravo 00B18	Task	CAS			
Nasty 2	SCAR	2x AH-64D	133.5	1/64		155X
AO	KB Echo	Task				
Raptor 2	CAP	4x F-16C	134.5	29/92	40	166X
AO	ATO 705 25B35	Task	CAP			
Sandy 1	JTAC	1x Ground	35.35	1/64		170X
AO		Task				

RADIO CHANNELS

#	Freq	Name
1		Flight/Squadron specific
2	288.2	Akrotiri ATIS
3	240.1	Akrotiri Ground
4	339.85	Aktrotiri Tower
5	335.05	Akrotiri Approach
6	360.1	Incirlik Tower
7	371.35	Incirlik Ground
8	377.475	Incirlik ATIS
9		No Preset
10	127.3	Paphos ATIS
11	353.8	Paphos Tower
12	304.0	CVN-73 George Washington
13	302.0	LHA-1 Tarawa
14	259.0	CV-59 Forrestal
15		No Preset
16	377.8	Overlord
17	265.0	KC-135 Texaco-1 medium/slow
18	319.8	KC-135 Arco-1
19	360.8	KC-135MPRS Arco-2
20	256.0	S-3B Recovery Tanker

RAMROD

0	1	2	3	4	5	6	7	8	9
F	L	A	M	I	N	G	O	E	S

KTC 1400 C

	0	1	2	3	4	5	6	7	8	9
A	RLPI	XYJ	ENH	MT	VS	CKO	AF	DG	WB	QU
B	NADQ	EPK	UTJ	GL	XH	CYW	RV	IM	FB	OS
C	JMYW	PXR	OUG	AC	DE	QSL	KF	BN	HV	IT
D	NRCY	XWF	GDE	MA	BK	IHV	OP	JQ	LU	TS
E	BRJQ	VKL	GXH	ON	IE	DUF	CT	MA	SY	WP
F	HNYT	AOR	KEV	GJ	SD	IBF	LM	WP	XC	QU
G	ENPC	BUK	SDR	GO	JW	IYM	AQ	XV	FT	HL
H	GVYE	JXL	QPO	UH	DM	NTF	BA	KI	RC	SW
I	PFCA	GLO	KIR	QB	WM	DTS	YU	EH	NJ	VX
J	KFPS	JLD	BEH	MR	CU	WAI	OY	QG	XV	TN
K	GNJS	WRA	LBI	QP	DV	KFH	XT	MU	EY	CO
L	XLUG	QSM	VKI	BY	RO	DWE	HJ	AP	NT	FC
M	MSEW	RIQ	VAO	KP	NJ	TYF	LC	HX	BU	GD
N	MKIS	AWL	DQC	RB	JU	FXG	HV	OE	PY	NT
O	RXMJ	NPQ	KEU	HO	YB	FSW	TD	GL	AC	VI
P	SGWH	QKU	MVI	CE	DR	PYX	ON	AF	JL	BT
Q	XJIL	NHO	RFM	YT	SB	CVA	DE	GQ	PW	KU
R	JXOA	PFB	CLN	RH	WV	YIM	SD	KU	TG	QE
S	LBDF	RGX	TUJ	SQ	OH	INK	YV	PW	MA	CE
T	NUSM	AGT	WIR	HE	DO	QYF	LP	VC	BK	JX
U	MKIC	XUR	GHA	NJ	YF	QDS	OT	VE	PB	LW
V	TPQX	BSK	NLM	JA	IY	ERV	DC	GU	FO	WH
W	CHIS	EAY	UMX	PQ	JN	LBG	KW	TV	OR	DF
X	BNFY	HOI	MLV	KP	JW	CGS	DE	XT	UQ	AR
Y	XNLY	AUO	JQV	SG	IH	DWF	PE	BT	CK	MR

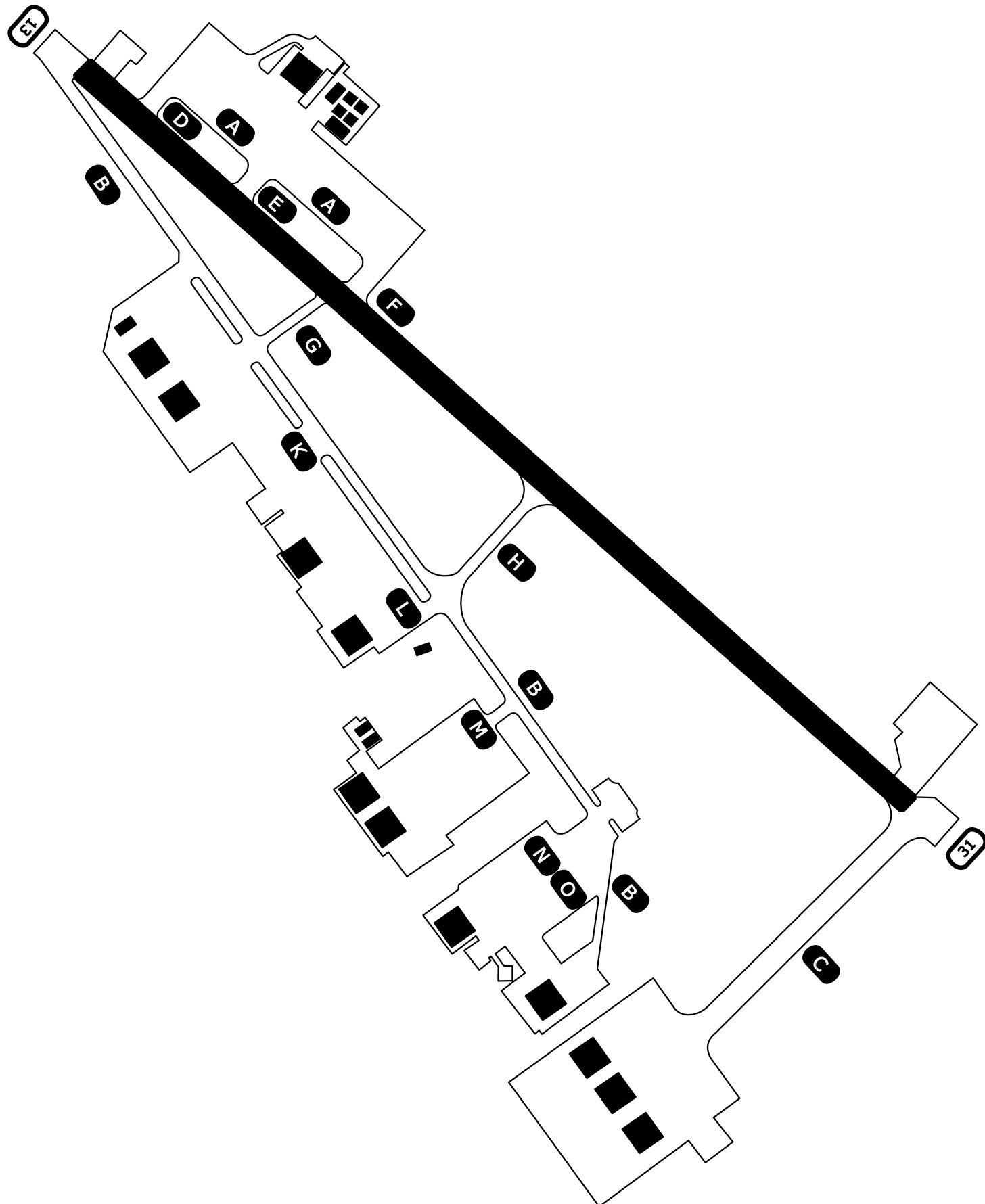
NAVAIDS

Id	Name	Channel	Position	Elevation
DAN	Incirlik	21	N37 00.950 E035 26.883	243
AKR	Akrotiri	107	N34 34.765 E032 57.769	147
PHA	Paphos	79	N34 42.997 E032 28.963	35
RMD	Ramat David	84	N32 39.892 E035 11.265	136
OS66	Kuweires Military Aviation Institute	36	N36 11.362 E037 34.226	1200

Ground Chart Airport Diagram

Amman, Jordan

King Abdulla II. AFB (OJKA)



"Sunshine Tower" : 118.0MHz
"Sunshine Ground" : 121.9MHz

RWY 13/31 : TORA+LDA 7000ft
Elev 2291

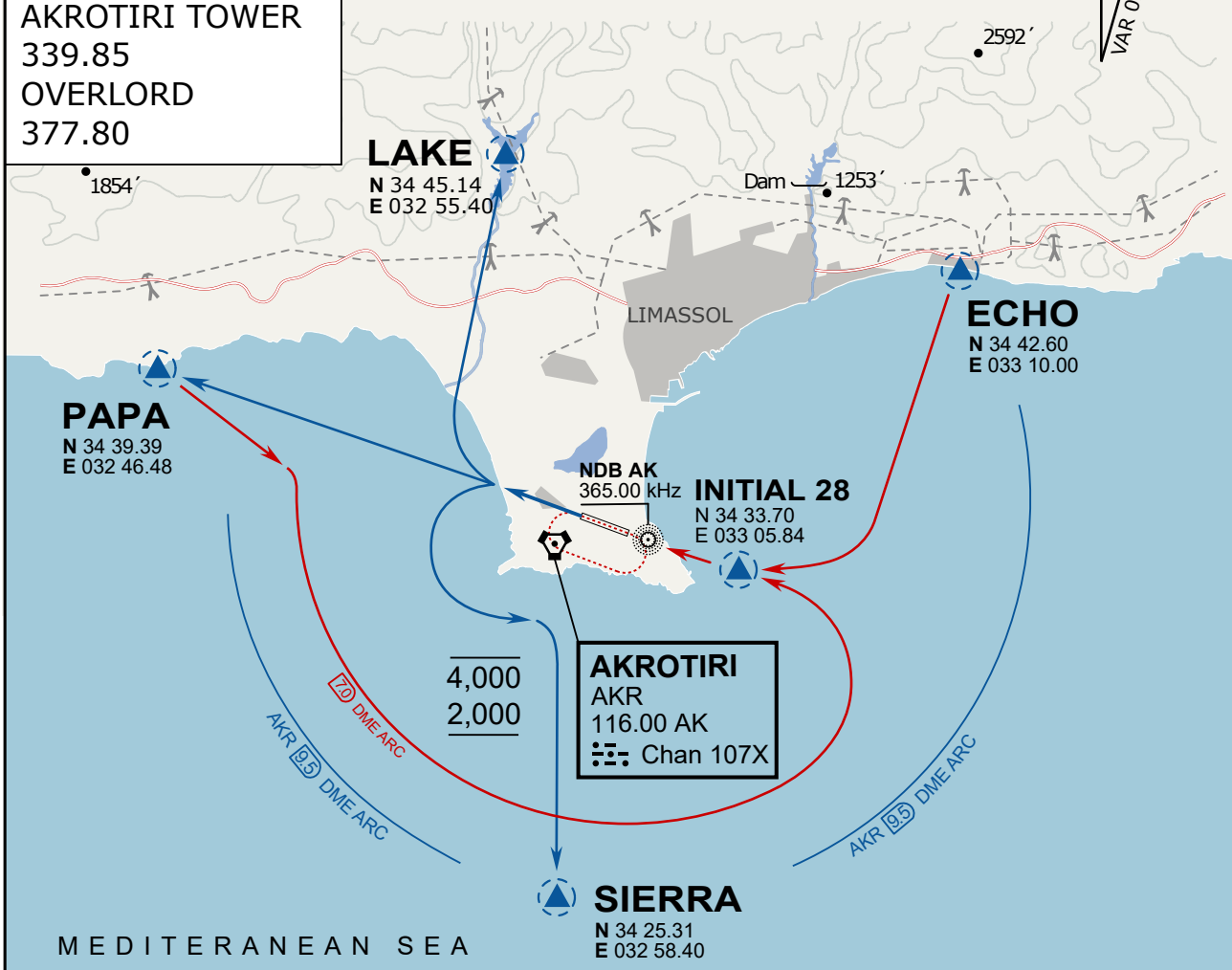
NOT AVAILABLE

NOT AVAILABLE

ATIS
 288.20
AKROTIRI GROUND
 240.10
AKROTIRI TOWER
 339.85
OVERLORD
 377.80

NOT FOR CIVIL USE

CAUTION: If unable to comply with restrictions advise ATC prior to departure.



ARR / DEP ROUTE DESCRIPTION

STRAIGHT-IN RWY28

Pass ENTRY at 5.000' MSL or below, pass INITIAL at 1.500' MSL or below.

OVERHEAD BREAK RWY28

Pass ENTRY at 5.000' MSL or below, pass INITIAL at 2.000' MSL, break to the south.

DEPARTURE GENERAL

Pass Departure end of runway at 1.000' or below.

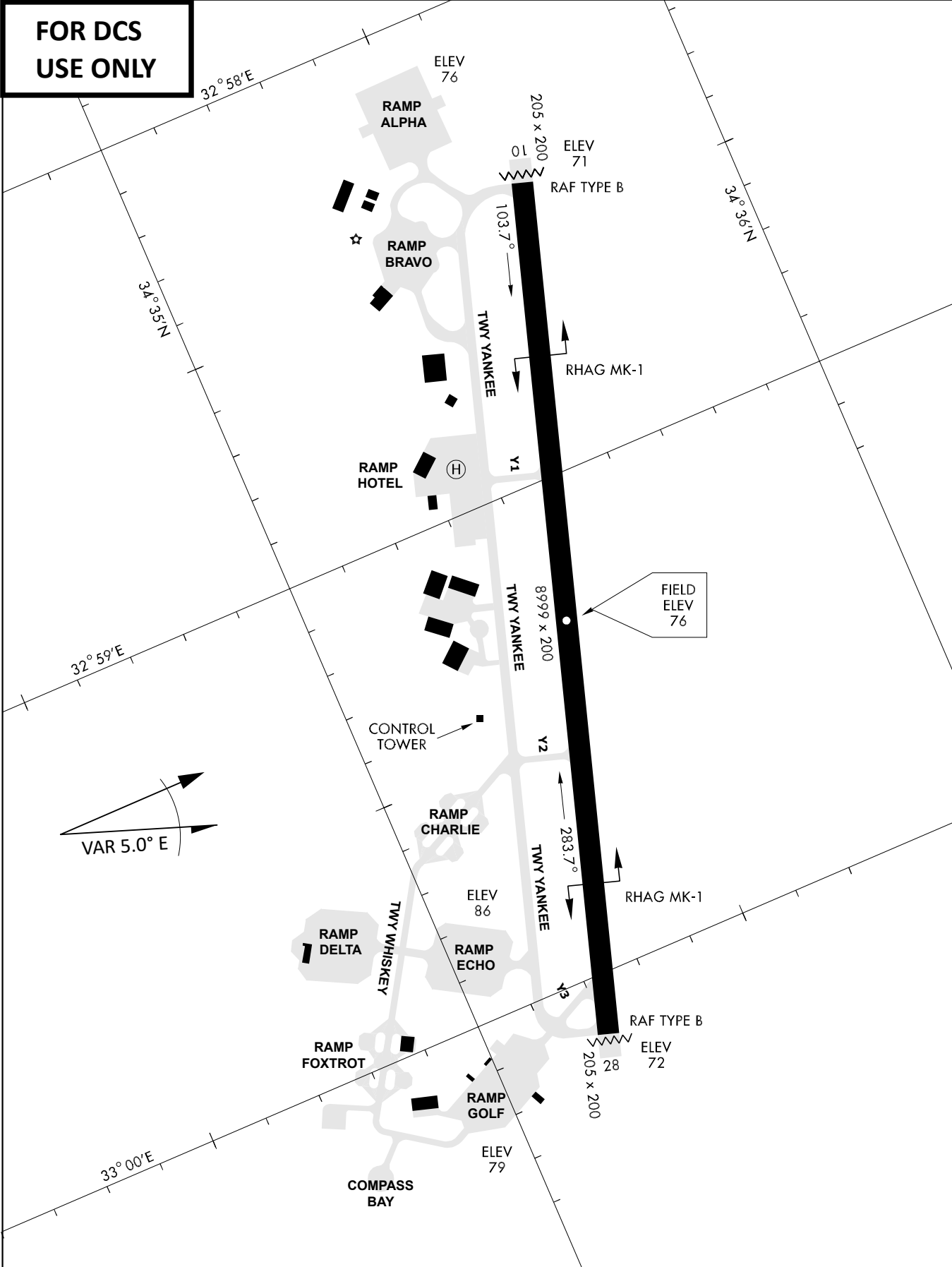
DEP RWY28 PAPA: Fly straight ahead to exit.

DEP RWY28 LAKE: Fly straight ahead until coast, than right turn direct exit.

DEP RWY28 SIERRA: Fly straight ahead until coastline, then climbing left turn, intercept AKR R-180 to exit.

DEP ECHO: no exit.

**FOR DCS
 USE ONLY**



ATIS	AKROTIRI GND	AKROTIRI TWR	OVERLORD CONTROL	TACAN	FIELD ELEVATION
288.20 MHz	240.10 122.10	339.85 130.075	377.8	AKR 107X	75 [ft] 23 [m]