

**MISSION DATA CARD**

OPORD		Callsign		Mission		Date/Time		
2810/2024		Rattler 2		Training		082000APR24		
Task						Freq		
AO	Insurgent Town easy u hard hot					133.5		
Departure				Recovery				
Helicopter VFR				Helicopter VFR				
#	Callsign		Pilot		IFF	TCN	LSR	NET
-1	Rattler 2-1		Laud/Warblade		4621	1Y	1251	
-2	Rattler 2-2		Mütze		4622	64Y	1252	

**LOADOUT**

A/A						GUN	
A/G						CHF	
POD						FLR	
TKS						FUEL	

**TOLD**

	Takeoff	Target	Joker	Bingo	Land
FUEL	2513				

**AIRBASES**

	Name	TCN	ATIS	GND	TWR	RWY	Elev	ILS
Dep	Akrotiri AFB	107X	288.2	240.1	339.85	28	62	109.7
Arr	Akrotiri AFB	107X	288.2	240.1	339.85	28	62	109.7

**FLIGHTPLAN**

#	Name	Navaid/Coords/DME	ALT	TOT
1	LAKE	N34 45.15 E032 55.40		
2	ITR.T1	N34 47.32 E032 58.62		

**COMMS**

Radio	Usage
1	133.50
2	339.85 / 377.8
3	35.35

**OTHER FLIGHTS**

Callsign	Mission	Airframe	Freq	TCN	GrpId	Laser
Raptor	SEAD	4x F-16C	134.0	1/64		162X
AO		Task	SEAD Training Eastern Akrotiri			

**RADIO CHANNELS**

#	Freq	Name
1		Flight/Squadron specific
2	288.2	Akrotiri ATIS
3	240.1	Akrotiri Ground
4	339.85	Aktrotiri Tower
5	335.05	Akrotiri Approach
6	360.1	Incirlik Tower
7	371.35	Incirlik Ground
8	377.475	Incirlik ATIS
9		No Preset
10	127.3	Paphos ATIS
11	353.8	Paphos Tower
12	304.0	CVN-73 George Washington
13	302.0	LHA-1 Tarawa
14	259.0	CV-59 Forrestal
15		No Preset
16	377.8	Overlord
17	265.0	KC-135 Texaco-1 medium/slow
18	319.8	KC-135 Arco-1
19	360.8	KC-135MPRS Arco-2
20	256.0	S-3B Recovery Tanker

**RAMROD**

0	1	2	3	4	5	6	7	8	9
S	Y	N	C	O	P	A	T	E	D

**KTC 1400 C**

	0	1	2	3	4	5	6	7	8	9
A	PLFX	YWH	TKO	UA	MR	DBV	CN	JS	GE	IQ
B	BVGD	KLW	UXM	TR	SJ	PIF	OE	AH	NY	QC
C	PFXD	ULT	KMG	CO	VQ	IES	AJ	BH	YR	NW
D	ENXD	MUR	IWH	TB	LA	PCF	SO	KY	QJ	GV
E	BAYJ	LVK	SND	RP	UE	QHF	CX	WO	IM	GT
F	OXNJ	RVW	AMS	CU	KD	TBL	PH	FG	EQ	YI
G	JGDP	IUH	WOE	VS	AC	TNM	RF	QK	LY	XB
H	RMIL	HTB	FJO	YS	WQ	KCG	VU	XN	EA	PD
I	YCAx	NLR	BWH	FQ	PT	KEU	VJ	GS	MO	DI
J	KVQR	EBF	SWJ	MO	NU	CGA	YT	HD	IL	PX
K	FXKE	BLC	RYW	PS	QN	HDO	IJ	UT	VA	GM
L	RIWM	OKS	LXE	FN	VH	QPB	JU	CY	DG	TA
M	KOAR	YGW	VMI	JC	SH	QXP	LU	BN	TE	FD
N	SMOH	PNR	JUT	DY	FX	BGE	WA	LQ	CK	VI
O	EBVR	QYH	JUP	MF	KN	TXG	DW	CI	AS	LO
P	YBIH	PDX	KLF	NA	ER	UMG	WS	CQ	TO	JV
Q	TDGP	BXU	VWC	SO	RJ	HQA	MK	NI	YF	LE
R	GTES	WAV	POC	NQ	RU	BKL	HF	DX	IM	YJ
S	OGIW	APS	FKH	TE	BD	YRX	QU	JL	NV	MC
T	RQTE	PVU	IGN	LW	KA	YFX	HJ	BC	SO	MD
U	POIS	RMD	NTA	CW	FE	YUB	QX	VK	LH	JG
V	KAHJ	PDS	MCX	LU	OW	EBT	GN	QV	YR	IF
W	HTCS	BPG	AIR	WJ	FM	OYN	XK	EV	LQ	UD
X	XEPI	SOH	FKL	TW	MV	QGB	DN	AY	JC	RU
Y	GIPD	YUK	FNA	MC	HS	BJX	ET	WO	LR	VQ

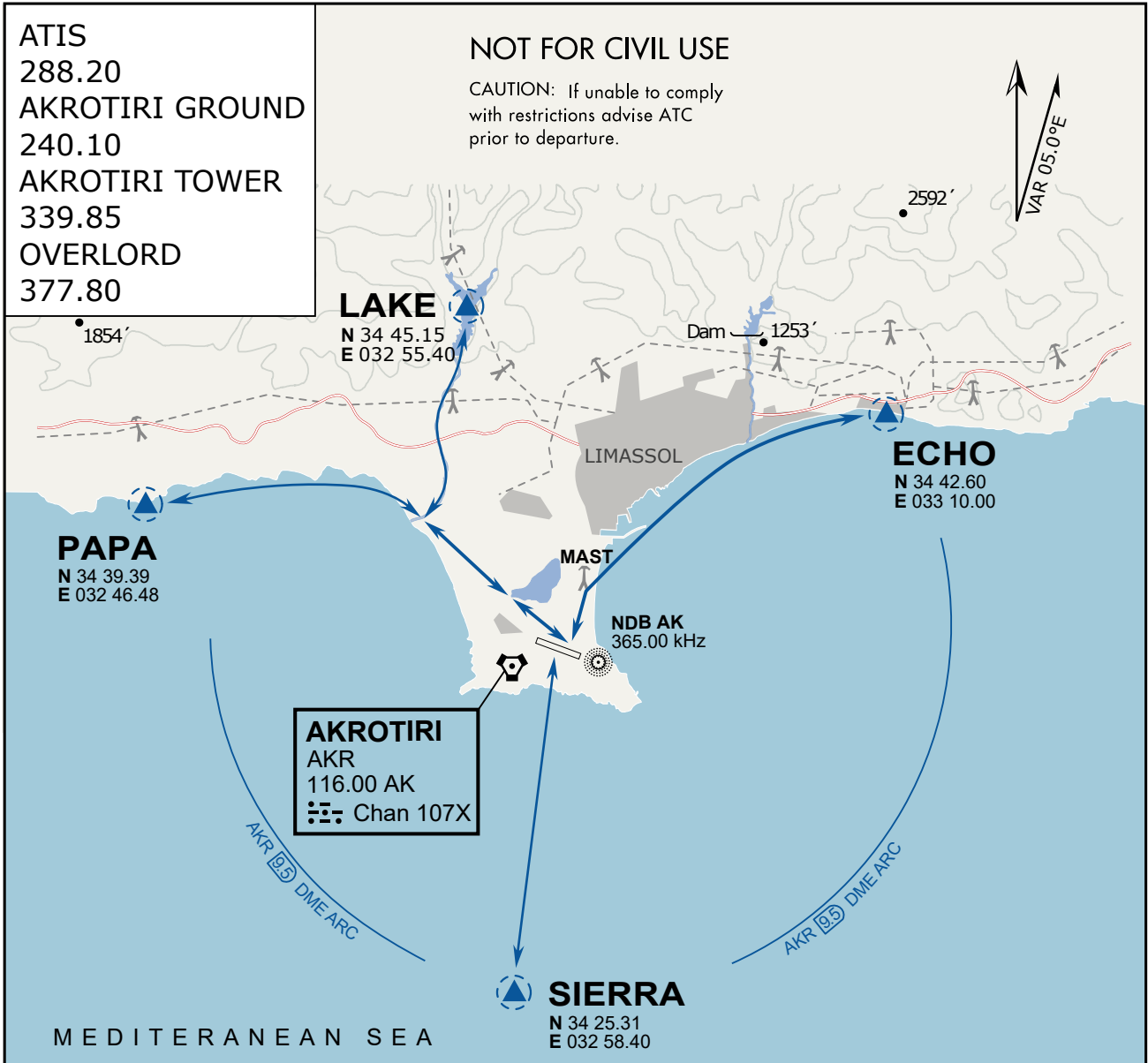
**NAVAIDS**

<b>Id</b>	<b>Name</b>	<b>Channel</b>	<b>Position</b>	<b>Elevation</b>
DAN	Incirlik	21	N37 00.950 E035 26.883	243
AKR	Akrotiri	107	N34 34.765 E032 57.769	147
PHA	Paphos	79	N34 42.997 E032 28.963	35
RMD	Ramat David	84	N32 39.892 E035 11.265	136
OS66	Kuweires Military Aviation Institute	36	N36 11.362 E037 34.226	1200

**FOR DCS  
 USE ONLY**



ATIS	AKROTIRI GND	AKROTIRI TWR	OVERLORD CONTROL	TACAN	FIELD ELEVATION
288.20 MHz	240.10   122.10	339.85   130.075	377.8	AKR 107X	<b>75 [ft] 23 [m]</b>



### ARR / DEP ROUTE DESCRIPTION

#### GENERAL

Stay at or below 500' AGL.

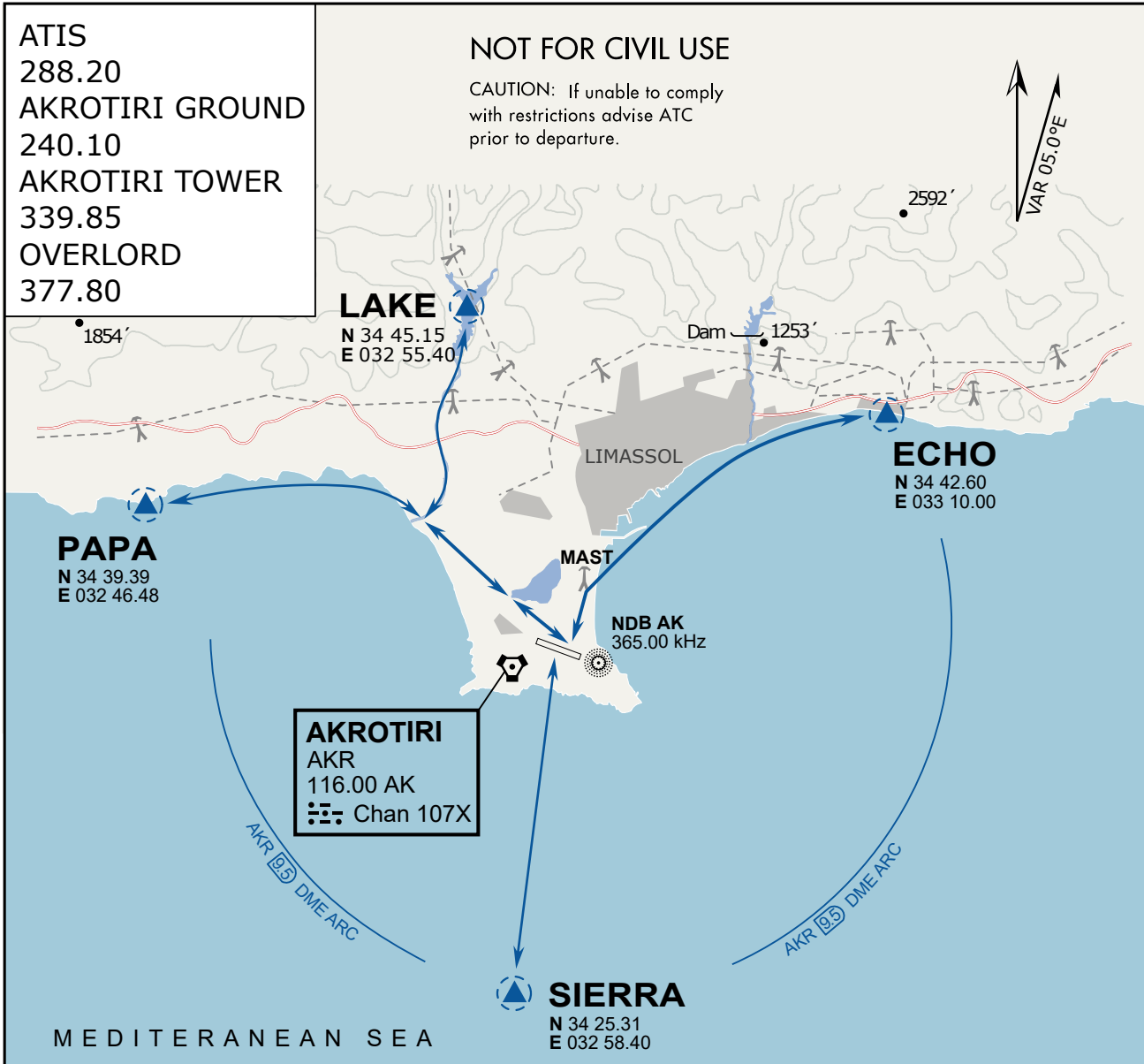
#### DEPARTURE

- ECHO: Via the 4 masts, along the coastline to EXIT.
- LAKE: Stay SOUTH WEST of the dry lake, to the river mouth, follow river to EXIT.
- PAPA: Stay SOUTH WEST of the dry lake, follow coastline to EXIT.
- SIERRA: Direct EXIT.

#### ARRIVAL

- LAKE: Follow river to coastline, then direct LCRA.
- PAPA: Follow coastline to rivermouth, then direct LCRA.
- ECHO: Follow coastline to the 4 masts, then to LCRA.
- SIERRA: Direct to LCRA.





### ARR / DEP ROUTE DESCRIPTION

#### GENERAL

Stay at or below 500' AGL.

#### DEPARTURE

- ECHO: Via the 4 masts, along the coastline to EXIT.
- LAKE: Stay SOUTH WEST of the dry lake, to the river mouth, follow river to EXIT.
- PAPA: Stay SOUTH WEST of the dry lake, follow coastline to EXIT.
- SIERRA: Direct EXIT.

#### ARRIVAL

- LAKE: Follow river to coastline, then direct LCRA.
- PAPA: Follow coastline to rivermouth, then direct LCRA.
- ECHO: Follow coastline to the 4 masts, then to LCRA.
- SIERRA: Direct to LCRA.