

MISSION DATA CARD

OPORD		Callsign		Mission		Date/Time	
2809/2024		Raptor		SEAD		082030APR24	
Task	SEAD Training Eastern Akrotiri					Freq	
AO						134.0	
Departure				Recovery			
RWY10 VFR				RWY10 VFR			
#	Callsign	Pilot	IFF	TCN	LSR	NET	
-1	Raptor-1	Void	1611	1Y	1621		
-2	Raptor-2	Hercules	1612	64Y	1622		
-3	Raptor-3	Butcher	1613	64X	1623		
-4	Raptor-4	Jinx	1614	1X	1624		

LOADOUT

A/A	3xA120C, A9X	GUN	100% SAPHEI
A/G	2xA88C	CHF	90
POD	HTS, A131	FLR	30
TKS	2xFT300	FUEL	100%

TOLD

	Takeoff	Target	Joker	Bingo	Land
FUEL	11169				

AIRBASES

	Name	TCN	ATIS	GND	TWR	RWY	Elev	ILS
Dep	Akrotiri AFB	107X	288.2	240.1	339.85	28	62	109.7
Arr	Akrotiri AFB	107X	288.2	240.1	339.85	28	62	109.7
Div	Paphos Internationl	79X	127.3		353.8	29	40	108.9

FLIGHTPLAN

#	Name	Navaid/Coords/DME	ALT	TOT
1	ECHO	N34 42.600 E033 10	5000	
2	Papa	N34 39.390 E032 46.480	5000	
3	INITIAL 10	N34 37.150 E032 52.670	3000	

OTHER FLIGHTS

Callsign	Mission	Airframe	Freq	TCN	GrpId	Laser
Rattler 2	Training	3x AH-64D	133.5	1/64		125X
AO	Insurgent Town easy u hard hot	Task				

RADIO CHANNELS

#	Freq	Name
1		Flight/Squadron specific
2	288.2	Akrotiri ATIS
3	240.1	Akrotiri Ground
4	339.85	Aktrotiri Tower
5	335.05	Akrotiri Approach
6	360.1	Incirlik Tower
7	371.35	Incirlik Ground
8	377.475	Incirlik ATIS
9		No Preset
10	127.3	Paphos ATIS
11	353.8	Paphos Tower
12	304.0	CVN-73 George Washington
13	302.0	LHA-1 Tarawa
14	259.0	CV-59 Forrestal
15		No Preset
16	377.8	Overlord
17	265.0	KC-135 Texaco-1 medium/slow
18	319.8	KC-135 Arco-1
19	360.8	KC-135MPRS Arco-2
20	256.0	S-3B Recovery Tanker

RAMROD

0	1	2	3	4	5	6	7	8	9
S	Y	N	C	O	P	A	T	E	D

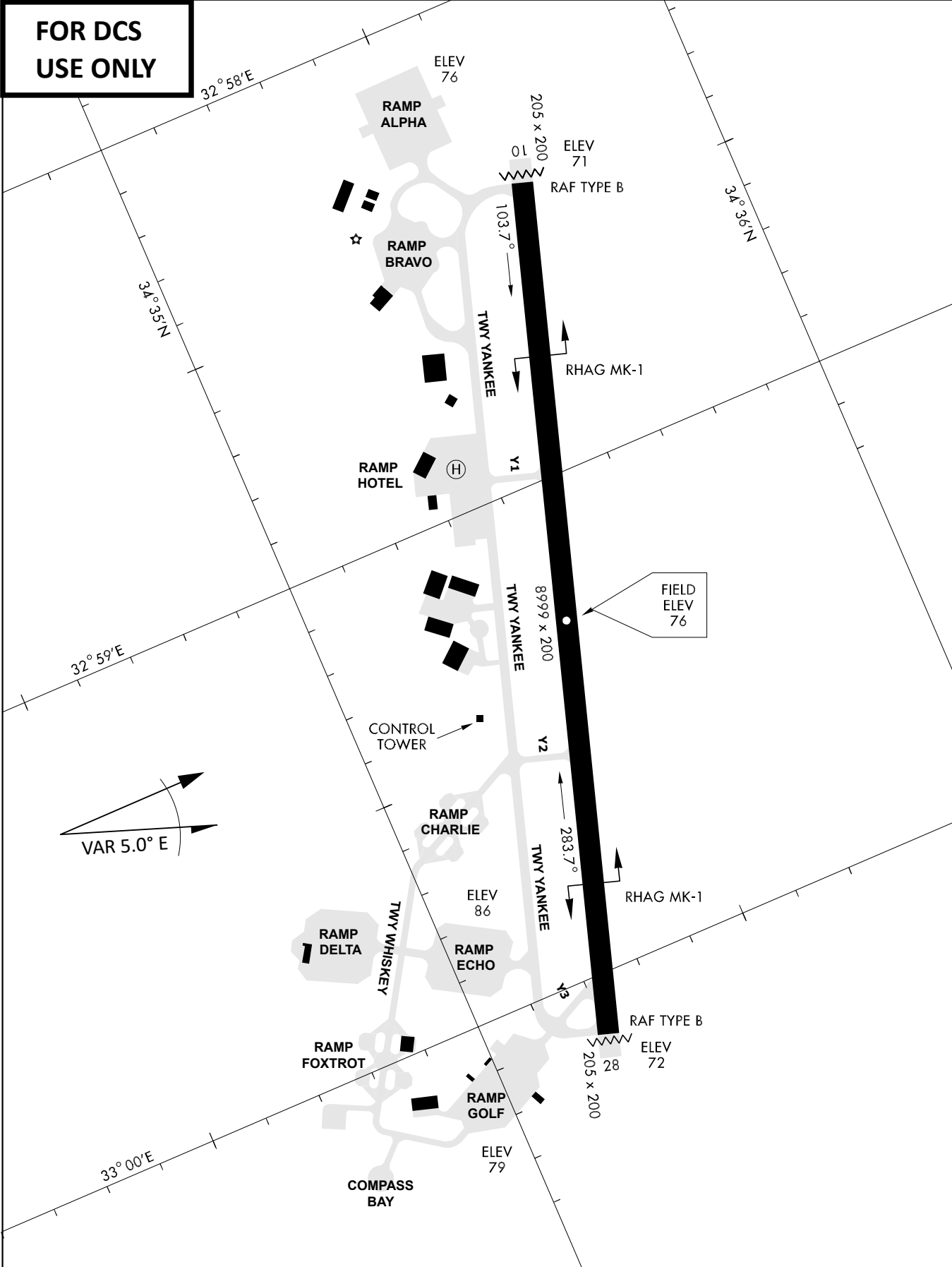
KTC 1400 C

	0	1	2	3	4	5	6	7	8	9
A	PLFX	YWH	TKO	UA	MR	DBV	CN	JS	GE	IQ
B	BVGD	KLW	UXM	TR	SJ	PIF	OE	AH	NY	QC
C	PFXD	ULT	KMG	CO	VQ	IES	AJ	BH	YR	NW
D	ENXD	MUR	IWH	TB	LA	PCF	SO	KY	QJ	GV
E	BAYJ	LVK	SND	RP	UE	QHF	CX	WO	IM	GT
F	OXNJ	RVW	AMS	CU	KD	TBL	PH	FG	EQ	YI
G	JGDP	IUH	WOE	VS	AC	TNM	RF	QK	LY	XB
H	RMIL	HTB	FJO	YS	WQ	KCG	VU	XN	EA	PD
I	YCAx	NLR	BWH	FQ	PT	KEU	VJ	GS	MO	DI
J	KVQR	EBF	SWJ	MO	NU	CGA	YT	HD	IL	PX
K	FXKE	BLC	RYW	PS	QN	HDO	IJ	UT	VA	GM
L	RIWM	OKS	LXE	FN	VH	QPB	JU	CY	DG	TA
M	KOAR	YGW	VMI	JC	SH	QXP	LU	BN	TE	FD
N	SMOH	PNR	JUT	DY	FX	BGE	WA	LQ	CK	VI
O	EBVR	QYH	JUP	MF	KN	TXG	DW	CI	AS	LO
P	YBIH	PDX	KLF	NA	ER	UMG	WS	CQ	TO	JV
Q	TDGP	BXU	VWC	SO	RJ	HQA	MK	NI	YF	LE
R	GTES	WAV	POC	NQ	RU	BKL	HF	DX	IM	YJ
S	OGIW	APS	FKH	TE	BD	YRX	QU	JL	NV	MC
T	RQTE	PVU	IGN	LW	KA	YFX	HJ	BC	SO	MD
U	POIS	RMD	NTA	CW	FE	YUB	QX	VK	LH	JG
V	KAHJ	PDS	MCX	LU	OW	EBT	GN	QV	YR	IF
W	HTCS	BPG	AIR	WJ	FM	OYN	XK	EV	LQ	UD
X	XEPI	SOH	FKL	TW	MV	QGB	DN	AY	JC	RU
Y	GIPD	YUK	FNA	MC	HS	BJX	ET	WO	LR	VQ

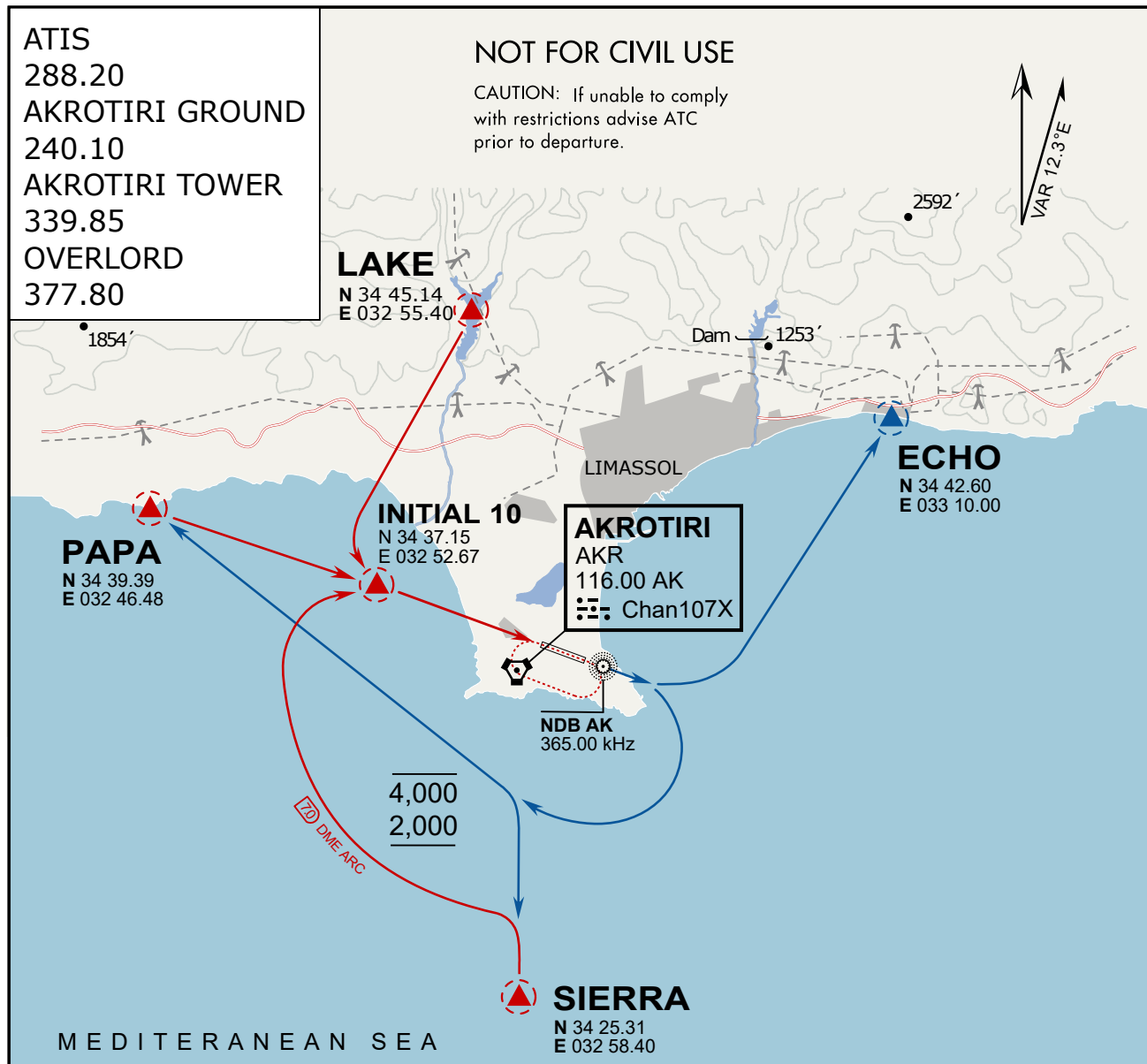
NAVAIDS

Id	Name	Channel	Position	Elevation
DAN	Incirlik	21	N37 00.950 E035 26.883	243
AKR	Akrotiri	107	N34 34.765 E032 57.769	147
PHA	Paphos	79	N34 42.997 E032 28.963	35
RMD	Ramat David	84	N32 39.892 E035 11.265	136
OS66	Kuweires Military Aviation Institute	36	N36 11.362 E037 34.226	1200

**FOR DCS
 USE ONLY**



ATIS	AKROTIRI GND	AKROTIRI TWR	OVERLORD CONTROL	TACAN	FIELD ELEVATION
288.20 MHz	240.10 122.10	339.85 130.075	377.8	AKR 107X	75 [ft] 23 [m]



ARR / DEP ROUTE DESCRIPTION

ARRIVAL GENERAL

Pass Entry at 5.000' or below. Overhead Brake RWY 10: pass INITIAL 10 at 2.000' MSL.
Straight-in RWY 10 : pass INITIAL 1.500' or below.

ARR RWY10 PAPA / LAKE: Direct initial.

ARR RWY10 SIERRA: Intercept ARC 7 of AKR to INITIAL 10.

ARR ECHO: no ENTRY.

DEPARTURE GENERAL

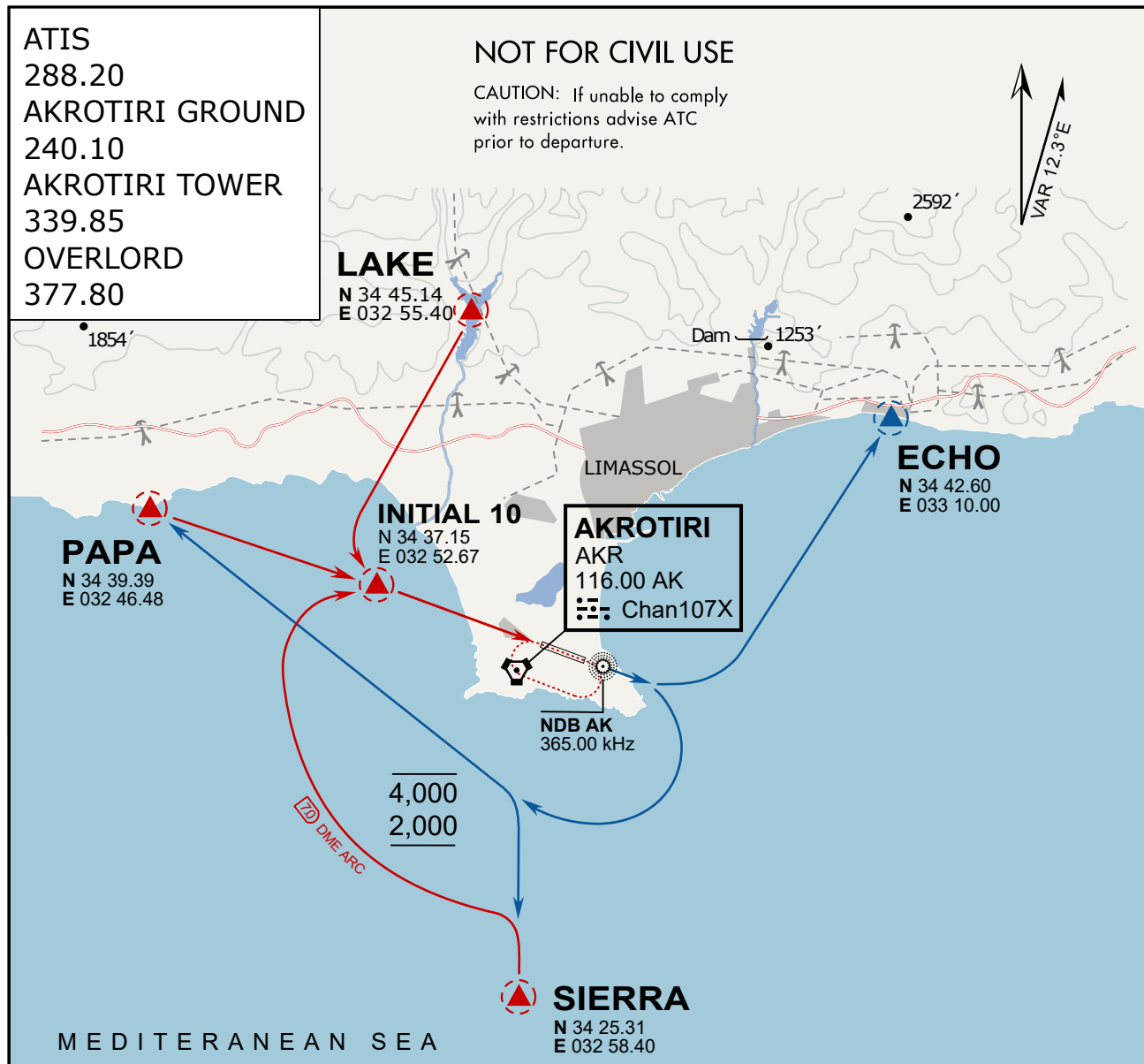
Pass Departure end of runway at 1.000' AGL or below. Keep RWY heading until coastline.

DEP RWY10 ECHO: Direct EXIT.

DEP RWY10 SIERRA: Climbing right turn, intercept R180 AKR to Sierra.

DEP RWY10 PAPA: Climbing right turn until R180 AKR, then direct Papa

DEP LAKE: no EXIT.



ARR / DEP ROUTE DESCRIPTION

ARRIVAL GENERAL

Pass Entry at 5.000' or below. Overhead Brake RWY 10: pass INITIAL 10 at 2.000' MSL.
Straight-in RWY 10 : pass INITIAL 1.500' or below.

ARR RWY10 PAPA / LAKE: Direct initial.

ARR RWY10 SIERRA: Intercept ARC 7 of AKR to INITIAL 10.

ARR ECHO: no ENTRY.

DEPARTURE GENERAL

Pass Departure end of runway at 1.000' AGL or below. Keep RWY heading until coastline.

DEP RWY10 ECHO: Direct EXIT.

DEP RWY10 SIERRA: Climbing right turn, intercept R180 AKR to Sierra.

DEP RWY10 PAPA: Climbing right turn until R180 AKR, then direct Papa

DEP LAKE: no EXIT.

NOT AVAILABLE

NOT AVAILABLE