

**MISSION DATA CARD**

OPORD		Callsign		Mission		Date/Time		
2808/2024		Edelweiss		Training		071800APR24		
Task	Traning					Freq		
AO						264.05		
Departure				Recovery				
RWY28 SID				VFR				
#	Callsign		Pilot		IFF	TCN	LSR	NET
-1	Edelweiss-1		Butcher		1701	1Y	1701	

**LOADOUT**

A/A	4xA120C				GUN	100% SAPHEI	
A/G	12xM82				CHF	240	
POD					FLR	0	
TKS	FT610				FUEL	50%	

**TOLD**

	Takeoff	Target	Joker	Bingo	Land
FUEL	15259				

**AIRBASES**

	Name	TCN	ATIS	GND	TWR	RWY	Elev	ILS
Dep	Akrotiri AFB	107X	288.2	240.1	339.85	28	62	109.7
Arr	Incirlik AFB	21X	377.47 5	371.35	360.1	5	190	
Div	Ramat David AFB		118.4		118.6	27	125	

**FLIGHTPLAN**

#	Name	Navaid/Coords/DME	ALT	TOT
1	IREFA	N34 25.328 E033 26.664	9000	
2	FALCON	N37 05.067 E035 40.888	5000	
3	INITIAL 23	N37 03.956 E035 31.866	3000	
4	EAGLE	N36 52.938 E035 21.611	5000	
5	Ramad David	N32 39.540 E035 10.460	3000	

**RADIO CHANNELS**

#	Freq	Name
1		Flight/Squadron specific
2	288.2	Akrotiri ATIS
3	240.1	Akrotiri Ground
4	339.85	Aktrotiri Tower
5	335.05	Akrotiri Approach
6	360.1	Incirlik Tower
7	371.35	Incirlik Ground
8	377.475	Incirlik ATIS
9		No Preset
10	127.3	Paphos ATIS
11	353.8	Paphos Tower
12	304.0	CVN-73 George Washington
13	302.0	LHA-1 Tarawa
14	259.0	CV-59 Forrestal
15		No Preset
16	377.8	Overlord
17	265.0	KC-135 Texaco-1 medium/slow
18	319.8	KC-135 Arco-1
19	360.8	KC-135MPRS Arco-2
20	256.0	S-3B Recovery Tanker

**RAMROD**

0	1	2	3	4	5	6	7	8	9
P	A	R	C	H	M	E	N	T	S

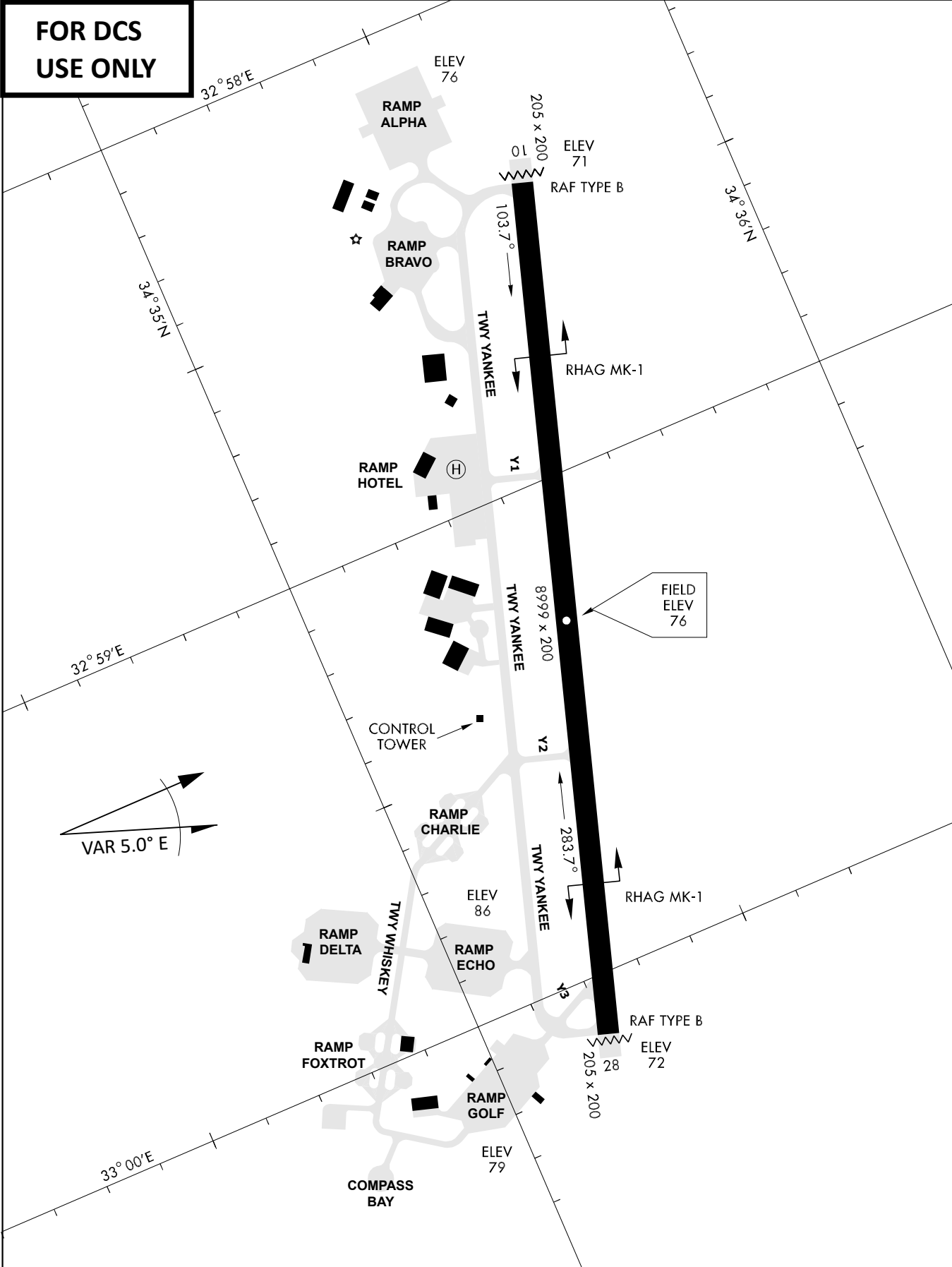
**KTC 1400 C**

	0	1	2	3	4	5	6	7	8	9
A	DSIV	ULC	JOG	WQ	KY	RXP	BH	MA	NT	FE
B	NAES	JIQ	DKT	LR	VM	HPW	YG	FC	UO	BX
C	SLGW	MJQ	YXR	KA	CV	BFH	TD	PU	NO	IE
D	MSNL	VWF	JDA	HQ	EO	KTR	GP	IX	YC	BU
E	RVAY	LWB	UTE	MP	XN	CDF	GK	JS	QI	OH
F	MGXH	LJW	PNQ	VF	DK	IBR	EO	AS	YT	UC
G	GWYB	CIK	SDH	NV	PL	MJF	OR	QU	XA	ET
H	KWMI	FXE	NGC	HP	UB	ART	QD	SY	JV	LO
I	HEUT	IKY	VQP	XB	FO	SDA	RJ	LC	GN	WM
J	QLCB	VWG	TIU	JR	OH	XKE	AP	FY	SM	ND
K	VCJF	YSE	IBQ	RA	PL	XOW	HT	MK	DU	NG
L	NBFX	LMI	YAK	QC	PH	VGO	SD	JW	ER	UT
M	CYRU	GPK	DAB	WE	JS	OIH	LT	NM	QV	FX
N	VRUW	EFB	NYM	XA	SG	LDQ	JI	PH	CO	KT
O	YKIG	AFC	BMU	TW	PV	HSL	OQ	RE	DX	JN
P	FVWH	BDM	UYK	AN	OL	IGS	CE	XP	RT	JQ
Q	KCOH	DIN	RSU	JT	XP	VWE	FQ	BG	LA	YM
R	XBPE	NAS	KRL	FJ	UT	ICG	HQ	WM	DV	OY
S	OSGY	IXA	MRB	EV	WU	FKN	TQ	HP	DJ	LC
T	LTXM	ECY	HPI	FQ	UO	WDB	GR	VJ	AK	SN
U	RDCL	SPM	QWY	OU	TK	VAN	GB	IE	JH	FX
V	IFOU	MRP	TAV	XN	LB	SYE	QG	WK	DC	JH
W	GDPV	SON	YFW	HC	IM	XLR	UA	BQ	TE	KJ
X	PABV	MRD	TUK	WN	HQ	XJG	LF	IC	YS	OE
Y	QFAN	TBS	GJH	YP	EO	XVD	ML	KW	CR	IU

**NAVAIDS**

<b>Id</b>	<b>Name</b>	<b>Channel</b>	<b>Position</b>	<b>Elevation</b>
DAN	Incirlik	21	N37 00.950 E035 26.883	243
AKR	Akrotiri	107	N34 34.765 E032 57.769	147
PHA	Paphos	79	N34 42.997 E032 28.963	35
RMD	Ramat David	84	N32 39.892 E035 11.265	136
OS66	Kuweires Military Aviation Institute	36	N36 11.362 E037 34.226	1200

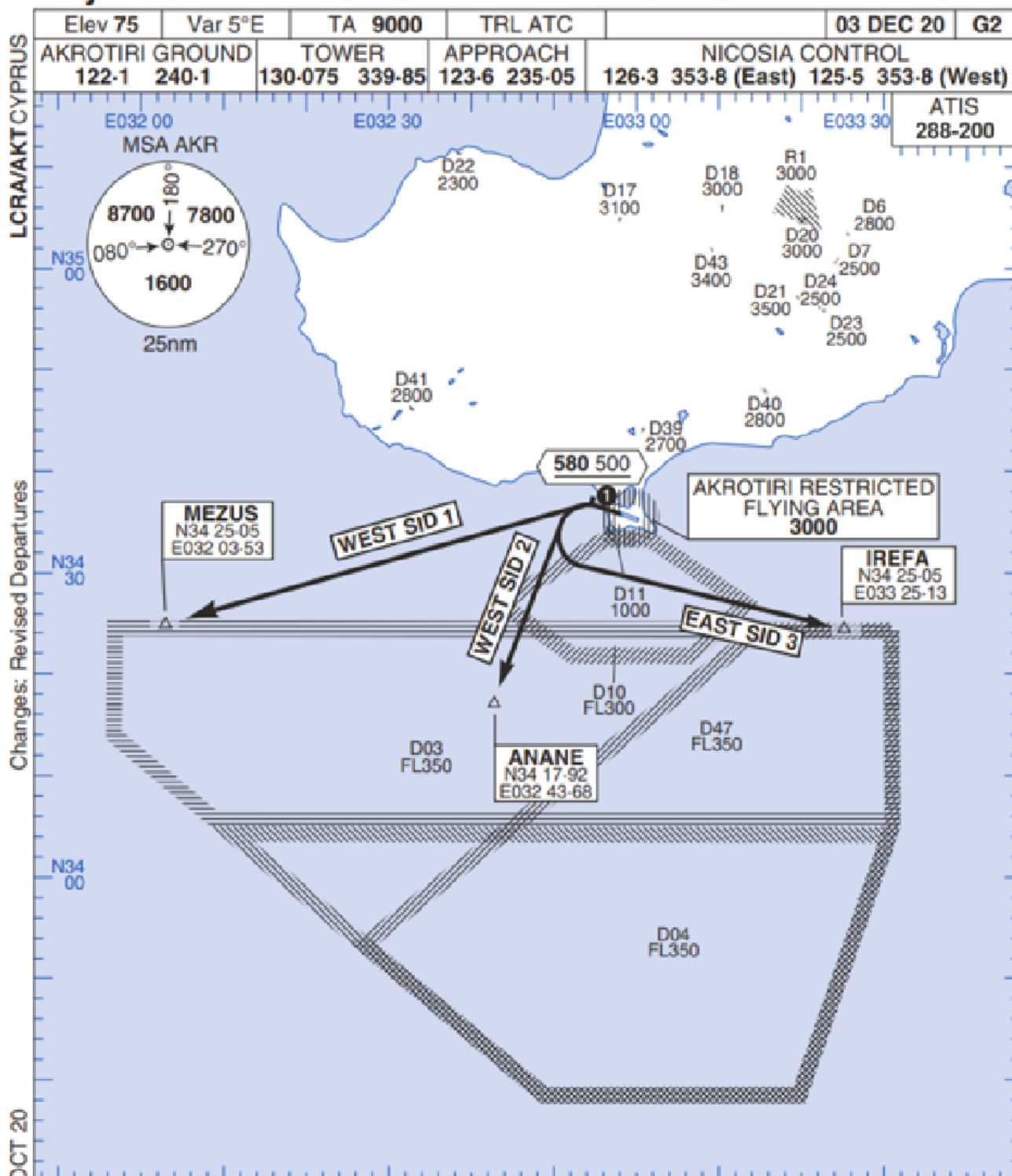
**FOR DCS  
 USE ONLY**



ATIS	AKROTIRI GND	AKROTIRI TWR	OVERLORD CONTROL	TACAN	FIELD ELEVATION
288.20 MHz	240.10   122.10	339.85   130.075	377.8	AKR 107X	<b>75 [ft] 23 [m]</b>

# Rwy 28 OMNIDIRECTIONAL DEPARTURES

# AKROTIRI



Changes: Revised Departures

No1 AIDU Last Amended 06 OCT 20

© UK MOD Crown Copyright 2020. No1 AIDU is not responsible for, and claims no right to, the content or accuracy of 3rd party documents/information.

- 1. Minimum climb gradient 7% to 580 500 for obstacle and operational purposes.
- 2. No turns before DER.
- 3. Turns to north of Rwy prohibited.
- 4. Acft unable to locate MEZUS/ANANE/IREFA should request radar vectors from ATC.

SID	RWY	ROUTEING (Including Mnm Noise Routes)
WEST SID 1	28 283°M	Ahead on Rwy Tr to 580 500, turn left direct to MEZUS. SID terminates at 9000.
WEST SID 2		Ahead on Rwy Tr to 580 500, turn left direct to ANANE. SID terminates at 9000.
EAST SID 3		Ahead on Rwy Tr to 580 500, turn left direct to IREFA. SID terminates at 9000.

ATIS  
377.475 (#8)

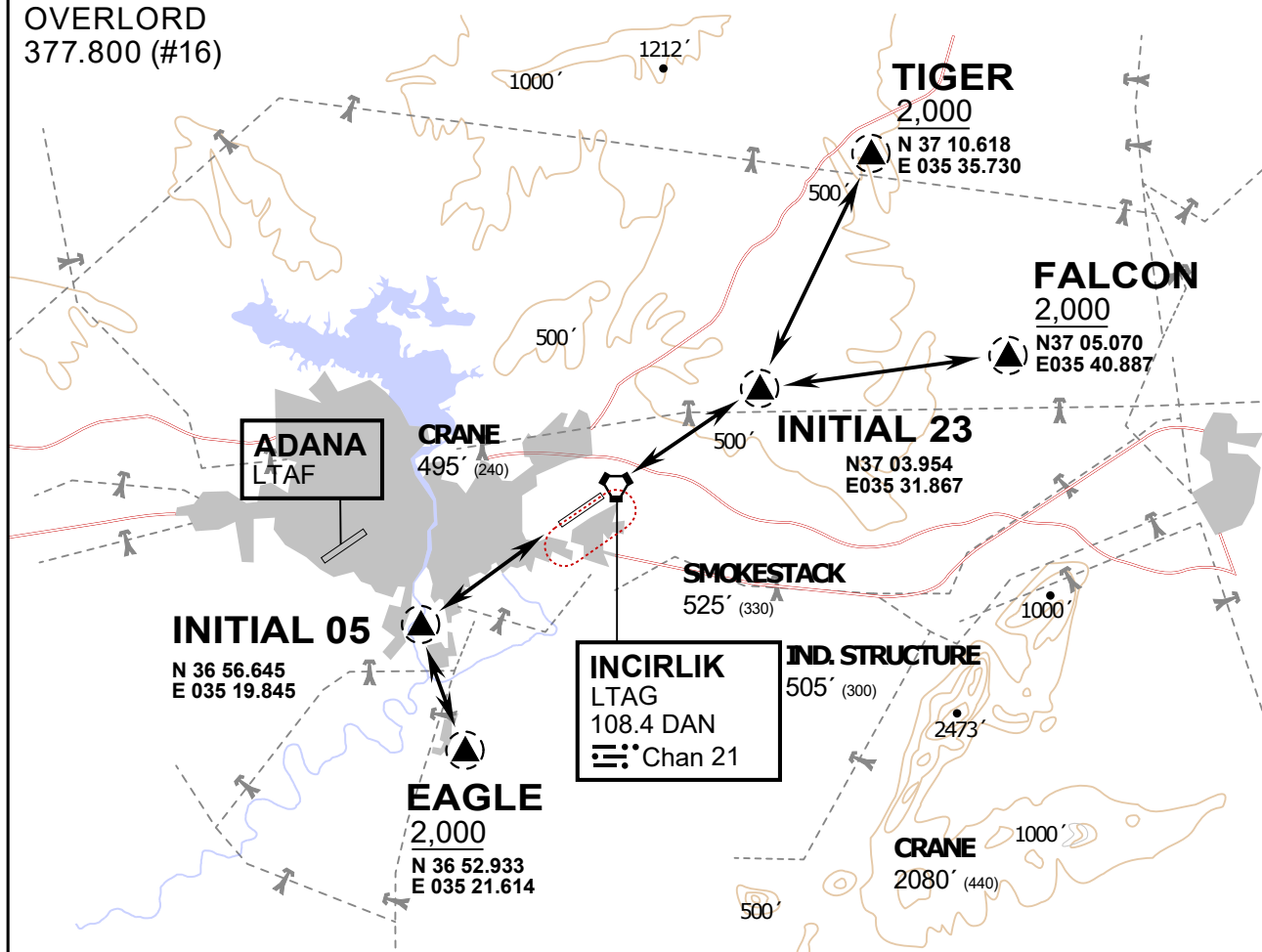
INCIRLIK GROUND  
371.3500 (#7)

INCIRLIK TOWER  
360.100 (#6)

OVERLORD  
377.800 (#16)

NOT FOR CIVIL USE

CAUTION: If unable to comply  
with restrictions advise ATC  
prior to departure.



### ARR / DEP ROUTE DESCRIPTION

#### STRAIGHT-IN RWY 05 / 23

Pass entry EAGLE / TIGER / FALCON at 2000' and INITIAL at 1500'

#### OVERHEAD BREAK RWY 05 / 23

Pass entry EAGLE / TIGER / FALCON at 2500',  
pass INITIAL at 2000' break to the south at 2000' pattern altitude.

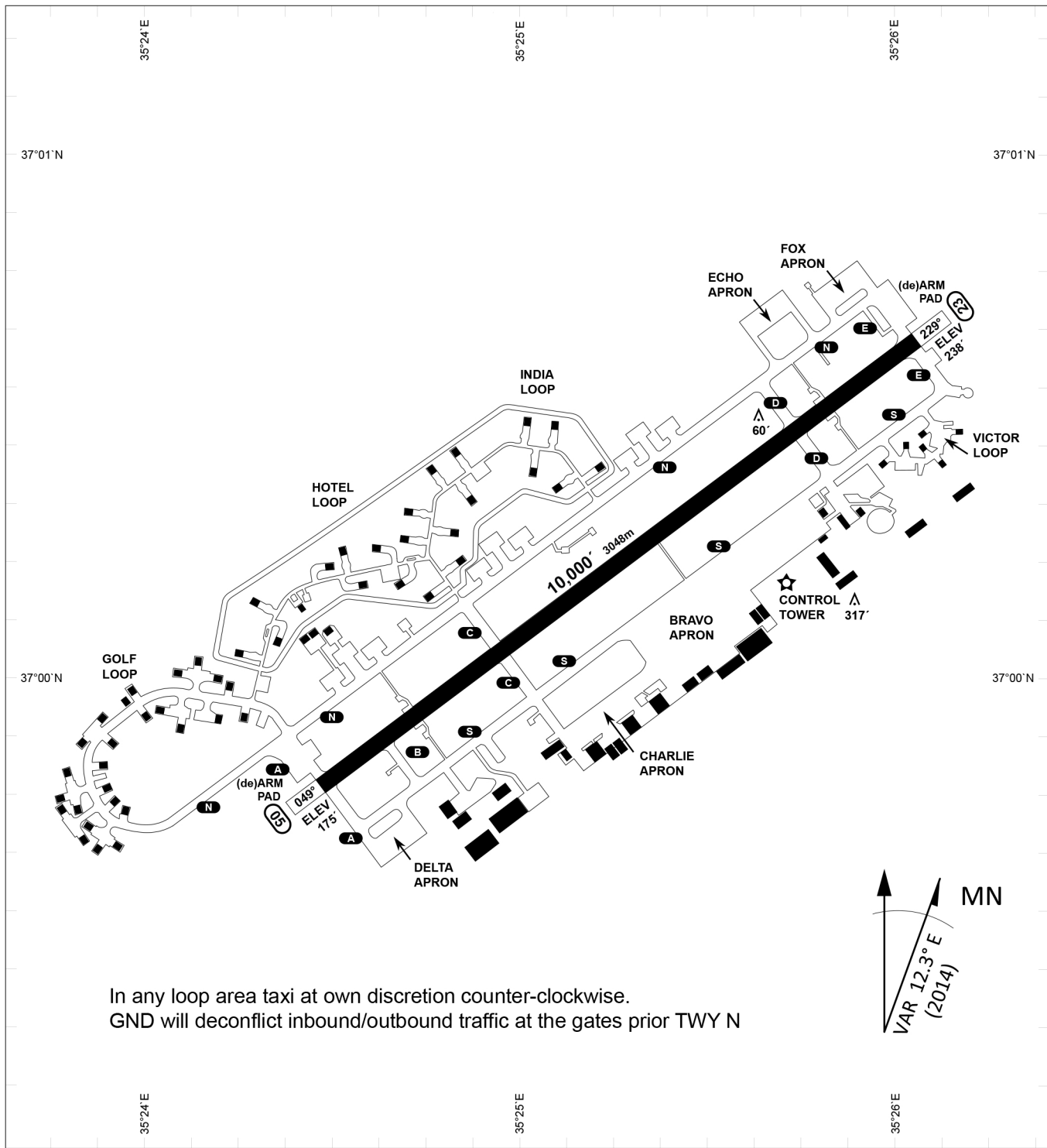
#### HELICOPTER ROUTES

Pass entry EAGLE / TIGER / FALCON at 1000' or below, pass INITIAL at 1000' break to the south at 1000' pattern altitude.

#### DEPARTURE ALL DIRECTIONS

pass DER below 1500ft





In any loop area taxi at own discretion counter-clockwise.  
 GND will deconflict inbound/outbound traffic at the gates prior TWY N

PAR	RWY	CAT	MINIMA	ARP	ELEV	Scale 1:35'500 0 300 600 900 1200 1500 [m] 0 1000 2000 3000 4000 5000 [ft]
	21L	A B D E	2057 - 0.8 200 (200-0.8/1.6) GS 3°	37°0'56.000" N	1857 [ft]	
SRA	21R	A C D E	2257 - 1.2 350 (350-1.2/1.6)	35°26'53.000" E	566 [m]	
	3L	A C D E	2257 - 1.2 350 (350-1.2/1.6)			

RWY	TORA	TORA from D	TORA from B	COURSE	PSN THR	ALS
23	10,000 [ft] 3048 [m]	8,000 [ft] 2438 [m]		235°	37°00.611'N 035°26.368'E	⊙
05	10,000 [ft] 3048 [m]		9,000 [ft] 2743 [m]	055°	36°59.043'N 035°24.760'E	⊙

ATIS	INCIRLIK GROUND	INCIRLIK TOWER	CONTROL	TACAN	ILS RWY 05	ILS RWY 23
377.475	371.350   123.020	360.100   121.100	337.800	DAN21x	109.3MHz	111.7MHz

**NOT AVAILABLE**

TOWER 250.95MHz  
118.60MHz  
4.250MHz  
39.40MHz



DCS SYRIA EFFECTIVE: 19 AUG 2020

DCS SYRIA EFFECTIVE: 19 AUG 2020

