

**MISSION DATA CARD**

OPORD		Callsign		Mission		Date/Time		
2806/2024		Raptor 3		Training		042000APR24		
Task						Freq		
AO						134.0		
Departure				Recovery				
RWY28 SID				TAC 28				
#	Callsign		Pilot		IFF	TCN	LSR	NET
-1	Raptor 3-1		Butcher		1631	1Y	1621	

**LOADOUT**

A/A	2xA120C				GUN	100% HEI-T	
A/G	2xG12				CHF	120	
POD	HTS, TGP				FLR	0	
TKS	2xFT300				FUEL	100%	

**TOLD**

	Takeoff	Target	Joker	Bingo	Land
FUEL	11169				

**AIRBASES**

	Name	TCN	ATIS	GND	TWR	RWY	Elev	ILS
Dep	Akrotiri AFB	107X	288.2	240.1	339.85	28	62	109.7
Arr	Akrotiri AFB	107X	288.2	240.1	339.85	28	62	109.7
Div	King Abulla II. AFB			121.9	118.0	31	2291	

**FLIGHTPLAN**

#	Name	Navaid/Coords/DME	ALT	TOT
1	ANANE	N34 18.048 E032 43.619	9000	
2	VELOX	N33 49.019 E034 05.049	31000	
3	LLRD	N32 39.900 E035 11.262	25000	
4	OJAI	N31 58.303 E035 59.443	9000	
5	OJKA	N32 00.276 E036 13.486	5000	
6	LLHA	N32 48.709 E035 02.570	6000	
7	OLBA	N33 49.459 E035 29.298	5000	
8	IREFA	N34 25.328 E033 26.664	22000	

**COMMS**

Radio	Usage
1	2, 3, 4, 16, 2, 4
2	OJKA = 118.0 MHz

## NOTES

$V_r = 178 \text{ kts}$

**RADIO CHANNELS**

#	Freq	Name
1		Flight/Squadron specific
2	288.2	Akrotiri ATIS
3	240.1	Akrotiri Ground
4	339.85	Aktrotiri Tower
5	335.05	Akrotiri Approach
6	360.1	Incirlik Tower
7	371.35	Incirlik Ground
8	377.475	Incirlik ATIS
9		No Preset
10	127.3	Paphos ATIS
11	353.8	Paphos Tower
12	304.0	CVN-73 George Washington
13	302.0	LHA-1 Tarawa
14	259.0	CV-59 Forrestal
15		No Preset
16	377.8	Overlord
17	265.0	KC-135 Texaco-1 medium/slow
18	319.8	KC-135 Arco-1
19	360.8	KC-135MPRS Arco-2
20	256.0	S-3B Recovery Tanker

**RAMROD**

0	1	2	3	4	5	6	7	8	9
R	A	V	E	N	O	U	S	L	Y

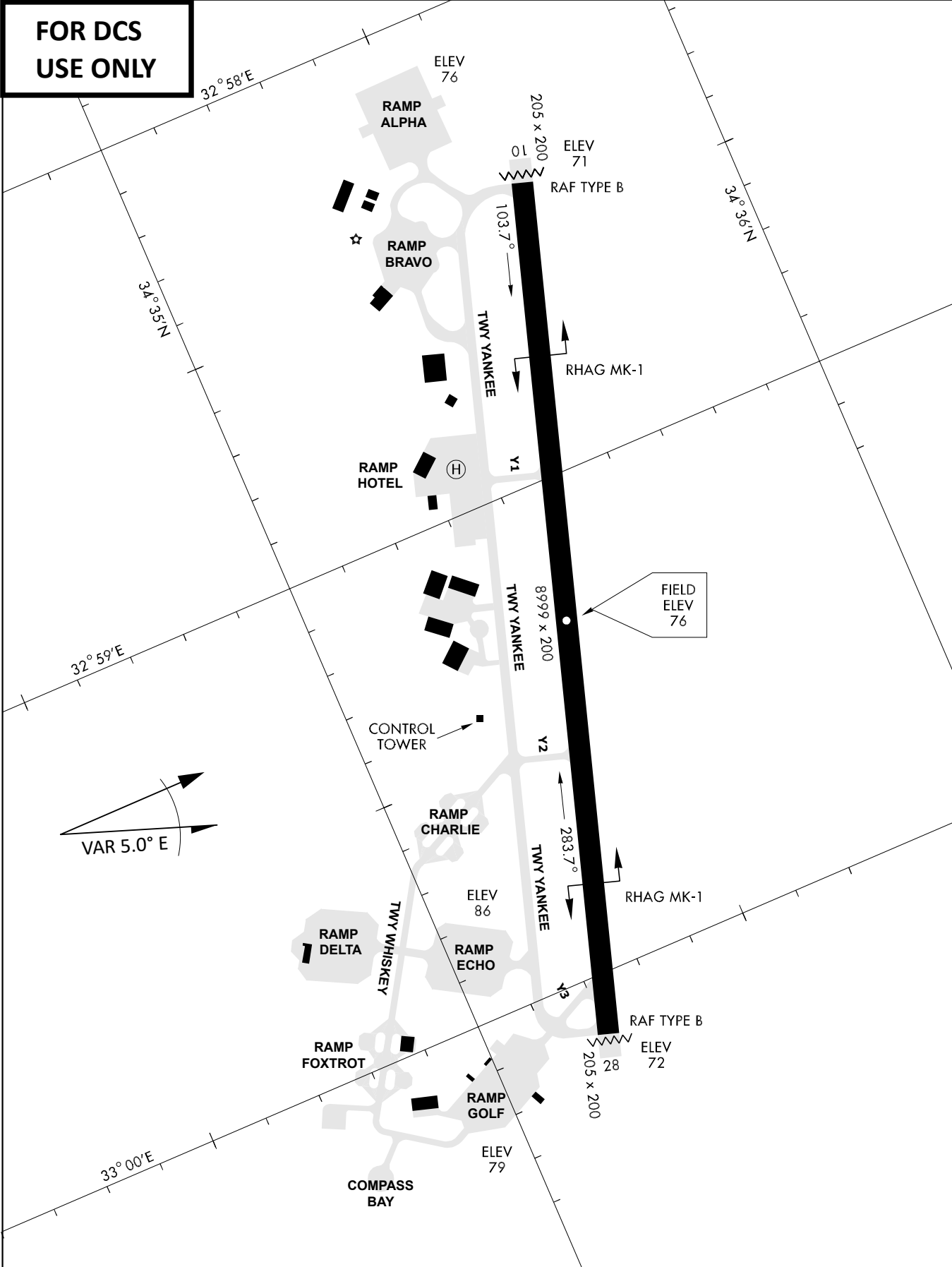
**KTC 1400 C**

	0	1	2	3	4	5	6	7	8	9
A	GCOJ	BMP	FKS	WE	HA	LQR	NT	UY	ID	XV
B	WDEF	MYI	COX	BN	GK	USR	HL	PV	AT	QJ
C	KEYG	CRP	DSM	KA	HT	OLV	UW	NI	FJ	BQ
D	JFPN	KXH	MGD	RS	WY	CAB	VQ	IL	ET	OU
E	FNVT	WSH	BER	JX	MP	GAU	OD	QL	IC	KY
F	PCQN	RXV	HTW	BS	FU	GIJ	LA	ED	OY	MK
G	TOWM	NGI	QLJ	CR	SA	VUX	BY	DH	PE	KF
H	MEQO	ACH	LXJ	TY	VN	USP	FK	RB	GI	DW
I	XQRO	YTD	CHN	KA	WS	MJV	UE	IB	PG	LF
J	VABS	FNQ	UMK	XG	JH	ICR	YT	WE	LD	OP
K	POTY	HJM	IVW	ND	LA	QUF	GX	RE	BS	KC
L	LKMA	XHF	ETU	BC	RQ	WJD	IG	NS	YO	VP
M	WHBD	OYA	PEN	LK	QJ	CSI	MV	UG	XT	FR
N	MPWG	CKO	NDJ	XB	AR	VYT	HI	UL	QS	EF
O	OUVM	CXE	WKD	YT	PG	IFJ	RL	QS	BH	NA
P	UGBH	XQT	KYJ	NI	DA	COL	PS	WF	RM	VE
Q	HKGE	FVR	JUI	WS	YX	QTO	ND	CL	BM	PA
R	XFEP	YGQ	IRH	DL	JC	MKU	SV	BO	AT	WN
S	NCDI	YBV	TSW	KX	LM	QEO	AH	UG	JR	PF
T	YAWR	CEF	PIH	XU	OV	NDK	MS	GL	QB	JT
U	LFNA	QPJ	UGE	HV	BD	ISM	CX	KW	YT	RO
V	JPNT	EDK	RHB	QL	SM	IXU	AF	CV	WO	GY
W	PTEF	LNB	QXA	KG	VC	HDM	YW	IU	JO	RS
X	JHUR	GYP	MSC	FQ	LT	WVX	AB	ID	KO	EN
Y	DGYV	ENQ	FPW	XB	SC	UAR	MK	HJ	LO	TI

**NAVAIDS**

<b>Id</b>	<b>Name</b>	<b>Channel</b>	<b>Position</b>	<b>Elevation</b>
DAN	Incirlik	21	N37 00.950 E035 26.883	243
AKR	Akrotiri	107	N34 34.765 E032 57.769	147
PHA	Paphos	79	N34 42.997 E032 28.963	35
RMD	Ramat David	84	N32 39.892 E035 11.265	136
OS66	Kuweires Military Aviation Institute	36	N36 11.362 E037 34.226	1200

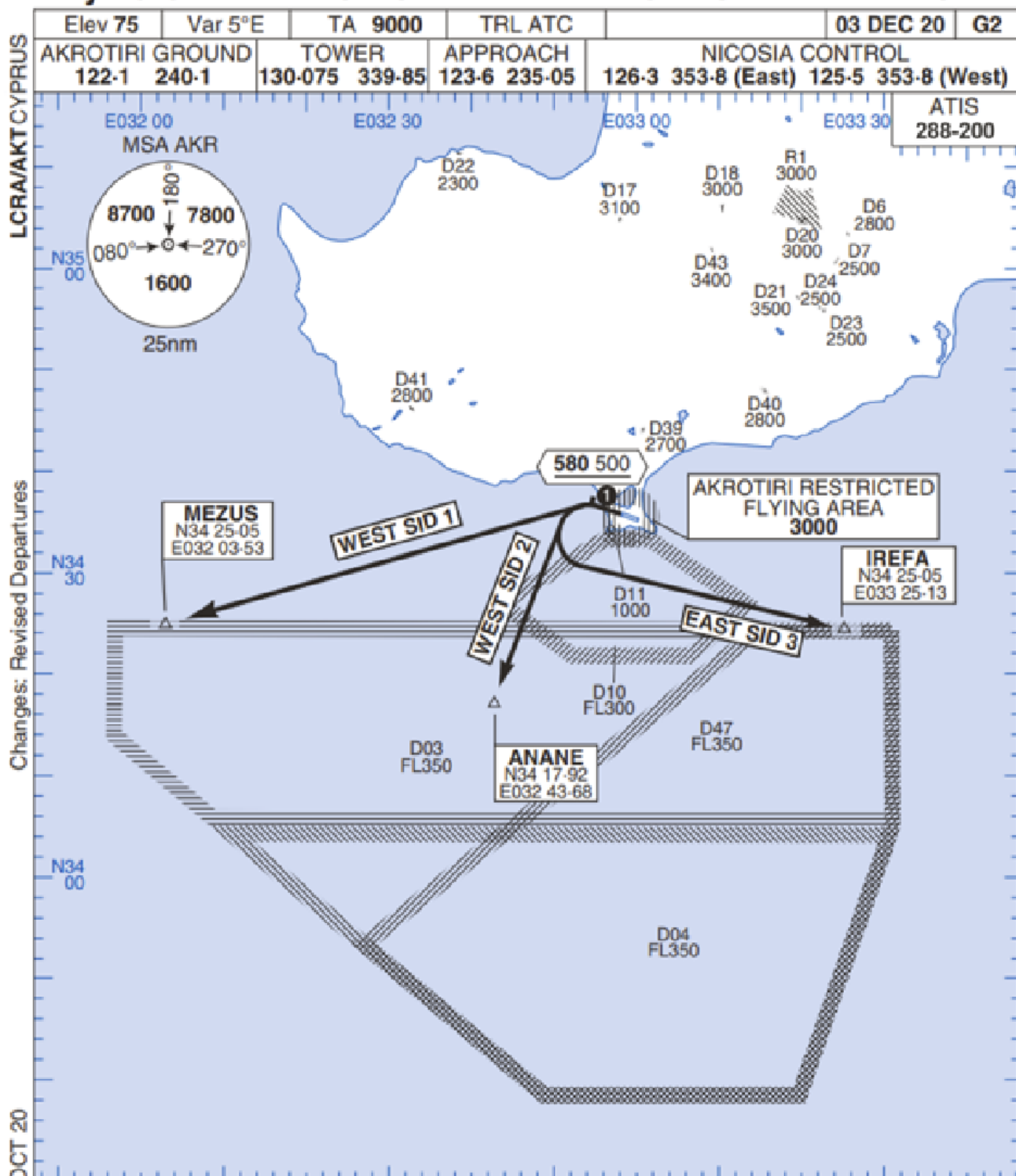
**FOR DCS  
 USE ONLY**



ATIS	AKROTIRI GND	AKROTIRI TWR	OVERLORD CONTROL	TACAN	FIELD ELEVATION
288.20 MHz	240.10   122.10	339.85   130.075	377.8	AKR 107X	<b>75 [ft] 23 [m]</b>

# Rwy 28 OMNIDIRECTIONAL DEPARTURES

# AKROTIRI



Changes: Revised Departures

No1 AIDU Last Amended 06 OCT 20

© UK MOD Crown Copyright 2020. No1 AIDU is not responsible for, and claims no right to, the content or accuracy of 3rd party documents/information.

- 1. Minimum climb gradient 7% to 580 500 for obstacle and operational purposes.
- 2. No turns before DER.
- 3. Turns to north of Rwy prohibited.
- 4. Acft unable to locate MEZUS/ANANE/IREFA should request radar vectors from ATC.

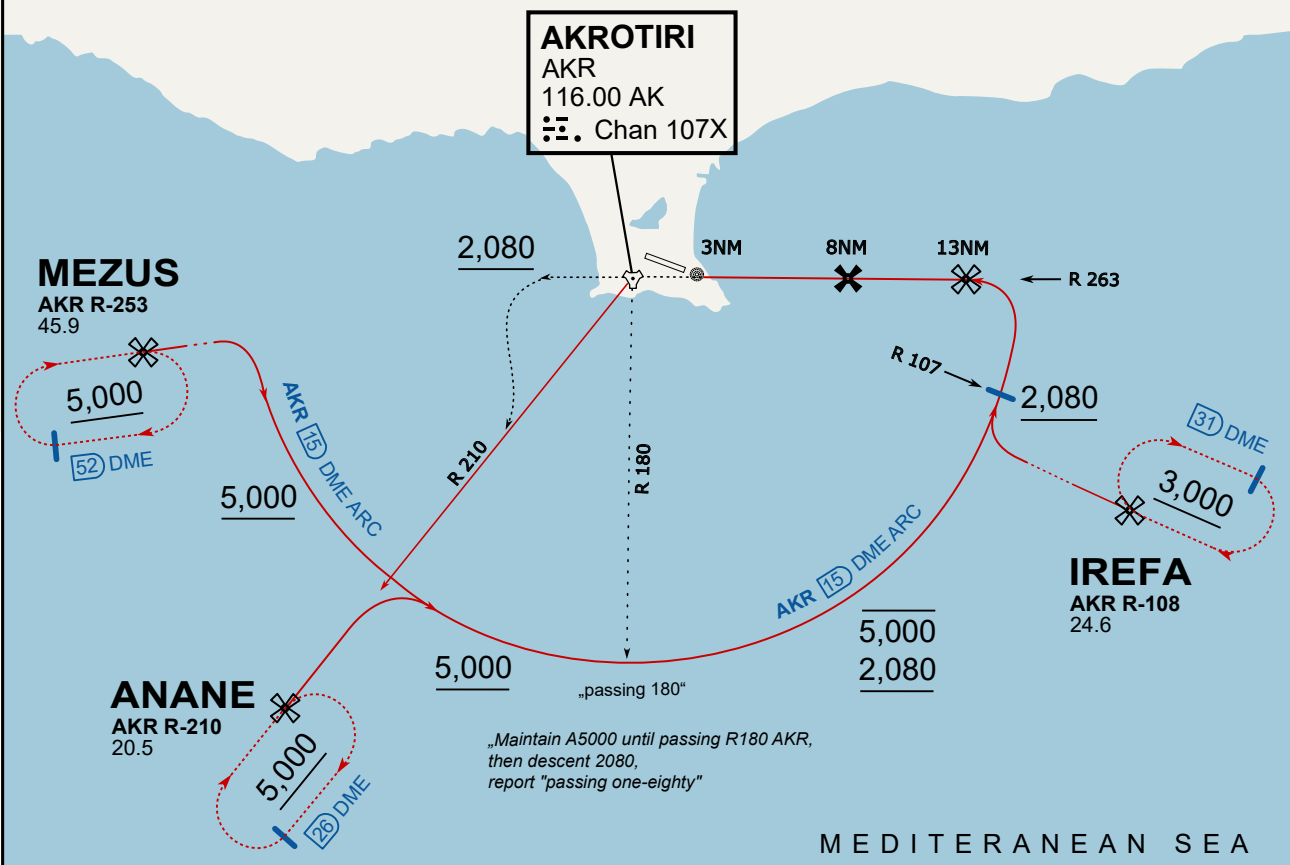
SID	RWY	ROUTEING (Including Mnm Noise Routes)
WEST SID 1	28 283°M	Ahead on Rwy Tr to 580 500, turn left direct to MEZUS. SID terminates at 9000.
WEST SID 2		Ahead on Rwy Tr to 580 500, turn left direct to ANANE. SID terminates at 9000.
EAST SID 3		Ahead on Rwy Tr to 580 500, turn left direct to IREFA. SID terminates at 9000.



**ATIS**  
 288.200  
**AKROTIRI GROUND**  
 122.100  
**AKROTIRI TOWER**  
 339.850  
**APP (OVERLORD)**  
 377.800

## NOT FOR CIVIL USE

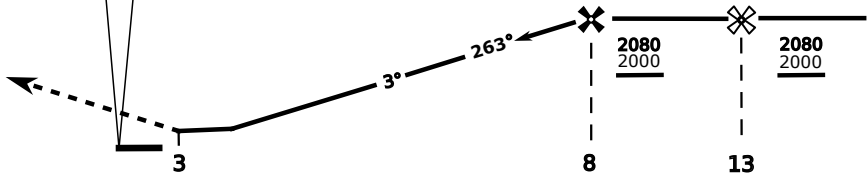
CAUTION: If unable to comply with restrictions advise ATC prior to departure.



On Track 263° climb A 4.000'. passing 2.080' (2.000' AAL) turn left and intercept R-210 AKR to ANANE. Enter ANANE Holding.

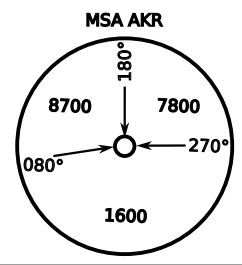


DME AKR	7	6	5	4
ALT	1780	1460	1140	820



THR Elev 74ft DME AKR

CAT	TAC	CIRCLE	GS (kts)	80	120	150	180	210
A	500(430)	N/A	680 (610)	3:06	2:03	1:38	1:22	1:10
B	1300m		2000m	420	640	800	950	1110
C	780 (710)		780 (710)	- CIRCLING PROHIBITED N of Rwy				
D	2600m		3300m	- final track is offset 20° right of RCL and Intcp 1.1NM before THR				
E	1380 (1310)		780 (710)	- when established on final contact tower				
	5000m	3600m	- Timing not Auth to define MAPt					
		1380 (1310)						
		5000m						

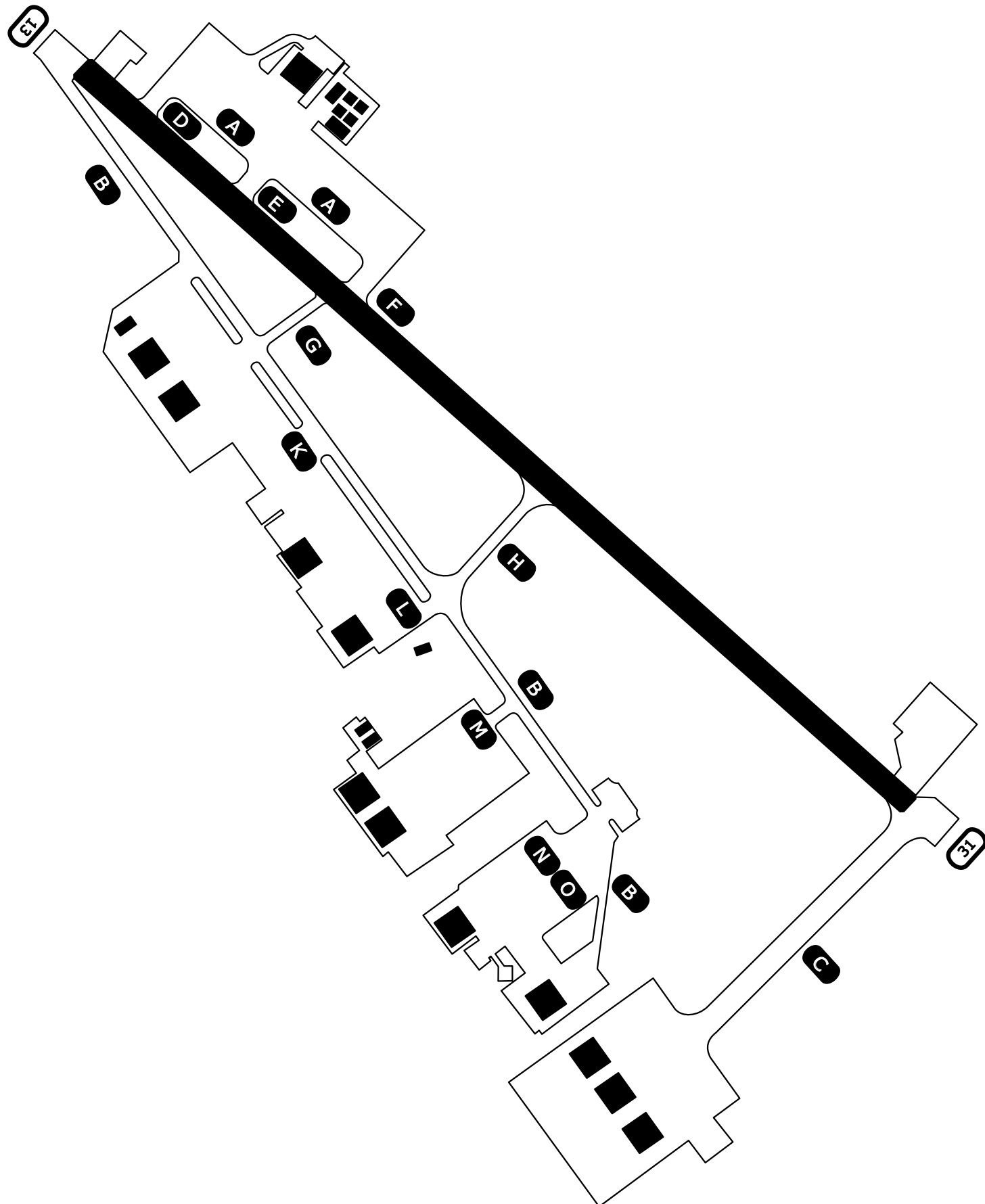


**NOT AVAILABLE**

# Ground Chart Airport Diagram

Amman, Jordan

King Abdulla II. AFB (OJKA)



"Sunshine Tower" : 118.0MHz  
"Sunshine Ground" : 121.9MHz

RWY 13/31 : TORA+LDA 7000ft  
Elev 2291