

MISSION DATA CARD

OPORD		Callsign		Mission		Date/Time		
2805/2024		Nazgul 6		Training		012017APR24		
Task						Freq		
AO						262.45		
Departure				Recovery				
RWY10 SID				ILS 28				
#	Callsign		Pilot		IFF	TCN	LSR	NET
-2	Nazgul 6-2		Tank		1162	64Y	1562	

LOADOUT

A/A						GUN	
A/G						CHF	
POD						FLR	
TKS						FUEL	

TOLD

	Takeoff	Target	Joker	Bingo	Land
FUEL	22588				

AIRBASES

	Name	TCN	ATIS	GND	TWR	RWY	Elev	ILS
Dep	Akrotiri AFB	107X	288.2	240.1	339.85	28	62	109.7
Arr	Akrotiri AFB	107X	288.2	240.1	339.85	28	62	109.7

OTHER FLIGHTS

Callsign	Mission	Airframe	Freq	TCN	Grpld	Laser
Monster 1	Training	4x A-10C	132.15	1/64	21	161X
AO	Gecitkale Airport Range	Task	CAS			
Raptor 1	Training	2x F-16C	134.0	1/64		162X
AO		Task				

RADIO CHANNELS

#	Freq	Name
1		Flight/Squadron specific
2	288.2	Akrotiri ATIS
3	240.1	Akrotiri Ground
4	339.85	Aktrotiri Tower
5	335.05	Akrotiri Approach
6	360.1	Incirlik Tower
7	371.35	Incirlik Ground
8	377.475	Incirlik ATIS
9		No Preset
10	127.3	Paphos ATIS
11	353.8	Paphos Tower
12	304.0	CVN-73 George Washington
13	302.0	LHA-1 Tarawa
14	259.0	CV-59 Forrestal
15		No Preset
16	377.8	Overlord
17	265.0	KC-135 Texaco-1 medium/slow
18	319.8	KC-135 Arco-1
19	360.8	KC-135MPRS Arco-2
20	256.0	S-3B Recovery Tanker

RAMROD

0	1	2	3	4	5	6	7	8	9
U	N	D	E	R	P	L	A	Y	S

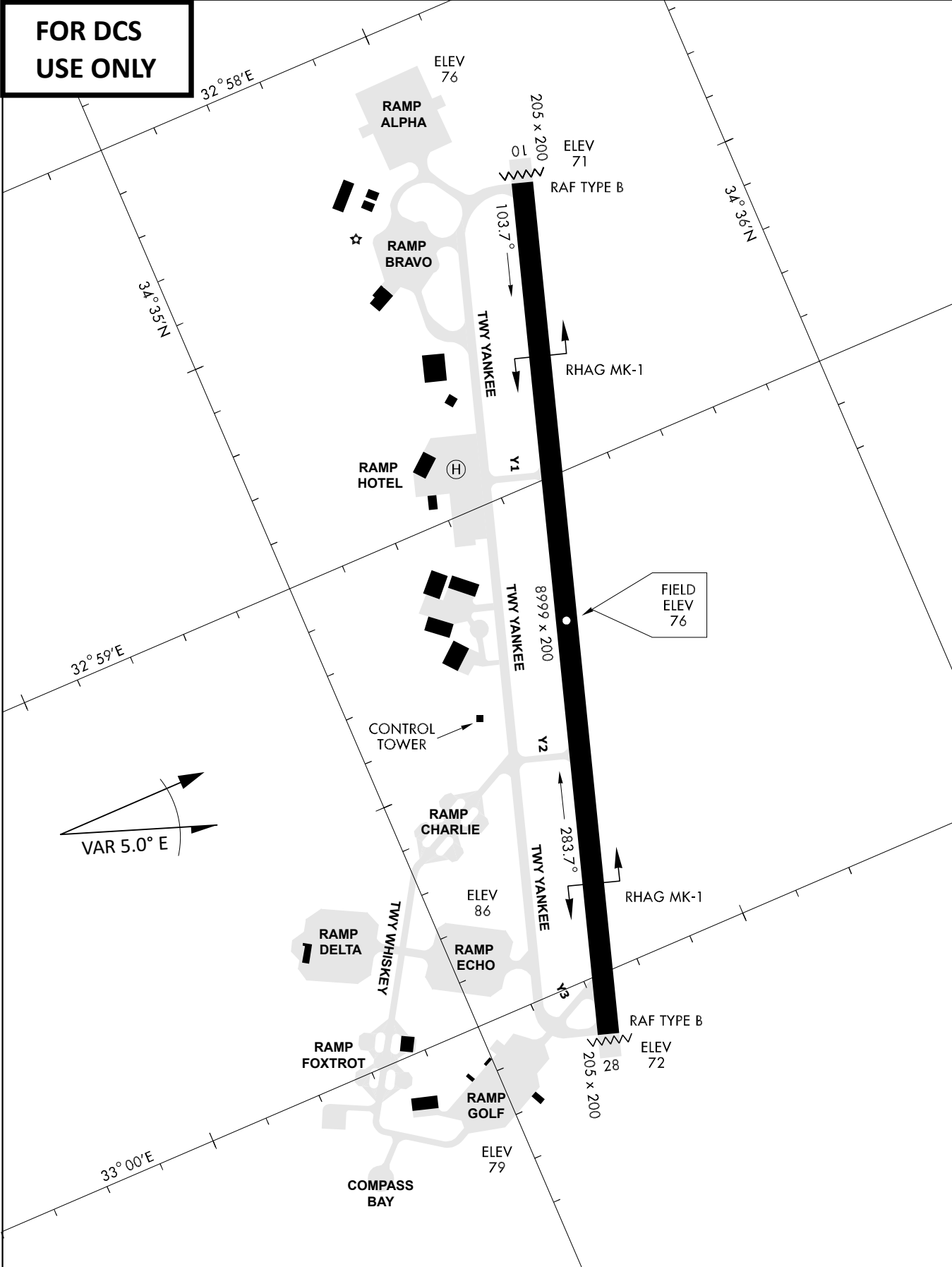
KTC 1400 C

	0	1	2	3	4	5	6	7	8	9
A	YQET	VSB	CHU	OF	AG	WMR	DI	XN	PL	KJ
B	LBDM	QPW	CKY	UG	HX	JVS	IF	TE	AR	NO
C	FYSE	JIN	GTV	XB	CQ	UAD	LO	RM	HP	KW
D	WGTP	EMI	FYL	RX	AQ	HDB	KU	JC	SV	ON
E	EHFR	QID	BTM	NK	VG	USX	PL	CW	YJ	OA
F	LPKT	YOQ	SFU	NH	EG	XAR	IM	DB	VJ	WC
G	FPJY	CRD	QUH	EM	VX	LTK	BW	AI	GS	NO
H	CKNF	DYJ	WHM	XQ	AP	EBO	GR	IL	US	TV
I	KPGJ	WFQ	UHB	VE	SN	IMD	XL	RT	YC	OA
J	CWHM	KED	QXN	JS	GI	BYA	FO	TV	UR	PL
K	FGPR	CWH	QSI	UY	TO	MEV	KJ	NL	DB	XA
L	SDHK	EAJ	TVQ	BO	MN	XLG	FI	PW	YC	UR
M	AJKS	VIT	LBC	ED	RF	OXF	NY	QH	MU	WG
N	HJIO	VUK	PQT	NF	RD	XEC	BL	SA	GM	YW
O	YSHB	FAJ	GQX	EO	DM	LIR	WN	UT	PC	KV
P	WYEH	VBM	SDQ	UI	XO	NRF	PA	KL	TJ	GC
Q	RCOB	NMI	SAD	JT	EK	VHG	PQ	FL	XU	WY
R	YPXW	ECH	NQA	IJ	SB	KRG	LO	UV	DT	FM
S	PDQO	RWF	BKU	IH	LJ	MXE	SN	TY	VC	GA
T	UQXE	AOJ	NKB	PH	MT	VCG	RS	IW	FY	LD
U	CURH	AOP	FXI	YV	LN	GED	KB	TQ	SM	JW
V	SLEF	HIN	DOW	PM	YT	CQR	JA	XB	GV	UK
W	UYHE	KGQ	JRM	PN	TV	ASC	WB	FX	IL	OD
X	WHMC	ELB	FTQ	DR	JG	AKU	PI	SX	VO	YN
Y	ANDY	TCJ	REK	GV	WH	LUP	FS	QI	MB	OX

NAVAIDS

Id	Name	Channel	Position	Elevation
DAN	Incirlik	21	N37 00.950 E035 26.883	243
AKR	Akrotiri	107	N34 34.765 E032 57.769	147
PHA	Paphos	79	N34 42.997 E032 28.963	35
RMD	Ramat David	84	N32 39.892 E035 11.265	136
OS66	Kuweires Military Aviation Institute	36	N36 11.362 E037 34.226	1200

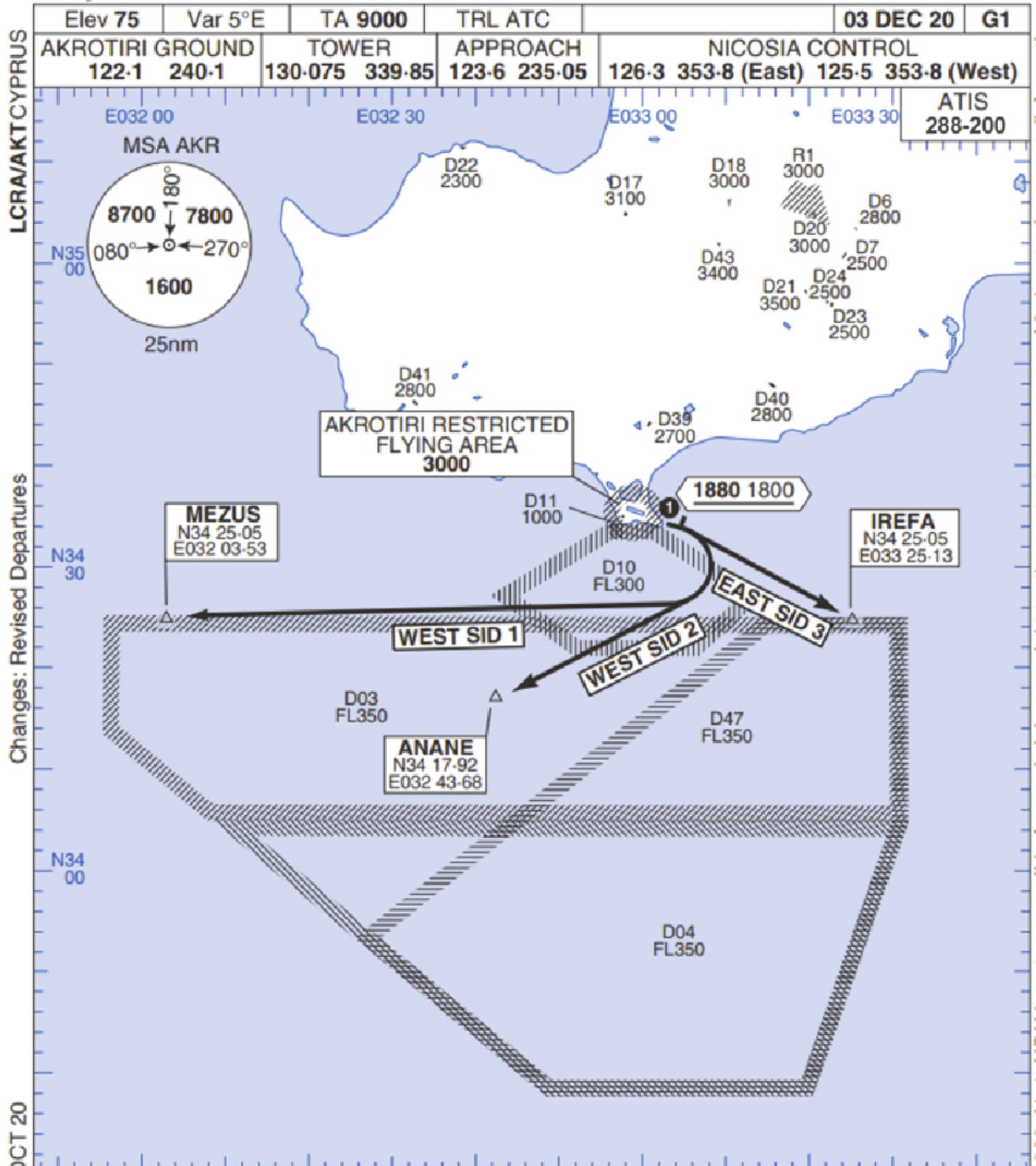
**FOR DCS
 USE ONLY**



ATIS	AKROTIRI GND	AKROTIRI TWR	OVERLORD CONTROL	TACAN	FIELD ELEVATION
288.20 MHz	240.10 122.10	339.85 130.075	377.8	AKR 107X	75 [ft] 23 [m]

Rwy 10 OMNIDIRECTIONAL DEPARTURES

AKROTIRI



LCRA/AKTCYPRUS

Changes: Revised Departures

No1 AIDU Last Amended 06 OCT 20

© UK MOD Crown Copyright 2020. No1 AIDU is not responsible for, and claims no right to, the content or accuracy of 3rd party documents/information.

Elev 75	Var 5°E	TA 9000	TRL ATC		03 DEC 20	G1	
AKROTIRI GROUND 122-1 240-1		TOWER 130-075 339-85		APPROACH 123-6 235-05		NICOSIA CONTROL 126-3 353-8 (East) 125-5 353-8 (West)	
							ATIS 288-200

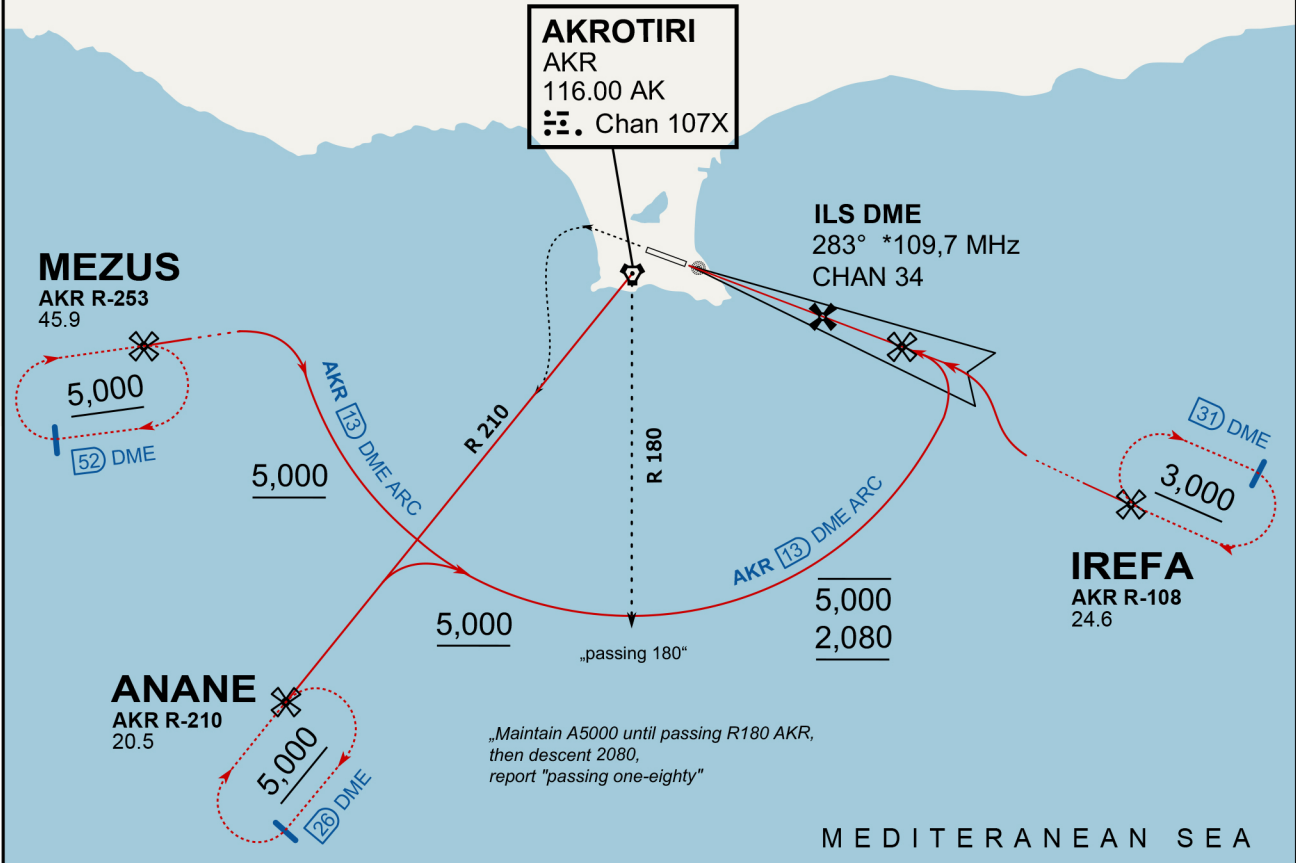
- ① Minimum climb gradient 7% to 1880 1800 for obstacle and operational purposes.
- 2. No turns before DER.
- 3. Turns to north of Rwy **prohibited**.
- 4. Acft unable to locate MEZUS/ANANE/IREFA should request radar vectors from ATC.

SID	RWY	ROUTEING (Including Mnm Noise Routes)
WEST SID 1	10 103°M	Ahead on Rwy Tr to 1880 1800, then right direct to MEZUS. SID terminates at 9000.
WEST SID 2		Ahead on Rwy Tr to 1880 1800, then right direct to ANANE. SID terminates at 9000.
EAST SID 3		Ahead on Rwy Tr to 1880 1800 then right direct to IREFA. SID terminates at 9000.

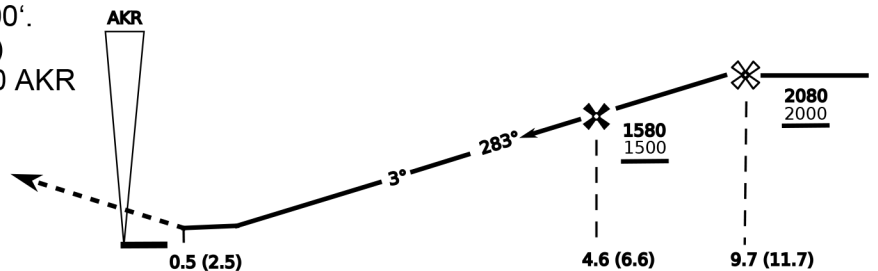
ATIS
288.200
AKROTIRI GROUND
122.100
AKROTIRI TOWER
339.850
APP (OVERLORD)
377.800

NOT FOR CIVIL USE

CAUTION: If unable to comply with restrictions advise ATC prior to departure.



On Track 283° climb A 4.000'.
passing 2.080' (2.000' AAL)
turn left and intercept R-210 AKR
to ANANE.
Enter ANANE Holding.



THR Elev 74ft DME I-AK (DME AKR)

CAT	ILS/DME	LOC/DME	CIRCLE	GS (kts)				
				80	120	150	180	210
A	280 (200)	390 (320) 800m	680 (610) 1500m	FAF - MAPt (4.1NM) 3:06 2:03 1:38 1:22 1:10				
B	800m		680 (610) 1600m	RoD (fpm) 420 640 800 950 1110				
C	290 (210) 800m		780 (710) 2400m	- CIRCLING PROHIBITED N of Rwy - no AUTO coupled ILS approaches - when established on ILS contact Tower - Timing not Auth to define MAPt				
D	310 (230) 800m		780 (710) 3600m					
E	340 (260) 800m		1380 (1310) 3600m					

