

MISSION DATA CARD

OPORD		Callsign		Mission		Date/Time	
2765/2024		Tiger 1		Strike		142000APR24	
Task	STRIKE BRIDGES					Freq	
AO	ATO 701 27B29					261.15	
Departure				Recovery			
CAT				CASE III			
#	Callsign	Pilot	IFF	TCN	LSR	NET	
-1	Tiger 1-1	Ghost	1211	1Y	1571	01/01	
-2	Tiger 1-2	Jemi	1212	64Y	1572	01/02	
-3	Tiger 1-3	Kosmoss	1213	64X	1573	01/03	

LOADOUT

A/A	2xA9X, A120C	GUN	100% HEI-T
A/G	4xG31	CHF	30
POD	TGP	FLR	90
TKS	FPU-8A	FUEL	100%

TOLD

	Takeoff	Target	Joker	Bingo	Land
FUEL	13047		7000	4000	

AIRBASES

	Name	TCN	ATIS	GND	TWR	RWY	Elev	ILS
Dep	CVN-73 USS G. Washington	55X		ICLS 12	304.0			
Arr	CVN-73 USS G. Washington	55X		ICLS 12	304.0			
Div	Akrotiri AFB	107X	288.2	240.1	339.85	28	62	109.7

FLIGHTPLAN

#	Name	Navaid/Coords/DME	ALT	TOT
1	Veloox	N33 49 03.548 E034 05 02.912	20000	
2	Fence In	N33 30 38.315 E034 36 29.054	25000	
3	IP	N33 26 02.579 E034 56 58.625	28000	
4	Bridge 1	N33 20 22.046 E035 15 07.181	26	
5	Bridge 2	N33 19 24.977 E035 15 51.691	36	
6	Bridge 3	N33 18 31.012 E035 26 14.763	325	
7	Bridge 4	N33 20 32.585 E035 32 35.140	781	
8	Alternate RD 84x	N32 39 59.703 E035 10 49.441	20000	
9	Fence Out	N33 01 12.088 E034 30 23.752	20000	
10	CVN-73 George Washington	N34 26 34.266 E034 00 38.609	3000	

COMMS

Radio	Usage
1	#12(Mother) #16 (OL) #12 (Mother)
2	MIDS: 24/44

NOTES

TARGETS:

TIGER1-1: Bridge 1, Bridge 2, Bridge 3 and Bridge 4

TIGER1-2: Bridge 1, Bridge 2, Bridge 3 and Bridge 4

TIGER1-3: Bridge 1, Bridge 2, Bridge 3 and Bridge 4

====

TO: 07:40

Station Time: 45 min

Bingo: 4000

Joker: 6000

CAT 1/2

====

Weather :

Time : 20.03.2024, 07:00 lcl / 04:00Z

Clouds : BROKEN 9514ft

Wind : 0ft 233/4 , 1600ft 233/8 , 6600ft 236/4 , 26000ft 255/8

QNH 29.94 inHg

====

Bullseye;

N 32° 48.806' E 34° 59.182' (Haifa)

SUPPORT**Tanker**

Callsign	TCN	Freq	ALT	TAS
ARCO 2	41Y	360.8	FL220	400
	Pos	ARCO2: (N3653 E03452)		
TEXACO 2	44Y	244.78	FL150	250
	Pos	TEXACO2: (N3424 E03403)		

AWACS

Callsign	Freq	ALT	Pos
OVERLORD2	377.8	FL320	N3713 E03643 - N3714 E03749

RADIO CHANNELS

#	Freq	Name
1		Flight/Squadron specific
2	288.2	Akrotiri ATIS
3	240.1	Akrotiri Ground
4	339.85	Aktrotiri Tower
5	335.05	Akrotiri Approach
6	360.1	Incirlik Tower
7	371.35	Incirlik Ground
8	377.475	Incirlik ATIS
9		No Preset
10	127.3	Paphos ATIS
11	353.8	Paphos Tower
12	304.0	CVN-73 George Washington
13	302.0	LHA-1 Tarawa
14	259.0	CV-59 Forrestal
15		No Preset
16	377.8	Overlord
17	265.0	KC-135 Texaco-1 medium/slow
18	319.8	KC-135 Arco-1
19	360.8	KC-135MPRS Arco-2
20	256.0	S-3B Recovery Tanker

RAMROD

0	1	2	3	4	5	6	7	8	9
H	O	L	S	T	E	R	I	N	G

KTC 1400 C

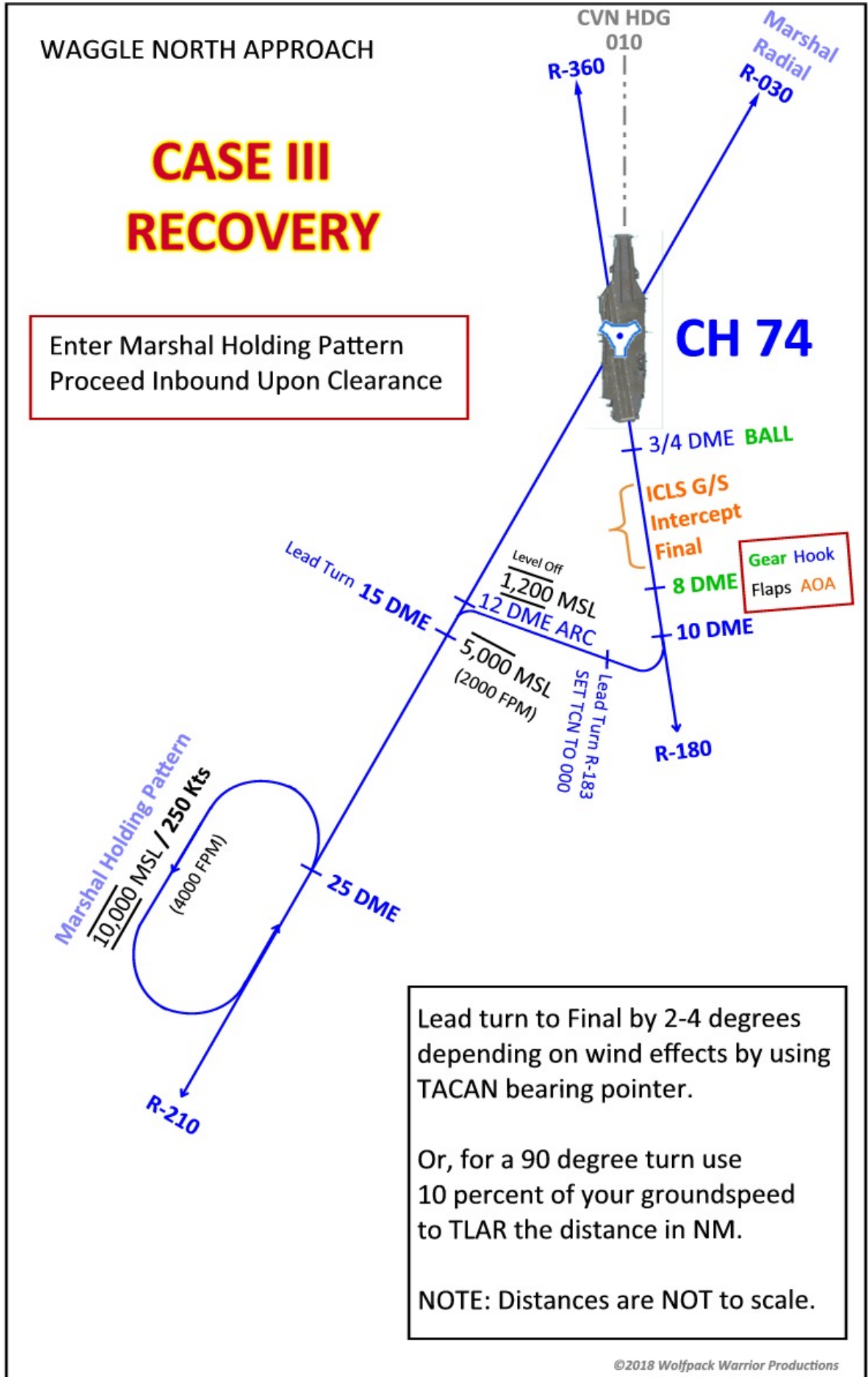
	0	1	2	3	4	5	6	7	8	9
A	FVKD	AXR	YTW	OS	PQ	NHM	CL	UB	GJ	EI
B	YNFA	DSP	WJG	CB	EI	HUK	QM	VR	TL	OX
C	OUPS	YBI	WFN	HC	QM	ATL	XR	EG	JK	VD
D	CABW	GFY	DUQ	OI	ES	RTJ	VK	HN	XL	MP
E	GTDH	VOU	XSJ	ML	RI	BWK	YC	FN	PA	EQ
F	HWMJ	NST	XBP	VY	CE	QID	LF	GR	UA	KO
G	BUSM	HRV	PGD	NL	IW	OFA	TY	CE	XQ	JK
H	RNEB	HXO	VLT	MG	WJ	KYS	FC	DU	AQ	IP
I	LAYK	VHQ	FSM	RG	CP	JNT	WE	DO	UB	IX
J	ADHY	XUI	GEM	BT	CJ	FSR	WL	OK	NV	QP
K	IBET	YQG	HRM	NL	UF	JDX	OA	SP	KW	VC
L	WMOI	RGY	TJS	XB	VP	EKU	LQ	FA	HN	DC
M	LQDT	SVU	PBX	YI	JK	MRW	GE	FA	CO	HN
N	TMCW	OQU	BLV	XR	PS	FJH	DN	YG	EI	AK
O	XYNG	KCQ	SJB	UO	FP	RDI	LM	WH	TA	EV
P	WLGB	VUY	KNJ	MA	QP	SXF	DT	HE	OC	RI
Q	ILGF	YTW	RJX	DV	OH	BNM	KQ	SC	UE	PA
R	XLDJ	AFC	WTO	HP	UM	VNG	BQ	RS	KE	IY
S	MOXN	CJK	IEW	AH	UP	QBL	YF	SV	DT	GR
T	GYIE	DMK	WNA	OL	CR	PHB	SU	XF	QT	JV
U	KLXT	RAU	MPF	OC	IY	JEV	GW	QD	SH	NB
V	GOFP	YUI	LDH	KN	MQ	WJA	RC	TB	EV	SX
W	GXPA	BKQ	VLC	WD	MO	FIN	TR	EJ	US	YH
X	PAIN	KQX	GSC	BY	LJ	DHO	VW	UR	ME	TF
Y	SGWP	VKL	FMD	TE	IN	BYC	HU	RX	OA	QJ

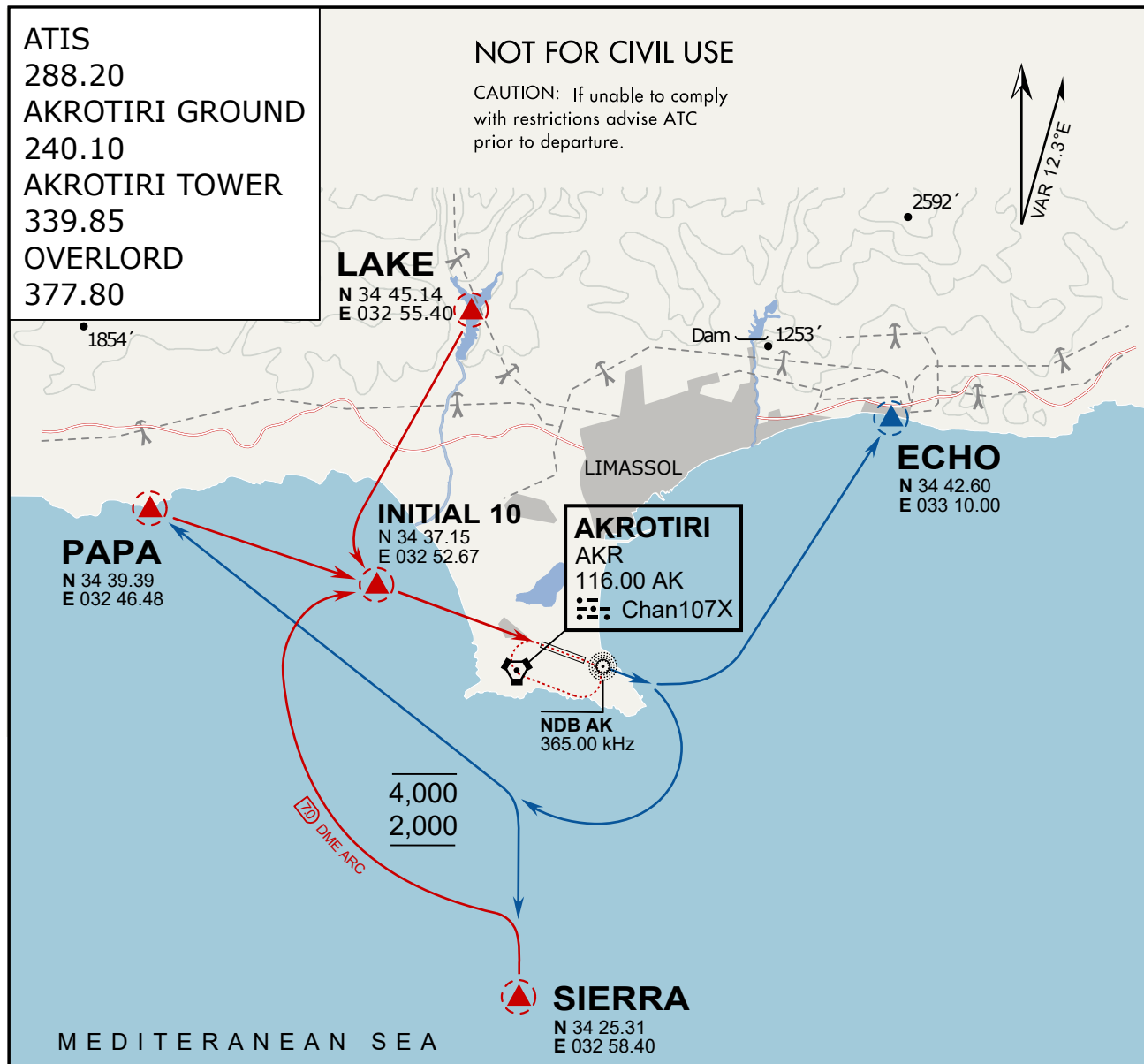
NAVAIDS

Id	Name	Channel	Position	Elevation
DAN	Incirlik	21	N37 00.950 E035 26.883	243
AKR	Akrotiri	107	N34 34.765 E032 57.769	147
PHA	Paphos	79	N34 42.997 E032 28.963	35
RMD	Ramat David	84	N32 39.892 E035 11.265	136
OS66	Kuweires Military Aviation Institute	36	N36 11.362 E037 34.226	1200









ARR / DEP ROUTE DESCRIPTION

ARRIVAL GENERAL

Pass Entry at 5.000' or below. Overhead Brake RWY 10: pass INITIAL 10 at 2.000' MSL.
Straight-in RWY 10 : pass INITIAL 1.500' or below.

ARR RWY10 PAPA / LAKE: Direct initial.

ARR RWY10 SIERRA: Intercept ARC 7 of AKR to INITIAL 10.

ARR ECHO: no ENTRY.

DEPARTURE GENERAL

Pass Departure end of runway at 1.000' AGL or below. Keep RWY heading until coastline.

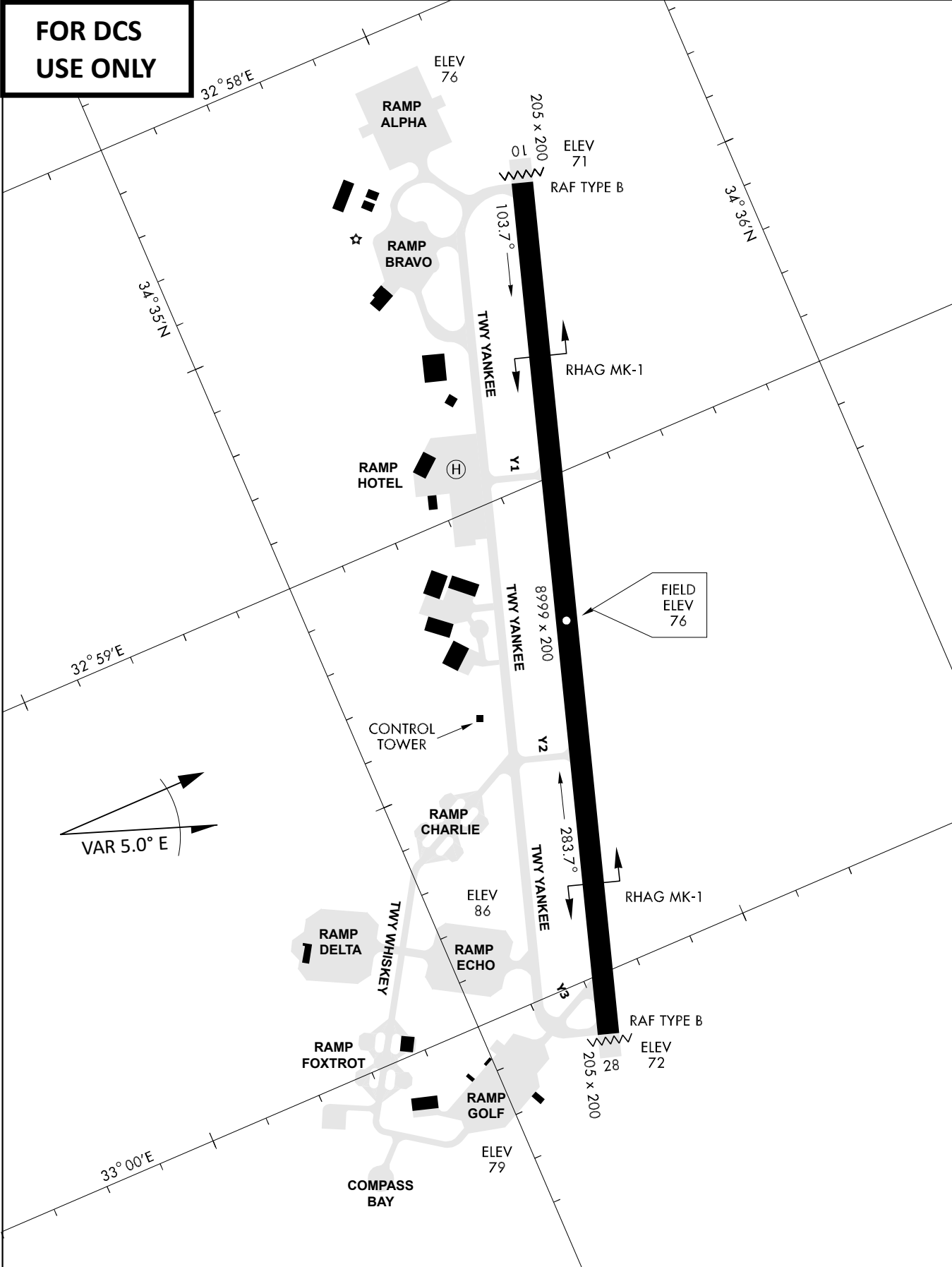
DEP RWY10 ECHO: Direct EXIT.

DEP RWY10 SIERRA: Climbing right turn, intercept R180 AKR to Sierra.

DEP RWY10 PAPA: Climbing right turn until R180 AKR, then direct Papa

DEP LAKE: no EXIT.

**FOR DCS
 USE ONLY**



ATIS	AKROTIRI GND	AKROTIRI TWR	OVERLORD CONTROL	TACAN	FIELD ELEVATION
288.20 MHz	240.10 122.10	339.85 130.075	377.8	AKR 107X	75 [ft] 23 [m]