

MISSION DATA CARD

OPORD		Callsign		Mission		Date/Time		
2641/2024		Edelweiss 4		Training		111000FEB24		
Task	EXPERIMENT					Freq		
AO	Akrotiri					132.25		
Departure				Recovery				
RWY10 VFR				RWY28 VFR				
#	Callsign		Pilot		IFF	TCN	LSR	NET

LOADOUT

A/A		GUN	
A/G		CHF	
POD		FLR	
TKS		FUEL	

TOLD

	Takeoff	Target	Joker	Bingo	Land
FUEL	11087				

AIRBASES

	Name	TCN	ATIS	GND	TWR	RWY	Elev	ILS
Dep	Akrotiri AFB	107X	288.2	240.1	339.85	28	62	109.7
Arr	Akrotiri AFB	107X	288.2	240.1	339.85	28	62	109.7
Div	Paphos Internationl	79X	127.3		353.8	29	40	108.9

COMMS

Radio	Usage
1	132.15
2	2-4-16-2-4

RADIO CHANNELS

#	Freq	Name
1		Flight/Squadron specific
2	288.2	Akrotiri ATIS
3	240.1	Akrotiri Ground
4	339.85	Aktrotiri Tower
5	335.05	Akrotiri Approach
6	360.1	Incirlik Tower
7	371.35	Incirlik Ground
8	377.475	Incirlik ATIS
9		No Preset
10	127.3	Paphos ATIS
11	353.8	Paphos Tower
12	304.0	CVN-73 George Washington
13	302.0	LHA-1 Tarawa
14	259.0	CV-59 Forrestal
15		No Preset
16	377.8	Overlord
17	265.0	KC-135 Texaco-1 medium/slow
18	319.8	KC-135 Arco-1
19	360.8	KC-135MPRS Arco-2
20	256.0	S-3B Recovery Tanker

RAMROD

0	1	2	3	4	5	6	7	8	9
W	O	M	A	N	L	I	E	S	T

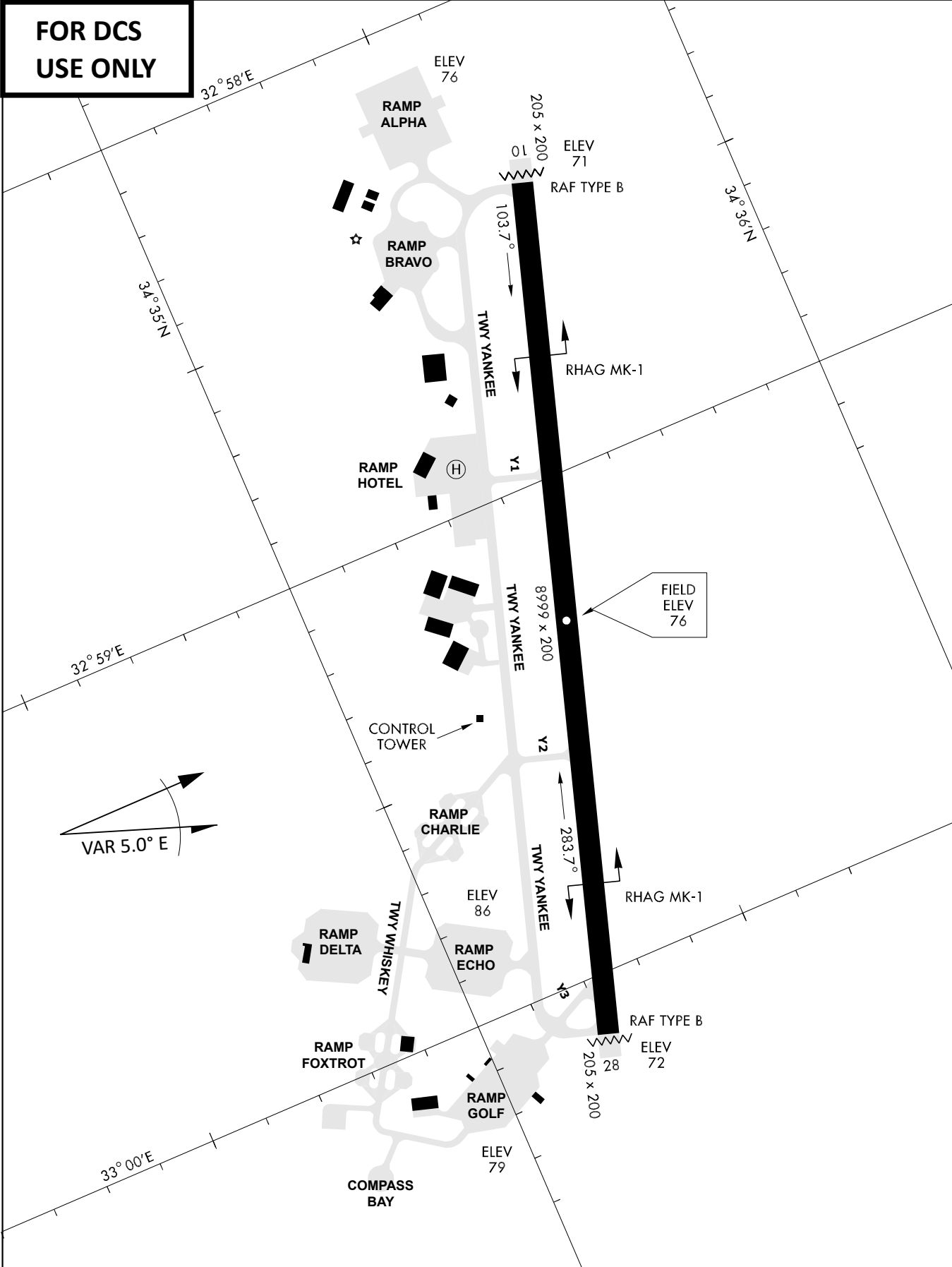
KTC 1400 C

	0	1	2	3	4	5	6	7	8	9
A	NWOI	EMV	FXD	BL	KC	SRY	TU	QJ	AH	GP
B	YTIR	PQU	FHD	JS	MX	WEC	KG	VB	AL	NO
C	TFSO	PCE	UKW	NH	RY	GAJ	BX	VL	QI	DM
D	FSTE	GQB	WLX	JY	MA	HKD	IV	UC	NO	RP
E	MYQN	TRW	OXB	CE	HL	IUV	KG	FS	DA	PJ
F	EUGQ	WNH	DMI	VC	YJ	PTA	BS	FK	RX	OL
G	WTLV	KAY	PXD	SR	QB	NUJ	OM	EI	FG	HC
H	AJEI	PCO	RBL	NQ	TF	HMV	WX	US	DG	YK
I	KQNJ	LRT	XEV	FG	HA	DOP	UM	BY	SI	WC
J	AHJK	PEQ	ORN	CF	MY	SVU	TI	XD	LB	WG
K	CNWT	HUB	GYQ	XI	EF	ROD	MA	VP	LJ	SK
L	XKVD	BGR	TLW	JM	SO	PQE	HU	FN	YA	IC
M	OUJV	FWT	CBQ	EX	KH	SAI	LG	DM	PN	RY
N	MUJW	HTS	QGL	DI	EC	RFV	BP	YN	KX	OA
O	WSFG	QNH	PLM	AY	CU	JDT	IK	OB	VX	RE
P	EIMV	TDJ	QYA	HU	CG	KWB	OP	XR	LS	FN
Q	QBCG	VDT	NLM	XS	UY	OWF	PK	HA	RJ	EI
R	UHNA	YFV	WRL	EK	PB	IGO	XJ	DQ	ST	CM
S	GNHL	PXM	JWE	TF	BK	VAU	OD	CY	RI	QS
T	CBWR	HNP	ELU	KI	GO	TVA	DX	YM	FQ	SJ
U	VOTJ	DBI	GUC	SY	XK	FAM	QL	NP	WE	RH
V	PNLI	EDM	GOS	AU	KV	JYB	RT	QF	XH	CW
W	ETLM	HQW	JGC	KF	AI	NYS	VR	PO	BX	UD
X	HARB	CWE	FNJ	TK	UL	YGV	QS	IP	DM	XO
Y	LECH	TJW	KDV	NP	YG	RMU	QA	IX	BS	OF

NAVAIDS

Id	Name	Channel	Position	Elevation
DAN	Incirlik	21	N37 00.950 E035 26.883	243
AKR	Akrotiri	107	N34 34.765 E032 57.769	147
PHA	Paphos	79	N34 42.997 E032 28.963	35
RMD	Ramat David	84	N32 39.892 E035 11.265	136
OS66	Kuweires Military Aviation Institute	36	N36 11.362 E037 34.226	1200

**FOR DCS
 USE ONLY**



ATIS	AKROTIRI GND	AKROTIRI TWR	OVERLORD CONTROL	TACAN	FIELD ELEVATION
288.20 MHz	240.10 122.10	339.85 130.075	377.8	AKR 107X	75 [ft] 23 [m]

ATIS

288.20

AKROTIRI GROUND

240.10

AKROTIRI TOWER

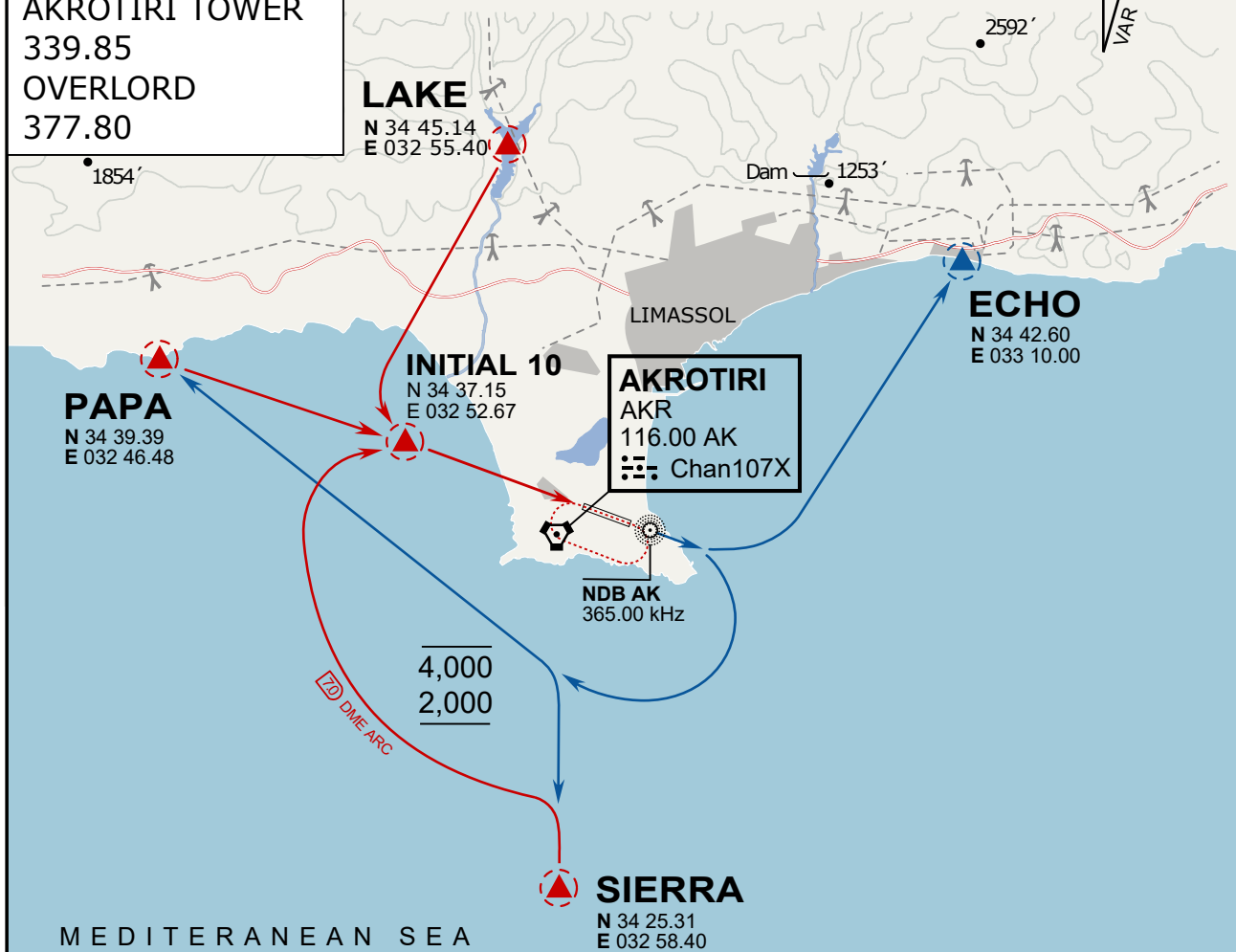
339.85

OVERLORD

377.80

NOT FOR CIVIL USE

CAUTION: If unable to comply with restrictions advise ATC prior to departure.



ARR / DEP ROUTE DESCRIPTION

ARRIVAL GENERAL

Pass Entry at 5.000' or below. Overhead Brake RWY 10: pass INITIAL 10 at 2.000' MSL.
Straight-in RWY 10 : pass INITIAL 1.500' or below.

ARR RWY10 PAPA / LAKE: Direct initial.

ARR RWY10 SIERRA: Intercept ARC 7 of AKR to INITIAL 10.

ARR ECHO: no ENTRY.

DEPARTURE GENERAL

Pass Departure end of runway at 1.000' AGL or below. Keep RWY heading until coastline.

DEP RWY10 ECHO: Direct EXIT.

DEP RWY10 SIERRA: Climbing right turn, intercept R180 AKR to Sierra.

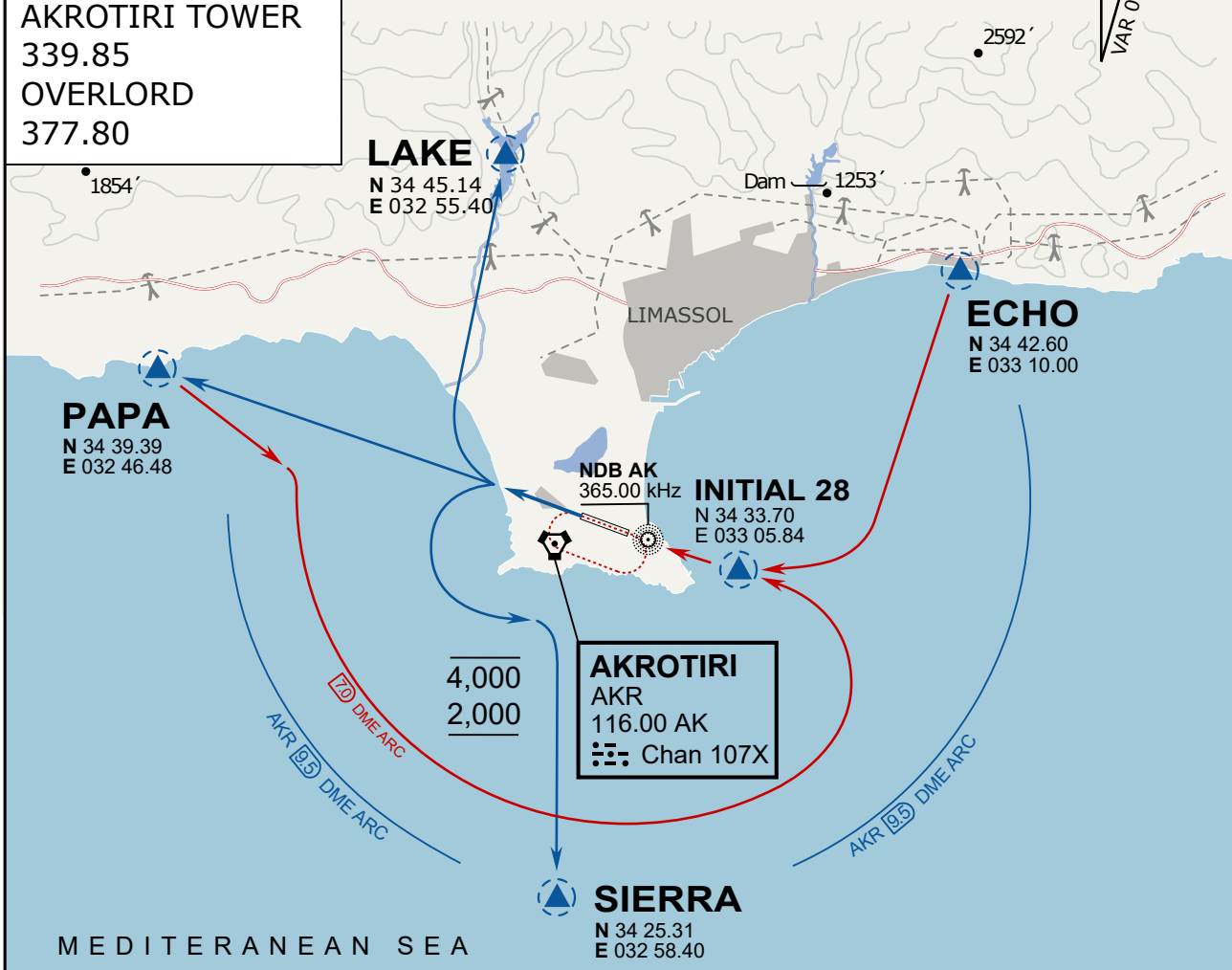
DEP RWY10 PAPA: Climbing right turn until R180 AKR, then direct Papa

DEP LAKE: no EXIT.

ATIS
 288.20
AKROTIRI GROUND
 240.10
AKROTIRI TOWER
 339.85
OVERLORD
 377.80

NOT FOR CIVIL USE

CAUTION: If unable to comply
 with restrictions advise ATC
 prior to departure.



ARR / DEP ROUTE DESCRIPTION

STRAIGHT-IN RWY28

Pass ENTRY at 5.000' MSL or below, pass INITIAL at 1.500' MSL or below.

OVERHEAD BREAK RWY28

Pass ENTRY at 5.000' MSL or below, pass INITIAL at 2.000' MSL, break to the south.

DEPARTURE GENERAL

Pass Departure end of runway at 1.000' or below.

DEP RWY28 PAPA: Fly straight ahead to exit.

DEP RWY28 LAKE: Fly straight ahead until coast, than right turn direct exit.

DEP RWY28 SIERRA: Fly straight ahead until coastline, then climbing left turn, intercept AKR R-180 to exit.

DEP ECHO: no exit.

NOT AVAILABLE

NOT AVAILABLE