

MISSION DATA CARD

| | | | | | | | | |
|-----------|-------------|-----------|-------------|-----------|------|-------------|------|-----|
| OPORD | | Callsign | | Mission | | Date/Time | | |
| 2401/2023 | | Nazgul* 6 | | Training | | 202000NOV23 | | |
| Task | | | | | | Freq | | |
| AO | | | | | | 261.25 | | |
| Departure | | | | Recovery | | | | |
| RWY28 VFR | | | | RWY10 VFR | | | | |
| # | Callsign | | Pilot | | IFF | TCN | LSR | NET |
| -1 | Nazgul* 6-1 | | Striver/Uta | | 1101 | 21Y | 1561 | |
| -2 | Nazgul* 6-2 | | Razorback | | 1102 | 84Y | 1562 | |
| -3 | Nazgul* 6-3 | | Repsus/TaB | | 1103 | 84X | 1563 | |

LOADOUT

| | | | | | | | |
|-----|----------------|--|--|--|--|------|----------------|
| A/A | 6xA120C, 2xA9M | | | | | GUN | 100% SAPHEI |
| A/G | | | | | | CHF | 240 |
| POD | TGT, NAV | | | | | FLR | 0 |
| TKS | 2xFT610 | | | | | FUEL | 100% |

TOLD

| | | | | | |
|------|---------|--------|-------|-------|------|
| | Takeoff | Target | Joker | Bingo | Land |
| FUEL | 30518 | | | | |

AIRBASES

| | | | | | | | | |
|-----|--------------|------|--------------------|--------|--------|-----|------|-------|
| | Name | TCN | ATIS | GND | TWR | RWY | Elev | ILS |
| Dep | Akrotiri AFB | 107X | 288.2 | 240.1 | 339.85 | 28 | 62 | 109.7 |
| Arr | Akrotiri AFB | 107X | 288.2 | 240.1 | 339.85 | 28 | 62 | 109.7 |
| Div | Incirlik AFB | 21X | $\frac{377.47}{5}$ | 371.35 | 360.1 | 5 | 190 | |

SUPPORT**Tanker**

| Callsign | TCN | Freq | ALT | TAS |
|----------|-----|-------------------------|-------|-----|
| TEXACO 1 | 71Y | 265.0 | FL170 | 300 |
| | Pos | TEXACO1: (N3657 E03434) | | |
| ARCO 1 | 22Y | 319.8 | FL222 | 400 |
| | Pos | ARCO1: (N3701 E03457) | | |
| SHELL 3 | 93Y | 278.75 | FL170 | 215 |
| | Pos | SHELL3: (N3436 E03419) | | |

AWACS

| Callsign | Freq | ALT | Pos |
|-----------|-------|-------|-----------------------------|
| OVERLORD2 | 377.8 | FL320 | N3713 E03643 - N3714 E03749 |

OTHER FLIGHTS

| Callsign | Mission | Airframe | Freq | TCN | Grpld | Laser |
|-------------|--------------------|--------------|----------------------|-------|-------|-------|
| Vanguard 1 | Training | 1x AV-8B N/A | 264.55 | 21/84 | | 168X |
| AO | AKAMAS | Task | Bombing Training | | | |
| Raptor 1 | Training | 4x F-16C | 134.0 | 21/84 | | 156X |
| AO | SA2 Training Range | Task | SEAD Harm POS/EOM | | | |
| Edelweiss 6 | Training | 4x A-10C | 134.65 | 21/84 | 35 | 156X |
| AO | | Task | Bomb Training | | | |
| Raptor 2 | Training | 4x F-16C | 134.25 | 21/84 | | 156X |
| AO | SA2 Training Range | Task | SEAD Harm POS/EOM | | | |
| T-Rex 2 | Training | 4x A-10C | 132.25 | 21/84 | 25 | 156X |
| AO | SW Cyprus | Task | Emergency Procedures | | | |

RADIO CHANNELS

| # | Freq | Name |
|----|---------|-----------------------------|
| 1 | | Flight/Squadron specific |
| 2 | 288.2 | Akrotiri ATIS |
| 3 | 240.1 | Akrotiri Ground |
| 4 | 339.85 | Aktrotiri Tower |
| 5 | 335.05 | Akrotiri Approach |
| 6 | 360.1 | Incirlik Tower |
| 7 | 371.35 | Incirlik Ground |
| 8 | 377.475 | Incirlik ATIS |
| 9 | | No Preset |
| 10 | 127.3 | Paphos ATIS |
| 11 | 353.8 | Paphos Tower |
| 12 | 304.0 | CVN-73 George Washington |
| 13 | 302.0 | LHA-1 Tarawa |
| 14 | 259.0 | CV-59 Forrestal |
| 15 | | No Preset |
| 16 | 377.8 | Overlord |
| 17 | 265.0 | KC-135 Texaco-1 medium/slow |
| 18 | 319.8 | KC-135 Arco-1 |
| 19 | 360.8 | KC-135MPRS Arco-2 |
| 20 | 256.0 | S-3B Recovery Tanker |

RAMROD

| | | | | | | | | | |
|---|---|---|---|---|---|---|---|---|---|
| 0 | 1 | 2 | 3 | 4 | 5 | 6 | 7 | 8 | 9 |
| P | I | T | C | H | F | O | R | K | S |

KTC 1400 C

| | 0 | 1 | 2 | 3 | 4 | 5 | 6 | 7 | 8 | 9 |
|---|------|-----|-----|----|----|-----|----|----|----|----|
| A | OKLN | FYB | UDH | XT | EM | QAI | PJ | VC | SW | GR |
| B | QDRL | JYE | BSG | HV | FK | IPO | AT | WM | UN | CX |
| C | FBWT | XLN | UGV | SR | DI | OEQ | YH | JK | MA | PC |
| D | XKBT | SAD | WOR | IY | QM | JGP | FL | UC | EV | NH |
| E | EKJD | PBU | RYV | FX | GA | COS | QN | WT | HI | LM |
| F | OJXC | YWI | QVT | PM | RS | GHL | EN | UK | DF | BA |
| G | JPMH | LBQ | KWD | XO | EY | AGS | NI | VU | TC | FR |
| H | BTDK | EWP | AVY | FS | QU | XLR | CN | OI | HJ | MG |
| I | QFGS | API | RXD | CN | VY | KOW | BH | TL | EM | JU |
| J | FXPO | UKH | GWS | YD | IQ | EBR | JM | CV | TL | NA |
| K | FIUO | QRE | DKC | JA | HG | VYM | PL | NS | TX | BW |
| L | FVIL | BRA | YKG | UE | HD | TJO | NP | WS | QM | XC |
| M | MHPF | KIG | TNW | VS | LE | OXJ | QD | RB | UA | YC |
| N | JRTC | HAP | KXE | DB | NI | OGL | MU | WF | SV | QY |
| O | WHRJ | BTG | PUN | SM | AL | EFC | XO | YK | DQ | IV |
| P | NOUQ | LPC | EKV | WT | RY | MJS | BD | GA | IX | HF |
| Q | PJOG | CWY | QIT | LX | SU | HKD | BN | FE | MA | RV |
| R | VUWK | EFH | ALR | GM | IX | SNO | DY | QC | JT | BP |
| S | QPDV | AGC | URX | MW | TS | JNL | IO | EB | YH | KF |
| T | YQMS | APH | FRG | KB | XT | NIJ | WE | UC | LO | VD |
| U | WCUM | PNG | VQI | SJ | XY | TRH | FK | EA | LO | BD |
| V | BLRW | CDM | AIY | FP | ES | NHV | KT | JQ | UX | GO |
| W | JLBG | IOP | YQA | RT | ND | UFS | CE | KW | MH | XV |
| X | OAPJ | LMR | CGN | SX | KI | BTE | WY | DH | VF | UQ |
| Y | PYQO | GHE | KXI | WM | CT | UJR | VD | BN | LA | FS |

NAVAIDS

| Id | Name | Channel | Position | Elevation |
|-----------|---|----------------|------------------------|------------------|
| DAN | Incirlik | 21 | N37 00.950 E035 26.883 | 243 |
| AKR | Akrotiri | 107 | N34 34.765 E032 57.769 | 147 |
| PHA | Paphos | 79 | N34 42.997 E032 28.963 | 35 |
| RMD | Ramat David | 84 | N32 39.892 E035 11.265 | 136 |
| OS66 | Kuweires Military Aviation Institute | 36 | N36 11.362 E037 34.226 | 1200 |

**FOR DCS
 USE ONLY**

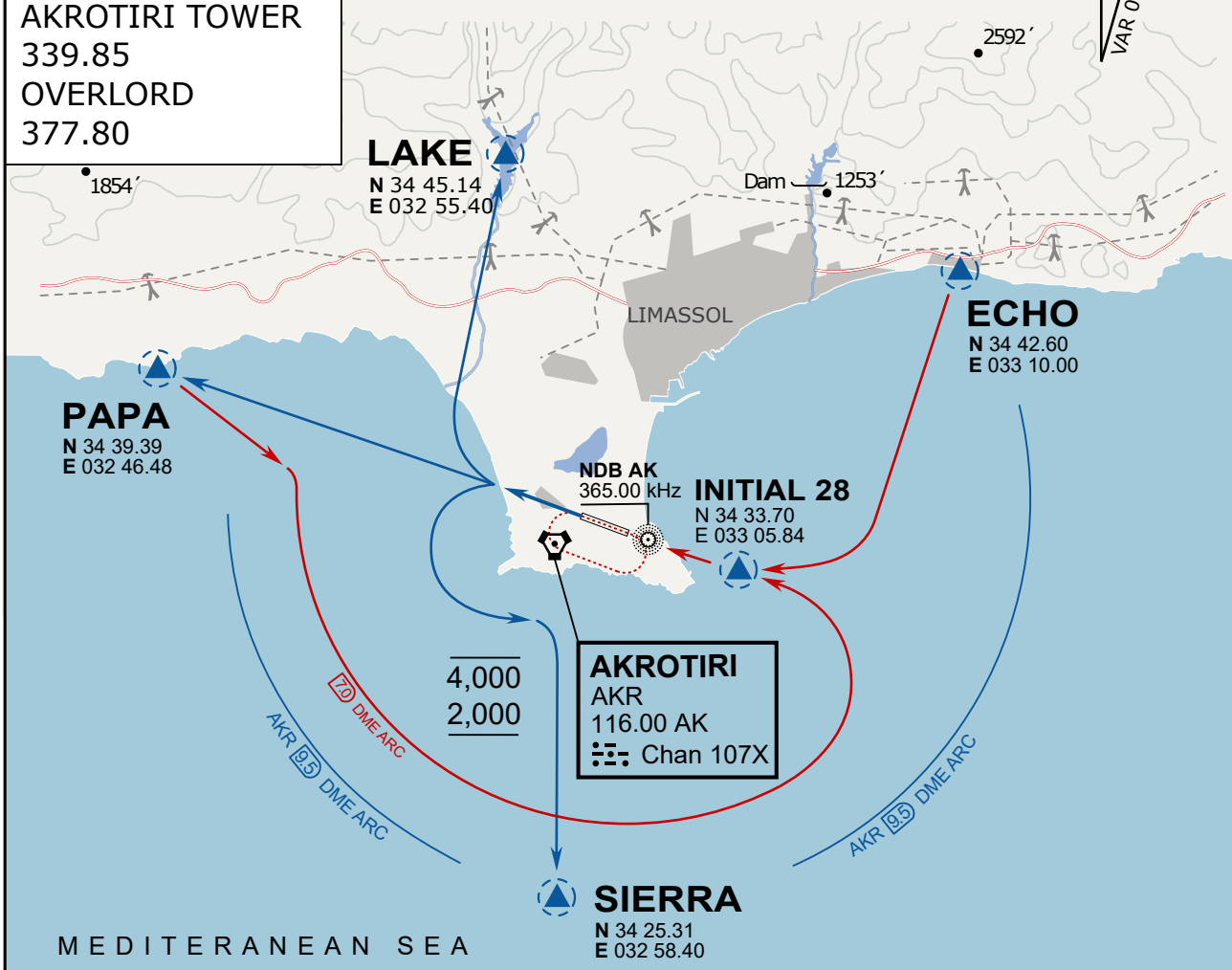


| ATIS | AKROTIRI GND | AKROTIRI TWR | OVERLORD CONTROL | TACAN | FIELD ELEVATION |
|------------|-----------------|------------------|------------------|----------|-----------------------|
| 288.20 MHz | 240.10 122.10 | 339.85 130.075 | 377.8 | AKR 107X | 75 [ft] 23 [m] |

ATIS
 288.20
AKROTIRI GROUND
 240.10
AKROTIRI TOWER
 339.85
OVERLORD
 377.80

NOT FOR CIVIL USE

CAUTION: If unable to comply
 with restrictions advise ATC
 prior to departure.



ARR / DEP ROUTE DESCRIPTION

STRAIGHT-IN RWY28

Pass ENTRY at 5.000' MSL or below, pass INITIAL at 1.500' MSL or below.

OVERHEAD BREAK RWY28

Pass ENTRY at 5.000' MSL or below, pass INITIAL at 2.000' MSL, break to the south.

DEPARTURE GENERAL

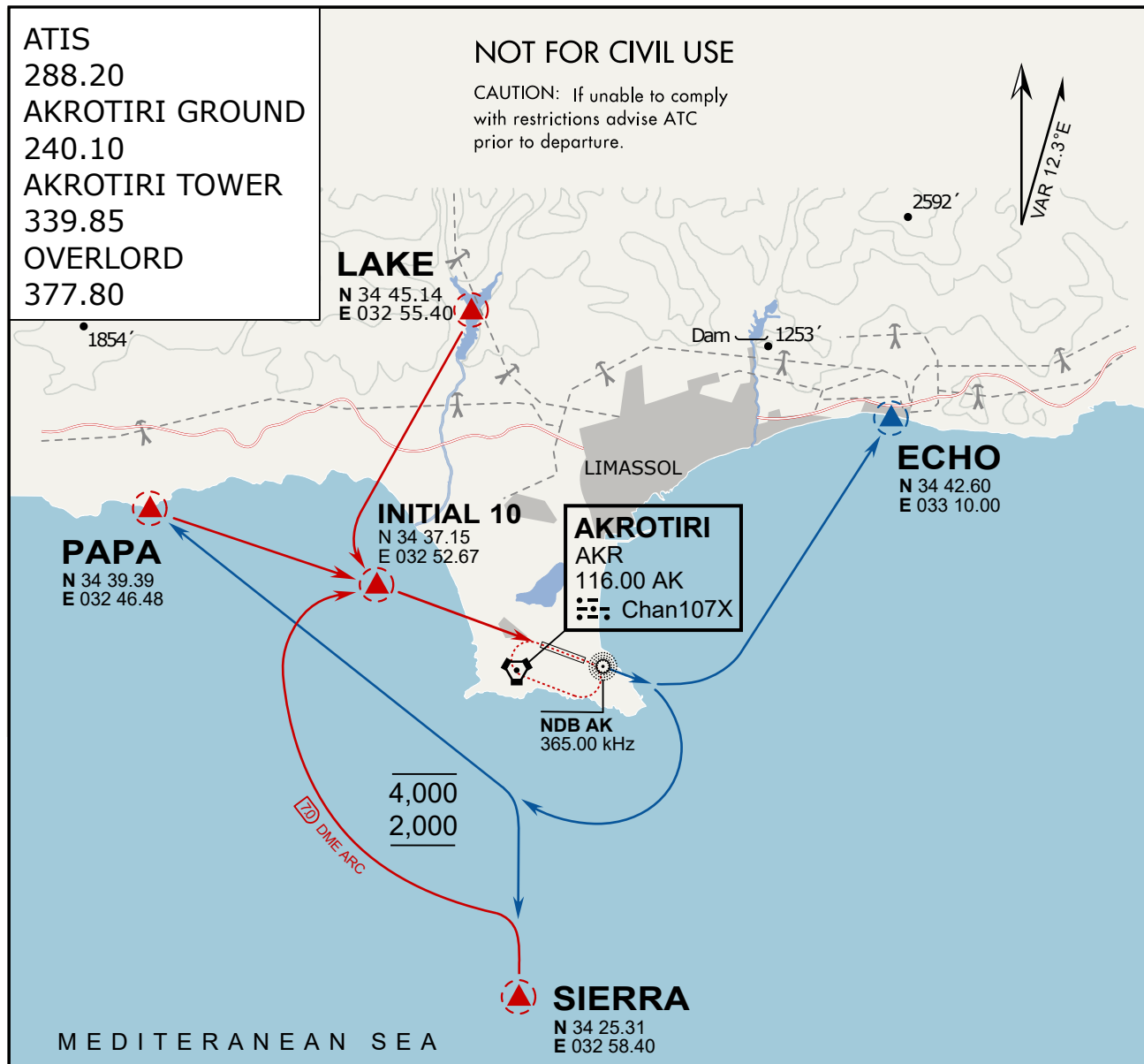
Pass Departure end of runway at 1.000' or below.

DEP RWY28 PAPA: Fly straight ahead to exit.

DEP RWY28 LAKE: Fly straight ahead until coast, than right turn direct exit.

DEP RWY28 SIERRA: Fly straight ahead until coastline, then climbing left turn, intercept AKR R-180 to exit.

DEP ECHO: no exit.



ARR / DEP ROUTE DESCRIPTION

ARRIVAL GENERAL

Pass Entry at 5.000' or below. Overhead Brake RWY 10: pass INITIAL 10 at 2.000' MSL.
Straight-in RWY 10 : pass INITIAL 1.500' or below.

ARR RWY10 PAPA / LAKE: Direct initial.

ARR RWY10 SIERRA: Intercept ARC 7 of AKR to INITIAL 10.

ARR ECHO: no ENTRY.

DEPARTURE GENERAL

Pass Departure end of runway at 1.000' AGL or below. Keep RWY heading until coastline.

DEP RWY10 ECHO: Direct EXIT.

DEP RWY10 SIERRA: Climbing right turn, intercept R180 AKR to Sierra.

DEP RWY10 PAPA: Climbing right turn until R180 AKR, then direct Papa

DEP LAKE: no EXIT.

ATIS
377.475 (#8)

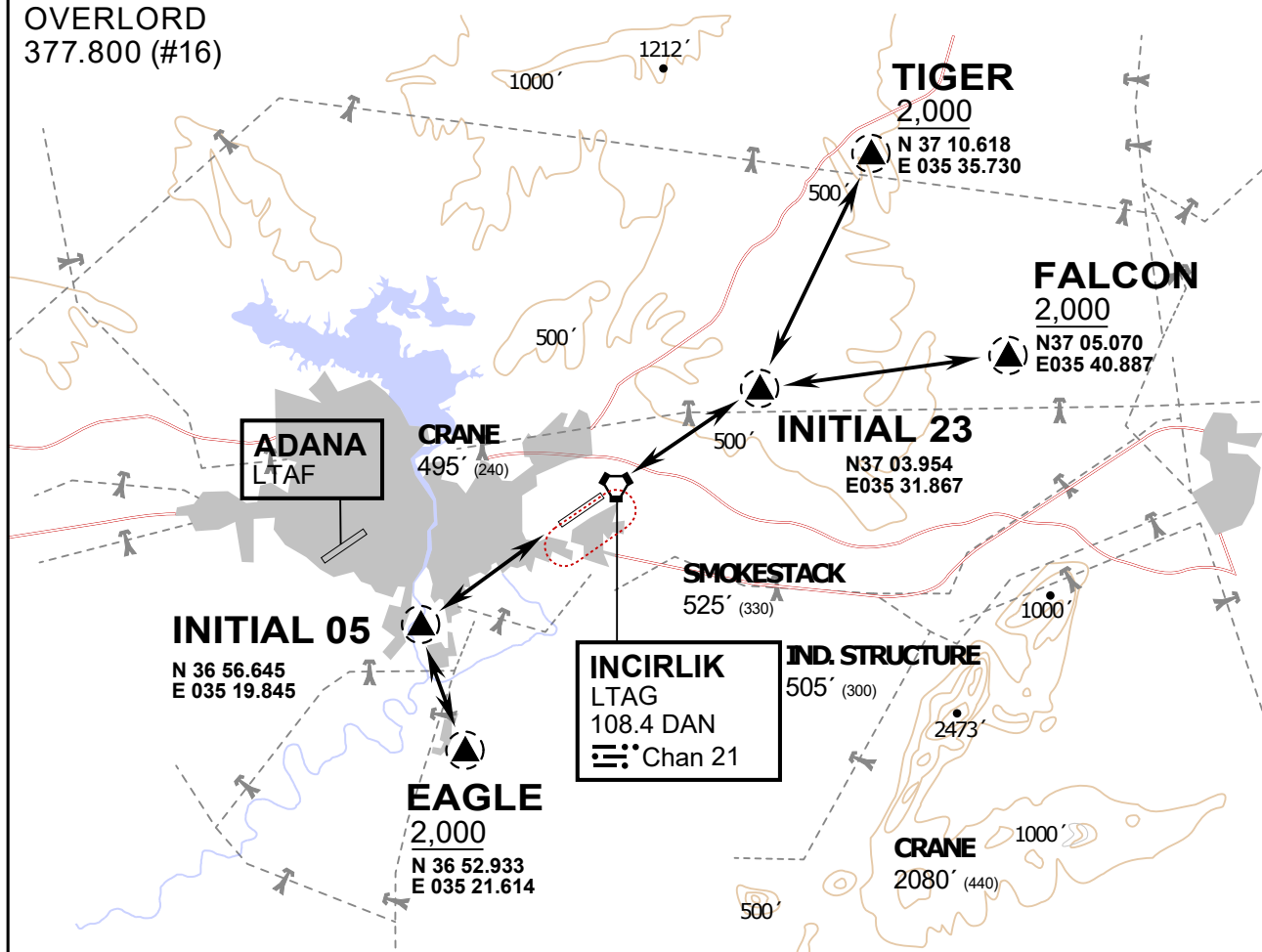
INCIRLIK GROUND
371.3500 (#7)

INCIRLIK TOWER
360.100 (#6)

OVERLORD
377.800 (#16)

NOT FOR CIVIL USE

CAUTION: If unable to comply
with restrictions advise ATC
prior to departure.



vJaBoG32 ETTR NAV CHART



ARR / DEP ROUTE DESCRIPTION

STRAIGHT-IN RWY 05 / 23

Pass entry EAGLE / TIGER / FALCON at 2000' and INITIAL at 1500'

OVERHEAD BREAK RWY 05 / 23

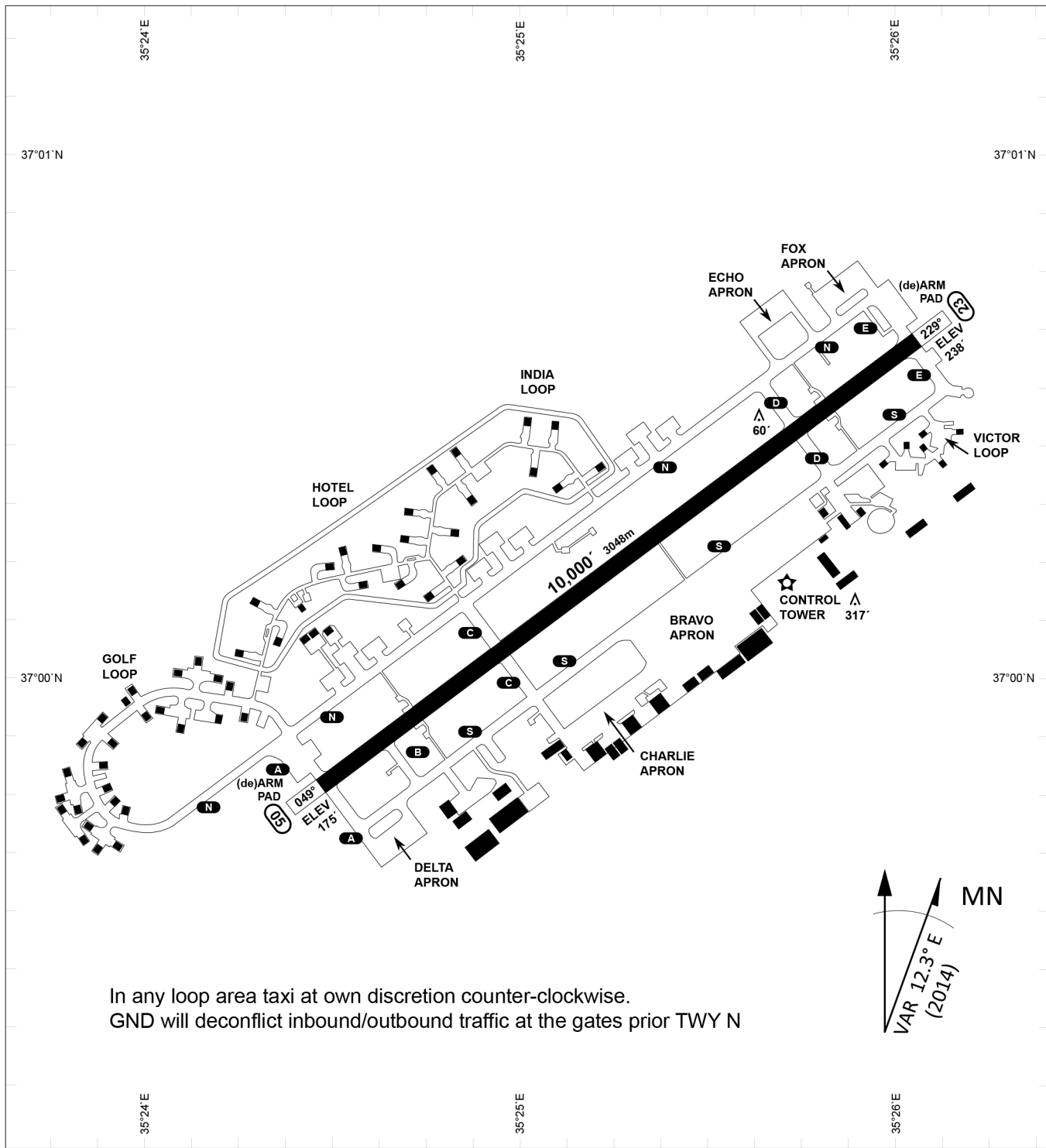
Pass entry EAGLE / TIGER / FALCON at 2500',
pass INITIAL at 2000' break to the south at 2000' pattern altitude.

HELICOPTER ROUTES

Pass entry EAGLE / TIGER / FALCON at 1000' or below, pass INITIAL at 1000' break to the south at 1000' pattern altitude.

DEPARTURE ALL DIRECTIONS

pass DER below 1500ft



In any loop area taxi at own discretion counter-clockwise.
 GND will deconflict inbound/outbound traffic at the gates prior TWY N

| PAR | RWY | CAT | MINIMA | ARP | ELEV | Scale 1:35'500 |
|-----|-----|---------|------------------------------------|-----------------------------------|-----------|--|
| | 21L | A B D E | 2057 - 0.8 200 (200-0.8/1.6) GS 3° | 37°0'56.000" N 35°26'53.000" E | 1857 [ft] | 0 300 600 900 1200 1500 [m] 0 1000 2000 3000 4000 5000 [ft] |
| | 3R | A B D E | 2057 - 0.8 200 (200-0.8/1.6) GS 3° | | 566 [m] | |
| SRA | 21R | A C D E | 2257 - 1.2 350 (350-1.2/1.6) | | | |
| | 3L | A C D E | 2257 - 1.2 350 (350-1.2/1.6) | | | |

| RWY | TORA | TORA from D | TORA from B | COURSE | PSN THR | ALS |
|-----|----------------------|---------------------|---------------------|--------|--------------------------|-----|
| 23 | 10,000 [ft] 3048 [m] | 8,000 [ft] 2438 [m] | | 235° | 37°00.611'N 035°26.368'E | ⊙ |
| 05 | 10,000 [ft] 3048 [m] | | 9,000 [ft] 2743 [m] | 055° | 36°59.043'N 035°24.760'E | ⊙ |

| ATIS | INCIRLIK GROUND | INCIRLIK TOWER | CONTROL | TACAN | ILS RWY 05 | ILS RWY 23 |
|---------|-------------------|-------------------|---------|--------|------------|------------|
| 377.475 | 371.350 123.020 | 360.100 121.100 | 337.800 | DAN21x | 109.3MHz | 111.7MHz |