

MISSION DATA CARD

OPORD		Callsign		Mission		Date/Time		
2400/2023		Raptor 1		Training		232000NOV23		
Task	SEAD Harm POS					Freq		
AO	SA2 Training Range					134.0		
Departure				Recovery				
RWY10 VFR				RWY28 VFR				
#	Callsign		Pilot		IFF	TCN	LSR	NET
-1	Raptor 1-1		Newbie		1611	21Y	1561	
-2	Raptor 1-2		Woodman		1612	84Y	1562	
-3	Raptor 1-3		Butcher		1613	84X	1563	
-4	Raptor 1-4		Hercules		1614	21X	1564	

LOADOUT

A/A	2xA120C				GUN	100% HEI-T	
A/G	2xA88C				CHF	60	
POD	HTS, A184, TGP				FLR	60	
TKS	2xFT300				FUEL	100%	

TOLD

	Takeoff	Target	Joker	Bingo	Land
FUEL	11169				

AIRBASES

	Name	TCN	ATIS	GND	TWR	RWY	Elev	ILS
Dep	Akrotiri AFB	107X	288.2	240.1	339.85	28	62	109.7
Arr	Akrotiri AFB	107X	288.2	240.1	339.85	28	62	109.7
Div	Paphos Internationl	79X	127.3		353.8	29	40	108.9

FLIGHTPLAN

#	Name	Navaid/Coords/DME	ALT	TOT
1	ECHO	N34 42 31.443 E033 10 00.221	5000	
2	PAPA	N34 39 43.973 E032 49 10.352	5000	
3	DAROS	N35 00 44.958 E033 08 46.780	20000	
4	Gecitkale AB	N35 14 12 E033 43 19	20000	
5	ALSUS	N35 02 05.989 E034 39 23.901	20000	
6	LOSOS	N34 42 35.345 E033 22 11.397	10000	
7	SIERRA	N34 24 35.912 E032 57 53.963	5000	
8	RAF Akrotiri	N34 35 26 E032 59 17	100	

OTHER FLIGHTS

Callsign	Mission	Airframe	Freq	TCN	Grpld	Laser
Vanguard	Training	1x AV-8B N/A	264.55	21/84		167X
AO	TAL SIMAN	Task	FAM FLIGHT			
Nazgul*	Training	4x F-15E	261.25	21/84		156X
AO	AAR North	Task	AAR			
Raptor 2	Training	4x F-16C	134.25	21/84		156X
AO	SA2 Training Range	Task	SEAD HARM POS			
T-Rex 2	Training	4x A-10C	132.25	21/84	25	156X
AO	SW Cyprus	Task	Emergency Procedures			
Edelweiss 6	Training	4x A-10C	134.65	21/84	40	166X
AO		Task	DB			

RADIO CHANNELS

#	Freq	Name
1		Flight/Squadron specific
2	288.2	Akrotiri ATIS
3	240.1	Akrotiri Ground
4	339.85	Aktrotiri Tower
5	335.05	Akrotiri Approach
6	360.1	Incirlik Tower
7	371.35	Incirlik Ground
8	377.475	Incirlik ATIS
9		No Preset
10	127.3	Paphos ATIS
11	353.8	Paphos Tower
12	304.0	CVN-73 George Washington
13	302.0	LHA-1 Tarawa
14	259.0	CV-59 Forrestal
15		No Preset
16	377.8	Overlord
17	265.0	KC-135 Texaco-1 medium/slow
18	319.8	KC-135 Arco-1
19	360.8	KC-135MPRS Arco-2
20	256.0	S-3B Recovery Tanker

RAMROD

0	1	2	3	4	5	6	7	8	9
H	U	M	P	B	A	C	K	E	D

KTC 1400 C

	0	1	2	3	4	5	6	7	8	9
A	NJDY	MSA	XPB	WQ	ER	OLH	GC	VI	UK	TF
B	RSPM	LVD	JOT	GW	UX	QNI	AK	FY	BC	EH
C	TQIR	MGK	XAD	UE	HN	CBV	OW	LS	JF	YP
D	NMRB	FCO	YVS	HQ	IE	GAK	WD	UJ	XL	TP
E	MHSF	TWX	LNE	DU	OP	ACG	RB	KY	VJ	QI
F	DKUS	BWN	XFY	LC	TJ	QRP	MG	VI	HA	OE
G	VNYQ	PHK	ABC	ES	LD	XFU	RG	TI	JM	WO
H	PQBC	REG	VNY	IK	OD	FMS	HU	JA	TX	WL
I	DSYR	CXK	HEO	QW	VP	TAN	JB	FL	MU	IG
J	MRHK	SGQ	DNT	IJ	YB	EVF	PU	AL	XC	WO
K	IEHM	BLY	SAT	CR	NW	OFK	GQ	XJ	DU	PV
L	NYWD	QXC	EKA	OR	MV	BIF	UL	GH	SP	TJ
M	OMLT	NHP	JRF	GY	QK	IDA	WX	EB	SC	VU
N	NBXR	PYJ	LWV	UG	KD	MOT	EA	SF	HQ	CI
O	LCHG	KFJ	YOY	WP	UA	NIT	MX	SB	DE	RQ
P	YPMW	OAL	GKJ	SX	CV	IDN	HU	TB	QF	RE
Q	SVLU	GHF	JXK	PN	YA	IOT	ER	WB	MC	DQ
R	HEBG	UQS	FYL	OC	VJ	IDA	KR	XP	NT	MW
S	TWHC	VER	AND	XM	KO	PLI	SG	UB	FY	QJ
T	YMWB	PEH	KQC	XI	ON	UAG	JT	VD	RL	FS
U	EPHN	TQM	RCS	UO	GV	DJA	BI	YW	FL	XK
V	UAVH	MQW	DSL	IY	GB	CXN	TE	RK	FP	JO
W	AFRI	KLE	HBG	VD	ST	QUO	JX	PM	NC	YW
X	GQVX	MAO	KIN	DP	BR	FET	SJ	HY	CL	UW
Y	GFLM	UBA	WRX	PH	YK	TEN	ID	QV	SO	JC

NAVAIDS

Id	Name	Channel	Position	Elevation
DAN	Incirlik	21	N37 00.950 E035 26.883	243
AKR	Akrotiri	107	N34 34.765 E032 57.769	147
PHA	Paphos	79	N34 42.997 E032 28.963	35
RMD	Ramat David	84	N32 39.892 E035 11.265	136
OS66	Kuweires Military Aviation Institute	36	N36 11.362 E037 34.226	1200

**FOR DCS
 USE ONLY**



ATIS	AKROTIRI GND	AKROTIRI TWR	OVERLORD CONTROL	TACAN	FIELD ELEVATION
288.20 MHz	240.10 122.10	339.85 130.075	377.8	AKR 107X	75 [ft] 23 [m]

ATIS

288.20

AKROTIRI GROUND

240.10

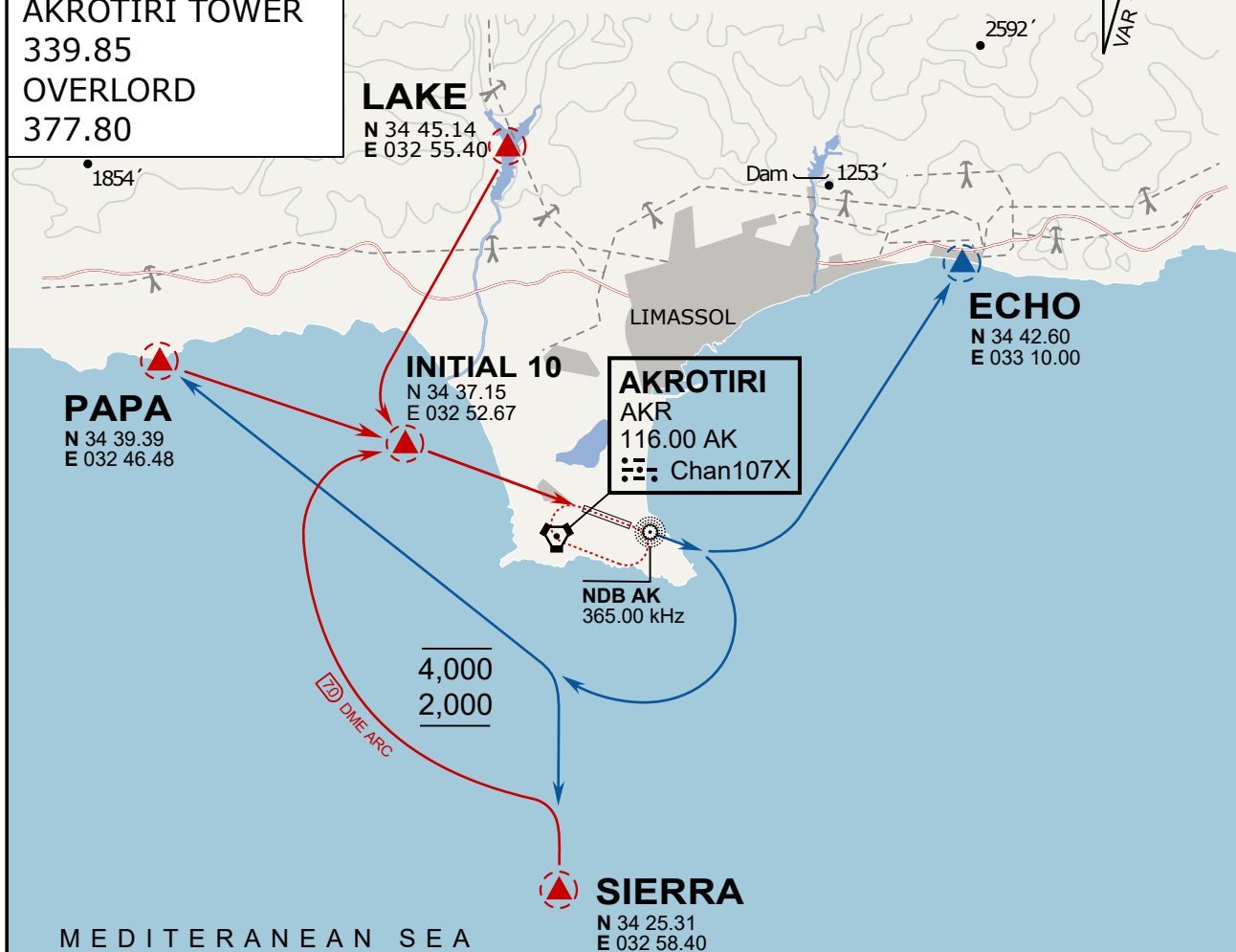
AKROTIRI TOWER

339.85

OVERLORD

377.80

NOT FOR CIVIL USE

CAUTION: If unable to comply
with restrictions advise ATC
prior to departure.

ARR / DEP ROUTE DESCRIPTION

ARRIVAL GENERAL

Pass Entry at 5.000' or below. Overhead Brake RWY 10: pass INITIAL 10 at 2.000' MSL.
Straight-in RWY 10 : pass INITIAL 1.500' or below.

ARR RWY10 PAPA / LAKE: Direct initial.

ARR RWY10 SIERRA: Intercept ARC 7 of AKR to INITIAL 10.

ARR ECHO: no ENTRY.

DEPARTURE GENERAL

Pass Departure end of runway at 1.000' AGL or below. Keep RWY heading until coastline.

DEP RWY10 ECHO: Direct EXIT.

DEP RWY10 SIERRA: Climbing right turn, intercept R180 AKR to Sierra.

DEP RWY10 PAPA: Climbing right turn until R180 AKR, then direct Papa

DEP LAKE: no EXIT.

ATIS
 288.20
AKROTIRI GROUND
 240.10
AKROTIRI TOWER
 339.85
OVERLORD
 377.80

NOT FOR CIVIL USE

CAUTION: If unable to comply
 with restrictions advise ATC
 prior to departure.



ARR / DEP ROUTE DESCRIPTION

STRAIGHT-IN RWY28

Pass ENTRY at 5.000' MSL or below, pass INITIAL at 1.500' MSL or below.

OVERHEAD BREAK RWY28

Pass ENTRY at 5.000' MSL or below, pass INITIAL at 2.000' MSL, break to the south.

DEPARTURE GENERAL

Pass Departure end of runway at 1.000' or below.

DEP RWY28 PAPA: Fly straight ahead to exit.

DEP RWY28 LAKE: Fly straight ahead until coast, than right turn direct exit.

DEP RWY28 SIERRA: Fly straight ahead until coastline, then climbing left turn, intercept AKR R-180 to exit.

DEP ECHO: no exit.

NOT AVAILABLE

NOT AVAILABLE