

**MISSION DATA CARD**

OPORD		Callsign		Mission		Date/Time		
2399/2023		Raptor 1		Training		202000NOV23		
Task	SEAD Harm POS/EOM					Freq		
AO	SA2 Training Range					134.0		
Departure				Recovery				
RWY10 VFR				RWY28 VFR				
#	Callsign		Pilot		IFF	TCN	LSR	NET
-1	Raptor 1-1		Newbie		1611	21Y	1561	
-2	Raptor 1-2		Hercules		1612	84Y	1562	
-3	Raptor 1-3		Butcher		1613	84X	1563	
-4	Raptor 1-4		Woodman		1614	21X	1564	

**LOADOUT**

A/A	A120C, 2xA9X, A120B				GUN	100% HEI-T	
A/G	2xA88C				CHF	60	
POD	A184				FLR	60	
TKS	2xFT300				FUEL	100%	

**TOLD**

	Takeoff	Target	Joker	Bingo	Land		
FUEL	11169						

**AIRBASES**

	Name	TCN	ATIS	GND	TWR	RWY	Elev	ILS
Dep	Akrotiri AFB	107X	288.2	240.1	339.85	28	62	109.7
Arr	Akrotiri AFB	107X	288.2	240.1	339.85	28	62	109.7
Div	Paphos Internationl	79X	127.3		353.8	29	40	108.9

**FLIGHTPLAN**

#	Name	Navaid/Coords/DME	ALT	TOT
1	ECHO	N34 42 31.443 E033 10 00.221	5000	
2	PAPA	N34 39 43.973 E032 49 10.352	5000	
3	DAROS	N35 00 44.958 E033 08 46.780	20000	
4	Gecitkale AB	N35 14 12 E033 43 19	20000	
5	ALSUS	N35 02 05.989 E034 39 23.901	20000	
6	LOSOS	N34 42 35.345 E033 22 11.397	10000	
7	SIERRA	N34 24 35.912 E032 57 53.963	5000	
8	RAF Akrotiri	N34 35 26 E032 59 17	100	

## OTHER FLIGHTS

Callsign	Mission	Airframe	Freq	TCN	Grpld	Laser
Vanguard 1	Training	1x AV-8B N/A	264.55	21/84		168X
AO	AKAMAS	Task	Bombing Training			
Nazgul* 6	Training	4x F-15E	261.25	21/84		156X
AO		Task				
Edelweiss 6	Training	4x A-10C	134.65	21/84	35	156X
AO		Task	Bomb Training			
Raptor 2	Training	4x F-16C	134.25	21/84		156X
AO	SA2 Training Range	Task	SEAD Harm POS/EOM			
T-Rex 2	Training	4x A-10C	132.25	21/84	25	156X
AO	SW Cyprus	Task	Emergency Procedures			

**RADIO CHANNELS**

#	Freq	Name
1		Flight/Squadron specific
2	288.2	Akrotiri ATIS
3	240.1	Akrotiri Ground
4	339.85	Aktrotiri Tower
5	335.05	Akrotiri Approach
6	360.1	Incirlik Tower
7	371.35	Incirlik Ground
8	377.475	Incirlik ATIS
9		No Preset
10	127.3	Paphos ATIS
11	353.8	Paphos Tower
12	304.0	CVN-73 George Washington
13	302.0	LHA-1 Tarawa
14	259.0	CV-59 Forrestal
15		No Preset
16	377.8	Overlord
17	265.0	KC-135 Texaco-1 medium/slow
18	319.8	KC-135 Arco-1
19	360.8	KC-135MPRS Arco-2
20	256.0	S-3B Recovery Tanker

**RAMROD**

0	1	2	3	4	5	6	7	8	9
P	I	T	C	H	F	O	R	K	S

**KTC 1400 C**

	0	1	2	3	4	5	6	7	8	9
A	OKLN	FYB	UDH	XT	EM	QAI	PJ	VC	SW	GR
B	QDRL	JYE	BSG	HV	FK	IPO	AT	WM	UN	CX
C	FBWT	XLN	UGV	SR	DI	OEQ	YH	JK	MA	PC
D	XKBT	SAD	WOR	IY	QM	JGP	FL	UC	EV	NH
E	EKJD	PBU	RYV	FX	GA	COS	QN	WT	HI	LM
F	OJXC	YWI	QVT	PM	RS	GHL	EN	UK	DF	BA
G	JPMH	LBQ	KWD	XO	EY	AGS	NI	VU	TC	FR
H	BTDK	EWP	AVY	FS	QU	XLR	CN	OI	HJ	MG
I	QFGS	API	RXD	CN	VY	KOW	BH	TL	EM	JU
J	FXPO	UKH	GWS	YD	IQ	EBR	JM	CV	TL	NA
K	FIUO	QRE	DKC	JA	HG	VYM	PL	NS	TX	BW
L	FVIL	BRA	YKG	UE	HD	TJO	NP	WS	QM	XC
M	MHPF	KIG	TNW	VS	LE	OXJ	QD	RB	UA	YC
N	JRTC	HAP	KXE	DB	NI	OGL	MU	WF	SV	QY
O	WHRJ	BTG	PUN	SM	AL	EFC	XO	YK	DQ	IV
P	NOUQ	LPC	EKV	WT	RY	MJS	BD	GA	IX	HF
Q	PJOG	CWY	QIT	LX	SU	HKD	BN	FE	MA	RV
R	VUWK	EFH	ALR	GM	IX	SNO	DY	QC	JT	BP
S	QPDV	AGC	URX	MW	TS	JNL	IO	EB	YH	KF
T	YQMS	APH	FRG	KB	XT	NIJ	WE	UC	LO	VD
U	WCUM	PNG	VQI	SJ	XY	TRH	FK	EA	LO	BD
V	BLRW	CDM	AIY	FP	ES	NHV	KT	JQ	UX	GO
W	JLBG	IOP	YQA	RT	ND	UFS	CE	KW	MH	XV
X	OAPJ	LMR	CGN	SX	KI	BTE	WY	DH	VF	UQ
Y	PYQO	GHE	KXI	WM	CT	UJR	VD	BN	LA	FS

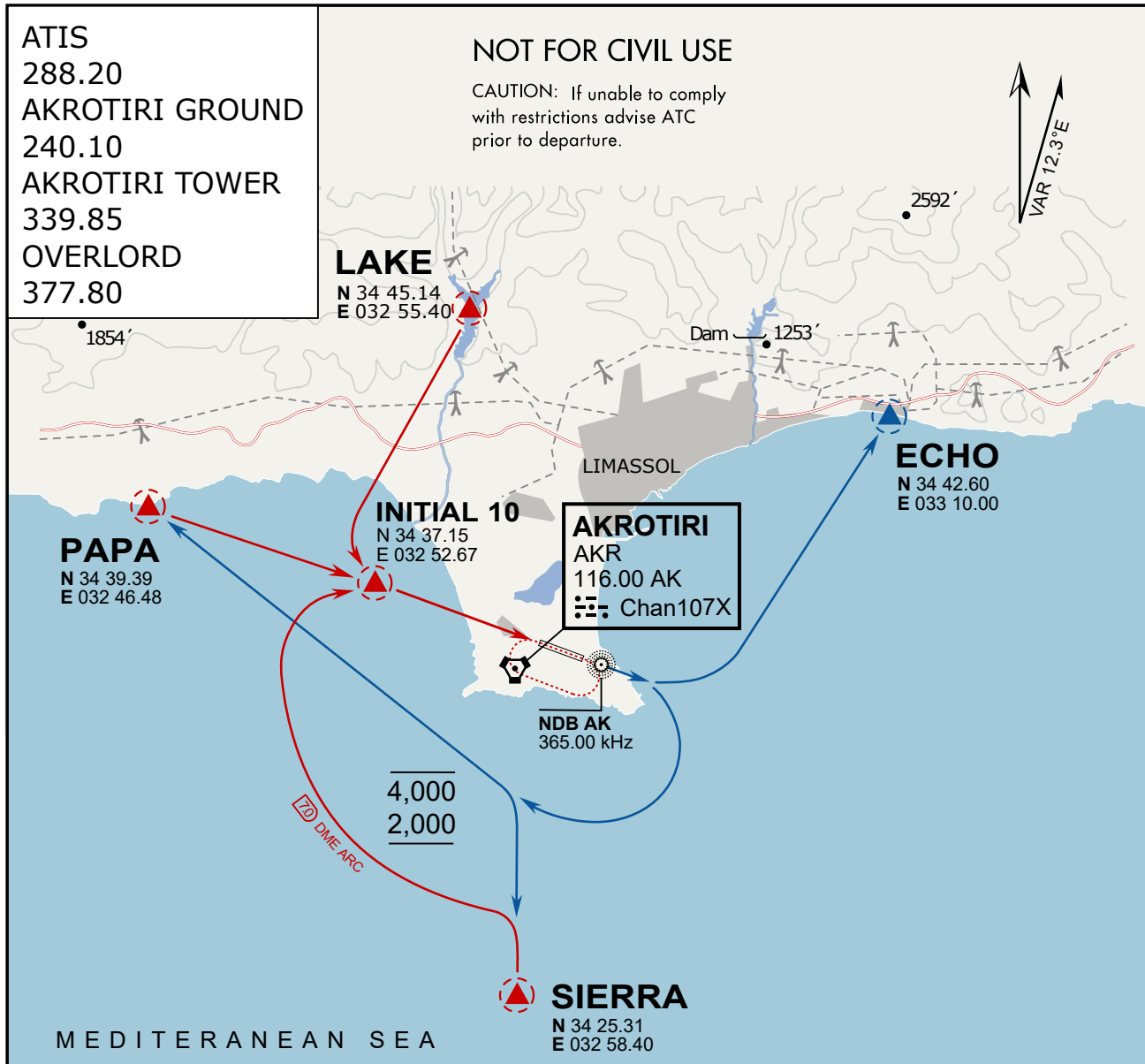
**NAVAIDS**

<b>Id</b>	<b>Name</b>	<b>Channel</b>	<b>Position</b>	<b>Elevation</b>
DAN	Incirlik	21	N37 00.950 E035 26.883	243
AKR	Akrotiri	107	N34 34.765 E032 57.769	147
PHA	Paphos	79	N34 42.997 E032 28.963	35
RMD	Ramat David	84	N32 39.892 E035 11.265	136
OS66	Kuweires Military Aviation Institute	36	N36 11.362 E037 34.226	1200

**FOR DCS  
 USE ONLY**



ATIS	AKROTIRI GND	AKROTIRI TWR	OVERLORD CONTROL	TACAN	FIELD ELEVATION
288.20 MHz	240.10   122.10	339.85   130.075	377.8	AKR 107X	<b>75 [ft] 23 [m]</b>



## ARR / DEP ROUTE DESCRIPTION

### ARRIVAL GENERAL

Pass Entry at 5.000' or below. Overhead Brake RWY 10: pass INITIAL 10 at 2.000' MSL.  
Straight-in RWY 10 : pass INITIAL 1.500' or below.

ARR RWY10 PAPA / LAKE: Direct initial.

ARR RWY10 SIERRA: Intercept ARC 7 of AKR to INITIAL 10.

ARR ECHO: no ENTRY.

### DEPARTURE GENERAL

Pass Departure end of runway at 1.000' AGL or below. Keep RWY heading until coastline.

DEP RWY10 ECHO: Direct EXIT.

DEP RWY10 SIERRA: Climbing right turn, intercept R180 AKR to Sierra.

DEP RWY10 PAPA: Climbing right turn until R180 AKR, then direct Papa

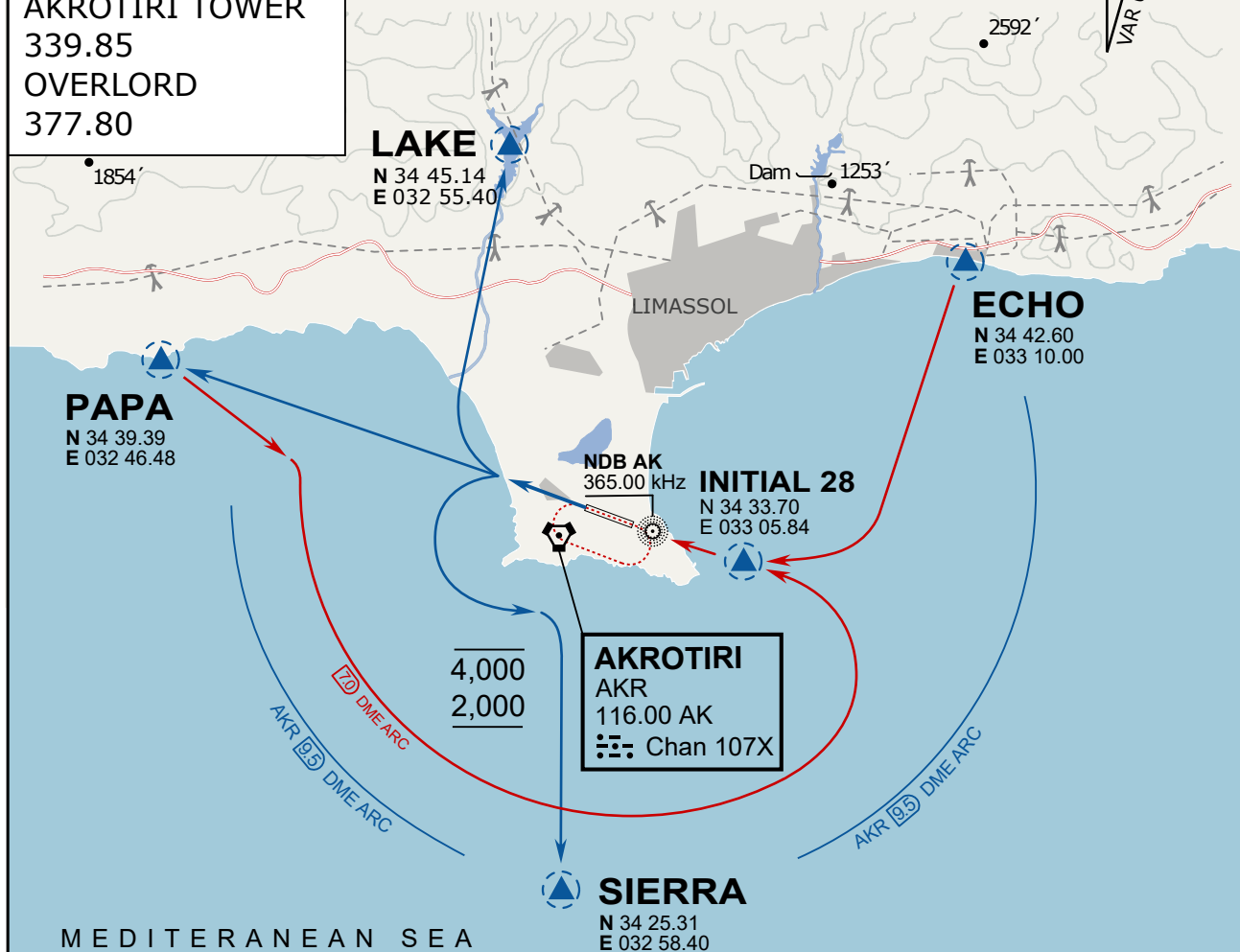
DEP LAKE: no EXIT.



ATIS  
288.20  
AKROTIRI GROUND  
240.10  
AKROTIRI TOWER  
339.85  
OVERLORD  
377.80

NOT FOR CIVIL USE

CAUTION: If unable to comply with restrictions advise ATC prior to departure.



### ARR / DEP ROUTE DESCRIPTION

#### STRAIGHT-IN RWY28

Pass ENTRY at 5.000' MSL or below, pass INITIAL at 1.500' MSL or below.

#### OVERHEAD BREAK RWY28

Pass ENTRY at 5.000' MSL or below, pass INITIAL at 2.000' MSL, break to the south.

#### DEPARTURE GENERAL

Pass Departure end of runway at 1.000' or below.

DEP RWY28 PAPA: Fly straight ahead to exit.

DEP RWY28 LAKE: Fly straight ahead until coast, than right turn direct exit.

DEP RWY28 SIERRA: Fly straight ahead until coastline, then climbing left turn, intercept AKR R-180 to exit.

DEP ECHO: no exit.

**NOT AVAILABLE**

**NOT AVAILABLE**