

MISSION DATA CARD

OPORD		Callsign		Mission		Date/Time		
2398/2023		Vanguard 1		Training		202015NOV23		
Task	Bombing Training					Freq		
AO	AKAMAS					264.55		
Departure				Recovery				
CAT				CASE I				
#	Callsign		Pilot		IFF	TCN	LSR	NET
-1	Vanguard 1-1		Herby		3311	21Y	1681	

LOADOUT

A/A		GUN	
A/G		CHF	
POD		FLR	
TKS		FUEL	

TOLD

	Takeoff	Target	Joker	Bingo	Land
FUEL	7758				

AIRBASES

	Name	TCN	ATIS	GND	TWR	RWY	Elev	ILS
Dep	LHA-1 Tarawa	85X			302.0			
Arr	LHA-1 Tarawa	85X			302.0			
Div	Akrotiri AFB	107X	288.2	240.1	339.85	28	62	109.7

FLIGHTPLAN

#	Name	Navaid/Coords/DME	ALT	TOT
1	ANANE	N34 18.048 E032 43.619	20000	
2	AAR	N34 24 E034 03	15000	
3	EMILI	N34 38.389 E034 02.586	15000	
4	OTESA	N34 55.739 E033 26.060	500	
5	BONEK	N35 04.391 E032 55.979	500	
6	AKB.ETY	N35 09.519 E032 23.619	5000	
7	AKB.T1	N35 04.371 E032 19.093	5000	
8	HOUSE OF DIONYSUS	N34 45.498 E032 24.368	1500	
9	MEZUS	N34 25.109 E032 03.519	5000	

SUPPORT**Tanker**

Callsign	TCN	Freq	ALT	TAS
ARCO 2	41Y	360.8	FL220	400
	Pos	ARCO2: (N3653 E03452)		
TEXACO 2	44Y	244.78	FL150	250
	Pos	TEXACO2: (N3424 E03403)		

AWACS

Callsign	Freq	ALT	Pos
OVERLORD2	377.8	FL320	N3713 E03643 - N3714 E03749

OTHER FLIGHTS

Callsign	Mission	Airframe	Freq	TCN	Grpld	Laser
Raptor 1	Training	4x F-16C	134.0	21/84		156X
AO	SA2 Training Range	Task	SEAD Harm POS/EOM			
Nazgul* 6	Training	4x F-15E	261.25	21/84		156X
AO		Task				
Edelweiss 6	Training	4x A-10C	134.65	21/84	35	156X
AO		Task	Bomb Training			
Raptor 2	Training	4x F-16C	134.25	21/84		156X
AO	SA2 Training Range	Task	SEAD Harm POS/EOM			
T-Rex 2	Training	4x A-10C	132.25	21/84	25	156X
AO	SW Cyprus	Task	Emergency Procedures			

RADIO CHANNELS

#	Freq	Name
1		Flight/Squadron specific
2	288.2	Akrotiri ATIS
3	240.1	Akrotiri Ground
4	339.85	Aktrotiri Tower
5	335.05	Akrotiri Approach
6	360.1	Incirlik Tower
7	371.35	Incirlik Ground
8	377.475	Incirlik ATIS
9		No Preset
10	127.3	Paphos ATIS
11	353.8	Paphos Tower
12	304.0	CVN-73 George Washington
13	302.0	LHA-1 Tarawa
14	259.0	CV-59 Forrestal
15		No Preset
16	377.8	Overlord
17	265.0	KC-135 Texaco-1 medium/slow
18	319.8	KC-135 Arco-1
19	360.8	KC-135MPRS Arco-2
20	256.0	S-3B Recovery Tanker

RAMROD

0	1	2	3	4	5	6	7	8	9
P	I	T	C	H	F	O	R	K	S

KTC 1400 C

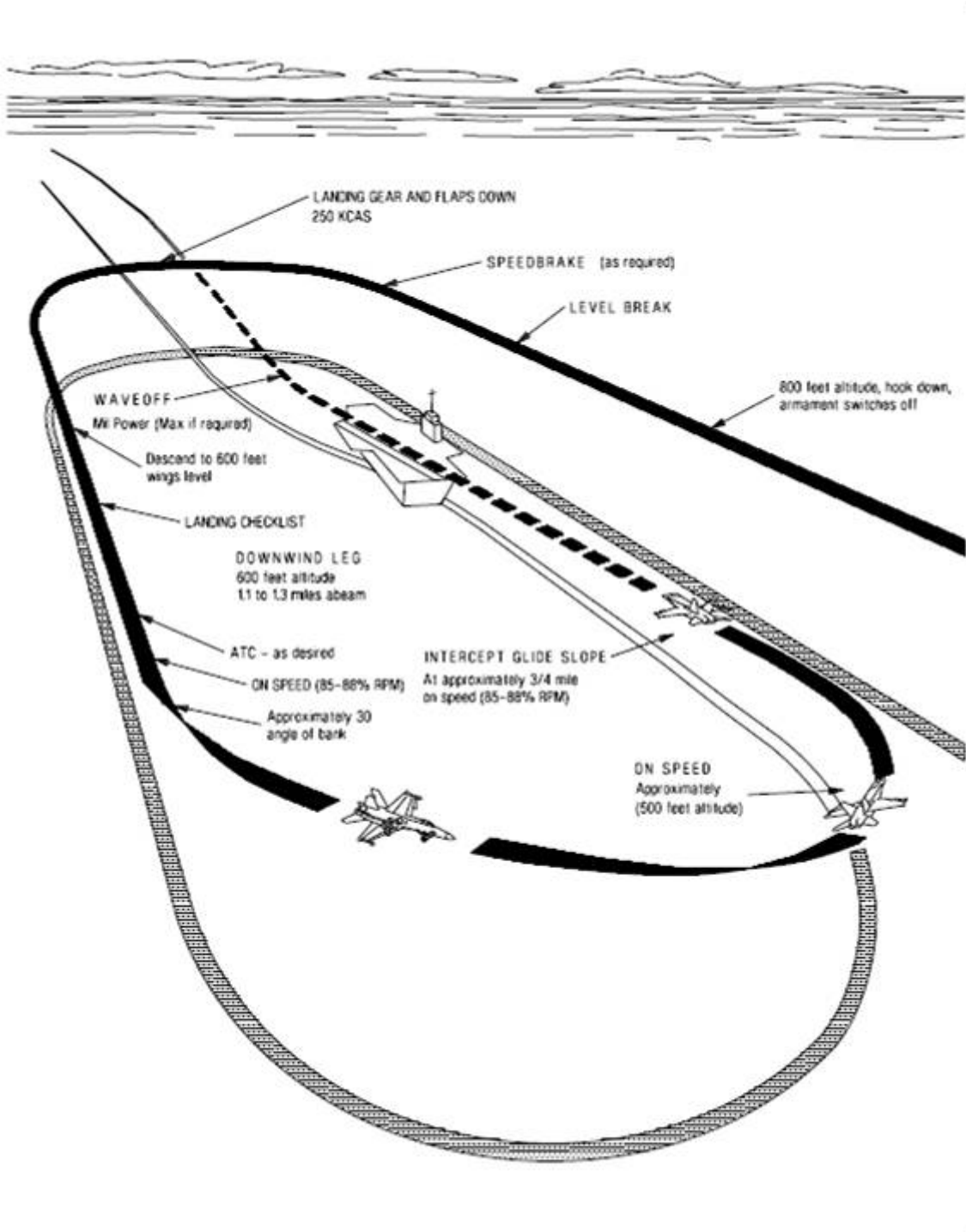
	0	1	2	3	4	5	6	7	8	9
A	OKLN	FYB	UDH	XT	EM	QAI	PJ	VC	SW	GR
B	QDRL	JYE	BSG	HV	FK	IPO	AT	WM	UN	CX
C	FBWT	XLN	UGV	SR	DI	OEQ	YH	JK	MA	PC
D	XKBT	SAD	WOR	IY	QM	JGP	FL	UC	EV	NH
E	EKJD	PBU	RYV	FX	GA	COS	QN	WT	HI	LM
F	OJXC	YWI	QVT	PM	RS	GHL	EN	UK	DF	BA
G	JPMH	LBQ	KWD	XO	EY	AGS	NI	VU	TC	FR
H	BTDK	EWP	AVY	FS	QU	XLR	CN	OI	HJ	MG
I	QFGS	API	RXD	CN	VY	KOW	BH	TL	EM	JU
J	FXPO	UKH	GWS	YD	IQ	EBR	JM	CV	TL	NA
K	FIUO	QRE	DKC	JA	HG	VYM	PL	NS	TX	BW
L	FVIL	BRA	YKG	UE	HD	TJO	NP	WS	QM	XC
M	MHPF	KIG	TNW	VS	LE	OXJ	QD	RB	UA	YC
N	JRTC	HAP	KXE	DB	NI	OGL	MU	WF	SV	QY
O	WHRJ	BTG	PUN	SM	AL	EFC	XO	YK	DQ	IV
P	NOUQ	LPC	EKV	WT	RY	MJS	BD	GA	IX	HF
Q	PJOG	CWY	QIT	LX	SU	HKD	BN	FE	MA	RV
R	VUWK	EFH	ALR	GM	IX	SNO	DY	QC	JT	BP
S	QPDV	AGC	URX	MW	TS	JNL	IO	EB	YH	KF
T	YQMS	APH	FRG	KB	XT	NIJ	WE	UC	LO	VD
U	WCUM	PNG	VQI	SJ	XY	TRH	FK	EA	LO	BD
V	BLRW	CDM	AIY	FP	ES	NHV	KT	JQ	UX	GO
W	JLBG	IOP	YQA	RT	ND	UFS	CE	KW	MH	XV
X	OAPJ	LMR	CGN	SX	KI	BTE	WY	DH	VF	UQ
Y	PYQO	GHE	KXI	WM	CT	UJR	VD	BN	LA	FS

NAVAIDS

Id	Name	Channel	Position	Elevation
DAN	Incirlik	21	N37 00.950 E035 26.883	243
AKR	Akrotiri	107	N34 34.765 E032 57.769	147
PHA	Paphos	79	N34 42.997 E032 28.963	35
RMD	Ramat David	84	N32 39.892 E035 11.265	136
OS66	Kuweires Military Aviation Institute	36	N36 11.362 E037 34.226	1200



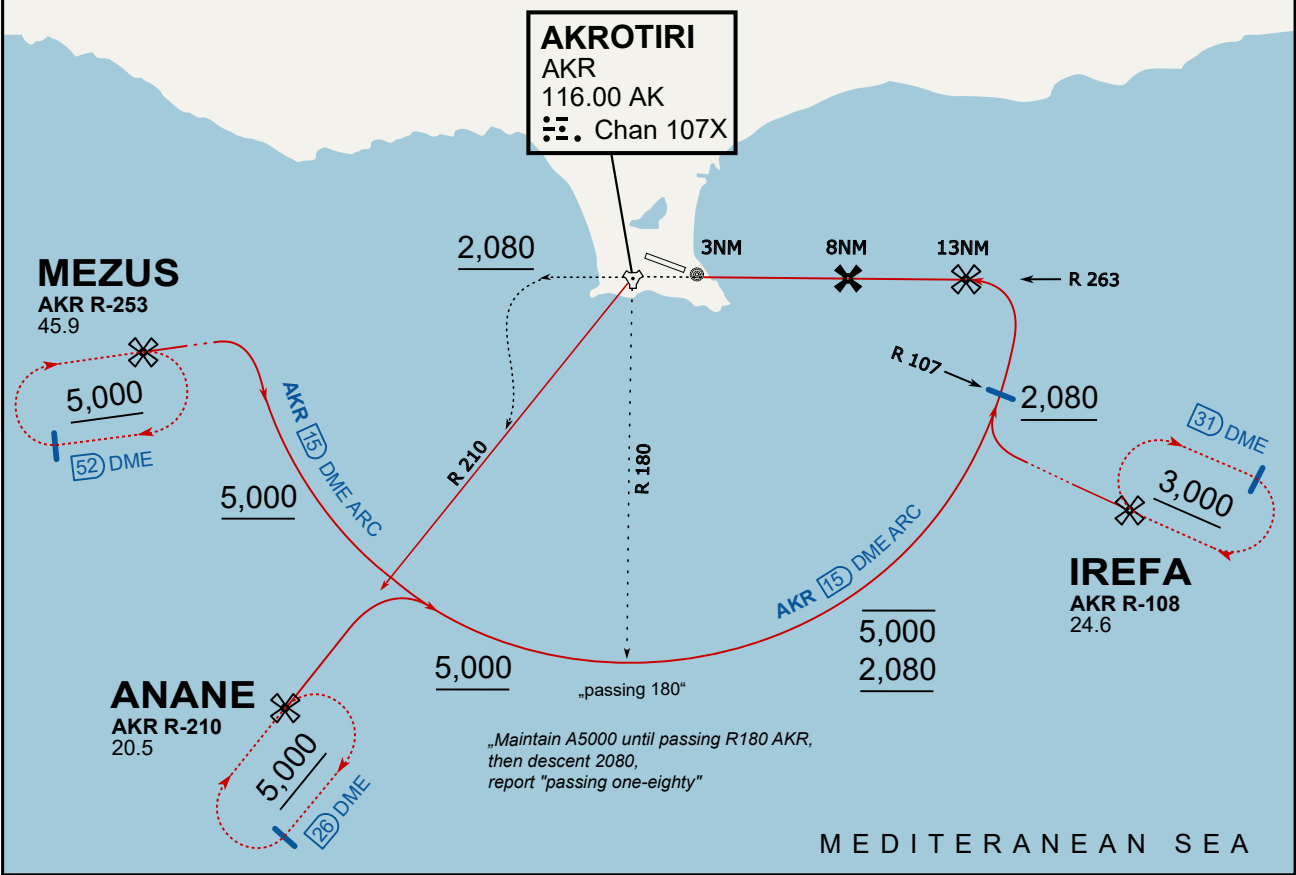




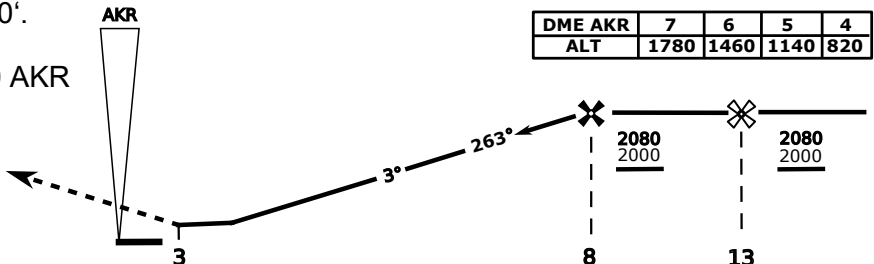
ATIS
288.200
AKROTIRI GROUND
122.100
AKROTIRI TOWER
339.850
APP (OVERLORD)
377.800

NOT FOR CIVIL USE

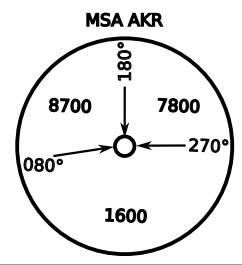
CAUTION: If unable to comply with restrictions advise ATC prior to departure.



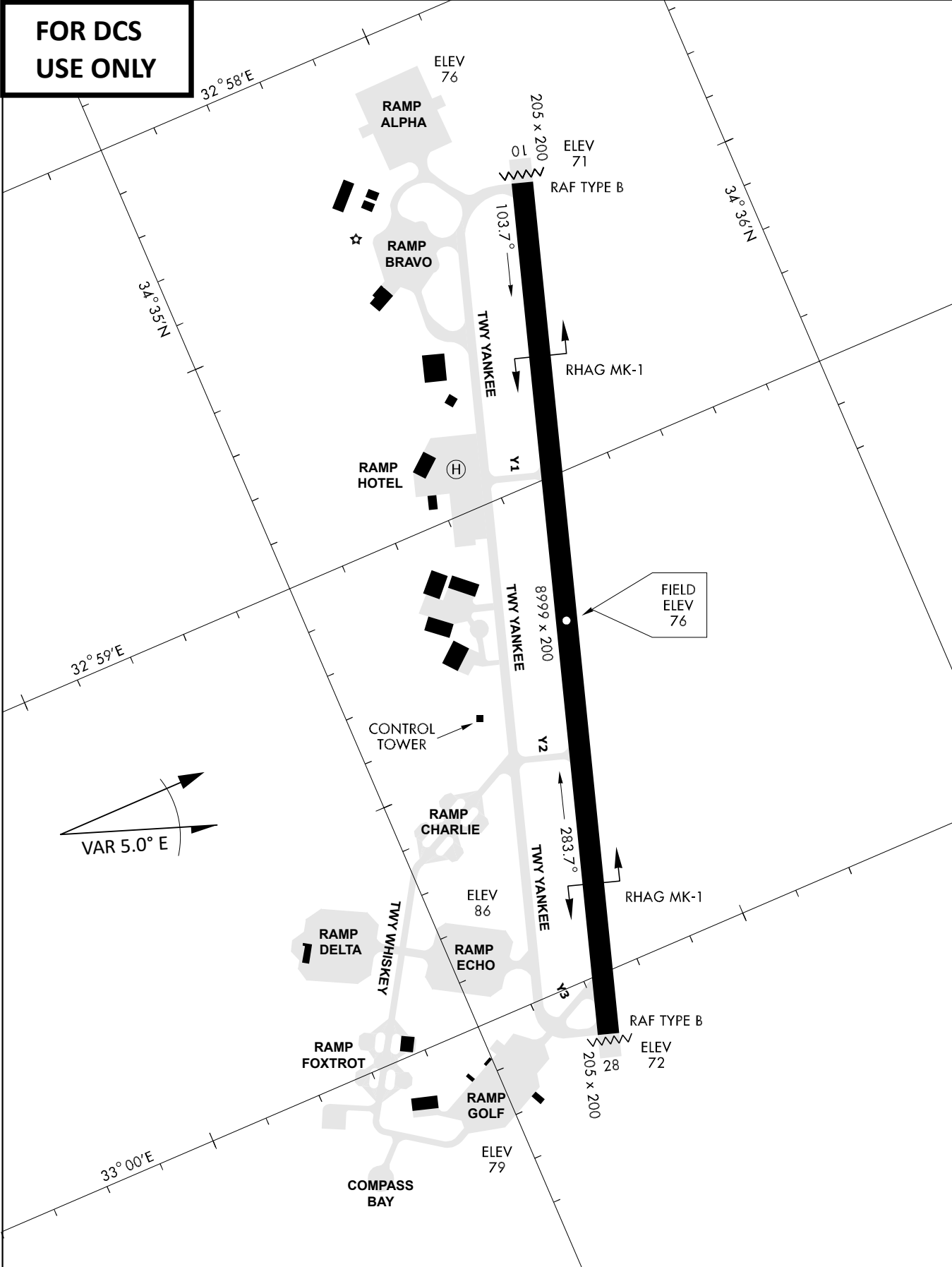
On Track 263° climb A 4.000'.
passing 2.080' (2.000' AAL)
turn left and intercept R-210 AKR
to ANANE.
Enter ANANE Holding.



CAT	TAC	CIRCLE	GS (kts)	80	120	150	180	210
A	500(430)	680 (610) 2000m	FAF - MAPt (4.1NM)	3:06	2:03	1:38	1:22	1:10
B	1300m		RoD (fpm)	420	640	800	950	1110
C	780 (710) 2600m	N/A	780 (710) 3300m	- CIRCLING PROHIBITED N of Rwy - final track is offset 20° right of RCL and Intcp 1.1NM before THR - when established on final contact tower - Timing not Auth to define MAPt				
D			780 (710) 3600m					
E			1380 (1310) 5000m					
		1380 (1310) 5000m						



**FOR DCS
 USE ONLY**



ATIS	AKROTIRI GND	AKROTIRI TWR	OVERLORD CONTROL	TACAN	FIELD ELEVATION
288.20 MHz	240.10 122.10	339.85 130.075	377.8	AKR 107X	75 [ft] 23 [m]