

MISSION DATA CARD

OPORD		Callsign		Mission		Date/Time	
2123/2023		T-Rex 1		CAS		212000SEP23	
Task	RED FLAG					Freq	
AO						132.25	
Departure				Recovery			
A10 TAC WEST				STRYK			
#	Callsign	Pilot	IFF	TCN	LSR	NET	
-1	T-Rex 1-1	G-Rex	1641	33Y	1721	30/01	
-2	T-Rex 1-2	Thunder	1642	96Y	1722	30/02	
-3	T-Rex 1-3	addiks	1643	96X	1723	30/03	

LOADOUT

A/A	A9M	GUN	100% CM
A/G	3x7M282L, 4xA65D, C97	CHF	120
POD	A184, TGP	FLR	360
TKS		FUEL	100%

TOLD

	Takeoff	Target	Joker	Bingo	Land
FUEL	11087				

AIRBASES

	Name	TCN	ATIS	GND	TWR	RWY	Elev	ILS
Dep	Nellis AFB	12X	270.1	275.8	327.0	21L	1850	109.1
Arr	Nellis AFB	12X	270.1	275.8	327.0	21L	1850	109.1
Div	Creech AFB	87X	290.45	275.8	360.6			

FLIGHTPLAN

#	Name	Navaid/Coords/DME	ALT	TOT
1	WFLEX	N36 18 37.200 W115 02 21.600		
2	WP2	N36 21 05.686 W115 11 51.028		
3	WP3	N36 33 37.585 W115 40 05.262		
4	WP4	N36 35 32.961 W115 57 16.181		
5	WP5	N36 47 53.428 W116 21 52.638		
6	WP6	N36 56 12.786 W116 22 25.894		
7	HOLD T	N37 05 41 W116 18 55		
8	TGT VIL	N37 42 33.682 W116 26 50.781		
9	TGT2	N37 41 36.856 W116 22 07.373		
10	EXIT	N37 08 12.716 W116 23 02.628		
11	WP Creech	N36 35 03 W115 41 12	10000	
12	WSTRYK	LSV 282/26 (N36 25 37.200 W115 30 42)	9500	
13	WGASS PEAK	LSV 309/12 (N36 24 08.400 W115 10 39.600)	8500	
14	WNellis	N36 14 40.800 W115 01 30		

COMMS

Radio	Usage
1	132.25
2	11-3-4-16-11-4-3
3	35.35

OTHER FLIGHTS

Callsign	Mission	Airframe	Freq	TCN	Grpld	Laser
T-Rex 2	CAS	4x A-10C	132.35	34/97	31	173X
AO		Task	RED FLAG			
Raptor 1	CAP	4x F-16C	134.0	31/94	27	169X
AO		Task	RED FLAG			
Tiger 5	DEAD	4x F/A-18C	261.15	35/98	32	174X
AO		Task	RED FLAG			
Tiger 1	Escort	4x F/A-18C	262.25	36/99	33	175X
AO		Task	RED FLAG			
Panther 3	DEAD	4x F/A-18C	263.15	29/92	25	167X
AO		Task	RED FLAG			
Panther 7	DEAD	4x F/A-18C	264.15	30/93	26	168X
AO		Task	RED FLAG			
Mig 1	CAP	4x F-15E	166.6	28/91	26	166X
AO		Task	RED FLAG (REDFORCE)			
Hammer* 1	Recce	1x F/A-18C	261.15	27/90	25	165X
AO		Task	RED FLAG (OECM/JAMMER)			
Vanguard 1	Strike	1x AV-8B N/A	264.55	36/99	39	173X
AO		Task	RED FLAG			
Monster 1	CAS	4x A-10C	132.15	25/88	21	161X
AO		Task	RED FLAG			
Raptor 2	CAP	4x F-16C	134.5	31/94	27	169X
AO		Task	RED FLAG			

RADIO CHANNELS

#	Freq	Name
1		Flight/Squadron specific
2	289.4	Nellis Clearance Delivery
3	275.8	Nellis Ground
4	327.0	Nellis Tower
5	385.4	Nellis Approach/Departure West
6	273.55	Nellis Approach/Departure East
7	317.525	Nellis Control -- Sally
8	254.4	Nellis Control-- Lee
9	305.6	SOF Bullseye
10	343.725	EMERGENCY SINGLE FRQ
11	270.1	Nellis ATIS
12	360.625	Creech AFB Tower
13	250.1	HAVE QUICK 13
14	251.1	HAVE QUICK 14
15	252.1	HAVE QUICK 15
16	377.8	Blackjack
17	265.0	KC-135 AR-641A
18	360.8	KC-135MPRS AR-635
19	319.8	KC-135MPRS AR-625
20	300.05	KC-135 AR-231V

RAMROD

0	1	2	3	4	5	6	7	8	9
C	H	I	V	A	L	R	O	U	S

KTC 1400 C

	0	1	2	3	4	5	6	7	8	9
A	PEJH	OQT	NFG	CU	XR	LID	AB	KV	MW	YS
B	DMXS	FQL	URB	EA	HV	NPW	KT	YJ	CG	OI
C	NRDV	SXG	BOW	YU	IC	LKQ	JA	ME	FP	TH
D	VLHI	JRC	NFP	QS	EO	YTX	GB	WK	MD	UA
E	CAKJ	VEX	PFM	QH	SU	LRB	GI	TD	NY	OW
F	ROGD	JHL	PCB	WY	FX	NVT	KI	QA	EU	SM
G	BRPM	QOJ	LXK	SF	YG	INW	UC	HD	VT	AE
H	NDSO	CMJ	XGW	QV	RL	HUA	FI	YT	BP	KE
I	QCGB	WAM	XLN	UR	PJ	IYE	OD	KH	FT	SV
J	IXEH	MTJ	BFQ	YO	UK	NRP	GW	SA	LV	CD
K	DOMW	EHK	NGB	UJ	IR	XFY	LA	QC	PS	TV
L	ERNT	LKO	IDG	BC	JX	ASM	UQ	HW	FP	YV
M	YHFT	JKC	OQM	RS	IV	LUN	BP	WG	XA	DE
N	GKEW	RAQ	SMT	DU	XI	JCV	BP	YO	FN	LH
O	CDAK	GMJ	TEI	HV	PN	OYU	LW	BF	XS	RQ
P	CNQK	YAR	UXW	OG	VD	PHL	FT	ES	IB	MJ
Q	TKCP	VXY	MOF	NI	EJ	LQW	UH	DS	GB	RA
R	APLH	MIV	FNW	QR	SK	BDJ	YE	XT	CU	GO
S	GXPH	LCA	IFS	VD	OB	NEK	QJ	WT	RY	MU
T	OJXF	ISY	BAR	GV	EH	WCL	MN	PQ	UT	KD
U	EGLC	BWA	IPF	JX	OY	VNH	SU	TK	RD	QM
V	DURQ	YIJ	EXK	WT	NF	OBS	AV	ML	PC	HG
W	LFAG	EHU	ORS	TD	PX	JWK	MQ	YN	IC	BV
X	DLWJ	MYB	EAG	KT	QN	VOH	PU	XR	SF	CI
Y	OPGU	EFC	WTA	VD	SH	KRI	QN	XM	LY	JB

NAVAIDS

Id	Name	Channel	Position	Elevation
BCE	Bryce Canyon	75	N3741.35 W11218.23	9040
BIH	Bishop	33	N3722.62 W11821.99	4114
BLD	Boulder	114	N3559.75 W11451.82	3650
BTY	Beatty	94	N3648.54 W11644.86	2925
CDC	Cedar City	120	N3747.24 W11304.90	5463
DAG	Daggett	79	N3457.75 W11634.69	1760
EED	Needles	99	N3445.96 W11428.43	650
GFS	Goffs	91	N3507.87 W11510.59	4019
GRL	Groom Lake	18	N3713.91 W11548.16	4475
HEC	Hector	74	N3447.83 W11627.78	1854
ILC	Wilson Creek	110	N3815.02 W11423.65	9318
INS	Creech AFB	87	N3635.20 W11540.12	3101
LAS	McCarran Intl	116	N3604.78 W11509.59	2142
LSV	Nellis	12	N3614.68 W11501.50	1864
MLF	Milford	58	N3821.62 W11300.79	4977
MMM	Mormon Mesa	90	N3646.16 W11416.65	2120
MVA	Mina	98	N3833.92 W11801.97	7860
OAL	Coale Dale	124	N3800.20 W11746.23	4800
PGS	Peach Springs	57	N3537.48 W11332.67	4754
TPH	Tonopah Muni	119	N3801.84 W11702.01	5330
TQQ	Silverbow	77	N3748.00 W11647.00	5500
UTI	St George	23	N3705.29 W11335.53	2871



RWY 3L-21R
 PCN 46 R/C/W/T
 RWY 3R-21L
 PCN 51 R/C/W/T
 2017

PAR	RWY	CAT	MINIMA		ARP	ELEV	Scale 1:35'500 0 300 600 900 1200 1500 [m] 0 1000 2000 3000 4000 5000 [ft]
	21L	A B D E	2057 - 0.8 200 (200-0.8/1.6)	GS 3°	36° 14.060° N	1857 [ft]	
	3R	A B D E	2057 - 0.8 200 (200-0.8/1.6)	GS 3°	115° 01.058° W	566 [m]	
SRA	21R	A C D E	2257 - 1.2 350 (350-1.2/1.6)				
	3L	A C D E	2257 - 1.2 350 (350-1.2/1.6)				

RWY	TORA	TODA	ASDA	LDA	PSN	THR	ALS
21L	10051 [ft] 3063 [m]	11051 [ft] 3368 [m]	11051 [ft] 3368 [m]	10051 [ft] 3063 [m]	36°14.043' N	115°01.018' W	⊕
3R	10120 [ft] 3084 [m]	11120 [ft] 3398 [m]	11120 [ft] 3398 [m]	10120 [ft] 3084 [m]	36°13.029' N	115°02.038' W	

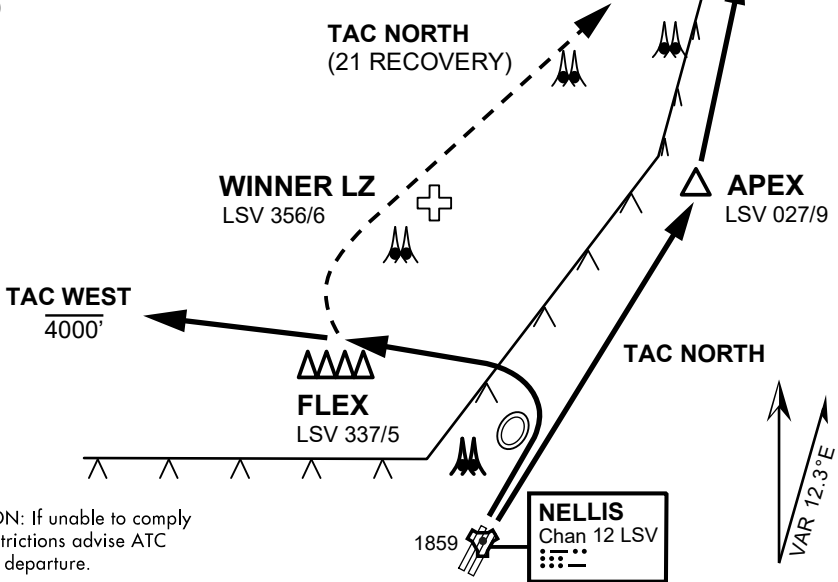
ATIS	NELLIS GROUND	NELLIS TOWER	NELLIS CONTROL	TACAN	ILS RWY 21L	NELLIS EAST	NELLIS WEST
270.100 MHz	275.800 121.800	327.000 132.55	317.525	LSV 12X	109.10 Mhz	384.400	385.000

ATIS
270.100
NELLIS GROUND
275.800
NELLIS TOWER
327.000
NELLIS CONTROL
317.525
NELLIS DEP/APP EAST
384.400
BLACKJACK
377.800

VMC ONLY

PILOT RESPONSIBLE FOR
TERRAIN AVOIDANCE

DRY LAKE
LSV 017/15



CAUTION: If unable to comply with restrictions advise ATC prior to departure.

NELLIS
Chan 12 LSV

VAR 12.3°E



DEPARTURE ROUTE DESCRIPTION

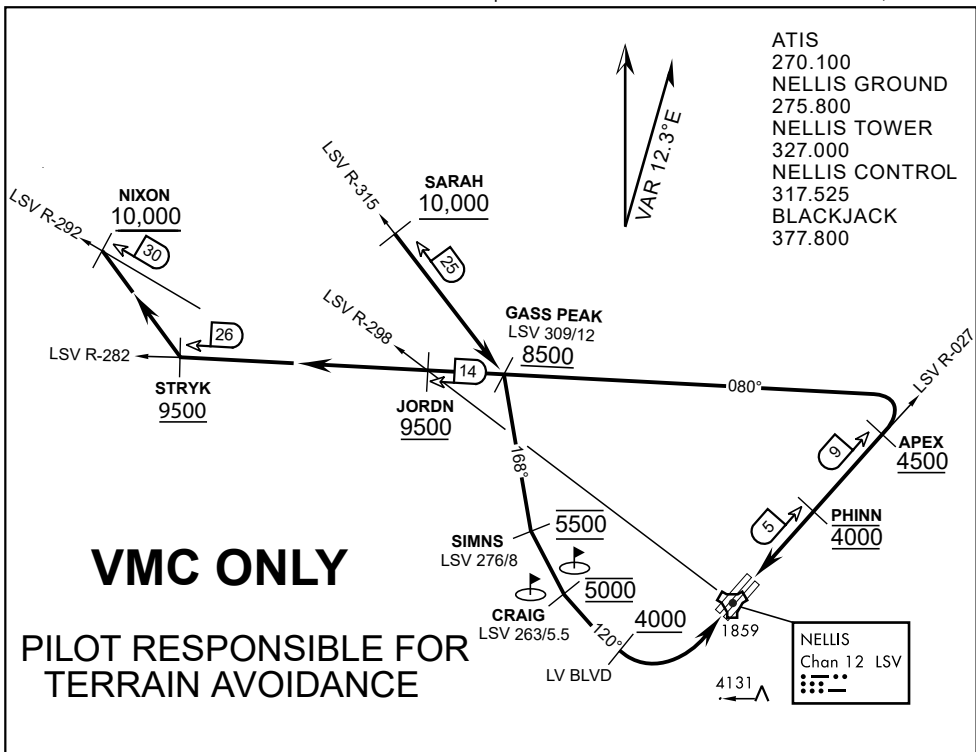
- Tac North / Tac West departures only flown during daylight from RWY 03
- Use caution for helicopters operating 3 Nm NE of FLEX (Winner LZ).
- Flights will remain at 500' AGL until deconflicted with helicopter traffic.
- Upon reaching FLEX or Dry Lake maintain VFR, remain clear of Class B airspace, and switch frequency to coordinate for range entry.

TAC NORTH

- Proceed direct APEX then direct Dry Lake. Report "APEX" informing ATC flight will clear Class B in 3Nm enroute to Dry Lake.
- For opposite direction takeoffs when RWY 21 is the active, proceed to FLEX then to Dry Lake.
- Report "FLEX" to inform ATC flight is clear of Class B airspace. Use caution for helicopter training.

TAC WEST:

- Proceed to FLEX. Report "FLEX" to inform ATC flight is clear of Class B airspace. Remain below 4000' MSL until north of Gass Peak.



APPROACH ROUTE DESCRIPTION

APPROACH RWY 3L/R

Cross STRYK at or above 9,500' MSL, proceed direct GASS PEAK. Cross JORDN at or above 9,500' MSL, cross GASS PEAK at or above 8,500' MSL. Proceed direct SIMNS and cross at 5,500' MSL. Cross Las Vegas Blvd at or above 4,000' MSL then to 3,500' MSL for Initial. Remain within 4 DME if LSV on turn to final.

VFR STRAIGHT-IN RWY 3L/R

Depart CRAIG & descend to be at 3,000' MSL by Las Vegas Blvd. Do not descend below 3,000' MSL until within 5 DME of LSV or 4 NM of the runway on turn to final.

APPROACH RWY 21L/R

Cross STRYK at or above 9,500' MSL, proceed direct GASS PEAK. Cross JORDN at or above 9,500' MSL, cross GASS PEAK at or above 8,500' MSL. Cross APEX at or above 4,500' MSL then direct 5NM initial. Descend to cross PHINN at 4,000' MSL, Inside 5 NM descend to 3,500' MSL.

VFR STRAIGHT-IN RWY 21L/R

Cross APEX at 4,000' MSL. Descend to be at 3,000' MSL at PHINN. Descend to 3,000' MSL at LSV 027/5.

RANGE 63B EXIT

SOUTH: Via NIXON at or above 10,000' MSL, then direct STRYK.
EAST: Via SARAH at or above 10,000' MSL, then direct GASS PEAK.



INDIAN SPRINGS, NEVADA

TACAN INS Chan 87	APCH CRS 065°	Rwy ldg TDZE 3133	9002 3113
		Arpt Elev 3113	

INDIAN SPRINGS AF AUX (KINS)

▼ * MISSED APPROACH: Straight ahead to INS TACAN, intercept INS R-outbound, cross 17 DME at or above 9500, then direkt KSV TACAN 114

NELLIS CON

CREECH AFB TOWER
118.30 60.60

GND CON

NOT FOR CIVIL USE

FOR USE UNDER BASIC VFR
WEATHER MINIMUMS ONLY

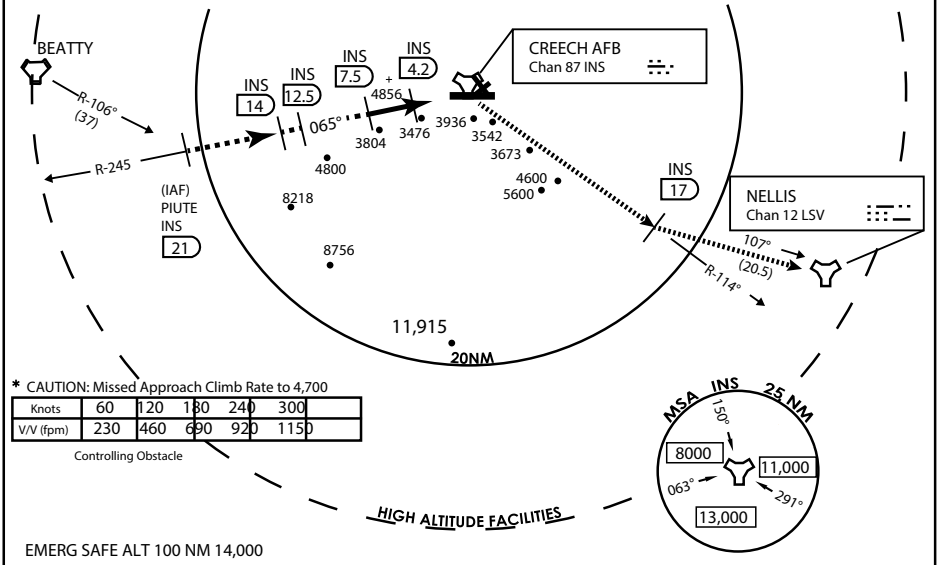
PILOT IS RESPONSIBLE FOR TERRAIN/OBSTACLE AVOIDANCE AND APPROPRIATE VFR CLOUD CLEARANCE FOR ALL

CAUTION: Descent gradients are greater than allowed under standard TERPS criteria and inbound course does not meet straight-in criteria

CAUTION: Final approach course crosses Runway centerline at MIDFIELD. Maneuvering left of course required prior to landing. Do not Maneuver farther north than the INS R- 258

Modified by viaBog 66 for use with DCS
NOT FOR REAL LIFE NAVIGATION

Modified by viaBog 66 for use with DCS
NOT FOR REAL LIFE NAVIGATION



* CAUTION: Missed Approach Climb Rate to 4,700

Knots	60	120	180	240	300
V/V (fpm)	230	460	690	920	1150

Controlling Obstacle

CATEGORY	A	B	C	D	E	
S-8	3760-1	1/2 627 (700-1 1/2)	3760-1 3/4 627 (700-1 3/4)	3760-2 627 (700-2)	3760-2 1/4 627 (700-2 1/4)	
CIRCLING	NOT AUTHORIZED					MIRL Rwy 8-26

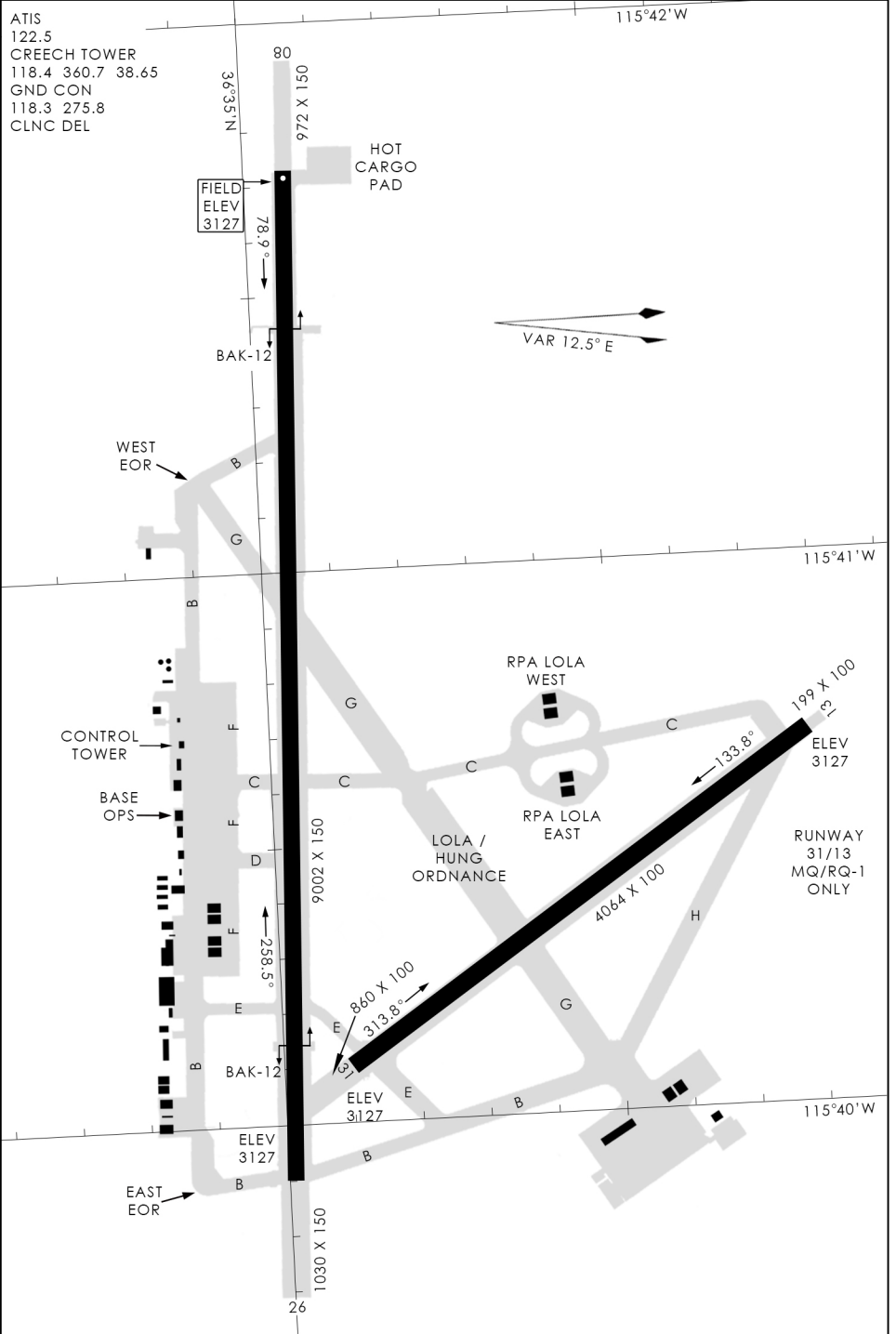
CITY OF INDIAN, NEVADA

INDIAN SPRINGS AF AUX (KINS)

(FOR DAY VFR USE ONLY)



AIRPORT DIAGRAM



476 VFG JAN 2019

476 VFG JAN 2019

AIRPORT DIAGRAM