

**MISSION DATA CARD**

OPORD		Callsign		Mission		Date/Time		
1854/2023		Rattler 2		Training		202000APR23		
Task	Formations					Freq		
AO	LATNC					133.5		
Departure				Recovery				
HELICOPTER DEP				HELICOPTER ARR				
#	Callsign		Pilot		IFF	TCN	LSR	NET
-1	Rattler 2-1		Hazel		4621	21Y	1251	
-2	Rattler 2-2		Laud		4622	84Y	1252	
-3	Rattler 2-3		Warblade		4623	84X	1253	
-4	Rattler 2-4		Jemi		4624	21X	1254	

**LOADOUT**

A/A						GUN	100% HEDP
A/G						CHF	30
POD						FLR	60
TKS						FUEL	75%

**TOLD**

	Takeoff	Target	Joker	Bingo	Land
FUEL	1884				

**AIRBASES**

	Name	TCN	ATIS	GND	TWR	RWY	Elev	ILS
Dep	Nellis AFB	12X	270.1	275.8	327.0	21L	1850	109.1
Arr	Nellis AFB	12X	270.1	275.8	327.0	21L	1850	109.1

**FLIGHTPLAN**

#	Name	Navaid/Coords/DME	ALT	TOT
1	SOUTH GAP	LSV 160/2.9 (N36 11.940 W115 00.400)		

**COMMS**

Radio	Usage
1	133.50
2	327.0
3	35.35

## OTHER FLIGHTS

Callsign	Mission	Airframe	Freq	TCN	Grpld	Laser
Raptor 1	Training	4x F-16C	134.0	21/84		156X
AO	Range 61	Task	Bomb Training - Pop Up			
Vanguard 1	Training	1x AV-8B N/A	264.55	21/84		168X
AO	Range 64A	Task	Bombing Training			
T-Rex 2	Training	4x A-10C	132.25	27/90	25	165X
AO	Creech AFB	Task	Emergency Procedures			
Panther 3	Training	4x F/A-18C	261.35	31/94		157X
AO	Range 75-43	Task	Training AGM65F			
Cougar 1	Training	4x F-14B	261.25	21/84		156X
AO		Task				
Monster 2	Training	4x A-10C	132.15	27/90	21	164X
AO	R62	Task				

**RADIO CHANNELS**

#	Freq	Name
1		Flight/Squadron specific
2	289.4	Nellis Clearance Delivery
3	275.8	Nellis Ground
4	327.0	Nellis Tower
5	385.4	Nellis Approach/Departure West
6	273.55	Nellis Approach/Departure East
7	317.525	Nellis Control -- Sally
8	254.4	Nellis Control-- Lee
9	305.6	SOF Bullseye
10	343.725	EMERGENCY SINGLE FRQ
11	270.1	Nellis ATIS
12	360.625	Creech AFB Tower
13	250.1	HAVE QUICK 13
14	251.1	HAVE QUICK 14
15	252.1	HAVE QUICK 15
16	377.8	Blackjack
17	265.0	KC-135 AR-641A
18	360.8	KC-135MPRS AR-635
19	319.8	KC-135MPRS AR-625
20	300.05	KC-135 AR-231V

**RAMROD**

0	1	2	3	4	5	6	7	8	9
T	H	U	M	B	S	C	R	E	W

**KTC 1400 C**

	0	1	2	3	4	5	6	7	8	9
A	FHVO	NBG	ECY	DU	IL	WXR	KJ	TS	QA	PM
B	DTOR	VSN	KUW	MB	GA	LIF	EC	HQ	PJ	YX
C	AFKP	QID	GCU	TO	LJ	BYS	XN	VH	WM	ER
D	OWJB	IFG	DTA	PQ	EK	SYV	NU	CH	MR	XL
E	GAFS	VHW	CKE	XJ	DO	IYT	MR	NB	PQ	UL
F	GUIB	MVK	WFH	LT	SX	RYC	QO	JE	AP	DN
G	HAWU	QDK	BCV	EF	RL	SMO	IY	JN	PX	TG
H	VEHP	YFD	RTU	LB	JA	OGQ	CI	XS	NM	WK
I	FPUA	KTW	QNE	YH	BV	CMD	LO	RG	XJ	SI
J	KWAX	VCI	SRU	GH	YM	LDF	QN	TJ	OE	PB
K	NHXI	VPO	DYE	SJ	WK	FGL	QU	BC	AM	RT
L	HBWV	TLR	GYO	JU	AE	SPD	QX	CN	IK	MF
M	IRTL	VCN	BUP	EA	DM	QYO	FS	JG	HW	KX
N	RFSE	AJT	VQP	KH	OW	UBN	IX	GL	DY	CM
O	PTWO	AUV	SBC	DE	RY	KQG	IJ	FH	XL	NM
P	IWUO	PMD	TJC	NY	AL	HEF	XV	RS	QB	GK
Q	GHPA	VEO	FNT	IM	WK	UYB	SL	CQ	DX	RJ
R	GFIX	QCA	SDU	KM	YT	RNL	BP	VE	WO	JH
S	YUGH	KRQ	OBS	JC	PW	TNF	IL	XM	VE	AD
T	IAUX	QKC	YTD	SG	HR	OEM	LW	PJ	VB	NF
U	HNTD	PJC	XUY	BV	MO	GIL	QK	FA	RE	WS
V	KUJP	QCT	HIY	MW	BG	ELN	AX	DO	RV	SF
W	YFBD	HCR	OQS	MV	IU	NEA	XJ	LK	PT	WG
X	UCPY	IEA	DTV	OB	RH	JLX	WN	QS	KM	FG
Y	PBXO	WTS	DAU	LF	GI	RVQ	JE	HY	KM	CN

**NAVAIDS**

<b>Id</b>	<b>Name</b>	<b>Channel</b>	<b>Position</b>	<b>Elevation</b>
BCE	Bryce Canyon	75	N3741.35 W11218.23	9040
BIH	Bishop	33	N3722.62 W11821.99	4114
BLD	Boulder	114	N3559.75 W11451.82	3650
BTY	Beatty	94	N3648.54 W11644.86	2925
CDC	Cedar City	120	N3747.24 W11304.90	5463
DAG	Daggett	79	N3457.75 W11634.69	1760
EED	Needles	99	N3445.96 W11428.43	650
GFS	Goffs	91	N3507.87 W11510.59	4019
GRL	Groom Lake	18	N3713.91 W11548.16	4475
HEC	Hector	74	N3447.83 W11627.78	1854
ILC	Wilson Creek	110	N3815.02 W11423.65	9318
INS	Creech AFB	87	N3635.20 W11540.12	3101
LAS	McCarran Intl	116	N3604.78 W11509.59	2142
LSV	Nellis	12	N3614.68 W11501.50	1864
MLF	Milford	58	N3821.62 W11300.79	4977
MMM	Mormon Mesa	90	N3646.16 W11416.65	2120
MVA	Mina	98	N3833.92 W11801.97	7860
OAL	Coale Dale	124	N3800.20 W11746.23	4800
PGS	Peach Springs	57	N3537.48 W11332.67	4754
TPH	Tonopah Muni	119	N3801.84 W11702.01	5330
TQQ	Silverbow	77	N3748.00 W11647.00	5500
UTI	St George	23	N3705.29 W11335.53	2871



RWY 3L-21R  
 PCN 46 R/C/W/T  
 RWY 3R-21L  
 PCN 51 R/C/W/T  
 2017

PAR	RWY	CAT	MINIMA		ARP	ELEV	Scale 1:35'500 0 300 600 900 1200 1500 [m] 0 1000 2000 3000 4000 5000 [ft]
	21L	A B D E	2057 - 0.8 200 (200-0.8/1.6)	GS 3°	36° 14.060° N	1857 [ft]	
	3R	A B D E	2057 - 0.8 200 (200-0.8/1.6)	GS 3°	115° 01.058° W	566 [m]	
SRA	21R	A C D E	2257 - 1.2 350 (350-1.2/1.6)				
	3L	A C D E	2257 - 1.2 350 (350-1.2/1.6)				

RWY	TORA	TODA	ASDA	LDA	PSN	THR	ALS
21L	10051 [ft] 3063 [m]	11051 [ft] 3368 [m]	11051 [ft] 3368 [m]	10051 [ft] 3063 [m]	36°14.043° N	115°01.018° W	⊕
3R	10120 [ft] 3084 [m]	11120 [ft] 3398 [m]	11120 [ft] 3398 [m]	10120 [ft] 3084 [m]	36°13.029° N	115°02.038° W	

ATIS	NELLIS GROUND	NELLIS TOWER	NELLIS CONTROL	TACAN	ILS RWY 21L	NELLIS EAST	NELLIS WEST
270.100 MHz	275.800   121.800	327.000   132.55	317.525	LSV 12X	109.10 Mhz	384.400	385.000

# HELICOPTER ARR/DEP VAD-CHART | VALID 2014

**NELLIS AFB (KLSV)**  
LAS VEGAS, NEVADA

ATIS  
270.100  
NELLIS GROUND  
275.800  
NELLIS TOWER  
327.000  
BLACKJACK  
377.800

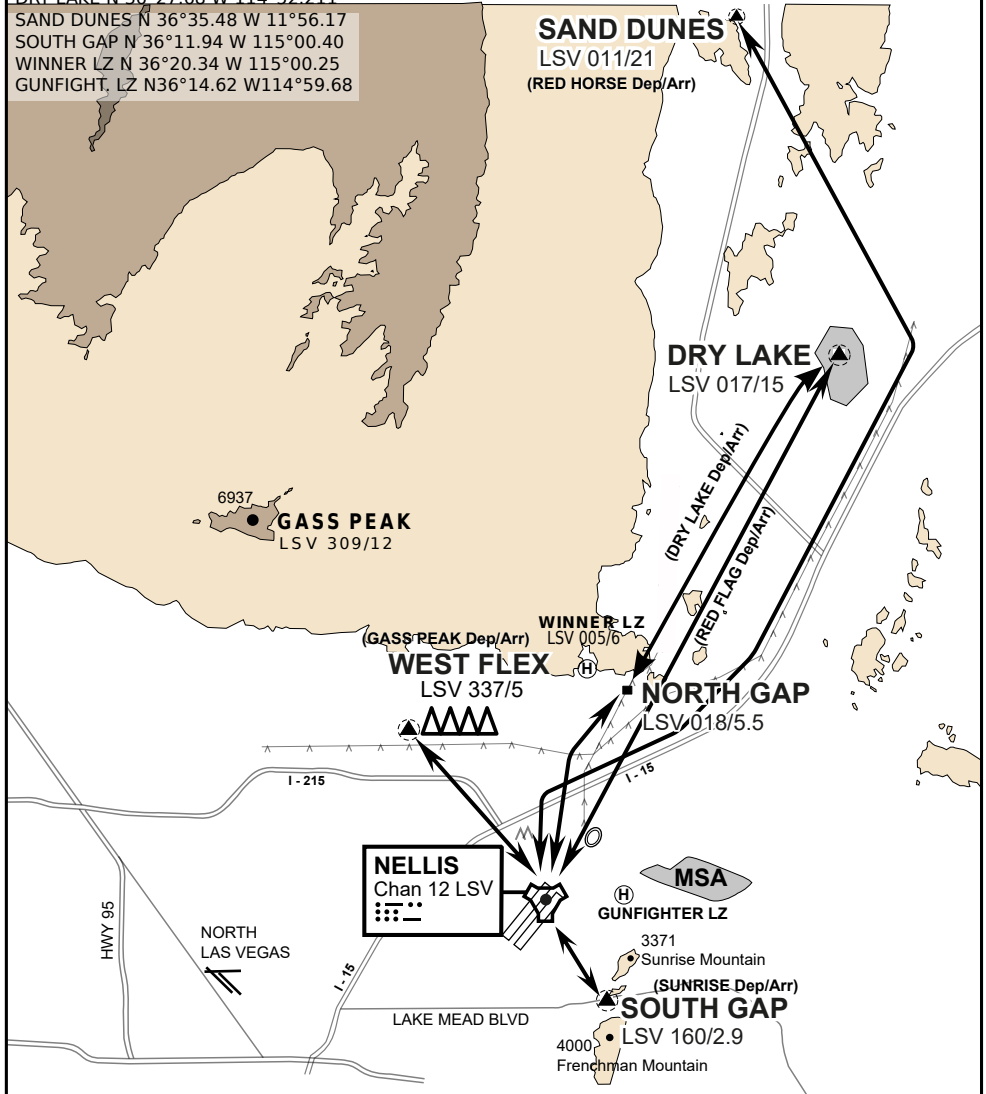
CAUTION: If unable to comply  
with restrictions advise ATC  
prior to departure.

## VMC ONLY

if below WX Minima request SVFR



JOLLY PAD N 36°15.08 W 115°01.65  
WEST FLEX N 36°18.64 W 115°08.00  
NORTH GAP N 36°20.00 W 114°59.30  
DRY LAKE N 36°27.68 W 114°52.211  
SAND DUNES N 36°35.48 W 11°56.17  
SOUTH GAP N 36°11.94 W 115°00.40  
WINNER LZ N 36°20.34 W 115°00.25  
GUNFIGHT, LZ N36°14.62 W114°59.68



vJABeG32NTRR NAV CHART

# HELICOPTER ARRIVAL AND DEPARTURES ROUTES

v.110 22APR20



# HELICOPTER ARR/DEP VAD-CHART | VALID 2014

**NELLIS AFB (KLSV)**  
LAS VEGAS, NEVADA

ATIS  
270.100  
NELLIS GROUND  
275.800  
NELLIS TOWER  
327.000  
BLACKJACK  
377.800

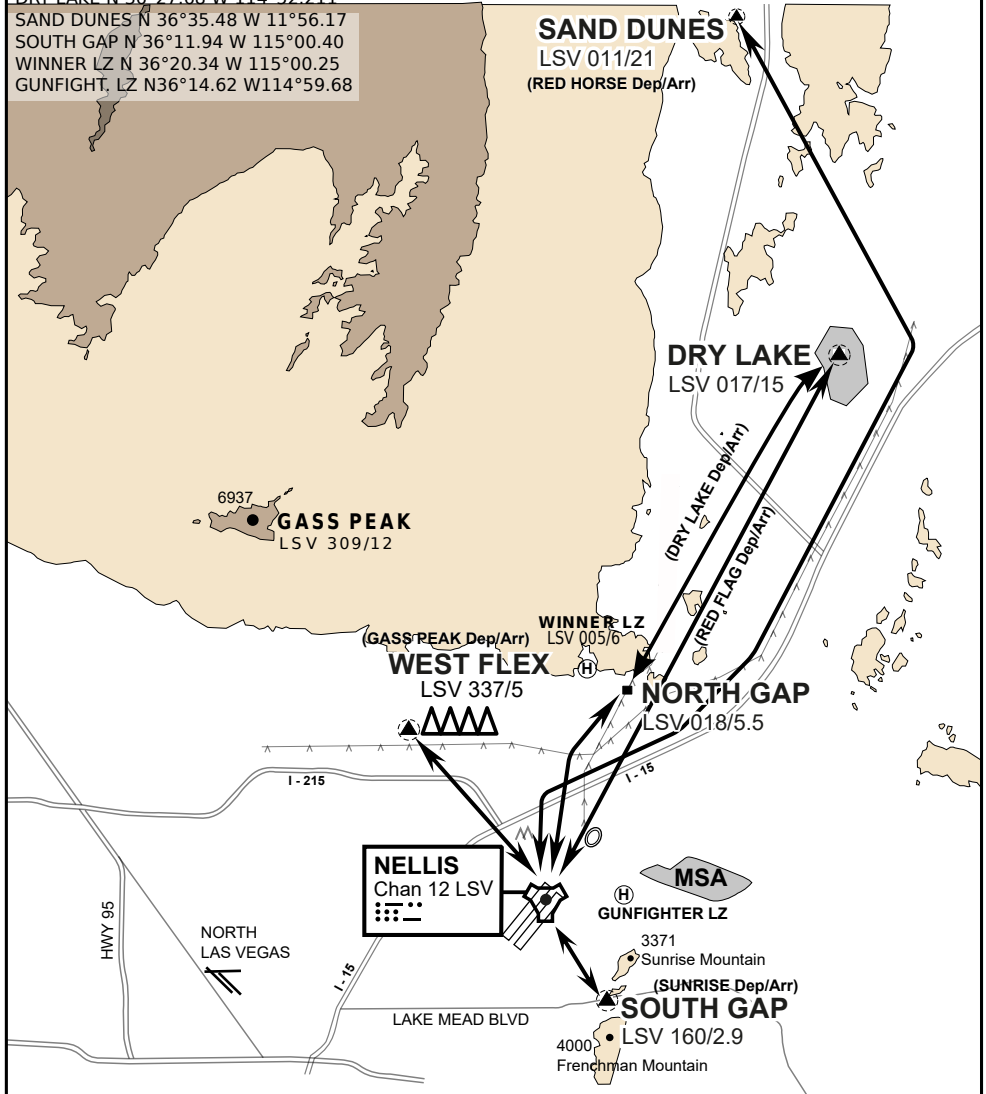
CAUTION: If unable to comply with restrictions advise ATC prior to departure.

## VMC ONLY

if below WX Minima request SVFR



JOLLY PAD N 36°15.08 W 115°01.65  
WEST FLEX N 36°18.64 W 115°08.00  
NORTH GAP N 36°20.00 W 114°59.30  
DRY LAKE N 36°27.68 W 114°52.211  
SAND DUNES N 36°35.48 W 11°56.17  
SOUTH GAP N 36°11.94 W 115°00.40  
WINNER LZ N 36°20.34 W 115°00.25  
GUNFIGHT, LZ N36°14.62 W114°59.68



vJABeG32NTRR NAV CHART

# HELICOPTER ARRIVAL AND DEPARTURES ROUTES

v.110 22APR20