

**MISSION DATA CARD**

OPORD		Callsign		Mission		Date/Time		
1853/2023		Raptor 1		Training		180000APR23		
Task	Bomb Training - High Drag					Freq		
AO	Range 61					134.0		
Departure				Recovery				
DREAM FOUR				STRYK				
#	Callsign		Pilot		IFF	TCN	LSR	NET
-1	Raptor 1-1		Hercules		1611	21Y	1561	
-2	Raptor 1-2		Nerkub		1612	84Y	1562	

**LOADOUT**

A/A	2xA120C, 2xA9X				GUN	100% HEI-T	
A/G	6xM82SE				CHF	120	
POD	HTS, A184, TGP				FLR	0	
TKS	2xFT300				FUEL	100%	

**TOLD**

	Takeoff	Target	Joker	Bingo	Land
FUEL	11169				

**AIRBASES**

	Name	TCN	ATIS	GND	TWR	RWY	Elev	ILS
Dep	Nellis AFB	12X	270.1	275.8	327.0	21L	1850	109.1
Arr	Nellis AFB	12X	270.1	275.8	327.0	21L	1850	109.1

**FLIGHTPLAN**

#	Name	Navaid/Coords/DME	ALT	TOT
1	DREAM	LAS 354/66 BLD 342/71 (N37 10.340 W114 59.530)	20000	
2	TROUTT	LSV 323/63 (N37 17 W115 07.050)	20000	
3	IP	N37 25.471 W115 25.311	6000	
4	T61.01	N37 09.575 W115 25.575	3822	
5	T61.03	N37 09.087 W115 23.513	3778	
6	SARAH	LSV 315/25 (N36 36.450 W115 18.030)	10000	
7	GASS PEAK	LSV 309/12 (N36 24.140 W115 10.660)	9000	
8	Nellis	N36 14.680 W115 01.500	1900	

## OTHER FLIGHTS

Callsign	Mission	Airframe	Freq	TCN	Grpld	Laser
Rattler 1	Training	3x AH-64D	133.5	21/84		125X
AO	Range 63	Task				
Vanguard 1	Training	2x AV-8B N/A	264.55	21/84		168X
AO	Range 64A	Task	Bombing Training			
Panther 6	Training	2x F/A-18C	261.35	31/94		157X
AO	Range 66	Task	Ground Radar Structure - Stand Off			
Tiger 3	Training	2x F/A-18C	261.15	11/74		155X
AO	REV NORTH	Task	BFM Training			
T-Rex 2	Training	4x A-10C	132.25	27/90	25	165X
AO	R62	Task				
Monster 2	Training	4x A-10C	132.15	27/90	21	164X
AO	R62	Task				

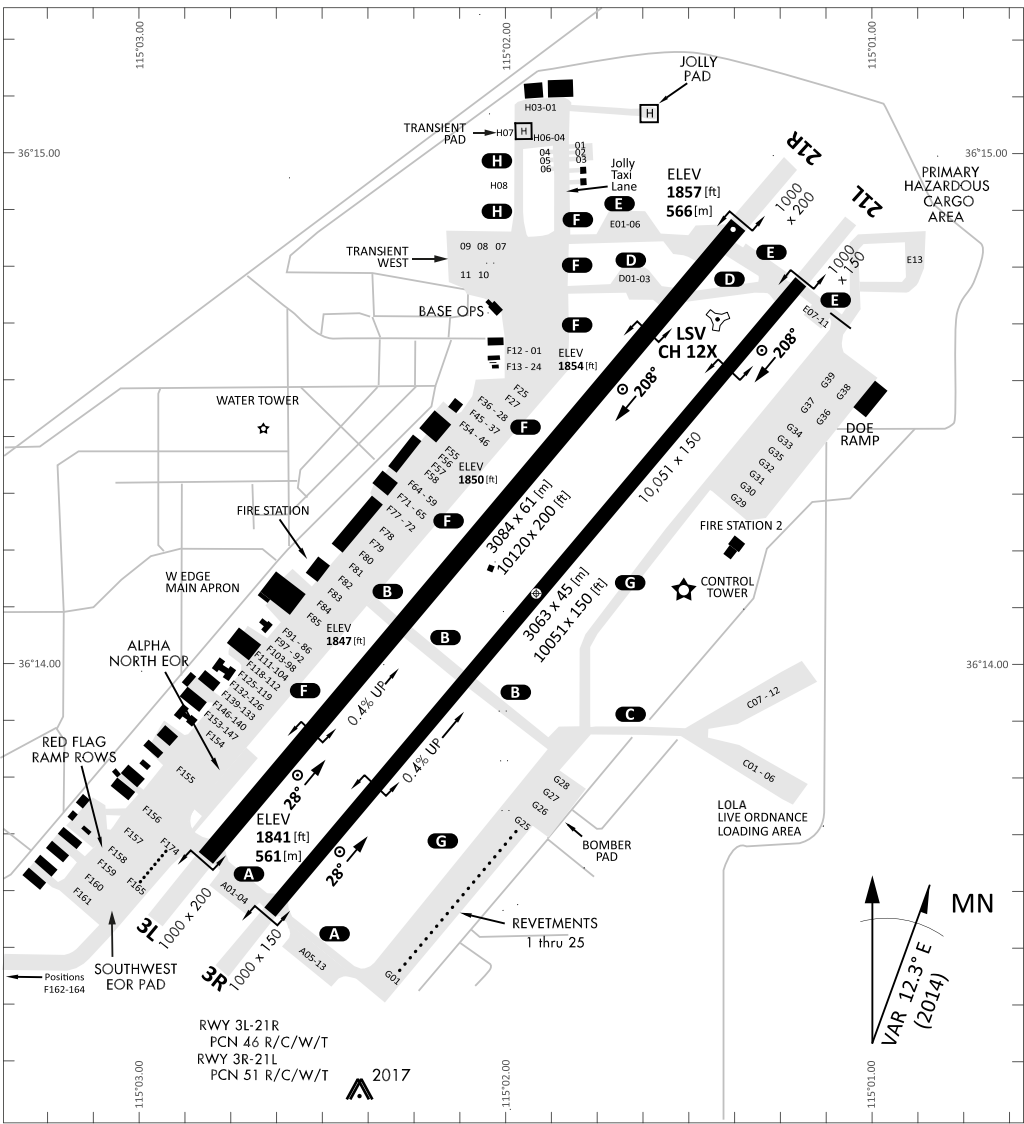
**RADIO CHANNELS**

#	Freq	Name
1		Flight/Squadron specific
2	289.4	Nellis Clearance Delivery
3	275.8	Nellis Ground
4	327.0	Nellis Tower
5	385.4	Nellis Approach/Departure West
6	273.55	Nellis Approach/Departure East
7	317.525	Nellis Control -- Sally
8	254.4	Nellis Control-- Lee
9	305.6	SOF Bullseye
10	343.725	EMERGENCY SINGLE FRQ
11	270.1	Nellis ATIS
12	360.625	Creech AFB Tower
13	250.1	HAVE QUICK 13
14	251.1	HAVE QUICK 14
15	252.1	HAVE QUICK 15
16	377.8	Blackjack
17	265.0	KC-135 AR-641A
18	360.8	KC-135MPRS AR-635
19	319.8	KC-135MPRS AR-625
20	300.05	KC-135 AR-231V

RAMROD										
0	1	2	3	4	5	6	7	8	9	
B	L	A	C	K	H	O	R	S	E	
KTC 1400 C										
	0	1	2	3	4	5	6	7	8	9
A	SIQR	UBW	EHM	PK	OT	CXN	GJ	AF	YD	VL
B	NCGV	WRS	JXA	OL	DI	BHK	TQ	YM	FP	UE
C	GKFU	PNA	VJM	DY	HW	OCE	LS	BX	TI	QR
D	BJAC	IEP	MUL	VD	SR	FTO	KQ	WH	YN	GX
E	SNFA	WIR	HYG	QM	TU	EKX	VP	OB	CL	JD
F	BXPK	DWL	EQJ	OU	NF	MAT	YH	GC	SR	VI
G	GJBS	WKI	YCN	QT	XR	ELA	PF	MU	DV	OH
H	JUVY	ASE	PDK	BR	NL	CFG	TO	MQ	WH	XI
I	VRUA	IMW	DPG	SY	HF	XET	KL	OQ	BN	CJ
J	IBRA	UXS	QLP	ND	WC	JOY	VM	GF	KE	TH
K	QICR	SNF	WVY	HE	XT	BOP	AJ	GK	UD	LM
L	KRVG	MIO	CPU	QB	AD	JXS	EY	LT	NF	HW
M	SMT0	UKY	VCF	GW	HL	NRX	BD	EQ	JP	AI
N	CXFU	VAK	JBP	HL	WR	SET	QM	GN	DI	OY
O	NQLF	TIB	KOE	MR	SV	JHU	WC	XY	AD	GP
P	VRFB	MNQ	HLP	ED	YA	ICW	GS	KU	TO	JX
Q	HGWF	LXO	ANI	VP	RU	SCM	TB	QD	KJ	EY
R	FHNQ	CKO	RST	MY	XW	LEB	PJ	AU	ID	GV
S	BIJL	HFM	EDQ	OA	KV	TXW	RG	YU	NP	CS
T	YEPT	QDA	MCF	BW	VJ	SOR	NG	XL	UH	IK
U	ATRB	EGO	JXP	SN	KU	YIV	FC	QW	LM	HD
V	BACT	NEH	SFK	DI	LQ	VPX	OR	YJ	MU	GW
W	DGKU	HLV	MIJ	XC	YO	AST	QF	NW	RE	PB
X	IHXF	VDE	WPR	TM	SO	LGY	NU	CQ	AB	KJ
Y	IEMQ	UPW	XJO	RH	BK	DNT	LG	CA	VF	SY

**NAVAIDS**

<b>Id</b>	<b>Name</b>	<b>Channel</b>	<b>Position</b>	<b>Elevation</b>
BCE	Bryce Canyon	75	N3741.35 W11218.23	9040
BIH	Bishop	33	N3722.62 W11821.99	4114
BLD	Boulder	114	N3559.75 W11451.82	3650
BTY	Beatty	94	N3648.54 W11644.86	2925
CDC	Cedar City	120	N3747.24 W11304.90	5463
DAG	Daggett	79	N3457.75 W11634.69	1760
EED	Needles	99	N3445.96 W11428.43	650
GFS	Goffs	91	N3507.87 W11510.59	4019
GRL	Groom Lake	18	N3713.91 W11548.16	4475
HEC	Hector	74	N3447.83 W11627.78	1854
ILC	Wilson Creek	110	N3815.02 W11423.65	9318
INS	Creech AFB	87	N3635.20 W11540.12	3101
LAS	McCarran Intl	116	N3604.78 W11509.59	2142
LSV	Nellis	12	N3614.68 W11501.50	1864
MLF	Milford	58	N3821.62 W11300.79	4977
MMM	Mormon Mesa	90	N3646.16 W11416.65	2120
MVA	Mina	98	N3833.92 W11801.97	7860
OAL	Coale Dale	124	N3800.20 W11746.23	4800
PGS	Peach Springs	57	N3537.48 W11332.67	4754
TPH	Tonopah Muni	119	N3801.84 W11702.01	5330
TQQ	Silverbow	77	N3748.00 W11647.00	5500
UTI	St George	23	N3705.29 W11335.53	2871



RWY 3L-21R  
 PCN 46 R/C/W/T  
 RWY 3R-21L  
 PCN 51 R/C/W/T  
 2017

PAR	RWY	CAT	MINIMA	ARP	ELEV	Scale
	21L	A B D E	2057 - 0.8 200 (200-0.8/1.6) GS 3°	36° 14.060° N 115° 01.058° W	1857 [ft] 566 [m]	0 300 600 900 1200 1500 [m] 0 1000 2000 3000 4000 5000 [ft]
	3R	A B D E	2057 - 0.8 200 (200-0.8/1.6) GS 3°			
	21R	A C D E	2257 - 1.2 350 (350-1.2/1.6)			
	3L	A C D E	2257 - 1.2 350 (350-1.2/1.6)			

RWY	TORA	TODA	ASDA	LDA	PSN	THR	ALS
21L	10051 [ft] 3063 [m]	11051 [ft] 3368 [m]	11051 [ft] 3368 [m]	10051 [ft] 3063 [m]	36°14.043' N	115°01.018' W	⊕
3R	10120 [ft] 3084 [m]	11120 [ft] 3398 [m]	11120 [ft] 3398 [m]	10120 [ft] 3084 [m]	36°13.029' N	115°02.038' W	

ATIS	NELLIS GROUND	NELLIS TOWER	NELLIS CONTROL	TACAN	ILS RWY 21L	NELLIS EAST	NELLIS WEST
270.100 MHz	275.800   121.800	327.000   132.55	317.525	LSV 12X	109.10 Mhz	384.400	385.000

# DREAM FOUR DEPARTURE DREAM4 | VALID 2014

**NELLIS AFB (KLSV)**  
LAS VEGAS, NEVADA

ATIS  
270.100  
NELLIS GROUND  
275.800  
NELLIS TOWER  
327.000  
NELLIS CONTROL  
317.525  
NELLIS DEP/APP EAST  
384.400  
BLACKJACK  
377.800

**DREAM**  
N3710.34  
W11459.53

**MINTT**  
LAS 351/38  
17,000

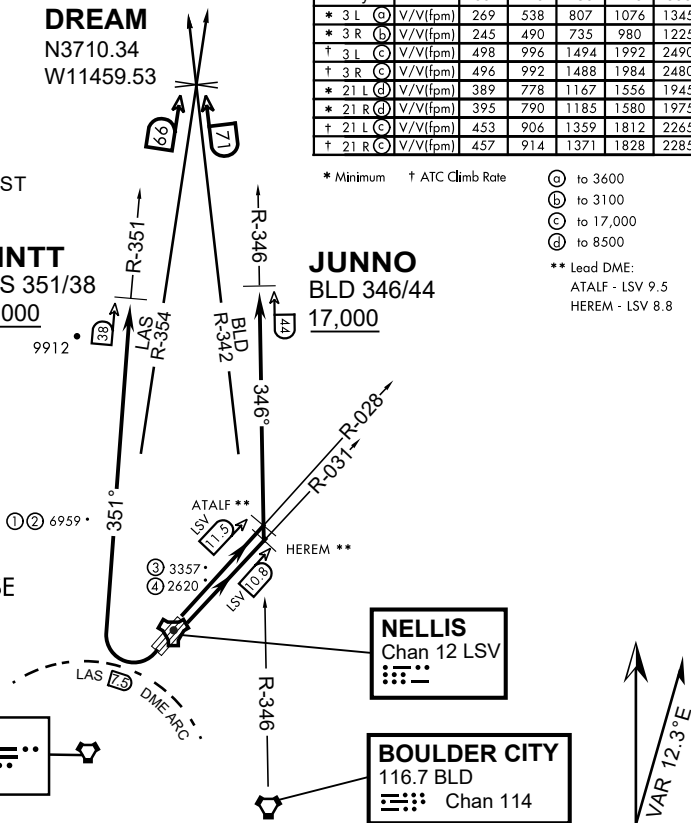
**JUNNO**  
BLD 346/44  
17,000

Rwy	Knots	60	120	180	240	300	360
* 3 L (A)	V/V(fpm)	269	538	807	1076	1345	1614
* 3 R (B)	V/V(fpm)	245	490	735	980	1225	1470
† 3 L (C)	V/V(fpm)	498	996	1494	1992	2490	2988
† 3 R (C)	V/V(fpm)	496	992	1488	1984	2480	2976
* 21 L (D)	V/V(fpm)	389	778	1167	1556	1945	2334
* 21 R (D)	V/V(fpm)	395	790	1185	1580	1975	2370
† 21 L (C)	V/V(fpm)	453	906	1359	1812	2265	2718
† 21 R (C)	V/V(fpm)	457	914	1371	1828	2285	2742

\* Minimum † ATC Climb Rate

- (A) to 3600
  - (B) to 3100
  - (C) to 17,000
  - (D) to 8500
- \*\* Lead DME:  
ATALF - LSV 9.5  
HEREM - LSV 8.8

- ① 12.24 NM from Rwy 21R
- ② 12.40 NM from Rwy 21L
- ③ 5.67 NM from Rwy 3L
- ④ 5.85 NM from Rwy 3R



## NOT FOR CIVIL USE

CAUTION: If unable to comply with restrictions advise ATC prior to departure.

## DEPARTURE ROUTE DESCRIPTION

### TAKE-OFF RWY 3L

- Fly runway heading to intercept the LSV TACAN R-028 then direct ATALF, intercept the BLD VORTAC R-346 then direct JUNNO, cross JUNNO at or above 17,000, then via assigned route.

### TAKE-OFF RWY 3R

- Fly runway heading to intercept the LSV TACAN R-031 then direct HEREM, intercept the BLD VORTAC R-346 then direct JUNNO, cross JUNNO at or above 17,000, then via assigned route.

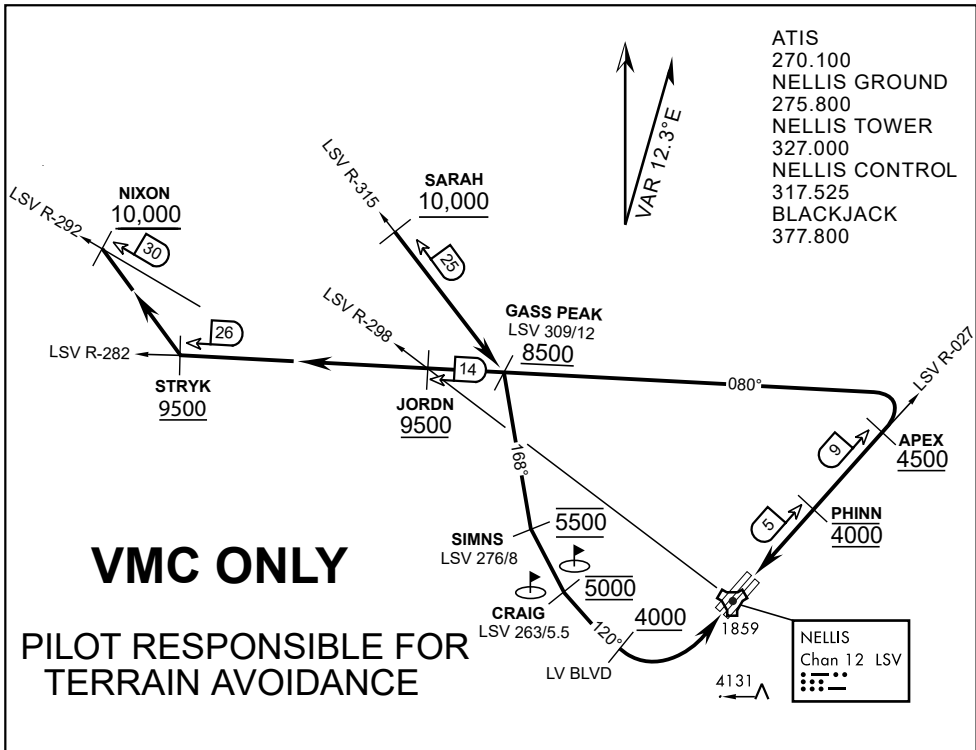
### TAKE-OFF RWY 21L/R

- Turn right to intercept LAS VORTAC R-351 outbound. Remain North of LAS 7.5 DME turning Northbound. Intercept LAS R-351 between 5000 and 6000, do not proceed West of LAS R-351. Cross MINTT at or above 17,000, then via assigned route.

NOISE ABATMENT PROCEDURES: Fly acc. Nellis Noise Abatement instructions

# DREAM FOUR DEPARTURE (DREAM4 • DREAM)





ATIS  
 270.100  
 NELLIS GROUND  
 275.800  
 NELLIS TOWER  
 327.000  
 NELLIS CONTROL  
 317.525  
 BLACKJACK  
 377.800

**VMC ONLY**

**PILOT RESPONSIBLE FOR TERRAIN AVOIDANCE**

**APPROACH ROUTE DESCRIPTION**

**APPROACH RWY 3L/R**

Cross STRYK at or above 9,500' MSL, proceed direct GASS PEAK. Cross JORDN at or above 9,500' MSL, cross GASS PEAK at or above 8,500' MSL. Proceed direct SIMNS and cross at 5,500' MSL. Cross Las Vegas Blvd at or above 4,000' MSL then to 3,500' MSL for Initial. Remain within 4 DME if LSV on turn to final.

**VFR STRAIGHT-IN RWY 3L/R**

Depart CRAIG & descend to be at 3,000' MSL by Las Vegas Blvd. Do not descend below 3,000' MSL until within 5 DME of LSV or 4 NM of the runway on turn to final.

**APPROACH RWY 21L/R**

Cross STRYK at or above 9,500' MSL, proceed direct GASS PEAK. Cross JORDN at or above 9,500' MSL, cross GASS PEAK at or above 8,500' MSL. Cross APEX at or above 4,500' MSL then direct 5NM initial. Descend to cross PHINN at 4,000' MSL, Inside 5 NM descend to 3,500' MSL.

**VFR STRAIGHT-IN RWY 21L/R**

Cross APEX at 4,000' MSL. Descend to be at 3,000' MSL at PHINN. Descend to 3,000' MSL at LSV 027/5.

**RANGE 63B EXIT**

**SOUTH:** Via NIXON at or above 10,000' MSL, then direct STRYK.

**EAST:** Via SARAH at or above 10,000' MSL, then direct GASS PEAK.