

MISSION DATA CARD

OPORD		Callsign		Mission		Date/Time		
1756/2023		Rattler 1		Training		272000MAR23		
Task	NOE vs SAM					Freq		
AO	Sa10 hot					133.5		
Departure				Recovery				
Helicopter VFR				Helicopter VFR				
#	Callsign		Pilot		IFF	TCN	LSR	NET
-1	Rattler 1-1		Warblade		4611	21Y	1561	
-2	Rattler 1-2		Mütze		4612	84Y	1562	

LOADOUT

A/A					GUN	100% HEDP	
A/G	16xAGM114K				CHF	30	
POD					FLR	60	
TKS					FUEL	100%	

TOLD

	Takeoff	Target	Joker	Bingo	Land
FUEL	2513				

AIRBASES

	Name	TCN	ATIS	GND	TWR	RWY	Elev	ILS
Dep	Akrotiri AFB	107X	288.2	240.1	339.85	28	62	109.7
Arr	Akrotiri AFB	107X	288.2	240.1	339.85	28	62	109.7
Div	Lakatamia Helicopter Airbase				251.95	35	757	

FLIGHTPLAN

#	Name	Navaid/Coords/DME	ALT	TOT
1	LAKE	N34 45.150 E032 55.400		
2	entry	N35 20.180 E033 04.060		
3	SA10.T1	N35 20.956 E033 17.500		
4	Lakatamia AB	N35 06.310 E033 19.260		

COMMS

Radio	Usage
1	133.50
2	288.2 / 339.85 / 377.8
3	35.35

OTHER FLIGHTS

Callsign	Mission	Airframe	Freq	TCN	Grpld	Laser
Vanguard 1	Training	1x AV-8B N/A	264.55	21/84		156X
AO	AKAMAS	Task	Bombing Training			
Edelweiss 1	Training	4x F-16C	134.0	21/84		156X
AO		Task	LCR Check VFR			
Edelweiss 1	Training	4x F-16C	134.0	21/84		156X
AO		Task	LCR Check IFR			
Raptor 1	Training	4x F-16C	134.5	21/84		156X
AO		Task	GBU 31/3 Training Capa Pyla			
T-Rex 2	Training	4x A-10C	132.25	27/90	25	165X
AO	Nicosia CAS and CHT	Task	AI			
Tiger 1	Strike	4x F/A-18C	261.15	21/84	1	156X
AO	Homs 30B32	Task	Strike ATO1002			

RADIO CHANNELS

#	Freq	Name
1		Flight/Squadron specific
2	288.2	Akrotiri ATIS
3	240.1	Akrotiri Ground
4	339.85	Aktrotiri Tower
5	335.05	Akrotiri Approach
6	360.1	Incirlik Tower
7	371.35	Incirlik Ground
8	377.475	Incirlik ATIS
9		No Preset
10	127.3	Paphos ATIS
11	353.8	Paphos Tower
12	304.0	CVN-73 George Washington
13	302.0	LHA-1 Tarawa
14	259.0	CV-59 Forrestal
15		No Preset
16	377.8	Overlord
17	265.0	KC-135 Texaco-1 medium/slow
18	319.8	KC-135 Arco-1
19	360.8	KC-135MPRS Arco-2
20	256.0	S-3B Recovery Tanker

RAMROD

0	1	2	3	4	5	6	7	8	9
T	O	U	C	H	I	N	G	L	Y

KTC 1400 C

	0	1	2	3	4	5	6	7	8	9
A	DWML	GKX	ECU	YA	VT	HJP	FR	SB	QN	IO
B	VIYR	DNJ	SPQ	UK	XH	OBA	GC	TF	MW	EL
C	VFGX	SDT	MHN	RK	JY	WEL	PC	IA	QB	OU
D	VNYC	WQA	XJS	LH	RU	MGB	PF	TI	KE	DO
E	ETLR	WCA	OPF	XH	IS	QUK	BV	DM	GN	JY
F	NEQT	OMR	PWB	ID	FH	AJL	GX	SU	VK	CY
G	IGTL	HKP	CFA	JX	BY	ORM	QD	SE	NW	UV
H	BCRO	YSV	UTL	QG	AM	WIF	PJ	HD	KX	NE
I	WHXA	NQS	EGO	PR	FT	VDC	KL	JB	YM	IU
J	JQIE	PCN	WTU	YD	KH	GOR	VS	FM	BA	LX
K	EMTJ	SLU	KGB	DQ	VW	RFX	CH	PO	IY	AN
L	CYDF	EPH	XNV	KJ	IR	TUW	MS	AL	GO	QB
M	GDHI	MOT	FUK	EJ	RB	YSQ	LW	XC	PA	NV
N	JLKP	SBU	VYQ	TA	GX	HMI	DC	RN	OW	FE
O	PMKN	DTG	WSH	UR	AY	JLI	CQ	BV	XO	FE
P	IMTY	EAH	UKW	VL	XG	CDO	JR	PQ	BS	FN
Q	DYMB	SPJ	QTX	RW	CK	ULH	VN	EO	IG	AF
R	YRAB	OGL	VIX	FU	JC	MQH	WD	KP	NE	TS
S	QAWK	GEF	JDI	BV	MR	HNY	CP	XS	TU	OL
T	GDNV	CRQ	EJS	OY	FA	MLK	UB	WH	PI	XT
U	ABYR	JEW	NQK	LI	SD	OPF	HV	TU	CM	GX
V	DHNY	TSU	JPW	RL	MI	XBE	FV	GA	KC	OQ
W	XSDP	OLV	HEI	FU	QC	TKW	RB	NA	YG	MJ
X	CTOF	LXB	GAY	JD	QU	VNP	IM	KH	SE	RW
Y	NXJI	UTH	WGE	AR	KQ	SBO	CY	MF	VD	LP

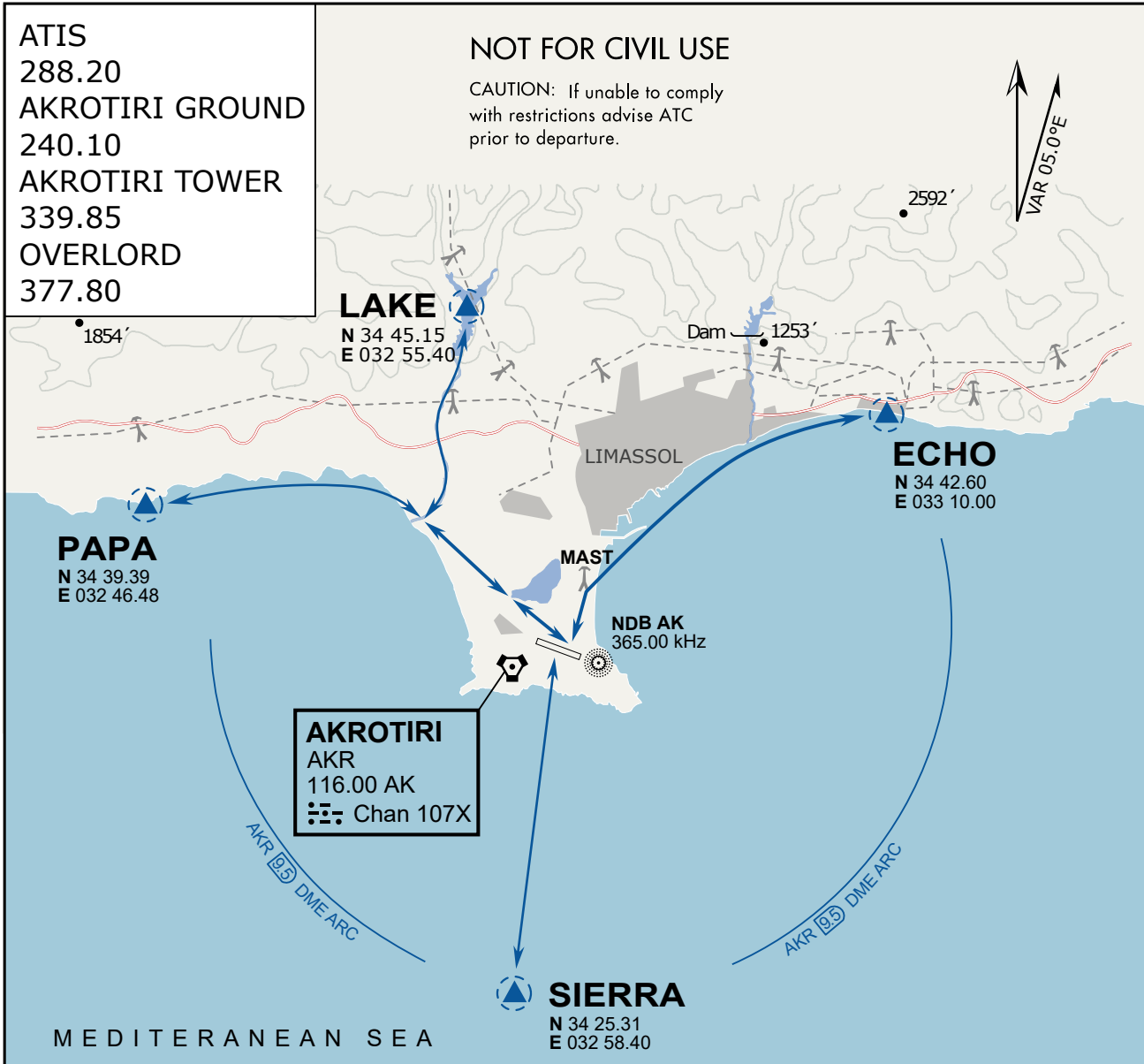
NAVAIDS

Id	Name	Channel	Position	Elevation
DAN	Incirlik	21	N37 00.950 E035 26.883	243
AKR	Akrotiri	107	N34 34.765 E032 57.769	147
PHA	Paphos	79	N34 42.997 E032 28.963	35
RMD	Ramat David	84	N32 39.892 E035 11.265	136
OS66	Kuweires Military Aviation Institute	36	N36 11.362 E037 34.226	1200

**FOR DCS
 USE ONLY**



ATIS	AKROTIRI GND	AKROTIRI TWR	OVERLORD CONTROL	TACAN	FIELD ELEVATION
288.20 MHz	240.10 122.10	339.85 130.075	377.8	AKR 107X	75 [ft] 23 [m]



ARR / DEP ROUTE DESCRIPTION

GENERAL

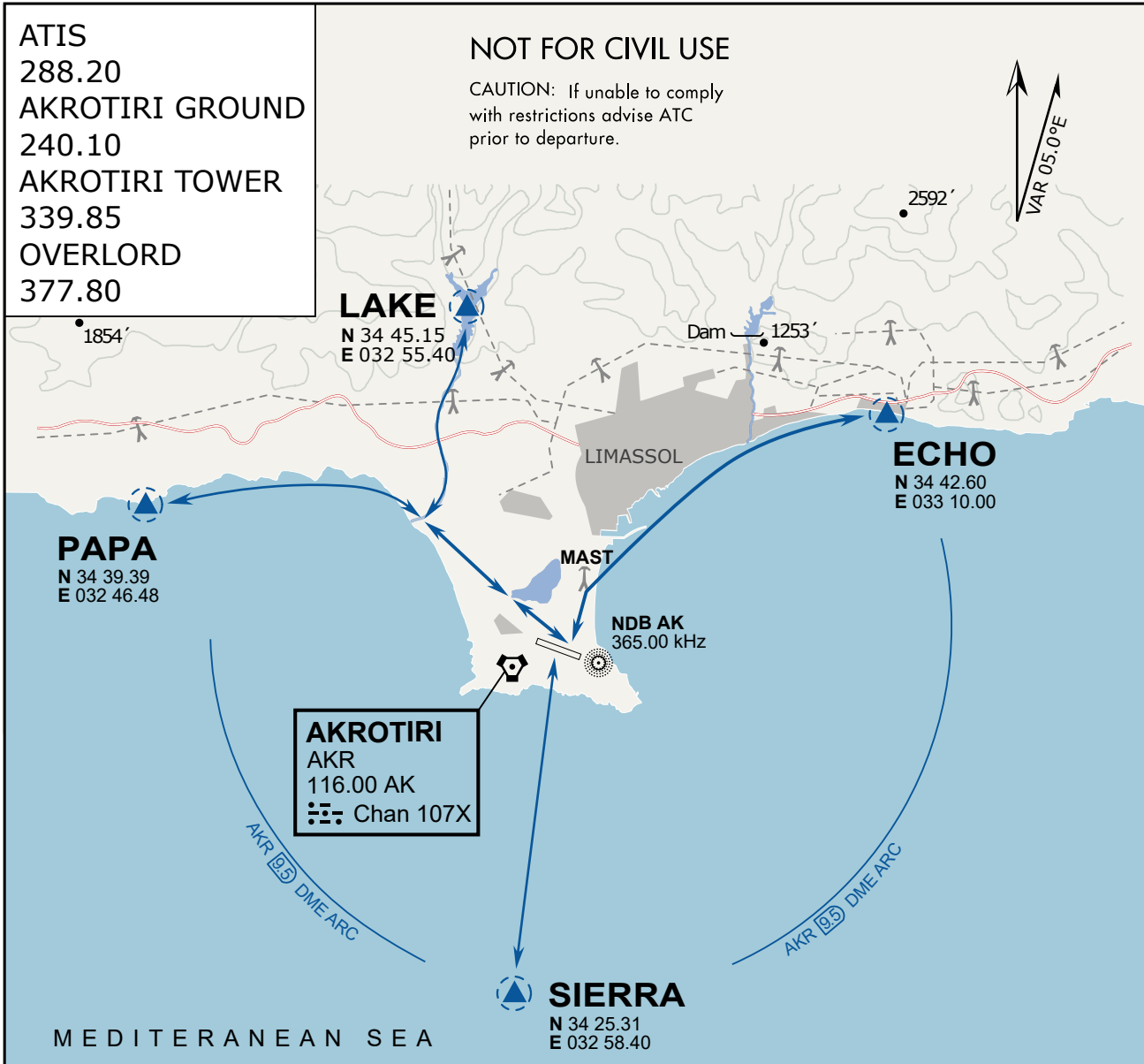
Stay at or below 500' AGL.

DEPARTURE

- ECHO: Via the 4 masts, along the coastline to EXIT.
- LAKE: Stay SOUTH WEST of the dry lake, to the river mouth, follow river to EXIT.
- PAPA: Stay SOUTH WEST of the dry lake, follow coastline to EXIT.
- SIERRA: Direct EXIT.

ARRIVAL

- LAKE: Follow river to coastline, then direct LCRA.
- PAPA: Follow coastline to rivermouth, then direct LCRA.
- ECHO: Follow coastline to the 4 masts, then to LCRA.
- SIERRA: Direct to LCRA.



ARR / DEP ROUTE DESCRIPTION

GENERAL

Stay at or below 500' AGL.

DEPARTURE

- ECHO: Via the 4 masts, along the coastline to EXIT.
- LAKE: Stay SOUTH WEST of the dry lake, to the river mouth, follow river to EXIT.
- PAPA: Stay SOUTH WEST of the dry lake, follow coastline to EXIT.
- SIERRA: Direct EXIT.

ARRIVAL

- LAKE: Follow river to coastline, then direct LCRA.
- PAPA: Follow coastline to rivermouth, then direct LCRA.
- ECHO: Follow coastline to the 4 masts, then to LCRA.
- SIERRA: Direct to LCRA.

NOT AVAILABLE

NOT AVAILABLE