

**MISSION DATA CARD**

OPORD	Callsign	Mission	Date/Time			
1741/2023	Rattler 1	Training	202000MAR23			
Task						Freq
AO	Umland Akrotiri innerhalb CTR					133.5
Departure			Recovery			
Helicopter VFR			Helicopter VFR			
#	Callsign	Pilot	IFF	TCN	LSR	NET
-1	Rattler 1-1	Hudson	4611	21Y	1561	
-2	Rattler 1-2	Mütze	4612	84Y	1562	
-3	Rattler 1-3	Laud	4613	84X	1563	
-4	Rattler 1-4	Jemi	4614	21X	1564	

**LOADOUT**

A/A		GUN	
A/G		CHF	
POD		FLR	
TKS		FUEL	

**TOLD**

	Takeoff	Target	Joker	Bingo	Land
FUEL	3170				

**AIRBASES**

	Name	TCN	ATIS	GND	TWR	RWY	Elev	ILS
Dep	Akrotiri AFB	107X	288.2	240.1	339.85	28	62	109.7
Arr	Akrotiri AFB	107X	288.2	240.1	339.85	28	62	109.7

**COMMS**

Radio	Usage
1	133.50
2	288.2 / 339.85 / 377.8
3	35.35

## OTHER FLIGHTS

Callsign	Mission	Airframe	Freq	TCN	Grpld	Laser
Raptor 1	Training	4x F-16C	134.0	21/84		156X
AO	Paphos INT	Task	Flameout Training			
Edelweiss 2	Training	2x F-16C	134.5	21/84		156X
AO	SA-10	Task	SAM Traing			
Vanguard 1	Training	1x AV-8B N/A	264.55	21/84		156X
AO	AKAMAS	Task	AAR / BOMBING TRAINING			
Tiger 1	Training	4x F/A-18C	261.45	21/84		156X
AO	Y-BVR Blue	Task	BVR - CTF			
Panther 1	Training	4x F/A-18C	261.35	21/84		156X
AO	Y-BVR Red	Task	BVR - CTF			
T-Rex 3	Training	3x A-10C	132.25	15/78	25	156X
AO	Convoy hunt Training Range	Task	Convoy Hunt			
Raptor 4	Training	4x F-16C	132.15	21/84		156X
AO		Task	Coin Mission			

**RADIO CHANNELS**

#	Freq	Name
1		Flight/Squadron specific
2	288.2	Akrotiri ATIS
3	240.1	Akrotiri Ground
4	339.85	Aktrotiri Tower
5	335.05	Akrotiri Approach
6	360.1	Incirlik Tower
7	371.35	Incirlik Ground
8	377.475	Incirlik ATIS
9		No Preset
10	127.3	Paphos ATIS
11	353.8	Paphos Tower
12	304.0	CVN-73 George Washington
13	302.0	LHA-1 Tarawa
14	259.0	CV-59 Forrestal
15		No Preset
16	377.8	Overlord
17	265.0	KC-135 Texaco-1 medium/slow
18	319.8	KC-135 Arco-1
19	360.8	KC-135MPRS Arco-2
20	256.0	S-3B Recovery Tanker

**RAMROD**

0	1	2	3	4	5	6	7	8	9
I	N	C	U	R	A	B	L	E	S

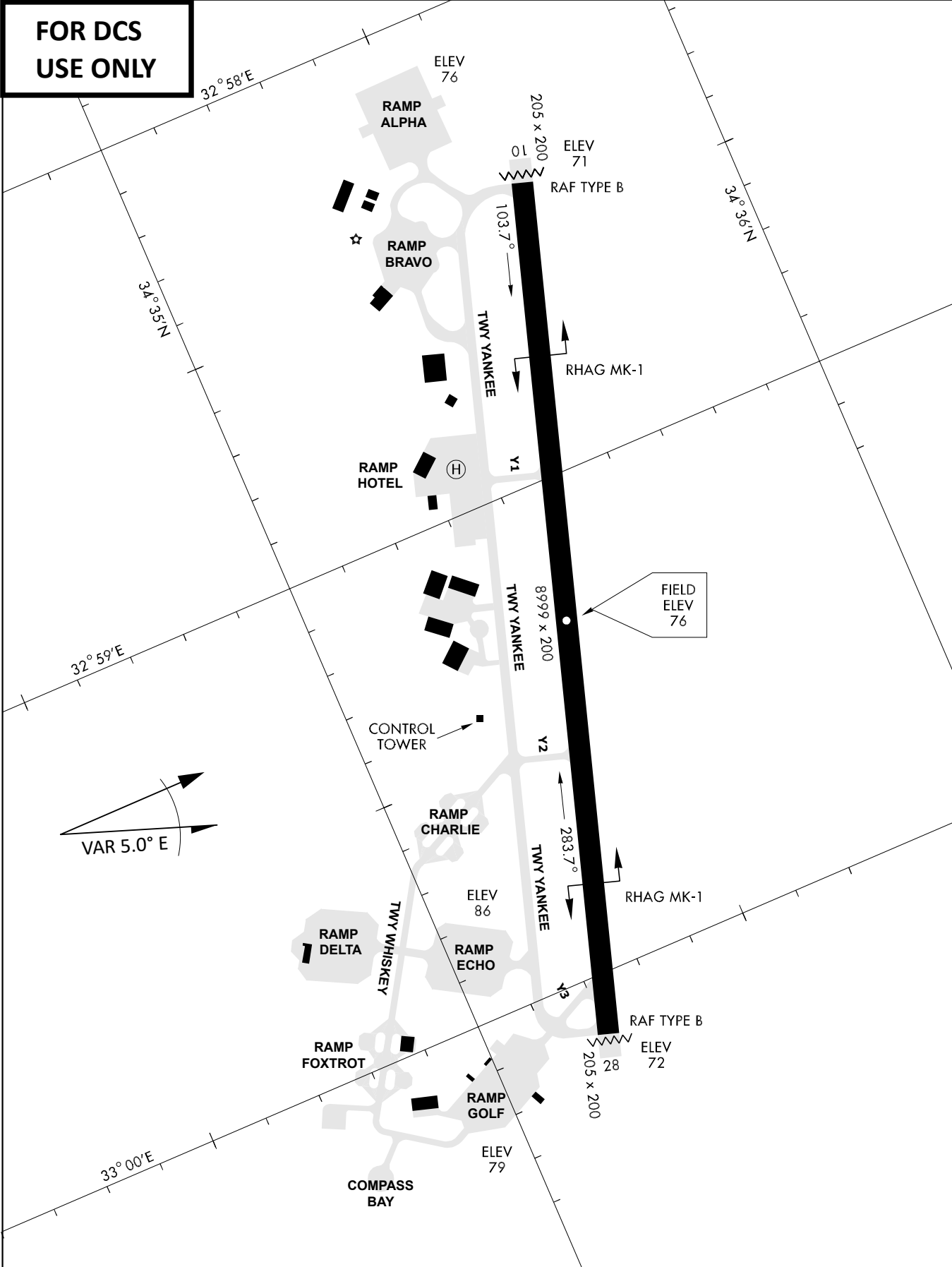
**KTC 1400 C**

	0	1	2	3	4	5	6	7	8	9
A	KAOG	REU	VHY	QC	LP	IXM	SW	BT	DF	JN
B	HRAF	XJI	QVO	EB	GL	DWC	YP	MS	NU	TK
C	FVGT	RQU	WXS	HO	NI	AKY	CP	DB	JM	EL
D	DXNH	LAI	KSB	RQ	GE	VTP	CU	YW	FO	MJ
E	JEYG	TKO	RHX	CL	NP	QIU	VD	WA	BF	SM
F	SIHR	JFW	GDY	PX	ML	KAN	BT	EV	CQ	UO
G	SHBC	QRU	GTF	EP	IN	JOD	XV	KA	WL	MY
H	OKNJ	TFS	LWB	QX	RM	DCI	PE	UV	HG	YA
I	MPOE	TNA	UVQ	YG	LB	CSI	WX	DK	HR	FJ
J	RAIF	PHS	OBG	XD	EU	JKT	CV	QW	YL	NM
K	SEHD	MTF	QIP	CK	GV	WJB	NL	AO	XR	UY
L	VIRX	FEC	BOP	TL	SY	KDA	QW	NU	HJ	MG
M	VESQ	UMD	AXO	NK	TR	HJP	FG	IC	LW	BY
N	VEPB	FGR	YWT	KX	MD	CLU	AJ	OH	IQ	SN
O	UGXN	AWD	QVS	OC	HJ	RTL	BE	KY	FI	MP
P	DMCH	KAQ	FGB	PO	RE	YVX	TW	UI	SJ	NL
Q	NILQ	AUS	OGK	DP	CY	TXW	MR	HE	BF	JV
R	RCMG	USY	LQP	HW	TE	KBJ	OX	AD	IF	NV
S	PEKW	LGR	AHS	YV	JQ	BUX	CN	TO	MF	DI
T	VUIR	NSF	BGW	QJ	LD	YET	PX	CH	AM	OK
U	GIVL	WYU	THR	BF	XK	NSA	DE	PJ	QC	MO
V	PGAN	KDY	XWO	BL	EH	QFT	IC	SM	RJ	VU
W	MBXG	TCY	WFE	VR	AO	KLH	SD	IJ	UP	NQ
X	VDPY	AIN	KWU	LC	JO	XBR	FE	QH	GT	MS
Y	ARBE	IPN	FYC	TH	LV	MKO	JD	SX	WQ	GU

**NAVAIDS**

Id	Name	Channel	Position	Elevation
DAN	Incirlik	21	N37 00.950 E035 26.883	243
AKR	Akrotiri	107	N34 34.765 E032 57.769	147
PHA	Paphos	79	N34 42.997 E032 28.963	35
RMD	Ramat David	84	N32 39.892 E035 11.265	136

**FOR DCS  
 USE ONLY**



ATIS	AKROTIRI GND	AKROTIRI TWR	OVERLORD CONTROL	TACAN	FIELD ELEVATION
288.20 MHz	240.10   122.10	339.85   130.075	377.8	AKR 107X	<b>75 [ft] 23 [m]</b>

ATIS  
288.20  
AKROTIRI GROUND  
240.10  
AKROTIRI TOWER  
339.85  
OVERLORD  
377.80

NOT FOR CIVIL USE

CAUTION: If unable to comply with restrictions advise ATC prior to departure.



## ARR / DEP ROUTE DESCRIPTION

### GENERAL

Stay at or below 500' AGL.

### DEPARTURE

ECHO: Via the 4 masts, along the coastline to EXIT.

LAKE: Stay SOUTH WEST of the dry lake, to the river mouth, follow river to EXIT.

PAPA: Stay SOUTH WEST of the dry lake, follow coastline to EXIT.

SIERRA: Direct EXIT.

### ARRIVAL

LAKE: Follow river to coastline, then direct LCRA.

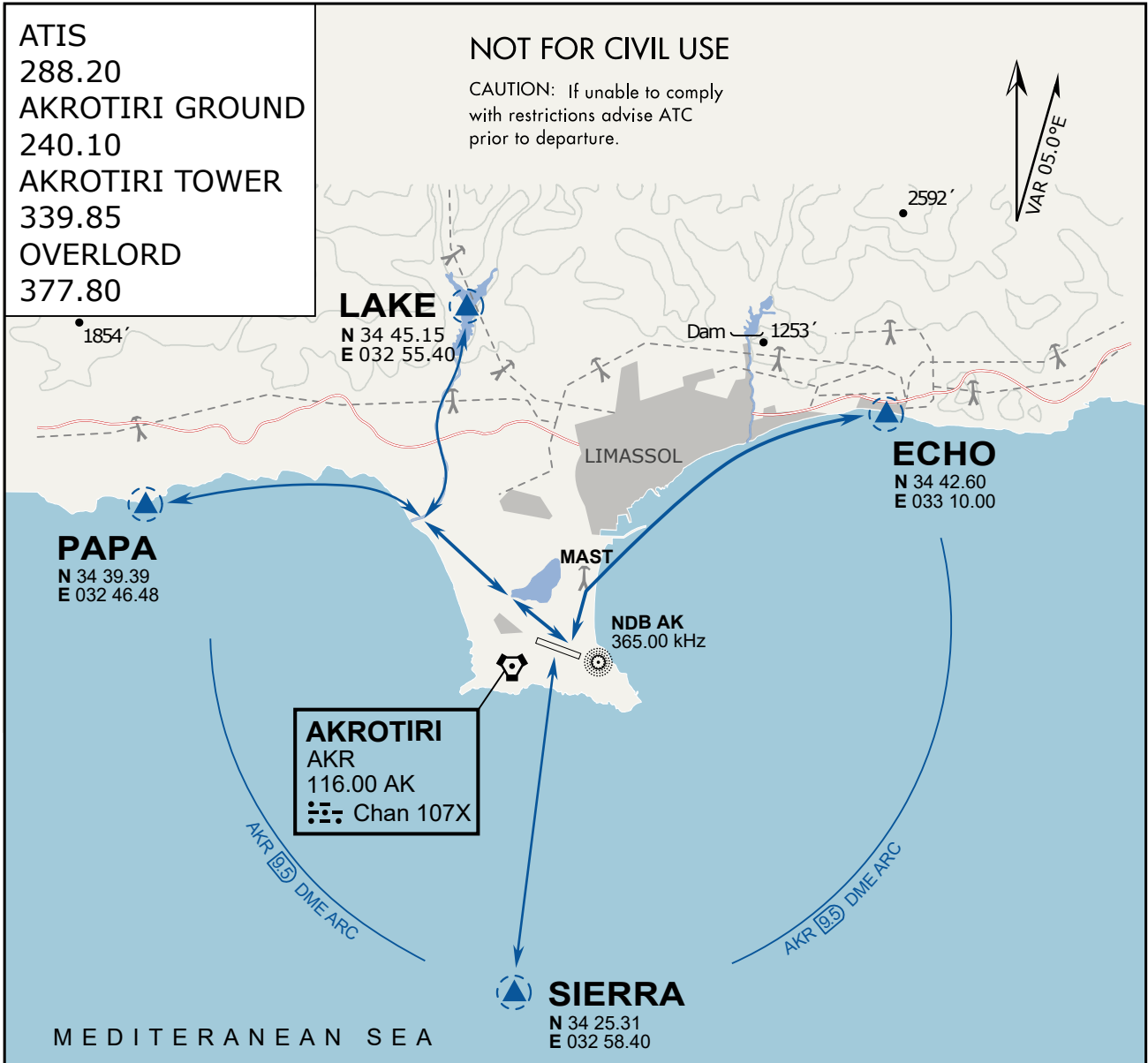
PAPA: Follow coastline to rivermouth, then direct LCRA.

ECHO: Follow coastline to the 4 masts, then to LCRA.

SIERRA: Direct to LCRA.







### ARR / DEP ROUTE DESCRIPTION

#### GENERAL

Stay at or below 500' AGL.

#### DEPARTURE

- ECHO: Via the 4 masts, along the coastline to EXIT.
- LAKE: Stay SOUTH WEST of the dry lake, to the river mouth, follow river to EXIT.
- PAPA: Stay SOUTH WEST of the dry lake, follow coastline to EXIT.
- SIERRA: Direct EXIT.

#### ARRIVAL

- LAKE: Follow river to coastline, then direct LCRA.
- PAPA: Follow coastline to rivermouth, then direct LCRA.
- ECHO: Follow coastline to the 4 masts, then to LCRA.
- SIERRA: Direct to LCRA.