

MISSION DATA CARD

OPORD		Callsign		Mission		Date/Time		
1673/2023		Edelweiss 2		Training		272130FEB23		
Task	System Check					Freq		
AO	Akrotiri					264.25		
Departure				Recovery				
RWY28 VFR				RWY28 VFR				
#	Callsign		Pilot		IFF	TCN	LSR	NET

LOADOUT

A/A		GUN	
A/G		CHF	
POD		FLR	
TKS		FUEL	

TOLD

	Takeoff	Target	Joker	Bingo	Land
FUEL	10803				

AIRBASES

	Name	TCN	ATIS	GND	TWR	RWY	Elev	ILS
Dep	Akrotiri AFB	107X	288.2	240.1	339.85	28	62	109.7
Arr	Akrotiri AFB	107X	288.2	240.1	339.85	28	62	109.7
Div	Incirlik AFB	21X	$\frac{377.47}{5}$	371.35	360.1	5	190	

FLIGHTPLAN

#	Name	Navaid/Coords/DME	ALT	TOT
1	1	N34 02 48.975 E033 01 27.967	15000	
2	TALD	N34 17 38.618 E032 27 43.524	15000	
3	3	N34 07 26.009 E032 25 45.461	15000	
4	119TALD	N34 17 43.299 E032 24 30.847	15000	
5	5	N34 07 32.524 E032 22 01.144	15000	
6	115	N34 17 47.981 E032 21 18.171	15000	
7	TARGET	N34 57 42.951 E032 23 18	1100	
8	8	N33 46 05.595 E033 00 42.010	15000	

COMMS

Radio	Usage
2	264.25

OTHER FLIGHTS

Callsign	Mission	Airframe	Freq	TCN	Grpld	Laser
Beast 4	Training	4x AH-64D	133.5	21/84		156X
AO	Insurgent Town easy u hard cold. CAS Range		Task			
Tiger 1	Training	4x F/A-18C	261.15	21/84	1	156X
AO	Ercan Airfield		Task	JDAM Training		
Tiger 3	Training	4x F/A-18C	261.35	23/86	1	156X
AO	Ercan Airfield		Task	JDAM Training		
Edelweiss 2	Training	4x F-16C	261.25	21/84		156X
AO			Task			
T-Rex 2	Training	2x A-10C	132.25	21/84	25	156X
AO	CAS Range		Task	Carpet Bombing		
Monster 1	Training	2x A-10C	132.15	21/84	24	156X
AO	CAS Range		Task	Carpet Bombing		
Edelweiss 3	Training	4x F-16C	134.0	21/84		156X
AO			Task			

RADIO CHANNELS

#	Freq	Name
1		Flight/Squadron specific
2	288.2	Akrotiri ATIS
3	240.1	Akrotiri Ground
4	339.85	Aktrotiri Tower
5	335.05	Akrotiri Approach
6	360.1	Incirlik Tower
7	371.35	Incirlik Ground
8	377.475	Incirlik ATIS
9		No Preset
10	127.3	Paphos ATIS
11	353.8	Paphos Tower
12	304.0	CVN-73 George Washington
13	302.0	LHA-1 Tarawa
14	259.0	CV-59 Forrestal
15		No Preset
16	377.8	Overlord
17	265.0	KC-135 Texaco-1 medium/slow
18	319.8	KC-135 Arco-1
19	360.8	KC-135MPRS Arco-2
20	256.0	S-3B Recovery Tanker

RAMROD

0	1	2	3	4	5	6	7	8	9
M	I	S	T	A	K	E	N	L	Y

KTC 1400 C

	0	1	2	3	4	5	6	7	8	9
A	NRPI	TSJ	AOL	YD	KV	GEU	MB	XW	HC	QF
B	QWV	UML	EIS	JX	OG	YBK	DT	CN	HR	AP
C	QBJL	SEC	XND	VO	PY	WKG	FR	MT	UA	HI
D	KSER	QBX	VGT	PC	YH	DLJ	FN	AU	MO	WI
E	VJYN	EOM	UKS	TC	BL	WHF	IA	XR	QP	DG
F	LBIE	YUR	JCD	HA	PW	FMT	QO	VS	GK	XN
G	LMT	HCB	SJN	DG	UW	XFV	YR	OE	KQ	IA
H	NBQA	GYD	PWS	VR	XK	UIH	EJ	OL	MT	FC
I	BDCT	LGV	JQA	XN	MP	EYS	RF	HO	KU	IW
J	GPKW	TBH	UQY	AE	SJ	XIL	VO	DC	FR	NM
K	ODQV	NEX	GLJ	MR	PC	WHS	YU	BK	FI	TA
L	LVJI	NMP	SXK	GU	WQ	EFH	CR	YO	BT	DA
M	MCNJ	QAX	YFD	UV	EG	PHL	TS	BW	OK	IR
N	WVCF	ITL	EPG	UN	QD	XAS	KY	BO	RM	JH
O	VHNE	TXO	KQW	PA	SG	LIR	BY	DM	UJ	CF
P	UTIX	BHC	RNW	FM	YE	QKV	OS	PL	GJ	AD
Q	MSAG	HIC	QFY	RU	LN	VED	WO	KP	XJ	BT
R	YPIO	CEL	KNA	JH	QD	FUV	WB	TM	SG	XR
S	UDVG	FIB	NRH	KA	QW	XCT	LO	PS	EY	MJ
T	YSHJ	KAD	OIE	LN	MP	QTF	XV	CB	WU	RG
U	BKLV	CPI	HAY	QJ	WE	GMO	UF	RN	DT	XS
V	VHET	FGR	MXI	BY	AQ	LCP	KD	SW	JO	NU
W	SOIP	YTR	NEX	KV	GB	CWA	DQ	MF	JU	LH
X	PSJY	UEW	QAX	IB	NV	GMK	FH	RL	CD	TO
Y	AJNR	QIH	DEF	KM	YL	CGS	TP	BO	UV	XW

NAVAIDS

Id	Name	Channel	Position	Elevation
DAN	Incirlik	21	N37 00.950 E035 26.883	243
AKR	Akrotiri	107	N34 34.765 E032 57.769	147
PHA	Paphos	79	N34 42.997 E032 28.963	35
RMD	Ramat David	84	N32 39.892 E035 11.265	136
OS66	Kuweires Military Aviation Institute	36	N36 11.362 E037 34.226	1200

**FOR DCS
 USE ONLY**



ATIS	AKROTIRI GND	AKROTIRI TWR	OVERLORD CONTROL	TACAN	FIELD ELEVATION
288.20 MHz	240.10 122.10	339.85 130.075	377.8	AKR 107X	75 [ft] 23 [m]

ATIS
 288.20
AKROTIRI GROUND
 240.10
AKROTIRI TOWER
 339.85
OVERLORD
 377.80

NOT FOR CIVIL USE

CAUTION: If unable to comply
 with restrictions advise ATC
 prior to departure.



ARR / DEP ROUTE DESCRIPTION

STRAIGHT-IN RWY28

Pass ENTRY at 5.000' MSL or below, pass INITIAL at 1.500' MSL or below.

OVERHEAD BREAK RWY28

Pass ENTRY at 5.000' MSL or below, pass INITIAL at 2.000' MSL, break to the south.

DEPARTURE GENERAL

Pass Departure end of runway at 1.000' or below.

DEP RWY28 PAPA: Fly straight ahead to exit.

DEP RWY28 LAKE: Fly straight ahead until coast, than right turn direct exit.

DEP RWY28 SIERRA: Fly straight ahead until coastline, then climbing left turn, intercept AKR R-180 to exit.

DEP ECHO: no exit.

ATIS
288.20
AKROTIRI GROUND
240.10
AKROTIRI TOWER
339.85
OVERLORD
377.80

NOT FOR CIVIL USE

CAUTION: If unable to comply with restrictions advise ATC prior to departure.



ARR / DEP ROUTE DESCRIPTION

STRAIGHT-IN RWY28

Pass ENTRY at 5.000' MSL or below, pass INITIAL at 1.500' MSL or below.

OVERHEAD BREAK RWY28

Pass ENTRY at 5.000' MSL or below, pass INITIAL at 2.000' MSL, break to the south.

DEPARTURE GENERAL

Pass Departure end of runway at 1.000' or below.

DEP RWY28 PAPA: Fly straight ahead to exit.

DEP RWY28 LAKE: Fly straight ahead until coast, than right turn direct exit.

DEP RWY28 SIERRA: Fly straight ahead until coastline, then climbing left turn, intercept AKR R-180 to exit.

DEP ECHO: no exit.

ATIS
377.475 (#8)

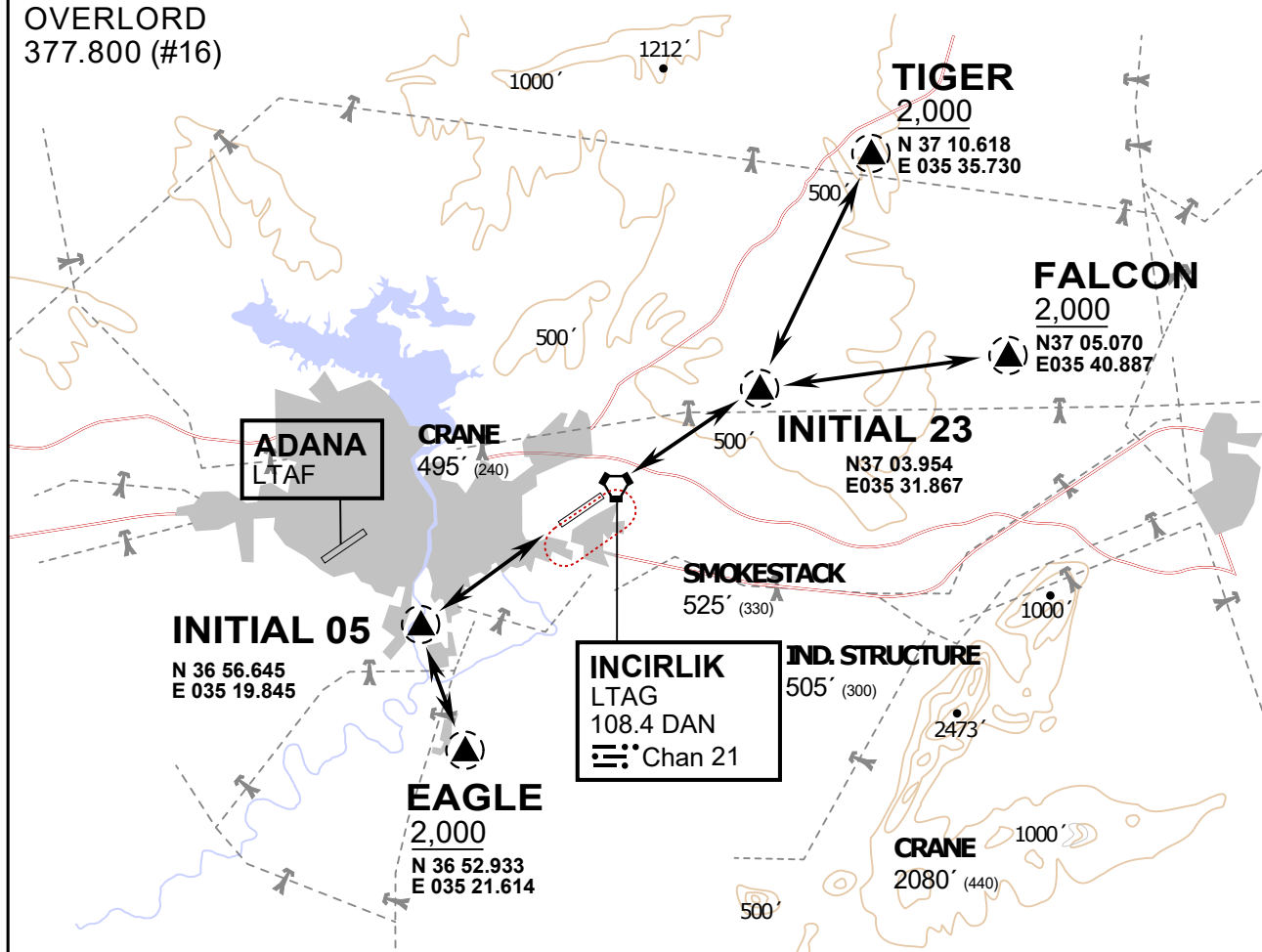
INCIRLIK GROUND
371.3500 (#7)

INCIRLIK TOWER
360.100 (#6)

OVERLORD
377.800 (#16)

NOT FOR CIVIL USE

CAUTION: If unable to comply
with restrictions advise ATC
prior to departure.



vJaBoG32 ETTR NAV CHART



ARR / DEP ROUTE DESCRIPTION

STRAIGHT-IN RWY 05 / 23

Pass entry EAGLE / TIGER / FALCON at 2000' and INITIAL at 1500'

OVERHEAD BREAK RWY 05 / 23

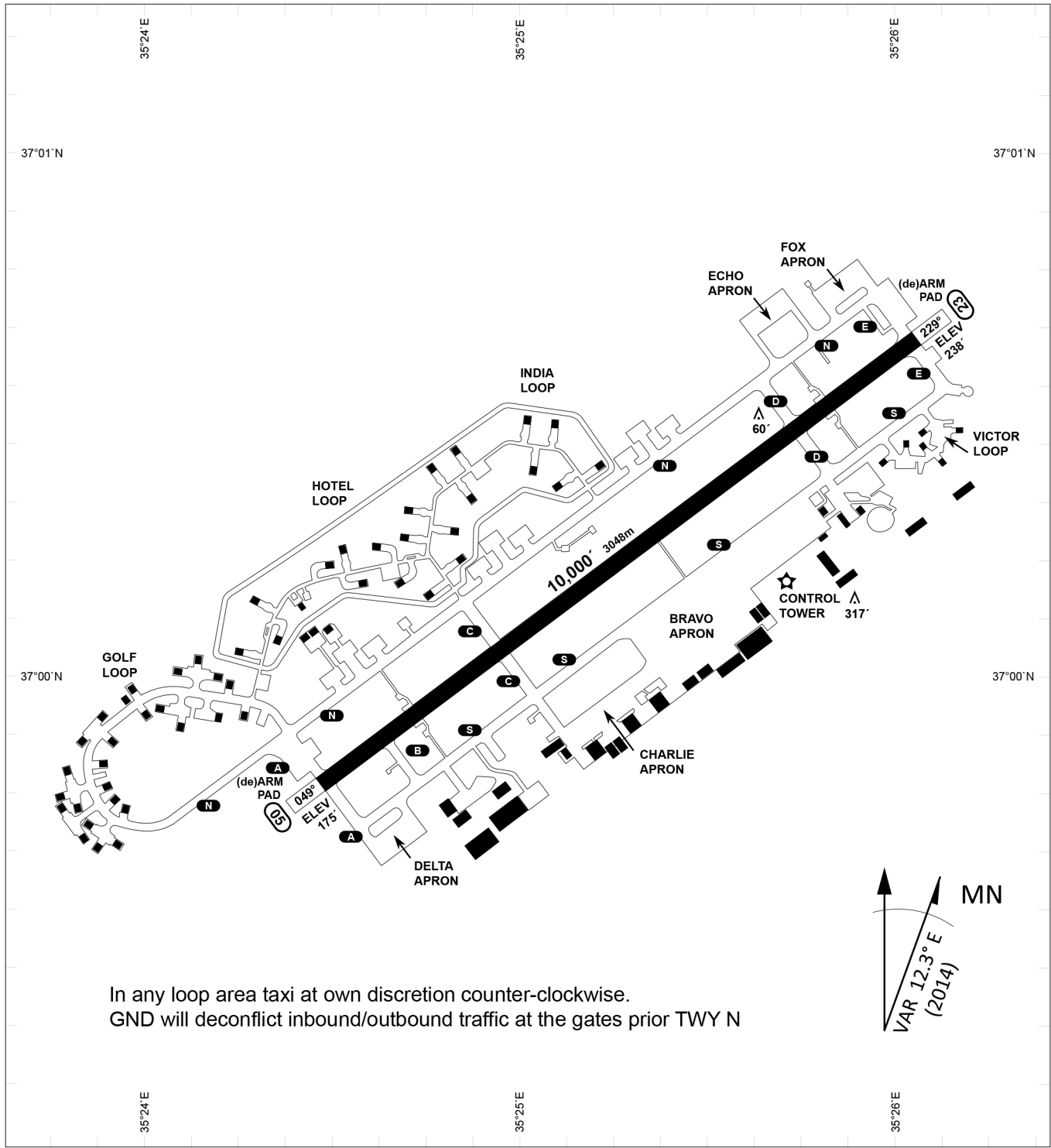
Pass entry EAGLE / TIGER / FALCON at 2500',
pass INITIAL at 2000' break to the south at 2000' pattern altitude.

HELICOPTER ROUTES

Pass entry EAGLE / TIGER / FALCON at 1000' or below, pass INITIAL at 1000' break to the south at 1000' pattern altitude.

DEPARTURE ALL DIRECTIONS

pass DER below 1500ft



In any loop area taxi at own discretion counter-clockwise.
 GND will deconflict inbound/outbound traffic at the gates prior TWY N

PAR	RWY	CAT	MINIMA	ARP	ELEV	Scale 1:35'500 0 300 600 900 1200 1500 [m] 0 1000 2000 3000 4000 5000 [ft]
	21L	A B D E	2057 - 0.8 200 (200-0.8/1.6) GS 3°	37°0'56.000" N	1857 [ft]	
SRA	21R	A C D E	2257 - 1.2 350 (350-1.2/1.6)	35°26'53.000" E	566 [m]	
	3L	A C D E	2257 - 1.2 350 (350-1.2/1.6)			

RWY	TORA	TORA from D	TORA from B	COURSE	PSN THR	ALS
23	10,000 [ft] 3048 [m]	8,000 [ft] 2438 [m]		235°	37°00.611'N 035°26.368'E	⊙
05	10,000 [ft] 3048 [m]		9,000 [ft] 2743 [m]	055°	36°59.043'N 035°24.760'E	⊙

ATIS	INCIRLIK GROUND	INCIRLIK TOWER	CONTROL	TACAN	ILS RWY 05	ILS RWY 23
377.475	371.350 123.020	360.100 121.100	337.800	DAN21x	109.3MHz	111.7MHz