

MISSION DATA CARD

OPORD		Callsign		Mission		Date/Time		
1669/2023		T-Rex 2		Training		272005FEB23		
Task	Carpet Bombing						Freq	
AO	CAS Range						132.25	
Departure				Recovery				
RWY28 VFR				RWY28 VFR				
#	Callsign		Pilot		IFF	TCN	LSR	NET
-1	T-Rex 2-1		Florida		1521	21Y	1561	25/01
-2	T-Rex 2-2		addiks		1522	84Y	1562	25/02

LOADOUT

A/A	A9M				GUN	100% CM	
A/G	12xM82, 7M151L				CHF	120	
POD	TGP, A184				FLR	360	
TKS					FUEL	70%	

TOLD

	Takeoff	Target	Joker	Bingo	Land
FUEL	7760				

AIRBASES

	Name	TCN	ATIS	GND	TWR	RWY	Elev	ILS
Dep	Akrotiri AFB	107X	288.2	240.1	339.85	28	62	109.7
Arr	Akrotiri AFB	107X	288.2	240.1	339.85	28	62	109.7

FLIGHTPLAN

#	Name	Navaid/Coords/DME	ALT	TOT
1	LAKE	N34 45.150 E032 55.400	5000	
2	CTR.T1	N35 09.457 E033 16.244		
3	TGT 1	N35 09.396 E033 16.312		
4	TGT 2	N35 08.720 E033 16.878		
5	ECHO	N34 42.600 E033 10	5000	

COMMS

Radio	Usage
1	132.25
2	2 - 4 - 16 - 2 - 4
3	32.25

NOTES

150ft ripl single
5000ft to cover

OTHER FLIGHTS

Callsign	Mission	Airframe	Freq	TCN	Grpld	Laser
Beast 4	Training	4x AH-64D	133.5	21/84		156X
AO	Insurgent Town easy u hard cold. CAS Range		Task			
Tiger 1	Training	4x F/A-18C	261.15	21/84	1	156X
AO	Ercan Airfield		Task	JDAM Training		
Tiger 3	Training	4x F/A-18C	261.35	23/86	1	156X
AO	Ercan Airfield		Task	JDAM Training		
Edelweiss 2	Training	4x F-16C	261.25	21/84		156X
AO			Task			
Monster 1	Training	2x A-10C	132.15	21/84	24	156X
AO	CAS Range		Task	Carpet Bombing		
Edelweiss 3	Training	4x F-16C	134.0	21/84		156X
AO			Task			
Edelweiss 2	Training	2x F/A-18C	264.25	21/84		156X
AO	Akrotiri		Task	System Check		

RADIO CHANNELS

#	Freq	Name
1		Flight/Squadron specific
2	288.2	Akrotiri ATIS
3	240.1	Akrotiri Ground
4	339.85	Aktrotiri Tower
5	335.05	Akrotiri Approach
6	360.1	Incirlik Tower
7	371.35	Incirlik Ground
8	377.475	Incirlik ATIS
9		No Preset
10	127.3	Paphos ATIS
11	353.8	Paphos Tower
12	304.0	CVN-73 George Washington
13	302.0	LHA-1 Tarawa
14	259.0	CV-59 Forrestal
15		No Preset
16	377.8	Overlord
17	265.0	KC-135 Texaco-1 medium/slow
18	319.8	KC-135 Arco-1
19	360.8	KC-135MPRS Arco-2
20	256.0	S-3B Recovery Tanker

RAMROD

0	1	2	3	4	5	6	7	8	9
M	I	S	T	A	K	E	N	L	Y

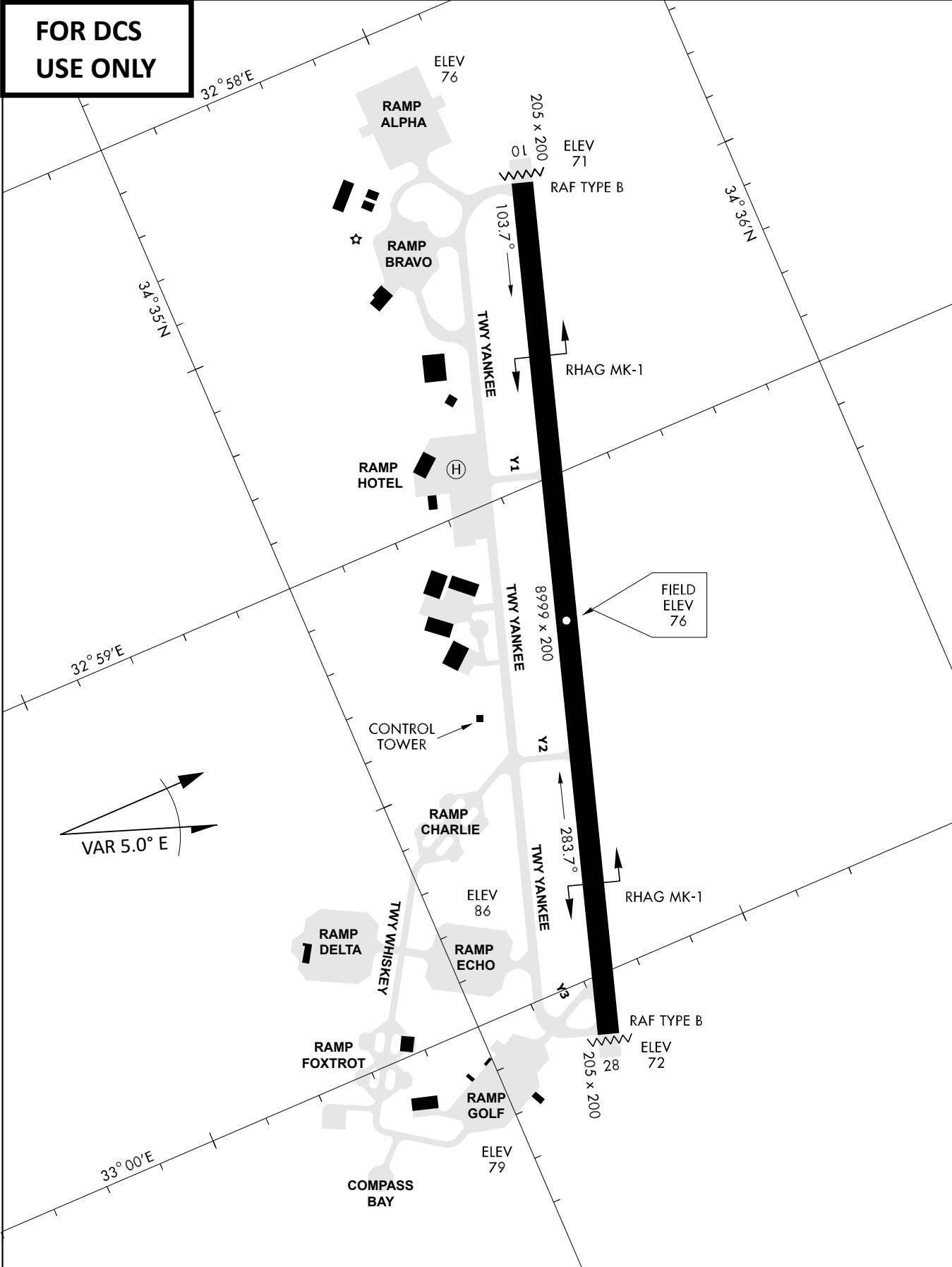
KTC 1400 C

	0	1	2	3	4	5	6	7	8	9
A	NRPI	TSJ	AOL	YD	KV	GEU	MB	XW	HC	QF
B	QWVW	UML	EIS	JX	OG	YBK	DT	CN	HR	AP
C	QBJL	SEC	XND	VO	PY	WKG	FR	MT	UA	HI
D	KSER	QBX	VGT	PC	YH	DLJ	FN	AU	MO	WI
E	VJYN	EOM	UKS	TC	BL	WHF	IA	XR	QP	DG
F	LBIE	YUR	JCD	HA	PW	FMT	QO	VS	GK	XN
G	LMTW	HCB	SJN	DG	UW	XFV	YR	OE	KQ	IA
H	NBQA	GYD	PWS	VR	XK	UIH	EJ	OL	MT	FC
I	BDCT	LGV	JQA	XN	MP	EYS	RF	HO	KU	IW
J	GPKW	TBH	UQY	AE	SJ	XIL	VO	DC	FR	NM
K	ODQV	NEX	GLJ	MR	PC	WHS	YU	BK	FI	TA
L	LVJI	NMP	SXK	GU	WQ	EFH	CR	YO	BT	DA
M	MCNJ	QAX	YFD	UV	EG	PHL	TS	BW	OK	IR
N	WVCF	ITL	EPG	UN	QD	XAS	KY	BO	RM	JH
O	VHNE	TXO	KQW	PA	SG	LIR	BY	DM	UJ	CF
P	UTIX	BHC	RNW	FM	YE	QKV	OS	PL	GJ	AD
Q	MSAG	HIC	QFY	RU	LN	VED	WO	KP	XJ	BT
R	YPIO	CEL	KNA	JH	QD	FUV	WB	TM	SG	XR
S	UDVG	FIB	NRH	KA	QW	XCT	LO	PS	EY	MJ
T	YSHJ	KAD	OIE	LN	MP	QTF	XV	CB	WU	RG
U	BKLV	CPI	HAY	QJ	WE	GMO	UF	RN	DT	XS
V	VHET	FGR	MXI	BY	AQ	LCP	KD	SW	JO	NU
W	SOIP	YTR	NEX	KV	GB	CWA	DQ	MF	JU	LH
X	PSJY	UEW	QAX	IB	NV	GMK	FH	RL	CD	TO
Y	AJNR	QIH	DEF	KM	YL	CGS	TP	BO	UV	XW

NAVAIDS

Id	Name	Channel	Position	Elevation
DAN	Incirlik	21	N37 00.950 E035 26.883	243
AKR	Akrotiri	107	N34 34.765 E032 57.769	147
PHA	Paphos	79	N34 42.997 E032 28.963	35
RMD	Ramat David	84	N32 39.892 E035 11.265	136
OS66	Kuweires Military Aviation Institute	36	N36 11.362 E037 34.226	1200

**FOR DCS
 USE ONLY**

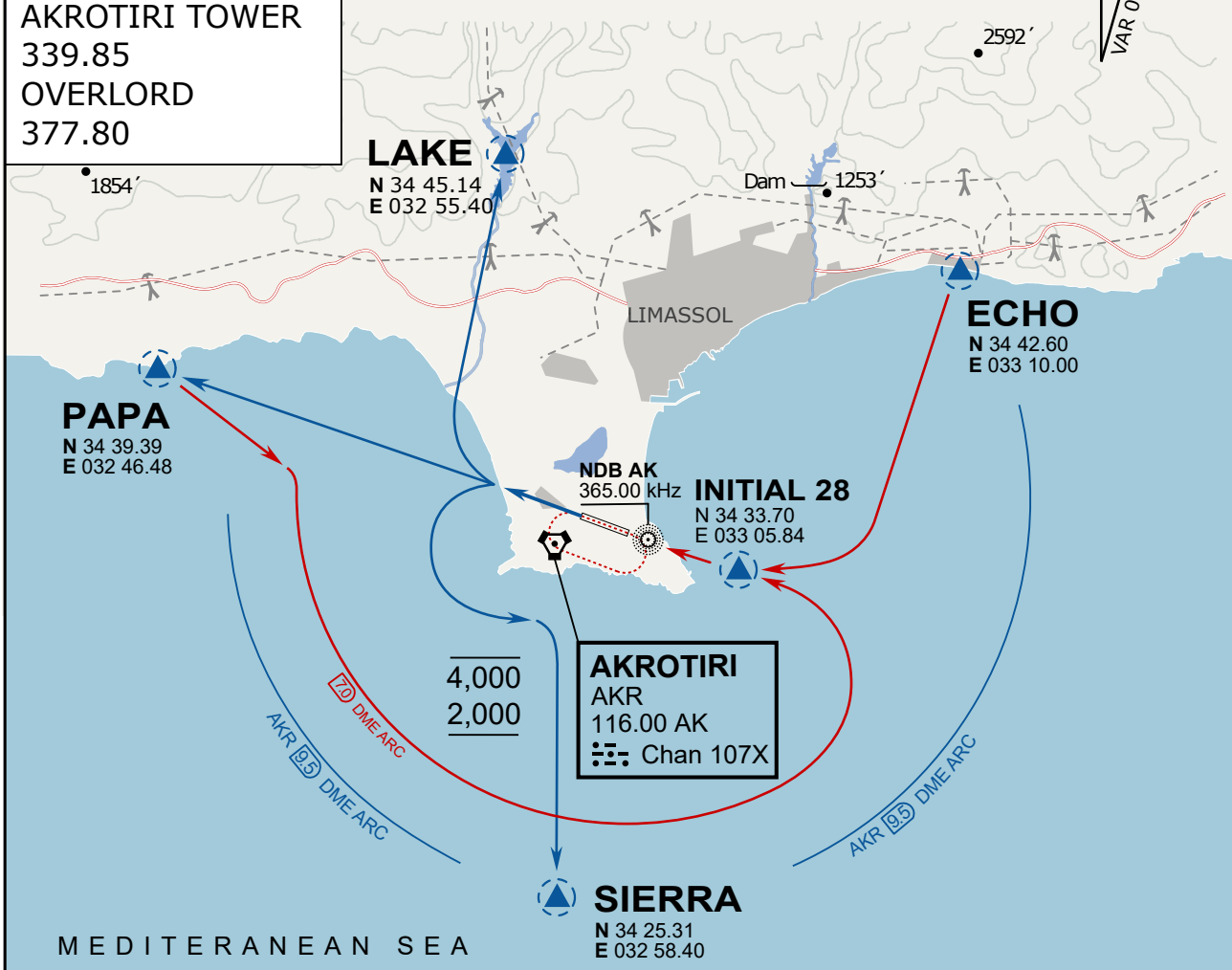


ATIS	AKROTIRI GND	AKROTIRI TWR	OVERLORD CONTROL	TACAN	FIELD ELEVATION
288.20 MHz	240.10 122.10	339.85 130.075	377.8	AKR 107X	75 [ft] 23 [m]

ATIS
 288.20
AKROTIRI GROUND
 240.10
AKROTIRI TOWER
 339.85
OVERLORD
 377.80

NOT FOR CIVIL USE

CAUTION: If unable to comply
 with restrictions advise ATC
 prior to departure.



ARR / DEP ROUTE DESCRIPTION

STRAIGHT-IN RWY28

Pass ENTRY at 5.000' MSL or below, pass INITIAL at 1.500' MSL or below.

OVERHEAD BREAK RWY28

Pass ENTRY at 5.000' MSL or below, pass INITIAL at 2.000' MSL, break to the south.

DEPARTURE GENERAL

Pass Departure end of runway at 1.000' or below.

DEP RWY28 PAPA: Fly straight ahead to exit.

DEP RWY28 LAKE: Fly straight ahead until coast, than right turn direct exit.

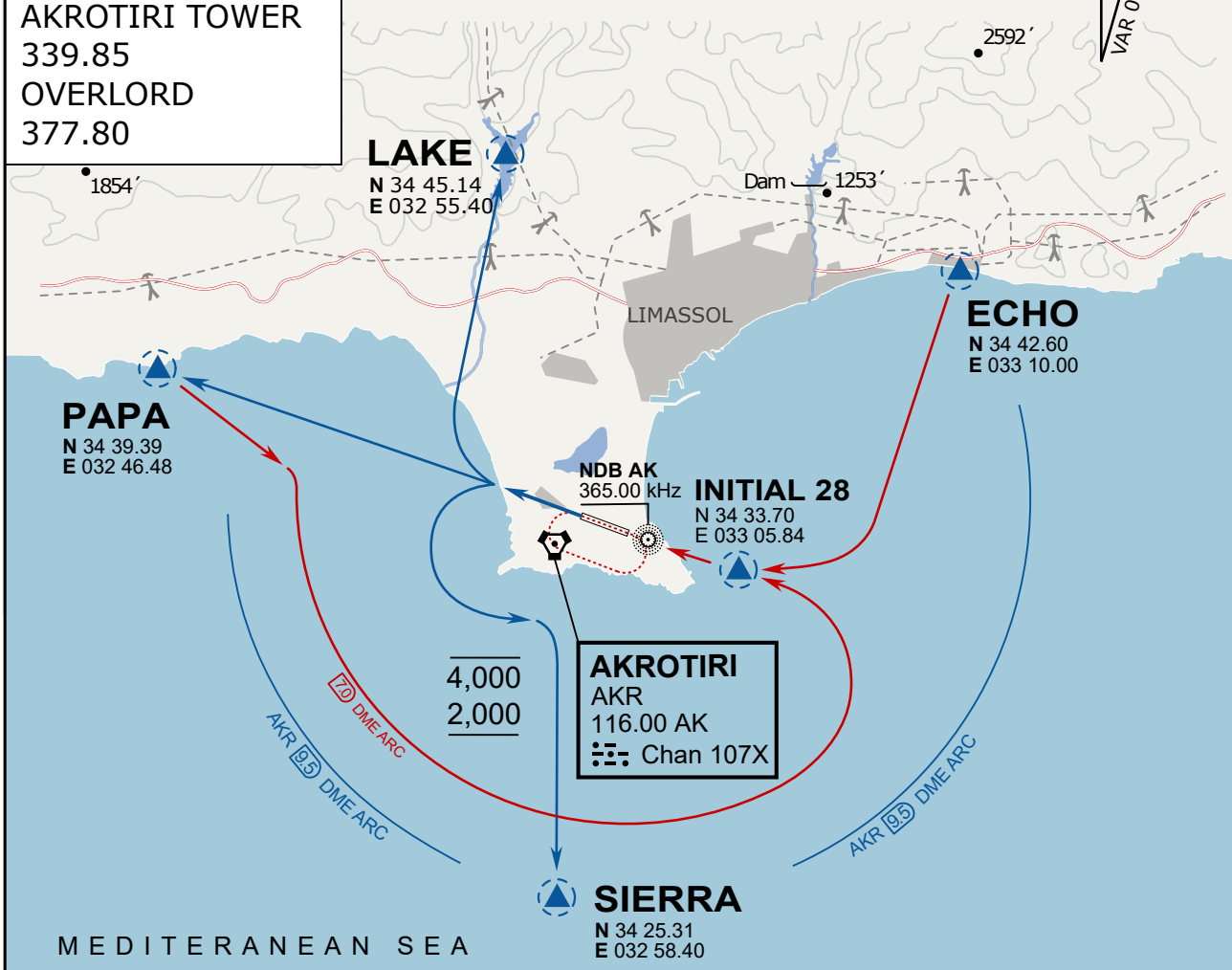
DEP RWY28 SIERRA: Fly straight ahead until coastline, then climbing left turn, intercept AKR R-180 to exit.

DEP ECHO: no exit.

ATIS
 288.20
AKROTIRI GROUND
 240.10
AKROTIRI TOWER
 339.85
OVERLORD
 377.80

NOT FOR CIVIL USE

CAUTION: If unable to comply
 with restrictions advise ATC
 prior to departure.



ARR / DEP ROUTE DESCRIPTION

STRAIGHT-IN RWY28

Pass ENTRY at 5.000' MSL or below, pass INITIAL at 1.500' MSL or below.

OVERHEAD BREAK RWY28

Pass ENTRY at 5.000' MSL or below, pass INITIAL at 2.000' MSL, break to the south.

DEPARTURE GENERAL

Pass Departure end of runway at 1.000' or below.

DEP RWY28 PAPA: Fly straight ahead to exit.

DEP RWY28 LAKE: Fly straight ahead until coast, than right turn direct exit.

DEP RWY28 SIERRA: Fly straight ahead until coastline, then climbing left turn, intercept AKR R-180 to exit.

DEP ECHO: no exit.