

MISSION DATA CARD

OPORD		Callsign		Mission		Date/Time		
1663/2023		Edelweiss 7		Training		261330FEB23		
Task	DEAD/SEAD					Freq		
AO						134.5		
Departure				Recovery				
RWY28 VFR				RWY28 VFR				
#	Callsign		Pilot		IFF	TCN	LSR	NET
-1	Edelweiss 7-1		Void		1511	21Y	1561	

LOADOUT

A/A	2xA120C, 2xA9X				GUN	100% HEI-T	
A/G	A88C, 3xC97, 3xC87, 3xA65D				CHF	60	
POD	HTS, A184, TGP				FLR	60	
TKS					FUEL	100%	

TOLD

	Takeoff	Target	Joker	Bingo	Land		
FUEL	7163	6000	4000	2000	1000		

AIRBASES

	Name	TCN	ATIS	GND	TWR	RWY	Elev	ILS
Dep	Akrotiri AFB	107X	288.2	240.1	339.85	28	62	109.7
Arr	Akrotiri AFB	107X	288.2	240.1	339.85	28	62	109.7
Div	Paphos Internationl	79X	127.3		353.8	29	40	108.9

FLIGHTPLAN

#	Name	Navaid/Coords/DME	ALT	TOT
1	Lake >5500	N34 45 08.400 E032 55 24	5501	
2	SA-10	N35 20.667 E033 17.644	38	
3	SA-2	N35 30.669 E034 14.634	213	
4	Echo	N34 42.600 E033 10	5000	
5	Initial 28	N34 33.700 E033 05.840	1500	

COMMS

Radio	Usage
1	288.2
2	339.85
3	377.8

NOTES

ATIS 288.2

TWR 339.85

Overlord 377.8

4 SA-10

5 SA-2

SUPPORT**Tanker**

Callsign	TCN	Freq	ALT	TAS
SHELL 3	93Y	278.75	FL170	215
	Pos	SHELL3: (N3436 E03419)		

AWACS

Callsign	Freq	ALT	Pos
OVERLORD2	377.8	FL320	N3713 E03643 - N3714 E03749

OTHER FLIGHTS

Callsign	Mission	Airframe	Freq	TCN	Grpld	Laser
Edelweiss 2	Training	3x F-16C	134.0	21/84	1	175X
AO		Task				

RADIO CHANNELS

#	Freq	Name
1		Flight/Squadron specific
2	288.2	Akrotiri ATIS
3	240.1	Akrotiri Ground
4	339.85	Aktrotiri Tower
5	335.05	Akrotiri Approach
6	360.1	Incirlik Tower
7	371.35	Incirlik Ground
8	377.475	Incirlik ATIS
9		No Preset
10	127.3	Paphos ATIS
11	353.8	Paphos Tower
12	304.0	CVN-73 George Washington
13	302.0	LHA-1 Tarawa
14	259.0	CV-59 Forrestal
15		No Preset
16	377.8	Overlord
17	265.0	KC-135 Texaco-1 medium/slow
18	319.8	KC-135 Arco-1
19	360.8	KC-135MPRS Arco-2
20	256.0	S-3B Recovery Tanker

RAMROD

0	1	2	3	4	5	6	7	8	9
P	A	D	L	O	C	K	I	N	G

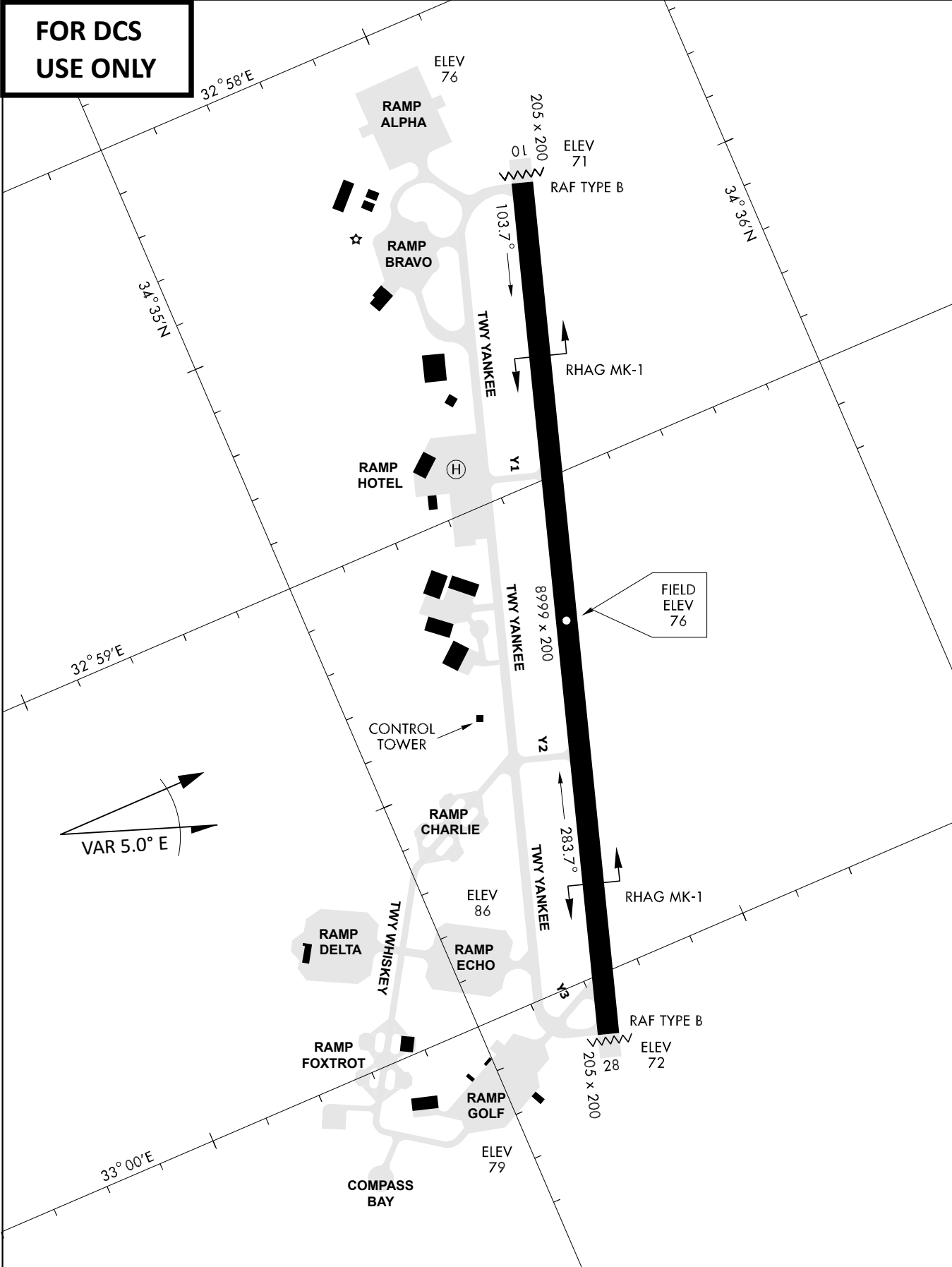
KTC 1400 C

	0	1	2	3	4	5	6	7	8	9
A	DYGC	MIJ	KRE	WS	PA	ONL	UT	FV	HQ	XB
B	ASYV	NMW	TQO	HG	RI	CUD	KE	FX	JB	LP
C	REQX	UTK	DPN	CB	FJ	MSI	AH	OV	WG	YL
D	WJRG	LIM	QSA	NH	VO	KTC	FP	BX	YU	ED
E	QLTI	BVO	DFW	KJ	XS	YRN	CA	EU	PG	MH
F	RNTK	QFD	AEU	GL	MY	OSP	HC	VX	BW	JI
G	MGVI	TAU	NPH	RE	LK	QXJ	FY	OB	DC	SW
H	GSFQ	WYP	RAK	DV	XC	HIM	OJ	BN	TE	LU
I	TLSF	HGK	QCI	EW	JU	DXA	YM	BN	VO	RP
J	WXTV	FDK	LYJ	SE	UN	BIC	GO	QP	AH	MR
K	DVJR	XNE	YPH	LB	AU	CGM	OS	FQ	KW	IT
L	KUQD	GWH	XOY	AF	RJ	CPI	BM	VN	SL	TE
M	IKWB	PTV	JRN	SM	UL	GYO	CX	QA	HF	ED
N	IOUA	PBL	NTD	HK	RY	MSW	XV	GE	FJ	CQ
O	JHQS	AER	TFV	YU	XK	COD	NP	IB	GL	WM
P	QWYR	TSL	EHB	DP	UC	FJO	IG	KX	NM	AV
Q	FEHJ	OTM	WPB	YR	QS	KAG	VX	DC	UL	IN
R	GDKP	BVA	XTQ	RM	JO	ECL	IS	UH	NY	FW
S	YADT	KQR	MXO	EP	IB	SNC	LG	FV	HU	JW
T	UIGN	QJW	PRV	KC	YB	TFH	MD	XO	EL	SA
U	JIXN	EPK	YWD	VR	BH	TLM	UF	OC	GS	AQ
V	SQUL	BDP	VIX	JG	AY	MKR	OF	HT	WE	NC
W	HGYQ	FSD	UJL	OK	WP	XNE	BR	MA	IC	TV
X	CUNT	XHM	GJS	VE	QD	KPB	LF	YA	RO	IW
Y	WSDE	CRH	JQU	KA	FM	YNO	BI	GT	XP	LV

NAVAIDS

Id	Name	Channel	Position	Elevation
DAN	Incirlik	21	N37 00.950 E035 26.883	243
AKR	Akrotiri	107	N34 34.765 E032 57.769	147
PHA	Paphos	79	N34 42.997 E032 28.963	35
RMD	Ramat David	84	N32 39.892 E035 11.265	136
OS66	Kuweires Military Aviation Institute	36	N36 11.362 E037 34.226	1200

**FOR DCS
 USE ONLY**

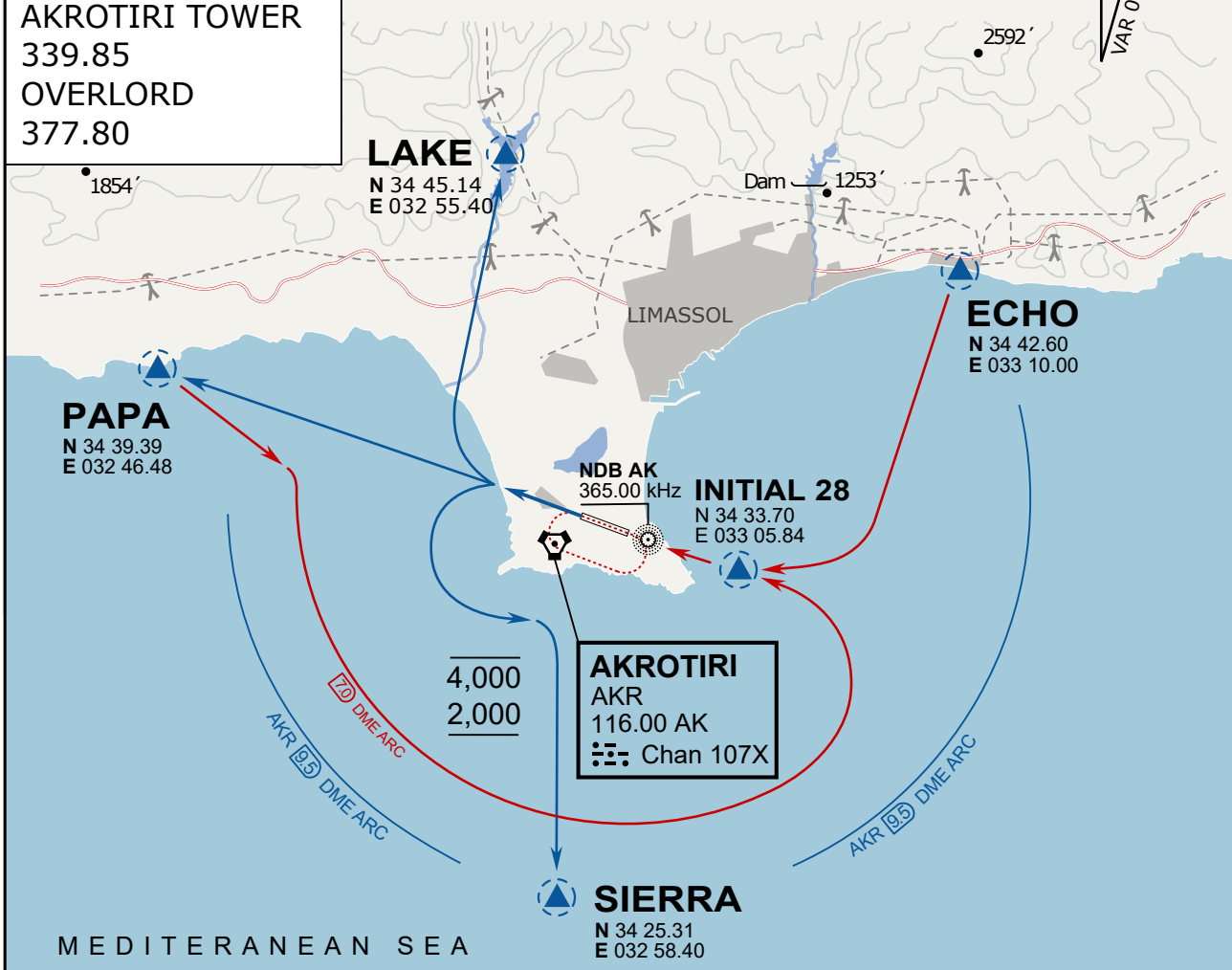


ATIS	AKROTIRI GND	AKROTIRI TWR	OVERLORD CONTROL	TACAN	FIELD ELEVATION
288.20 MHz	240.10 122.10	339.85 130.075	377.8	AKR 107X	75 [ft] 23 [m]

ATIS
 288.20
AKROTIRI GROUND
 240.10
AKROTIRI TOWER
 339.85
OVERLORD
 377.80

NOT FOR CIVIL USE

CAUTION: If unable to comply
 with restrictions advise ATC
 prior to departure.



ARR / DEP ROUTE DESCRIPTION

STRAIGHT-IN RWY28

Pass ENTRY at 5.000' MSL or below, pass INITIAL at 1.500' MSL or below.

OVERHEAD BREAK RWY28

Pass ENTRY at 5.000' MSL or below, pass INITIAL at 2.000' MSL, break to the south.

DEPARTURE GENERAL

Pass Departure end of runway at 1.000' or below.

DEP RWY28 PAPA: Fly straight ahead to exit.

DEP RWY28 LAKE: Fly straight ahead until coast, than right turn direct exit.

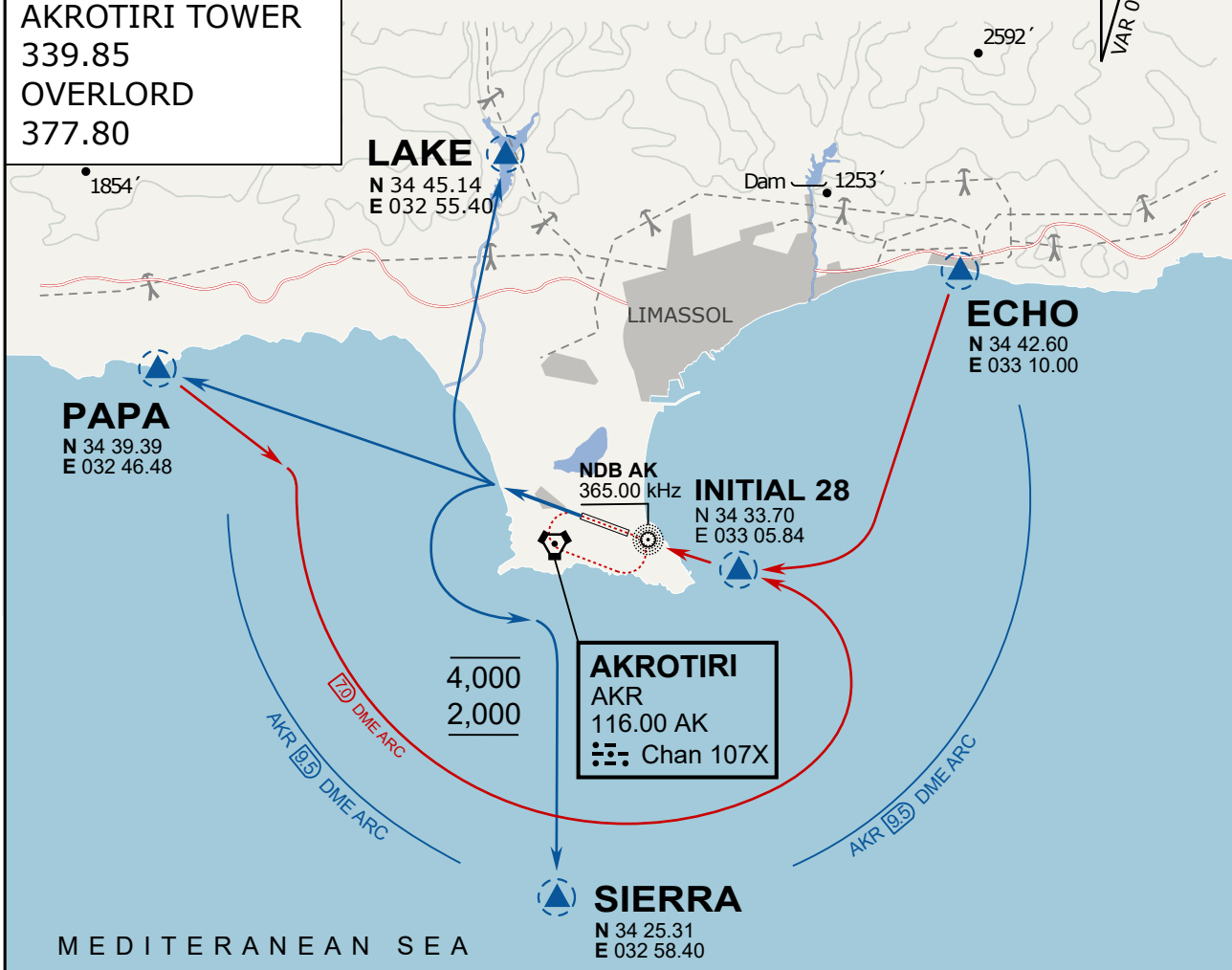
DEP RWY28 SIERRA: Fly straight ahead until coastline, then climbing left turn, intercept AKR R-180 to exit.

DEP ECHO: no exit.

ATIS
 288.20
AKROTIRI GROUND
 240.10
AKROTIRI TOWER
 339.85
OVERLORD
 377.80

NOT FOR CIVIL USE

CAUTION: If unable to comply
 with restrictions advise ATC
 prior to departure.



ARR / DEP ROUTE DESCRIPTION

STRAIGHT-IN RWY28

Pass ENTRY at 5.000' MSL or below, pass INITIAL at 1.500' MSL or below.

OVERHEAD BREAK RWY28

Pass ENTRY at 5.000' MSL or below, pass INITIAL at 2.000' MSL, break to the south.

DEPARTURE GENERAL

Pass Departure end of runway at 1.000' or below.

DEP RWY28 PAPA: Fly straight ahead to exit.

DEP RWY28 LAKE: Fly straight ahead until coast, than right turn direct exit.

DEP RWY28 SIERRA: Fly straight ahead until coastline, then climbing left turn, intercept AKR R-180 to exit.

DEP ECHO: no exit.

NOT AVAILABLE

NOT AVAILABLE