

MISSION DATA CARD

OPORD	Callsign	Mission	Date/Time			
1646/2023	Edelweiss 1	Training	222045FEB23			
Task						Freq
AO	AAR / Formation Training					134.0
Departure			Recovery			
RWY28 VFR			RWY10 VFR			
#	Callsign	Pilot	IFF	TCN	LSR	NET
-1	Edelweiss 1-1	Woodman	1711	21Y	1561	
-2	Edelweiss 1-2	Newbie	1712	84Y	1562	

LOADOUT

A/A	2xA120C, 2xA9M	GUN	100% HEI-T
A/G	2xM82	CHF	60
POD		FLR	60
TKS	3xFT300	FUEL	100%

TOLD

	Takeoff	Target	Joker	Bingo	Land
FUEL	13172			3000	1200

AIRBASES

	Name	TCN	ATIS	GND	TWR	RWY	Elev	ILS
Dep	Akrotiri AFB	107X	288.2	240.1	339.85	28	62	109.7
Arr	Akrotiri AFB	107X	288.2	240.1	339.85	28	62	109.7
Div	Paphos Internationl	79X	127.3		353.8	29	40	108.9

FLIGHTPLAN

#	Name	Navaid/Coords/DME	ALT	TOT
1	ECHO	N34 42.600 E033 10	1000	
2	INITIAL 28	N34 33.700 E033 05.840	1500	
3	PAPA	N34 39.390 E032 46.480	1000	
4	INITIAL 10	N34 37.150 E032 52.670	2000	
5	SIERRA	N34 25.310 E032 58.400	3000	

SUPPORT**Tanker**

Callsign	TCN	Freq	ALT	TAS
ARCO 1	22Y	319.8	FL222	400
Pos	ARCO1: (N3701 E03457)			

RADIO CHANNELS

#	Freq	Name
1		Flight/Squadron specific
2	288.2	Akrotiri ATIS
3	240.1	Akrotiri Ground
4	339.85	Aktrotiri Tower
5	335.05	Akrotiri Approach
6	360.1	Incirlik Tower
7	371.35	Incirlik Ground
8	377.475	Incirlik ATIS
9		No Preset
10	127.3	Paphos ATIS
11	353.8	Paphos Tower
12	304.0	CVN-73 George Washington
13	302.0	LHA-1 Tarawa
14	259.0	CV-59 Forrestal
15		No Preset
16	377.8	Overlord
17	265.0	KC-135 Texaco-1 medium/slow
18	319.8	KC-135 Arco-1
19	360.8	KC-135MPRS Arco-2
20	256.0	S-3B Recovery Tanker

RAMROD

0	1	2	3	4	5	6	7	8	9
A	F	T	E	R	G	L	O	W	S

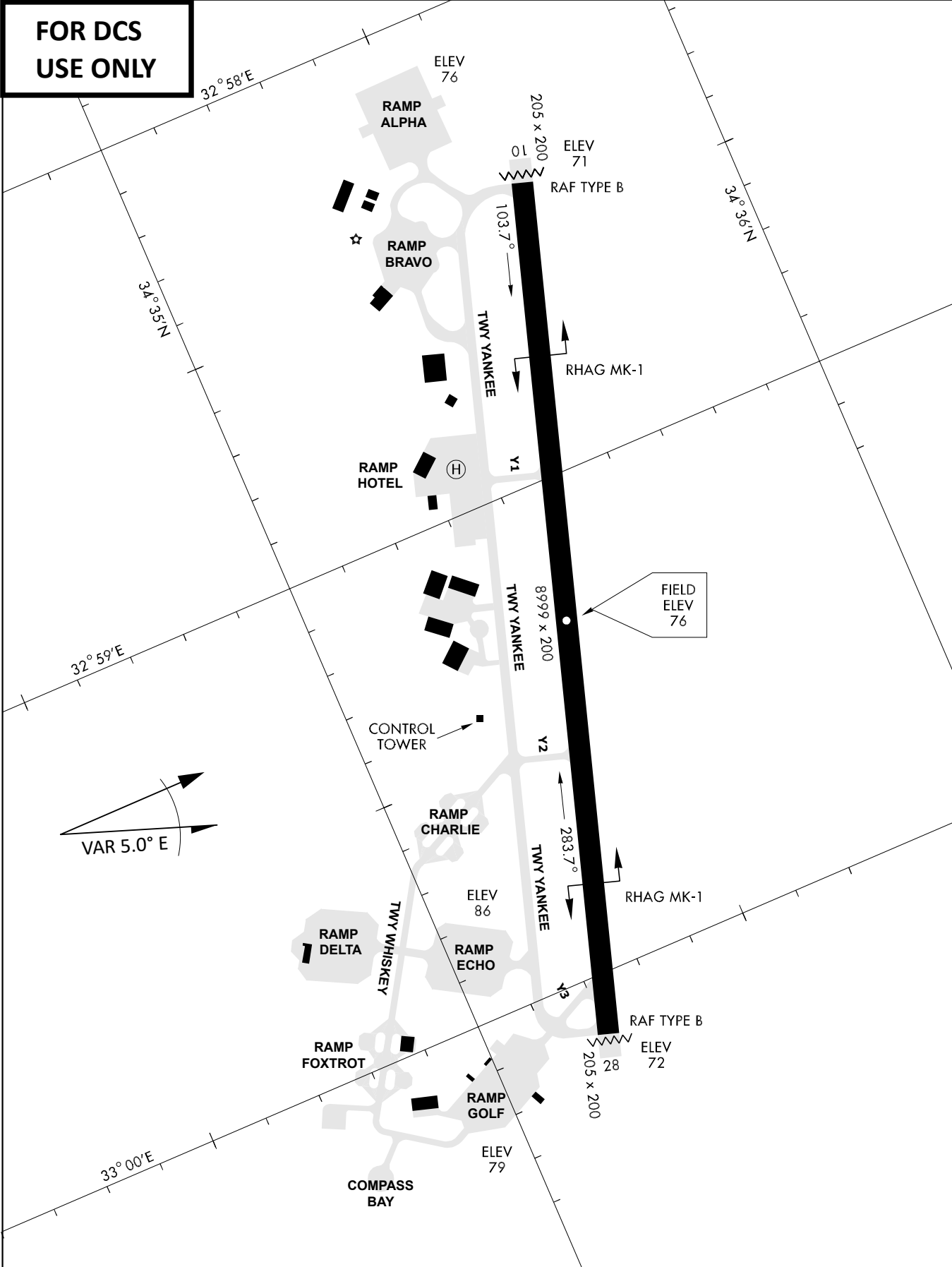
KTC 1400 C

	0	1	2	3	4	5	6	7	8	9
A	KFGO	QJI	XVN	AP	UY	BLT	CM	RH	EW	SD
B	DYRI	JTB	NGP	FM	LV	WEA	HO	XS	QC	UK
C	TGWB	OJX	SQE	AC	RY	MPK	DN	UL	FH	VI
D	YRTB	FMK	XUN	GW	SO	JAE	CD	PL	VQ	HI
E	GAMF	QOI	VXD	KS	TB	WHR	CN	UJ	EP	LY
F	NMKU	HCA	WFX	QV	OP	BYR	ES	IG	DT	LJ
G	PSQG	DXK	NHR	CL	MU	TEY	JV	OW	FI	AB
H	WJEX	PBN	LTM	FY	HC	RKS	QG	IU	DA	VO
I	NDTA	EOJ	MSV	CI	QX	GUR	KY	FH	LP	BW
J	MUXB	PSW	VHI	EO	QR	GJA	KD	NL	CY	FT
K	KUWV	YHJ	XAD	LE	CG	IQM	NR	TB	FS	OP
L	EOXD	QFY	NRA	UH	KI	GJL	BM	TS	WC	VP
M	GLQU	IWO	RTK	CD	VX	AJP	MF	SE	YH	BN
N	AUYM	GWN	JKH	CP	OR	FSE	QV	LI	XB	TD
O	BKHW	VTY	CJQ	AS	NL	XOD	FM	UG	PI	ER
P	YXBS	IWK	RFA	DJ	CN	PVG	TU	QO	ME	LH
Q	XDSB	VFK	GUI	AP	WQ	MER	NJ	LO	CH	YT
R	LTFM	PGI	EQH	KW	AX	YVO	CB	NJ	UD	SR
S	FQCN	RXH	GBO	UD	PM	JAV	IE	WS	LY	TK
T	JWUY	LSB	AKI	TE	FV	NQG	MP	CD	RO	XH
U	BVPE	HRF	UKA	JQ	ST	NMW	GL	CI	XY	OD
V	UTCV	HDP	OSL	QY	EM	NFK	RX	AI	GJ	BW
W	EKQO	JRP	CXL	NT	VY	GAS	UB	MF	HI	DW
X	CLNJ	PAT	XRF	QH	SU	OWM	IG	EB	VK	DY
Y	HPWR	BDA	QYK	OG	VI	FXU	MN	ST	EJ	LC

NAVAIDS

Id	Name	Channel	Position	Elevation
DAN	Incirlik	21	N37 00.950 E035 26.883	243
AKR	Akrotiri	107	N34 34.765 E032 57.769	147
PHA	Paphos	79	N34 42.997 E032 28.963	35
RMD	Ramat David	84	N32 39.892 E035 11.265	136
OS66	Kuweires Military Aviation Institute	36	N36 11.362 E037 34.226	1200

**FOR DCS
 USE ONLY**

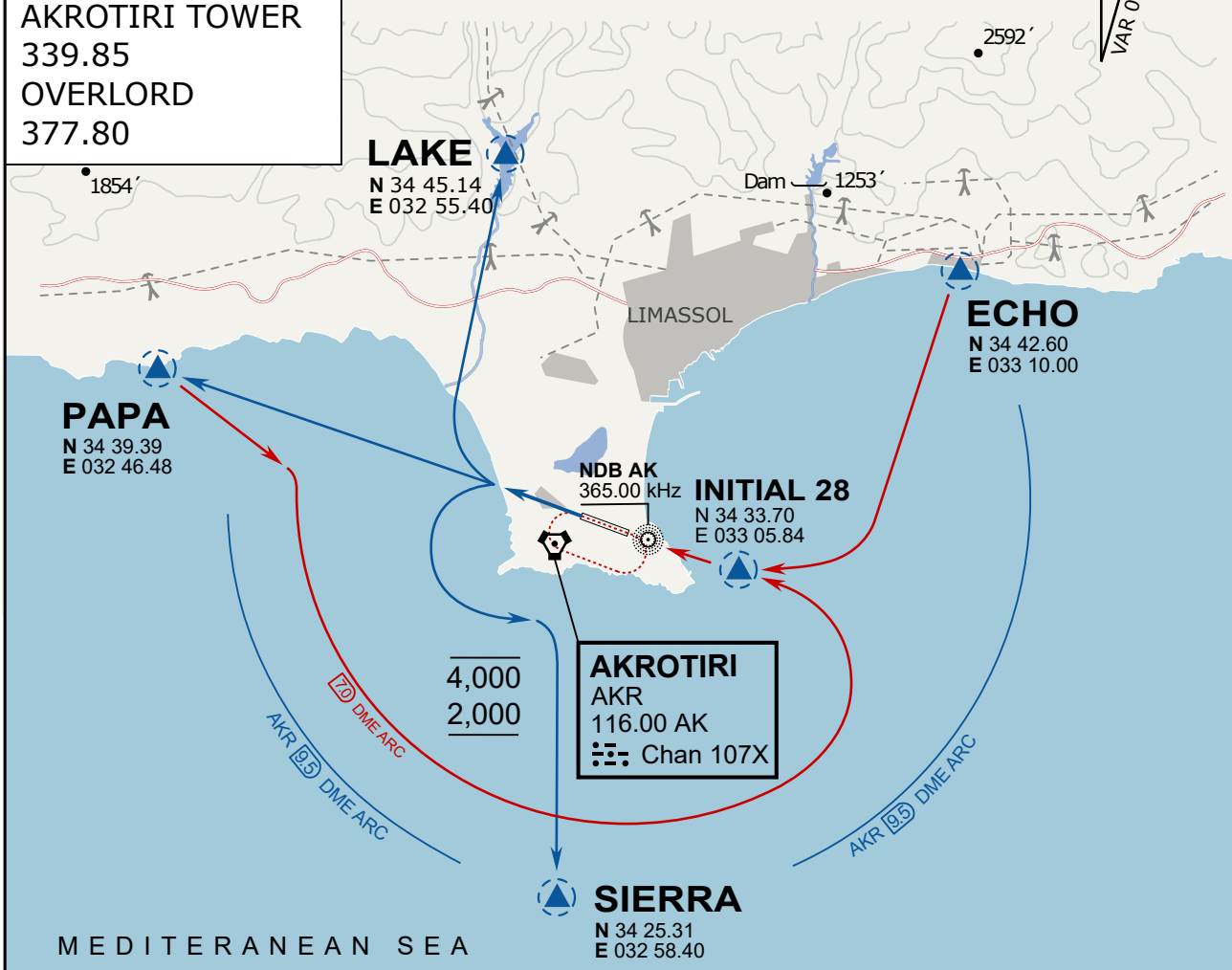


ATIS	AKROTIRI GND	AKROTIRI TWR	OVERLORD CONTROL	TACAN	FIELD ELEVATION
288.20 MHz	240.10 122.10	339.85 130.075	377.8	AKR 107X	75 [ft] 23 [m]

ATIS
 288.20
AKROTIRI GROUND
 240.10
AKROTIRI TOWER
 339.85
OVERLORD
 377.80

NOT FOR CIVIL USE

CAUTION: If unable to comply
 with restrictions advise ATC
 prior to departure.



ARR / DEP ROUTE DESCRIPTION

STRAIGHT-IN RWY28

Pass ENTRY at 5.000' MSL or below, pass INITIAL at 1.500' MSL or below.

OVERHEAD BREAK RWY28

Pass ENTRY at 5.000' MSL or below, pass INITIAL at 2.000' MSL, break to the south.

DEPARTURE GENERAL

Pass Departure end of runway at 1.000' or below.

DEP RWY28 PAPA: Fly straight ahead to exit.

DEP RWY28 LAKE: Fly straight ahead until coast, than right turn direct exit.

DEP RWY28 SIERRA: Fly straight ahead until coastline, then climbing left turn, intercept AKR R-180 to exit.

DEP ECHO: no exit.

ATIS

288.20

AKROTIRI GROUND

240.10

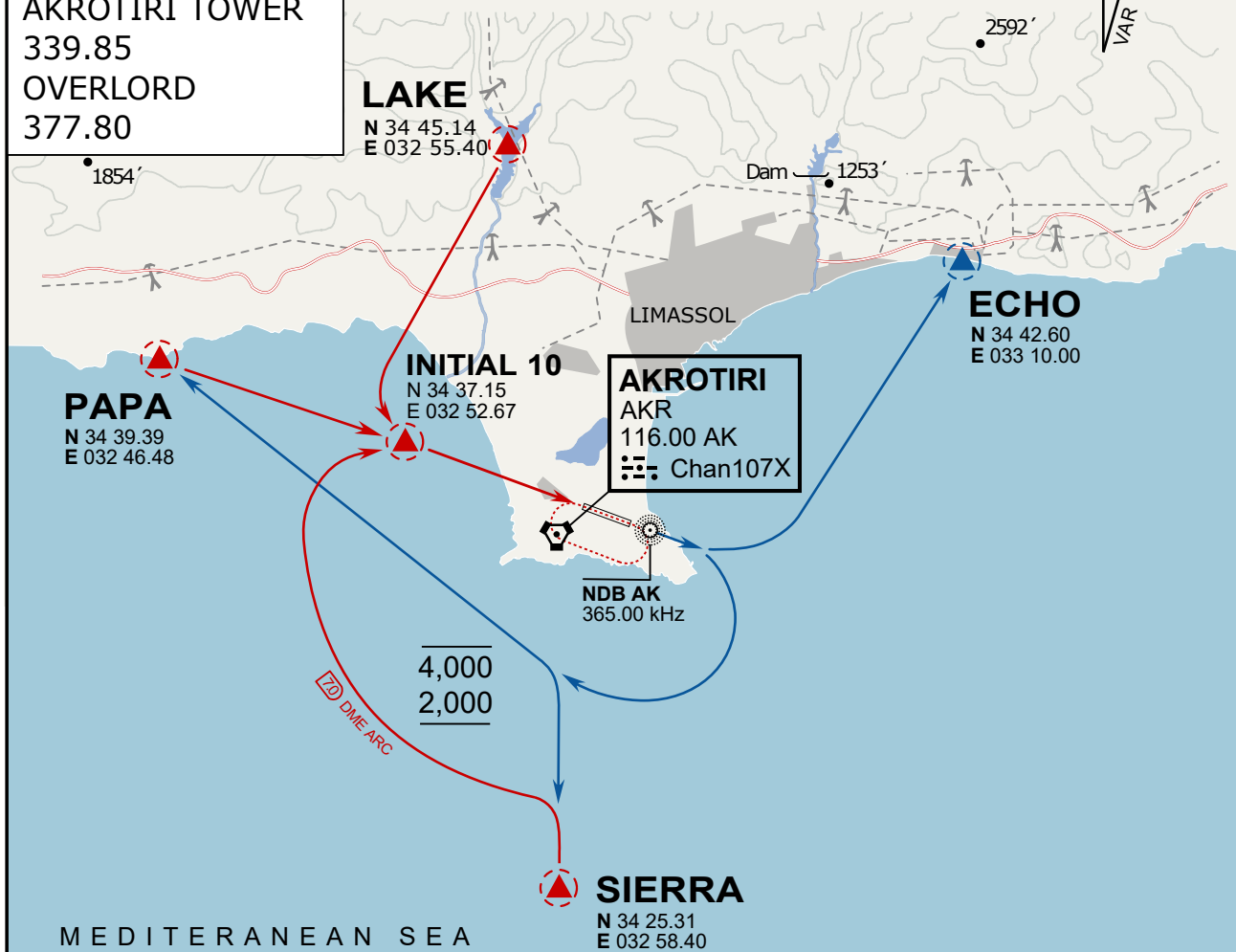
AKROTIRI TOWER

339.85

OVERLORD

377.80

NOT FOR CIVIL USE

CAUTION: If unable to comply
with restrictions advise ATC
prior to departure.

ARR / DEP ROUTE DESCRIPTION

ARRIVAL GENERAL

Pass Entry at 5.000' or below. Overhead Brake RWY 10: pass INITIAL 10 at 2.000' MSL.
Straight-in RWY 10 : pass INITIAL 1.500' or below.

ARR RWY10 PAPA / LAKE: Direct initial.

ARR RWY10 SIERRA: Intercept ARC 7 of AKR to INITIAL 10.

ARR ECHO: no ENTRY.

DEPARTURE GENERAL

Pass Departure end of runway at 1.000' AGL or below. Keep RWY heading until coastline.

DEP RWY10 ECHO: Direct EXIT.

DEP RWY10 SIERRA: Climbing right turn, intercept R180 AKR to Sierra.

DEP RWY10 PAPA: Climbing right turn until R180 AKR, then direct Papa

DEP LAKE: no EXIT.

NOT AVAILABLE

NOT AVAILABLE