

MISSION DATA CARD

OPORD		Callsign		Mission		Date/Time		
1550/2023		Edelweiss 6		Training		302000JAN23		
Task	IFR Training					Freq		
AO	IFR FAM NTTR					264.0		
Departure				Recovery				
DREAM FOUR				HI-ILS or LOC/DME Z RWY 21L				
#	Callsign		Pilot		IFF	TCN	LSR	NET
-1	Edelweiss 6-1		Hercules		1611	21Y	1711	

LOADOUT

A/A	2xA120C				GUN	100% HEI-T	
A/G					CHF	120	
POD					FLR	0	
TKS	FT300				FUEL	100%	

TOLD

	Takeoff	Target	Joker	Bingo	Land
FUEL	9166				

AIRBASES

	Name	TCN	ATIS	GND	TWR	RWY	Elev	ILS
Dep	Nellis AFB	12X	270.1	275.8	327.0	21L	1850	109.1
Arr	Nellis AFB	12X	270.1	275.8	327.0	21L	1850	109.1
Div	Creech AFB	87X	290.45	275.8	360.6			

NOTES

Departure Nesslis via DREAM FOUR to Dream, Climb 25.000 or above

Intercept TACAN MMM (90X) Outbound 305° M at 50NM

Fly TACAN TPH (119X) Inbound 260° M at 60NM

Fly TACAN TPH (119X) Outbound 145° M to 40NM

Fly TACAN BTY (94X) Inbound 170° M at 35NM

Fly TACAN BTY (94X) Outbound 124° M to 25NM

Fly TACAN INS (87X) Inbound 75° M at 35NM

Approach and Recovery via HI-ILS or LOC/DME Z RWY 21L

OTHER FLIGHTS

Callsign	Mission	Airframe	Freq	TCN	Grpld	Laser
Edelweiss 1	Training	1x F-16C	264.15	21/84		171X
AO	IFR FAM NTTR	Task	IFR Training			
Edelweiss 2	Training	1x F/A-18C	264.35	23/86		172X
AO	IFR FAM NTTR	Task	IFR Training			
Edelweiss 7	Training	1x F-16C	134.5	21/84		171X
AO		Task	LCR Chance			
Edelweiss 5	Training	1x F-16C	264.3	21/84		151X
AO	IFR FAM NTTR	Task	IFR Training			
Panther 3	Training	1x F/A-18C	264.35	23/86		172X
AO	IFR FAM NTTR	Task	IFR Training			
Edelweiss 1	Training	1x F-16C	264.15	21/84		171X
AO	IFR FAM NTTR	Task	IFR Training			

RADIO CHANNELS

#	Freq	Name
1		Flight/Squadron specific
2	289.4	Nellis Clearance Delivery
3	275.8	Nellis Ground
4	327.0	Nellis Tower
5	385.4	Nellis Approach/Departure West
6	273.55	Nellis Approach/Departure East
7	317.525	Nellis Control -- Sally
8	254.4	Nellis Control-- Lee
9	305.6	SOF Bullseye
10	343.725	EMERGENCY SINGLE FRQ
11	270.1	Nellis ATIS
12	360.625	Creech AFB Tower
13	250.1	HAVE QUICK 13
14	251.1	HAVE QUICK 14
15	252.1	HAVE QUICK 15
16	377.8	Blackjack
17	265.0	KC-135 AR-641A
18	360.8	KC-135MPRS AR-635
19	319.8	KC-135MPRS AR-625
20	300.05	KC-135 AR-231V

RAMROD

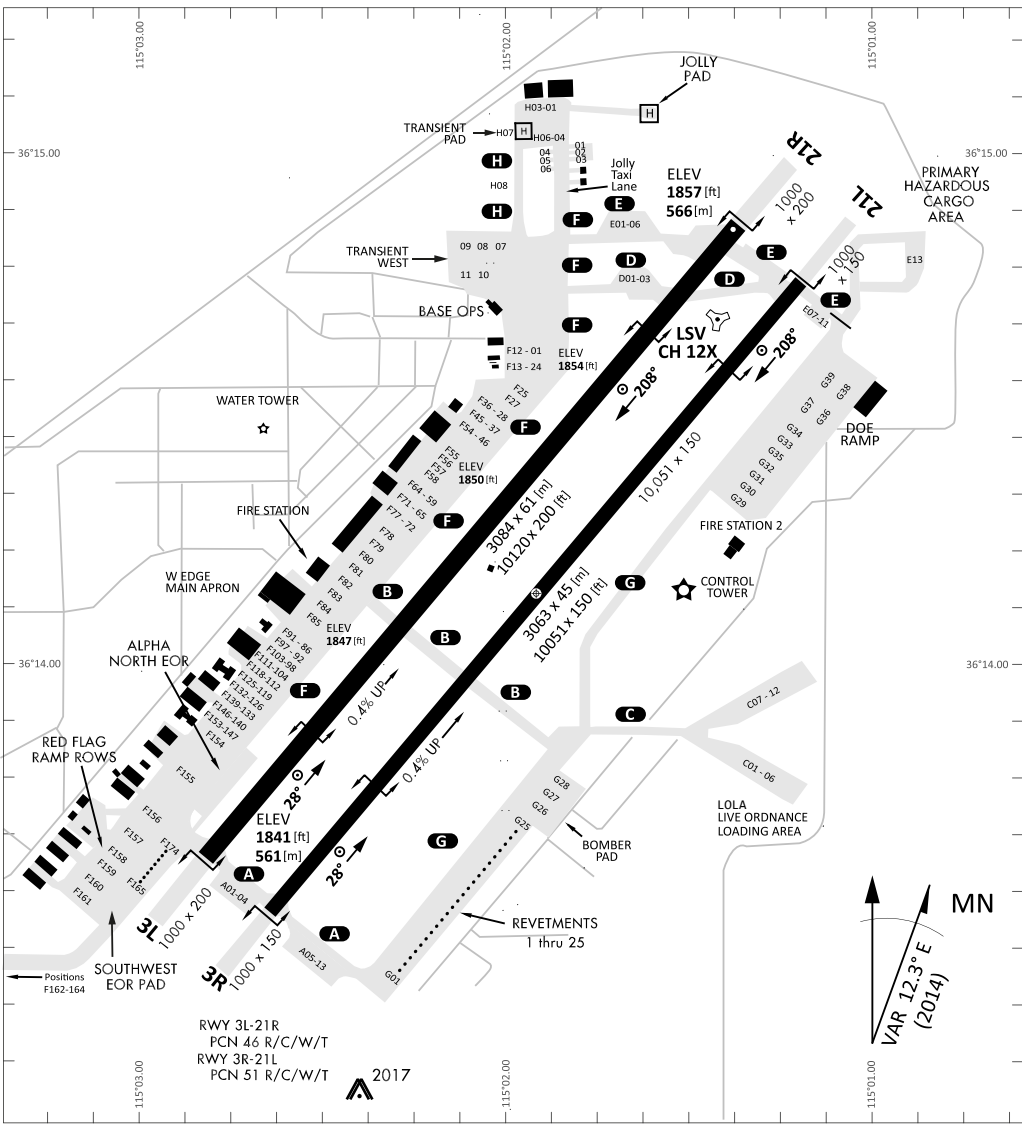
0	1	2	3	4	5	6	7	8	9
E	D	U	C	A	T	I	O	N	S

KTC 1400 C

	0	1	2	3	4	5	6	7	8	9
A	SVXY	NWT	GMD	QA	RK	HFJ	IC	LE	PU	OB
B	GEWX	USV	NRM	PC	IA	BHL	FT	OY	KJ	DQ
C	DXHG	NBJ	YWR	MQ	FA	IKC	LE	OV	TU	SP
D	UWVS	LXG	TNY	FP	OC	ARM	JE	QH	DK	IB
E	DCNR	QEG	VML	XH	UP	ASI	WY	TB	KO	JF
F	TAIQ	WPC	YLX	JD	SO	RBG	HU	KM	NF	EV
G	SVJG	WBE	OPF	KC	AQ	TUI	HN	RM	DX	LY
H	RUWO	SBH	EFC	VA	QP	NXT	JG	LY	IK	MD
I	QWSM	JPL	XFH	KG	AC	NDT	VO	UY	RE	BI
J	UPQK	ODT	RSX	BA	CW	MFH	JL	GV	EY	NI
K	TYMP	CQJ	VXD	GI	OL	NWU	HE	FB	RK	SA
L	SOBU	CHE	VWD	AK	LM	YFT	PQ	GX	RI	NJ
M	DTYN	QHG	AVL	CU	IE	FOW	BX	JK	PR	MS
N	MHQF	NGE	OVS	TA	LI	UWX	DK	YJ	PC	RB
O	PTXV	OBF	LSJ	KM	WY	QNE	IG	RC	DH	AU
P	BJFI	KAD	GYU	NC	QO	TLH	MW	RE	SX	VP
Q	TGLY	AKF	RHS	XE	IP	BOD	WJ	QU	CV	NM
R	IRHP	FTY	AJE	KG	QM	NSW	BU	CV	OL	DX
S	TSNE	LYI	BUX	AO	VK	CDJ	QR	GP	WM	HF
T	VODW	UFP	ILX	KH	YA	BET	SC	JM	NQ	RG
U	OPHW	BDL	CAR	KM	XY	QES	FU	TV	IN	JG
V	PDSF	HYG	VBC	OI	QM	RNW	JA	XL	UT	EK
W	VKMP	AOW	ULB	DR	TI	XJS	GE	YF	NQ	CH
X	OUHM	EIN	VSY	WF	TP	CXD	LA	BQ	KG	JR
Y	KJVN	YFS	XDB	IT	LQ	WHE	CA	UO	GM	PR

NAVAIDS

Id	Name	Channel	Position	Elevation
BCE	Bryce Canyon	75	N3741.35 W11218.23	9040
BIH	Bishop	33	N3722.62 W11821.99	4114
BLD	Boulder	114	N3559.75 W11451.82	3650
BTY	Beatty	94	N3648.54 W11644.86	2925
CDC	Cedar City	120	N3747.24 W11304.90	5463
DAG	Daggett	79	N3457.75 W11634.69	1760
EED	Needles	99	N3445.96 W11428.43	650
GFS	Goffs	91	N3507.87 W11510.59	4019
GRL	Groom Lake	18	N3713.91 W11548.16	4475
HEC	Hector	74	N3447.83 W11627.78	1854
ILC	Wilson Creek	110	N3815.02 W11423.65	9318
INS	Creech AFB	87	N3635.20 W11540.12	3101
LAS	McCarran Intl	116	N3604.78 W11509.59	2142
LSV	Nellis	12	N3614.68 W11501.50	1864
MLF	Milford	58	N3821.62 W11300.79	4977
MMM	Mormon Mesa	90	N3646.16 W11416.65	2120
MVA	Mina	98	N3833.92 W11801.97	7860
OAL	Coale Dale	124	N3800.20 W11746.23	4800
PGS	Peach Springs	57	N3537.48 W11332.67	4754
TPH	Tonopah Muni	119	N3801.84 W11702.01	5330
TQQ	Silverbow	77	N3748.00 W11647.00	5500
UTI	St George	23	N3705.29 W11335.53	2871



PAR	RWY	CAT	MINIMA	ARP	ELEV	Scale
	21L	A B D E	2057 - 0.8 200 (200-0.8/1.6) GS 3°	36° 14.060° N 115° 01.058° W	1857 [ft] 566 [m]	0 300 600 900 1200 1500 [m] 0 1000 2000 3000 4000 5000 [ft]
	3R	A B D E	2057 - 0.8 200 (200-0.8/1.6) GS 3°			
SRA	21R	A C D E	2257 - 1.2 350 (350-1.2/1.6)			
	3L	A C D E	2257 - 1.2 350 (350-1.2/1.6)			

RWY	TORA	TODA	ASDA	LDA	PSN	THR	ALS
21L	10051 [ft] 3063 [m]	11051 [ft] 3368 [m]	11051 [ft] 3368 [m]	10051 [ft] 3063 [m]	36°14.043' N	115°01.018' W	⊕
3R	10120 [ft] 3084 [m]	11120 [ft] 3398 [m]	11120 [ft] 3398 [m]	10120 [ft] 3084 [m]	36°13.029' N	115°02.038' W	

ATIS	NELLIS GROUND	NELLIS TOWER	NELLIS CONTROL	TACAN	ILS RWY 21L	NELLIS EAST	NELLIS WEST
270.100 MHz	275.800 121.800	327.000 132.55	317.525	LSV 12X	109.10 Mhz	384.400	385.000

DREAM FOUR DEPARTURE DREAM4 | VALID 2014

NELLIS AFB (KLSV)

LAS VEGAS, NEVADA

ATIS
270.100
NELLIS GROUND
275.800
NELLIS TOWER
327.000
NELLIS CONTROL
317.525
NELLIS DEP/APP EAST
384.400
BLACKJACK
377.800

DREAM

N3710.34
W11459.53

MINTT
LAS 351/38
17,000

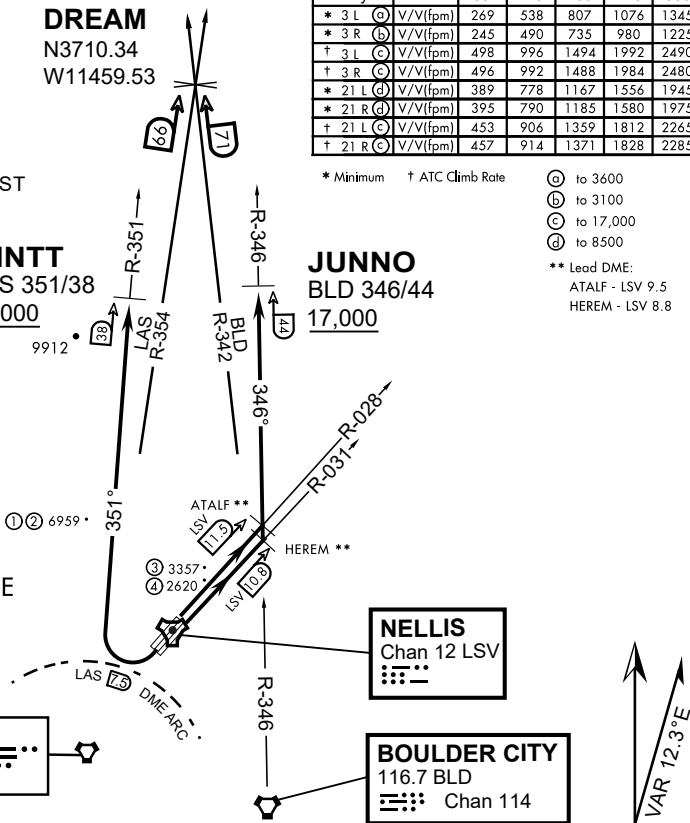
JUNNO
BLD 346/44
17,000

Rwy	Knots	60	120	180	240	300	360
* 3 L (A)	V/Vl(fpm)	269	538	807	1076	1345	1614
* 3 R (B)	V/Vl(fpm)	245	490	735	980	1225	1470
† 3 L (C)	V/Vl(fpm)	498	996	1494	1992	2490	2988
† 3 R (C)	V/Vl(fpm)	496	992	1488	1984	2480	2976
* 21 L (D)	V/Vl(fpm)	389	778	1167	1556	1945	2334
* 21 R (D)	V/Vl(fpm)	395	790	1185	1580	1975	2370
† 21 L (C)	V/Vl(fpm)	453	906	1359	1812	2265	2718
† 21 R (C)	V/Vl(fpm)	457	914	1371	1828	2285	2742

* Minimum † ATC Climb Rate

- (A) to 3600
 - (B) to 3100
 - (C) to 17,000
 - (D) to 8500
- ** Lead DME:
ATALF - LSV 9.5
HEREM - LSV 8.8

- ① 12.24 NM from Rwy 21R
- ② 12.40 NM from Rwy 21L
- ③ 5.67 NM from Rwy 3L
- ④ 5.85 NM from Rwy 3R



NOT FOR CIVIL USE

CAUTION: If unable to comply with restrictions advise ATC prior to departure.

DEPARTURE ROUTE DESCRIPTION

TAKE-OFF RWY 3L

- Fly runway heading to intercept the LSV TACAN R-028 then direct ATALF, intercept the BLD VORTAC R-346 then direct JUNNO, cross JUNNO at or above 17,000, then via assigned route.

TAKE-OFF RWY 3R

- Fly runway heading to intercept the LSV TACAN R-031 then direct HEREM, intercept the BLD VORTAC R-346 then direct JUNNO, cross JUNNO at or above 17,000, then via assigned route.

TAKE-OFF RWY 21L/R

- Turn right to intercept LAS VORTAC R-351 outbound. Remain North of LAS 7.5 DME turning Northbound. Intercept LAS R-351 between 5000 and 6000, do not proceed West of LAS R-351. Cross MINTT at or above 17,000, then via assigned route.

NOISE ABATMENT PROCEDURES: Fly acc. Nellis Noise Abatement instructions

DREAM FOUR DEPARTURE (DREAM4 • DREAM)



INDIAN SPRINGS, NEVADA

TACAN INS Chan 87	APCH CRS 065°	Rwy ldg TDZE 3133	9002 3113
		Arpt Elev 3113	

INDIAN SPRINGS AF AUX (KINS)

▼ * MISSED APPROACH: Straight ahead to INS TACAN, intercept INS R-outbound, cross 17 DME at or above 9500, then direkt KSV TACAN 114

NELLIS CON - CREECH AFB TOWER 118.30 60.60 - GND CON - 0

NOT FOR CIVIL USE

FOR USE UNDER BASIC VFR WEATHER MINIMUMS ONLY

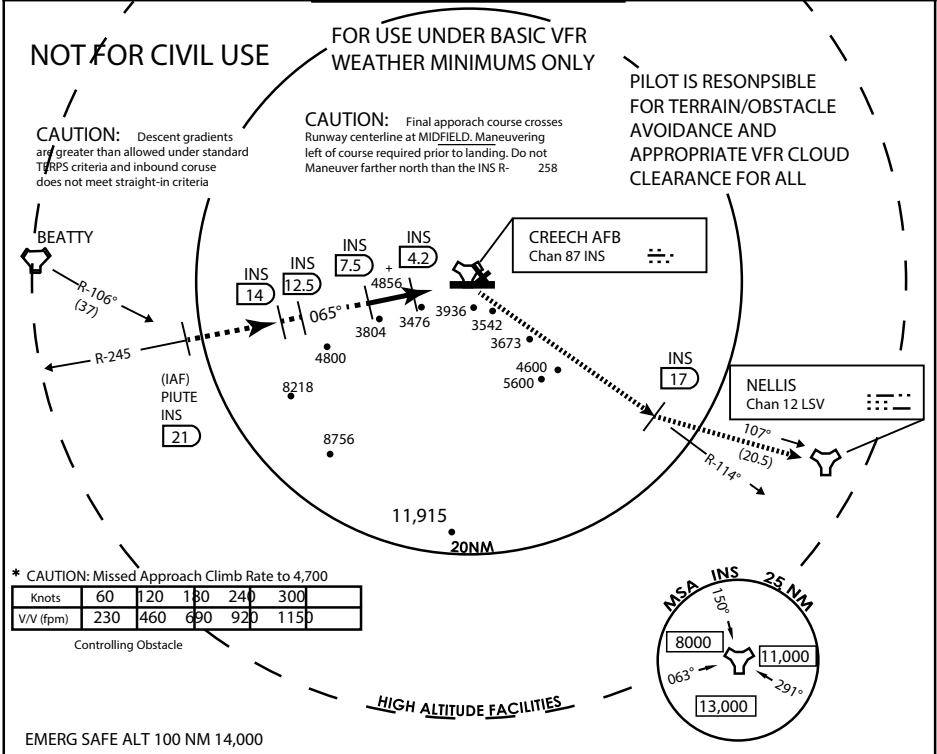
PILOT IS RESPONSIBLE FOR TERRAIN/OBSTACLE AVOIDANCE AND APPROPRIATE VFR CLOUD CLEARANCE FOR ALL

CAUTION: Descent gradients are greater than allowed under standard TERPS criteria and inbound course does not meet straight-in criteria

CAUTION: Final approach course crosses Runway centerline at MIDFIELD. Maneuvering left of course required prior to landing. Do not Maneuver farther north than the INS R- 258

Modified by viaBog 66 for use with DCS
NOT FOR REAL LIFE NAVIGATION

Modified by viaBog 66 for use with DCS
NOT FOR REAL LIFE NAVIGATION



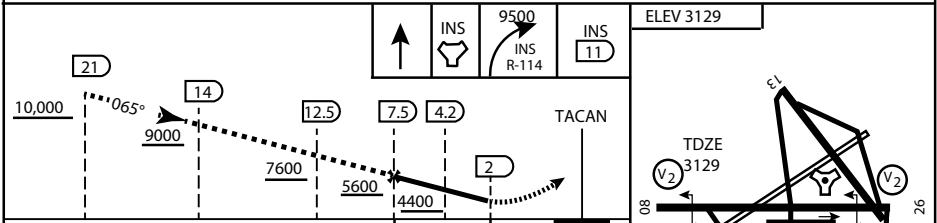
* CAUTION: Missed Approach Climb Rate to 4,700

Knots	60	120	180	240	300
V/V (fpm)	230	460	690	920	1150

Controlling Obstacle

HIGH ALTITUDE FACILITIES

EMERG SAFE ALT 100 NM 14,000



CATEGORY	A	B	C	D	E
S-8	3760-1 1/2	627 (700-1 1/2)	3760-1 3/4 627 (700-1 3/4)	3760-2 627 (700-2)	3760-2 1/4 627 (700-2 1/4)
CIRCLING	NOT AUTHORIZED				

MIRL Rwy 8-26

CITY OF INDIAN, NEVADA

INDIAN SPRINGS AF AUX (KINS)

(FOR DAY VFR USE ONLY)



