

**MISSION DATA CARD**

OPORD		Callsign		Mission		Date/Time	
1540/2023		Beast 1		Training		262000JAN23	
Task	CAP / Escort Training / Agressor					Freq	
AO	BVR Training Range					135.0	
Departure				Recovery			
RWY28 VFR				RWY10 VFR			
#	Callsign	Pilot	IFF	TCN	LSR	NET	
-1	Beast 1-1	Cyking	1621	21Y	1561		
-1	Beast 1-1	Cyking	1621	21Y	1561		
-2	Beast 1-2	Chance	1622	84Y	1562		
-3	Beast 1-3	Newbie	1623	84X	1563		
-3	Beast 1-3	Newbie	1623	84X	1563		

**LOADOUT**

A/A	2xA9M, 2xA120C			GUN	100% HEI-T
A/G				CHF	60
POD				FLR	60
TKS	2xFT300			FUEL	100%

**TOLD**

	Takeoff	Target	Joker	Bingo	Land
FUEL	11169			3000	

**AIRBASES**

	Name	TCN	ATIS	GND	TWR	RWY	Elev	ILS
Dep	Akrotiri AFB	107X	288.2	240.1	339.85	28	62	109.7
Arr	Akrotiri AFB	107X	288.2	240.1	339.85	28	62	109.7

**FLIGHTPLAN**

#	Name	Navaid/Coords/DME	ALT	TOT
1	PAPA	N34 39.390 E032 46.480	5000	
2	BAPAX	N35 42.099 E034 10.419	25000	
3	Holding	N36 00.076 E034 06.881	25000	
4	CAP Entry	N36 10.234 E033 16.209	25000	
5	CAP Turning	N36 10.234 E033 16.209	25000	
6	ECHO	N34 42.600 E033 10	5000	

**COMMS**

Radio	Usage
1	4,16,4

**SUPPORT****Tanker**

Callsign	TCN	Freq	ALT	TAS
ARCO 1	22Y	319.8	FL222	400
	Pos	ARCO1: (N3701 E03457)		
SHELL 3	93Y	278.75	FL170	215
	Pos	SHELL3: (N3436 E03419)		

**AWACS**

Callsign	Freq	ALT	Pos
OVERLORD2	377.8	FL320	N3713 E03643 - N3714 E03749

## OTHER FLIGHTS

Callsign	Mission	Airframe	Freq	TCN	Grpld	Laser
Raptor 2	Training	4x F-16C	134.0	21/84		156X
	AO	BVR Training Range	Task	CAP / Escort Training		
Edelweiss 6	Training	2x A-10C	134.65	21/84	40	166X
	AO	Cape Pyla Range	Task	LD Bombs / AAR		
Monster 1	Training	4x A-10C	132.15	25/88	21	161X
	AO	CONVOY HUNT TRAINING RANGE	Task	GBU12 - AGM-65D		
T-Rex 2	Training	4x A-10C	132.25	27/90	25	165X
	AO	CONVOY HUNT TRAINING RANGE	Task	GBU12 - AGM-65D		
Tiger 3	Strike	4x F/A-18C	261.25	21/84		156X
	AO	ATO603	Task	Strike Pkg Charlie		
Tiger 1	Training	2x F/A-18C	261.15	21/84	1	156X
	AO	SA2 Training Site / hot	Task	SAED/DEAD Training		

**RADIO CHANNELS**

#	Freq	Name
1		Flight/Squadron specific
2	288.2	Akrotiri ATIS
3	240.1	Akrotiri Ground
4	339.85	Aktrotiri Tower
5	335.05	Akrotiri Approach
6	360.1	Incirlik Tower
7	371.35	Incirlik Ground
8	377.475	Incirlik ATIS
9		No Preset
10	127.3	Paphos ATIS
11	353.8	Paphos Tower
12	304.0	CVN-73 George Washington
13	302.0	LHA-1 Tarawa
14	259.0	CV-59 Forrestal
15		No Preset
16	377.8	Overlord
17	265.0	KC-135 Texaco-1 medium/slow
18	319.8	KC-135 Arco-1
19	360.8	KC-135MPRS Arco-2
20	256.0	S-3B Recovery Tanker

**RAMROD**

0	1	2	3	4	5	6	7	8	9
I	N	C	U	L	P	A	T	E	S

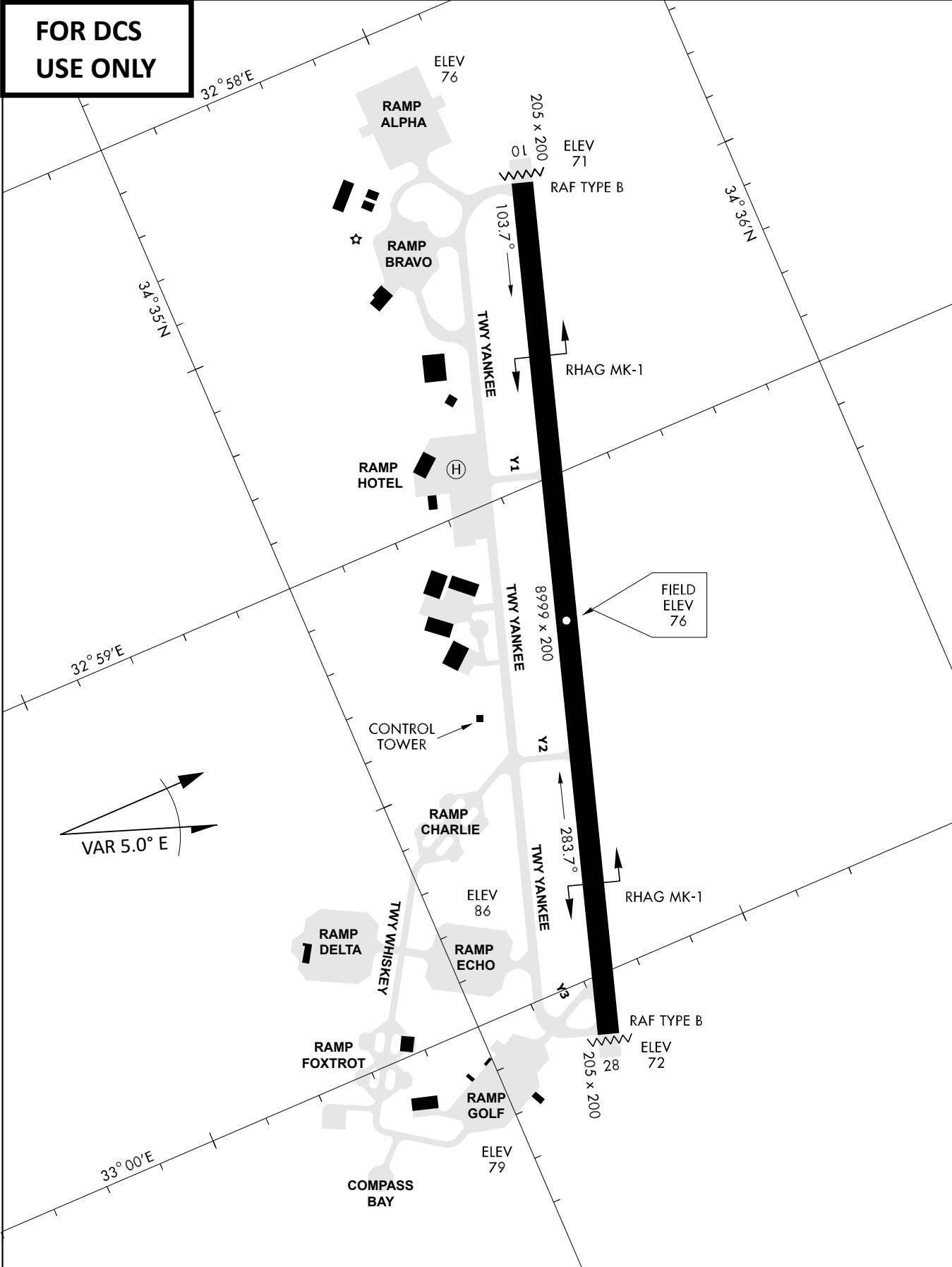
**KTC 1400 C**

	0	1	2	3	4	5	6	7	8	9
A	LPAQ	BXV	TEG	MI	UH	WKO	RJ	SF	ND	CY
B	YAPU	FNO	GJX	DI	MK	REQ	TB	HV	SW	CL
C	FLYT	DEP	KRB	AU	JI	NOG	HX	SM	VC	WQ
D	ATXS	UVB	KWJ	LD	IQ	EPH	FC	NO	RG	MY
E	AUFJ	SQV	XLG	YM	BN	CRE	WK	IT	OP	DH
F	YQOS	IGM	HCB	EP	VW	FUX	RJ	LK	AD	NT
G	SAFB	DIC	XNH	YP	GO	KEL	MR	JU	WV	TQ
H	GJQL	AIX	PMY	UR	CK	WBD	FN	TH	EO	SV
I	TEMF	NBX	GKY	UQ	PS	CIW	LV	HA	RO	DJ
J	AGVE	LWF	NQP	HS	YI	DKT	RJ	MX	UB	OC
K	HDKT	ISL	EQC	MU	WA	BGY	JN	FX	RO	VP
L	FVUC	BMR	LTH	OD	WP	YEX	SG	IJ	KQ	NA
M	FAOT	KSQ	NIU	RD	GV	CJX	ML	HP	WY	BE
N	OWUT	VKP	GRF	NL	HA	BXD	QI	JC	ES	MY
O	UJYO	DRG	HLK	AI	SN	TPF	BC	VM	QE	XW
P	YWGM	PBH	XOS	RE	TJ	KIA	VU	FD	NL	CQ
Q	GSJT	LMI	BVA	KO	XP	WCF	YE	RH	UN	QD
R	PWKY	XVS	MBC	ED	OR	NHJ	TF	LA	UG	QI
S	SANM	FYL	HKI	TV	DR	JQU	GB	OW	EX	PC
T	EVPK	GIW	TLQ	HN	UF	XRA	MD	YO	JC	BS
U	OMHK	NTF	LRC	GS	YE	DQU	BX	VA	WI	PJ
V	HIWG	AXP	DKB	SL	RT	QEO	FM	NY	JC	UV
W	SNPQ	TVY	JWF	IX	BA	MUO	GD	CK	EL	RH
X	DSYQ	NEA	CTL	IB	WU	XOH	JP	GR	VM	KF
Y	SRPE	GCF	JTL	DH	OB	IUN	YW	VA	QM	XK

**NAVAIDS**

<b>Id</b>	<b>Name</b>	<b>Channel</b>	<b>Position</b>	<b>Elevation</b>
DAN	Incirlik	21	N37 00.950 E035 26.883	243
AKR	Akrotiri	107	N34 34.765 E032 57.769	147
PHA	Paphos	79	N34 42.997 E032 28.963	35
RMD	Ramat David	84	N32 39.892 E035 11.265	136
OS66	Kuweires Military Aviation Institute	36	N36 11.362 E037 34.226	1200

**FOR DCS  
 USE ONLY**



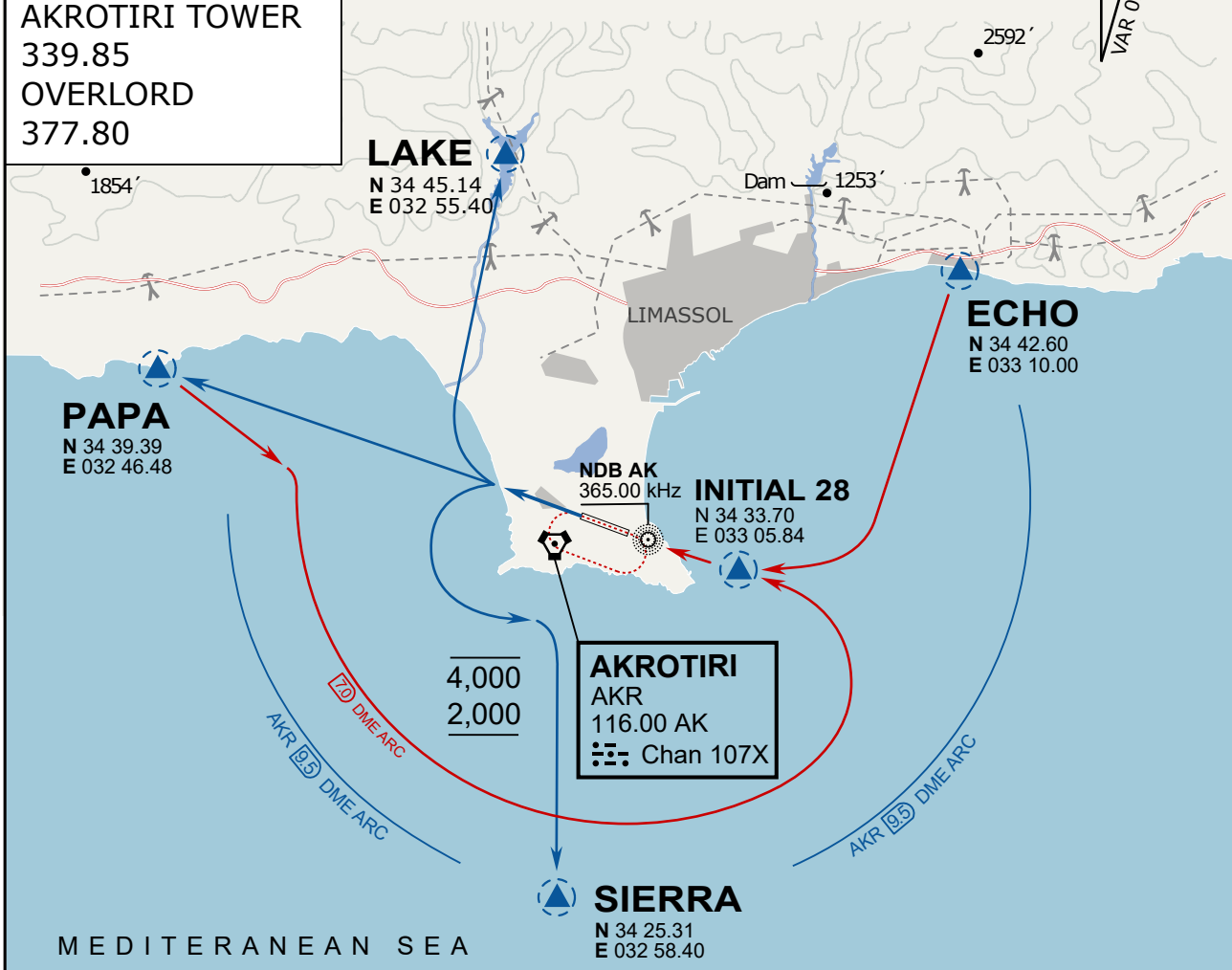
ATIS	AKROTIRI GND	AKROTIRI TWR	OVERLORD CONTROL	TACAN	FIELD ELEVATION
288.20 MHz	240.10   122.10	339.85   130.075	377.8	AKR 107X	<b>75 [ft] 23 [m]</b>



**ATIS**  
 288.20  
**AKROTIRI GROUND**  
 240.10  
**AKROTIRI TOWER**  
 339.85  
**OVERLORD**  
 377.80

**NOT FOR CIVIL USE**

CAUTION: If unable to comply with restrictions advise ATC prior to departure.



MEDITERRANEAN SEA

### ARR / DEP ROUTE DESCRIPTION

#### STRAIGHT-IN RWY28

Pass ENTRY at 5.000' MSL or below, pass INITIAL at 1.500' MSL or below.

#### OVERHEAD BREAK RWY28

Pass ENTRY at 5.000' MSL or below, pass INITIAL at 2.000' MSL, break to the south.

#### DEPARTURE GENERAL

Pass Departure end of runway at 1.000' or below.

DEP RWY28 PAPA: Fly straight ahead to exit.

DEP RWY28 LAKE: Fly straight ahead until coast, than right turn direct exit.

DEP RWY28 SIERRA: Fly straight ahead until coastline, then climbing left turn, intercept AKR R-180 to exit.

DEP ECHO: no exit.

ATIS

288.20

AKROTIRI GROUND

240.10

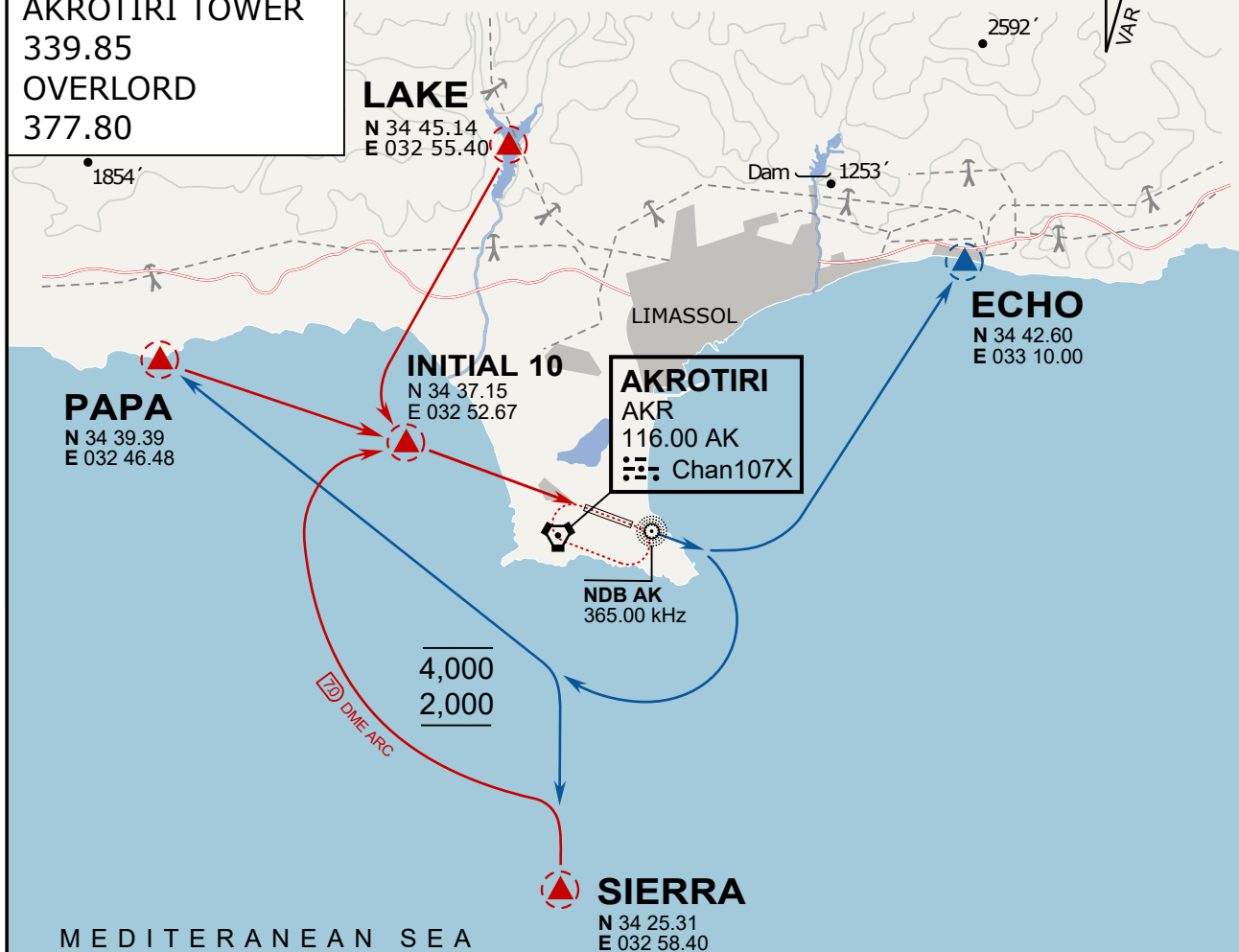
AKROTIRI TOWER

339.85

OVERLORD

377.80

NOT FOR CIVIL USE

CAUTION: If unable to comply  
with restrictions advise ATC  
prior to departure.

## ARR / DEP ROUTE DESCRIPTION

ARRIVAL GENERAL

Pass Entry at 5.000' or below. Overhead Brake RWY 10: pass INITIAL 10 at 2.000' MSL.  
Straight-in RWY 10 : pass INITIAL 1.500' or below.

ARR RWY10 PAPA / LAKE: Direct initial.

ARR RWY10 SIERRA: Intercept ARC 7 of AKR to INITIAL 10.

ARR ECHO: no ENTRY.

DEPARTURE GENERAL

Pass Departure end of runway at 1.000' AGL or below. Keep RWY heading until coastline.

DEP RWY10 ECHO: Direct EXIT.

DEP RWY10 SIERRA: Climbing right turn, intercept R180 AKR to Sierra.

DEP RWY10 PAPA: Climbing right turn until R180 AKR, then direct Papa

DEP LAKE: no EXIT.