

MISSION DATA CARD

OPORD		Callsign		Mission		Date/Time		
1522/2023		Raptor 1		Training		232030JAN23		
Task	Dive Bomb					Freq		
AO	PYLA BOMBING RANGE					134.0		
Departure				Recovery				
RWY10 SID				RWY10 VFR				
#	Callsign		Pilot		IFF	TCN	LSR	NET
-1	Raptor 1-1		Cyking		1611	21Y	1561	
-2	Raptor 1-2		Void		1612	84Y	1562	
-3	Raptor 1-3		MKay		1613	84X	1563	
-4	Raptor 1-4		Woodman		1614	21X	1564	

LOADOUT

A/A	2xA120C, 2xA9X				GUN	100% HEI-T	
A/G	2xM82, 2xM82SE				CHF	60	
POD	HTS, TGP				FLR	60	
TKS	FT300				FUEL	100%	

TOLD

	Takeoff	Target	Joker	Bingo	Land		
FUEL	9166						

AIRBASES

	Name	TCN	ATIS	GND	TWR	RWY	Elev	ILS
Dep	Akrotiri AFB	107X	288.2	240.1	339.85	28	62	109.7
Arr	Akrotiri AFB	107X	288.2	240.1	339.85	28	62	109.7

FLIGHTPLAN

#	Name	Navaid/Coords/DME	ALT	TOT
1	PAPA	N34 39.390 E032 46.480	5000	
2	ECHO	N34 42 36 E033 10 00.001	5000	
3	Holding	N34 50 19.998 E033 45 51.883	20000	
4	IP	N34 50 21.063 E033 51 51.645	20000	
5	TGT	N34 57 01.766 E033 51 52.158	20000	
6	OFF	N34 57 02.158 E033 56 04.224	20000	
7	BASE	N34 50 20.400 E033 56 05.838	20000	

COMMS

Radio	Usage
1	2 (ATIS) 4(Tower) 16 (Overload) 2/4
2	134.00

OTHER FLIGHTS

Callsign	Mission	Airframe	Freq	TCN	Grpld	Laser
Claw 1	Training	2x AH-64D	133.5	21/84		156X
AO	AAA Range alles und hot		Task			
T-Rex 2	Training	4x A-10C	132.25	27/90	25	165X
AO	GECITKALE AIRPORT RANGE		Task	Tanker / GBU12		
Monster 1	Training	4x A-10C	132.15	25/88	21	161X
AO	GECITKALE AIRPORT RANGE		Task	Tanker / GBU12		
Edelweiss 6	Training	2x A-10C	134.65	21/84	40	166X
AO	Cyprus		Task	AAR / VFR Flight ETTR		
Tiger 1	Training	4x F/A-18C	261.15	21/84	1	156X
AO	SA2 Training Site / hot		Task	SAED/DEAD Training		
Vanguard 1	Training	1x AV-8B N/A	264.55	21/84		168X
AO			Task	DEAD SA2		
Panther 1	Training	2x F/A-18C	262.25	26/89		156X
AO	BVR		Task			
Cougar 1	Training	4x F-14B	261.25	21/84		156X
AO	BFM Training Range		Task	BFM Training		

RADIO CHANNELS

#	Freq	Name
1		Flight/Squadron specific
2	288.2	Akrotiri ATIS
3	240.1	Akrotiri Ground
4	339.85	Aktrotiri Tower
5	335.05	Akrotiri Approach
6	360.1	Incirlik Tower
7	371.35	Incirlik Ground
8	377.475	Incirlik ATIS
9		No Preset
10	127.3	Paphos ATIS
11	353.8	Paphos Tower
12	304.0	CVN-73 George Washington
13	302.0	LHA-1 Tarawa
14	259.0	CV-59 Forrestal
15		No Preset
16	377.8	Overlord
17	265.0	KC-135 Texaco-1 medium/slow
18	319.8	KC-135 Arco-1
19	360.8	KC-135MPRS Arco-2
20	256.0	S-3B Recovery Tanker

RAMROD

0	1	2	3	4	5	6	7	8	9
P	R	E	C	A	U	T	I	O	N

KTC 1400 C

	0	1	2	3	4	5	6	7	8	9
A	WYBU	HTK	SVG	CX	OD	RLM	IE	JF	NQ	PA
B	KHRC	NLE	WSP	MX	VJ	FQB	YO	GI	AT	UD
C	DACP	FWT	OXI	HN	RU	SLM	YV	BK	GE	JQ
D	QNUK	FGB	RLP	OV	AT	MWJ	ID	YC	SX	EH
E	HISK	JGL	MOR	ET	FY	PCA	DU	BQ	VN	WX
F	VXCR	IQH	NAP	OJ	EU	MKW	BF	SL	YT	DG
G	MLAD	GQF	NJI	WX	RO	UTV	SB	EP	KY	CH
H	JUCP	FXW	VEQ	SA	BR	IMK	GH	OD	TY	LN
I	MTOH	EGV	YRS	LI	JN	WKP	DF	XU	BC	AQ
J	YTGX	SDC	AOE	LW	KU	JBM	RV	IF	NQ	HP
K	AOIM	NYC	XEH	PD	JT	SKU	VG	FW	BR	QL
L	UKXY	WTG	PAO	EH	BV	JFQ	LN	CD	IS	MR
M	CPGN	OTD	KRB	QE	UX	SIH	YJ	WM	AV	FL
N	KVXA	OGQ	HUP	WF	LT	RIN	JB	ED	SM	YC
O	RPBQ	EXO	CNJ	IT	SL	GMF	VD	UK	YH	AW
P	LGCK	ENT	XSB	DM	PV	IAR	QJ	OW	FY	UH
Q	GTSM	OVV	JHN	AY	EI	XDR	QW	FU	PK	CL
R	IGHL	URO	FBM	YD	XE	WQN	KV	CT	JP	SA
S	JULA	VDR	KIW	MB	HQ	SFN	GY	PT	OX	CE
T	CSXB	JOT	RMQ	EA	PY	GDF	KU	IN	LH	WV
U	DOHC	MPF	VGY	IU	TB	EJK	XN	AQ	SL	WR
V	HKIC	VML	XJW	BR	PF	OET	GU	AQ	YD	NS
W	ORND	PUM	YGW	JX	IS	KQT	BC	FL	EH	VA
X	YHPM	FBE	VCQ	XO	RS	ALJ	KI	GU	TN	WD
Y	KNOC	TEF	RGH	QX	PI	ALD	VY	WS	UM	BJ

NAVAIDS

Id	Name	Channel	Position	Elevation
DAN	Incirlik	21	N37 00.950 E035 26.883	243
AKR	Akrotiri	107	N34 34.765 E032 57.769	147
PHA	Paphos	79	N34 42.997 E032 28.963	35
RMD	Ramat David	84	N32 39.892 E035 11.265	136
OS66	Kuweires Military Aviation Institute	36	N36 11.362 E037 34.226	1200

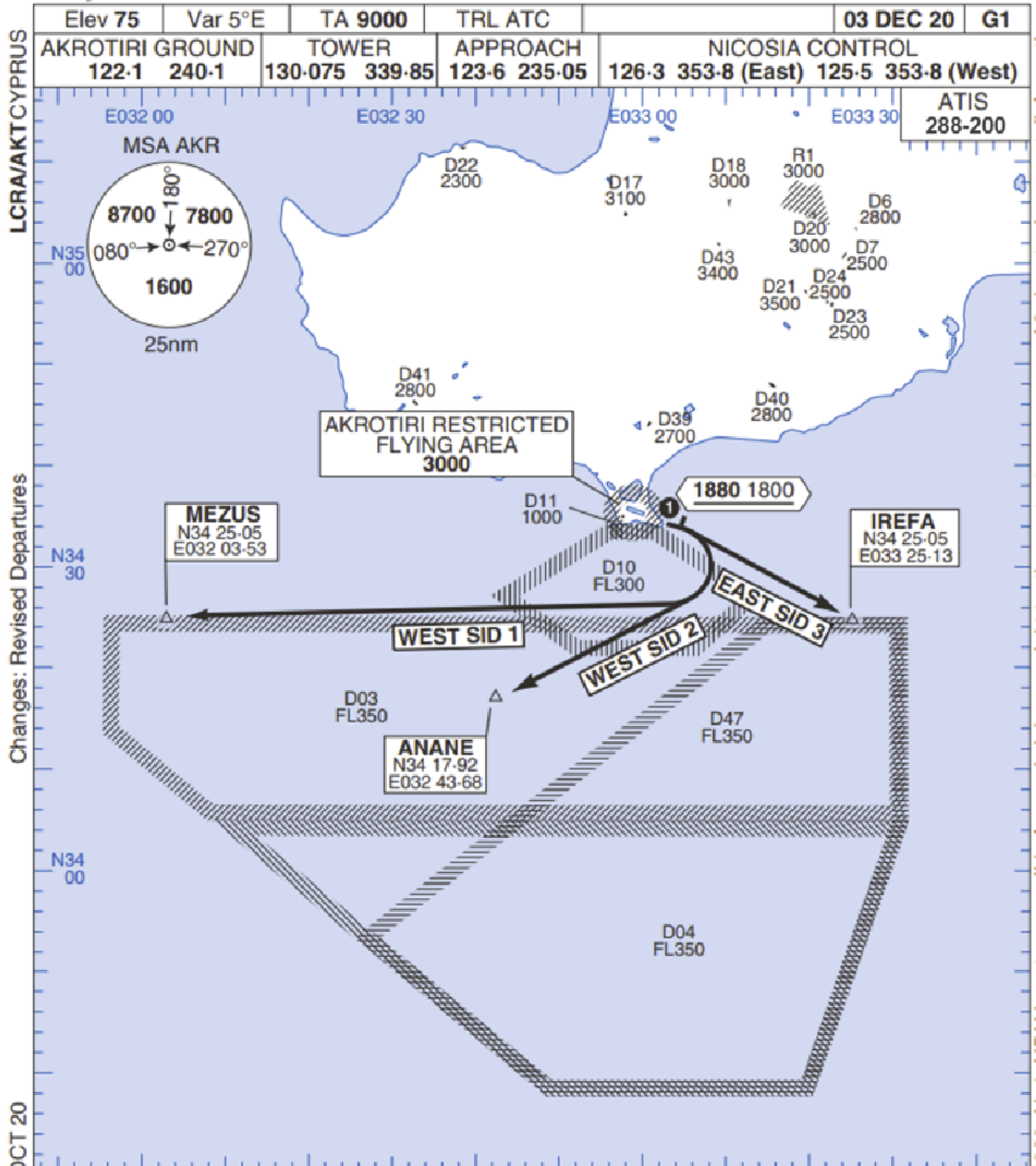
**FOR DCS
 USE ONLY**



ATIS	AKROTIRI GND	AKROTIRI TWR	OVERLORD CONTROL	TACAN	FIELD ELEVATION
288.20 MHz	240.10 122.10	339.85 130.075	377.8	AKR 107X	75 [ft] 23 [m]

Rwy 10 OMNIDIRECTIONAL DEPARTURES

AKROTIRI



LCRA/AKTCYPRUS

Changes: Revised Departures

No1 AIDU Last Amended 06 OCT 20

© UK MOD Crown Copyright 2020. No1 AIDU is not responsible for, and claims no right to, the content or accuracy of 3rd party documents/information.

Elev 75	Var 5°E	TA 9000	TRL ATC		03 DEC 20	G1
AKROTIRI GROUND 122.1 240.1		TOWER 130.075 339.85		APPROACH 123.6 235.05		NICOSIA CONTROL 126.3 353.8 (East) 125.5 353.8 (West)
						ATIS 288-200

- 1. Minimum climb gradient 7% to 1880 1800 for obstacle and operational purposes.
- 2. No turns before DER.
- 3. Turns to north of Rwy **prohibited**.
- 4. Acft unable to locate MEZUS/ANANE/IREFA should request radar vectors from ATC.

SID	RWY	ROUTEING (Including Mnm Noise Routes)
WEST SID 1	10 103°M	Ahead on Rwy Tr to 1880 1800, then right direct to MEZUS. SID terminates at 9000.
WEST SID 2		Ahead on Rwy Tr to 1880 1800, then right direct to ANANE. SID terminates at 9000.
EAST SID 3		Ahead on Rwy Tr to 1880 1800 then right direct to IREFA. SID terminates at 9000.

ATIS

288.20

AKROTIRI GROUND

240.10

AKROTIRI TOWER

339.85

OVERLORD

377.80

NOT FOR CIVIL USE

CAUTION: If unable to comply
with restrictions advise ATC
prior to departure.

MEDITERRANEAN SEA

ARR / DEP ROUTE DESCRIPTION

ARRIVAL GENERAL

Pass Entry at 5.000' or below. Overhead Brake RWY 10: pass INITIAL 10 at 2.000' MSL.
Straight-in RWY 10 : pass INITIAL 1.500' or below.

ARR RWY10 PAPA / LAKE: Direct initial.

ARR RWY10 SIERRA: Intercept ARC 7 of AKR to INITIAL 10.

ARR ECHO: no ENTRY.

DEPARTURE GENERAL

Pass Departure end of runway at 1.000' AGL or below. Keep RWY heading until coastline.

DEP RWY10 ECHO: Direct EXIT.

DEP RWY10 SIERRA: Climbing right turn, intercept R180 AKR to Sierra.

DEP RWY10 PAPA: Climbing right turn until R180 AKR, then direct Papa

DEP LAKE: no EXIT.