

**MISSION DATA CARD**

OPORD		Callsign		Mission		Date/Time		
1512/2023		Claw		Training		011000FEB23		
Task	Test					Freq		
AO						261.25		
Departure				Recovery				
VFR				ILS 28				
#	Callsign		Pilot		IFF	TCN	LSR	NET
-1	Claw-1		Butcher		4501	21Y	1561	

**LOADOUT**

A/A	2xA9L				GUN	100% HEI-T	
A/G	4xM82				CHF	120	
POD	HTS, TGP				FLR	0	
TKS	FT300				FUEL	100%	

**TOLD**

	Takeoff	Target	Joker	Bingo	Land
FUEL	9166				

**AIRBASES**

	Name	TCN	ATIS	GND	TWR	RWY	Elev	ILS
Dep	Incirlik AFB	21X	377.47 5	371.35	360.1	5	190	
Arr	Akrotiri AFB	107X	288.2	240.1	339.85	28	62	109.7
Div	Ramat David AFB		118.4		118.6	27	125	

**SUPPORT****Tanker**

Callsign	TCN	Freq	ALT	TAS
ARCO 1	22Y	319.8	FL222	400
Pos	ARCO1: (N3701 E03457)			

**RADIO CHANNELS**

#	Freq	Name
1		Flight/Squadron specific
2	288.2	Akrotiri ATIS
3	240.1	Akrotiri Ground
4	339.85	Aktrotiri Tower
5	335.05	Akrotiri Approach
6	360.1	Incirlik Tower
7	371.35	Incirlik Ground
8	377.475	Incirlik ATIS
9		No Preset
10	127.3	Paphos ATIS
11	353.8	Paphos Tower
12	304.0	CVN-73 George Washington
13	302.0	LHA-1 Tarawa
14	259.0	CV-59 Forrestal
15		No Preset
16	377.8	Overlord
17	265.0	KC-135 Texaco-1 medium/slow
18	319.8	KC-135 Arco-1
19	360.8	KC-135MPRS Arco-2
20	256.0	S-3B Recovery Tanker

**RAMROD**

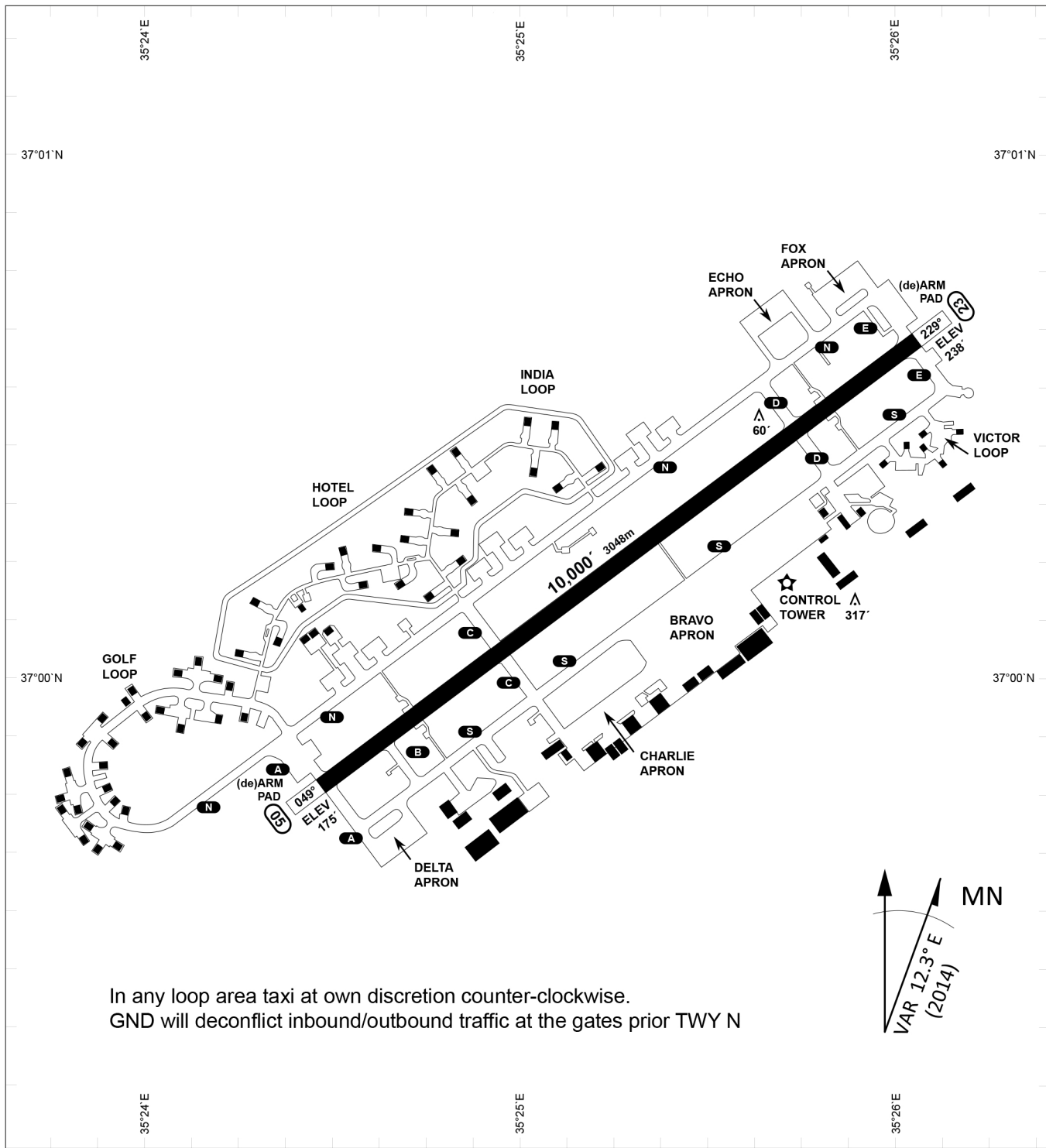
0	1	2	3	4	5	6	7	8	9
U	L	C	E	R	A	T	I	O	N

**KTC 1400 C**

	0	1	2	3	4	5	6	7	8	9
A	CFDJ	VAT	MYB	NQ	HL	OWP	IG	US	RK	EX
B	HTFA	RBJ	INC	QP	EL	WSV	KO	GY	MD	UX
C	JDXA	RNW	EOV	SB	TC	GKF	IM	YL	UP	QH
D	QTSB	KHO	GFR	WC	UI	VAE	JD	PY	XL	NM
E	QNKI	GJW	UVP	FA	XT	BOL	DE	RM	CY	HS
F	WBMD	KUH	TRJ	IC	SV	QPG	LY	EX	OF	NA
G	OYTA	SJN	IME	KV	WR	BDL	QC	HU	GX	PF
H	TUES	MQA	IRY	FN	PV	HLX	BD	OC	GJ	WK
I	YCDK	TME	AFV	OQ	BH	RGU	SL	IJ	WX	NP
J	MOST	NCH	LAR	JY	EW	BDQ	XP	GF	KV	IU
K	BHCE	OKI	ULS	NQ	GF	MAD	JT	PV	WR	YX
L	EAIQ	FWS	CNO	HD	ML	VYR	TB	UG	PJ	XK
M	SMHB	EUX	AQV	CJ	TP	RLO	GY	IN	WF	DK
N	YWLU	MCG	NED	JS	BX	OFV	PR	IK	AQ	HT
O	ENHK	MPD	QWG	AX	YL	CVT	BI	OJ	UR	FS
P	XNVA	WPL	YBS	OU	QR	GTK	IH	MD	CE	FJ
Q	TXOE	DNY	RFQ	UK	IC	GAB	MV	WP	HL	SJ
R	LPOU	DCR	WFK	YT	IJ	MSH	VB	GA	EQ	NX
S	FPMH	YRU	AGI	JK	XD	ONW	EB	TV	CQ	SL
T	CMTP	YVW	KSX	DO	JG	LHB	FQ	AN	ER	UI
U	GBQC	VUT	JND	IO	HF	MYX	PS	ER	WK	LA
V	AVFE	YQO	JNX	TI	SL	CMR	GW	HU	PB	DK
W	PFBJ	UOH	KXD	SE	VI	RAQ	NY	WT	LG	CM
X	YWJQ	VMA	POL	NC	SB	KDH	RG	TF	IX	UE
Y	MINC	RDO	GAP	QL	VF	KEX	SH	JU	TY	WB

**NAVAIDS**

<b>Id</b>	<b>Name</b>	<b>Channel</b>	<b>Position</b>	<b>Elevation</b>
DAN	Incirlik	21	N37 00.950 E035 26.883	243
AKR	Akrotiri	107	N34 34.765 E032 57.769	147
PHA	Paphos	79	N34 42.997 E032 28.963	35
RMD	Ramat David	84	N32 39.892 E035 11.265	136
OS66	Kuweires Military Aviation Institute	36	N36 11.362 E037 34.226	1200



PAR	RWY	CAT	MINIMA	ARP	ELEV	Scale 1:35'500 0 300 600 900 1200 1500 [m] 0 1000 2000 3000 4000 5000 [ft]
	21L	A B D E	2057 - 0.8 200 (200-0.8/1.6) GS 3°	37°0'56.000" N	1857 [ft]	
SRA	21R	A C D E	2257 - 1.2 350 (350-1.2/1.6)	35°26'53.000" E	566 [m]	
	3L	A C D E	2257 - 1.2 350 (350-1.2/1.6)			

RWY	TORA	TORA from D	TORA from B	COURSE	PSN THR	ALS
23	10,000 [ft] 3048 [m]	8,000 [ft] 2438 [m]		235°	37°00.611'N 035°26.368'E	⊙
05	10,000 [ft] 3048 [m]		9,000 [ft] 2743 [m]	055°	36°59.043'N 035°24.760'E	⊙

ATIS	INCIRLIK GROUND	INCIRLIK TOWER	CONTROL	TACAN	ILS RWY 05	ILS RWY 23
377.475	371.350   123.020	360.100   121.100	337.800	DAN21x	109.3MHz	111.7MHz

ATIS  
377.475 (#8)

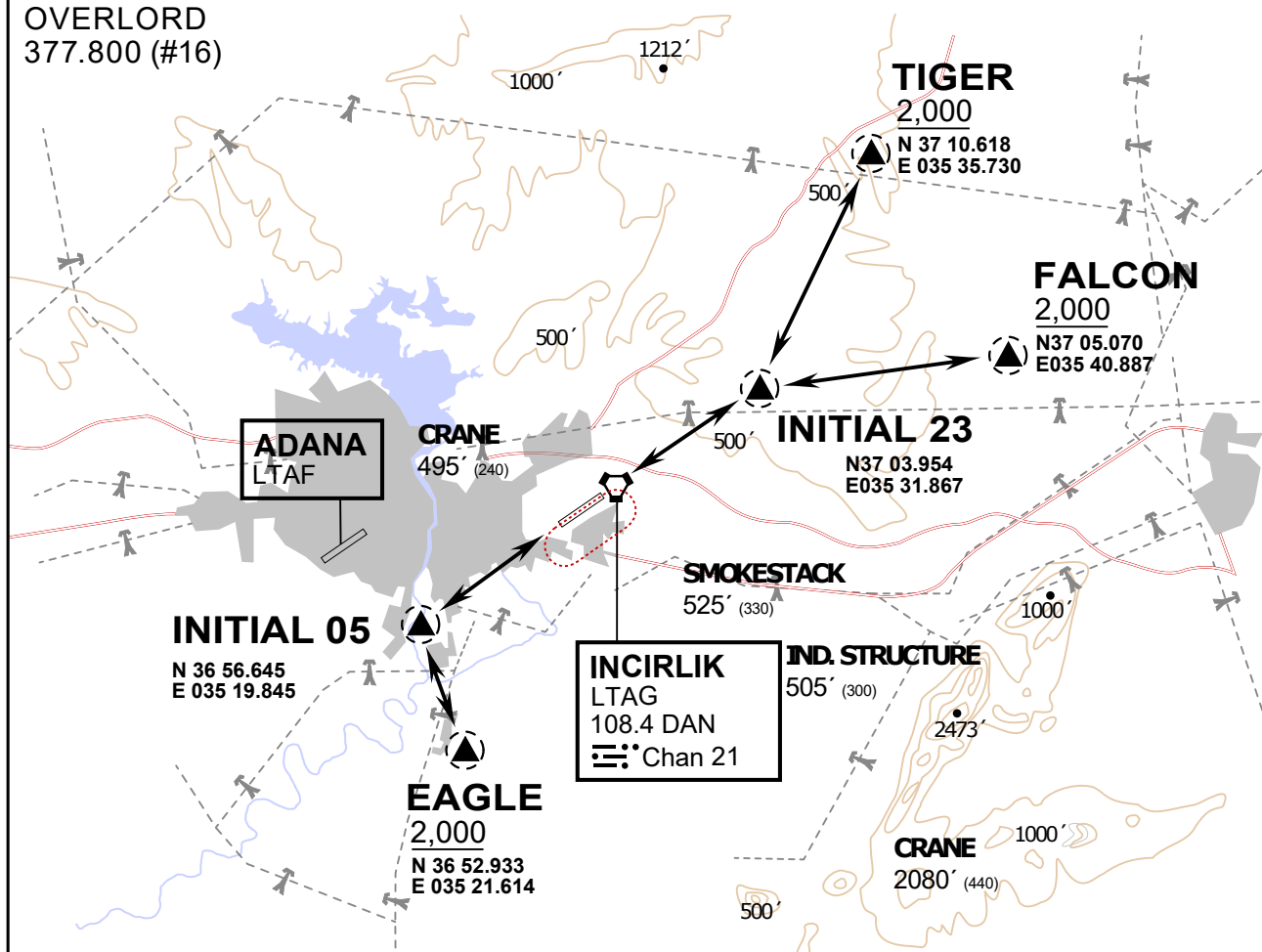
INCIRLIK GROUND  
371.3500 (#7)

INCIRLIK TOWER  
360.100 (#6)

OVERLORD  
377.800 (#16)

NOT FOR CIVIL USE

CAUTION: If unable to comply  
with restrictions advise ATC  
prior to departure.



vJaBoG32 ETTR NAV CHART



### ARR / DEP ROUTE DESCRIPTION

#### STRAIGHT-IN RWY 05 / 23

Pass entry EAGLE / TIGER / FALCON at 2000' and INITIAL at 1500'

#### OVERHEAD BREAK RWY 05 / 23

Pass entry EAGLE / TIGER / FALCON at 2500',  
pass INITIAL at 2000' break to the south at 2000' pattern altitude.

#### HELICOPTER ROUTES

Pass entry EAGLE / TIGER / FALCON at 1000' or below, pass INITIAL at 1000' break to the south at 1000' pattern altitude.

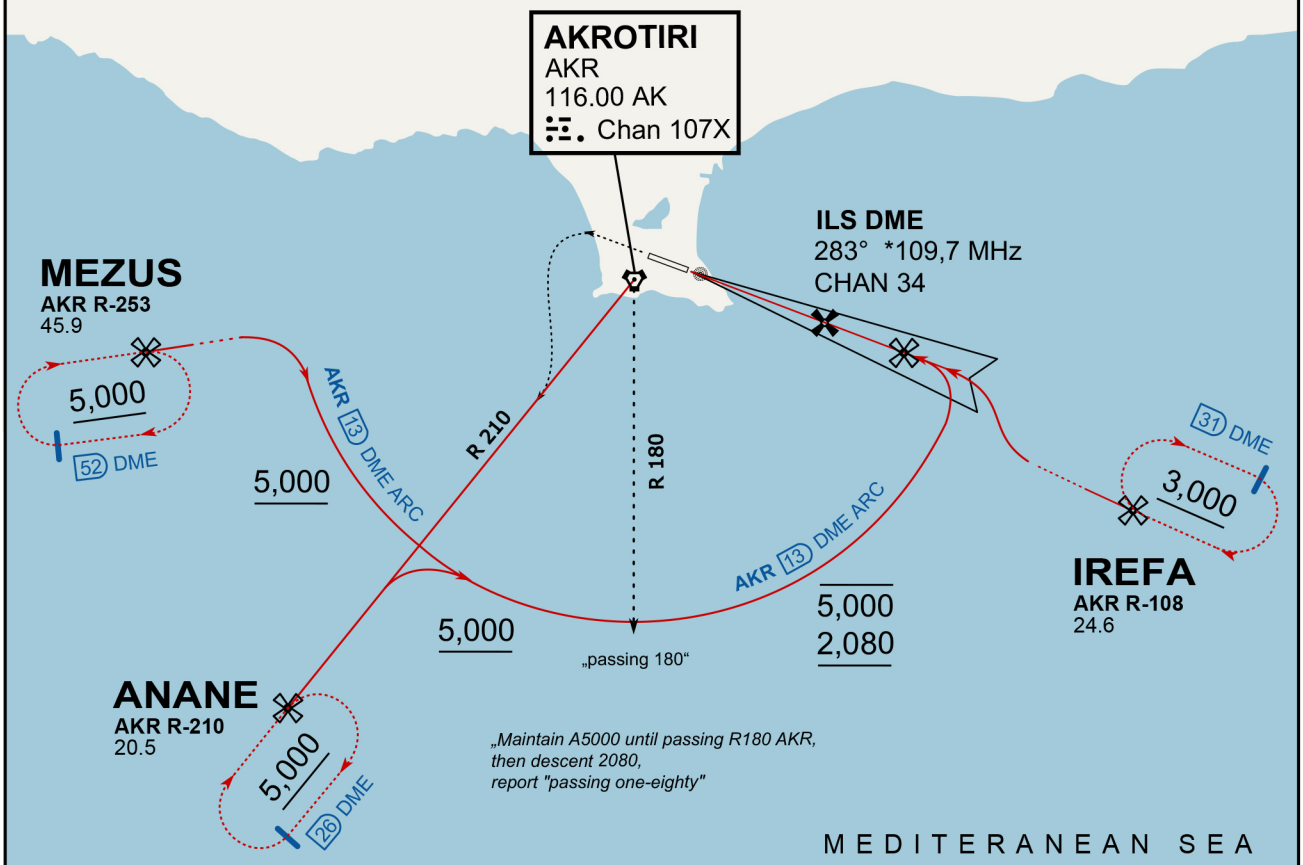
#### DEPARTURE ALL DIRECTIONS

pass DER below 1500ft

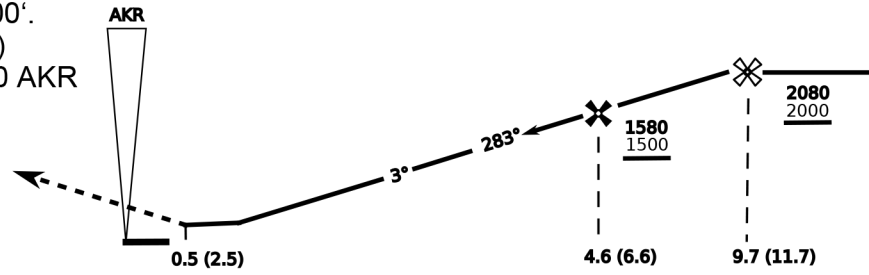
ATIS  
288.200  
AKROTIRI GROUND  
122.100  
AKROTIRI TOWER  
339.850  
APP (OVERLORD)  
377.800

NOT FOR CIVIL USE

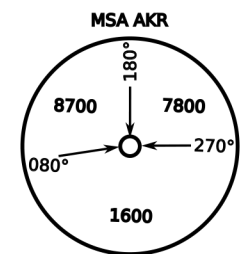
CAUTION: If unable to comply with restrictions advise ATC prior to departure.



On Track 283° climb A 4.000'.  
passing 2.080' (2.000' AAL)  
turn left and intercept R-210 AKR  
to ANANE.  
Enter ANANE Holding.

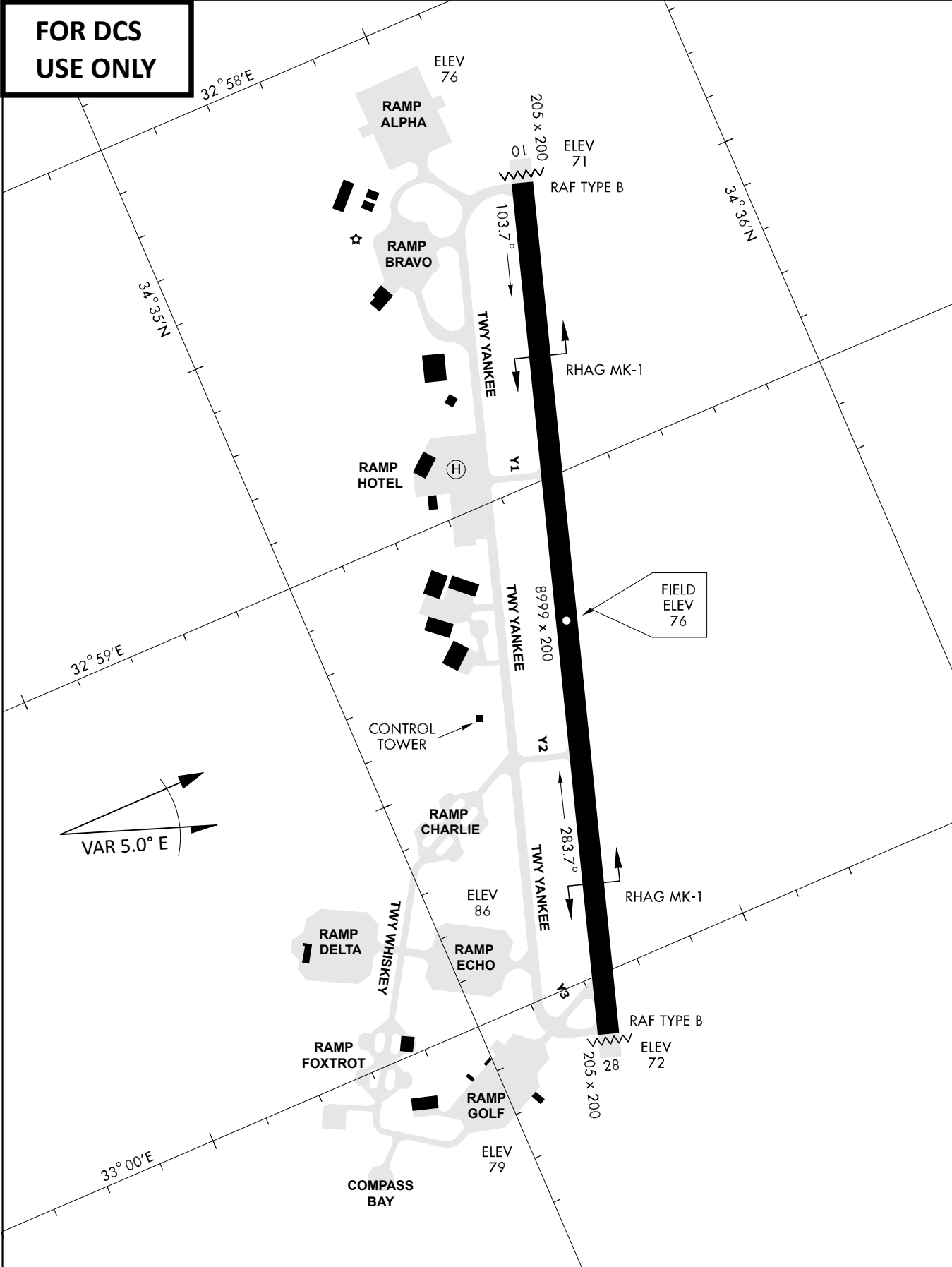


CAT	ILS/DME	LOC/DME	CIRCLE	GS (kts)				
				80	120	150	180	210
A	280 (200)	390 (320) 800m	680 (610) 1500m	FAF - MAPt (4.1NM) 3:06 2:03 1:38 1:22 1:10				
B	800m		680 (610) 1600m	RoD (fpm) 420 640 800 950 1110				
C	290 (210) 800m		780 (710) 2400m	- CIRCLING PROHIBITED N of Rwy - no AUTO coupled ILS approaches - when established on ILS contact Tower - Timing not Auth to define MAPt				
D	310 (230) 800m		780 (710) 3600m					
E	340 (260) 800m		1380 (1310) 3600m					





**FOR DCS  
 USE ONLY**



ATIS	AKROTIRI GND	AKROTIRI TWR	OVERLORD CONTROL	TACAN	FIELD ELEVATION
288.20 MHz	240.10   122.10	339.85   130.075	377.8	AKR 107X	<b>75 [ft] 23 [m]</b>

**NOT AVAILABLE**

TOWER 250.95MHz  
118.60MHz  
4.250MHz  
39.40MHz



DCS SYRIA EFFECTIVE: 19 AUG 2020

DCS SYRIA EFFECTIVE: 19 AUG 2020

