

MISSION DATA CARD

OPORD		Callsign		Mission		Date/Time		
1486/2023		Edelweiss 2		Tanker		102000JAN23		
Task						Freq		
AO						264.25		
Departure				Recovery				
RWY28 SID				TAC 28				
#	Callsign		Pilot		IFF	TCN	LSR	NET
-1	Edelweiss 2-1		Newbie		1721	21Y	1721	
-2	Edelweiss 2-2		Woodman		1722	84Y	1722	

LOADOUT

A/A	2xA120C				GUN	100% HEI-T	
A/G					CHF	120	
POD					FLR	0	
TKS	2xFT300				FUEL	100%	

TOLD

	Takeoff	Target	Joker	Bingo	Land
FUEL	11169			3000	

AIRBASES

	Name	TCN	ATIS	GND	TWR	RWY	Elev	ILS
Dep	Akrotiri AFB	107X	288.2	240.1	339.85	28	62	109.7
Arr	Akrotiri AFB	107X	288.2	240.1	339.85	28	62	109.7

FLIGHTPLAN

#	Name	Navaid/Coords/DME	ALT	TOT
1	ECHO	N34 41.470 E033 09.060		
2	ARCO1	25000 (N37 01 E034 57)		
3	SIERRA	5000 (N34 25.310 E032 58.400)		

SUPPORT**Tanker**

Callsign	TCN	Freq	ALT	TAS
ARCO 1	22Y	319.8	FL222	400
Pos	ARCO1: (N3701 E03457)			

OTHER FLIGHTS

Callsign	Mission	Airframe	Freq	TCN	GrpId	Laser
Vanguard 1	Training	1x AV-8B N/A	264.55	21/84		156X
AO		Task				

RADIO CHANNELS

#	Freq	Name
1		Flight/Squadron specific
2	288.2	Akrotiri ATIS
3	240.1	Akrotiri Ground
4	339.85	Aktrotiri Tower
5	335.05	Akrotiri Approach
6	360.1	Incirlik Tower
7	371.35	Incirlik Ground
8	377.475	Incirlik ATIS
9		No Preset
10	127.3	Paphos ATIS
11	353.8	Paphos Tower
12	304.0	CVN-73 George Washington
13	302.0	LHA-1 Tarawa
14	259.0	CV-59 Forrestal
15		No Preset
16	377.8	Overlord
17	265.0	KC-135 Texaco-1 medium/slow
18	319.8	KC-135 Arco-1
19	360.8	KC-135MPRS Arco-2
20	256.0	S-3B Recovery Tanker

RAMROD

0	1	2	3	4	5	6	7	8	9
C	R	E	D	I	T	A	B	L	Y

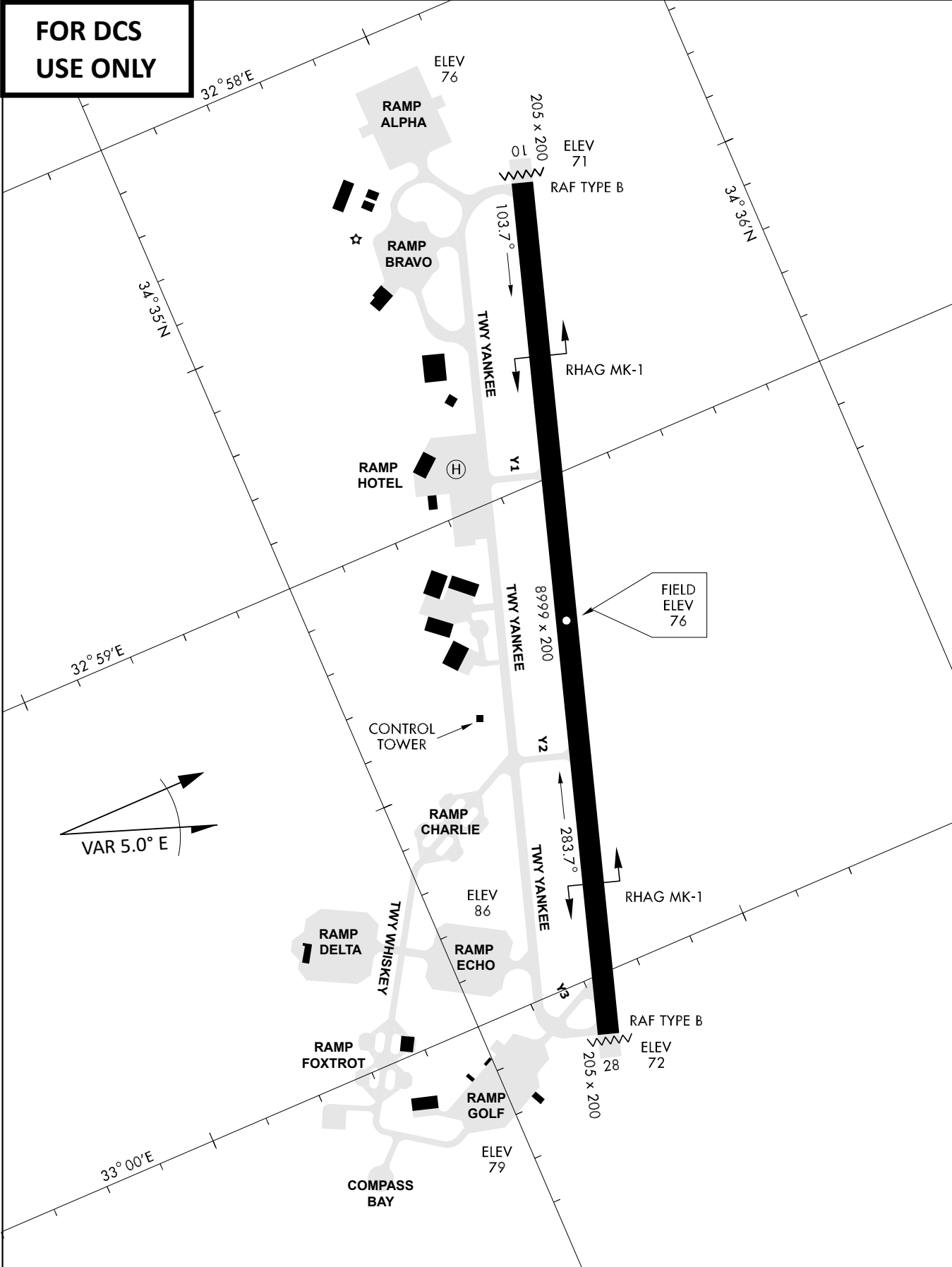
KTC 1400 C

	0	1	2	3	4	5	6	7	8	9
A	EDQY	RBG	TAV	JX	IO	UPC	HN	WK	FM	SL
B	QRFA	XUH	PJL	IT	OK	ESV	WM	YG	CB	DN
C	JLVA	SQP	MDX	YR	KH	NWG	BE	UO	TI	CF
D	PQBG	DNX	CAE	VO	RI	JUL	HK	MF	SY	TW
E	JUGY	OCS	XHR	DQ	WE	KTV	LP	MN	IB	FA
F	VRGN	YFX	MEU	IS	JP	AWO	TD	CL	HQ	BK
G	YRFW	NAI	VLC	JX	BT	PHO	UE	MD	SK	QG
H	LHME	NSV	XBJ	OR	QA	CKF	ID	GW	TY	UP
I	GYIX	VQK	RPJ	LT	WU	ASM	FC	ED	HB	NO
J	ICNB	GQH	STO	YK	XM	PJF	DV	UE	RW	AL
K	IXUO	PGT	JCM	SL	EK	YRF	QA	VN	HD	WB
L	MFJG	VBW	RYX	HQ	KI	AUT	CL	PN	ED	SO
M	OETX	SAL	QIJ	DU	BV	GRP	YC	HK	NM	FW
N	BNYV	SUF	ICR	JT	KA	GME	QW	XH	PD	OL
O	ELBS	NIK	WAJ	TR	FC	XVU	GQ	DP	HM	YO
P	HXWO	KMJ	GTN	VY	BQ	SEP	UD	AR	IF	CL
Q	VRXU	NOK	TGL	PE	IW	FHD	YM	SB	QA	JC
R	DIVG	YBA	POT	JH	NC	LMR	QX	SK	WE	FU
S	GONC	BPD	LVW	SX	IF	QYU	MJ	KA	RE	HT
T	XKQR	WIV	CMJ	SB	OY	DUP	NF	HG	LE	TA
U	HEVO	KLM	XTW	PS	YR	NFD	QA	CB	GJ	UI
V	NECF	MQD	UPW	GO	SR	TVK	XL	HJ	YA	BI
W	SVRW	LFT	GOY	XC	BP	IDK	QA	UN	MH	EJ
X	NUHM	OAW	SQT	EC	LR	GFY	XB	PD	VK	JI
Y	EPDY	CHI	MAL	GX	NK	RTS	BF	WO	JV	UQ

NAVAIDS

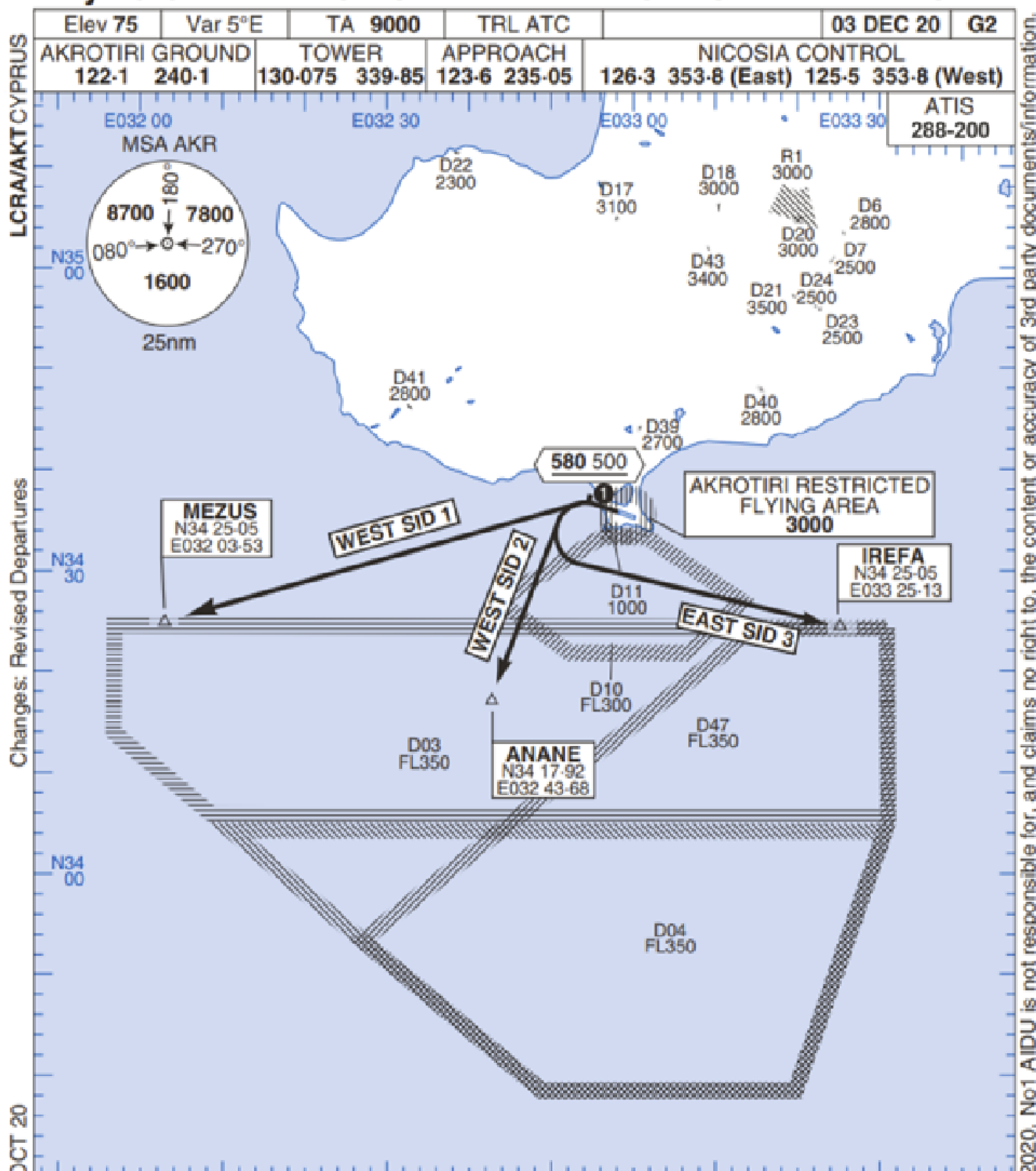
Id	Name	Channel	Position	Elevation
DAN	Incirlik	21	N37 00.950 E035 26.883	243
AKR	Akrotiri	107	N34 34.765 E032 57.769	147
PHA	Paphos	79	N34 42.997 E032 28.963	35
RMD	Ramat David	84	N32 39.892 E035 11.265	136
OS66	Kuweires Military Aviation Institute	36	N36 11.362 E037 34.226	1200

**FOR DCS
 USE ONLY**



ATIS	AKROTIRI GND	AKROTIRI TWR	OVERLORD CONTROL	TACAN	FIELD ELEVATION
288.20 MHz	240.10 122.10	339.85 130.075	377.8	AKR 107X	75 [ft] 23 [m]

Rwy 28 OMNIDIRECTIONAL DEPARTURES AKROTIRI



Changes: Revised Departures

No1 AIDU Last Amended 06 OCT 20

© UK MOD Crown Copyright 2020. No1 AIDU is not responsible for, and claims no right to, the content or accuracy of 3rd party documents/information.

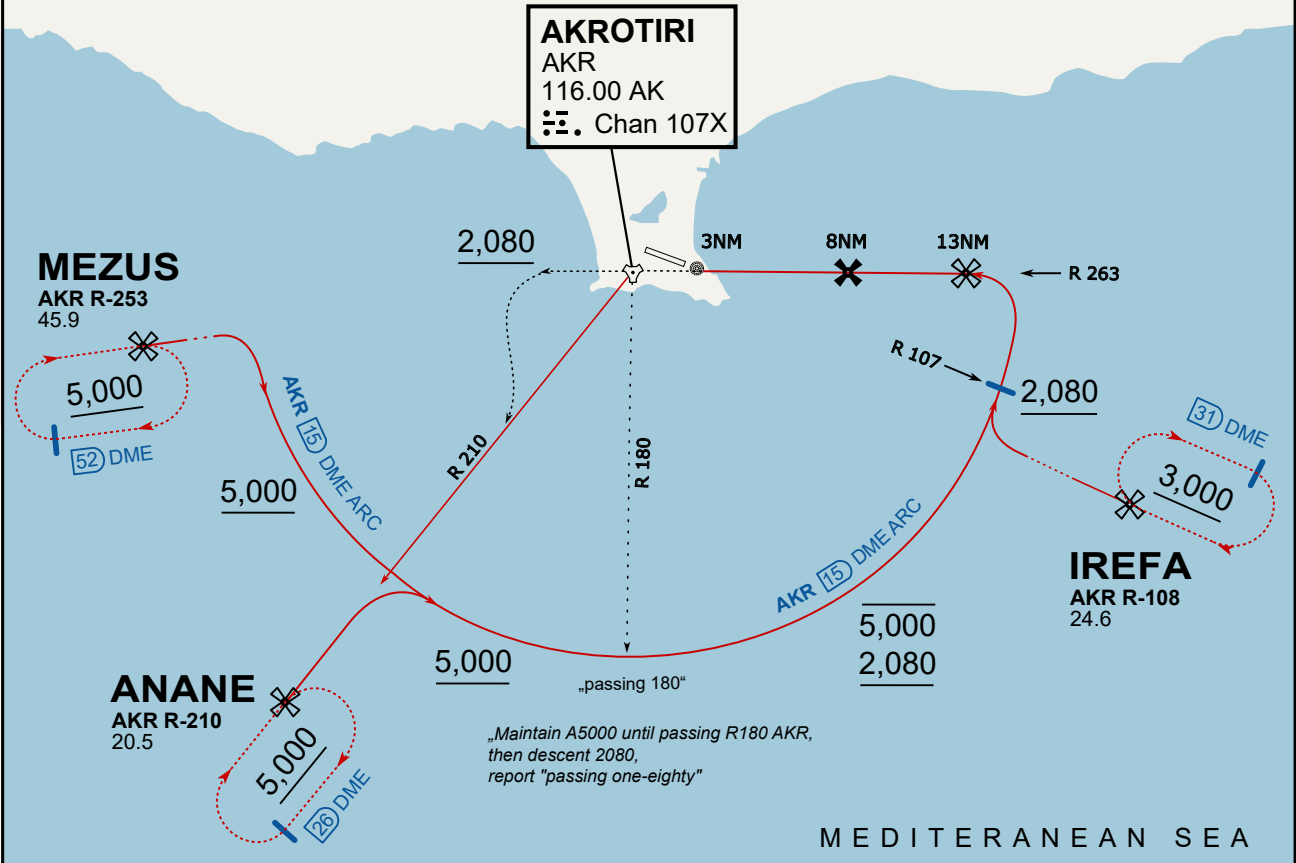
- 1. Minimum climb gradient 7% to 580 500 for obstacle and operational purposes.
- 2. No turns before DER.
- 3. Turns to north of Rwy prohibited.
- 4. Acft unable to locate MEZUS/ANANE/IREFA should request radar vectors from ATC.

SID	RWY	ROUTEING (Including Mnm Noise Routes)
WEST SID 1	28 283°M	Ahead on Rwy Tr to 580 500, turn left direct to MEZUS. SID terminates at 9000.
WEST SID 2		Ahead on Rwy Tr to 580 500, turn left direct to ANANE. SID terminates at 9000.
EAST SID 3		Ahead on Rwy Tr to 580 500, turn left direct to IREFA. SID terminates at 9000.

ATIS
288.200
AKROTIRI GROUND
122.100
AKROTIRI TOWER
339.850
APP (OVERLORD)
377.800

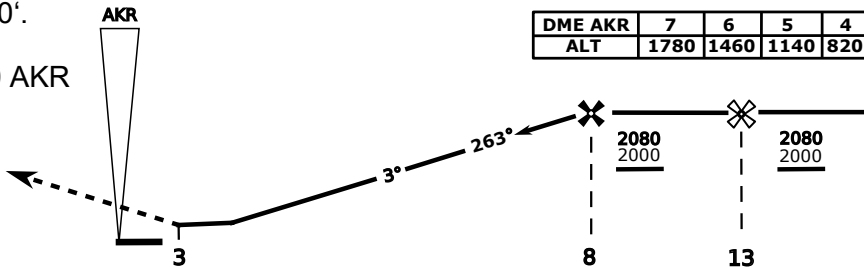
NOT FOR CIVIL USE

CAUTION: If unable to comply with restrictions advise ATC prior to departure.



On Track 263° climb A 4.000'.
passing 2.080' (2.000' AAL)
turn left and intercept R-210 AKR
to ANANE.
Enter ANANE Holding.

THR Elev 74ft DME AKR



CAT	TAC	CIRCLE	GS (kts)	80	120	150	180	210
A	500(430)	680 (610) 2000m	FAF - MAPt (4.1NM)	3:06	2:03	1:38	1:22	1:10
B	1300m		RoD (fpm)	420	640	800	950	1110
C	780 (710)	780 (710) 3300m	- CIRCLING PROHIBITED N of Rwy - final track is offset 20° right of RCL and Intcp 1.1NM before THR - when established on final contact tower - Timing not Auth to define MAPt					
D	2600m	780 (710) 3600m						
E	1380 (1310)	1380 (1310) 5000m						
	5000m							

