

MISSION DATA CARD

OPORD		Callsign		Mission		Date/Time	
1457/2023		Vanguard 1		Training		022015JAN23	
Task						Freq	
AO						264.55	
Departure				Recovery			
CAT				CASE I			
#	Callsign	Pilot		IFF	TCN	LSR	NET
-1	Vanguard 1-1	Herby		3311	21Y	1561	

LOADOUT

A/A	2xA9M				GUN	100% none	
A/G	6xG38				CHF	60	
POD	TGP				FLR	120	
TKS					FUEL	100%	

TOLD

	Takeoff	Target	Joker	Bingo	Land
FUEL	7758				

AIRBASES

	Name	TCN	ATIS	GND	TWR	RWY	Elev	ILS
Dep	LHA-1 Tarawa	85X			302.0			
Arr	LHA-1 Tarawa	85X			302.0			
Div	Akrotiri AFB	107X	288.2	240.1	339.85	28	62	109.7

FLIGHTPLAN

#	Name	Navaid/Coords/DME	ALT	TOT
1	AAR	N34 24 E034 03	15000	
2	ENTRY	N35 56 01.601 E035 19 10.682	22000	
3	TAREA	N36 23 03.632 E036 36 10.663	11000	
4	EXIT	N36 18 10.176 E035 46 52.395	32000	
5	DESCENT	N34 41 01.038 E032 51 24.959	32000	

NOTES

TEXACO2 244.800

SUPPORT**Tanker**

Callsign	TCN	Freq	ALT	TAS
ARCO 2	41Y	360.8	FL220	400
	Pos	ARCO2: (N3653 E03452)		
TEXACO 2	44Y	244.78	FL150	250
	Pos	TEXACO2: (N3424 E03403)		

AWACS

Callsign	Freq	ALT	Pos
OVERLORD2	377.8	FL320	N3713 E03643 - N3714 E03749

RADIO CHANNELS

#	Freq	Name
1		Flight/Squadron specific
2	288.2	Akrotiri ATIS
3	240.1	Akrotiri Ground
4	339.85	Aktrotiri Tower
5	335.05	Akrotiri Approach
6	360.1	Incirlik Tower
7	371.35	Incirlik Ground
8	377.475	Incirlik ATIS
9		No Preset
10	127.3	Paphos ATIS
11	353.8	Paphos Tower
12	304.0	CVN-73 George Washington
13	302.0	LHA-1 Tarawa
14	259.0	CV-59 Forrestal
15		No Preset
16	377.8	Overlord
17	265.0	KC-135 Texaco-1 medium/slow
18	319.8	KC-135 Arco-1
19	360.8	KC-135MPRS Arco-2
20	256.0	S-3B Recovery Tanker

RAMROD

0	1	2	3	4	5	6	7	8	9
I	N	C	U	L	P	A	T	E	D

KTC 1400 C

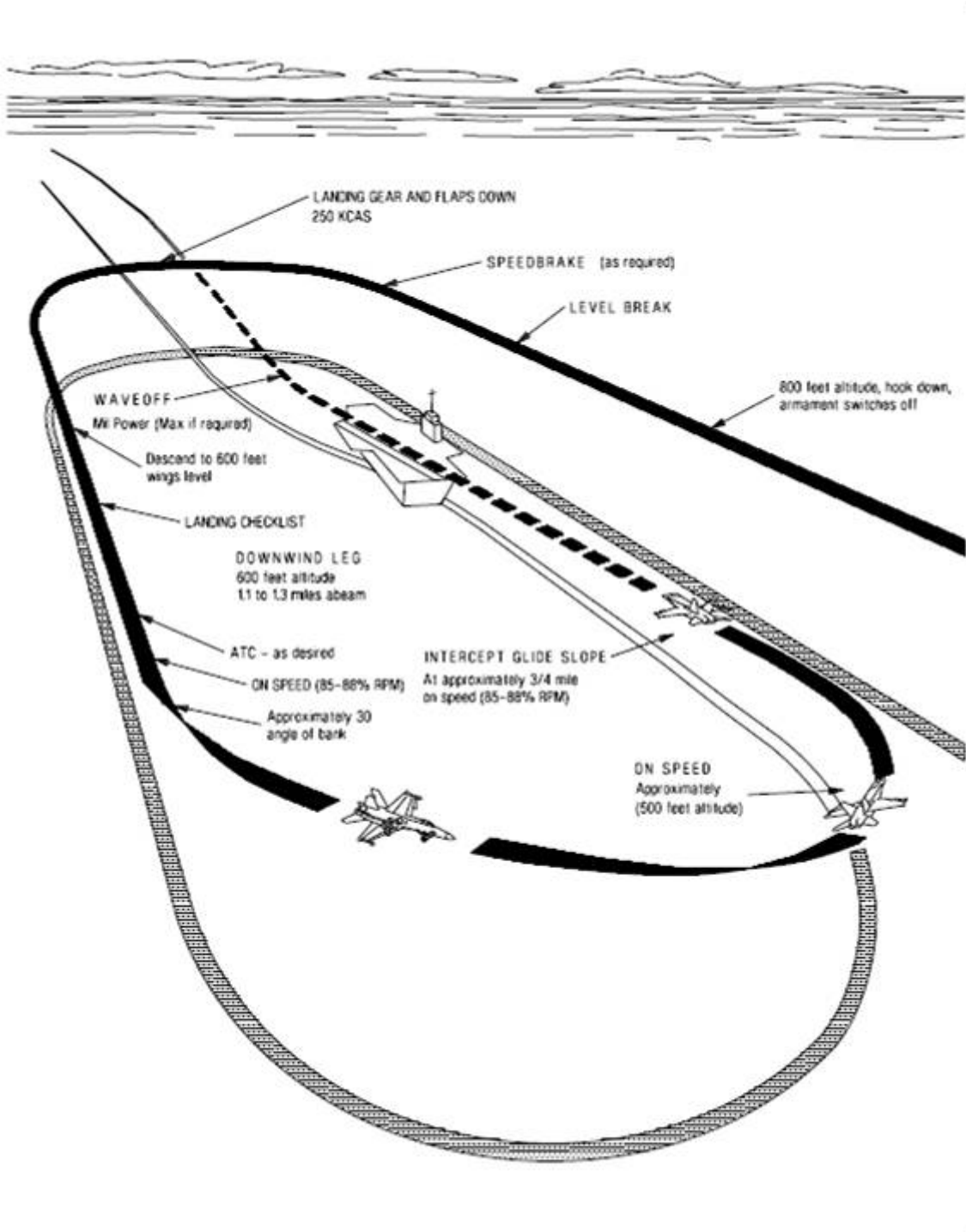
	0	1	2	3	4	5	6	7	8	9
A	GCYN	QRA	KMH	WB	JV	STF	OD	EP	IU	LX
B	GRDC	LXP	HVM	JY	QI	FEB	UN	WS	KT	AO
C	LUAY	WVI	PQX	DK	TH	GMJ	BO	NS	FR	CE
D	FHWG	PMR	NKO	XT	JB	VEC	SY	UA	LQ	DI
E	NIUS	PCY	KJT	QV	HL	DFW	GX	ER	AB	OM
F	QECH	RAF	NIW	BP	YL	OUM	XD	JT	VK	GS
G	CWAK	RVH	YNU	TS	MJ	BGE	XO	DI	QP	FL
H	MHRV	LBP	UJS	TI	EO	QFC	XA	GK	NY	WD
I	MRUX	FEK	PWY	JV	AN	TLG	HC	IQ	DS	OB
J	UNPS	COL	QTK	JX	GE	MFW	AH	VD	IB	YR
K	NSOA	WGT	DPI	EX	UR	YFJ	KH	VM	CQ	LB
L	IXKF	VYQ	OHR	DM	EC	TNB	UP	WS	LJ	AG
M	XRVJ	OUQ	YCE	PB	KT	MDH	SG	LI	NA	FW
N	TUNY	FXW	PVM	KR	IH	GCJ	QO	LB	AE	DS
O	VLNB	YDA	PJW	UT	EX	HCI	OS	QR	GF	MK
P	HEVM	JTY	CPD	GQ	WI	ROX	UK	NA	BF	LS
Q	LGUH	SDX	JFB	NR	PM	VTQ	YE	AK	IO	WC
R	AISV	EYK	OXW	CB	PD	TFL	UH	RQ	GN	JM
S	SWNX	HKD	PRY	JQ	FV	UAI	MO	EB	GT	CL
T	WLRB	CQD	FVA	UX	MT	OSI	NJ	EP	GK	HY
U	LSXF	KCJ	GWQ	PD	YR	UBT	ME	AI	VH	ON
V	OCYF	AHU	WIJ	TL	DR	QXE	KM	PS	VG	BN
W	MXIK	ETA	HVF	YS	PU	DBO	RJ	QC	WG	LN
X	RQVU	LHB	DCX	WK	TS	FAI	OM	YE	JG	PN
Y	ULHP	RJD	NVE	OB	TS	FCX	WQ	GA	YI	KM

NAVAIDS

Id	Name	Channel	Position	Elevation
DAN	Incirlik	21	N37 00.950 E035 26.883	243
AKR	Akrotiri	107	N34 34.765 E032 57.769	147
PHA	Paphos	79	N34 42.997 E032 28.963	35
RMD	Ramat David	84	N32 39.892 E035 11.265	136
OS66	Kuweires Military Aviation Institute	36	N36 11.362 E037 34.226	1200



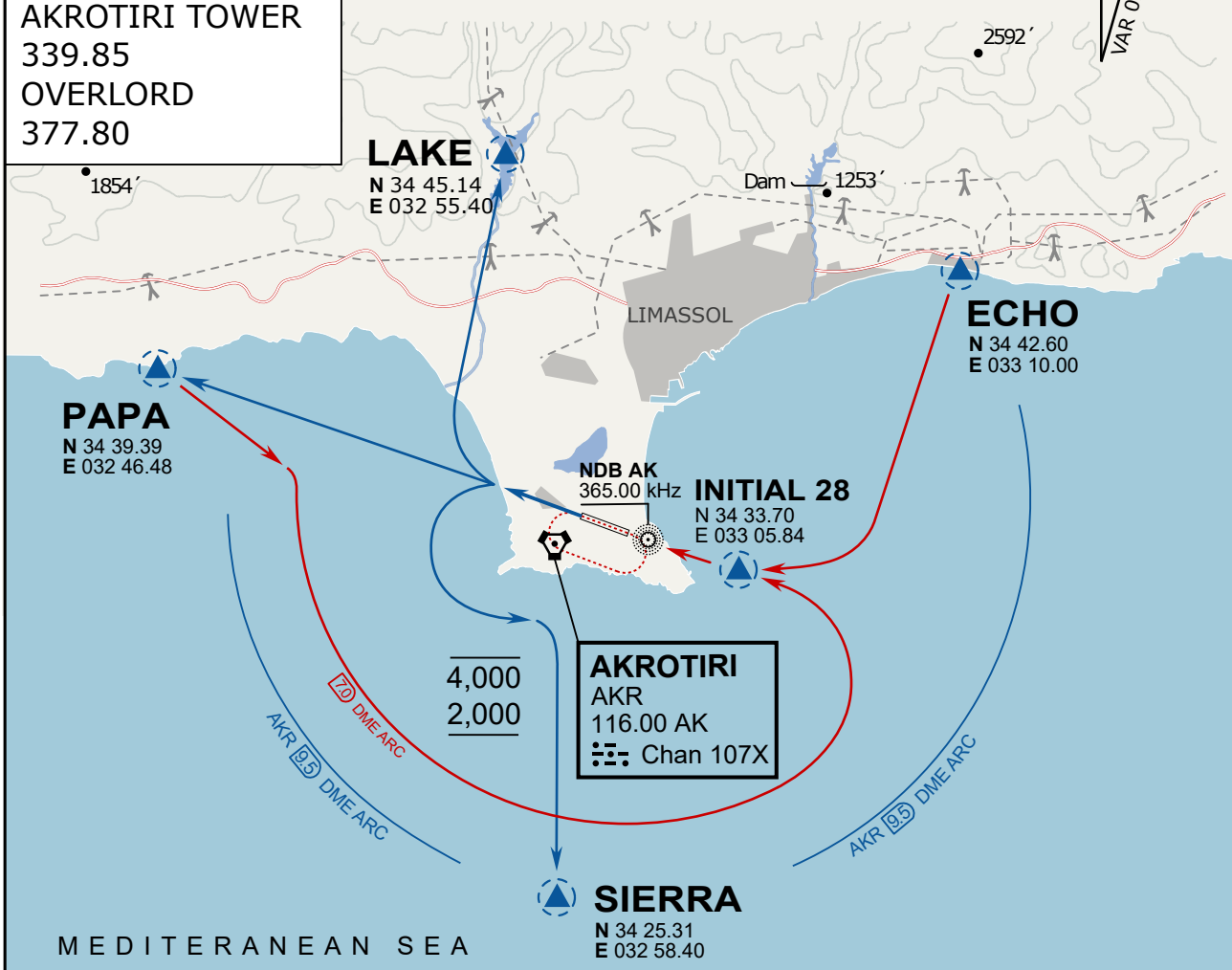




ATIS
 288.20
AKROTIRI GROUND
 240.10
AKROTIRI TOWER
 339.85
OVERLORD
 377.80

NOT FOR CIVIL USE

CAUTION: If unable to comply
 with restrictions advise ATC
 prior to departure.



ARR / DEP ROUTE DESCRIPTION

STRAIGHT-IN RWY28

Pass ENTRY at 5.000' MSL or below, pass INITIAL at 1.500' MSL or below.

OVERHEAD BREAK RWY28

Pass ENTRY at 5.000' MSL or below, pass INITIAL at 2.000' MSL, break to the south.

DEPARTURE GENERAL

Pass Departure end of runway at 1.000' or below.

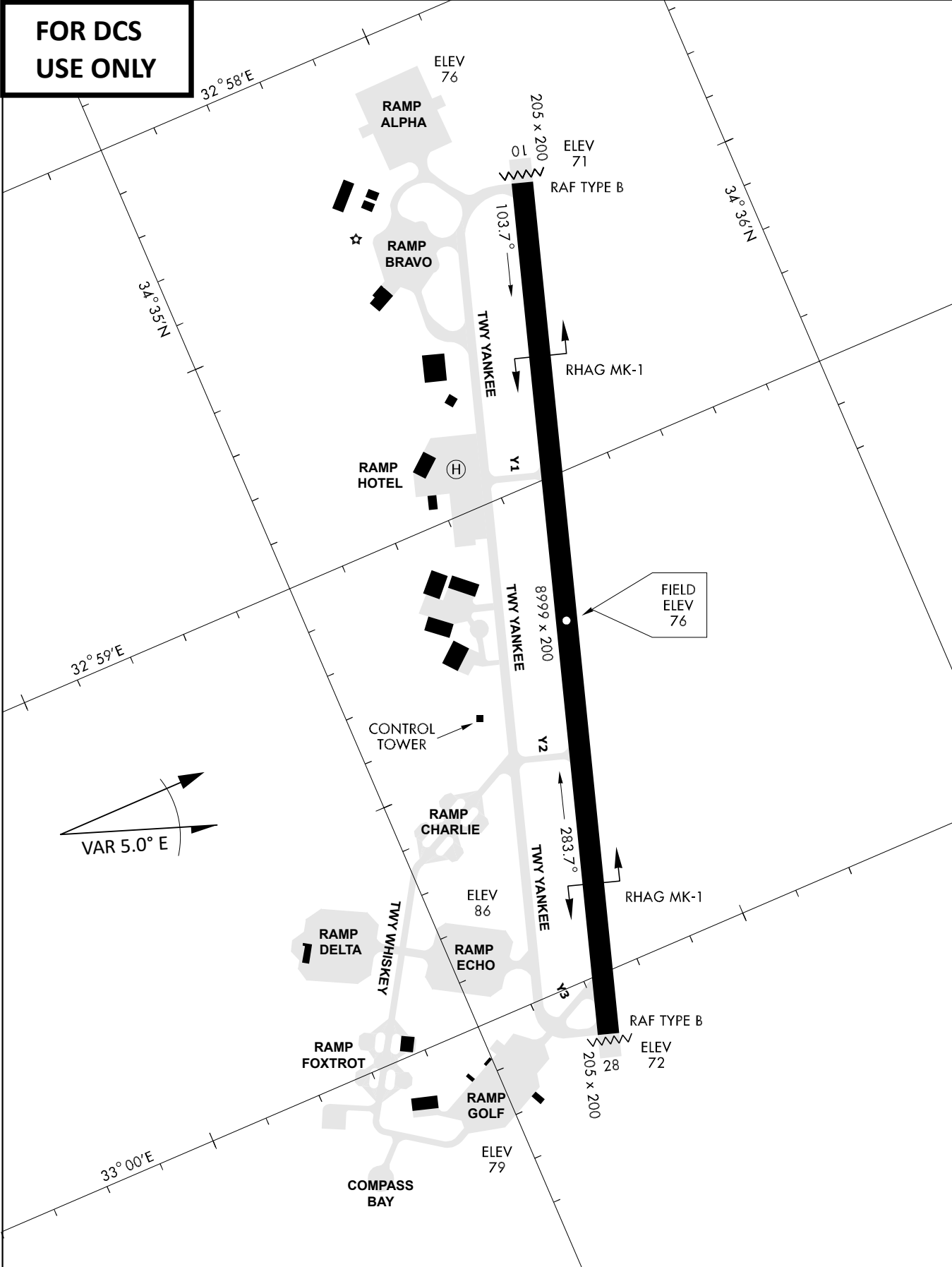
DEP RWY28 PAPA: Fly straight ahead to exit.

DEP RWY28 LAKE: Fly straight ahead until coast, than right turn direct exit.

DEP RWY28 SIERRA: Fly straight ahead until coastline, then climbing left turn, intercept AKR R-180 to exit.

DEP ECHO: no exit.

**FOR DCS
 USE ONLY**



ATIS	AKROTIRI GND	AKROTIRI TWR	OVERLORD CONTROL	TACAN	FIELD ELEVATION
288.20 MHz	240.10 122.10	339.85 130.075	377.8	AKR 107X	75 [ft] 23 [m]