

MISSION DATA CARD

OPORD		Callsign		Mission		Date/Time		
1438/2022		Axe 2		Training		052000DEC22		
Task	evasive action					Freq		
AO	Insurgent Town easy u hard cold					133.5		
Departure				Recovery				
Helicopter VFR				Helicopter VFR				
#	Callsign		Pilot		IFF	TCN	LSR	NET
-1	Axe 2-1		Hazel/Mütze		2021	21Y	1561	
-2	Axe 2-2		Warblade/Hudson		2022	84Y	1562	

LOADOUT

A/A		GUN	100% HEDP
A/G		CHF	30
POD		FLR	60
TKS		FUEL	75%

TOLD

	Takeoff	Target	Joker	Bingo	Land
FUEL	2377				

AIRBASES

	Name	TCN	ATIS	GND	TWR	RWY	Elev	ILS
Dep	Akrotiri AFB	107X	288.2	240.1	339.85	28	62	109.7
Arr	Akrotiri AFB	107X	288.2	240.1	339.85	28	62	109.7

FLIGHTPLAN

#	Name	Navaid/Coords/DME	ALT	TOT
1	LAKE	N34 45.060 E032 55.290		

COMMS

Radio	Usage
1	133.50
2	339.85 / 377.8

OTHER FLIGHTS

Callsign	Mission	Airframe	Freq	TCN	Grpld	Laser
Tiger 1	Training	4x F/A-18C	261.15	21/84	1	156X
AO	BVR Area	Task	BVR			
Panther 3	Training	3x F/A-18C	261.75	31/94		157X
AO	W of NFZ	Task	sim ATO501-PKG-A-Fuel consumptn+CQ Training			
Raptor 1	Training	4x F-16C	134.0	21/84		156X
AO	Akamas bomb Range	Task	Sensor Share Training			
Edelweiss 6	Training	2x A-10C	136.0	21/84	40	156X
AO	Bomb Circles	Task	Gun Delpolyment			

RADIO CHANNELS

#	Freq	Name
1		Flight/Squadron specific
2	288.2	Akrotiri ATIS
3	240.1	Akrotiri Ground
4	339.85	Aktrotiri Tower
5	335.05	Akrotiri Approach
6	360.1	Incirlik Tower
7	371.35	Incirlik Ground
8	377.475	Incirlik ATIS
9		No Preset
10	127.3	Paphos ATIS
11	353.8	Paphos Tower
12	304.0	CVN-73 George Washington
13	302.0	LHA-1 Tarawa
14	259.0	CV-59 Forrestal
15		No Preset
16	377.8	Overlord
17	265.0	KC-135 Texaco-1 medium/slow
18	319.8	KC-135 Arco-1
19	360.8	KC-135MPRS Arco-2
20	256.0	S-3B Recovery Tanker

RAMROD

0	1	2	3	4	5	6	7	8	9
S	T	O	M	A	C	H	I	N	G

KTC 1400 C

	0	1	2	3	4	5	6	7	8	9
A	GUCE	TWY	BMH	LD	SO	KQI	FN	RV	AJ	XP
B	QBMN	YGW	JSX	OP	DI	RLT	CK	VE	FA	UH
C	UEBQ	MOD	LPY	FN	RS	CHV	GW	XA	TK	JI
D	ONEM	SFG	CTD	HY	RK	XWI	BL	JV	AP	UQ
E	HXRV	FUN	QKO	MC	TA	GPW	SB	JD	YL	IE
F	NOBF	EXS	MKU	IC	PD	AGH	WQ	YV	LT	JR
G	HKNY	JVC	REL	WS	OD	GIM	QP	BX	AF	UT
H	STRV	OAK	JWH	EM	IF	PLY	BQ	UD	XG	NC
I	ALOV	XIS	RTM	UB	KE	DYP	FN	GJ	QH	WC
J	SKXY	RFO	IUP	GC	WV	LTM	QD	AJ	NH	BE
K	FBPV	GUX	SEH	IN	WM	DJK	QY	CT	RO	AL
L	JOBG	LES	PNV	RK	AU	DTC	YI	FW	HM	QX
M	JIWV	PXN	HAT	YE	DL	UFR	QO	BM	CK	GS
N	AFPB	TWG	NXV	HD	CS	IQO	EL	KY	JR	UM
O	TBDU	XMP	JRV	GL	YA	QOF	CE	NI	SK	HW
P	KDUQ	SPO	BRH	XG	CV	ATY	MN	WE	JL	FI
Q	XCRH	QDM	OKP	NF	BL	TSU	WA	IV	EJ	GY
R	JWIK	ESD	AUP	BM	VR	HTN	OQ	YX	CG	LF
S	MAOF	HIB	WKT	RJ	SE	YPV	ND	QU	CG	XL
T	VEKR	XMB	HGN	OA	WS	YUJ	FQ	DC	PT	LI
U	WBGX	FCV	IAM	QS	LT	JKN	PE	DU	HR	OY
V	PGVQ	SCF	WXA	DJ	UY	MHT	OI	LB	EK	NR
W	VQFW	DRG	NJP	OE	XH	AKS	LY	MC	BU	IT
X	DCLP	IFW	TAH	OS	BG	YKQ	VJ	UM	XE	NR
Y	UXSE	OFQ	DWK	HG	JR	NYA	VP	MI	TB	LC

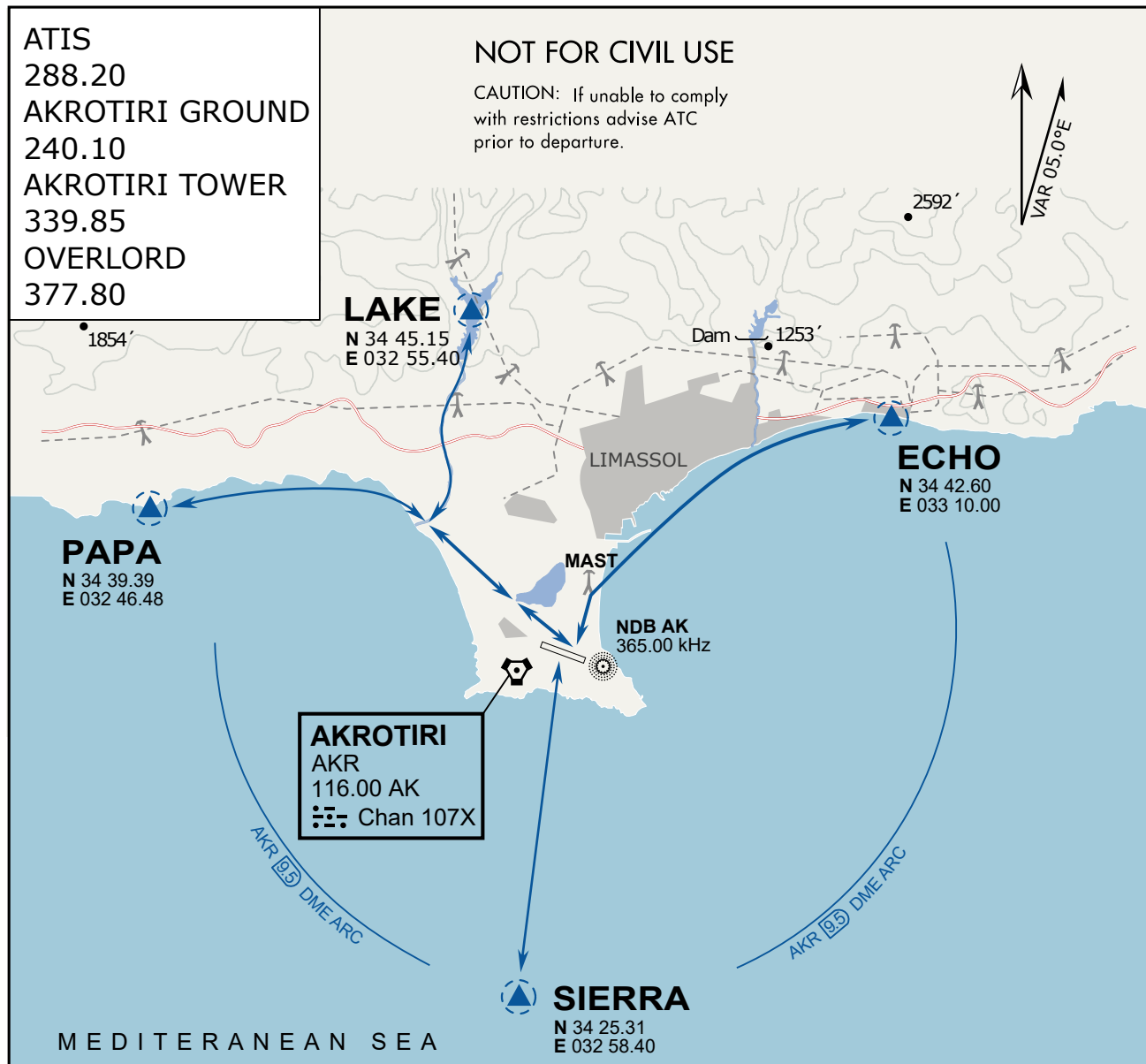
NAVAIDS

Id	Name	Channel	Position	Elevation
DAN	Incirlik	21	N37 00.950 E035 26.883	243
AKR	Akrotiri	107	N34 34.765 E032 57.769	147
PHA	Paphos	79	N34 42.997 E032 28.963	35
RMD	Ramat David	84	N32 39.892 E035 11.265	136

**FOR DCS
 USE ONLY**



ATIS	AKROTIRI GND	AKROTIRI TWR	OVERLORD CONTROL	TACAN	FIELD ELEVATION
288.20 MHz	240.10 122.10	339.85 130.075	377.8	AKR 107X	75 [ft] 23 [m]



ARR / DEP ROUTE DESCRIPTION

GENERAL

Stay at or below 500' AGL.

DEPARTURE

ECHO: Via the 4 masts, along the coastline to EXIT.

LAKE: Stay SOUTH WEST of the dry lake, to the river mouth, follow river to EXIT.

PAPA: Stay SOUTH WEST of the dry lake, follow coastline to EXIT.

SIERRA: Direct EXIT.

ARRIVAL

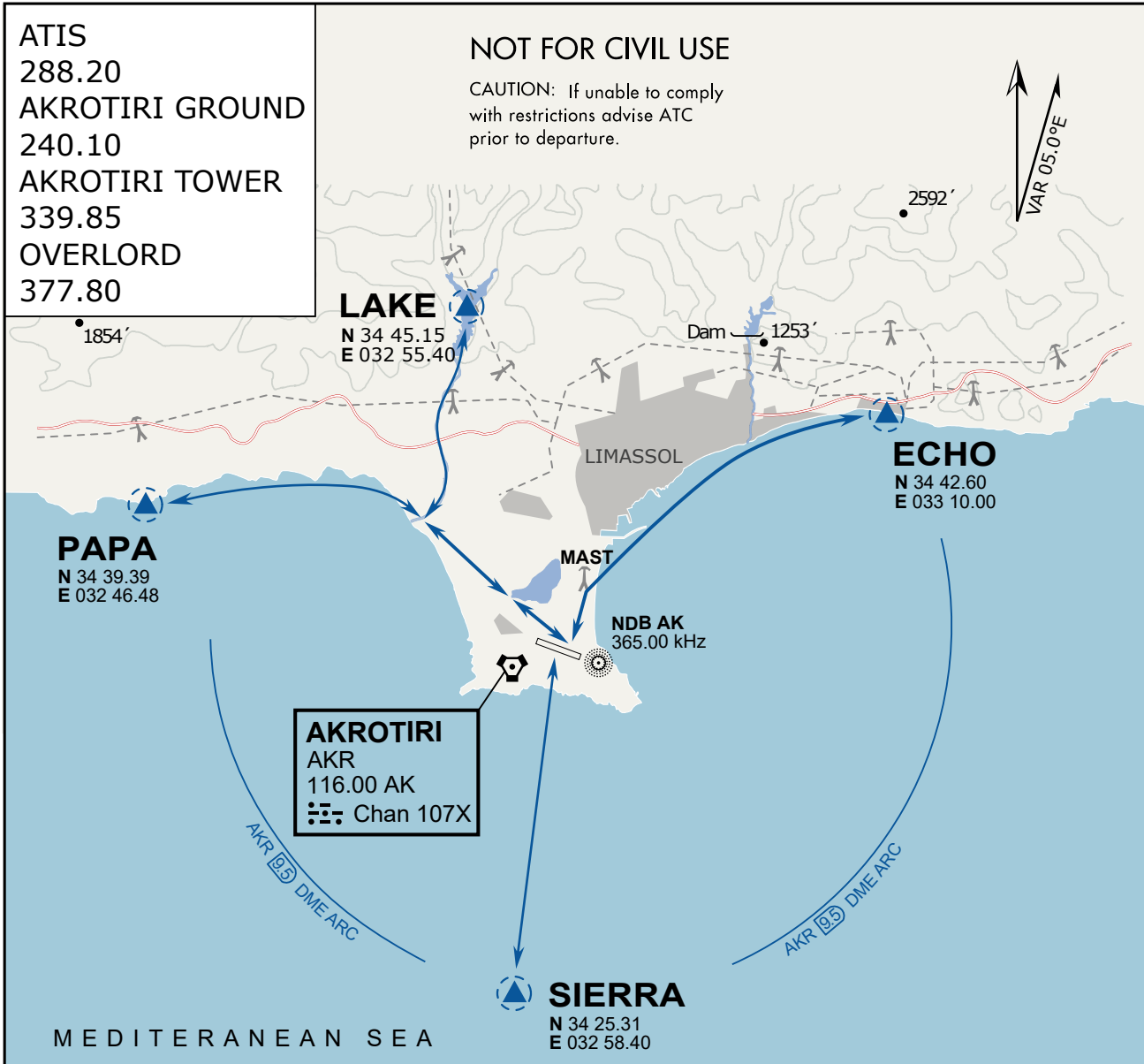
LAKE: Follow river to coastline, then direct LCRA.

PAPA: Follow coastline to rivermouth, then direct LCRA.

ECHO: Follow coastline to the 4 masts, then to LCRA.

SIERRA: Direct to LCRA.





ARR / DEP ROUTE DESCRIPTION

GENERAL

Stay at or below 500' AGL.

DEPARTURE

- ECHO: Via the 4 masts, along the coastline to EXIT.
- LAKE: Stay SOUTH WEST of the dry lake, to the river mouth, follow river to EXIT.
- PAPA: Stay SOUTH WEST of the dry lake, follow coastline to EXIT.
- SIERRA: Direct EXIT.

ARRIVAL

- LAKE: Follow river to coastline, then direct LCRA.
- PAPA: Follow coastline to rivermouth, then direct LCRA.
- ECHO: Follow coastline to the 4 masts, then to LCRA.
- SIERRA: Direct to LCRA.