

MISSION DATA CARD

OPORD		Callsign		Mission		Date/Time	
1409/2022		Monster 1		Training		282030NOV22	
Task	Dumb Bomb training					Freq	
AO	Cape Pyla Bomb Range Circle 1					132.15	
Departure				Recovery			
RWY10 VFR				RWY10 VFR			
#	Callsign	Pilot		IFF	TCN	LSR	NET
-1	Monster 1-1	Crusader		1441	21Y	1661	21/01
-2	Monster 1-2	Toolface		1442	84Y	1662	21/02
-3	Monster 1-3	Florida		1443	84X	1663	21/03
-4	Monster 1-4	Lenzi		1444	21X	1664	21/04

LOADOUT

A/A	2xA9M				GUN	100% CM
A/G	7xM82, 7M156				CHF	120
POD	TGP, A184				FLR	360
TKS					FUEL	81%

TOLD

	Takeoff	Target	Joker	Bingo	Land
FUEL	8980				

AIRBASES

	Name	TCN	ATIS	GND	TWR	RWY	Elev	ILS
Dep	Akrotiri AFB	107X	288.2	240.1	339.85	28	62	109.7
Arr	Akrotiri AFB	107X	288.2	240.1	339.85	28	62	109.7

FLIGHTPLAN

#	Name	Navaid/Coords/DME	ALT	TOT
1	ECHO	N34 41.470 E033 09.060		
2	MEZUS	N34 25.109 E032 03.519	4000	
3	BOMBCIRCLE 1	N34 56.924 E033 51.867	146	
4	LAKE	N34 45.060 E032 55.290		

COMMS

Radio	Usage
1	132.15
2	2-4-16-4
3	32.00

OTHER FLIGHTS

Callsign	Mission	Airframe	Freq	TCN	Grpld	Laser
Rattler 1	Training	2x AH-64D	133.5	21/84		156X
AO	Insurgent Town deactive	Task				
Tiger 1	Training	4x F/A-18C	261.15	21/84	1	156X
AO	SA-11 TRAINING SITE aktiv	Task	DEAD SA 11			
Edelweiss 1	Training	4x F/A-18C	261.25	21/84		156X
AO		Task	Snap Shot Drill			
Vanguard 1	Training	1x AV-8B N/A	264.55	21/84		163X
AO	AKAMAS BOMBING RANGE	Task	Bombing Training			
Panther 7	Training	4x F/A-18C	261.25	21/84		156X
AO	SA-11 TRAINING SITE aktiv	Task	DEAD SA 11			
Cougar 5	Training	2x F-14B	261.25	21/84		156X
AO		Task				

RADIO CHANNELS

#	Freq	Name
1		Flight/Squadron specific
2	288.2	Akrotiri ATIS
3	240.1	Akrotiri Ground
4	339.85	Aktrotiri Tower
5	335.05	Akrotiri Approach
6	360.1	Incirlik Tower
7	371.35	Incirlik Ground
8	377.475	Incirlik ATIS
9		No Preset
10	127.3	Paphos ATIS
11	353.8	Paphos Tower
12	304.0	CVN-73 George Washington
13	302.0	LHA-1 Tarawa
14	259.0	CV-59 Forrestal
15		No Preset
16	377.8	Overlord
17	265.0	KC-135 Texaco-1 medium/slow
18	319.8	KC-135 Arco-1
19	360.8	KC-135MPRS Arco-2
20	256.0	S-3B Recovery Tanker

RAMROD

0	1	2	3	4	5	6	7	8	9
J	O	U	R	N	A	L	I	S	M

KTC 1400 C

	0	1	2	3	4	5	6	7	8	9
A	EHTY	JUD	NVQ	MF	PI	OWA	XK	SC	LG	RB
B	LOUX	MJF	SWV	DG	HQ	AKB	TR	IN	CY	EP
C	UPWX	SNA	YIQ	KH	BC	MGT	JL	OE	DV	FR
D	AMTI	UKC	VYN	OQ	BF	GWH	EP	JD	SR	XL
E	LEGK	XNC	JPO	BW	YT	SFA	IV	RH	MQ	DU
F	LTSD	CGQ	UNK	MV	OR	FYA	JX	PW	EH	BI
G	FCSA	EIN	MXV	DR	OU	LJB	PH	QY	WT	KG
H	SIGC	HNE	FRD	PY	VT	XBQ	MO	AL	KW	UJ
I	AFHE	SQT	JIC	RB	YM	WPO	XG	KU	DN	LV
J	RQWK	VHC	TYN	EL	AD	OBG	IS	MU	JX	FP
K	MAWO	BXN	LST	YU	IQ	VJK	FE	PH	GD	RC
L	CPEF	OWI	DHK	QA	YN	STJ	MX	GB	UV	LR
M	PLKQ	GNO	CWR	BX	YE	HFI	VD	MA	TU	SJ
N	JXKV	FMU	YIW	NH	GB	LDT	QE	PO	SC	RA
O	MFKT	YSE	LQH	PA	CN	DXW	IU	JG	OR	VB
P	LKGF	MWX	IJD	SB	VY	PRT	OH	NQ	CA	UE
Q	MJSK	XUY	ALH	VD	NC	GOT	WI	FQ	PE	RB
R	KYIE	XWS	ORB	PU	TJ	AVC	FM	NQ	LD	GH
S	SFHT	AOE	RBI	XJ	MG	DPY	KC	NU	VL	WQ
T	RIKQ	HCV	DGX	BO	JA	TEW	MP	FY	UN	LS
U	RBOE	FJC	SND	XM	AQ	IYW	LP	KU	HG	TV
V	LRGD	IXO	ATQ	JM	UE	PVH	NK	CF	WB	SY
W	KEWS	IBR	UDQ	PV	JX	YLG	CM	HT	NA	OF
X	XPGD	RVU	KIM	AF	EO	TBY	JL	HQ	SC	WN
Y	EHVY	OPS	DAK	BU	XI	GQC	WR	TN	LF	JM

NAVAIDS

Id	Name	Channel	Position	Elevation
DAN	Incirlik	21	N37 00.950 E035 26.883	243
AKR	Akrotiri	107	N34 34.765 E032 57.769	147
PHA	Paphos	79	N34 42.997 E032 28.963	35
RMD	Ramat David	84	N32 39.892 E035 11.265	136

**FOR DCS
 USE ONLY**



ATIS	AKROTIRI GND	AKROTIRI TWR	OVERLORD CONTROL	TACAN	FIELD ELEVATION
288.20 MHz	240.10 122.10	339.85 130.075	377.8	AKR 107X	75 [ft] 23 [m]

ATIS

288.20

AKROTIRI GROUND

240.10

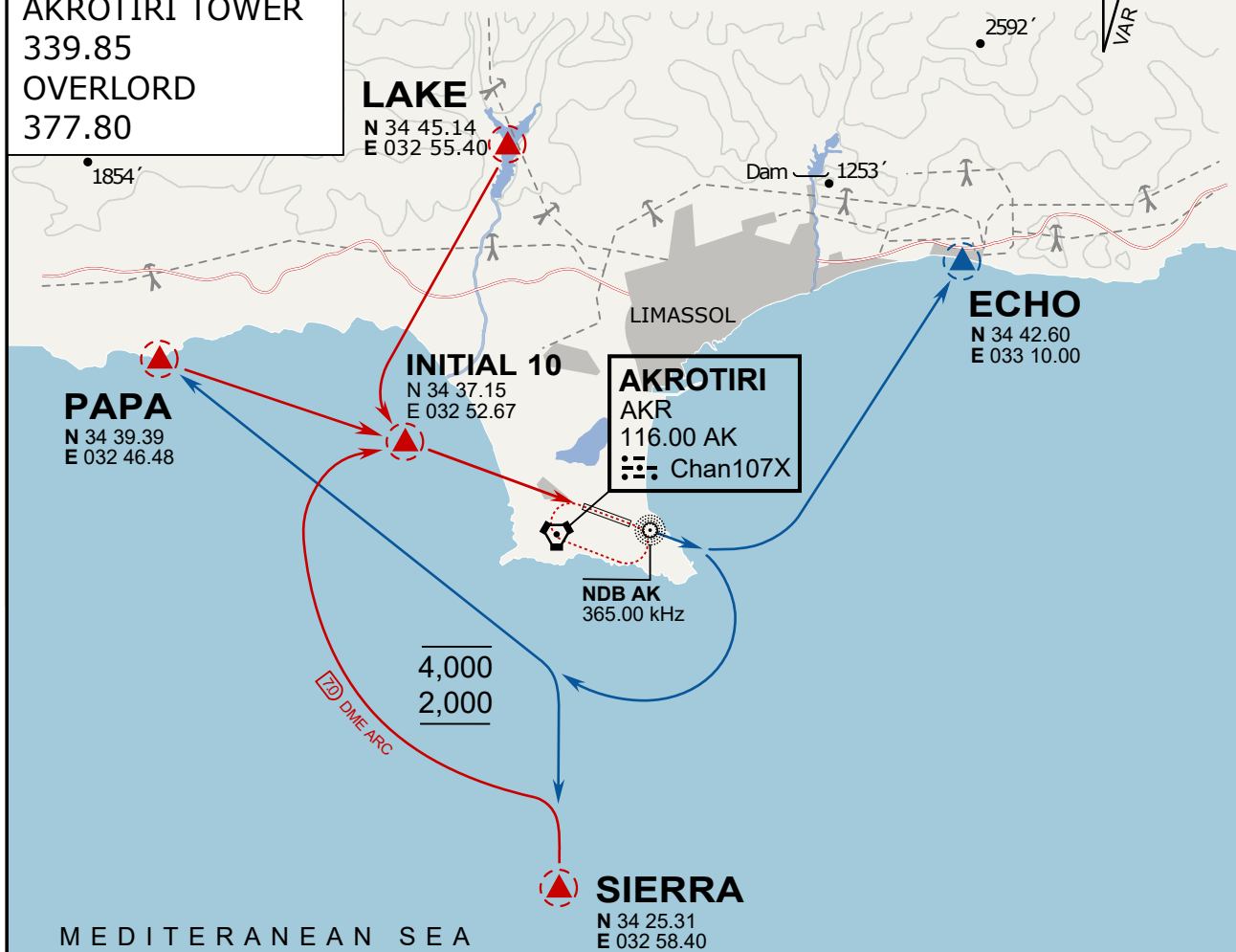
AKROTIRI TOWER

339.85

OVERLORD

377.80

NOT FOR CIVIL USE

CAUTION: If unable to comply
with restrictions advise ATC
prior to departure.

MEDITERRANEAN SEA

ARR / DEP ROUTE DESCRIPTION

ARRIVAL GENERAL

Pass Entry at 5.000' or below. Overhead Brake RWY 10: pass INITIAL 10 at 2.000' MSL.
Straight-in RWY 10 : pass INITIAL 1.500' or below.

ARR RWY10 PAPA / LAKE: Direct initial.

ARR RWY10 SIERRA: Intercept ARC 7 of AKR to INITIAL 10.

ARR ECHO: no ENTRY.

DEPARTURE GENERAL

Pass Departure end of runway at 1.000' AGL or below. Keep RWY heading until coastline.

DEP RWY10 ECHO: Direct EXIT.

DEP RWY10 SIERRA: Climbing right turn, intercept R180 AKR to Sierra.

DEP RWY10 PAPA: Climbing right turn until R180 AKR, then direct Papa

DEP LAKE: no EXIT.

ATIS

288.20

AKROTIRI GROUND

240.10

AKROTIRI TOWER

339.85

OVERLORD

377.80

NOT FOR CIVIL USE

CAUTION: If unable to comply
with restrictions advise ATC
prior to departure.

ARR / DEP ROUTE DESCRIPTION

ARRIVAL GENERAL

Pass Entry at 5.000' or below. Overhead Brake RWY 10: pass INITIAL 10 at 2.000' MSL.
Straight-in RWY 10 : pass INITIAL 1.500' or below.

ARR RWY10 PAPA / LAKE: Direct initial.

ARR RWY10 SIERRA: Intercept ARC 7 of AKR to INITIAL 10.

ARR ECHO: no ENTRY.

DEPARTURE GENERAL

Pass Departure end of runway at 1.000' AGL or below. Keep RWY heading until coastline.

DEP RWY10 ECHO: Direct EXIT.

DEP RWY10 SIERRA: Climbing right turn, intercept R180 AKR to Sierra.

DEP RWY10 PAPA: Climbing right turn until R180 AKR, then direct Papa

DEP LAKE: no EXIT.