

MISSION DATA CARD

OPORD		Callsign		Mission		Date/Time		
1383/2022		T-Rex 2		Training		142000NOV22		
Task	ILS Training Flight					Freq		
AO	Akrotiri -> Incirlik					132.25		
Departure				Recovery				
RWY28 SID				VFR				
#	Callsign		Pilot		IFF	TCN	LSR	NET
-1	T-Rex 2-1		Marsy		1551	21Y	1561	25/01
-2	T-Rex 2-2		Crusader		1552	84Y	1562	25/02
-3	T-Rex 2-3		Toolface		1553	84X	1563	25/03

LOADOUT

A/A	A9M				GUN	100% CM	
A/G	7M282L				CHF	240	
POD	TGP, A184				FLR	240	
TKS					FUEL	100%	

TOLD

	Takeoff	Target	Joker	Bingo	Land
FUEL	11087			2000	

AIRBASES

	Name	TCN	ATIS	GND	TWR	RWY	Elev	ILS
Dep	Akrotiri AFB	107X	288.2	240.1	339.85	28	62	109.7
Arr	Incirlik AFB	21X	377.47 5	371.35	360.1	5	190	
Div	Akrotiri AFB	107X	288.2	240.1	339.85	28	62	109.7

FLIGHTPLAN

#	Name	Navaid/Coords/DME	ALT	TOT
1	ANANE	N34 18.048 E032 43.619	9000	
2	GENOS	N34 40.779 E031 54.080	12000	
3	VADUS	N35 18.565 E032 03.767	12000	
4	BAPAX	N35 42.099 E034 10.419	12000	
5	TARSU	N36 37.549 E034 31.208	12000	
6	MILBA	N36 57.198 E036 28.672	12000	
7	Holding	DAN 235/20	12000	

COMMS

Radio	Usage
1	132.25
2	2-4-16-8-7-6
3	32.00

OTHER FLIGHTS

Callsign	Mission	Airframe	Freq	TCN	Grpld	Laser
Edelweiss 6	Training	2x A-10C	134.65	21/84	40	166X
AO	Akrotiri -> Incirlik	Task	ILS Training Flight			
Beast 4	Training	4x AH-64D	133.5	21/84		156X
AO	CAS Range spawn only	Task				
Tiger 2	Training	4x F/A-18C	261.15	21/84	1	156X
AO	Eastern Med	Task	Test			
Tiger 7	Training	4x F/A-18C	261.15	21/84		156X
AO	Gecitkale Airport Range Spawn	Task	AGM 84H Slam er			
Raptor 1	Training	4x F-16C	134.0	21/84		156X
AO	Akamas Bombing Range	Task	Maverick Training - Akamas Bomb Range			
Edelweiss 1	Training	4x F/A-18C	261.25	21/84		156X
AO	BVR Range	Task	BVR Fox3			
Cougar 1	Training	4x F-14B	261.25	21/84		156X
AO		Task	IFR Trainin			
Edelweiss 1	Training	4x F/A-18C	261.25	21/84		156X
AO	BVR Range	Task	BVR Fox3			
Monster 1	Training	2x A-10C	132.15	21/84	21	161X
AO	Akrotiri -> Incirlik	Task	ILS Training Flight			

RADIO CHANNELS

#	Freq	Name
1		Flight/Squadron specific
2	288.2	Akrotiri ATIS
3	240.1	Akrotiri Ground
4	339.85	Aktrotiri Tower
5	335.05	Akrotiri Approach
6	360.1	Incirlik Tower
7	371.35	Incirlik Ground
8	377.475	Incirlik ATIS
9		No Preset
10	127.3	Paphos ATIS
11	353.8	Paphos Tower
12	304.0	CVN-73 George Washington
13	302.0	LHA-1 Tarawa
14	259.0	CV-59 Forrestal
15		No Preset
16	377.8	Overlord
17	265.0	KC-135 Texaco-1 medium/slow
18	319.8	KC-135 Arco-1
19	360.8	KC-135MPRS Arco-2
20	256.0	S-3B Recovery Tanker

RAMROD

0	1	2	3	4	5	6	7	8	9
P	R	E	C	L	U	S	I	O	N

KTC 1400 C

	0	1	2	3	4	5	6	7	8	9
A	SKTR	NWI	BUO	PD	EG	XFH	YQ	CL	JM	VA
B	WIGM	SBU	YCT	FE	LP	RAH	JQ	DV	OX	NK
C	ESJV	YAP	WTX	LF	DG	KQB	RI	UH	MO	CN
D	TJMP	KRG	YVI	HC	UN	DBS	QF	OW	LA	EX
E	SRCL	AUG	QON	WX	TE	BKD	VY	PF	JI	MH
F	MCHF	VNB	PRJ	XQ	AW	YUE	TK	ID	GL	OS
G	TADL	IYP	WQN	EH	SF	RJX	OG	VM	UB	CK
H	YJFR	CQB	ANX	LU	DG	WEP	VT	SM	OH	IK
I	ROTY	DQH	JWM	XE	PA	NGK	CU	FB	IS	VL
J	XHPW	GDL	NKC	MY	IR	JVS	EB	OA	TU	QF
K	DKGT	LJM	ROC	XI	YA	WHB	QV	SE	PU	NF
L	VCKU	LTR	HSF	BW	IE	OAX	YG	MJ	PN	QD
M	KBFA	MSJ	CXO	LR	HQ	UVP	NE	DI	TG	WY
N	SQAV	MOK	NHE	BF	CU	XLW	IG	DJ	RT	PY
O	MFNK	HSD	QPG	IL	VY	WRT	BX	CJ	OU	AE
P	NOPB	JQW	LTK	MC	RF	YVU	EX	HS	IA	GD
Q	VDCW	YFT	QOA	EM	BU	XPG	HS	NI	KJ	RL
R	GFQO	MBA	TYI	LX	VD	KWE	RU	CS	JH	PN
S	FDGO	EAJ	TQN	PC	HM	KLX	BI	WS	RU	YV
T	PJQY	UGL	TKD	FM	AS	RXE	VI	WH	NO	CB
U	NDFQ	GBV	XKO	IE	RU	SWL	MT	CJ	HY	AP
V	UIPC	XWN	JQK	OH	SR	ATF	DG	EV	ML	YB
W	MREN	TQV	DKL	OF	XS	UAH	YJ	WB	CG	IP
X	VRUY	JFW	KDQ	NC	SA	MGL	BX	OT	HI	PE
Y	UOJP	YMR	GHA	ED	VK	BIC	LT	SQ	NX	FW

NAVAIDS

Id	Name	Channel	Position	Elevation
DAN	Incirlik	21	N37 00.950 E035 26.883	243
AKR	Akrotiri	107	N34 34.765 E032 57.769	147
PHA	Paphos	79	N34 42.997 E032 28.963	35
RMD	Ramat David	84	N32 39.892 E035 11.265	136
OS66	Kuweires Military Aviation Institute	36	N36 11.362 E037 34.226	1200

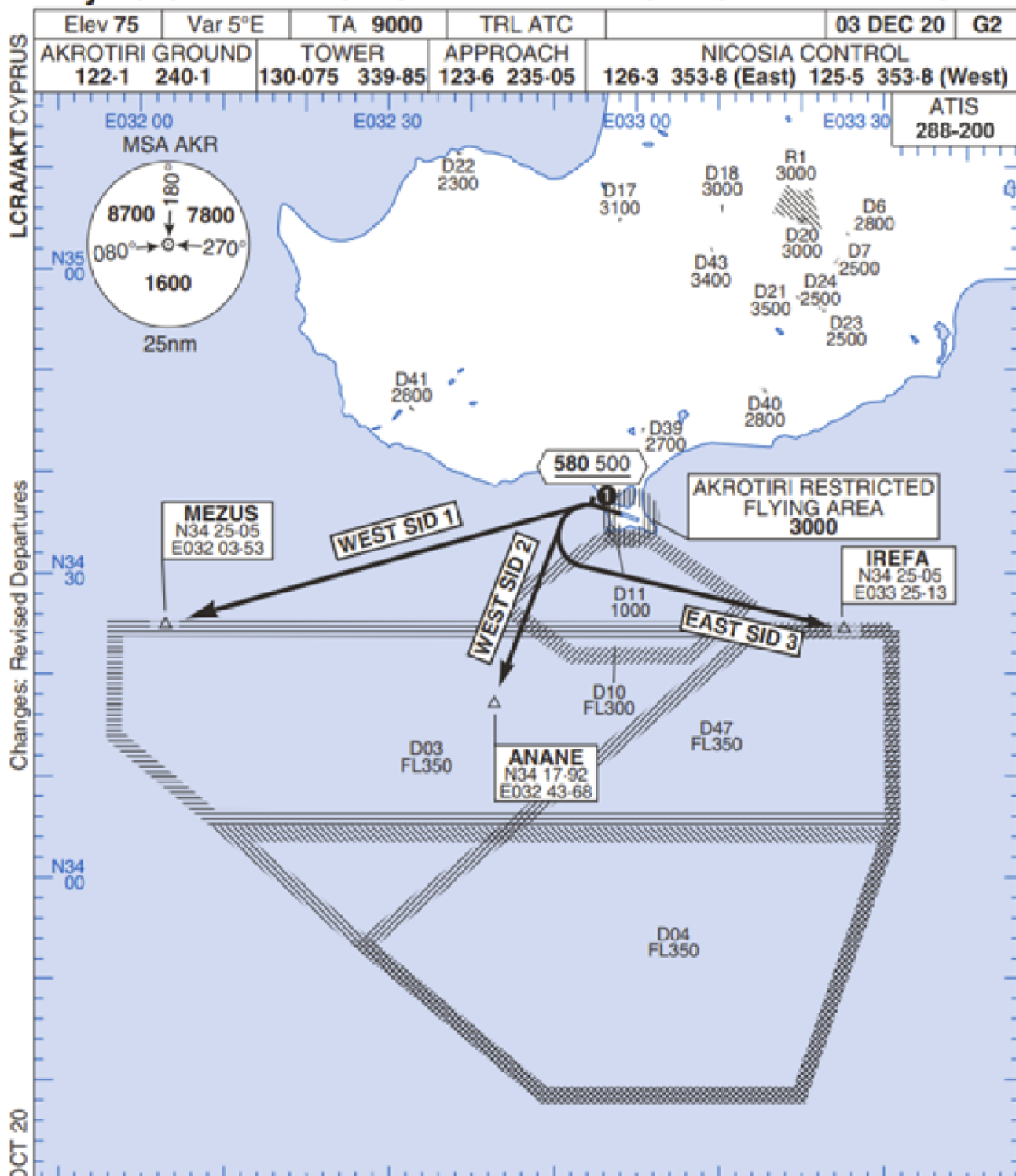
**FOR DCS
 USE ONLY**



ATIS	AKROTIRI GND	AKROTIRI TWR	OVERLORD CONTROL	TACAN	FIELD ELEVATION
288.20 MHz	240.10 122.10	339.85 130.075	377.8	AKR 107X	75 [ft] 23 [m]

Rwy 28 OMNIDIRECTIONAL DEPARTURES

AKROTIRI



Changes: Revised Departures

No1 AIDU Last Amended 06 OCT 20

© UK MOD Crown Copyright 2020. No1 AIDU is not responsible for, and claims no right to, the content or accuracy of 3rd party documents/information.

- 1. Minimum climb gradient 7% to 580 500 for obstacle and operational purposes.
- 2. No turns before DER.
- 3. Turns to north of Rwy prohibited.
- 4. Acft unable to locate MEZUS/ANANE/IREFA should request radar vectors from ATC.

SID	RWY	ROUTEING (Including Mnm Noise Routes)
WEST SID 1	28 283°M	Ahead on Rwy Tr to 580 500, turn left direct to MEZUS. SID terminates at 9000.
WEST SID 2		Ahead on Rwy Tr to 580 500, turn left direct to ANANE. SID terminates at 9000.
EAST SID 3		Ahead on Rwy Tr to 580 500, turn left direct to IREFA. SID terminates at 9000.

ATIS
377.475 (#8)

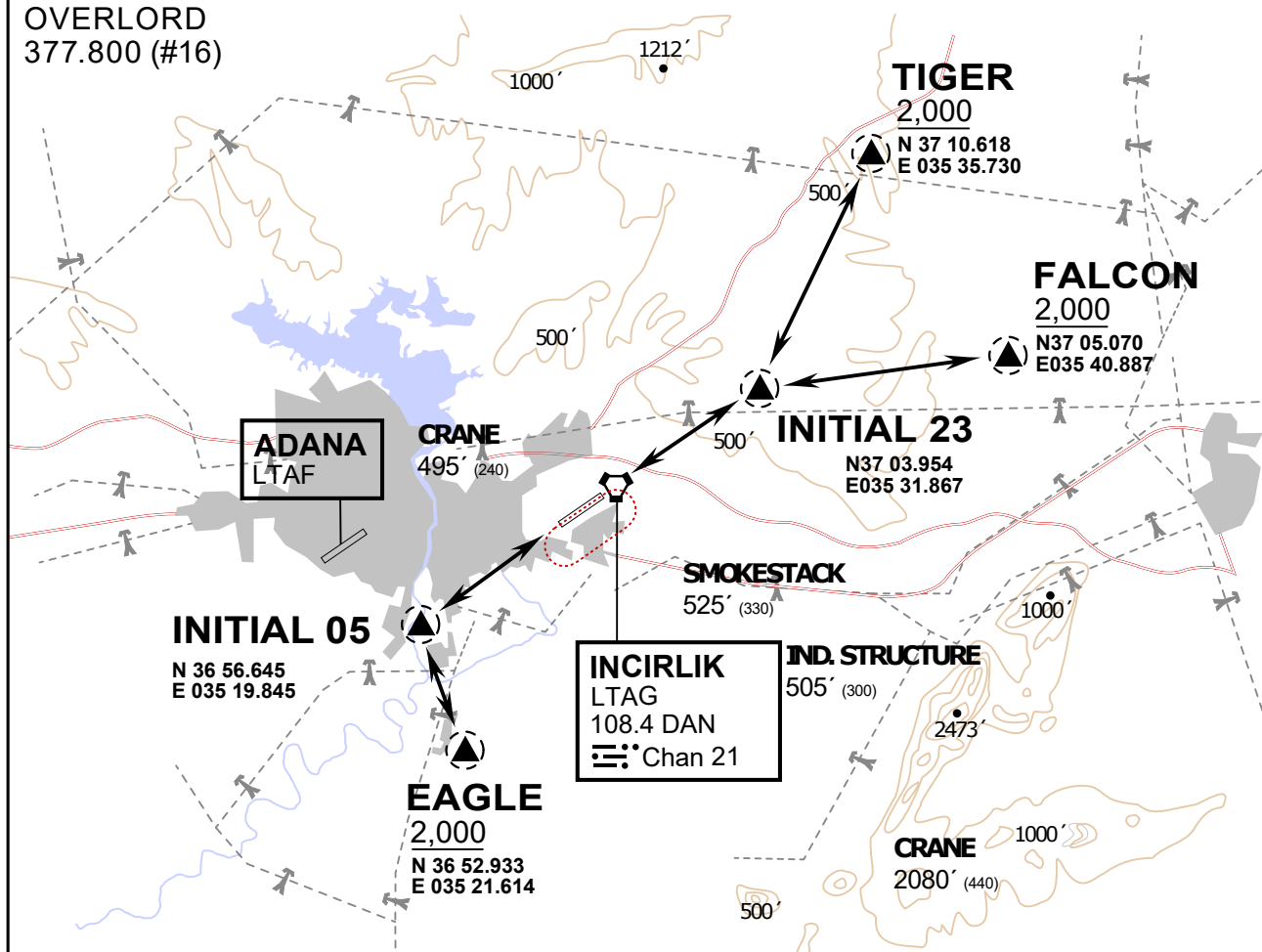
INCIRLIK GROUND
371.3500 (#7)

INCIRLIK TOWER
360.100 (#6)

OVERLORD
377.800 (#16)

NOT FOR CIVIL USE

CAUTION: If unable to comply
with restrictions advise ATC
prior to departure.



vJaBoG32 ETTR NAV CHART



ARR / DEP ROUTE DESCRIPTION

STRAIGHT-IN RWY 05 / 23

Pass entry EAGLE / TIGER / FALCON at 2000' and INITIAL at 1500'

OVERHEAD BREAK RWY 05 / 23

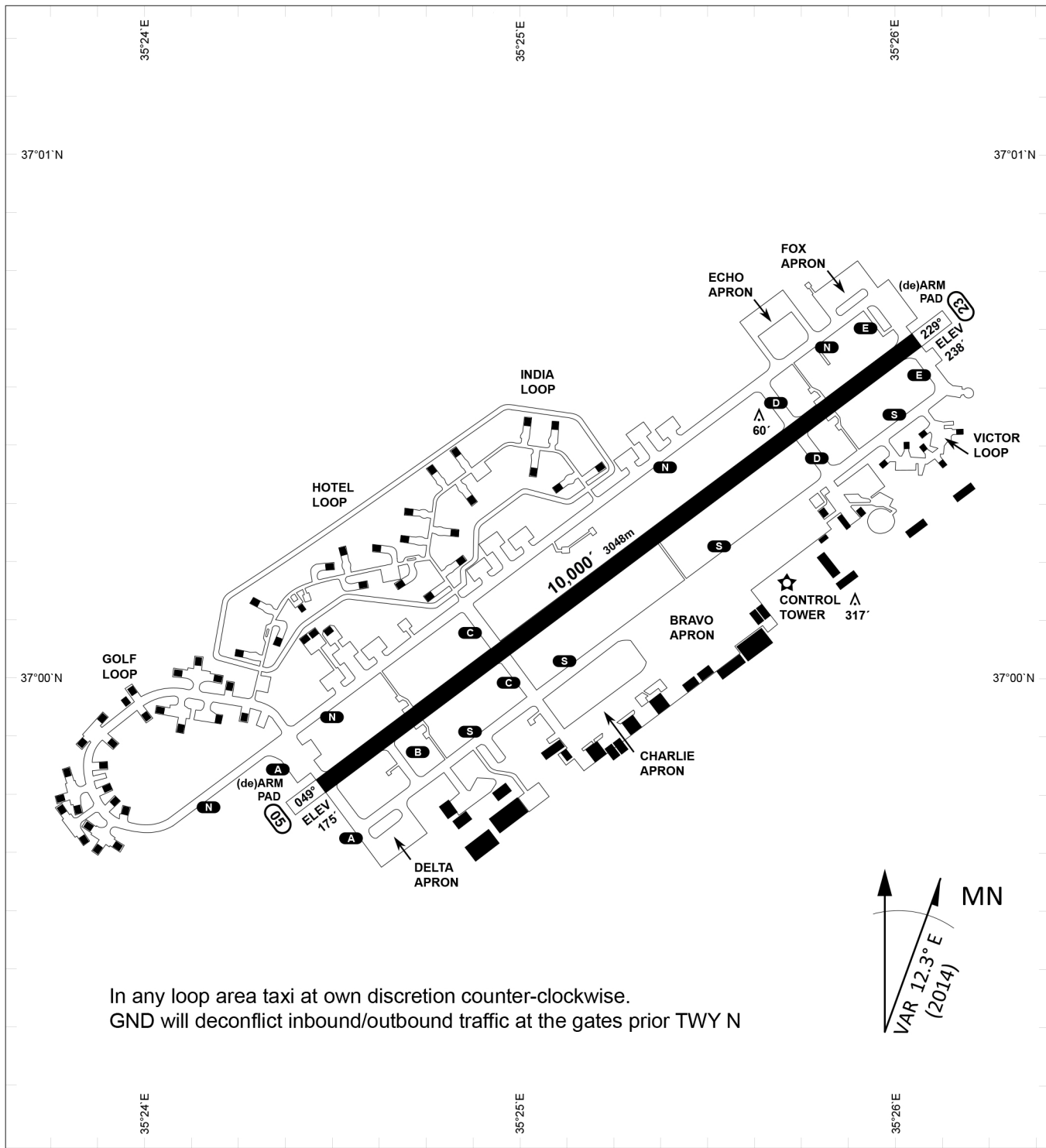
Pass entry EAGLE / TIGER / FALCON at 2500',
pass INITIAL at 2000' break to the south at 2000' pattern altitude.

HELICOPTER ROUTES

Pass entry EAGLE / TIGER / FALCON at 1000' or below, pass INITIAL at 1000' break to the south at 1000' pattern altitude.

DEPARTURE ALL DIRECTIONS

pass DER below 1500ft



In any loop area taxi at own discretion counter-clockwise.
 GND will deconflict inbound/outbound traffic at the gates prior TWY N

PAR	RWY	CAT	MINIMA	ARP	ELEV	Scale 1:35'500
	21L	A B D E	2057 - 0.8 200 (200-0.8/1.6) GS 3°	37°0'56.000" N 35°26'53.000" E	1857 [ft]	0 300 600 900 1200 1500 [m] 0 1000 2000 3000 4000 5000 [ft]
	3R	A B D E	2057 - 0.8 200 (200-0.8/1.6) GS 3°		566 [m]	
SRA	21R	A C D E	2257 - 1.2 350 (350-1.2/1.6)			
	3L	A C D E	2257 - 1.2 350 (350-1.2/1.6)			

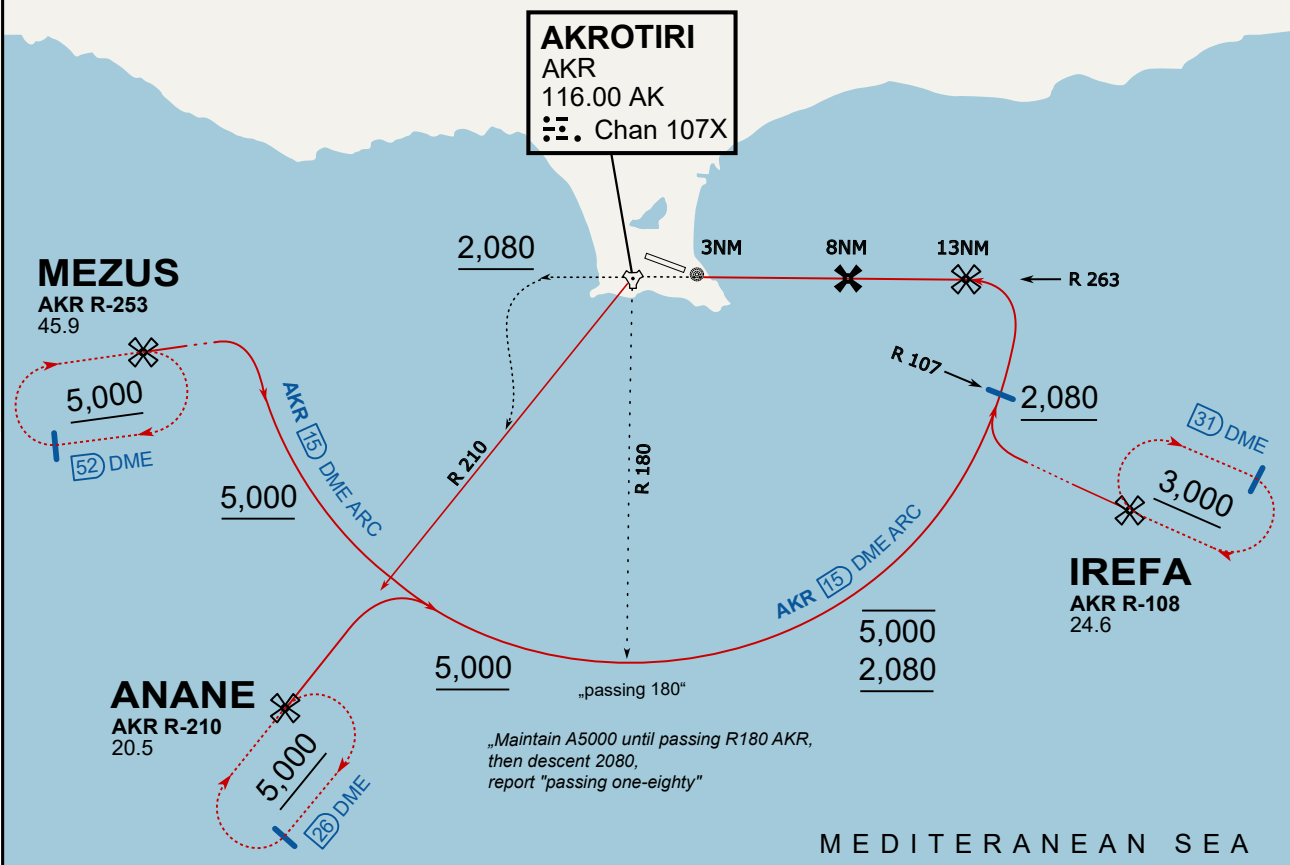
RWY	TORA	TORA from D	TORA from B	COURSE	PSN THR	ALS
23	10,000 [ft] 3048 [m]	8,000 [ft] 2438 [m]		235°	37°00.611'N 035°26.368'E	⊙
05	10,000 [ft] 3048 [m]		9,000 [ft] 2743 [m]	055°	36°59.043'N 035°24.760'E	⊙

ATIS	INCIRLIK GROUND	INCIRLIK TOWER	CONTROL	TACAN	ILS RWY 05	ILS RWY 23
377.475	371.350 123.020	360.100 121.100	337.800	DAN21x	109.3MHz	111.7MHz

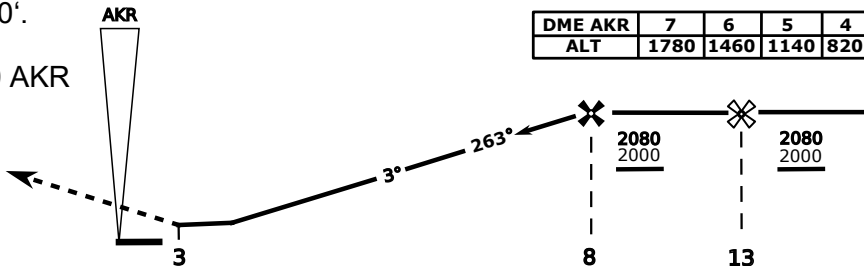
ATIS
 288.200
AKROTIRI GROUND
 122.100
AKROTIRI TOWER
 339.850
APP (OVERLORD)
 377.800

NOT FOR CIVIL USE

CAUTION: If unable to comply with restrictions advise ATC prior to departure.

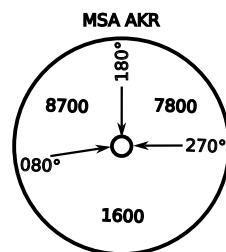


On Track 263° climb A 4.000'.
 passing 2.080' (2.000' AAL)
 turn left and intercept R-210 AKR
 to ANANE.
 Enter ANANE Holding.

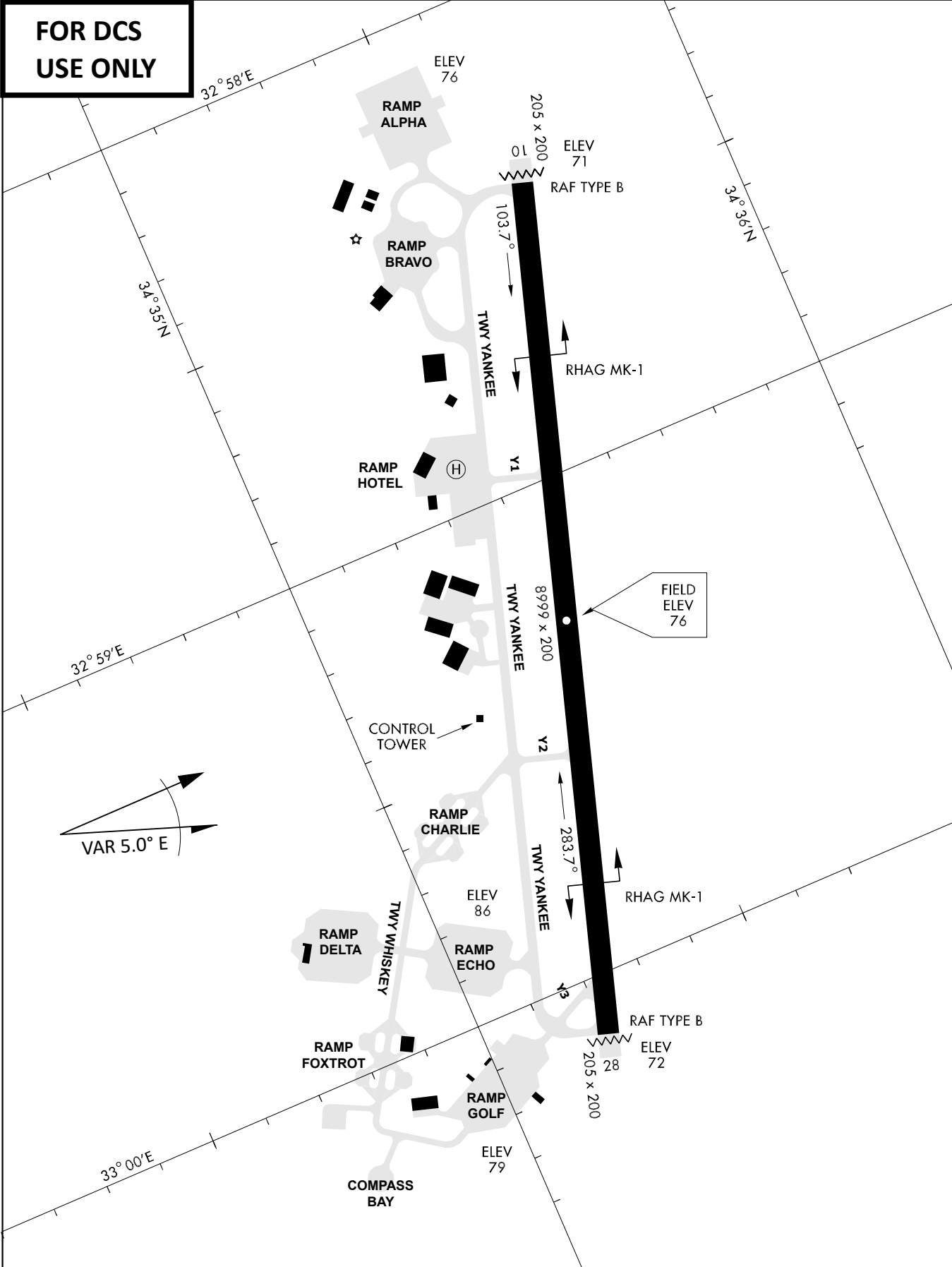


THR Elev 74ft DME AKR

CAT	TAC	CIRCLE	GS (kts)	80	120	150	180	210
A	500(430)	680 (610) 2000m	FAF - MAPt (4.1NM)	3:06	2:03	1:38	1:22	1:10
B	1300m		RoD (fpm)	420	640	800	950	1110
C	780 (710) 2600m	N/A	780 (710) 3300m	- CIRCLING PROHIBITED N of Rwy - final track is offset 20° right of RCL and Intcp 1.1NM before THR - when established on final contact tower - Timing not Auth to define MAPt				
D			780 (710) 3600m					
E			1380 (1310) 5000m					
		1380 (1310) 5000m						



**FOR DCS
 USE ONLY**



ATIS	AKROTIRI GND	AKROTIRI TWR	OVERLORD CONTROL	TACAN	FIELD ELEVATION
288.20 MHz	240.10 122.10	339.85 130.075	377.8	AKR 107X	75 [ft] 23 [m]