

MISSION DATA CARD

OPORD		Callsign		Mission		Date/Time		
1352/2022		Monster 1		Training		072030NOV22		
Task	Convoy Hunt unguided Weapons					Freq		
AO	Mission Area					132.15		
Departure				Recovery				
VFR				VFR				
#	Callsign		Pilot		IFF	TCN	LSR	NET
-1	Monster 1-1		Crusader		1411	21Y	1561	21/01
-2	Monster 1-2		Marsy		1412	84Y	1562	21/02

LOADOUT

A/A	A9M				GUN	100% CM	
A/G	7x7MK5, 12xM82A				CHF	180	
POD	A184, TGP				FLR	300	
TKS					FUEL	80%	

TOLD

	Takeoff	Target	Joker	Bingo	Land
FUEL	8869				

AIRBASES

	Name	TCN	ATIS	GND	TWR	RWY	Elev	ILS
Dep	Incirlik AFB	21X	377.47 5	371.35	360.1	5	190	
Arr	Incirlik AFB	21X	377.47 5	371.35	360.1	5	190	

FLIGHTPLAN

#	Name	Navaid/Coords/DME	ALT	TOT
1	EAGLE	N36 52.938 E035 21.611		
2	FALCON	N37 05.067 E035 40.888		

COMMS

Radio	Usage
1	132.15
2	8-6-7-16-8-7-6
3	32.00

OTHER FLIGHTS

Callsign	Mission	Airframe	Freq	TCN	Grpld	Laser
Rattler 2	Training	4x AH-64D	133.5	21/84		156X
AO	SA-10 böse	Task	NOE			
Vanguard 1	Training	1x AV-8B N/A	264.55	21/84		162X
AO		Task				
Edelweiss 1	Training	4x F/A-18C	261.25	21/84		156X
AO		Task	Cape Pyla Bomb Delivery			
T-Rex 2	Training	4x A-10C	132.25	21/84	25	165X
AO	Mission Area	Task	Convoy Hunt unguided Weapons			
Edelweiss 7	Training	4x F-16C	134.1	21/84		156X
AO		Task	Cape Pyla Bomb Delivery			
Raptor 1	Training	4x F-16C	134.0	21/84		156X
AO	Ship Range	Task	SHIP Hunt - Moving Ships - return fire on			
Tiger 1	Training	4x F/A-18C	261.15	21/84	1	156X
AO	Akamas Bombing Range / SA11 Full	Task	Training			
Cougar 1	Training	4x F-14B	261.35	21/84		156X
AO	BFM Range	Task	ACM Training			
Panther 2	Training	4x F/A-18C	261.15	21/84	1	156X
AO	Akamas Bombing Range / SA11 Full	Task	Training			

RADIO CHANNELS

#	Freq	Name
1		Flight/Squadron specific
2	288.2	Akrotiri ATIS
3	240.1	Akrotiri Ground
4	339.85	Aktrotiri Tower
5	335.05	Akrotiri Approach
6	360.1	Incirlik Tower
7	371.35	Incirlik Ground
8	377.475	Incirlik ATIS
9		No Preset
10	127.3	Paphos ATIS
11	353.8	Paphos Tower
12	304.0	CVN-73 George Washington
13	302.0	LHA-1 Tarawa
14	259.0	CV-59 Forrestal
15		No Preset
16	377.8	Overlord
17	265.0	KC-135 Texaco-1 medium/slow
18	319.8	KC-135 Arco-1
19	360.8	KC-135MPRS Arco-2
20	256.0	S-3B Recovery Tanker

RAMROD

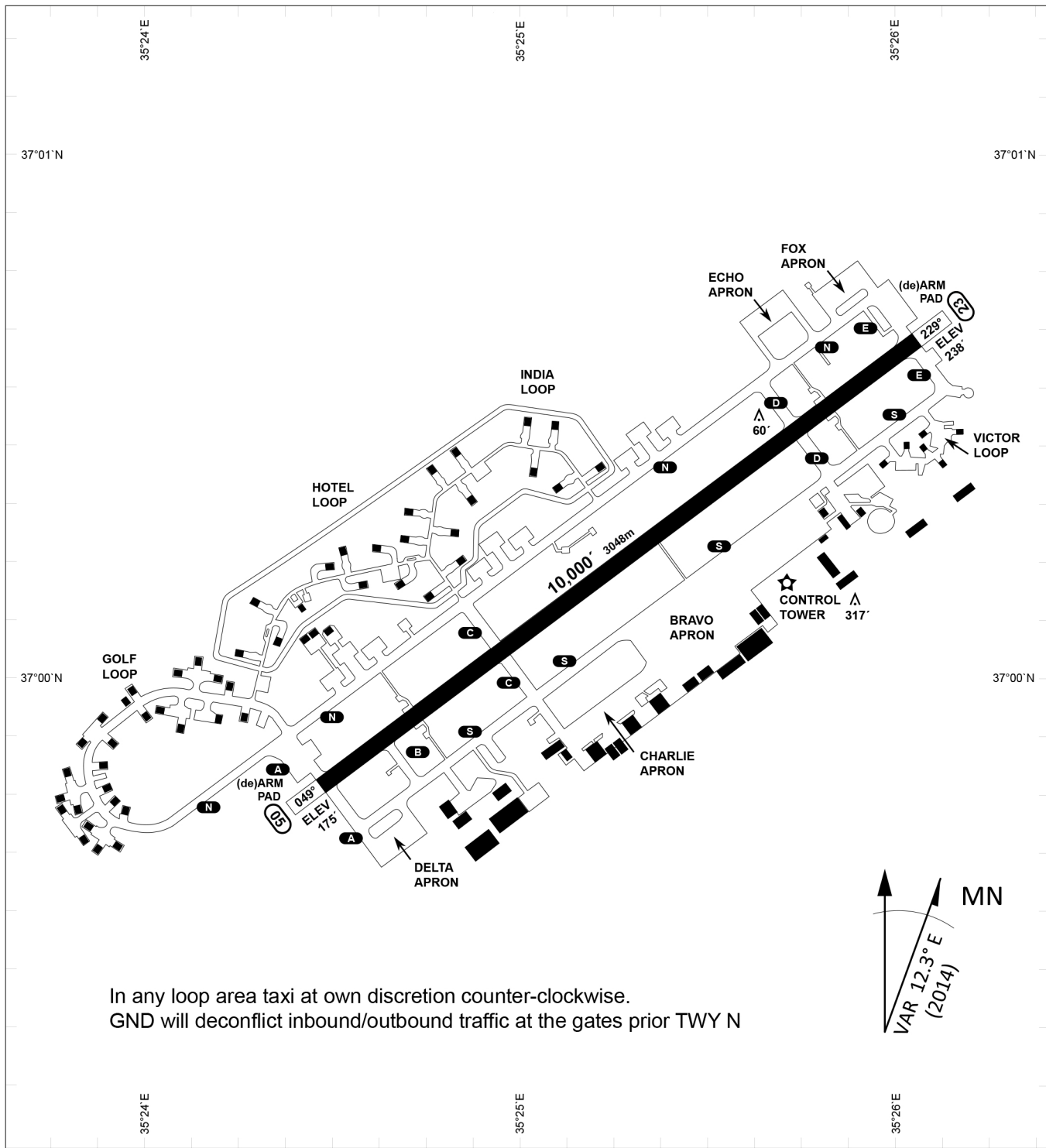
0	1	2	3	4	5	6	7	8	9
O	V	E	R	P	A	Y	I	N	G

KTC 1400 C

	0	1	2	3	4	5	6	7	8	9
A	HKWR	TJV	EPO	BY	AQ	IFG	SM	LU	DC	NX
B	VJXP	MQA	DIR	ON	EH	KSY	FL	CU	WB	TG
C	GDPV	HLX	KTR	CO	FB	YNQ	EV	MS	IW	JA
D	QFOL	VBD	YAW	TI	GM	XNH	SE	UP	KC	RJ
E	DIPC	VUR	NYK	JF	BO	MXG	QA	HE	WS	LT
F	EPGI	SMW	CUD	JQ	YX	KNT	RV	HL	OA	FB
G	CBNE	KOM	LVP	YR	UD	WQG	TH	XI	SA	JF
H	OIEG	BXL	CTN	AS	FW	MPK	QU	HV	RJ	YD
I	BEMO	TAX	PRD	JF	KI	WVH	US	YG	CN	LQ
J	VNSF	KER	WJP	QD	LB	HXI	OM	UC	TG	YA
K	VNFE	DKH	WPO	QB	JY	ASI	RC	ML	TX	UG
L	WGMV	TQS	CNV	XR	FU	EKJ	DL	AP	OI	BH
M	ESIT	QFD	BYA	JR	CO	XMH	WN	PG	UK	VL
N	JLEK	AUB	FNW	YC	HQ	SVM	IR	GO	PD	XT
O	XIGD	BKA	JNE	FT	LR	YVQ	SP	OM	WC	HU
P	RUEO	TIJ	BVX	FG	QP	NWY	LA	MC	SD	KH
Q	CIFY	UWK	PMQ	GB	VN	JEX	DL	RO	SA	HT
R	WHSC	RUM	JXL	GA	VQ	PYF	OB	KT	IN	DE
S	PJOC	GIM	FHR	SY	KV	TAX	DB	NW	LU	QE
T	HPKV	NSD	FAR	LE	WI	CYQ	XG	JM	OT	BU
U	AJMX	QDE	TFL	SI	NR	BYU	HV	GC	OW	PK
V	NDPF	GLX	WUS	QV	JR	TIA	EY	BH	OK	MC
W	WAXB	CSO	LUF	GP	ET	QYV	HI	KM	RD	JN
X	KADY	MHX	LVN	OB	TP	GRJ	IF	QC	UE	WS
Y	BRGY	XLP	TFC	JE	QV	HOS	IM	UD	AN	KW

NAVAIDS

Id	Name	Channel	Position	Elevation
DAN	Incirlik	21	N37 00.950 E035 26.883	243
AKR	Akrotiri	107	N34 34.765 E032 57.769	147
PHA	Paphos	79	N34 42.997 E032 28.963	35
RMD	Ramat David	84	N32 39.892 E035 11.265	136
OS66	Kuweires Military Aviation Institute	36	N36 11.362 E037 34.226	1200



PAR	RWY	CAT	MINIMA	ARP	ELEV	Scale 1:35'500 0 300 600 900 1200 1500 [m] 0 1000 2000 3000 4000 5000 [ft]
	21L	A B D E	2057 - 0.8 200 (200-0.8/1.6) GS 3°	37°0'56.000" N	1857 [ft]	
SRA	21R	A C D E	2257 - 1.2 350 (350-1.2/1.6)	35°26'53.000" E	566 [m]	
	3L	A C D E	2257 - 1.2 350 (350-1.2/1.6)			

RWY	TORA	TORA from D	TORA from B	COURSE	PSN THR	ALS
23	10,000 [ft] 3048 [m]	8,000 [ft] 2438 [m]		235°	37°00.611'N 035°26.368'E	⊙
05	10,000 [ft] 3048 [m]		9,000 [ft] 2743 [m]	055°	36°59.043'N 035°24.760'E	⊙

ATIS	INCIRLIK GROUND	INCIRLIK TOWER	CONTROL	TACAN	ILS RWY 05	ILS RWY 23
377.475	371.350 123.020	360.100 121.100	337.800	DAN21x	109.3MHz	111.7MHz

ATIS
377.475 (#8)

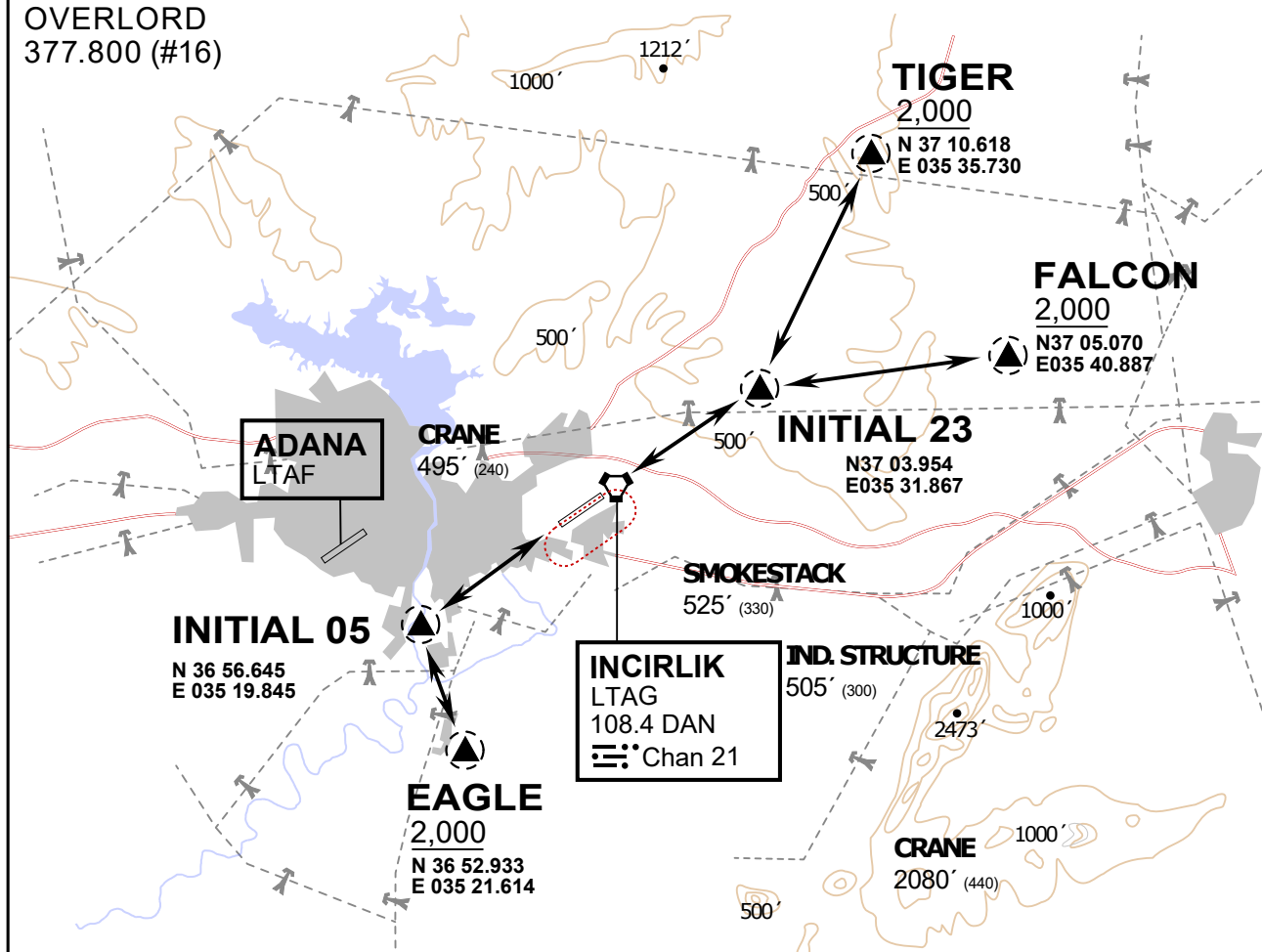
INCIRLIK GROUND
371.3500 (#7)

INCIRLIK TOWER
360.100 (#6)

OVERLORD
377.800 (#16)

NOT FOR CIVIL USE

CAUTION: If unable to comply
with restrictions advise ATC
prior to departure.



vJaBoG32 ETTR NAV CHART



ARR / DEP ROUTE DESCRIPTION

STRAIGHT-IN RWY 05 / 23

Pass entry EAGLE / TIGER / FALCON at 2000' and INITIAL at 1500'

OVERHEAD BREAK RWY 05 / 23

Pass entry EAGLE / TIGER / FALCON at 2500',
pass INITIAL at 2000' break to the south at 2000' pattern altitude.

HELICOPTER ROUTES

Pass entry EAGLE / TIGER / FALCON at 1000' or below, pass INITIAL at 1000' break to the south at 1000' pattern altitude.

DEPARTURE ALL DIRECTIONS

pass DER below 1500ft

ATIS
377.475 (#8)

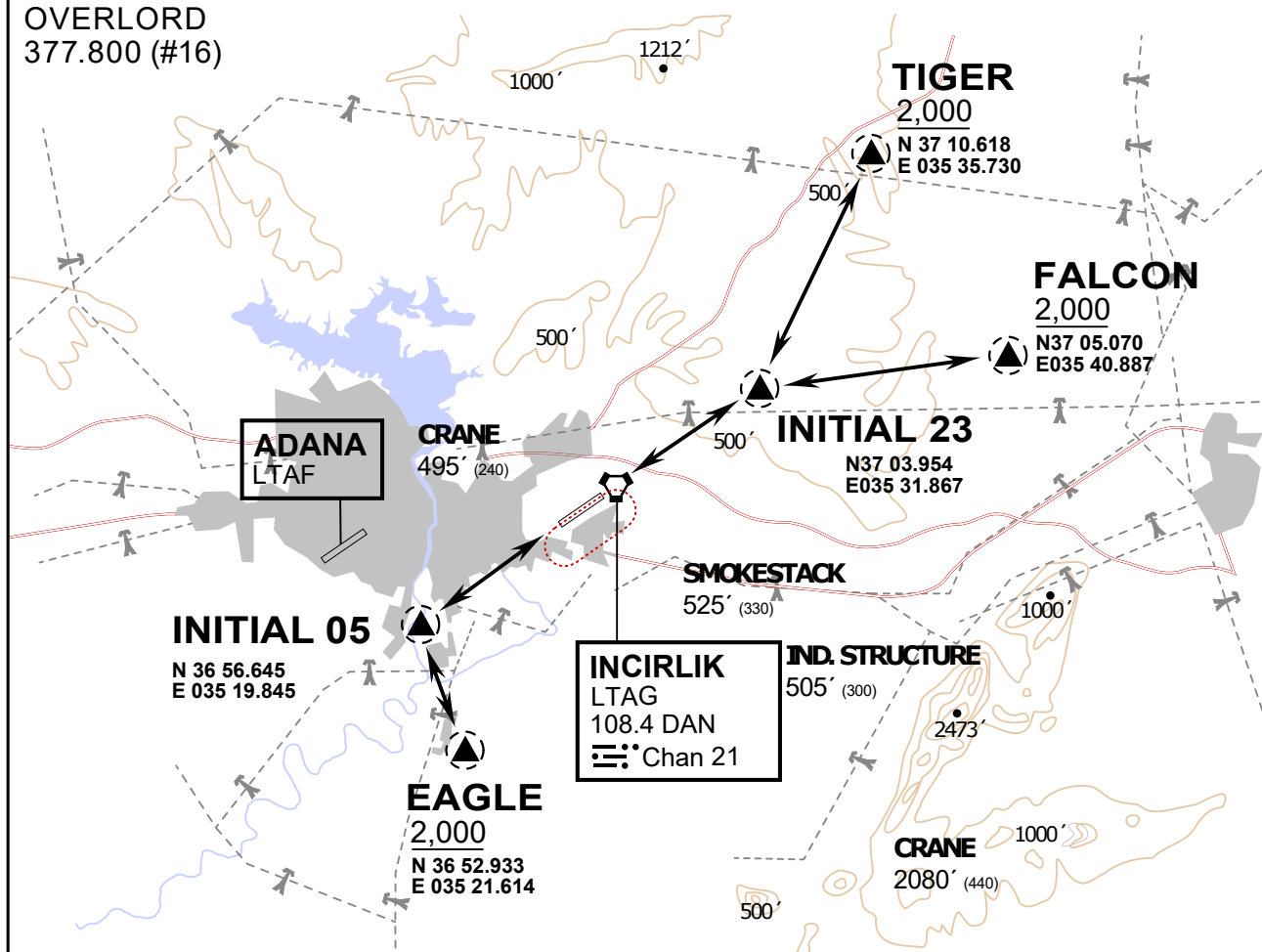
INCIRLIK GROUND
371.3500 (#7)

INCIRLIK TOWER
360.100 (#6)

OVERLORD
377.800 (#16)

NOT FOR CIVIL USE

CAUTION: If unable to comply
with restrictions advise ATC
prior to departure.



vJaBoG32 ETTR NAV CHART



ARR / DEP ROUTE DESCRIPTION

STRAIGHT-IN RWY 05 / 23

Pass entry EAGLE / TIGER / FALCON at 2000' and INITIAL at 1500'

OVERHEAD BREAK RWY 05 / 23

Pass entry EAGLE / TIGER / FALCON at 2500',
pass INITIAL at 2000' break to the south at 2000' pattern altitude.

HELICOPTER ROUTES

Pass entry EAGLE / TIGER / FALCON at 1000' or below, pass INITIAL at 1000' break to the south at 1000' pattern altitude.

DEPARTURE ALL DIRECTIONS

pass DER below 1500ft