

MISSION DATA CARD

OPORD		Callsign		Mission		Date/Time	
1338/2022		Raptor 6		SEAD		242000NOV22	
Task	SEAD SA10					Freq	
AO	ATO406 22B25					134.0	
Departure				Recovery			
VFR				VFR			
#	Callsign	Pilot	IFF	TCN	LSR	NET	
-1	Raptor 6-1	Nerkub	1661	21Y	1561		
-2	Raptor 6-2	Void	1662	84Y	1562		
-3	Raptor 6-3	MKay	1663	84X	1563		
-4	Raptor 6-4	Woodman	1664	21X	1564		

LOADOUT

A/A	2xA120B, 2xA9X			GUN	100% HEI-T
A/G	4xA88C			CHF	120
POD	HTS, TGP			FLR	0
TKS	FT300			FUEL	100%

TOLD

	Takeoff	Target	Joker	Bingo	Land
FUEL	9166				

AIRBASES

	Name	TCN	ATIS	GND	TWR	RWY	Elev	ILS
Dep	Incirlik AFB	21X	377.47 5	371.35	360.1	5	190	
Arr	Incirlik AFB	21X	377.47 5	371.35	360.1	5	190	
Div	Akrotiri AFB	107X	288.2	240.1	339.85	28	62	109.7

FLIGHTPLAN

#	Name	Navaid/Coords/DME	ALT	TOT
1	FALCON	N37 04.810 E035 40.766	15000	
2	IP1	N35 29.203 E035 14.039	22000	
3	T1	N35 30.424 E035 56.842	22000	
4	IP2	N35 09.363 E035 14.122	22000	
5	T2	N35 05.384 E036 01.585	22000	
6	SAFE	N35 05.217 E034 55.111	22000	
7	ECHOO	N36 50.614 E035 12.956	15000	
8	Incirlik AB	N36 59.403 E035 24.282	15000	

COMMS

Radio	Usage
1	8/7/6 306.10 16 377.80 / 8/6/7 Backup OL 255.160
2	134.00

OTHER FLIGHTS

Callsign	Mission	Airframe	Freq	TCN	Grpld	Laser
Cougar 1	Sweep	4x F-14B	261.25	21/84		173X
	AO	ATO401 30B35	Task	SWEEP / CAP		
Tiger 3	Strike	4x F/A-18C	261.15	21/84		161X
	AO	ATO402 B27/28	Task	Harbor Strike - Latakia Ships		
Panther 2	Strike	3x F/A-18C	261.35	21/84		148X
	AO	ATO403 B25/26	Task	Harbor Strike - Tartus		
Monster 4	CAS	2x A-10C	132.25	21/84	25	146X
	AO	ATO404 13B14	Task	CAS KB Charlie		
T-Rex 6	Strike	2x A-10C	262.25	21/84		156X
	AO	ATO411	Task	ATO411		
Rattler 7	SCAR	4x AH-64D	133.5	21/84		169X
	AO	ATO407	Task	SCAR KB Delta		
Jedi* 4	CASEVAC	4x UH-1H	133.0	21/84		156X
	AO	ATO408	Task	Transport		
Tusk 2	CAS	2x A-10C	133.25	21/84		152X
	AO	ATO409	Task	CAS KB Bravo		
Monster 5	BAI	2x A-10C	132.15	21/84		146X
	AO	ATO410	Task	BAI KB Echo		
T-Rex 5	AR	3x A-10C	132.65	21/84	27	156X
	AO	ATO405 / 00B12	Task	AR KB Delta		
Whiplash* 1	JTAC	1x Ground	34.5	21/84		156X
	AO	KB Bravo	Task	JTAC		
Hammer* 5	JTAC	1x Ground	31.55	21/84		156X
	AO	KB Charlie	Task	JTAC		
Vanguard 1	SEAD	1x AV-8B N/A	134.0	21/84		168X
	AO	ATO 411	Task	Strike		
Tiger 3	Strike	4x F/A-18C	261.15	21/84		161X
	AO	ATO402 B29/30	Task	Harbor Strike - Latakia Bulding		
Panther 7	Strike	2x F/A-18C	261.45	21/84		148X

RADIO CHANNELS

#	Freq	Name
1		Flight/Squadron specific
2	288.2	Akrotiri ATIS
3	240.1	Akrotiri Ground
4	339.85	Aktrotiri Tower
5	335.05	Akrotiri Approach
6	360.1	Incirlik Tower
7	371.35	Incirlik Ground
8	377.475	Incirlik ATIS
9		No Preset
10	127.3	Paphos ATIS
11	353.8	Paphos Tower
12	304.0	CVN-73 George Washington
13	302.0	LHA-1 Tarawa
14	259.0	CV-59 Forrestal
15		No Preset
16	377.8	Overlord
17	265.0	KC-135 Texaco-1 medium/slow
18	319.8	KC-135 Arco-1
19	360.8	KC-135MPRS Arco-2
20	256.0	S-3B Recovery Tanker

RAMROD

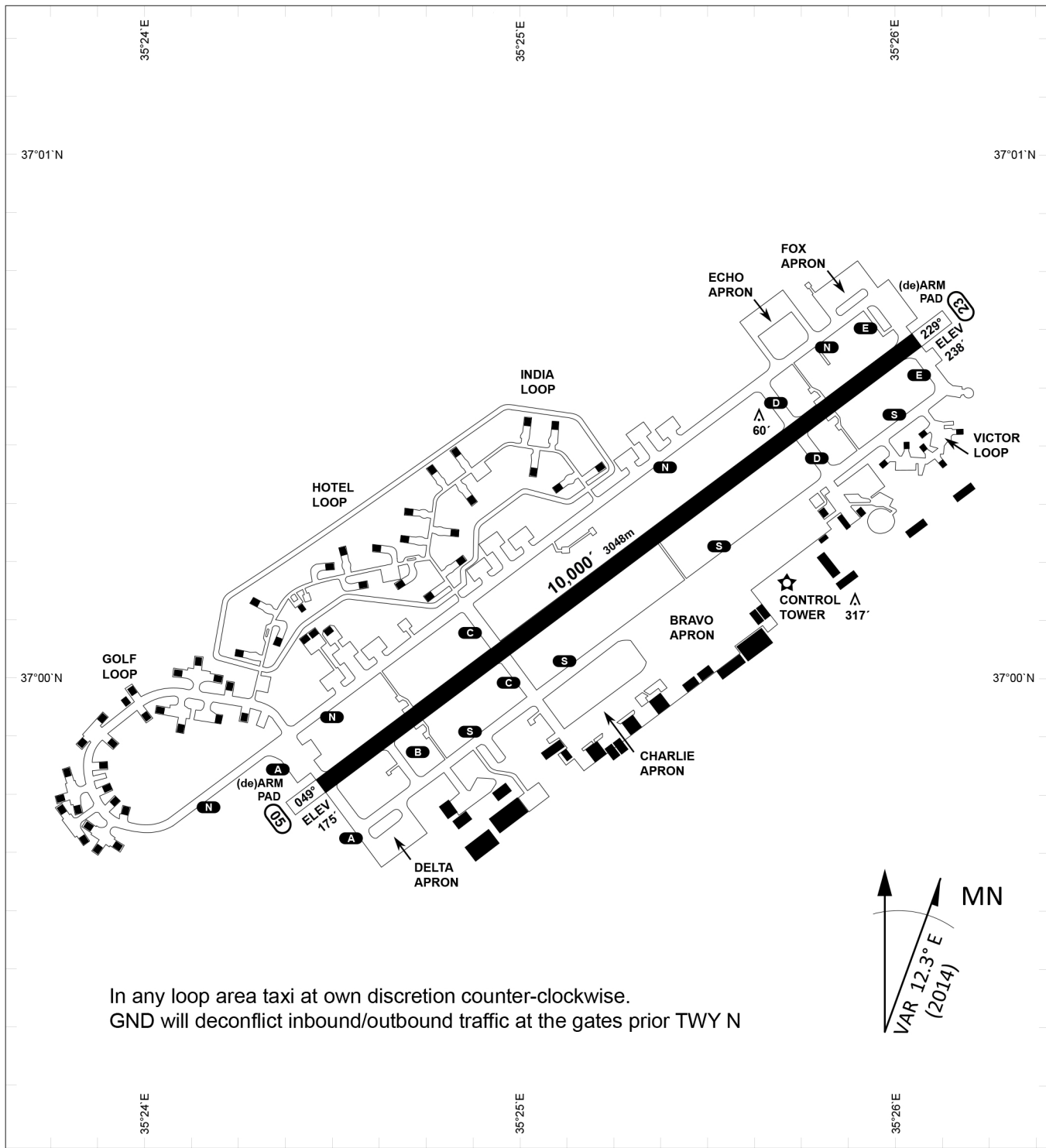
0	1	2	3	4	5	6	7	8	9
P	A	R	C	H	M	E	N	T	S

KTC 1400 C

	0	1	2	3	4	5	6	7	8	9
A	UQOL	WJG	KBP	NV	CM	EDX	RI	SY	AT	HF
B	LBPK	GVS	AHF	DY	UE	CNJ	WM	IT	QR	OX
C	QLIB	DAW	FVR	PE	YC	SMH	UX	OT	KG	NJ
D	BTMN	CUS	PJQ	EH	RK	YVI	WL	FA	GD	XO
E	IMJK	NOG	UWV	XT	SA	FDE	QB	LH	PC	RY
F	MIAU	YEX	ONC	SP	GB	DQJ	TV	RH	LF	WK
G	OATX	BHG	VPN	FW	LS	YJI	UC	RD	EK	QM
H	PVEO	UAX	CMN	SB	TL	QDG	WR	KH	YF	JI
I	PJYD	USK	NIX	CB	ER	OGV	QT	LA	FW	HM
J	PHRM	KEW	NOJ	VS	CD	YGU	TQ	FB	IA	LX
K	VNBR	KOH	XIF	QY	MP	SWG	EL	CT	DA	UJ
L	EPNB	MAF	XHY	UQ	TK	CIS	RV	GL	DW	JO
M	JQIW	NDF	LSP	UY	RG	KAE	BM	VO	CH	XT
N	CQOV	ADT	LBY	MX	FH	UNK	GE	PJ	IW	SR
O	XYOD	EQL	KHN	GM	UF	RVA	WC	TI	SB	PJ
P	WICB	MLV	DEO	JF	TK	RNU	AX	HS	PY	QG
Q	RSCB	FOL	HMX	GT	YW	IND	VK	QA	JE	PU
R	PKFT	OIW	CMB	GR	NH	VXJ	QY	DL	EU	AS
S	QHJF	SOV	WGU	YL	TP	RIB	AE	NM	XD	CK
T	CEXU	AWI	LTQ	HP	GK	MOJ	YF	DR	BV	SN
U	YSLF	AVN	BGE	RK	MP	OQC	HT	WD	XU	JI
V	AJTX	YSR	KGW	DO	EL	VHM	UB	PF	IN	CQ
W	HLFD	QPG	JMX	AN	IR	WBS	YV	OC	KU	TE
X	HORW	GBP	SIV	KF	TJ	ECU	YD	AM	NL	QX
Y	GMDT	NKX	LHV	UJ	SW	AFE	YR	QP	BC	OI

NAVAIDS

Id	Name	Channel	Position	Elevation
DAN	Incirlik	21	N37 00.950 E035 26.883	243
AKR	Akrotiri	107	N34 34.765 E032 57.769	147
PHA	Paphos	79	N34 42.997 E032 28.963	35
RMD	Ramat David	84	N32 39.892 E035 11.265	136
OS66	Kuweires Military Aviation Institute	36	N36 11.362 E037 34.226	1200



In any loop area taxi at own discretion counter-clockwise.
 GND will deconflict inbound/outbound traffic at the gates prior TWY N

PAR	RWY	CAT	MINIMA	ARP	ELEV	Scale 1:35'500 0 300 600 900 1200 1500 [m] 0 1000 2000 3000 4000 5000 [ft]
	21L	A B D E	2057 - 0.8 200 (200-0.8/1.6) GS 3°	37°0'56.000" N	1857 [ft]	
SRA	21R	A C D E	2257 - 1.2 350 (350-1.2/1.6)	35°26'53.000" E	566 [m]	
	3L	A C D E	2257 - 1.2 350 (350-1.2/1.6)			

RWY	TORA	TORA from D	TORA from B	COURSE	PSN THR	ALS
23	10,000 [ft] 3048 [m]	8,000 [ft] 2438 [m]		235°	37°00.611'N 035°26.368'E	⊙
05	10,000 [ft] 3048 [m]		9,000 [ft] 2743 [m]	055°	36°59.043'N 035°24.760'E	⊙

ATIS	INCIRLIK GROUND	INCIRLIK TOWER	CONTROL	TACAN	ILS RWY 05	ILS RWY 23
377.475	371.350 123.020	360.100 121.100	337.800	DAN21x	109.3MHz	111.7MHz

ATIS
377.475 (#8)

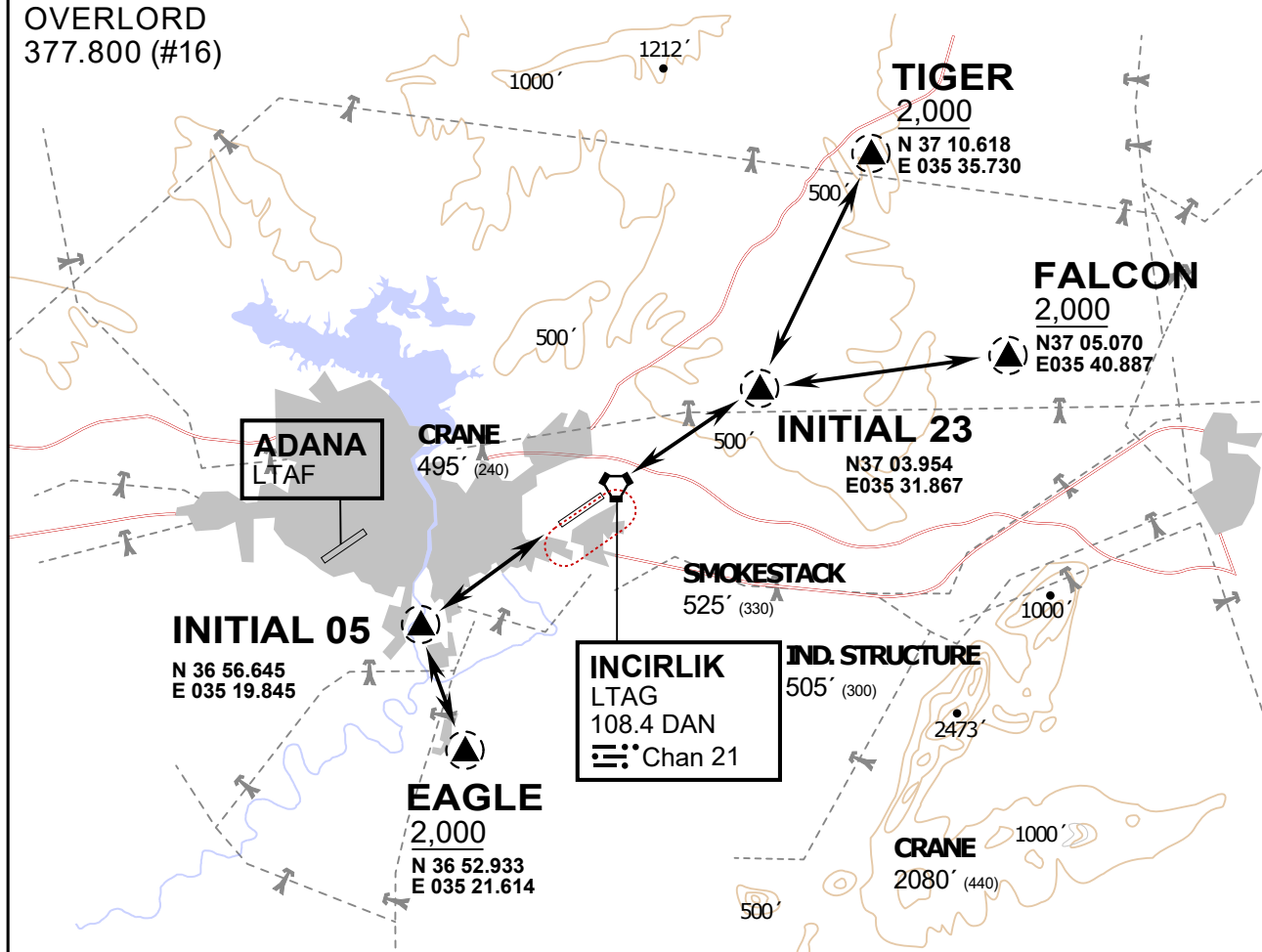
INCIRLIK GROUND
371.3500 (#7)

INCIRLIK TOWER
360.100 (#6)

OVERLORD
377.800 (#16)

NOT FOR CIVIL USE

CAUTION: If unable to comply
with restrictions advise ATC
prior to departure.



vJaBoG32 ETTR NAV CHART



ARR / DEP ROUTE DESCRIPTION

STRAIGHT-IN RWY 05 / 23

Pass entry EAGLE / TIGER / FALCON at 2000' and INITIAL at 1500'

OVERHEAD BREAK RWY 05 / 23

Pass entry EAGLE / TIGER / FALCON at 2500',
pass INITIAL at 2000' break to the south at 2000' pattern altitude.

HELICOPTER ROUTES

Pass entry EAGLE / TIGER / FALCON at 1000' or below, pass INITIAL at 1000' break to the south at 1000' pattern altitude.

DEPARTURE ALL DIRECTIONS

pass DER below 1500ft

ATIS
377.475 (#8)

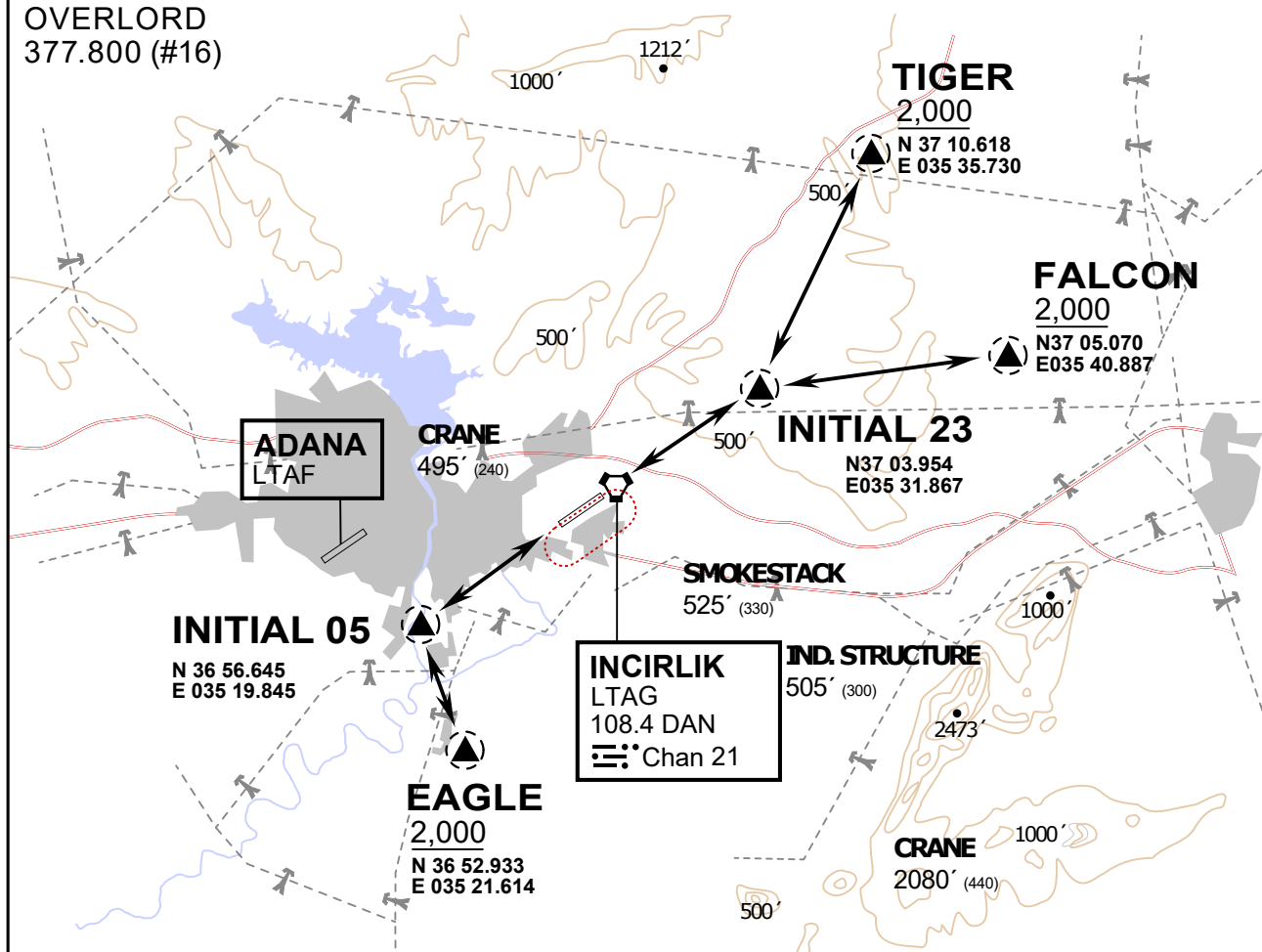
INCIRLIK GROUND
371.3500 (#7)

INCIRLIK TOWER
360.100 (#6)

OVERLORD
377.800 (#16)

NOT FOR CIVIL USE

CAUTION: If unable to comply
with restrictions advise ATC
prior to departure.



vJaBoG32 ETRR NAV CHART



ARR / DEP ROUTE DESCRIPTION

STRAIGHT-IN RWY 05 / 23

Pass entry EAGLE / TIGER / FALCON at 2000' and INITIAL at 1500'

OVERHEAD BREAK RWY 05 / 23

Pass entry EAGLE / TIGER / FALCON at 2500',
pass INITIAL at 2000' break to the south at 2000' pattern altitude.

HELICOPTER ROUTES

Pass entry EAGLE / TIGER / FALCON at 1000' or below, pass INITIAL at 1000' break to the south at 1000' pattern altitude.

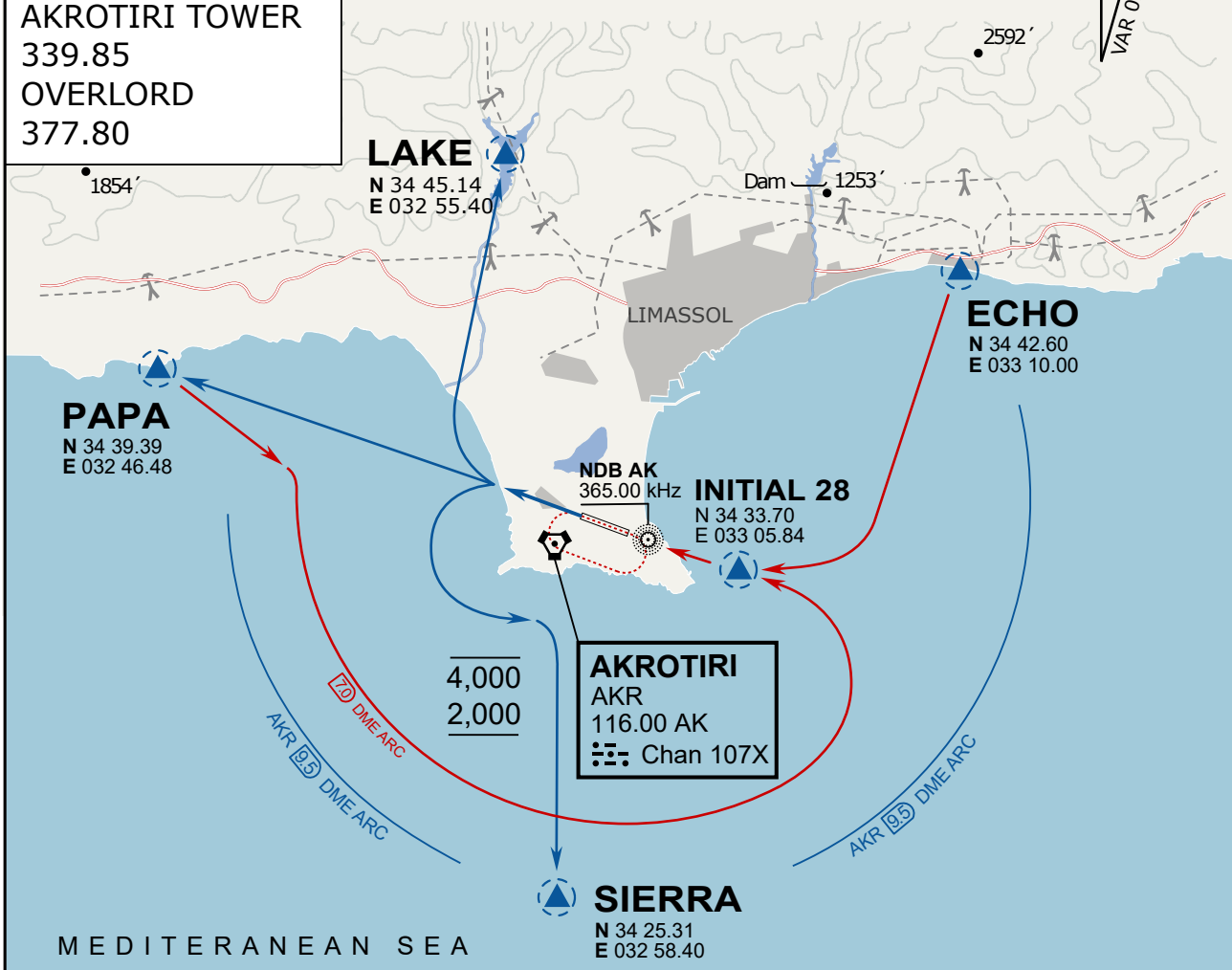
DEPARTURE ALL DIRECTIONS

pass DER below 1500ft

ATIS
 288.20
AKROTIRI GROUND
 240.10
AKROTIRI TOWER
 339.85
OVERLORD
 377.80

NOT FOR CIVIL USE

CAUTION: If unable to comply
 with restrictions advise ATC
 prior to departure.



ARR / DEP ROUTE DESCRIPTION

STRAIGHT-IN RWY28

Pass ENTRY at 5.000' MSL or below, pass INITIAL at 1.500' MSL or below.

OVERHEAD BREAK RWY28

Pass ENTRY at 5.000' MSL or below, pass INITIAL at 2.000' MSL, break to the south.

DEPARTURE GENERAL

Pass Departure end of runway at 1.000' or below.

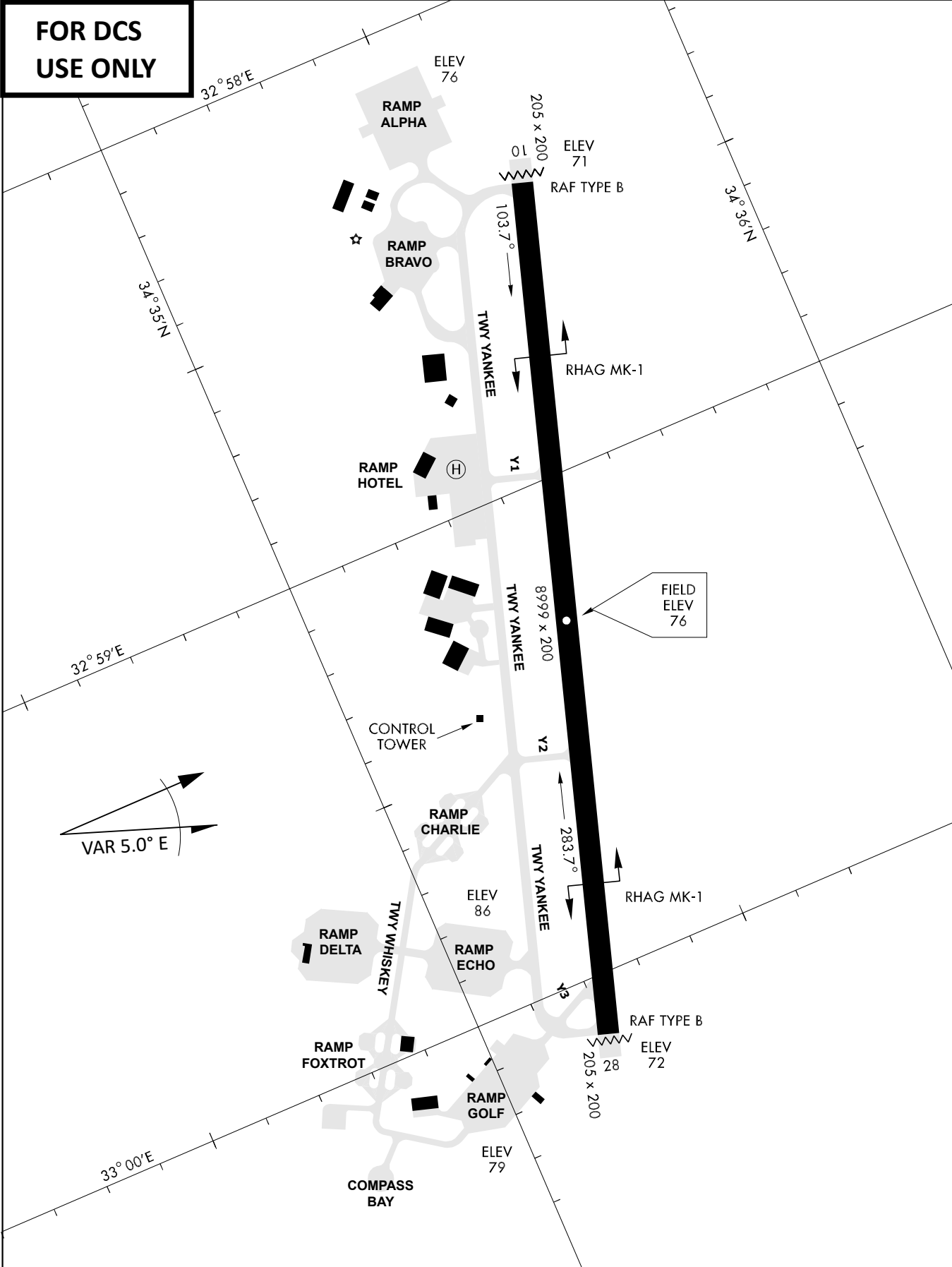
DEP RWY28 PAPA: Fly straight ahead to exit.

DEP RWY28 LAKE: Fly straight ahead until coast, than right turn direct exit.

DEP RWY28 SIERRA: Fly straight ahead until coastline, then climbing left turn, intercept AKR R-180 to exit.

DEP ECHO: no exit.

**FOR DCS
 USE ONLY**



ATIS	AKROTIRI GND	AKROTIRI TWR	OVERLORD CONTROL	TACAN	FIELD ELEVATION
288.20 MHz	240.10 122.10	339.85 130.075	377.8	AKR 107X	75 [ft] 23 [m]