

MISSION DATA CARD

OPORD		Callsign		Mission		Date/Time	
1335/2022		Monster 4		CAS		242000NOV22	
Task	CAS KB Charlie					Freq	
AO	ATO404 13B14					132.25	
Departure				Recovery			
VFR				VFR			
#	Callsign	Pilot	IFF	TCN	LSR	NET	
-1	Monster 4-1	Toolface	1441	21Y	1461	25/01	
-2	Monster 4-2	Lenzi	1442	84Y	1462	25/02	

LOADOUT

A/A	2xA9M			GUN	100% CM
A/G	4xA65D, 7x7M282L			CHF	180
POD	TGP, A184			FLR	300
TKS				FUEL	80%

TOLD

	Takeoff	Target	Joker	Bingo	Land
FUEL	8869				

AIRBASES

	Name	TCN	ATIS	GND	TWR	RWY	Elev	ILS
Dep	Incirlik AFB	21X	377.47 5	371.35	360.1	5	190	
Arr	Incirlik AFB	21X	377.47 5	371.35	360.1	5	190	

FLIGHTPLAN

#	Name	Navaid/Coords/DME	ALT	TOT
1	INITIAL 05	N36 56.654 E035 19.839	3000	
2	EAGLE	N36 52.938 E035 21.611	12000	
3	CP	N36 31.190 E035 55.100	13000	
4	KB B NW	N36 50.720 E036 27.610		
5	KB B NE	N36 51.090 E036 40.750		
6	KB B SE	N36 40.370 E036 41.190		
7	KB B SW	N36 40.120 E036 27.900		
8	KB D NW	N36 38.244 E036 18.514		
9	KB D NE	N36 38.522 E036 31.793		
10	KB D SE	N36 27.802 E036 32.240		
11	KB D SW	N36 27.540 E036 18.885		
12	KB C NW	N36 25.639 E036 16.151		
13	KB C NE	N36 26.012 E036 28.765		
14	KB C SE	N36 14.312 E036 29.187		
15	KB C SW	N36 14.184 E036 16.691		
16	KB E NW	N36 13.168 E036 13.370		
17	KB E NE	N36 13.549 E036 26.405		
18	KB E SE	N36 02.883 E036 26.866		
19	KB E SW	N36 02.551 E036 13.684		
20	FALCON	N37 05.067 E035 40.888	2500	
21	INITIAL 23	N37 03.956 E035 31.866	2000	

COMMS

Radio	Usage
1	132.25
2	8 - 7 - 6 - 16 - 8 - 6 - 7
3	31.55

OTHER FLIGHTS

Callsign	Mission	Airframe	Freq	TCN	Grpld	Laser
Cougar 1	Sweep	4x F-14B	261.25	21/84		173X
	AO	ATO401 30B35	Task	SWEEP / CAP		
Tiger 3	Strike	4x F/A-18C	261.15	21/84		161X
	AO	ATO402 B27/28	Task	Harbor Strike - Latakia Ships		
Panther 2	Strike	3x F/A-18C	261.35	21/84		148X
	AO	ATO403 B25/26	Task	Harbor Strike - Tartus		
T-Rex 6	Strike	2x A-10C	262.25	21/84		156X
	AO	ATO411	Task	ATO411		
Raptor 6	SEAD	4x F-16C	134.0	21/84		156X
	AO	ATO406 22B25	Task	SEAD SA10		
Rattler 7	SCAR	4x AH-64D	133.5	21/84		169X
	AO	ATO407	Task	SCAR KB Delta		
Jedi* 4	CASEVAC	4x UH-1H	133.0	21/84		156X
	AO	ATO408	Task	Transport		
Tusk 2	CAS	2x A-10C	133.25	21/84		152X
	AO	ATO409	Task	CAS KB Bravo		
Monster 5	BAI	2x A-10C	132.15	21/84		146X
	AO	ATO410	Task	BAI KB Echo		
T-Rex 5	AR	3x A-10C	132.65	21/84	27	156X
	AO	ATO405 / 00B12	Task	AR KB Delta		
Whiplash* 1	JTAC	1x Ground	34.5	21/84		156X
	AO	KB Bravo	Task	JTAC		
Hammer* 5	JTAC	1x Ground	31.55	21/84		156X
	AO	KB Charlie	Task	JTAC		
Vanguard 1	SEAD	1x AV-8B N/A	134.0	21/84		168X
	AO	ATO 411	Task	Strike		
Tiger 3	Strike	4x F/A-18C	261.15	21/84		161X
	AO	ATO402 B29/30	Task	Harbor Strike - Latakia Bulding		
Panther 7	Strike	2x F/A-18C	261.45	21/84		148X

RADIO CHANNELS

#	Freq	Name
1		Flight/Squadron specific
2	288.2	Akrotiri ATIS
3	240.1	Akrotiri Ground
4	339.85	Aktrotiri Tower
5	335.05	Akrotiri Approach
6	360.1	Incirlik Tower
7	371.35	Incirlik Ground
8	377.475	Incirlik ATIS
9		No Preset
10	127.3	Paphos ATIS
11	353.8	Paphos Tower
12	304.0	CVN-73 George Washington
13	302.0	LHA-1 Tarawa
14	259.0	CV-59 Forrestal
15		No Preset
16	377.8	Overlord
17	265.0	KC-135 Texaco-1 medium/slow
18	319.8	KC-135 Arco-1
19	360.8	KC-135MPRS Arco-2
20	256.0	S-3B Recovery Tanker

RAMROD

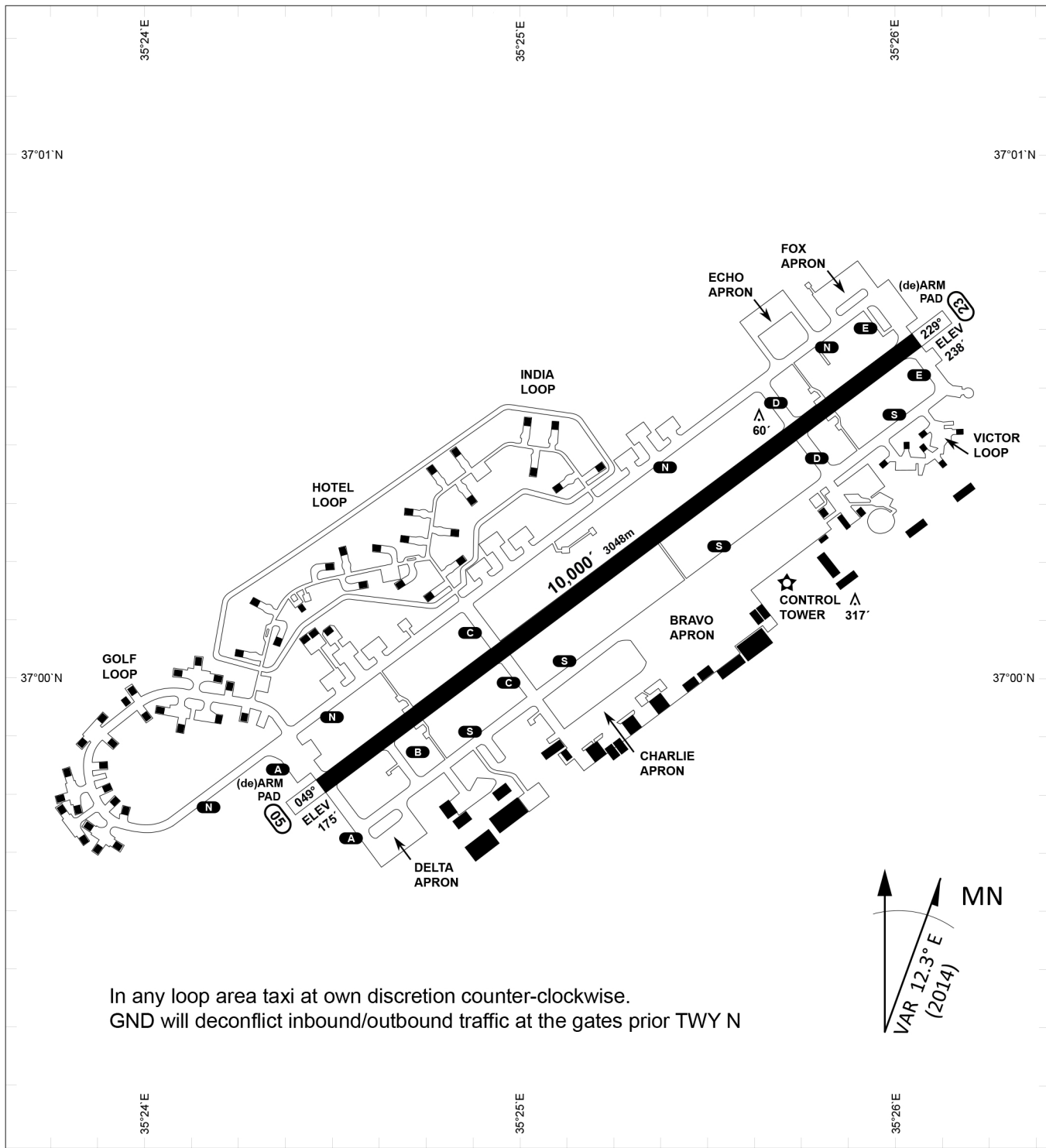
0	1	2	3	4	5	6	7	8	9
P	A	R	C	H	M	E	N	T	S

KTC 1400 C

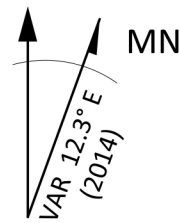
	0	1	2	3	4	5	6	7	8	9
A	UQOL	WJG	KBP	NV	CM	EDX	RI	SY	AT	HF
B	LBPK	GVS	AHF	DY	UE	CNJ	WM	IT	QR	OX
C	QLIB	DAW	FVR	PE	YC	SMH	UX	OT	KG	NJ
D	BTMN	CUS	PJQ	EH	RK	YVI	WL	FA	GD	XO
E	IMJK	NOG	UWV	XT	SA	FDE	QB	LH	PC	RY
F	MIAU	YEX	ONC	SP	GB	DQJ	TV	RH	LF	WK
G	OATX	BHG	VPN	FW	LS	YJI	UC	RD	EK	QM
H	PVEO	UAX	CMN	SB	TL	QDG	WR	KH	YF	JI
I	PJYD	USK	NIX	CB	ER	OGV	QT	LA	FW	HM
J	PHRM	KEW	NOJ	VS	CD	YGU	TQ	FB	IA	LX
K	VNBR	KOH	XIF	QY	MP	SWG	EL	CT	DA	UJ
L	EPNB	MAF	XHY	UQ	TK	CIS	RV	GL	DW	JO
M	JQIW	NDF	LSP	UY	RG	KAE	BM	VO	CH	XT
N	CQOV	ADT	LBY	MX	FH	UNK	GE	PJ	IW	SR
O	XYOD	EQL	KHN	GM	UF	RVA	WC	TI	SB	PJ
P	WICB	MLV	DEO	JF	TK	RNU	AX	HS	PY	QG
Q	RSCB	FOL	HMX	GT	YW	IND	VK	QA	JE	PU
R	PKFT	OIW	CMB	GR	NH	VXJ	QY	DL	EU	AS
S	QHJF	SOV	WGU	YL	TP	RIB	AE	NM	XD	CK
T	CEXU	AWI	LTQ	HP	GK	MOJ	YF	DR	BV	SN
U	YSLF	AVN	BGE	RK	MP	OQC	HT	WD	XU	JI
V	AJTX	YSR	KGW	DO	EL	VHM	UB	PF	IN	CQ
W	HLFD	QPG	JMX	AN	IR	WBS	YV	OC	KU	TE
X	HORW	GBP	SIV	KF	TJ	ECU	YD	AM	NL	QX
Y	GMDT	NKX	LHV	UJ	SW	AFE	YR	QP	BC	OI

NAVAIDS

Id	Name	Channel	Position	Elevation
DAN	Incirlik	21	N37 00.950 E035 26.883	243
AKR	Akrotiri	107	N34 34.765 E032 57.769	147
PHA	Paphos	79	N34 42.997 E032 28.963	35
RMD	Ramat David	84	N32 39.892 E035 11.265	136
OS66	Kuweires Military Aviation Institute	36	N36 11.362 E037 34.226	1200



In any loop area taxi at own discretion counter-clockwise.
 GND will deconflict inbound/outbound traffic at the gates prior TWY N



PAR	RWY	CAT	MINIMA	ARP	ELEV	Scale 1:35'500 0 300 600 900 1200 1500 [m] 0 1000 2000 3000 4000 5000 [ft]
SRA	21L 3R 21R 3L	A B D E A B D E A C D E A C D E	2057 - 0.8 200 (200-0.8/1.6) GS 3° 2057 - 0.8 200 (200-0.8/1.6) GS 3° 2257 - 1.2 350 (350-1.2/1.6) 2257 - 1.2 350 (350-1.2/1.6)	37°0'56.000" N 35°26'53.000" E	1857 [ft] 566 [m]	

RWY	TORA	TORA from D	TORA from B	COURSE	PSN THR	ALS
23	10,000 [ft] 3048 [m]	8,000 [ft] 2438 [m]		235°	37°00.611'N 035°26.368'E	⊙
05	10,000 [ft] 3048 [m]		9,000 [ft] 2743 [m]	055°	36°59.043'N 035°24.760'E	⊙

ATIS	INCIRLIK GROUND	INCIRLIK TOWER	CONTROL	TACAN	ILS RWY 05	ILS RWY 23
377.475	371.350 123.020	360.100 121.100	337.800	DAN21x	109.3MHz	111.7MHz

ATIS
377.475 (#8)

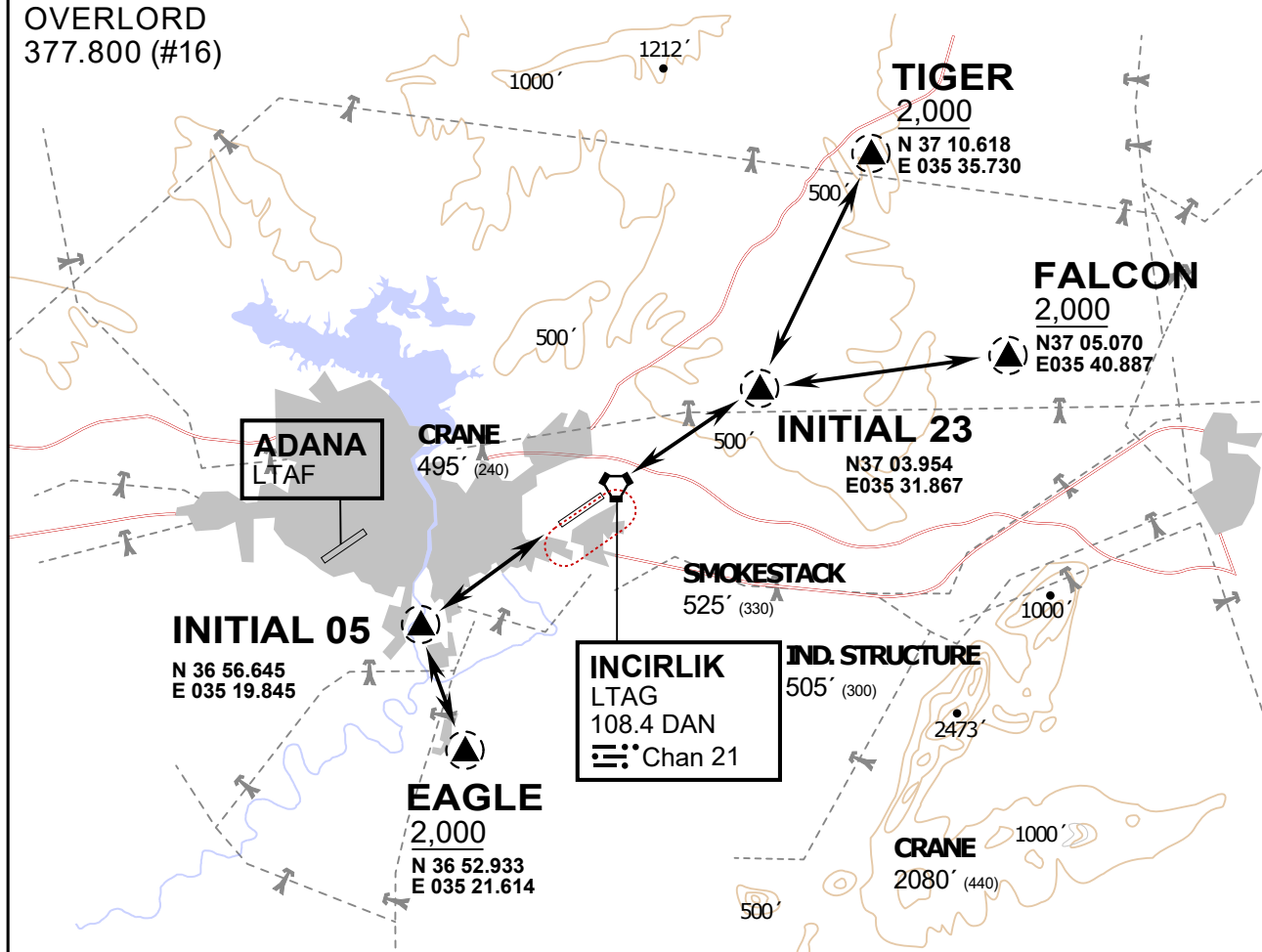
INCIRLIK GROUND
371.3500 (#7)

INCIRLIK TOWER
360.100 (#6)

OVERLORD
377.800 (#16)

NOT FOR CIVIL USE

CAUTION: If unable to comply
with restrictions advise ATC
prior to departure.



vJaBoG32 ETRR NAV CHART



ARR / DEP ROUTE DESCRIPTION

STRAIGHT-IN RWY 05 / 23

Pass entry EAGLE / TIGER / FALCON at 2000' and INITIAL at 1500'

OVERHEAD BREAK RWY 05 / 23

Pass entry EAGLE / TIGER / FALCON at 2500',
pass INITIAL at 2000' break to the south at 2000' pattern altitude.

HELICOPTER ROUTES

Pass entry EAGLE / TIGER / FALCON at 1000' or below, pass INITIAL at 1000' break to the south at 1000' pattern altitude.

DEPARTURE ALL DIRECTIONS

pass DER below 1500ft

ATIS
377.475 (#8)

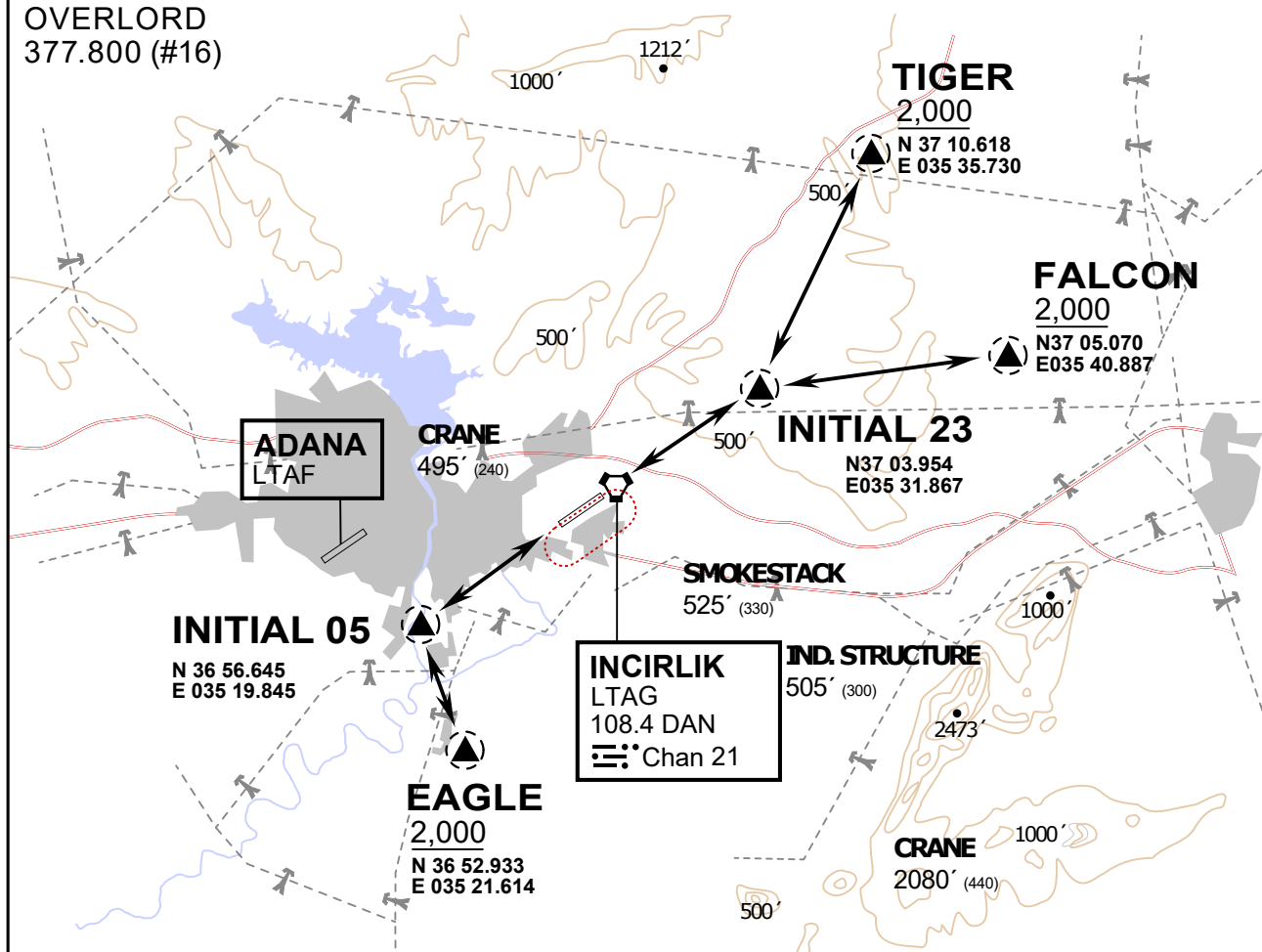
INCIRLIK GROUND
371.3500 (#7)

INCIRLIK TOWER
360.100 (#6)

OVERLORD
377.800 (#16)

NOT FOR CIVIL USE

CAUTION: If unable to comply
with restrictions advise ATC
prior to departure.



vJaBoG32 ETRR NAV CHART



ARR / DEP ROUTE DESCRIPTION

STRAIGHT-IN RWY 05 / 23

Pass entry EAGLE / TIGER / FALCON at 2000' and INITIAL at 1500'

OVERHEAD BREAK RWY 05 / 23

Pass entry EAGLE / TIGER / FALCON at 2500',
pass INITIAL at 2000' break to the south at 2000' pattern altitude.

HELICOPTER ROUTES

Pass entry EAGLE / TIGER / FALCON at 1000' or below, pass INITIAL at 1000' break to the south at 1000' pattern altitude.

DEPARTURE ALL DIRECTIONS

pass DER below 1500ft