

MISSION DATA CARD

OPORD		Callsign		Mission		Date/Time	
1325/2022		Tiger 2		Training		032031NOV22	
Task	Airfield Strike						Freq
AO	Nicosia Taxiway						261.45
Departure				Recovery			
CAT				CASE I			
#	Callsign	Pilot		IFF	TCN	LSR	NET
-1	Tiger 2-1	Ghost		1021	11Y	1551	04/01
-2	Tiger 2-2	Taxman		1022	74Y	1552	04/02
-2	Tiger 2-2	Taxman		1022	74Y	1552	04/02

LOADOUT

A/A	2xA9X, 2xA120C				GUN	100% HEI-T
A/G	4xM84				CHF	90
POD					FLR	30
TKS	FPU-8A				FUEL	100%

TOLD

	Takeoff	Target	Joker	Bingo	Land
FUEL	13047			3500	

AIRBASES

	Name	TCN	ATIS	GND	TWR	RWY	Elev	ILS
Dep	CVN-73 USS G. Washington	55X		ICLS 12	304.0			
Arr	CVN-73 USS G. Washington	55X		ICLS 12	304.0			
Div	Akrotiri AFB	107X	288.2	240.1	339.85	28	62	109.7

FLIGHTPLAN

#	Name	Navaid/Coords/DME	ALT	TOT
1	CAP Tiger	N34 54 36.327 E033 38 54.092	25000	
2	CAP Tiger	N34 54 38.760 E033 14 31.753	25000	
3	IP	N35 07 19.747 E033 02 54.044	25000	
4	TAXI	N35 09 11.160 E033 16 18		

COMMS

Radio	Usage
1	12, 16, 9, 16, 12
2	Inhouse 261.45
3	A: 24 / B: 44

NOTES

NOTAM: Auf Akrotiri wird die GND-Frequenz eingestellt. Jegliche Kommunikation findet auf der TWR-Frequenz statt

Weather: Overcast 3 at 13500ft, Wind: 6kn from 243° at 33ft, 12kn from 150° at 6600ft, 14kn from 94° at 26000ft

Comms:

Inhouse: sie FPT

ATIS: 288.2

Akrotiri Tower: 339.85

Overlord: 377.88

CVN-73 George Washington: 304.000

CV-59 Forrestal: 259.000

LHA-1 Tawara: 302.000

Koordinationsfrequenz: siehe FPT

Support:

Shell-3: 278.750 AM TACAN: 93Y

TEXACO-2: 244.780 AM TACAN: 44Y

SUPPORT**Tanker**

Callsign	TCN	Freq	ALT	TAS
TEXACO 2	44Y	244.78	FL150	250
	Pos	TEXACO2: (N3424 E03403)		

AWACS

Callsign	Freq	ALT	Pos
OVERLORD2	377.8	FL320	N3713 E03643 - N3714 E03749

OTHER FLIGHTS

Callsign	Mission	Airframe	Freq	TCN	Grpld	Laser
Cougar 3	Training	4x F-14B	261.25	21/84		156X
AO	Nikosia RWY	Task	Airfield Strike			
Panther 4	Training	4x F/A-18C	261.35	31/94		157X
AO	Gecitkale RWY	Task	Airfield Strike			
Monster 1	Training	4x A-10C	132.15	25/88	21	161X
AO	Nikosia Airfield	Task	SAM Triangulation & Pre-Planned JDAM			
T-Rex 2	Training	4x A-10C	132.25	27/90	25	165X
AO	Lefkosa Ercan	Task	SAM Triangulation & Pre-Planned JDAM			
Raptor 5	Training	4x F-16C	134.0	21/84		156X
AO	East Cyprus	Task	SEAD & CAP			
Rattler 1	Training	4x AH-64D	35.35	21/84		125X
AO	East Cyprus	Task	DEAD			

RADIO CHANNELS

#	Freq	Name
1		Flight/Squadron specific
2	288.2	Akrotiri ATIS
3	240.1	Akrotiri Ground
4	339.85	Aktrotiri Tower
5	335.05	Akrotiri Approach
6	360.1	Incirlik Tower
7	371.35	Incirlik Ground
8	377.475	Incirlik ATIS
9		No Preset
10	127.3	Paphos ATIS
11	353.8	Paphos Tower
12	304.0	CVN-73 George Washington
13	302.0	LHA-1 Tarawa
14	259.0	CV-59 Forrestal
15		No Preset
16	377.8	Overlord
17	265.0	KC-135 Texaco-1 medium/slow
18	319.8	KC-135 Arco-1
19	360.8	KC-135MPRS Arco-2
20	256.0	S-3B Recovery Tanker

RAMROD

0	1	2	3	4	5	6	7	8	9
G	R	O	U	C	H	I	E	S	T

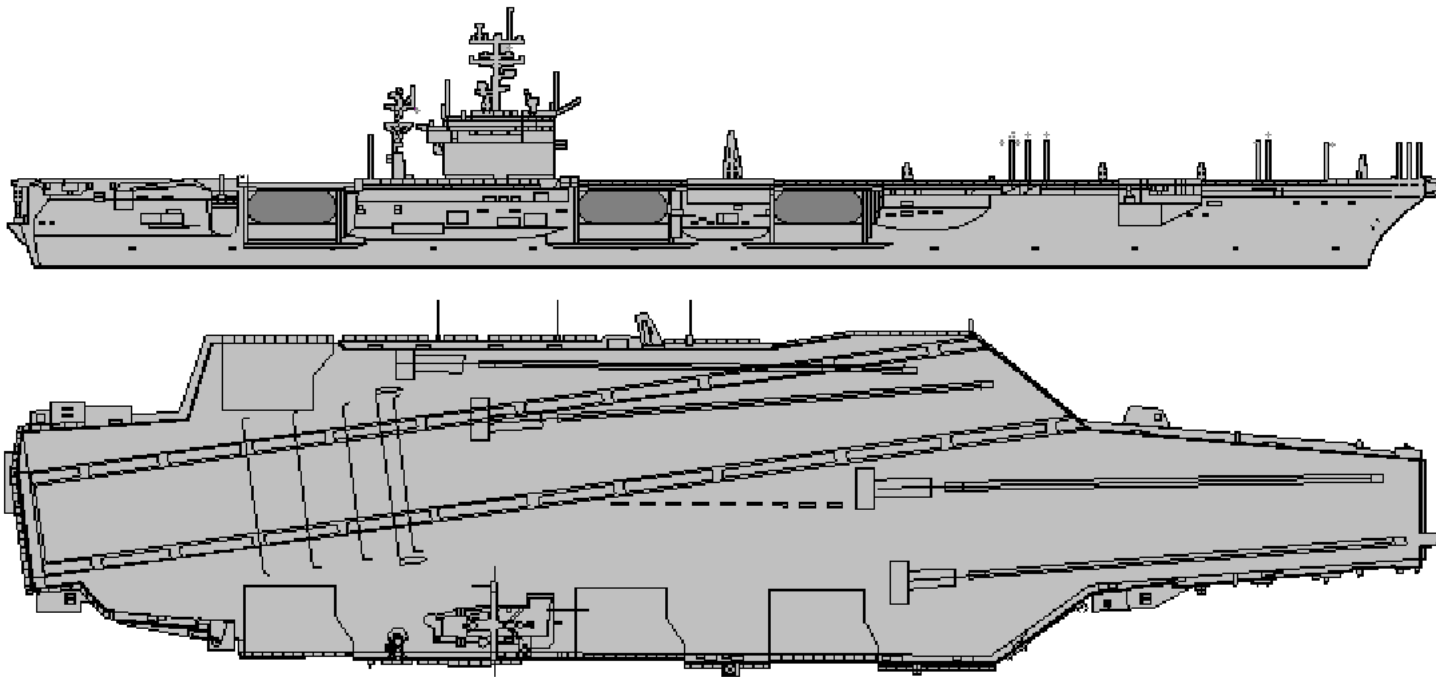
KTC 1400 C

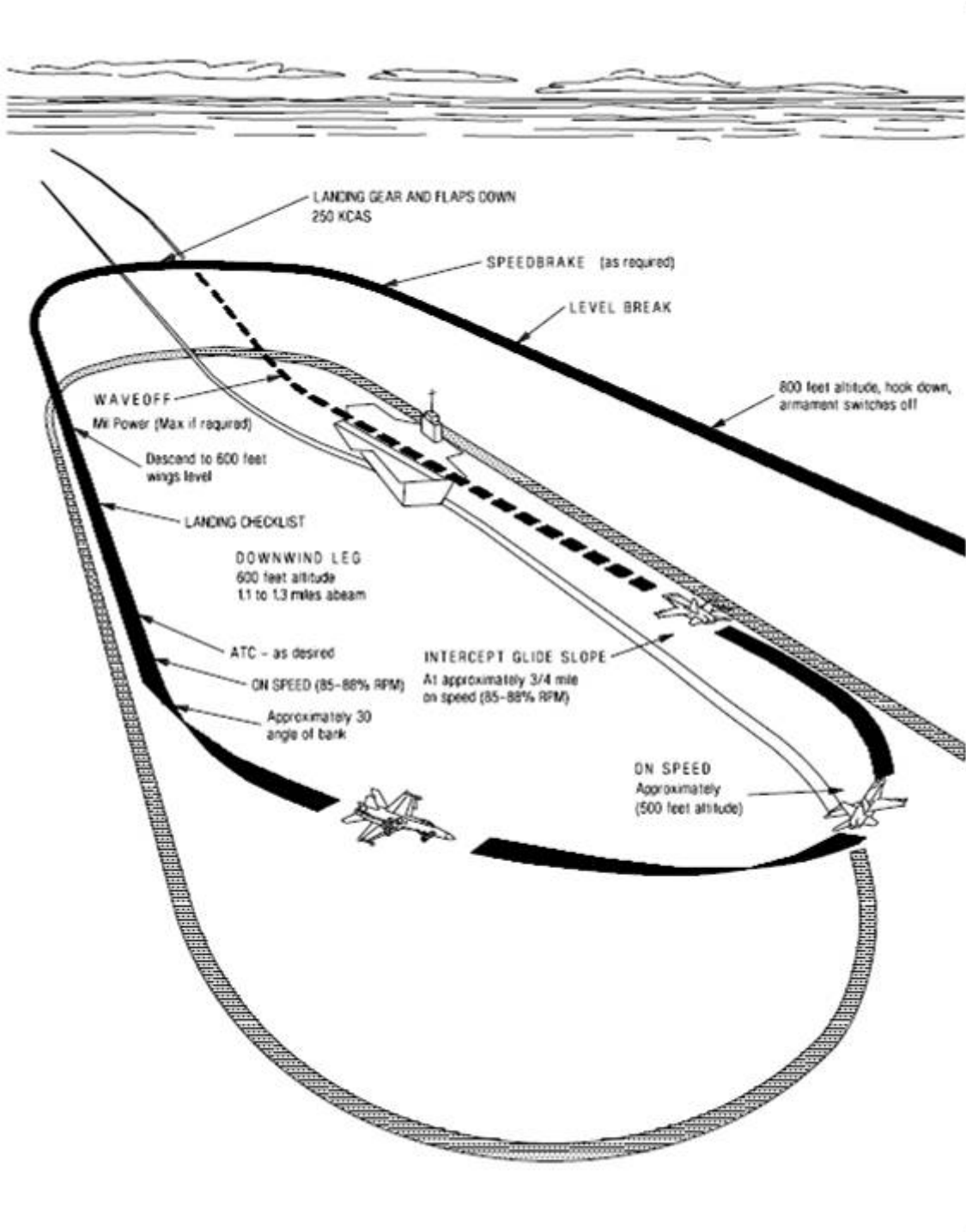
	0	1	2	3	4	5	6	7	8	9
A	BXOP	NAJ	QWR	CS	TV	FME	UL	KI	DH	GY
B	HQWR	OCK	YJL	GS	PI	FAB	XU	TE	DV	NM
C	OBEM	NYP	VLR	TH	UX	DAG	KI	FJ	CS	WQ
D	IQNE	LMU	GWV	XF	SD	YJT	PK	OR	BA	CH
E	YKSJ	VIU	HFV	DC	TE	ABL	XP	RO	MQ	NG
F	UDVJ	STE	BRY	FQ	HX	IPA	KL	WN	MG	OC
G	HNJW	AFM	SLU	XT	VQ	EGO	DP	RI	YC	BK
H	SCDP	JIN	EUK	OR	BW	XHY	ML	VG	FQ	AT
I	KYTL	PEQ	VBM	GI	NX	FOJ	US	AC	HR	DW
J	GOQW	BYD	XKM	TE	IC	JNP	LH	AV	FU	SR
K	POXK	GSD	LCU	QY	MA	BHI	RT	WE	FJ	NV
L	JLNF	QOE	UKS	PC	GB	VHI	DX	MW	YR	TA
M	AYSX	LHC	OFG	RP	EQ	JKT	NB	MI	DW	UV
N	DCAJ	XHQ	VTO	GL	EK	WNY	BU	SP	IF	RM
O	DFOI	MPJ	GKC	QH	RS	YTX	WL	VU	BE	NA
P	HGQA	OWJ	RMD	EY	NP	CSX	TF	IV	BU	LK
Q	UJRG	OWX	DYE	NC	TK	VLH	AI	BF	PM	SQ
R	GCLI	SKN	YJR	MA	FE	QBV	TH	DU	PO	XW
S	SXWY	QDE	TMB	AO	VI	RHG	FU	JK	CP	NL
T	VUEA	OPJ	XHB	TC	SW	DMF	KN	IG	YR	LQ
U	MTDF	XJE	BHQ	WA	YK	NCV	SO	UI	GL	RP
V	YUFO	XSC	RKJ	GA	QH	VDM	NL	TI	PE	BW
W	YXUR	LMI	JTB	NP	KV	QOC	SG	AE	FH	DW
X	ABVR	OJD	KSU	HP	IL	YXF	GQ	MT	EN	WC
Y	UQFW	GIE	PBA	LC	YS	TXD	KV	OR	MH	NJ

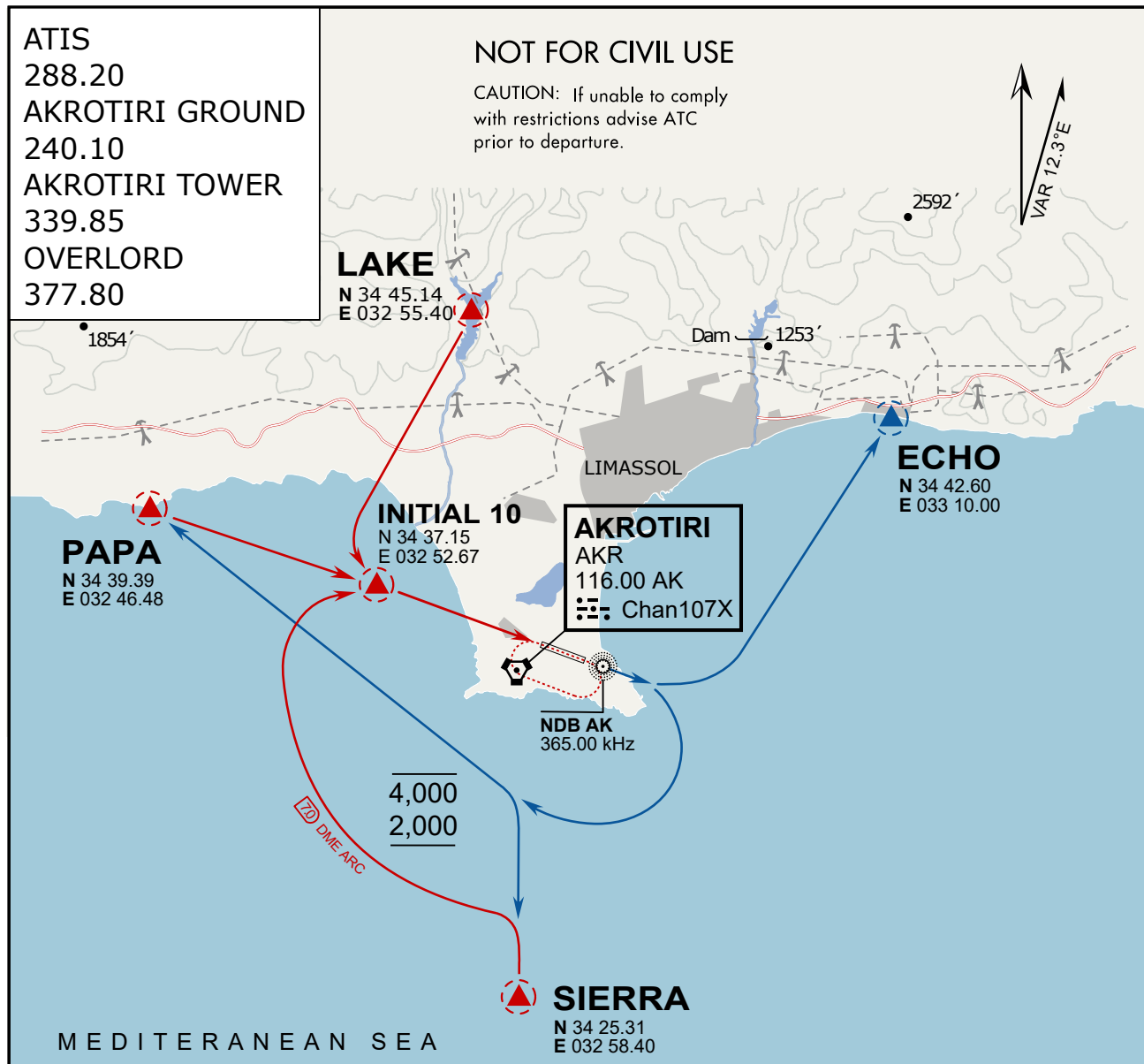
NAVAIDS

Id	Name	Channel	Position	Elevation
DAN	Incirlik	21	N37 00.950 E035 26.883	243
AKR	Akrotiri	107	N34 34.765 E032 57.769	147
PHA	Paphos	79	N34 42.997 E032 28.963	35
RMD	Ramat David	84	N32 39.892 E035 11.265	136
OS66	Kuweires Military Aviation Institute	36	N36 11.362 E037 34.226	1200









ARR / DEP ROUTE DESCRIPTION

ARRIVAL GENERAL

Pass Entry at 5.000' or below. Overhead Brake RWY 10: pass INITIAL 10 at 2.000' MSL.
Straight-in RWY 10 : pass INITIAL 1.500' or below.

ARR RWY10 PAPA / LAKE: Direct initial.

ARR RWY10 SIERRA: Intercept ARC 7 of AKR to INITIAL 10.

ARR ECHO: no ENTRY.

DEPARTURE GENERAL

Pass Departure end of runway at 1.000' AGL or below. Keep RWY heading until coastline.

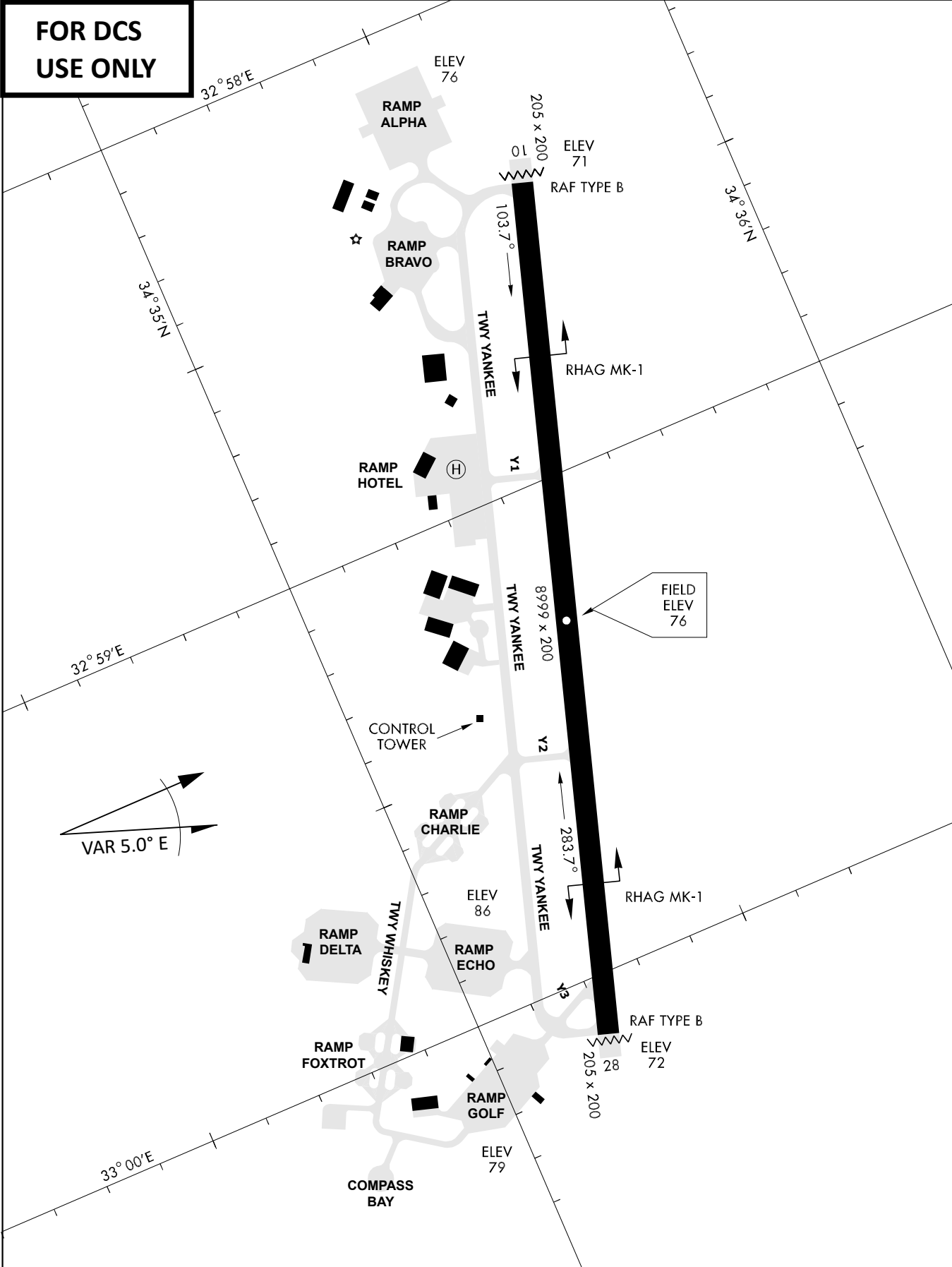
DEP RWY10 ECHO: Direct EXIT.

DEP RWY10 SIERRA: Climbing right turn, intercept R180 AKR to Sierra.

DEP RWY10 PAPA: Climbing right turn until R180 AKR, then direct Papa

DEP LAKE: no EXIT.

**FOR DCS
 USE ONLY**



ATIS	AKROTIRI GND	AKROTIRI TWR	OVERLORD CONTROL	TACAN	FIELD ELEVATION
288.20 MHz	240.10 122.10	339.85 130.075	377.8	AKR 107X	75 [ft] 23 [m]