

MISSION DATA CARD

OPORD		Callsign		Mission		Date/Time	
1297/2022		Edelweiss 7		Training		202000OCT22	
Task	Tanker Training mit NVG					Freq	
AO	Texaco 1					261.25	
Departure				Recovery			
RWY10 VFR				RWY10 VFR			
#	Callsign	Pilot	IFF	TCN	LSR	NET	
-1	Edelweiss 7-1	Chance	1761	21Y	1561		
-2	Edelweiss 7-2	Void	1762	84Y	1562		
-3	Edelweiss 7-3	Woodman	1763	84X	1563		

LOADOUT

A/A	2xA120C			GUN	100% TP PGU
A/G				CHF	120
POD				FLR	0
TKS	3xFT300			FUEL	100%

TOLD

	Takeoff	Target	Joker	Bingo	Land
FUEL	13172	12000	8000	3000	1500

AIRBASES

	Name	TCN	ATIS	GND	TWR	RWY	Elev	ILS
Dep	Akrotiri AFB	107X	288.2	240.1	339.85	28	62	109.7
Arr	Akrotiri AFB	107X	288.2	240.1	339.85	28	62	109.7
Div	Akrotiri AFB	107X	288.2	240.1	339.85	28	62	109.7

FLIGHTPLAN

#	Name	Navaid/Coords/DME	ALT	TOT
1	PAPA	N34 39.760 E032 47.970	3000	
2	TEXACO1	N36 34.200 E034 20.400	14000	
3	ECHO	N34 41.470 E033 09.060	14000	
4	Initial 10	N34 37.150 E032 52.670	2000	

COMMS

Radio	Usage
1	4(AKT T)
2	16(OVRLRD)
3	ATIS 288.2

NOTES

NVG mit einpacken,

TANKER: TEXACO 1

265.0

71Y

TEXACO1: (N3657 E03434)

FL170

300

SUPPORT**Tanker**

Callsign	TCN	Freq	ALT	TAS
TEXACO 1	71Y	265.0	FL170	300
	Pos	TEXACO1: (N3657 E03434)		

AWACS

Callsign	Freq	ALT	Pos
OVERLORD2	377.8	FL320	N3713 E03643 - N3714 E03749

OTHER FLIGHTS

Callsign	Mission	Airframe	Freq	TCN	Grpld	Laser
Rattler 2	Training	2x AH-64D	133.5	21/84		156X
AO	SA-10	Task	package training			
Monster 1	Training	4x A-10C	132.15	25/88	21	161X
AO	SA10 training site - CAS Range	Task	Package training			
T-Rex 2	Training	4x A-10C	132.25	27/90	25	165X
AO	SA10 training site - CAS range	Task	Package training			
Tiger 1	Training	4x F/A-18C	261.15	11/74	1	155X
AO	SA 2 SAM-Range	Task	SEAD / DEAD			
Vanguard 5	Training	1x AV-8B N/A	264.55	21/84		168X
AO	AKAMAS BOMBING RANGE / AAR	Task				
Cougar 1	Training	4x F-14B	261.25	21/84		156X
AO		Task				
Panther 3	Training	4x F/A-18C	261.45	21/84		156X
AO	BVR Range	Task	Night BVR			
Edelweiss 5	Training	4x F/A-18C	261.35	21/84		156X
AO	ETTR North	Task	Night AAR			
Tiger 2	Training	4x F/A-18C	261.25	11/74	2	155X
AO	SA 2 SAM-Range	Task	SEAD / DEAD			

RADIO CHANNELS

#	Freq	Name
1		Flight/Squadron specific
2	288.2	Akrotiri ATIS
3	240.1	Akrotiri Ground
4	339.85	Aktrotiri Tower
5	335.05	Akrotiri Approach
6	360.1	Incirlik Tower
7	371.35	Incirlik Ground
8	377.475	Incirlik ATIS
9		No Preset
10	127.3	Paphos ATIS
11	353.8	Paphos Tower
12	304.0	CVN-73 George Washington
13	302.0	LHA-1 Tarawa
14	259.0	CV-59 Forrestal
15		No Preset
16	377.8	Overlord
17	265.0	KC-135 Texaco-1 medium/slow
18	319.8	KC-135 Arco-1
19	360.8	KC-135MPRS Arco-2
20	256.0	S-3B Recovery Tanker

RAMROD

0	1	2	3	4	5	6	7	8	9
P	A	T	R	O	N	Y	M	I	C

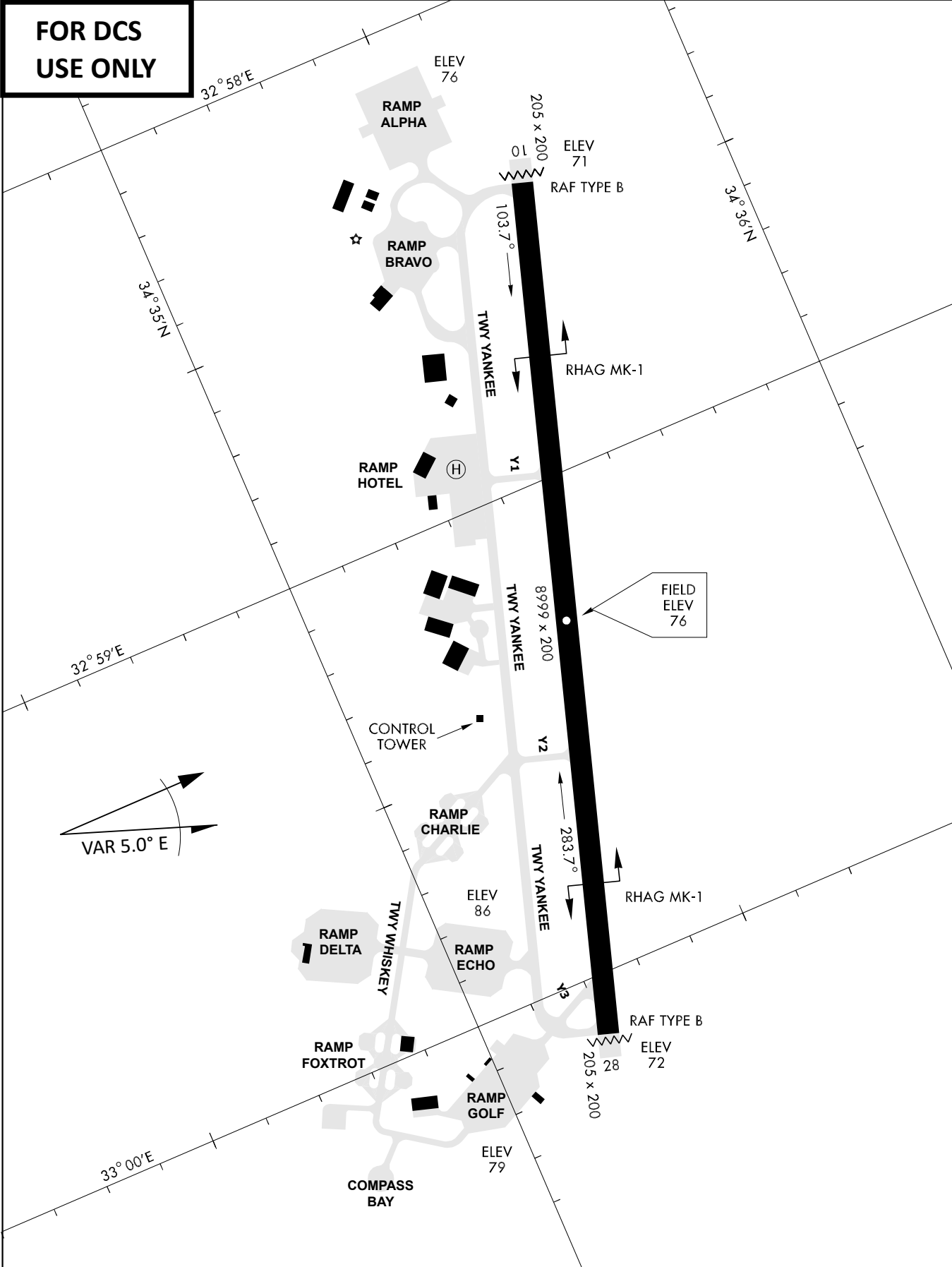
KTC 1400 C

	0	1	2	3	4	5	6	7	8	9
A	UXYR	IFW	JTG	SA	OD	PHN	EL	CV	QK	MB
B	GPFR	UCM	SVD	EQ	AL	KIJ	BX	TY	HN	WO
C	NKBY	HDM	QOW	SU	JE	FVL	IA	PX	RC	TG
D	FWAY	PED	TNI	VU	XR	GMS	OH	LB	JK	QC
E	EWOM	LKS	NXA	DV	QT	CBR	HI	GU	YJ	PF
F	UKHE	XDL	SOA	FQ	RI	NWT	CG	MP	YB	VJ
G	YRIO	UTC	WHJ	PM	FB	EVS	AL	KG	NQ	XD
H	BDLI	JWK	ECM	YR	OF	AHG	UX	VQ	TS	NP
I	SJHP	IKL	GYE	MV	QT	UAR	OF	CD	NW	BX
J	TJSF	XOL	BIG	PU	VE	RQN	KY	DA	CH	MW
K	KTGE	WDQ	RSO	CJ	LH	NAU	XB	VM	IF	YP
L	VCBO	GHN	DIM	EQ	RF	YWJ	UA	PS	LX	KT
M	DGHW	TAC	XQF	OR	MY	PEV	NI	UJ	SL	KB
N	KJYL	ESF	GVQ	XH	MR	ANI	BW	TD	PC	UO
O	SDLQ	TEU	HMI	CP	BR	XOF	VJ	GY	KW	NA
P	CHRD	SEI	XQL	UM	OP	WAB	JN	VK	GT	YF
Q	QDVU	OXM	NKE	JA	CB	GPY	WH	FR	IT	LS
R	NRTF	OPL	IDX	VW	KS	MYB	GJ	HQ	UC	EA
S	FQCT	HSV	YLA	OU	XG	NDK	PE	IR	BJ	WM
T	LCED	KTJ	FWM	YV	PO	BQU	AI	RG	HN	SX
U	XJDH	OPM	AUI	QF	LC	NET	BG	VR	YK	SW
V	PBXV	DSR	JTC	AO	KG	MYW	HF	QE	UL	NI
W	YNIA	TDK	RQP	MJ	SV	GBF	CX	HL	EU	WO
X	HYBV	ADC	TPF	NO	GU	EKQ	WR	IS	LM	JX
Y	HJRW	MDF	UPE	XN	QT	KVI	CY	GA	BO	LS

NAVAIDS

Id	Name	Channel	Position	Elevation
DAN	Incirlik	21	N37 00.950 E035 26.883	243
AKR	Akrotiri	107	N34 34.765 E032 57.769	147
PHA	Paphos	79	N34 42.997 E032 28.963	35
RMD	Ramat David	84	N32 39.892 E035 11.265	136
OS66	Kuweires Military Aviation Institute	36	N36 11.362 E037 34.226	1200

**FOR DCS
 USE ONLY**



ATIS	AKROTIRI GND	AKROTIRI TWR	OVERLORD CONTROL	TACAN	FIELD ELEVATION
288.20 MHz	240.10 122.10	339.85 130.075	377.8	AKR 107X	75 [ft] 23 [m]

ATIS

288.20

AKROTIRI GROUND

240.10

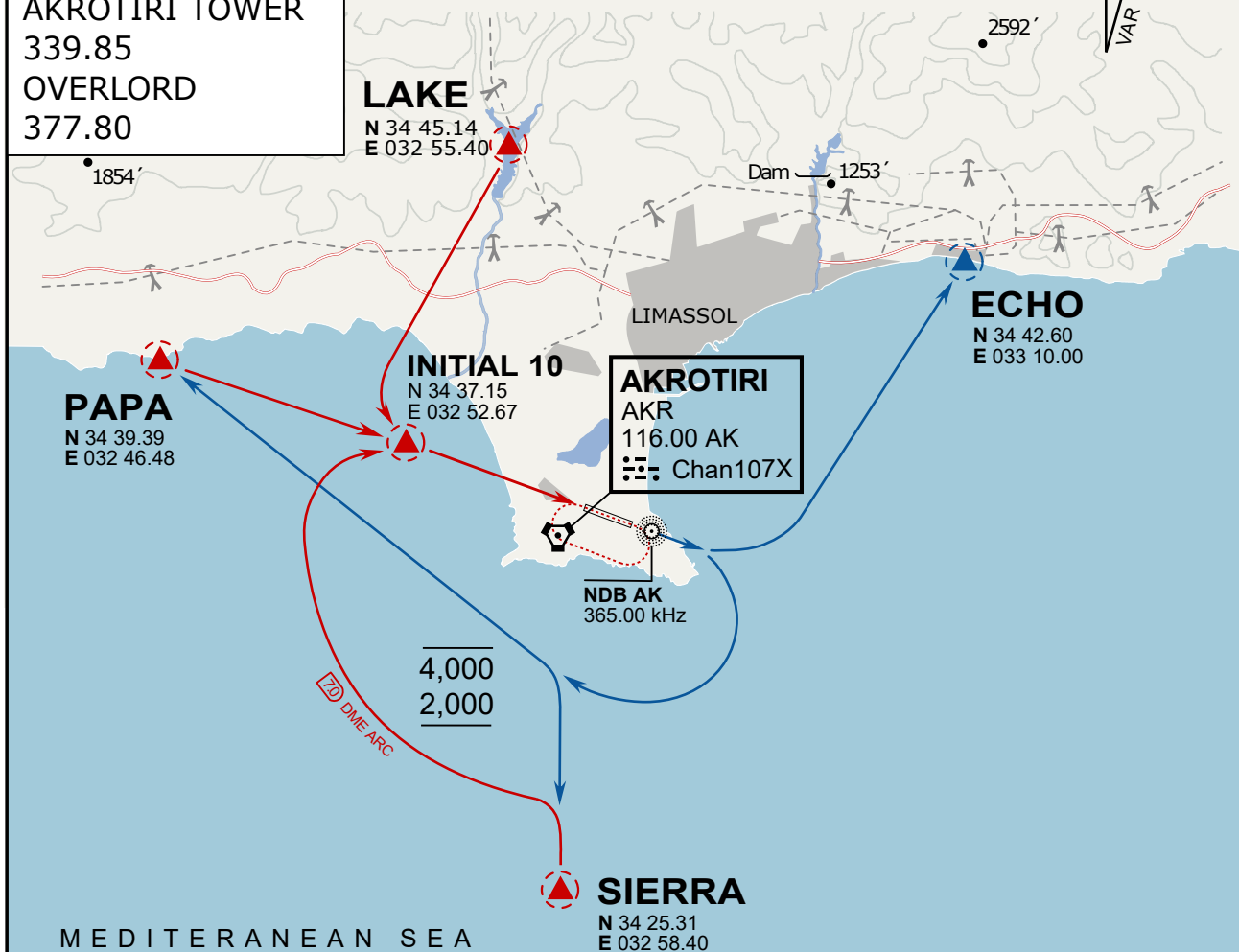
AKROTIRI TOWER

339.85

OVERLORD

377.80

NOT FOR CIVIL USE

CAUTION: If unable to comply
with restrictions advise ATC
prior to departure.

ARR / DEP ROUTE DESCRIPTION

ARRIVAL GENERAL

Pass Entry at 5.000' or below. Overhead Brake RWY 10: pass INITIAL 10 at 2.000' MSL.
Straight-in RWY 10 : pass INITIAL 1.500' or below.

ARR RWY10 PAPA / LAKE: Direct initial.

ARR RWY10 SIERRA: Intercept ARC 7 of AKR to INITIAL 10.

ARR ECHO: no ENTRY.

DEPARTURE GENERAL

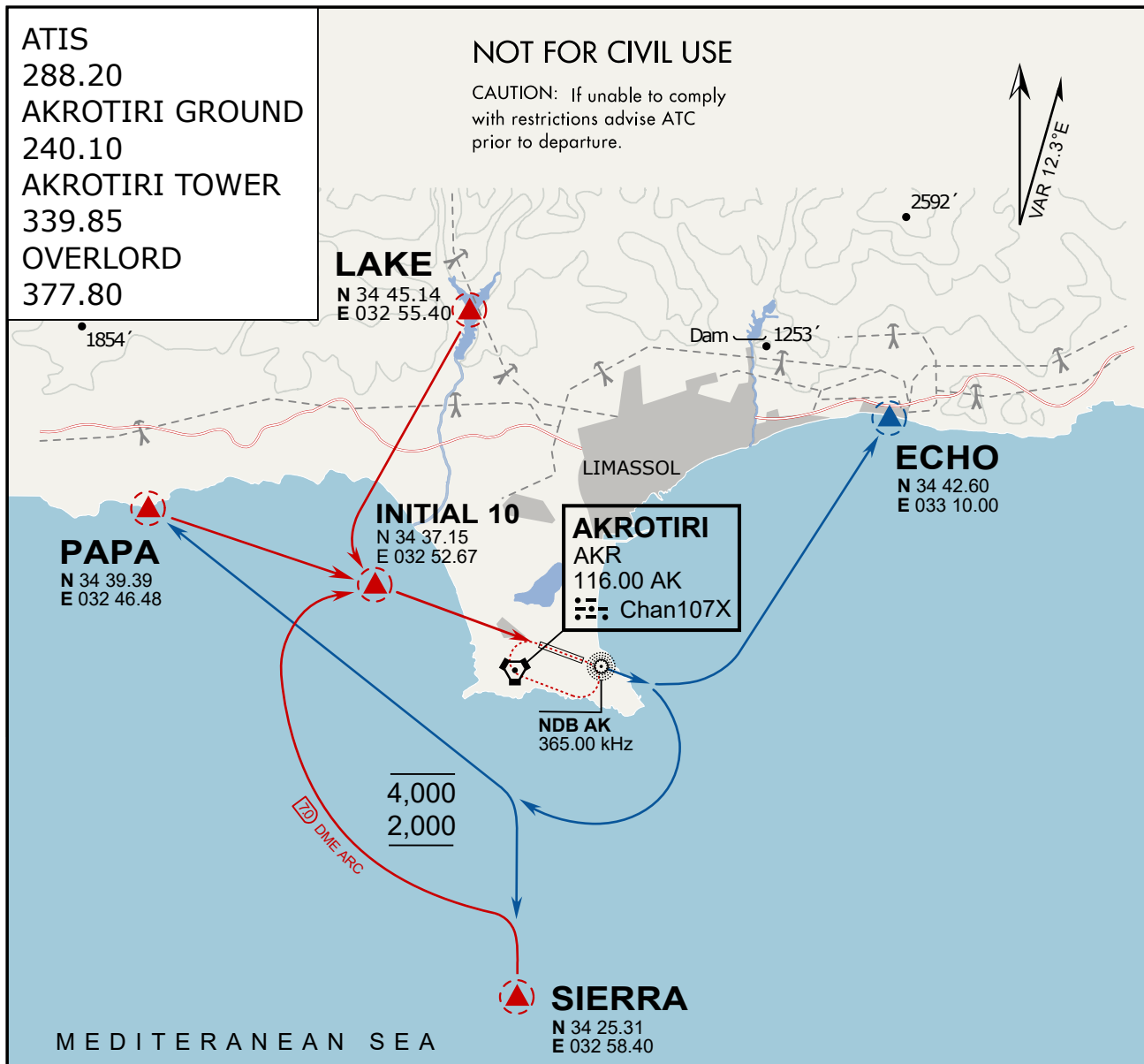
Pass Departure end of runway at 1.000' AGL or below. Keep RWY heading until coastline.

DEP RWY10 ECHO: Direct EXIT.

DEP RWY10 SIERRA: Climbing right turn, intercept R180 AKR to Sierra.

DEP RWY10 PAPA: Climbing right turn until R180 AKR, then direct Papa

DEP LAKE: no EXIT.



ARR / DEP ROUTE DESCRIPTION

ARRIVAL GENERAL

Pass Entry at 5.000' or below. Overhead Brake RWY 10: pass INITIAL 10 at 2.000' MSL.
Straight-in RWY 10 : pass INITIAL 1.500' or below.

ARR RWY10 PAPA / LAKE: Direct initial.

ARR RWY10 SIERRA: Intercept ARC 7 of AKR to INITIAL 10.

ARR ECHO: no ENTRY.

DEPARTURE GENERAL

Pass Departure end of runway at 1.000' AGL or below. Keep RWY heading until coastline.

DEP RWY10 ECHO: Direct EXIT.

DEP RWY10 SIERRA: Climbing right turn, intercept R180 AKR to Sierra.

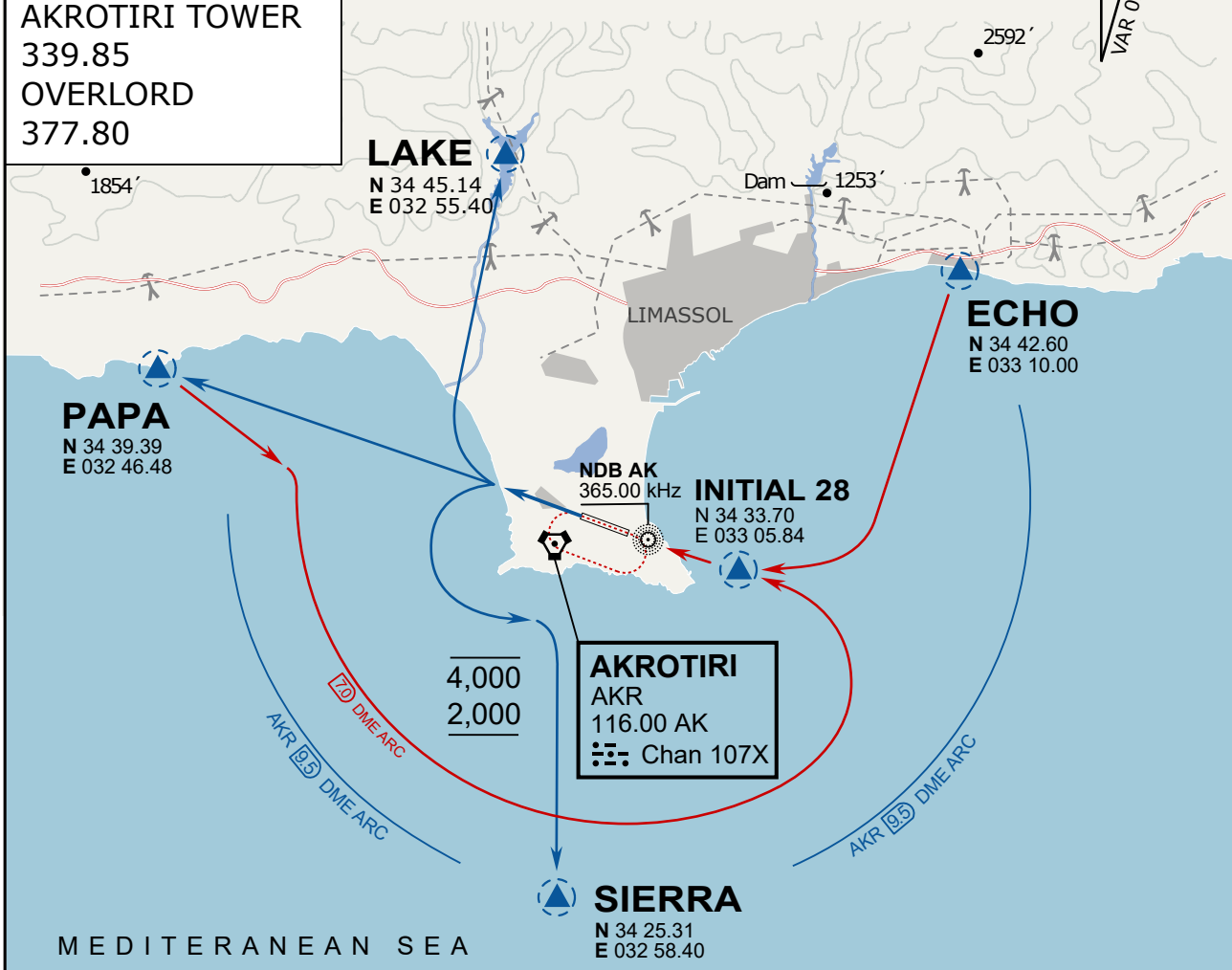
DEP RWY10 PAPA: Climbing right turn until R180 AKR, then direct Papa

DEP LAKE: no EXIT.

ATIS
 288.20
AKROTIRI GROUND
 240.10
AKROTIRI TOWER
 339.85
OVERLORD
 377.80

NOT FOR CIVIL USE

CAUTION: If unable to comply
 with restrictions advise ATC
 prior to departure.



ARR / DEP ROUTE DESCRIPTION

STRAIGHT-IN RWY28

Pass ENTRY at 5.000' MSL or below, pass INITIAL at 1.500' MSL or below.

OVERHEAD BREAK RWY28

Pass ENTRY at 5.000' MSL or below, pass INITIAL at 2.000' MSL, break to the south.

DEPARTURE GENERAL

Pass Departure end of runway at 1.000' or below.

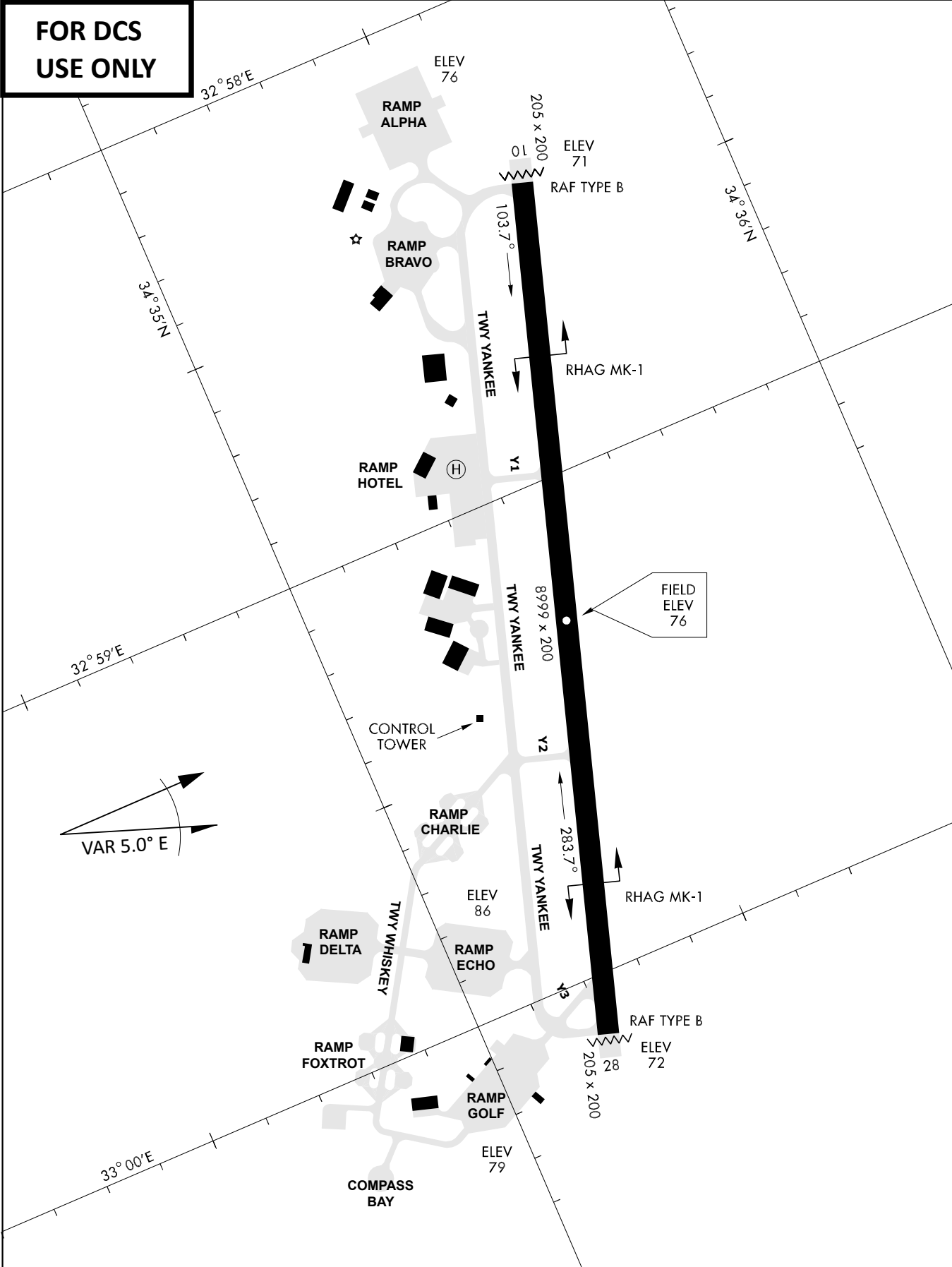
DEP RWY28 PAPA: Fly straight ahead to exit.

DEP RWY28 LAKE: Fly straight ahead until coast, than right turn direct exit.

DEP RWY28 SIERRA: Fly straight ahead until coastline, then climbing left turn, intercept AKR R-180 to exit.

DEP ECHO: no exit.

**FOR DCS
 USE ONLY**



ATIS	AKROTIRI GND	AKROTIRI TWR	OVERLORD CONTROL	TACAN	FIELD ELEVATION
288.20 MHz	240.10 122.10	339.85 130.075	377.8	AKR 107X	75 [ft] 23 [m]